

PRO-X

Website:

[Http://www.pro-x.biz](http://www.pro-x.biz)

Overseas Agent:

[Http://www.prosolution.tv](http://www.prosolution.tv)

PRO-X

RECON X5

HD Wireless Transmission System

User's Manual

PRO-X Co., Ltd

TABLE OF CONTENTS

1. FCC STATEMENT	1
IMPORTANT INFORMATION	2
2. INTRODUCTION.....	3
3. SPECIFICATION.....	4
4. OVERVIEW.....	5
5. INSTALLATION.....	6
6. SYSTEM SETTINGS.....	7
6. TROUBLE SHOOTING.....	8
7. PACKING CONTENT.....	9

Packing Content

Please check whether the following items are present in the package. If any items missed or damaged, please contact your dealer.

No.	Description	Quantity
1	RECON X5TX	1
2	RECON X5RX	1
3	Antenna	4
4	Connecting Plate	1
5	Remote Control	1
6	User's Manual	1



Troubleshooting

Problem	Solution
Power indicator doesn't light up	Check that the power plug of RECON X5TX and RECON X5RX is properly inserted into a functioning power outlet.
No video is displayed on your monitor	<ul style="list-style-type: none"> ■ Verify that the proper cable has been selected and installed between the desired RECON X5TX input connector and your High-Definition device. ■ On your monitor side, select the SDI source you connected to RECON X5RX. ■ Check your video resolution with SDI input from your device is 1080p, 1080i 720p, 576i, 480i. ■ Check the VIDEO LED on your RECON X5RX: Blinking green--RECON X5RX is connecting with the signal source; Solid green--RECON X5RX has connected with the signal source. ■ Check the LINK LED on your RECON X5RX: Blinking green--RECON X5RX is connecting with the RECON X5TX; Solid green--RECON X5RX has connected with RECON X5TX. ■ Make sure your multiple High-Definition devices connected with RECON X5TX have powered on.
Poor picture quality or intermittent video play	<ul style="list-style-type: none"> ■ Check your video resolution with SDI input from your device is 1080p, 1080i, 720p, 576i, 480i. ■ Check the RECON X5TX antennas are well connected. ■ Check no signal blocking and interference between the transmitter and receiver ■ Ensure the appropriate channel has been selected by the remote control.
No audio	<ul style="list-style-type: none"> ■ Check your monitor or other equipment's volume is properly set and not in "MUTE" mode. ■ Check that the audio connectors are properly connected.

For a Class B digital device or peripheral, the instructions furnished the user shall include the following or similar statement, placed in a prominent location in the text of the manual:

Note: This equipment has been tested and found to comply with the limits for a Class B digital device, pursuant to part 15 of the FCC Rules. These limits are designed to provide reasonable protection against harmful interference in a residential installation. This equipment generates uses and can radiate radio frequency energy and, if not installed and used in accordance with the instructions, may cause harmful interference to radio communications. However, there is no guarantee that interference will not occur in a particular installation. If this equipment does cause harmful interference to radio or television reception, which can be determined by turning the equipment off and on, the user is encouraged to try to correct the interference by one or more of the following measures:

- Reorient or relocate the receiving antenna.
- Increase the separation between the equipment and receiver.
- Connect the equipment into an outlet on a circuit different from that to which the receiver is connected.
- Consult the dealer or an experienced radio/TV technician for help.

This device complies with part 15 of the FCC Rules. Operation is subject to the following two conditions:

- (1) This device may not cause harmful interference, and
- (2) this device must accept any interference received, including interference that may cause undesired operation.

FCC Caution: Any changes or modifications not expressly approved by the party Responsible for compliance could void the user's authority to operate this equipment.

RF exposure warning: This equipment must be installed and operated in accordance with provide instructions and the antenna used for this transmitter must be installed to provide a separation distance of at least 20 cm from all persons and must not be co-located or operation in conjunction with any other antenna or transmitter. End-users and installers must be provide with antenna installation instructions and transmitter operating conditions for satisfying RF exposure compliance.

Important Information

Read this user’s manual carefully before use. It contains important information and notes regarding operating.

The RECON X5 may not apply to the below cases:

- Repairs or product modification and alterations have been executed by unauthorized service personnel.
- Damages is caused by accidents including but not limited to lighting, water, fire, or moisture.
- Do not use power with specific power rating not compliant in the specification.
- The serial number on the product has been altered, deleted, removed or made illegible.

Danger: Be careful with electricity.

- Power to the units must be switched off before any work is undertaken.
- When the unit is not used for a long period, disconnect them from the power source.

Warning

- Do not open the product.
- Indoor use only.
- Do not block the ventilation slots on the product.
- Put the product away from direct sunlight or any source of heat.
- Do not spill liquid on the product, especially with corrosive liquids.
- To reduce the risk of fire or electric shock, do not expose the RECON X5TX and RECON X5RX to rain or moisture.

Special Notice

- Never use this product nearby an aircraft or high-accuracy electronic instrument, It will cause an interference and wrong effect on the operation.
- Never use this product in the following location where wireless wave will cause the abnormal video and audio (noise, blocked image...etc.).
 1. Installed in the walls with hard accessible material.
 2. This device should be situated away from the refrigerator or metal fitment.
 3. Crowded place.
- This product has been tested and manufactured to comply with each country’s safety rules. However, there is no guarantee that interference will not occur in a few particular installation. If the interference is happened, increase the separation distance between RECON X5TX and RECON X5RX.
- RECON X5 is susceptible to interference from 5GHz wireless device, such as router or other wireless device.
- Do not put RECON X5TX and RECON X5RX in a metal rack, which may hinder the wireless communication.
- When wireless transmission is beginning, the product takes about 15-20 seconds to start the system, the media receiver can not be operated during this time.
- Do Install the external antennas before use.

System Settings

Recon X5 can set up the system menu on the monitor by the supplied remote control.(for all menu items see the table below)

- 1.To power on RECON X5TX and RECON X5RX;
- 2.Connect the Recon X5RX with the monitor through the BNC cable, and turn on the power switch on the monitor;
- 3.Press the Menu button on the remote control, the main menu interface will appear on the monitor screen;
- 4.Press the left and right arrow keys to select the corresponding options;
- 5.Press the OK button to enter the sub menu, press BACK button to return to the previous menu.

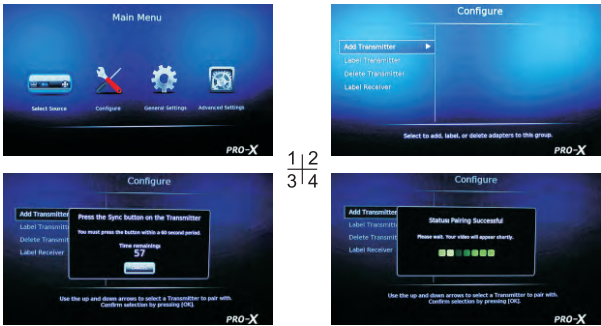


Remote Control

Main Interface	Sub Menu	Remark
Select Source	Recon X5	Select the different signal source
Configure	Add Transmitter	Add more transmitters
	Label Transmitter	label the transmitter
	Delete Transmitter	Delete the transmitter
	Label Receiver	Label the receiver
General settings	Language	Select the language
	Latency Mode	Game Mode is default Latency Mode
	Wireless Channel	Select the appropriate WIFI channel based on the environment
	Audio Mode	LPCM is default Audio Mode
Advanced Settings	System Information	Display the system information
	Reset to Factory	Restore the factory settings

Add a transmitter:(for example)

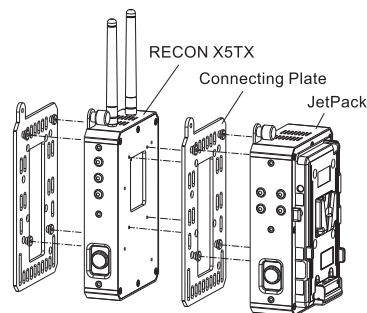
1. Select Configure in the Main Menu interface;
2. Select Add Transmitter in the Configure interface;
3. Select the transmitter you want to add, then press the Sync Button on the transmitter (see RECON X5TX);
4. Added successfully.



Installation

Step1: RECON X5TX the transmitter:

1. Install the 2 external antennas.
2. Connect the BNC cable to the High-Definition device's SDI OUT socket.
3. Connect the BNC cable to RECON X5TX's SDI IN socket.
4. Connect the JetPack or other power supply equipment.



Connect the JetPack to RECON X5TX

Step2: RECON X5RX the receiver:

1. Install the 2 external antennas
2. Adjust the DIP switch according to the input signal formats(See RECON X5RX)
3. Connect the BNC cable to RECON X5RX's SDI OUT socket
4. Connect the BNC cable to the display device's SDI IN socket.
5. Connect the AC power supply.

Step3: Power on

Press the power switches to power on your RECON X5TX and RECON X5RX, POWER LED indicators turn solid green.

If RECON X5TX receives SDI signals, VIDEO LED on the RECON X5 TX lights up; if the signal link between RECON X5TX and RECON X5 RX is established, LINK LED on the RECON X5RX lights up. In this case the communication is normal, you can normally transmit signals.

Introduction

This solution delivers uncompressed 1080i True Cinema video content to your monitor.

It operates the transmission in 5.15GHz-5.25GHz, 5.725GHz-5.85GHz(non-DFS Frequency Bands) frequencies that can adjust its frequency automatically in case of interference with another RF system.

With external antennas, it can transmit uncompressed video content with no latency.

Specification

Model	RECON X5		
Video Formats	SDI Input	1080p,1080i, 720p, 576i, 480i	
Audio Format	Digital Audio	Up to 3.072Mbps AC-3 and DTS	
Antenna	Omni – directional, high efficiency antenna system		
Frequency	5.15GHz-5.25GHz, 5.725GHz-5.85GHz(non-DFS Frequency Bands)		
Applicable Regulations	FCC, CE, NCC, CCC		
Interface		RECON X5TX	RECON X5RX
Audio/Video	SDI Input	1	No
	SDI Output	1	2
Power Supply	Input	Battery or JetPack	11V-17V DC
Power Switch on Operation Panel		1RED	
LED Light	POWER LED	1	
	VIDEO LED	1	
	LINK LED	1	
Dimensions(mm)		175(W)×105(L)×3(H)	180(W)×100(L)×32(H)

OVERVIEW

RECON X5TX

Operation Panel

■Power Switch with LED indicator

Press to turn RECON X5TX on or off. The above LED indicator turns green when the power is on.

■LED Lights

VIDEO LED lights up when RECON X5TX receives and transmits signal.

LINK LED lights up when the signal link between RECON X5TX and RECON X5RX is established.

Back Panel

1. SDI IN

For SDI signal input

2. SDI OUT

SDI signal loop out

Power Interface

1. Power Input Interface

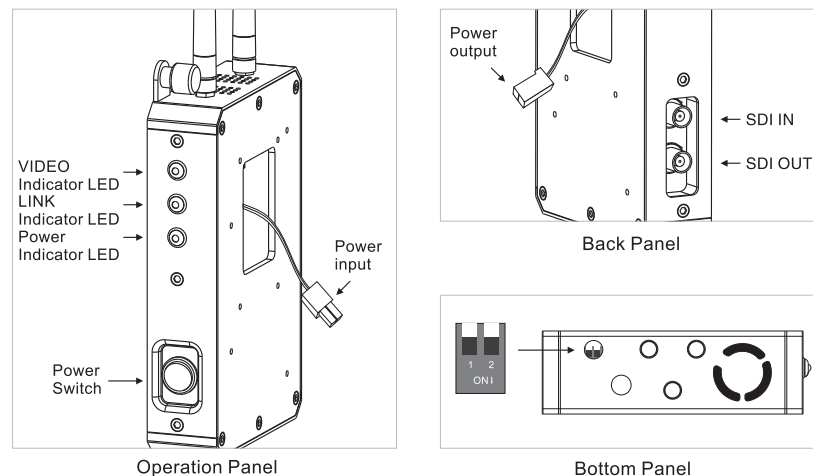
Connect to JetPack or other power supply, input voltage: DC 11V-17V (RED+, BLACK-)

2. Power Output Interface

Connect to the camera, output voltage: DC 11V-17V(RED+, BLACK-)

Sync Button

When users need to add the transmitter, press this sync button to couple with the receiver. When adding, press lever 1 to ON, two seconds later, reset it to OFF.



RECON X5RX

Operation Panel

Power Switch with LED indicator

Press to turn RECON X5RX on or off. The above LED indicator turns red when the power is on.

LED Lights

VIDEO LED lights up when RECON X5RX receives and transmits signal.

LINK LED lights up when the signal link between RECON X5TX and RECON X5RX is established.

Terminal Connection Panel

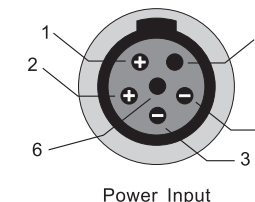
1. 2 SDI OUT

SDI signal loop out

2. Power Input Interface (Type: EGG.2B.306)

Connect to external power supply equipment, input voltage: DC 11V-17V

Pins: 1,2: +; 3,4: -; 5: Contact Judgment, need to connect the negative: 6: Empty



DIP switch of signal format

When signal input is 1080p50, 1080p25, 1080i50, 720p50, turn lever 1 upward to OFF;

When signal input is other formats, turn lever 1 downward to ON.

IR remote control signal receiving window

The remote control setup the system through this window.

Note: The remote control must face to this window when the system is setting up.

