



Yale® Assure Lock® 2 Key Free Deadbolt Installation Guide (Keypad YRD430 or Touchscreen YRD450)

This manual will walk you through all the required steps to install your new Yale Assure Lock 2 to your door.

Remove existing deadbolt and check door measurements with included template

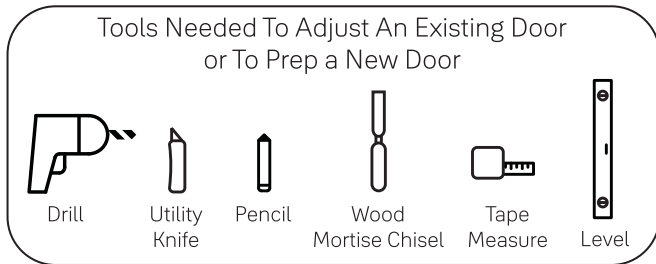
Download the Yale Access App

Create an account

From the app menu, tap "Set up a Device"

Scan the QR code located in the battery compartment

Follow the installation steps in your Yale Access App, or this manual



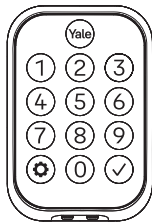
Failure to follow these instructions could result in damage to the product, voiding the factory warranty and could lead to failure of the product to provide access.



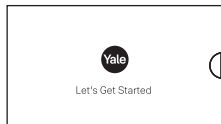
In The Box



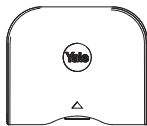
Yale Smart Module
(with select models)



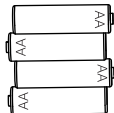
Exterior Keypad



Guide

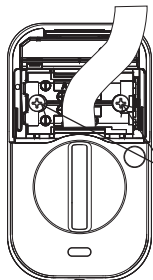


Battery Cover



x4

Batteries

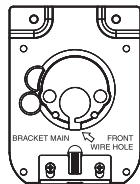


Interior Lock



x2

Screws and
Washers
(pre-installed)

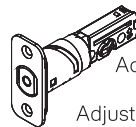


Mounting Plate

Hardware Components



Reset Pin



Adjustable Deadbolt
(AYRDB-DRIVE
Adjustable Drive-In Deadbolt
available for purchase)



Strike Plate



x4

Strike Plate
and
Deadbolt Screws



x2

Screw Set B
Blue for
1-3/8"
Door Thickness



x2

Screw Set C
Black for
Standard 1-3/4"
Door Thickness



x2

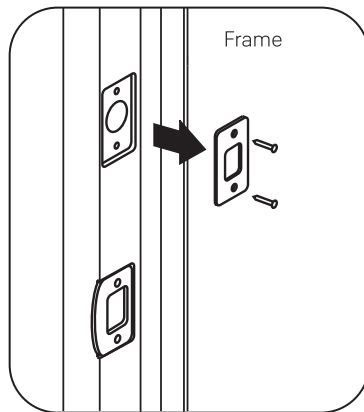
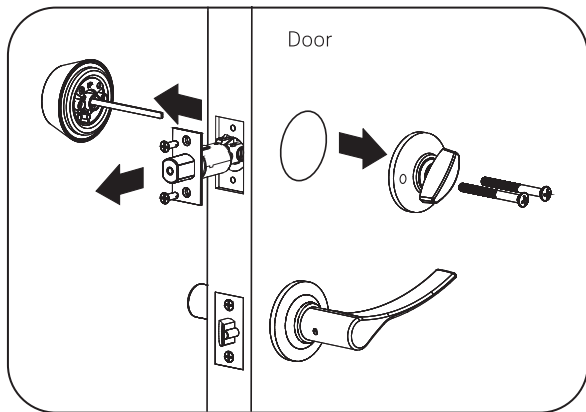
Screw Set D
Silver for
2 to 2-1/4"
Door Thickness



Remove Existing Deadbolt



Keep your old deadbolt hardware until your new lock has been successfully installed.





Check Door Measurements and Adjust If Needed

Check Door:

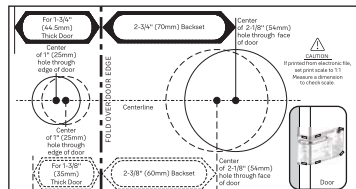
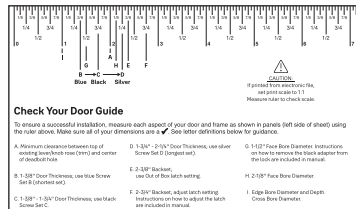
Tear off the Door Checker page of this guide and follow checker instructions to verify your door measurements and make any needed adjustments.



There are some cases where existing holes cannot be adjusted to be compatible.

New Door:

Tear off the Template page of this guide and use either 2-1/8" or 1-1/2" template to prepare a new door that has no holes or to adjust existing holes to be compatible.

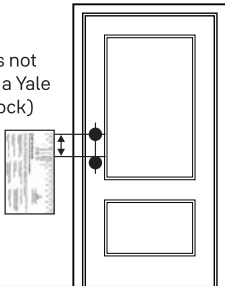


Check Your Door Using Ruler on Other Side

Measure Clearance

✓ Greater than A

✗ Less than A
(Your door is not
a match for a Yale
electronic lock)

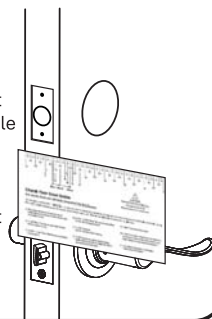


Measure Door Thickness

✓ B, C or D

✗ Less than B
(Your door is not
a match for a Yale
electronic lock)

✗ Greater than D
(Your door is not
a match for a Yale
electronic lock)

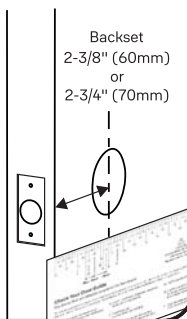


Measure Backset

✓ Equals E or F

✗ Less than E or F
(Your door is not
a match for a Yale
electronic lock)

✗ Greater than E or F
(Your door is not
a match for a Yale
electronic lock)

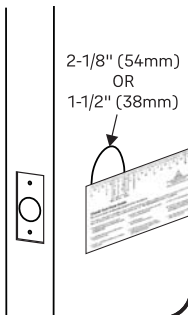


Measure Face Bore

✓ Equals G or H

✗ Less than G
(Adjust diameter
to G or H)

✗ Greater than H
(Your door is not
a match for a Yale
electronic lock)

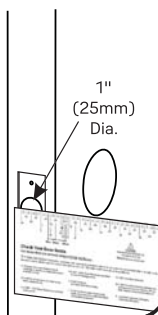


Measure Cross Bore

✓ Equals I

✗ Less than I
(Adjust diameter
to 1")

✗ Greater than I
(Your door is not
a match for a Yale
electronic lock)



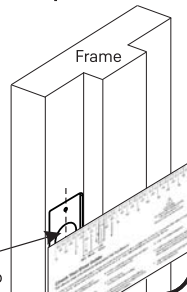
Measure Strike Pocket Diameter and Depth

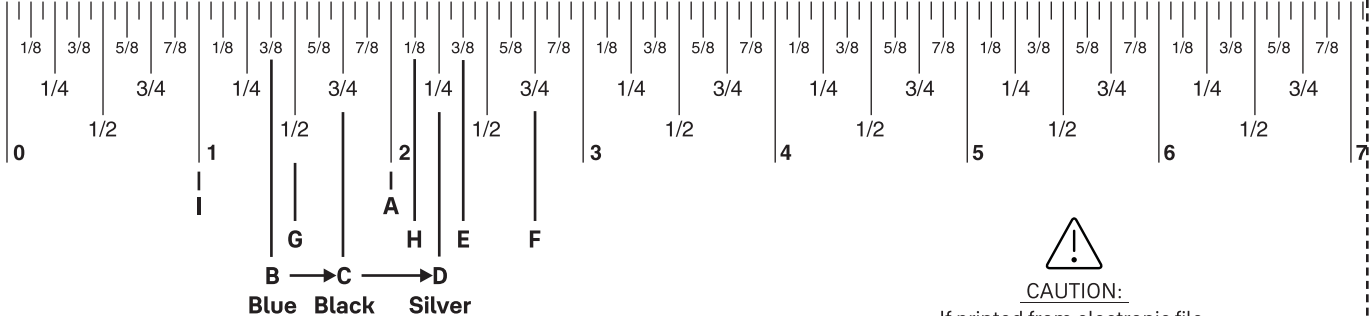
✓ Equals I

✗ Less than I
(Adjust diameter
and depth to 1")

✗ Greater than I
(Your door is not
a match for a Yale
electronic lock)

1" (25mm) Dia.
1" (25mm) Deep





CAUTION:

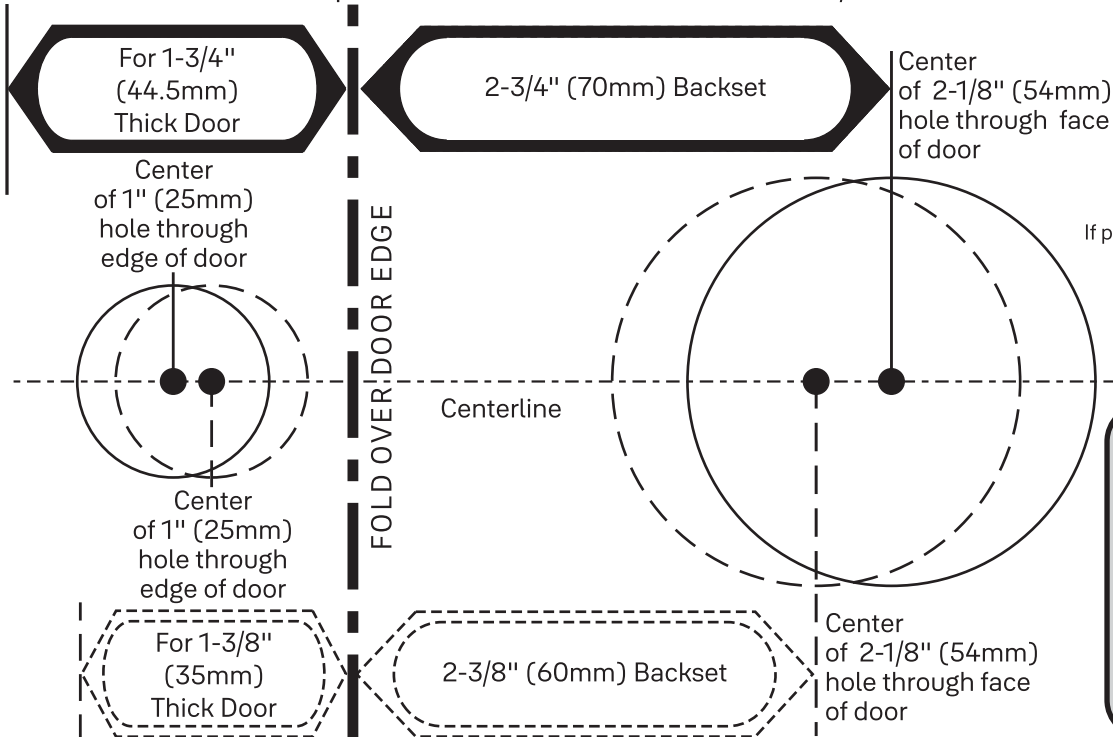
If printed from electronic file,
 set print scale to 1:1
 Measure ruler to check scale.

Check Your Door Guide

To ensure a successful installation, measure each aspect of your door and frame as shown in panels (left side of sheet) using the ruler above. Make sure all of your dimensions are a ✓. See letter definitions below for guidance.

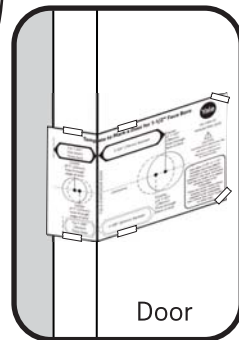
- | | | |
|---|---|--|
| <p>A. Minimum clearance between top of existing lever/knob rose (trim) and center of deadbolt hole.</p> | <p>D. 1-3/4" - 2-1/4" Door Thickness; use silver Screw Set D (longest set).</p> | <p>G. 1-1/2" Face Bore Diameter. Instructions on how to remove the black adapter from the lock are included in manual.</p> |
| <p>B. 1-3/8" Door Thickness; use blue Screw Set B (shortest set).</p> | <p>E. 2-3/8" Backset; use Out of Box latch setting.</p> | <p>H. 2-1/8" Face Bore Diameter.</p> |
| <p>C. 1-3/8" - 1-3/4" Door Thickness; use black Screw Set C.</p> | <p>F. 2-3/4" Backset; adjust latch setting. Instructions on how to adjust the latch are included in manual.</p> | <p>I. Edge Bore Diameter and Depth. Cross Bore Diameter.</p> |

Template to Mark a Door for 2-1/8" Face Bore

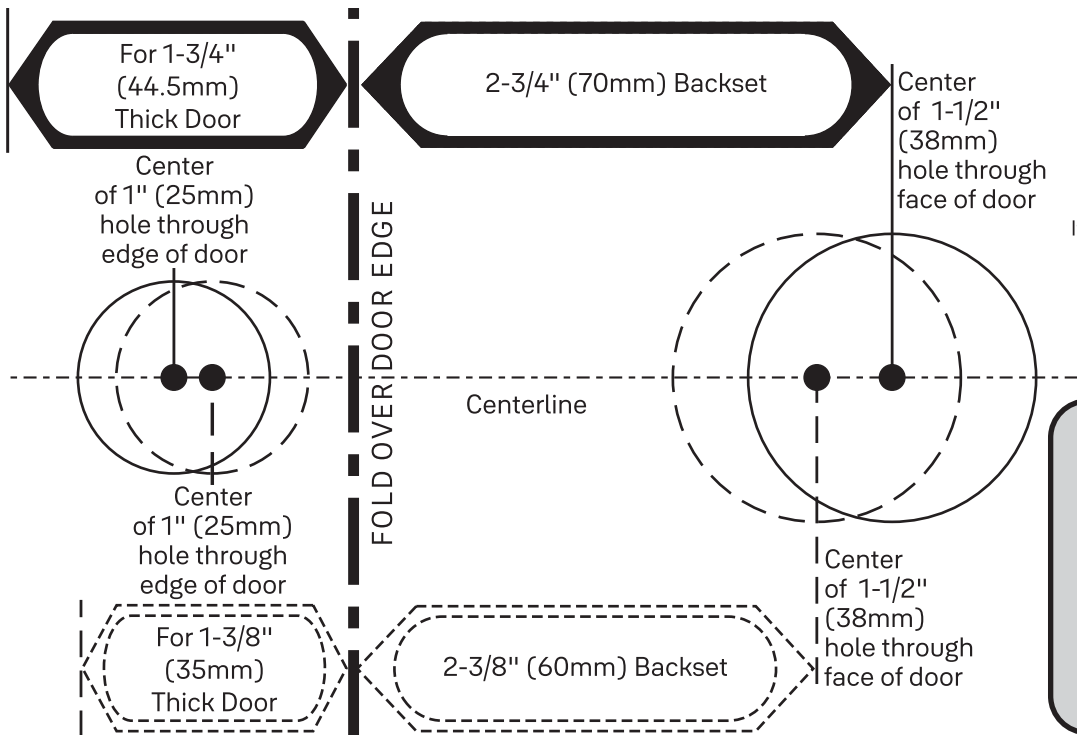


CAUTION:

If printed from electronic file,
set print scale to 1:1
Measure a dimension
to check scale.

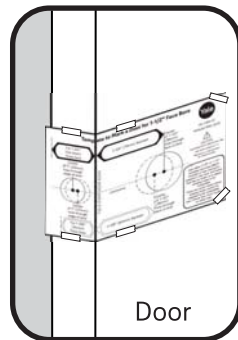


Template to Mark a Door for 1-1/2" Face Bore



CAUTION:

If printed from electronic file,
set print scale to 1:1
Measure a dimension
to check scale.





Install Deadbolt and Strike Plate



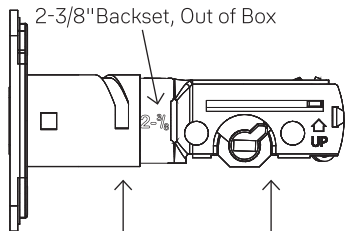
x2

For Deadbolt
Actual Size

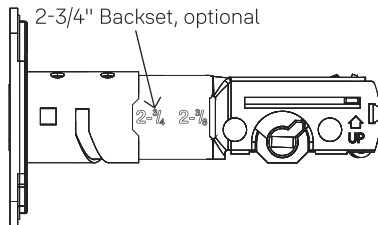


x2

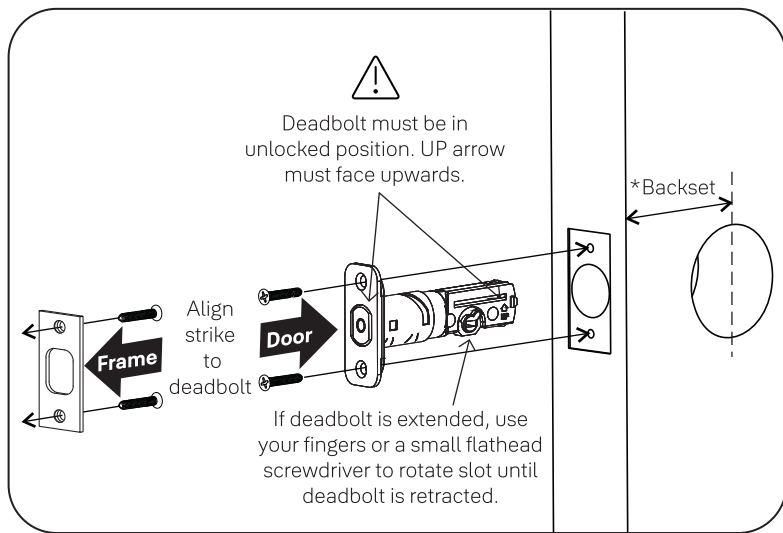
For Strike Plate
Actual Size



To Adjust:
Twist neck while holding body stable



*Correct deadbolt length is based on backset. Choose 2-3/8" or 2-3/4".
Door Checker measurements E and F can help you verify your backset measurement.

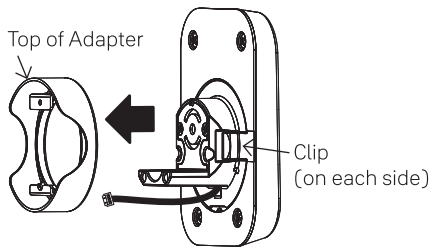


4

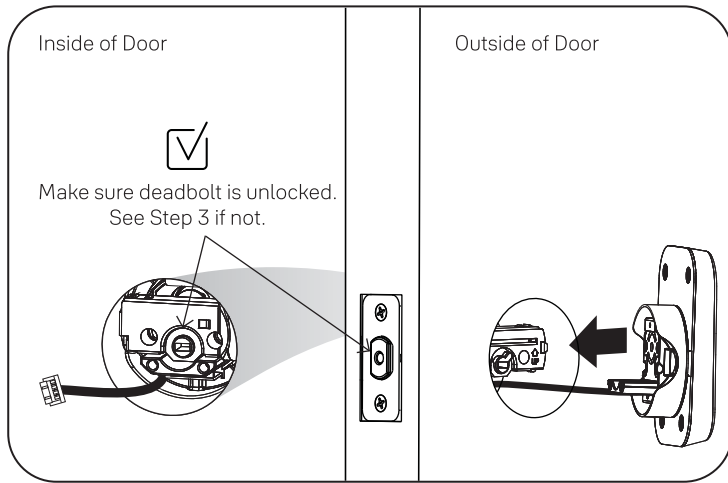
Install Exterior Keypad



Measurement G on the Door Checker will help you verify your face bore measurement. If hole is less than 2-1/8", remove adapter by squeezing black plastic clips on either side and pulling adapter off of keypad.

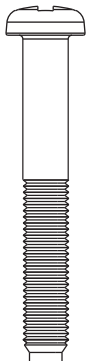


You should install the lock with the door open.
Do not close door until all steps are completed successfully.





Install Mounting Plate



x2

Actual Size
Bolt Set C, Black
for a Standard
1-3/4" Door
Thickness

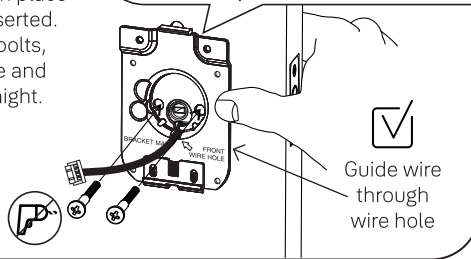
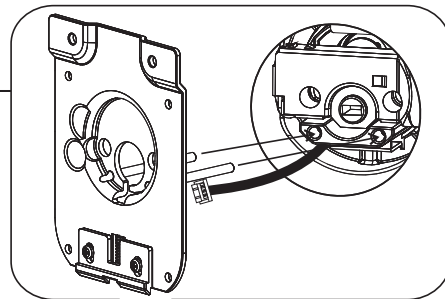


IMPORTANT: There are 3 bolt sets with your lock. Choose the bolt length for your door thickness. Measurement B, C or D on the Door Checker will help you identify which bolts to use.

Inside of Door

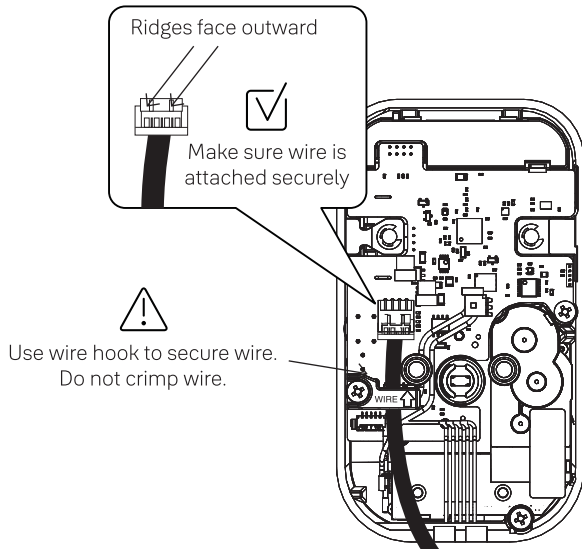


Hold the keypad in place until bolts are inserted. As you tighten bolts, make sure plate and keypad are straight.





Attach Wire to Inside of Interior Lock



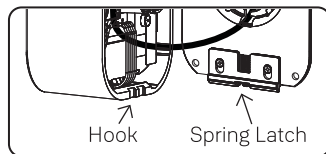
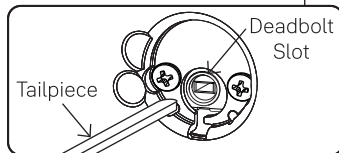


Install Interior Lock

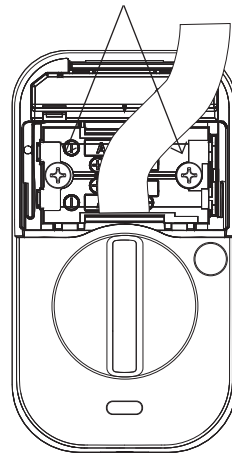
Thumbturn must be vertical so that tailpiece can slide into the slot of the unlocked deadbolt.

Insert tailpiece into slot.

Push lock to door then adjust position until the mounting plate spring latch clicks into place and holds the bottom of the lock.

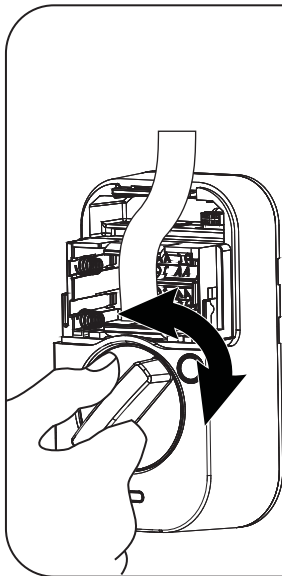


Screws are pre-installed. Tighten when lock is seated on mounting plate. When fully tightened, lock should be flush to door.





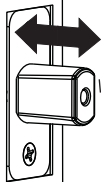
Test Thumbturn



If deadbolt does not lock and unlock when you turn the thumbturn:

Check that deadbolt is centered in face bore hole.
Step 3

Check that tailpiece is inserted into deadbolt slot.
Step 7

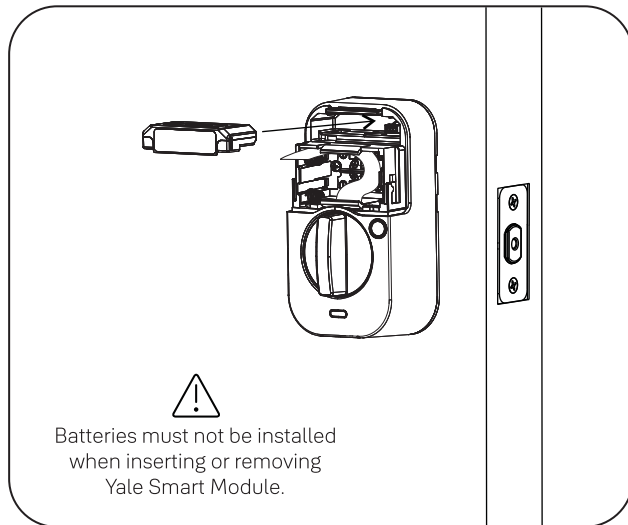


Smooth deadbolt operation will enhance your battery life.

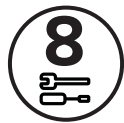


Install Yale Smart Module

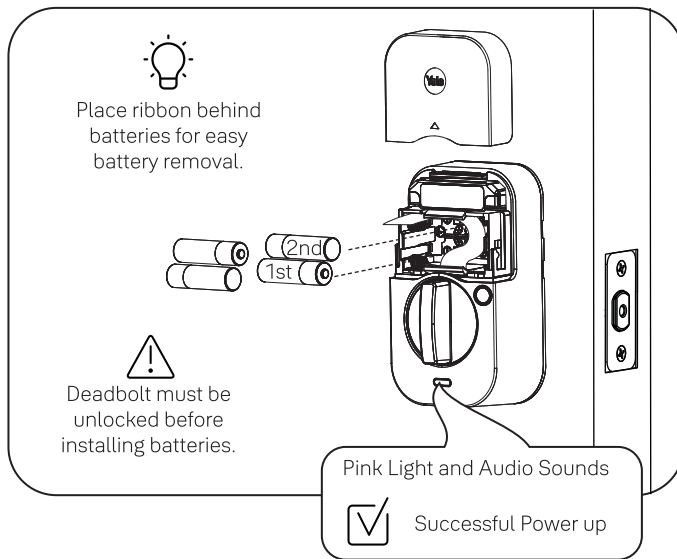
Included with select models



For more information about Yale Smart Modules and smart home features visit: US.YaleHome.com/Smart



Install Batteries and Replace Cover

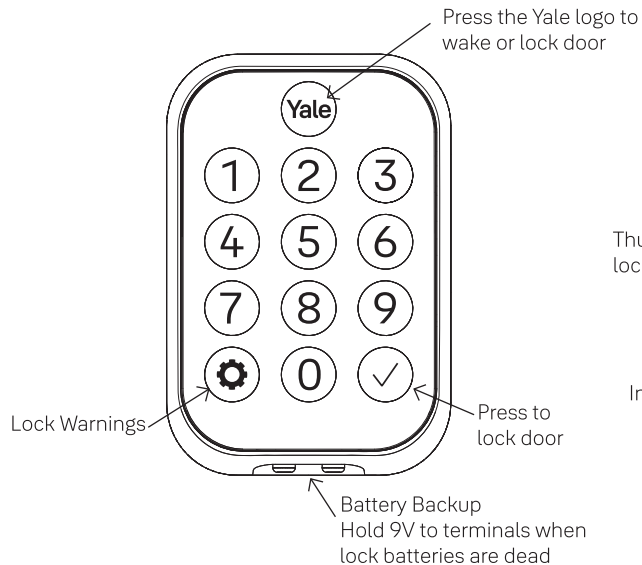


Congratulations, you've installed the Yale Assure Lock® 2 Key Free Deadbolt!

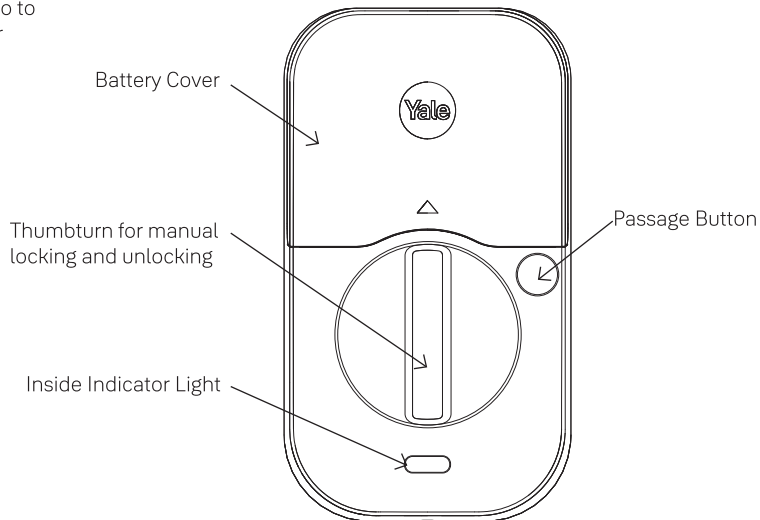


Using Your Lock

Exterior Keypad



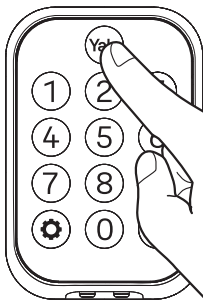
Interior Lock



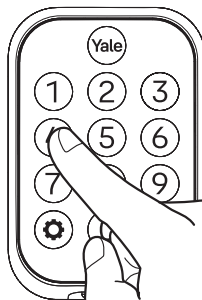


Unlocking Door

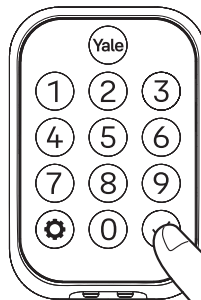
Press the Yale logo to wake lock



Enter entry code



Press ✓





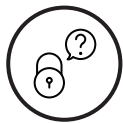
Setting Definitions

Setting	Default	Definition
Codes		
Programming Code	Automatically created by the Yale Access App	This code is used to access programming features: Handing, Smart Module integration, and Diagnostics. This code cannot be used to unlock the door. To enter programming mode, find your programming code in the Yale Access App, enter in the keypad and press the gear symbol.
Entry Codes		Entry codes can be created for users to allow them to lock/unlock the door from the lock keypad.
Security Settings		
Hide Entry Codes	Off	If turned on, all entry codes within the app will be hidden from view.
Verified Access	Off	If turned on, biometric/passcode authentication is required from the app to operate the lock.
Notifications		
Smart Alerts	Off	Create alerts you wish to receive from the app.
Automation		
Auto-Lock	Off	Door will automatically lock. When paired with DoorSense, the door will not lock until the door is completely closed or choose to auto-lock based on a timer, between 10 seconds and 30 minutes.
Auto-Unlock	Off	Door will automatically lock unlock when you arrive home.
DoorSense	Must be installed	Allows you to know when your door is opened and closed.



Setting Definitions

Setting	Default	Definition
Advanced Device Settings		
Volume	On	This feature can be changed in the Yale Access App. You can turn the lock volume on or off.
Operating Mode: Normal	On	When the lock is in normal operating mode all entry codes will work and the lock can be unlocked/locked from the app and voice assistants.
Operating Mode: Vacation	Off	This feature can be enabled in the Yale Access App. When enabled all entry code access will be restricted. Users can still lock and unlock the door with the app.
Inside Indicator Light	Off	This feature can be enabled in the Yale access App. When turned on, it will show the active status (locked) of the lock. This light will also inform you when the batteries are low, passage mode is enabled, and successful pairing.
Keypad Security: Shutdown Timing	60 seconds	The lock will shutdown (flashing RED) for sixty (60) seconds and not allow operation after the wrong code entry limit (5 attempts) has been made. This timing can be changed between 10 seconds to 3 minutes in the app.
Keypad Security: Wrong Code Limit	5 times	After five (5) unsuccessful attempts at entering a valid entry code, the lock will shut down and not allow operation for sixty (60) seconds. This timing can be changed from the app from 3 to 10.
One Touch Locking	On	Lock the keypad with the touch of a button.
Passage Button	Off	The passage button can be used to temporarily turn off auto-lock, so you can easily come and go without needing to unlock your door each time. To turn on passage mode, press the passage button on the inside of the lock. To turn off passage button, simply lock your door.



Troubleshooting

Symptom	Suggested Action
Lock does not respond - door is open and accessible.	<ul style="list-style-type: none">• Keypad becomes active when the Yale logo is pressed.• Verify contact with the logo.• If keypad numbers are visible, check they respond when pressed.• Check batteries are installed and oriented correctly (polarity) in battery case. Replace batteries* if batteries are dead.• Check keypad cable is fully connected and not pinched.
Lock does not respond - door is locked and inaccessible.	<ul style="list-style-type: none">• Batteries may not have enough power. Replace batteries*.• Apply a 9V battery to terminals below the keypad for backup power option.
Lock is on for a while then shows no reaction. Lights dim.	<ul style="list-style-type: none">• Batteries do not have enough power. Replace batteries*.
Lock chimes indicating code acceptance, but door will not open.	<ul style="list-style-type: none">• Check for any foreign objects between door and frame.• Check that the cable is firmly connected to inside lock.
Lock operates to allow access, but will not automatically unlock.	<ul style="list-style-type: none">• Check to see if Auto-Lock is enabled.• Disable Auto-Lock to lock the door (manually).
Lock responds "Low Battery".	<ul style="list-style-type: none">• This is the alert to replace the batteries. Replace all four (4) batteries* with new AA Alkaline batteries.

*When batteries are replaced, Smart Module locks have a real time clock that will be set through the User Interface. It is recommended to verify correct date and time; particularly those locks operating under Daylight Savings Time.



Troubleshooting

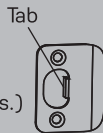
Symptom	Suggested Action
Entry code will not register.	<ul style="list-style-type: none">• If low battery indicator is lit, change batteries*.• Entry code must consist of 4 to 8 digits.• The same entry code cannot be used for multiple users.• Entry code must be entered within 5 seconds (while keypad is active) or process will have to be restarted.
Upon entering an entry code and pressing the check key, the lock displays "invalid code" error or lock times out without responding.	<ul style="list-style-type: none">• Verify entered code is a valid, previously programmed, 4 to 8 digit code.• Vacation mode is on. Only an admin user can change vacation mode. Contact the admin.
Upon entering an entry code and pressing the check key, lock responds "Wrong number of digits".	<ul style="list-style-type: none">• The digits entered were incorrect or incomplete. Re-enter the correct code followed by the check key.
Deadbolt does not extend when locking the door with keypad.	<ul style="list-style-type: none">• Lock was not handed properly. Rehand lock through Settings Menu.
Lock operates, but makes no sound.	<ul style="list-style-type: none">• Check in the Yale Access App to see if Volume is set to off.

*When batteries are replaced, Smart Module locks have a real time clock that will be set through the User Interface. It is recommended to verify correct date and time; particularly those locks operating under Daylight Savings Time.



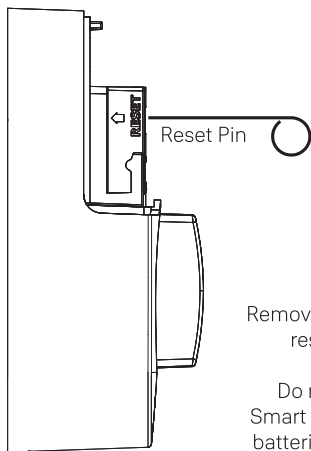
Hardware Troubleshooting

Symptom	Solution
Deadbolt grinds and will not extend to lock when using an entry code but thumbturn locks and unlocks smoothly.	Attempt re-handing using the Settings Menu. You must use Programming Code to access the Settings Menu.
Deadbolt is hitting the strike plate.	Reposition the strike plate to align with deadbolt.
Deadbolt is not fully extending.	Increase depth of the deadbolt strike pocket in frame.
Resistance when locking deadbolt that requires pushing or pulling on the door to align deadbolt and latch.	<p>Adjust your existing knob, lever or handleset strike plate. Latch engagement into the strike is the main component used for door alignment.</p> <p>To adjust Knob/Lever/Handleset strike plate:</p> <ol style="list-style-type: none">1. Remove plate from door frame with a hand screwdriver. (Using an electric driver may strip screw heads or enlarge screw holes.)2. Locate tab on strike plate. Bend the tab towards surface of strike. Note: A small change may be all that is required.3. Reinstall strike plate using a screwdriver and test again.4. If door cannot be adjusted sufficiently with strike tab, both knob/lever/handleset latch and deadbolt could require adjustment – we suggest you contact a local locksmith for assistance. <p>For help with misalignments, watch our door alignment video: US.YaleHome.com/Support</p>





Resetting Lock to Factory Defaults



Reset Pin

Remove 1 battery to
reset lock.

Do not install
Smart Module with
batteries installed.

Interior Lock

When lock is reset to factory defaults, all entry codes (including the programming code*) are deleted and all programming features are reset to original default settings.

To Reset Lock:

Remove battery cover and one battery.
Remove Yale Smart Module if installed.
Press reset button with reset tool provided in the hardware box.
While pressing reset button a minimum of 3 seconds, reinstall Yale Smart Module then the battery.
Replace cover.

*After reset, lock must be set up with Yale Access App



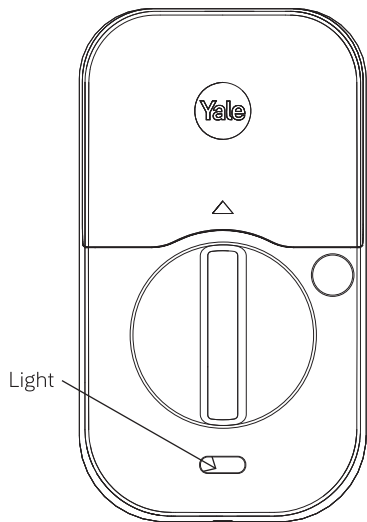
Keypad Alerts



Keypad	Meaning
Gear flashes Amber	Low Battery Level 1
Gear flashes Amber	Low Battery Level 2
Gear flashes Red then stays red until batteries are replaced	Low Battery Level 3
Checkmark flashes	Pairing Success
X then gear flashes Red	Jammed Lock
Gear flashes White	Pairing/successful pairing
Gear flashes Red during pairing	Failed Pair



Interior Lock Light Alerts



Inside Lock Light	Meaning
Blue flashing	Low Battery Level 1
Blue flashing	Low Battery Level 2
Blue flashing	Low Battery Level 3
Orange flashing	Alarm System armed Home
Green flashing	Alarm System disarmed Home
Red flashing	Alarm System armed Away
Green flashing	Alarm System disarmed Away
Pink flashing	Passage Mode enabled
Red flash, flash, 3 second pause, repeat	Locked state
Green flash, flash 3 second pause, repeat	Unlocked state
Green 3 second solid	Pairing Success
Red 3 second solid	Pairing Fail

This page intentionally left blank.

Warning: Changes or modifications to this device, not expressly approved by **Yale Home** could void the user's authority to operate the equipment.

Manufacturer : iRevo-ASSA ABLOY Korea

Model : YRD430/450

DC 6V, Max 2A

IMPORTANT NOTE

While Yale® has included several features to prevent lockout (9-Volt battery failsafe, low battery warnings), it is still possible for a lockout situation to occur. Because this product does not have a physical key, Yale® recommends to use this product in an environment where there are additional entry points into the dwelling.

Yale Home

24/7 Support: 1-855-213-5841 • US.YaleHome.com

Yale® and Assure Lock® 2 are registered trademarks of Yale Home. Other products' brand names may be trademarks or registered trademarks of their respective owners and are mentioned for reference purposes only. © Copyright 2021. All rights reserved. Reproduction in whole or in part without the express written permission of Yale Home is prohibited.

FCC

This device complies with part 15 of the FCC Rules. Operation is subject to the following two conditions: (1) This device may not cause harmful interference, and (2) this device must accept any interference received, including interference that may cause undesired operation.

Any changes or modifications (including the antennas) to this device that are not expressly approved by the manufacturer may void the user's authority to operate the equipment.

Note: This equipment has been tested and found to comply with the limits for a Class B digital device, pursuant to part 15 of the FCC Rules. These limits are designed to provide reasonable protection against harmful interference in a residential installation. This equipment generates, uses and can radiate radio frequency energy and, if not installed and used in accordance with the instructions, may cause harmful interference to radio communications. However, there is no guarantee that interference will not occur in a particular installation. If this equipment does cause harmful interference to radio or television reception, which can be determined by turning the equipment off and on, the user is encouraged to try to correct the interference by one or more of the following measures:

- Reorient or relocate the receiving antenna.
- Increase the separation between the equipment and receiver.
- Connect the equipment into an outlet on a circuit different from that to which the receiver is connected.
- Consult the dealer or an experienced radio/TV technician for help.

Modifications not expressly approved by the manufacturer could void your authority to operate the equipment under FCC rules.

ISED

This device contains licence-exempt transmitter(s)/receiver(s) that comply with Innovation, Science and Economic Development Canada's licence-exempt RSS(s). Operation is subject to the following two conditions:

(1) This device may not cause interference.

(2) This device must accept any interference, including interference that may cause undesired operation of the device.

L'émetteur/récepteur exempt de licence contenu dans le présent appareil est conforme aux CNR d'Innovation, Sciences et Développement économique Canada applicables aux appareils radio exempts de licence. L'exploitation est autorisée aux deux conditions suivantes :

(1) L'appareil ne doit pas produire de brouillage;

(2) L'appareil doit accepter tout brouillage radioélectrique subi, même si le brouillage est susceptible d'en compromettre le fonctionnement.

RF Exposure Statement

FCC and IC RF Radiation Exposure Statement: This equipment complies with FCC and IC RF radiation exposure limits set forth for uncontrolled environments. This equipment should be installed and operated with a minimum distance of 20cm (may be adjusted according to actual calculation result) between the radiator and your body. This transmitter must not be co-located or operating in conjunction with any other antenna or transmitter.

RF du FCC et IC d'exposition aux radiations: Cet appareil est conforme aux limites d'exposition au rayonnement RF stipulées par la FCC et IC pour une utilisation dans un environnement non contrôlé. Les antennes utilisées pour cet émetteur doivent être installées et doivent fonctionner à au moins 20 cm de distance des utilisateurs et ne doivent pas être placées près d'autres antennes ou émetteurs ou fonctionner avec ceux-ci. Les installateurs doivent s'assurer qu'une distance de 20 cm sépare l'appareil (à l'exception du combiné) des utilisateurs