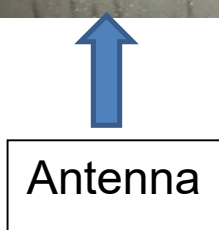
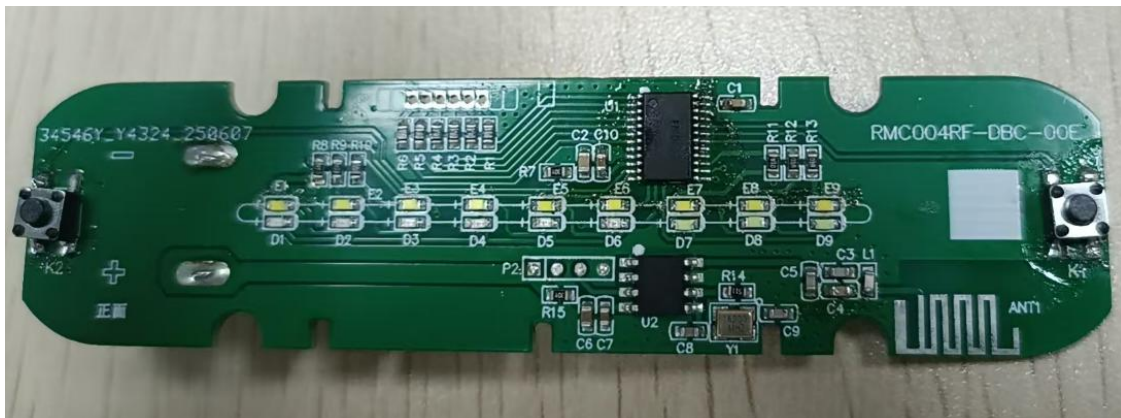
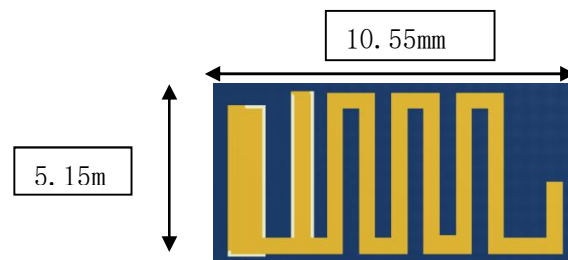


# Antenna specification

|                          |                                      |
|--------------------------|--------------------------------------|
| Manufacturer:            | Zhongshan Winstar Electrical Co.,Ltd |
| Model                    | RMC004RF-DB                          |
| Operating frequency:     | 2440 MHz                             |
| Antenna Designation:     | PCB Antenna                          |
| Antenna Gain (Peak):     | 2.01dBi                              |
| Radiation orientation:   | Omni-directional                     |
| Installation orientation | Horizontal direction                 |

Address: SANDUN INDUSTRY DISTRICT MINZHONG TOWN, ZHONGSHAN  
GUANGDONG CHINA.

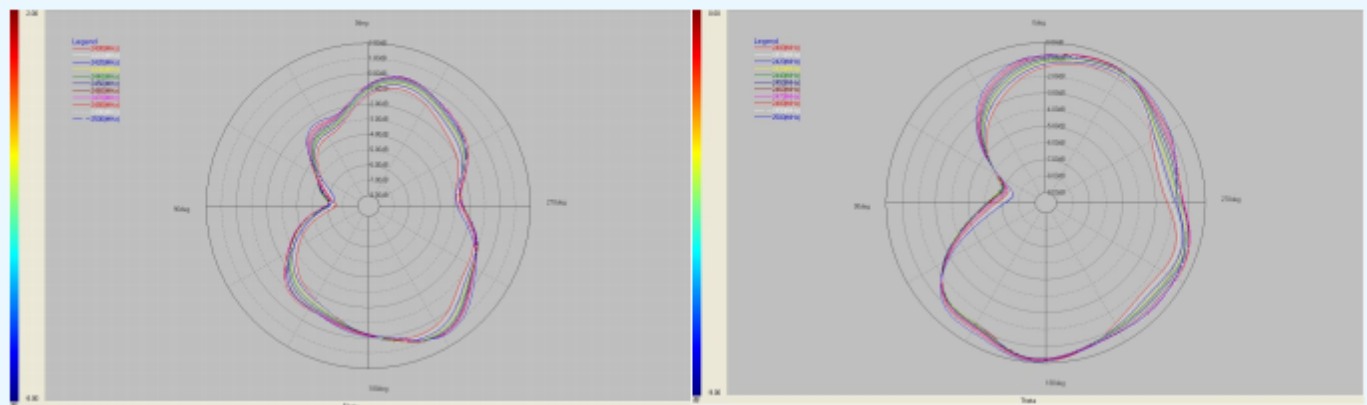
## Antenna dimension



## Antenna Pattern (3-D)

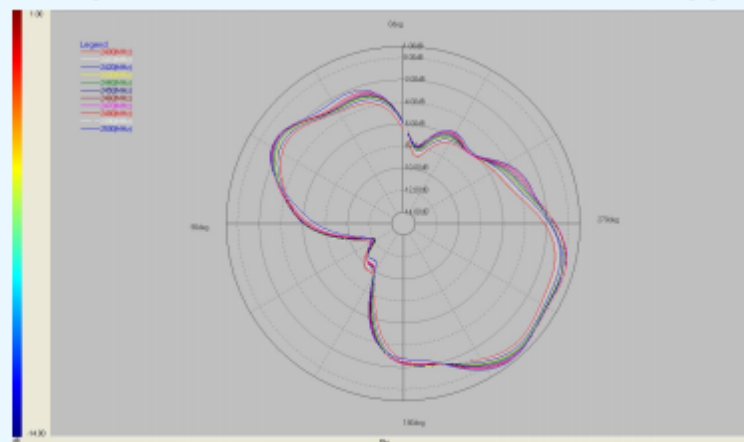
### 1) 2440MHz

#### 2.4GHz天线方向图



$\Phi = 0$

$\Phi = 90$



$\theta = 90$

Antenna Efficiency

2.4G天线效率、增益:

| 频率(MHz) | 效率(%) | 增益(dBi) |
|---------|-------|---------|
| 2400    | 58%   | 1.40    |
| 2410    | 59%   | 1.56    |
| 2420    | 61%   | 1.77    |
| 2430    | 62%   | 1.90    |
| 2440    | 64%   | 2.01    |
| 2450    | 66%   | 2.12    |
| 2460    | 67%   | 2.24    |
| 2470    | 68%   | 2.29    |
| 2480    | 69%   | 2.36    |
| 2490    | 70%   | 2.40    |
| 2500    | 69%   | 2.39    |

SWR:

