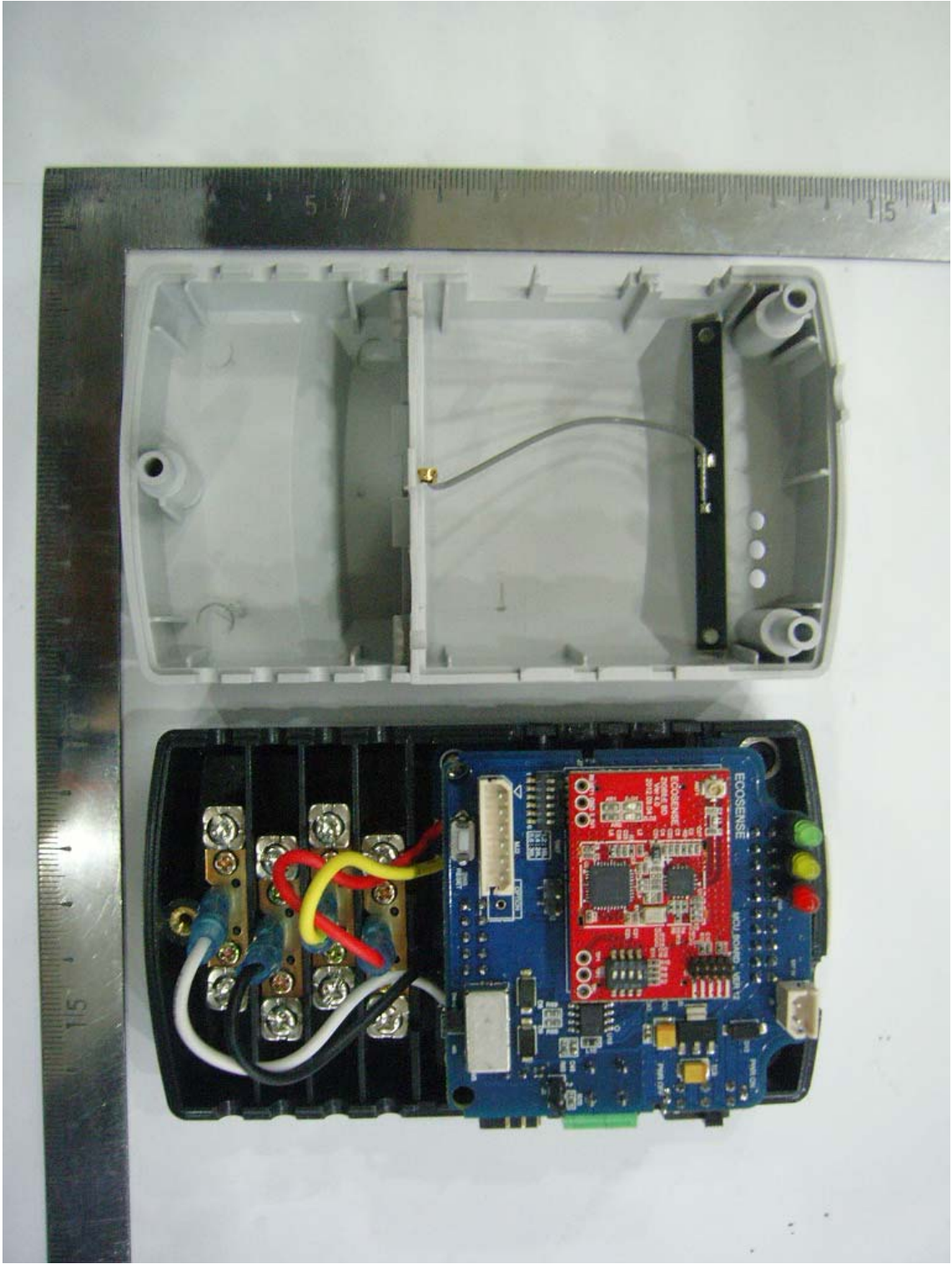


Interior view of EUT

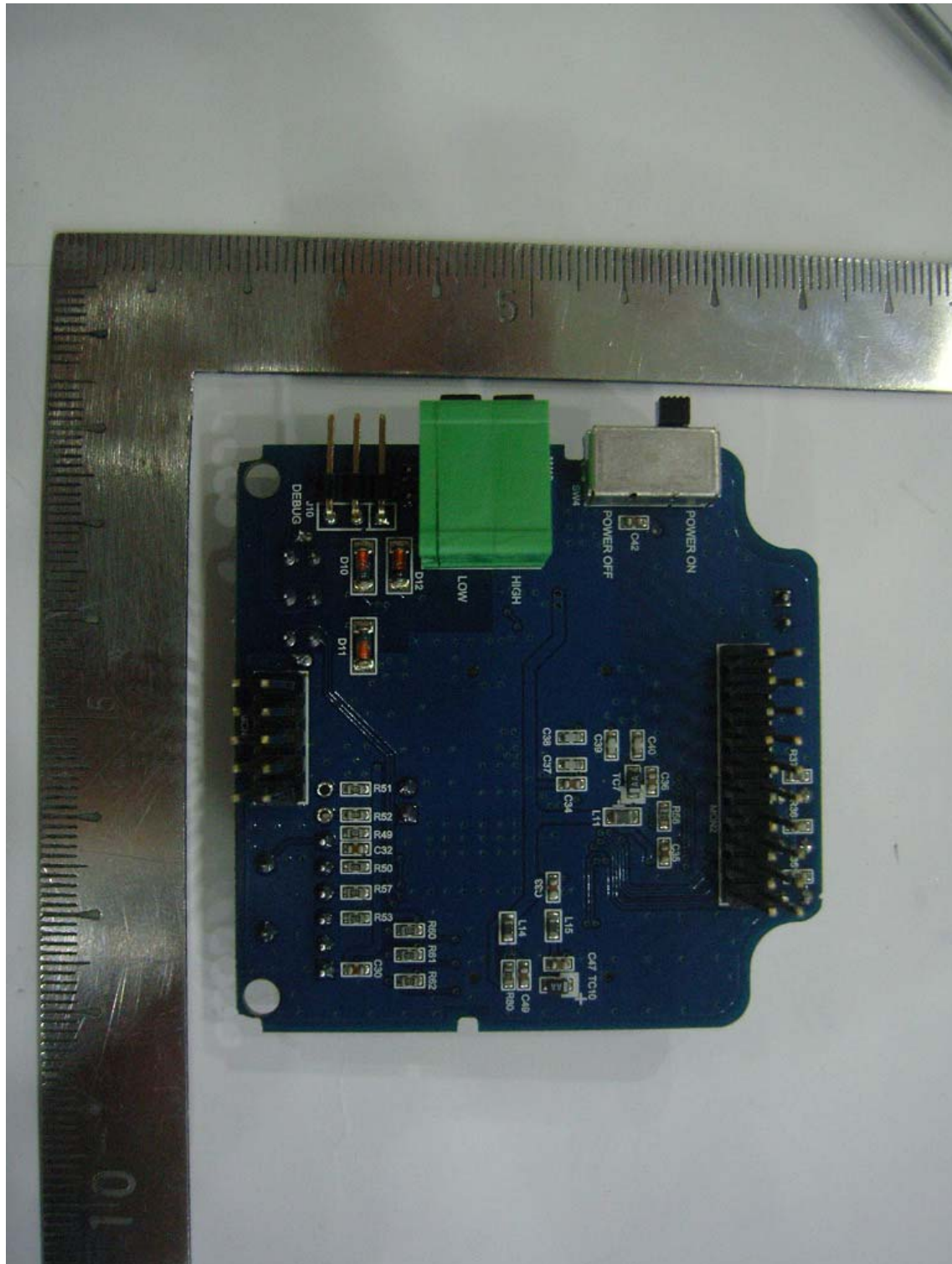
Internal Photos



**View of Main PCB(Top)**



A photograph of a blue printed circuit board (PCB) with various electronic components. A metal ruler is placed horizontally above the board for scale. The board features labels such as 'POWER ON', 'POWER OFF', 'HIGH', 'LOW', 'DEBUG', and 'J10'. A large multi-pin connector is visible on the right side. The components include resistors (R51, R52, R49, C32, R50, R57, R53, R50, R51, R52, R50, R51, R52), capacitors (C40, C39, C38, C37, C34, C33, C32, C31, C30, C29, C28, C27, C26, C25, C24, C23, C22, C21, C20, C19, C18, C17, C16, C15, C14, C13, C12, C11, C10, C9, C8, C7, C6, C5, C4, C3, C2, C1, C0), and a green connector. The board is labeled with 'POWER ON', 'POWER OFF', 'HIGH', 'LOW', 'DEBUG', and 'J10'. A large multi-pin connector is visible on the right side. The components include resistors (R51, R52, R49, C32, R50, R57, R53, R50, R51, R52, R50, R51, R52), capacitors (C40, C39, C38, C37, C34, C33, C32, C31, C30, C29, C28, C27, C26, C25, C24, C23, C22, C21, C20, C19, C18, C17, C16, C15, C14, C13, C12, C11, C10, C9, C8, C7, C6, C5, C4, C3, C2, C1, C0), and a green connector. The board is labeled with 'POWER ON', 'POWER OFF', 'HIGH', 'LOW', 'DEBUG', and 'J10'. A large multi-pin connector is visible on the right side.

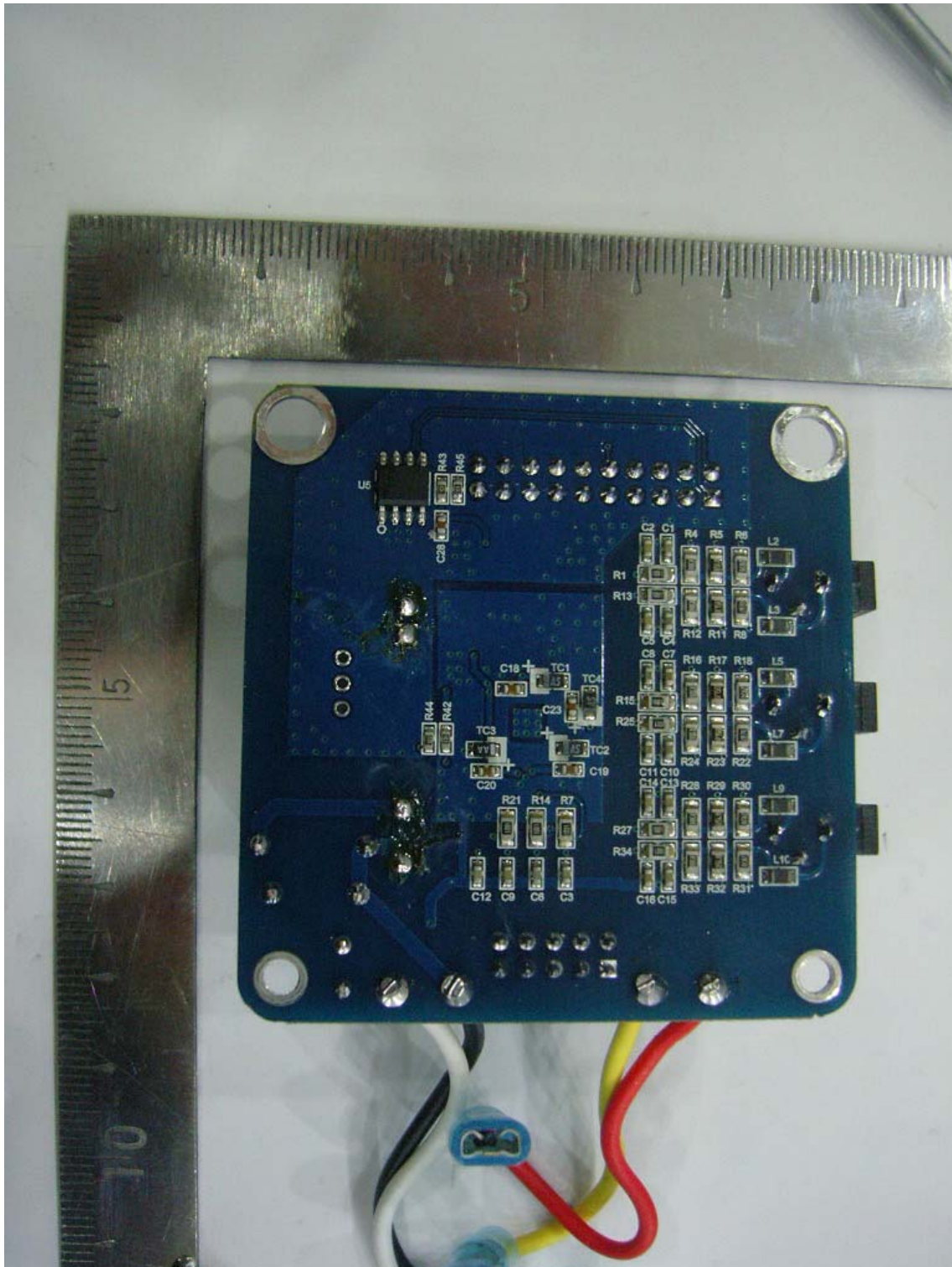




**View of SUB PCB(Top)**

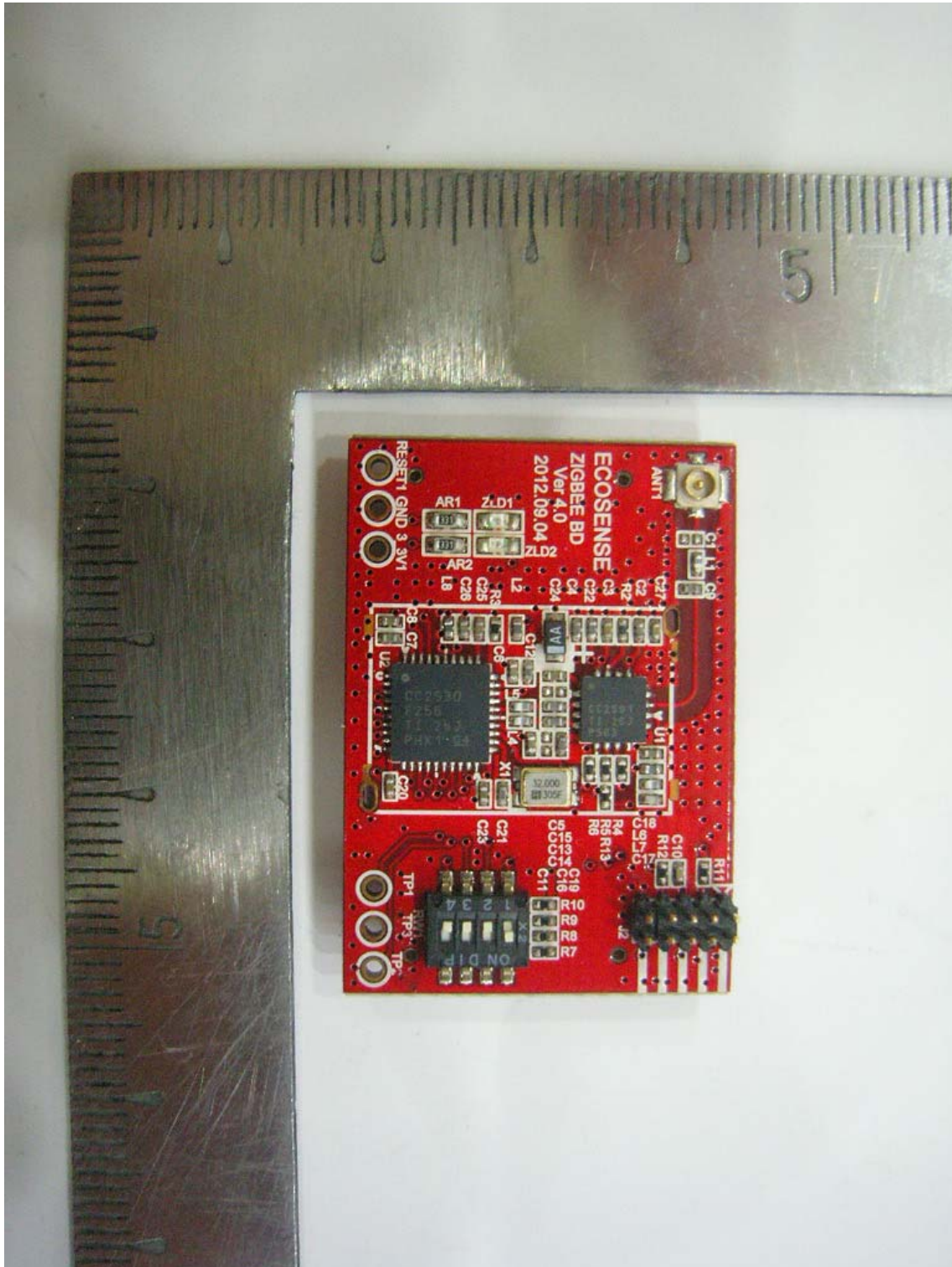


**View of SUB PCB(Bottom)**

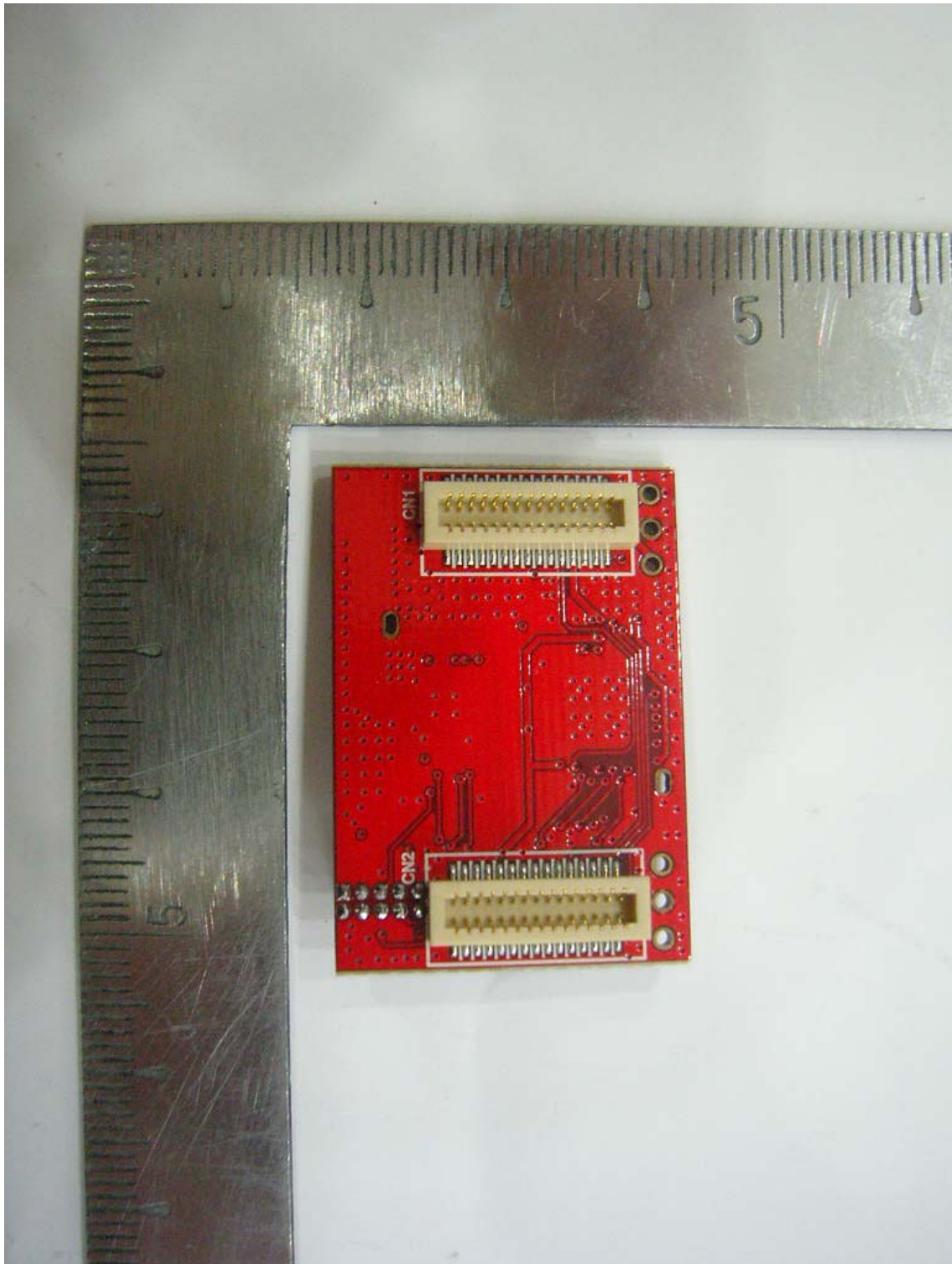




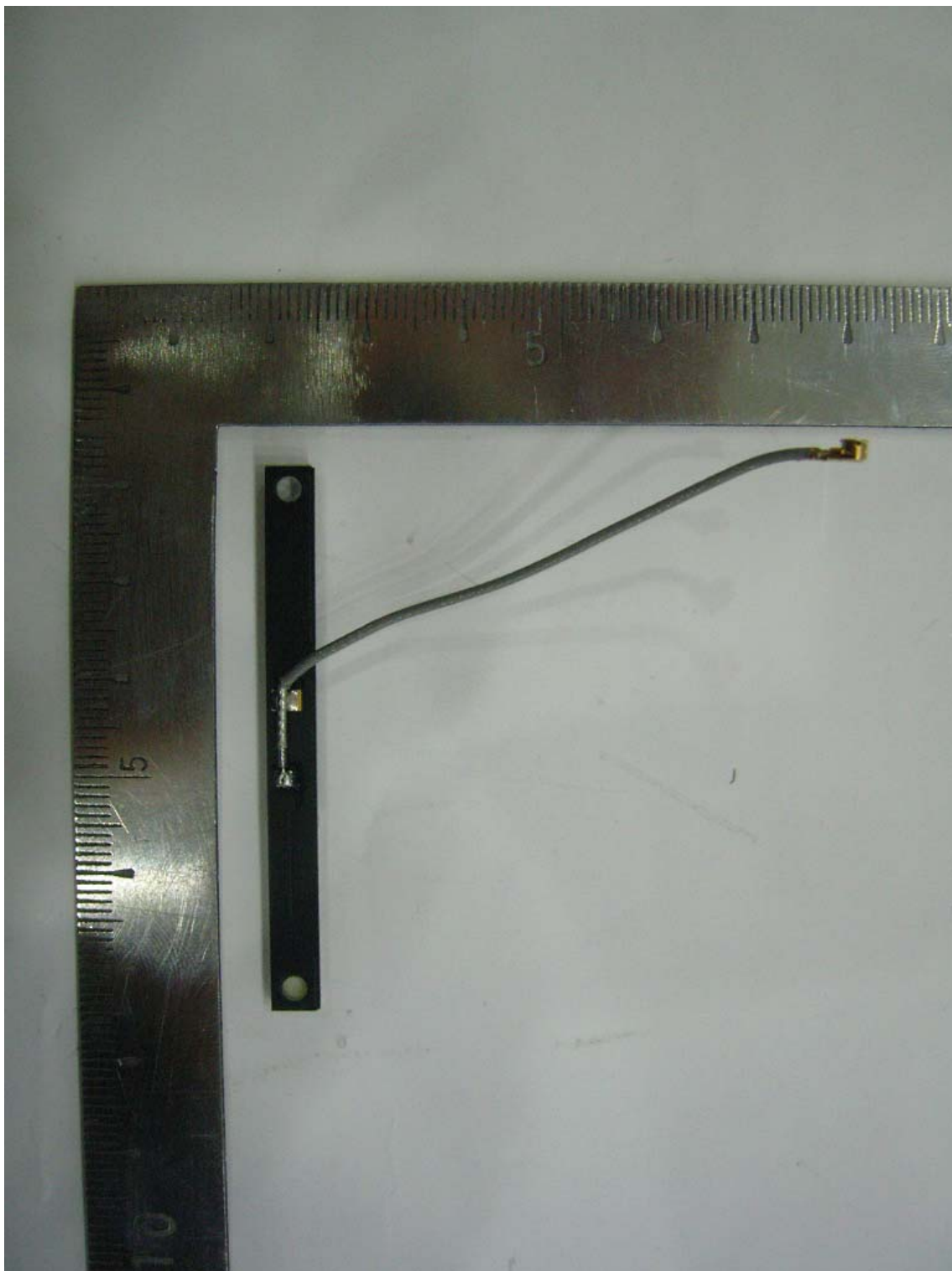
A photograph of a red printed circuit board (PCB) labeled "ECOSENSE ZIGBEE BD Ver 4.0". The board is populated with various electronic components, including a central microcontroller (labeled "CC2530"), several capacitors (C1 through C26), resistors (R1 through R10), and integrated circuits (U1, U2). It features a gold-plated SMA connector for an antenna (ANT1) and a multi-pin header (X1) for interfacing. The board is shown next to a wooden ruler for scale, indicating its compact size. The text "2012.09.04" is also visible on the board.



**View of RF MODULE PCB(Bottom)**



**View of ANTENNA PCB(Top)**





**View of ANTENNA PCB(Bottom)**

