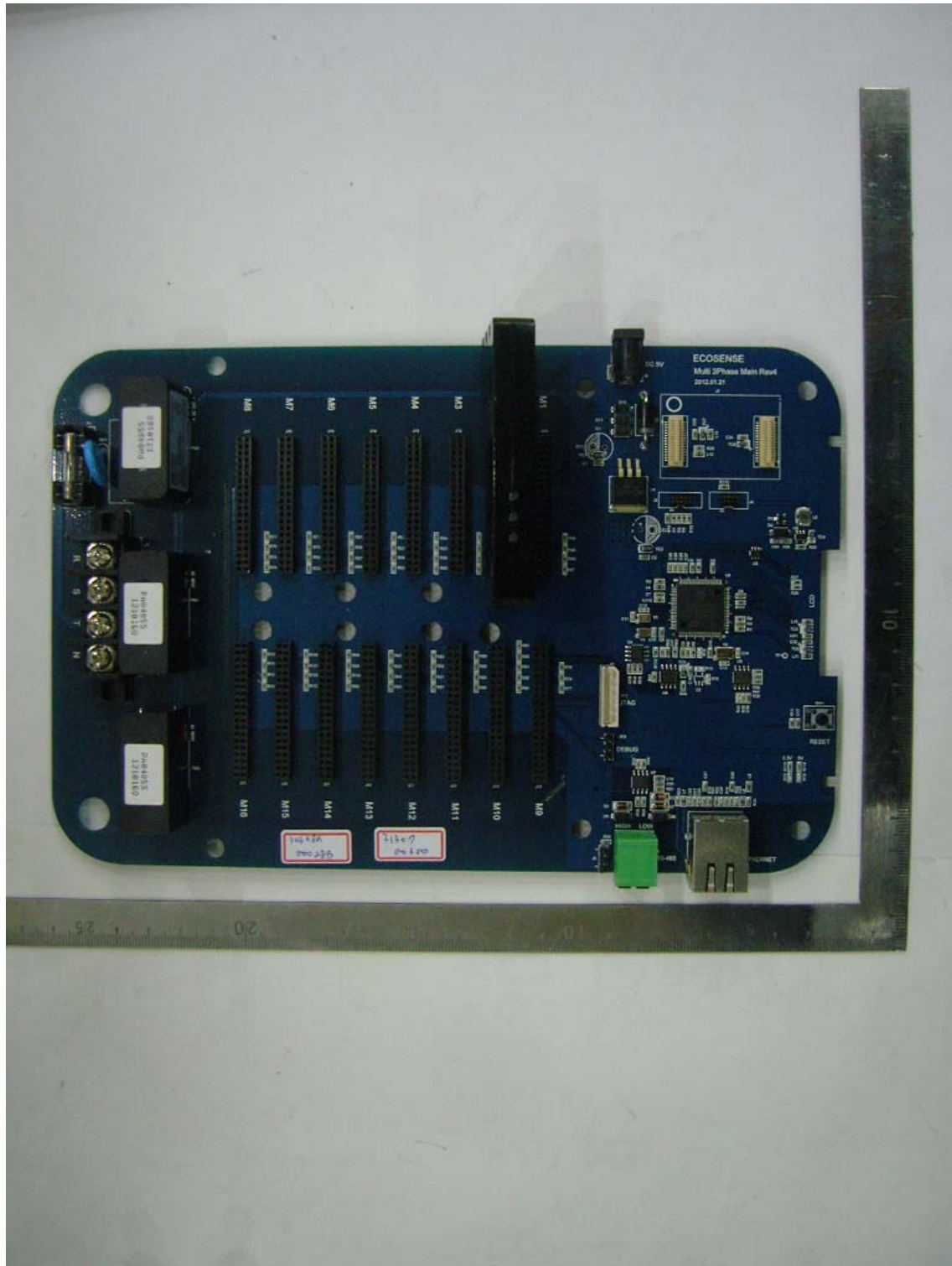


Interior view of EUT

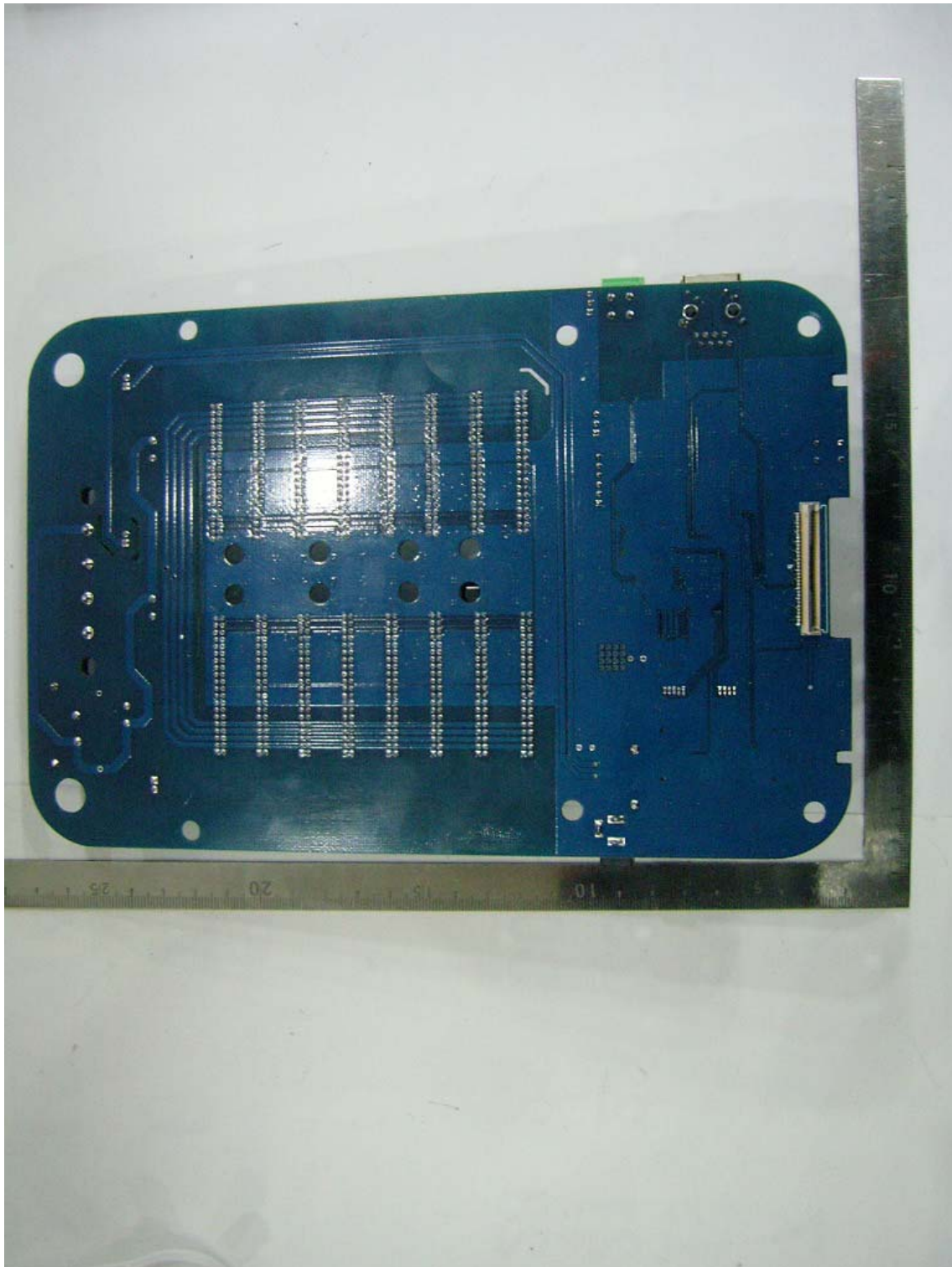
Internal Photos



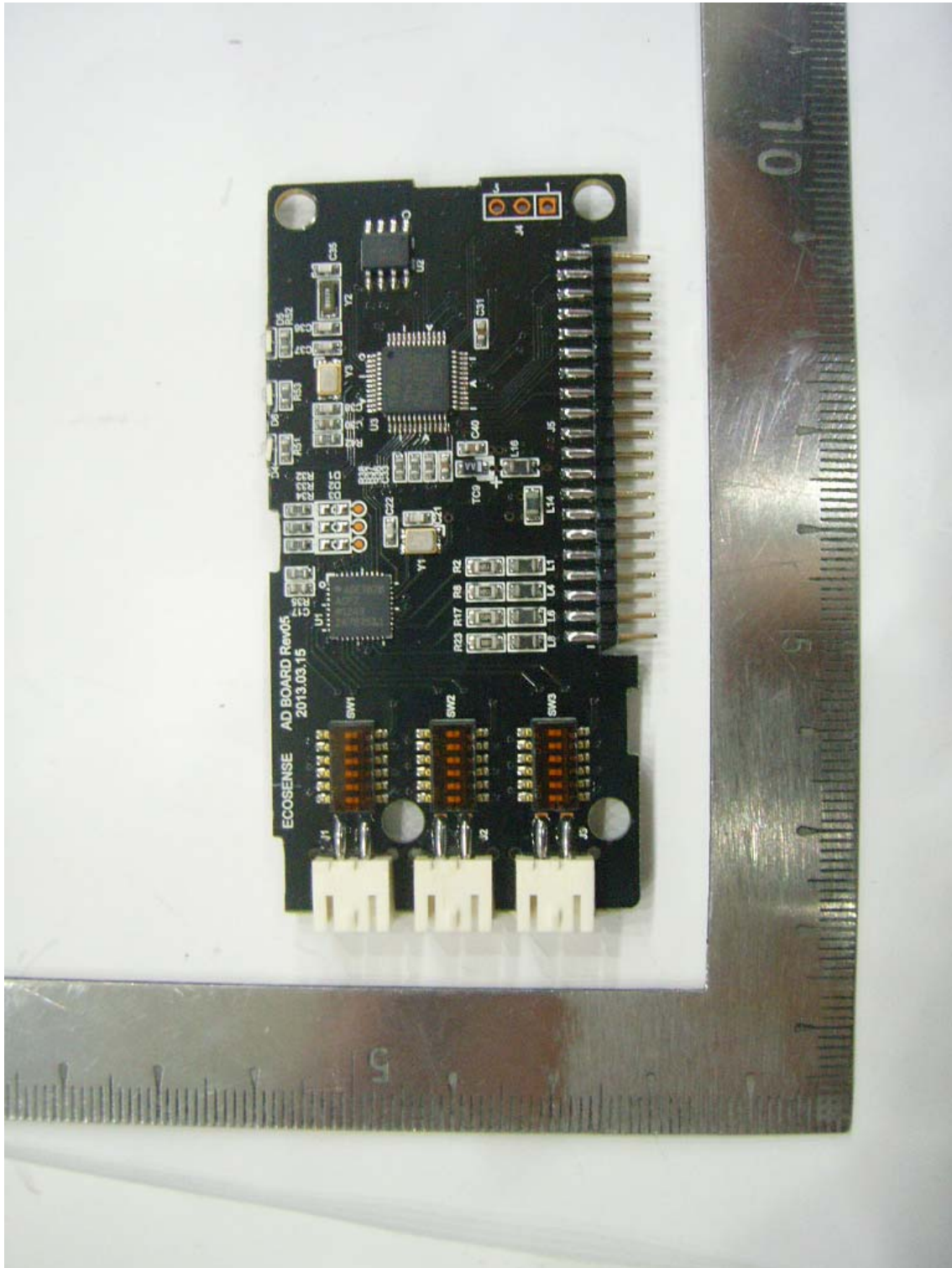
View of Main PCB(Top)



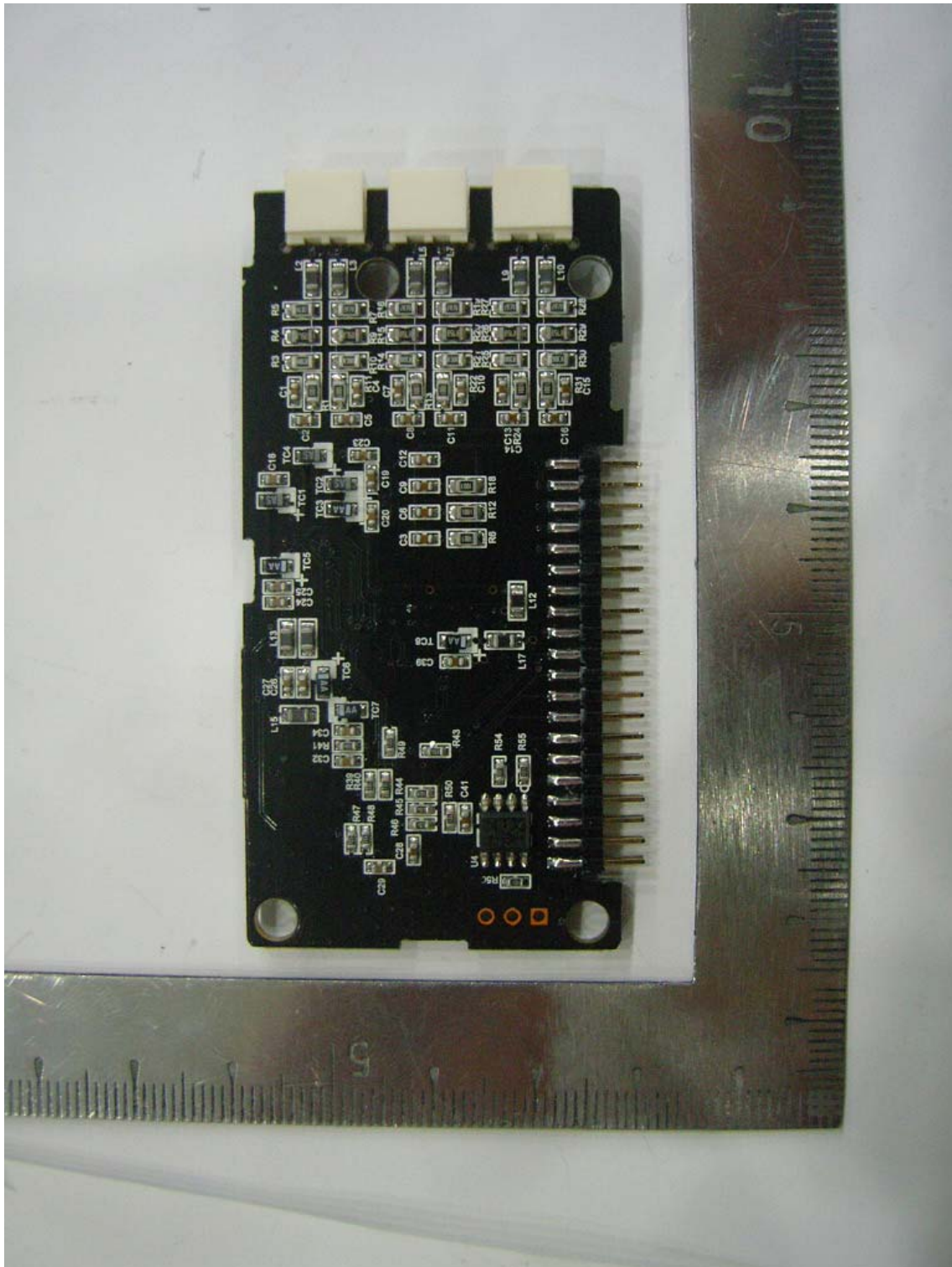
View of Main PCB(Bottom)



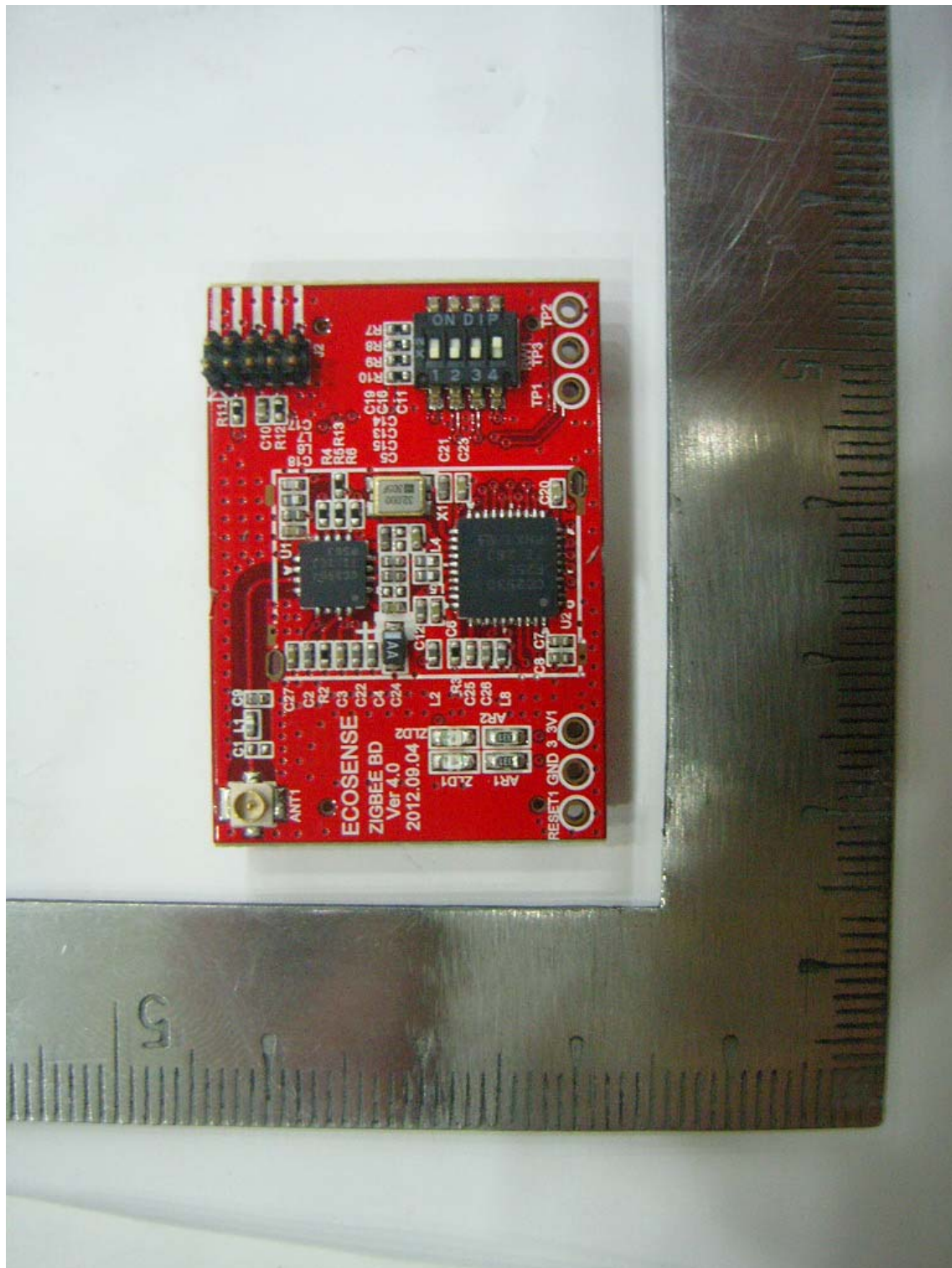
View of SUB PCB(Top)



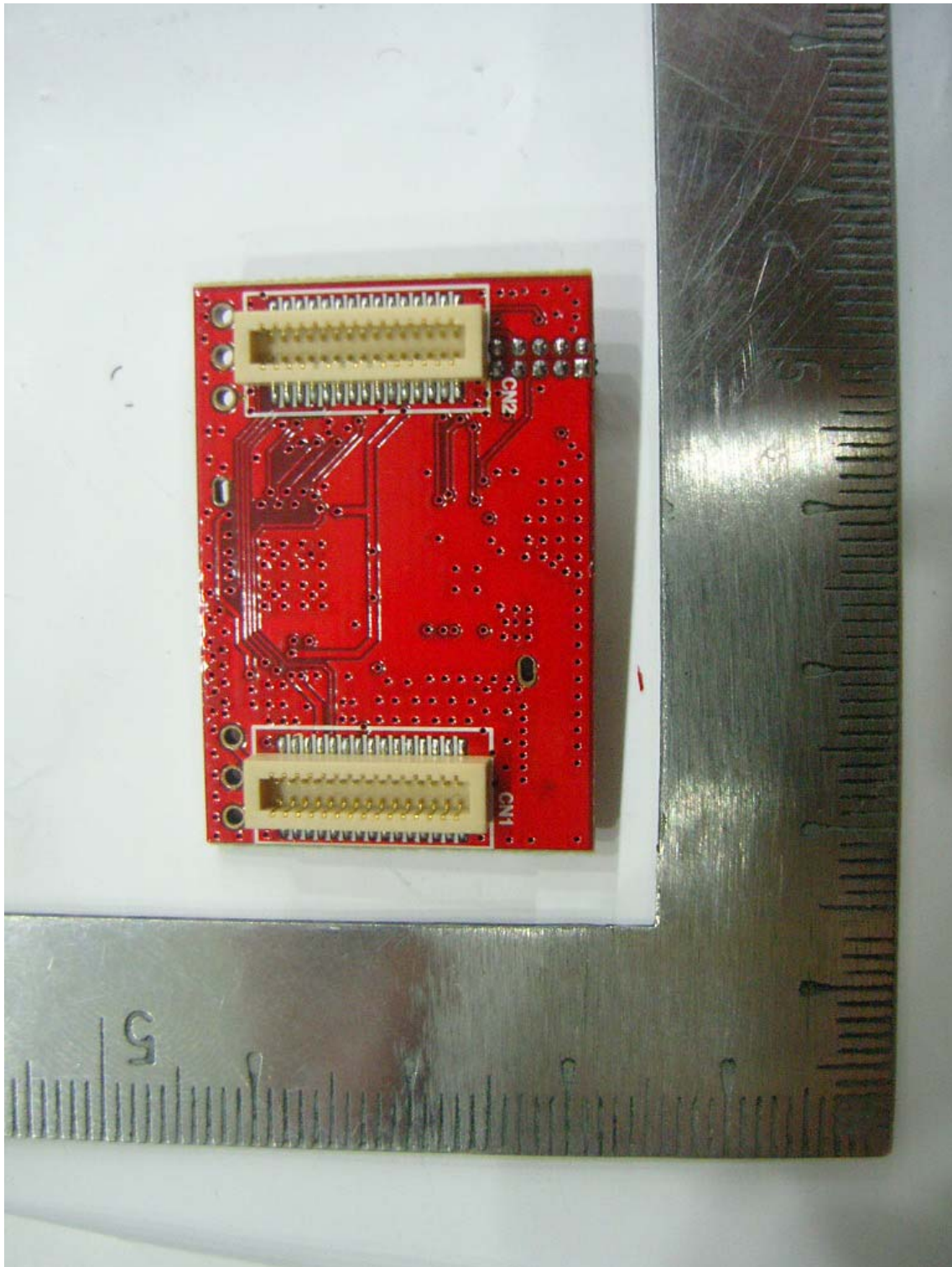
View of SUB PCB(Bottom)



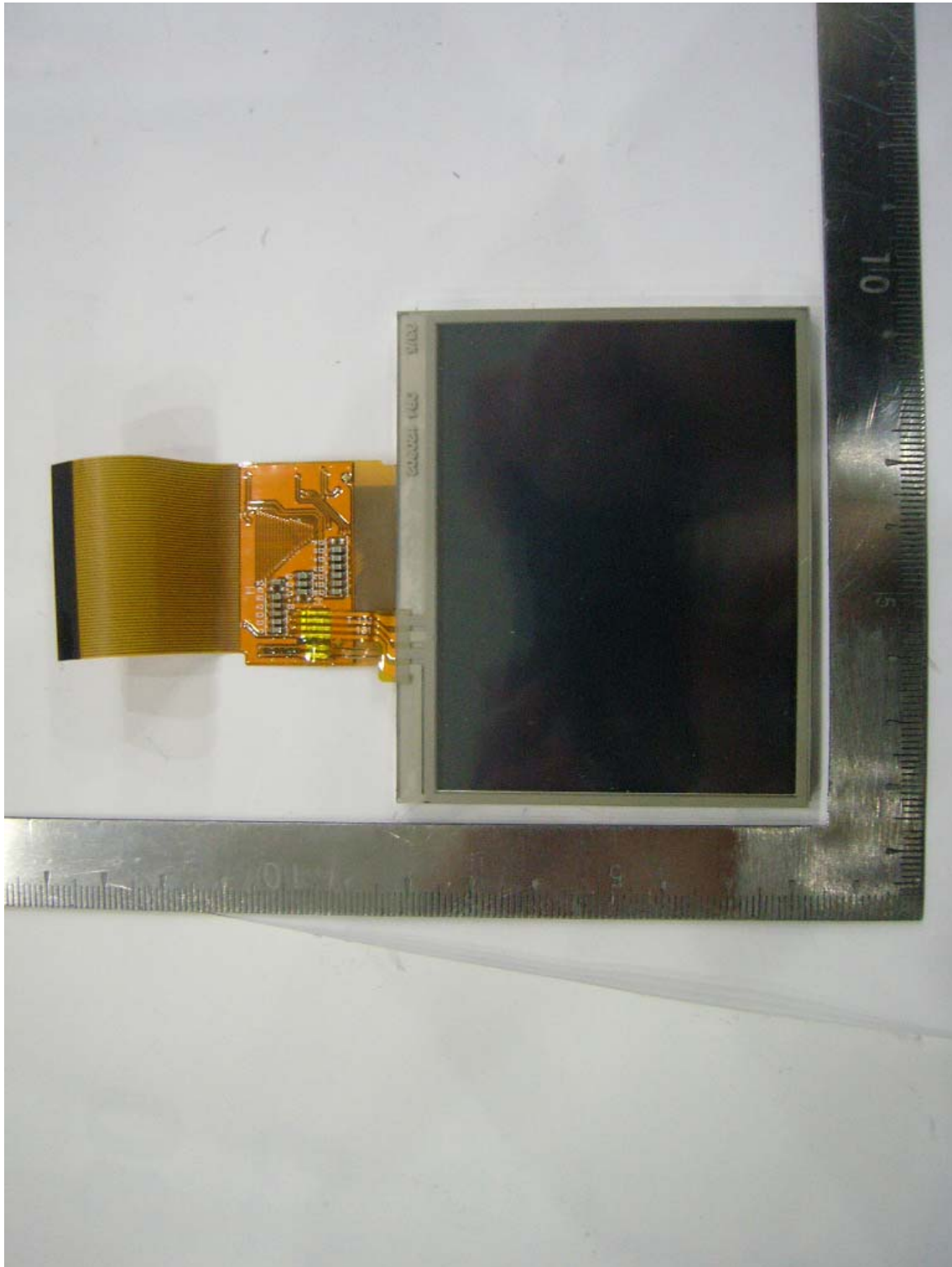
View of RF MODULE PCB(Top)



View of RF MODULE PCB(Bottom)



View of DISPLAY PCB(Top)



View of DISPLAY PCB(Bottom)



View of ANTENNA (Top)

