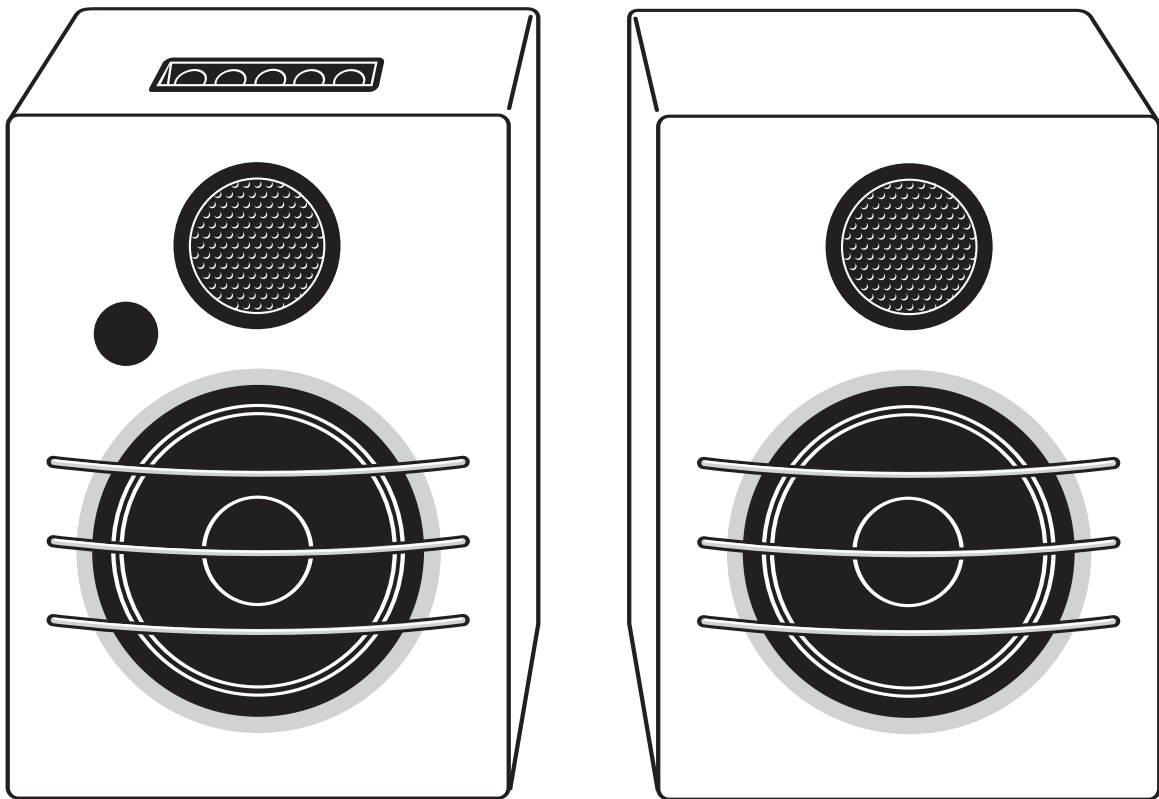




Owner's Manual



Model NX-DECO5
5" Two-Way
Wireless Loudspeaker

SAFETY INSTRUCTIONS

1. **Read Instructions** – Read all the safety and operation instructions before operating the NX-DECO5 (wireless loudspeaker).

2. **Retain Instructions** – Keep the safety and operating instructions for future reference.

3. **Heed Warnings** – Follow all warnings on the loudspeaker and in these operating instructions.

4. **Follow Instructions** – Follow all operating and other instructions.

5. **Water and Moisture** – Do not use the loudspeaker near water – for example, near a bathtub, washbowl, kitchen sink, laundry tub, in a wet basement or near a swimming pool.

6. **Heat** – Locate the loudspeaker away from heat sources such as radiators, or other devices that produce heat.

7. **Power Sources** – Connect the NX-DECO5 only to a power supply of the type described in these operation instructions or as marked on the loudspeaker.

8. **Power Cord Protection** – Route power supply cords so that they are not likely to be walked upon or pinched by items placed upon or against them, paying particular attention to cords at plugs, convenience receptacles, and the point where they exit the NX-DECO5.

9. **Object and Liquid Entry** – Do not drop objects or spill liquids into the inside of the loudspeaker.

10. **Damage Requiring Service** – The NX-DECO5 should be serviced only by qualified service personnel when:

A. NX-DECO5 power supply cord or the plug has been damaged; or

B. Objects have fallen, or liquid has spilled in the NX-DECO5; or

C. NX-DECO5 has been exposed to rain; or

D. NX-DECO5 does not appear to operate or exhibits a marked change in performance; or

E. The NX-DECO5 has been dropped, or its chassis damaged.

11. **Servicing** – Do not attempt to service the loudspeaker beyond those means described in this operating manual. All other servicing should be referred to the qualified service personnel.

12. To prevent electric shock, do not use the NX-DECO5 polarized plug with an extension cord, receptacle or other outlet unless the blades can be fully inserted to prevent blade exposure.

Pour prévenir les chocs électriques ne pas utiliser cette fiche polarisée avec un prolongateur, un prise de courant ou une autre sortie de courant, sauf si les lames peuvent être insérées à fond sans laisser aucune partie à découvert.

13. **Grounding or Polarization** – Do not defeat the grounding or polarization of the loudspeaker.

14. **Internal/External Voltage Selectors** – Internal or external line voltage selector switches, if any, should only be reset and re-equipped with a proper plug for alternate voltage by a qualified service technician.

15. **Cleaning** – Clean with a dry cloth only.

16. *Where the mains plug or an appliance coupler is used as the disconnect device, the disconnect device shall remain readily operable.*

This apparatus does not exceed the Class A/ Class B (whichever is applicable) limits for radio noise emissions from digital apparatus as set out in radio interference regulations of the Canadian Department of Communications.

ATTENTION – Le présent appareil numérique n'émet pas de bruits radioélectriques dépassant les limites applicables aux appareils numériques de class A/de class B (selon le cas) prescrites dans le règlement sur le brouillage radioélectrique édicté par les ministères des communications du Canada.

WARNING – To reduce the risk of fire or electric shock, do not expose this component to rain or moisture.

CAUTION:
TO REDUCE THE RISK OF ELECTRIC SHOCK, DO NOT REMOVE COVER (OR BACK). NO USER-SERVICEABLE PARTS INSIDE
REFER SERVICING TO QUALIFIED SERVICE PERSONNEL

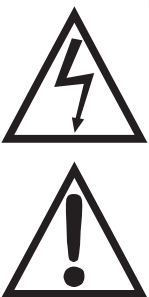


The lightning flash with arrowhead symbol within an equilateral triangle is intended to alert the user to the presence of uninsulated "dangerous voltage" within the product's enclosure, that may be of sufficient magnitude to constitute a risk of electric shock to persons.

Le symbole éclair avec point de flèche à l'intérieur d'un triangle équilatéral est utilisé pour alerter l'utilisateur de la présence à l'intérieur du coffret de "voltage dangereux" non isolé d'ampleur suffisante pour constituer un risque d'électrocution.

The exclamation point within an equilateral triangle is intended to alert the user of the presence of important operating and maintenance (servicing) instructions in the literature accompanying the appliance.

Le point d'exclamation à l'intérieur d'un triangle équilatéral est employé pour alerter les utilisateurs de la présence d'instructions importantes pour le fonctionnement et l'entretien (service) dans le livret d'instruction accompagnant l'appareil.



FCC STATEMENT

This device complies with Part 15 of the FCC Rules. Operation is subject to the following two conditions:

1. This device may not cause harmful interference, and

2. This device must accept any interference received, including interference that may cause undesired operation.

Note: This equipment has been tested and found to comply with the limits for a Class B digital device, pursuant to part 15 of the FCC Rules. These limits are designed to provide reasonable protection against harmful interference in a residential installation. This equipment generates, uses and can radiate radio frequency energy and, if not installed and used in accordance with the instructions, may cause harmful interference to radio communications. However, there is no guarantee that interference will not occur in a particular installation. If this equipment does cause harmful interference to radio or television reception, which can be determined by turning the equipment off and on, the user is encouraged to try to correct the interference by one or more of the following measures:

— Reorient or relocate the receiving antenna.

— Increase the separation between the equipment and receiver.

— Connect the equipment into an outlet on a circuit different from that to which the receiver is connected.

— Consult the dealer or an experienced radio/TV technician for help.

Caution: Any changes or modifications not expressly approved by the party responsible for compliance could void the user's authority to operate this equipment.

Industry Canada Statement:

This device complies with RSS-210 of the Industry Canada Rules. Operation is subject to the following two conditions: 1) this device may not cause interference and 2) this device must accept any interference, including interference that may cause undesired operation of the device.

This equipment should be installed and operated with a minimum distance of 20 cm between the radiator and your body.

Avis d'Industrie Canada:

Cet appareil est conforme à la norme CNR-210 des règlements d'Industrie Canada. Son fonctionnement est sujet aux deux conditions suivantes:

1) Cet appareil ne doit pas provoquer d'interférences et 2) Cet appareil doit accepter toutes les interférences, y compris celles pouvant entraîner son dysfonctionnement.

Cet équipement doit être installé et utilisé à une distance minimale de 20 cm entre le radiateur et votre corps.

INTRODUCTION

Congratulations on choosing NXG wireless loudspeakers. Like all NXG products, great care has been taken in their design. Their combination of advanced engineering and state-of-the-art materials will provide you with years of listening pleasure, while blending smoothly into your home's decor. Before you get started, it is a good idea to identify all the parts and hardware (See Fig. 1).

The NX-DECO5 uses a Bluetooth 4.0 chipset with an advanced audio codec that can achieve full hard-wired stereo audio quality using a wireless connection. Bluetooth connectivity allows you to enjoy streaming music from your smartphone, computer, or tablet while being free to move around.

The NX-DECO5 offers great flexibility in connection options. Not only does it offer excellent Bluetooth operation, it can be connected to most any device that has an audio output via its line level input jack and Toslink optical input. The DECO5 can enhance your TV sound with a simple line or optical connection.

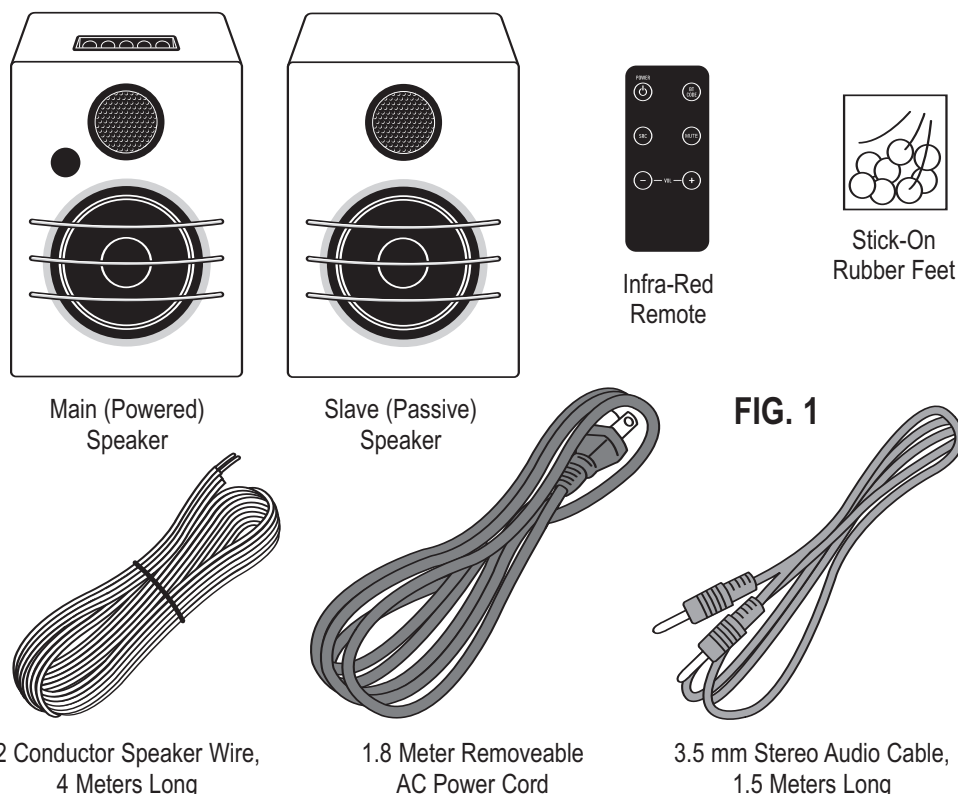
The additional feature of a subwoofer output is unique on the NX-DECO5. It allows the unit to be connected to any powered subwoofer to further enhance its performance with the addition of extended bass output for great sounding music or enhanced home theater sound.

UNPACKING

Remove the NX-DECO5 from its packing carefully and inspect it for any shipping damage. If you discover damage, contact your NXG dealer or installer immediately.

If possible, save the carton and internal packing. It's the best possible protection for your NX-DECO5 if you need to move it or return it for service.

Keep your sales receipt in a secure place. It helps establish the duration of your warranty and is good for insurance purposes (just in case anything happens to your stereo/home theater system).



SPEAKER & REMOTE FUNCTIONS (Figs. 2, 3, 4)

1) Tweeter

2) IR/Indicator Window. This window serves three purposes, one is for the hand-held remote to transmit IR (Infra-Red) signals to the speaker, second is to indicate power ON/STANDBY, and last to indicate which source is selected as follows:

Blue for Bluetooth operation

Green for 3.5 mm line level input

Red for Toslink optical input

Note: With power on the selected source color LED is bright, in standby mode the same color LED will be about 1/4 brightness.

3) Woofer

4) Power: Use this button to toggle the unit between ON and STANDBY.

5) BT Code: Use this button to pair the speaker system to your Bluetooth device when the speaker source is in the Bluetooth mode (Blue LED ON in the IR window, item 2 above, more about pairing later in Bluetooth Operation).

6) SRC: Use this button to select the audio source between Bluetooth wireless function, Line Input, and Optical Input.

7) Vol – Use this button to reduce the volume.

8) Vol + Use this button to increase the volume.

9) Tosline optical input allows connection to a device with PCM optical output.

10) SUB OUT allows connection to an out-board powered subwoofer.

11) 3.5 mm line input for an audio source.

12) 1/4" - 20 female threaded insert for mounting the NX-DECO5 to a wall bracket (sold separately).

13) Main (powered) speaker binding posts to connect the auxiliary (passive) speaker.

14) AC Power Connector

15) Auxiliary (passive) speaker binding posts for connection to the main (powered) speaker.

16) Power: Use this button to toggle the unit between ON and STANDBY.

17) BT Code: Use this button to pair the speaker system to your Bluetooth device when the speaker source is in the Bluetooth mode (Blue LED ON in the IR window, item 2 above, more about pairing later in Bluetooth Operation).

18) SRC: Use this button to select the audio source between Bluetooth wireless function, Line Input, and Optical Input.

19) Mute: Use this button to temporarily mute the volume.

20) Vol – Use this button to reduce the volume.

21) Vol + Use this button to increase the volume.

SPEAKER & REMOTE FUNCTIONS

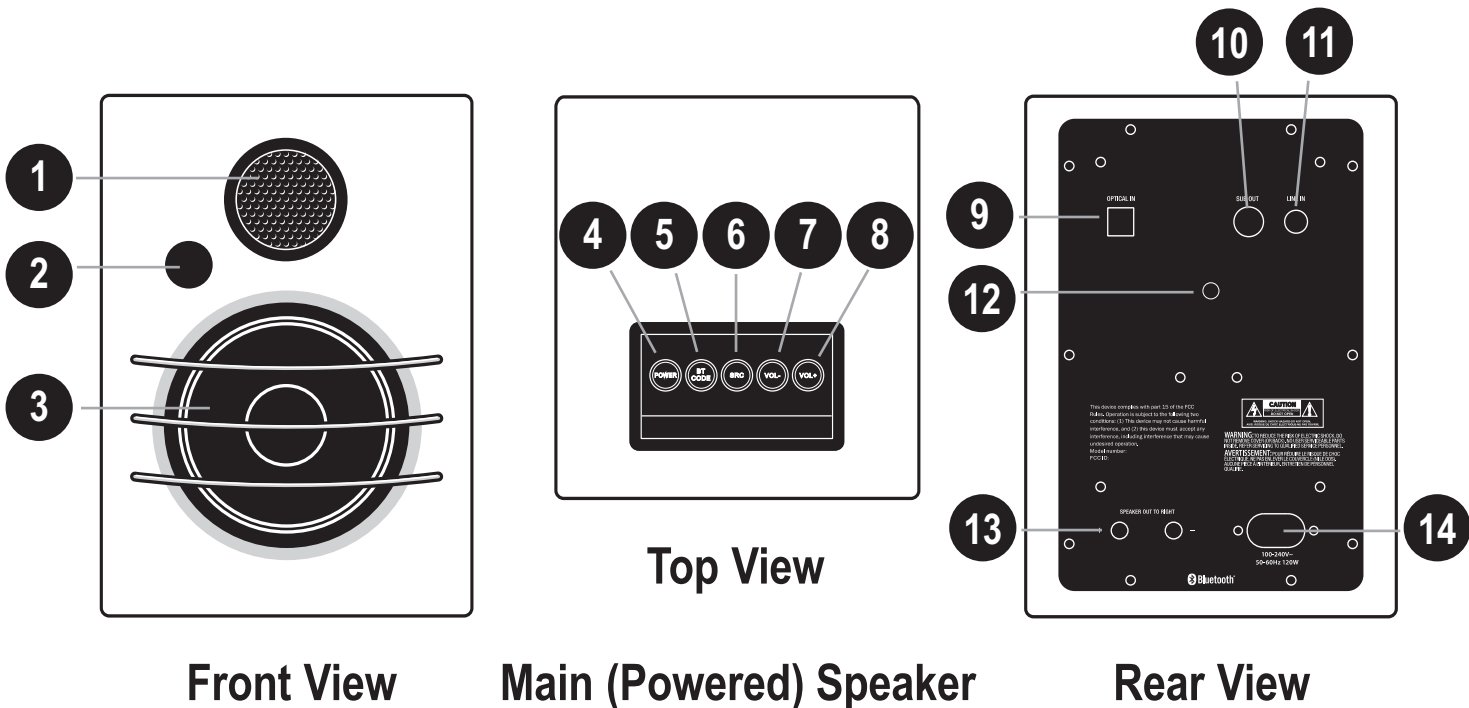


FIG. 2

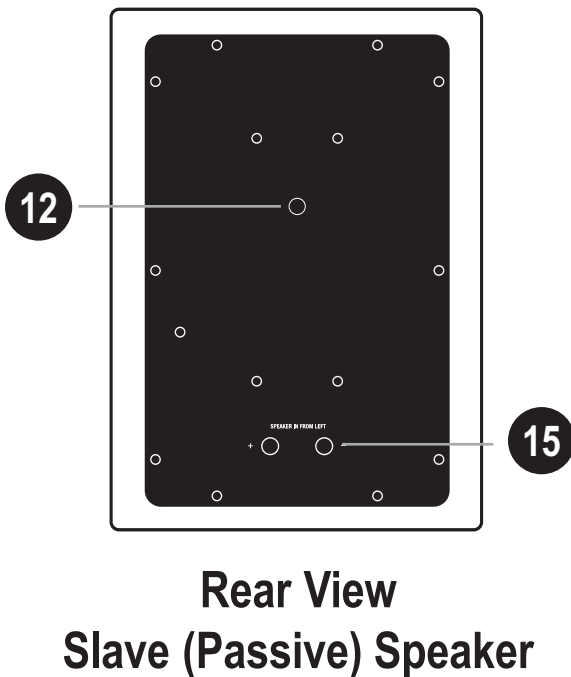


FIG. 3

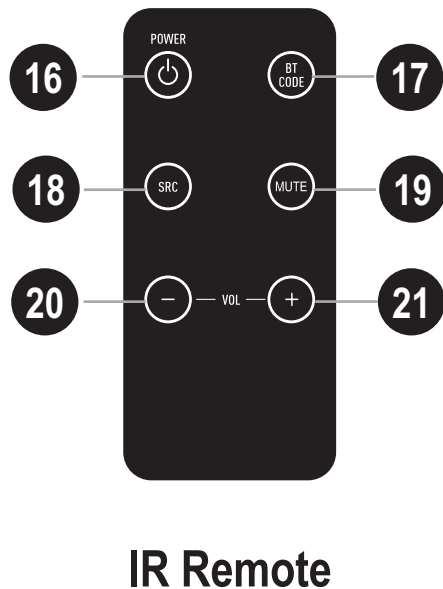


FIG. 4

POSITIONING YOUR NX-DECO5 SPEAKERS

The room that you choose to use as your primary listening room will add its on “sonic signature” to the sound of your music system. In selecting a room and speaker position, it is important to remember the effect of furnishings, materials, and surfaces, and how room dimensions affect your speakers’ performance. Experimentation in speaker placement is necessary to choose the best arrangement for your optimum musical experience.

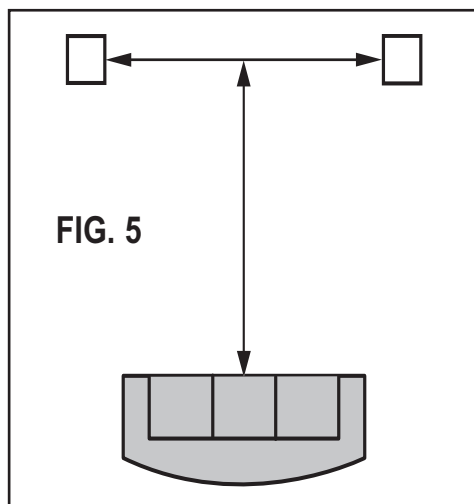
If you are setting the NX-DECO5 speakers on a table top, you can use the supplied self-adhesive rubber feet to eliminate vibration, buzzing or possible finish scratching.

If you want to mount the NX-DECO5 speakers to a wall you can use the $\frac{1}{4}$ " - 20 female inserts on the rear of each enclosure mated to an after-market wall bracket.

DISTANCE BETWEEN EACH SPEAKER

This part will require some experimentation and is somewhat dependent on the size of the listening area. However, as a general rule, the best results are usually attained when the speakers are from 6 to 12 feet apart. In larger rooms, greater distance between the speakers is possible but may require angling in of the speakers for the maximum stereo effect. Don't forget to choose a location close enough to an AC outlet to connect the main speaker.

The Optimum Listening Position



Note: The distance between yourself and the point directly between the speakers is slightly (roughly 20%) greater than the distance between the two speakers.

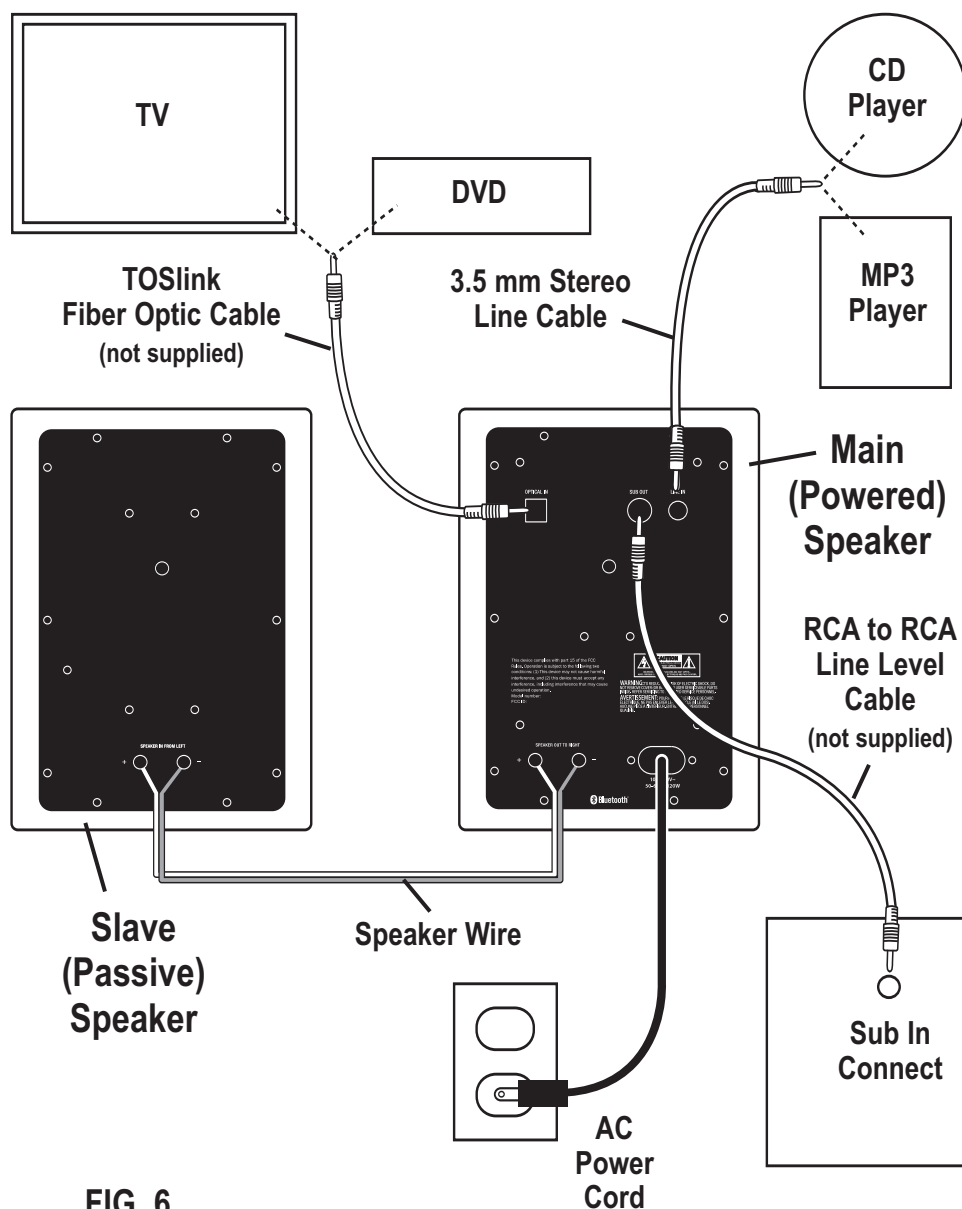


FIG. 6

SETUP AND CONNECTIONS (Fig. 6)

After you choose the location for your NX-DECO5 speakers you need to connect the master (powered) speaker to the slave (passive) speaker as shown using the 2-conductor 4 meter long speaker wire that was supplied with the system. Be certain to maintain proper polarity between the two units. Connect the copper color wire to the (+) connections of each speaker and the silver wire to the (-) connections to insure good bass and imaging performance. If you want to place the speakers farther apart than 4 meters, you can extend them up to 30 meters without sound degradation using your own 16 gauge 2-conductor stranded copper wire.

If you intend to use an audio source such as a MP3 player or CD player you can connect it to the line input using the supplied 3.5 mm to 3.5

mm stereo audio cable.

If you have a TV, DVD Player, or CD Player with TOSlink optical output, you can connect it to the NX-DECO5 using a TOSlink Fiber Optic cable (not supplied). Note, the NX-DECO5 is compatible with TOSlink PCM Audio streaming.

If you have a powered subwoofer you want to use, you can connect it to the NX-DECO5 main (powered) speaker Sub Out connector using an RCA to RCA cable (not supplied) as shown.

Once all input/output connections have been made and the two speakers are connected to each other connect the AC power cord to the master (powered) speaker AC power connector and a nearby AC outlet as shown.

BLUETOOTH OPERATION

1) Activate Bluetooth operation (Bluetooth ON) in your Smartphone, Computer, or Tablet and make certain the source is very close to the NX-DECO5 for best possible pairing success.

2) Turn the NX-DECO5 ON using either the Power button on top of the main (powered) speaker or the Power button on the IR remote (LED in the IR window will glow brightly when the NX-DECO5 is ON)

3) Set the NX-DECO5 source to Bluetooth Operation (blue LED on in the IR Window on the front of the powered speaker)

4) Press the "BT Pair" button on the top of the active speaker or on the IR remote control

5) The Blue LED in the IR window should be flashing rapidly at this point. The NX-DECO5 will search for a source for 3 minutes, if nothing is found it will revert to Standby status.

6) Select "NX-DECO5" in the list of Bluetooth devices that show up on your Smartphone, Computer, or Tablet

7) The LED in the IR window should now be a solid blue light that indicates you are connected.

Note: You only need to "pair" your Smartphone, Computer, or Tablet with the NX-DECO5 once, then anytime you use that device the NX-DECO5 will always be included in the list of Bluetooth devices. When you first turn on the NX-DECO5 it will search for Bluetooth sources it has already been paired with for 3 minutes. It will automatically connect to any Bluetooth source it has previously been paired with that is within approximately 10 meters. The NX-DECO5 can remember up to 6 paired sources.

At this point you can stream your music, or any audio you connect to via the Internet.

VOLUME SETTINGS

The NX-DECO5 stores the volume setting of each audio source, so as you change sources it will remember the last setting of that source, independent of the other two, and play the sound of the selected source at the same level as the last time you used it.

TROUBLESHOOTING

Before returning your NX-DECO5 for service, you can save time (and often embarrassment) by checking for a few problems that are most often encountered:

Power light not lit, No sound from either speaker:

- Is the power cord plugged in tight to both the NX-DECO5 and an active AC wall outlet?
- Is the correct source selected on the NX-DECO5 (See Introduction Item #2 on Page 3)?
- Is the connecting audio/optical cable tightly plugged in to both the source and NX-DECO5?
- Is the audio source ON and with it's volume turned UP
- Is the volume UP on the NX-DECO5?

No sound or weak sound from the slave (passive) speaker:

- Double check the 2-conductor speaker wire connections between the two speakers. Make sure the (exposed) bare wire is inserted into the screw type binding posts AND that the + to + and – to – polarity is correct.

TOSlink Optical input sounds like a clicking noise:

- Set the source output to PCM audio

Bluetooth Problems:

If you cannot get the source to pair to the NX-DECO5, go back through each step in the Bluetooth Operation section on Page 6.

Bluetooth operation has a limited wireless range of approximately 10 meters. This can vary greatly due to walls, floors, and other electrical fields from microwave ovens, wireless network routers, fluorescent lights etc. Also, the quality of sound can degrade (intermittent, fuzzy, etc.) as you move the source away from the NX-DECO5 speakers, if you move too far the connection will be broken.

SPECIFICATIONS

Design: Wireless, powered, 2-way, bass reflex (vented box), stereo loudspeaker system

Amplifier Power: 52 watts x 2 channels

Frequency Response: 45 Hz – 20 kHz

Inputs: Bluetooth 4.0 with advanced audio codec, 1-3.5 mm stereo, 1-TOSlink optical digital (PCM only)

Outputs: Sub Out (RCA)

Woofer: 5" poly-cone with rubber edge

Tweeter: 3/4" soft dome

Top Mounted Control Panel Functions: Power, Source, Bluetooth Pair, Volume UP and Volume DOWN

Enclosure Dimensions: 9 1/4" (235 mm) H x 6 1/2" (165 mm) W x 7 13/16" (198 mm) D (Note: 9 1/4" (235 mm) including protective woofer bars and rear speaker connectors)

Available Finishes: Matte White or Matte Black

Net Weights:

Main Powered Speaker: 7.6 Lb (3.5 Kg)
Slave Passive Speaker: 6.6 Lb (3 Kg)

Shipping Weight (pair pack with accessories): 17.2 Lb (7.8 Kg)

IR Remote Functions:

Power, Bluetooth Pair, Source, Mute, Volume UP and Volume DOWN

Dimensions: 3 3/8" (86 mm) Long x 1 5/8" (40 mm) Wide x 9/32" (7 mm) Thick

Weight: 19 grams (with battery)

Battery: CR 2025 3 volt Lithium

WARRANTY INFORMATION

NX-DECO5 Powered Speakers Limited Warranty

NX-DECO5 Powered Speakers Limited Warranty

If the NXG speaker system proves to be defective in workmanship or materials within two years from the date of the original customer's purchase, we will, at our option, repair or replace the defective product.

Limitation of Implied Warranties

Any implied warranties, including warranties of merchantability and fitness for a particular purpose, are limited in duration to the length of this warranty.

Exclusion of Certain Damages

NXG's liability for any defective product is limited to repair or replacement of the product at our option. NXG shall not be liable for incidental or consequential damages of any kind or character because of product defects. Some states do not allow limitations on how long an implied warranty lasts and/or do not allow the exclusion or limitation of incidental or consequential damages, so the above limitations and exclusions may not apply.

This Warranty Does Not Cover:

- Damage caused by abuse, accident, misuse, negligence, or improper operation.
- Any product whose serial number has been altered, defaced, or removed.
- Products that have been altered or modified.
- Normal wear and maintenance.
- Damages caused by shipping. (All claims for shipping damage must be made with the carrier.)

Warranty Service

Warranty service must be performed by an authorized service center, usually an NXG speaker systems dealer or its authorized agent. You may obtain a list of authorized service centers by contacting NXG. All warranty repairs must be accompanied by the original bill of sales. No other document is acceptable or is required. This warranty gives you specific legal rights, and you may also have other rights which vary from state to state.

NXG reserves the right to revise speaker system specifications without notice.



Scottsdale, AZ

email: nxgtechnology@gmail.com

web: nxgtechnology.com