

# User manual

## CarDvRD(BOSS800)



Thanks for purchasing our 3 in 1, all our wishes is drive your life with safety and enjoy your travel!

In order to use this device correctly and more efficiently, please follow up instruction rules in this manual for your installment and setting. Once you finished reading it, please kindly keep it handy for your any necessary reference.

**Dongguan Wanma Soaring Electronic Technology Co.,Ltd**

## **Standard Packages**

- 1 \* CarDvRD 3in1 Unit
- 1 \* 12V Car Charger
- 1 \* Bracket with tenon
- 1 \* USB cable for update
- 1 \* User manual
- 1 \* Color box

## **Main Features:**

1. GPS data points alerts of fixed speed cameras in advance for safety driving
2. Full band radar detection, each band can be turn on/off by selection
3. Overspeed alarm by GPS system
4. Radar identification system to avoid false alarm
5. Car driving recorder with HD 720P display
6. 120 degree Lens angle
7. Emergency documents protect button can save files when in emergency
8. 3D.G-sensor protection
9. Supports TF card, easy for data read and storage.
10. Start recording by being connected with car charger when the car starts
11. Automatically erase over the previous data by recycle when the disk is full.
12. Automatically GPS proofreading function.
13. MJPG storage format, show independent and complete real image
14. GPS logger can be displayed in the Google map by our specially provide tool ADR player.
15. GPS time adjusted automatically
16. Digital display for GPS, TFT for DVR display

## **Getting Started**

### **1. Power supply**

(1). Firstly, you need to insert the TF card in the socket and be sure it is welled fixed in the socket, then power on the device with the 12V car charge connecting with the car cigarette, the device will start automatically.

(2). Connected the CarDvRD 3in1 with the holder and fixed the device to windscreen as the follow picture, Please note that the radar receiver should be horizontally set.



## 2. Button setting of GPS-RD

On working condition, please set the followings by below steps.

### 1. Volume adjustment

Short press the Volume button “+/-”, the alert volume can be switched from 1-6 circulatory.

### 2. Radar Identification system

Generally, the automatic doors in banks and petrol stations will send a micro signal wave, which we call it **Interferential radar frequency(signal)**, the radar detector in CarDvRD may alarm it. To avoid the noisy alert from them, you can use the Radar Identification system.

**Add memory:** when meet with some false alerts in front of the automatic doors or petrol stations, you can press the button “1” to take a memory of the current interferential radar frequency(signal), you will hear a voice prompt “Add Interferential radar frequency, please press again”, within 3 seconds to confirm the setting by press button “1” again. You will hear “set successfully” if set successfully, and hear “set failed” if set failed.

**Delete memory:** When you come to the same automatic doors or petrol stations that you have ever add memory, press button “1” can delete the previous memory, you will hear a voice prompt “Delete Interferential radar frequency, please press again”, within 3 seconds to confirm the setting by pressing the button”1” again. You will hear “set successfully” if set successfully, and hear “set failed” if set failed.

This function is good for users to manually get rid of some common false alarms that happened with automatic doors.

### **3. Menu setting**

#### **Input Self-setting coordinates**

On working condition, short press button “M” once while you are driving arrived at the point of new cameras need to be added, you will hear voice prompt “Input self-setting coordinates”; then press the volume button “+/-” within 3 seconds to confirm the setting. The user points had been built successfully if you heard the voice prompt “setting successfully”, otherwise, you will hear “setting failed” which reminds of failure.

#### **GPS mode setting: LF/NLF**

On working condition, short press button “M” twice, and then press the volume button +/-, to change between LF and NLF mode.

LF: Safe driving mode that alerts both speed camera points and points of gas station, check points etc.

NLF: Speed camera detector mode that alerts only the speed camera points.

#### **Cruise over speed alert setting**

On working condition, short press button “M” for 3 times, you will hear the voice prompt “Cruise over speed alert setting”, then press the volume button “+/-” to choose the value from off(0), 30-160. The GPS will send alert of “you are speeding” when you drive over the preset speed value.

#### **Radar alert mute setting**

On working condition, short press button “M” for 4 times until you heard the voice prompt “radar alert mute setting” then press the volume button “+/-” to choose the value from 0 to 90, when meet with the Police radar, the GPS will not send radar voice alert if you are driving under this set speed, but the radar band will blink on the screen.

#### **Radar identification system**

On working condition, short press button “M” 5 times until you heard the voice prompt “Radar identification system”, then press button “+/-” to choose the value on/off. If you switch this function on, when meet the interferential radar signal already in the GPS memory, the GPS unit will only prompt by blink of the radar band lamp. there is no voice prompt; If take this function off, the GPS unit will send voice prompt together with the blink of the radar

band lamp when meet the Interferential radar signal in the GPS memory.

Note: This function can set on to make the GPS recognize the interferential radar frequency which takes noises, thus cut false alarms helpfully.

### **Continue alarms for over-speed**

On working condition, short press button “M” 6 times until you heard the voice prompt “Continue alarms”, then press the volume button “+/-” to choose the value on/off. When take the value on, then the GPS unit will send continue alarms when you are speeding, vice versa.

### **Radar alert mute for 3 minutes automatically setting**

On working condition, short press button “M” 7 times until you heard the voice “Radar alert mute for 3 minutes automatically”. Then you can press the volume button “+/-” to choose the value on/off. When take this on, the voice will lower when the radar detector keep alarm for more than 45 seconds; the voice will mute alarm for 3 minutes when the radar detector keep alarm for more than 90 seconds.

### **Delete all the Interferential radar frequency memory**

On working condition, please press button “M” 8 times until you heard the voice prompt “Delete all Interferential radar frequency”, then short press the volume button to confirm to delete all the Interferential radar frequency.

### **Delete all the self-setting coordinates**

On working condition, short press button “M” 9 times until you heard the voice prompt “Delete all self-setting coordinates”, then short press the volume button “+/-” to confirm delete all the self-setting coordinates.

### **Current speed display fine-adjustment**

On working condition, short press button “M” 10 times until you heard the voice prompt “current speed display fine-adjustment”, then press the volume button to add or minus 5 km/h for the current speed display.

## **Time Zone selection**

On working condition, short press button “M” 11 times until you heard the voice prompt “Time zone selection”, then press the volume button to choose the right time zone for the GPS system.

## **Factory default setting**

On working condition, short press button “M” 12 times, you can return to the factory default setting.

Note: The GPS device shall exit menu setting mode automatically if you make no action in 5 seconds, every setting value shall be saved upon your confirmation.

## **Button setting of DVR**

1. **Menu** button: short press this button can enter into the menu setting of car driving recorder.
2. **OK mode** button: short press this button can enter into the current menu you are setting/ confirm and save your current value selection.
3. **UP/Down** button: short press this button can skip from up to the end of all menus/options
4. **REC** button: short press this button you can start the current recording fast
5. **LOCK** button: short press this button, you can make the current record files compulsory saved and never be over write unless you delete it manually.

## **In Recording Mode**

Short press menu button, it will stop recording and enter into the menu setting interface.

Short press mode button, it will stop recording and enter into the replay mode interface.

Short press the UP Down button can turn on/off the screen display of DVR.

Short press the Lock button can lock the current videos not be over write for protection.

Short press the Lock button can power off the DVR (on condition that powered on by the battery)

## In Preview Mode

Short press the REC button can exit the preview mode and start to record.

Short press the MENU button can enter into the menu setting.

Short press the OK mode button can start replay the videos.

Short press the UP down button can go to the last and next video.

Short press the Lock button can unlock the current video.

Note: During the data and time setting, press the UP down button to add or minus the No., press the OK mode button to confirm your current setting value, the setting order is year/month/day/hour/minute/second. After finished the setting of the seconds, short press OK mode button can save the value.

## Display instruction

The priority of screen display

Menu display

Radar frequency display

Distance counting down display

Current speed display

Current time display

## Prompt lamp display



M: remind of whether the dangerous points and point of service alert opened or not by ON/OFF light, (if you do not have these types of points, the lamp can be on always.)

R: remind of whether the Radar identification system opened or not by on/off

X: remind of x band radar signal

KU: remind of Ku band radar signal

L: remind of Laser band signal

K: remind of K band radar signal

KA: remind of ka band radar signal

P: remind of the frequency that did not be recognized from the radar system.

☆: remind the GPS unit and the radar detector connected successfully

Note: the red light prompt lamp on the bottom screen shall automatically off after 10 seconds without any operation on the GPS system. This special setting is made to avoid its interference to the eyes while driving on the road.

They can be turned on by pressing any buttons.

## Troubleshooting

Problems	Fast Solutions
No power supply	<ol style="list-style-type: none"> <li>1. check power</li> <li>2. check fuse</li> <li>3. check car charger</li> </ol>
Continues abnormal alarm	<ol style="list-style-type: none"> <li>1. restart</li> <li>2. check signal in car</li> <li>3. check device broken</li> </ol>
No voice alarm but has display alarm	<ol style="list-style-type: none"> <li>1. check radar alert mute setting</li> <li>2. check volume setting</li> <li>3. restart to check again</li> </ol>
Can not show idle screen	<ol style="list-style-type: none"> <li>1. check fuse of socket broken or not</li> <li>2. check charge corrosion</li> <li>3. restart to check</li> </ol>
GPS get positioned slowly	<ol style="list-style-type: none"> <li>1. go out of forest and tall buildings</li> <li>2. it is normal taking 5 minutes posited in the 1st time</li> <li>3. go out of tunnel and basement</li> </ol>
No alarm of new data points	<ol style="list-style-type: none"> <li>1. download the newest database</li> <li>2. report the new points to local distributors</li> </ol>
GPS system crash	<ol style="list-style-type: none"> <li>1. take record of the place where device died</li> <li>2. restart the GPS</li> <li>3. report to the local distributors</li> </ol>
No card	Insert the TF card at least 4 GB size
Card error	Read error in TF card, please change the card
Card size too small	Size of the TF card is less than 4GB,change it
Card not formatted	Format the TF card for enable to record
Card size changed	TF card is too old to use, please change it
Sensors fail	Sensor initialization abnormal, if it continues, please return for repairing
Protect slot full	The capacity for lock protection is full, unlock some files by AP tool.

If all above solutions not helpful, please contact with the local distributor to repair.



## GPS + Radar Detector Specification

Power supply		DC 12V
Current range		150-300Ma
Work temperature		-25-85 C°
Save temperature		-40-90 C°
Radar band	Frequency Range	Sensitivity
X band	10.42-10.62 GHz	-120+/-2db
K band	23.9-24.3 GHz	-130+/-2db
Ka band	34.1-35.82 GHz	-130+/-2db

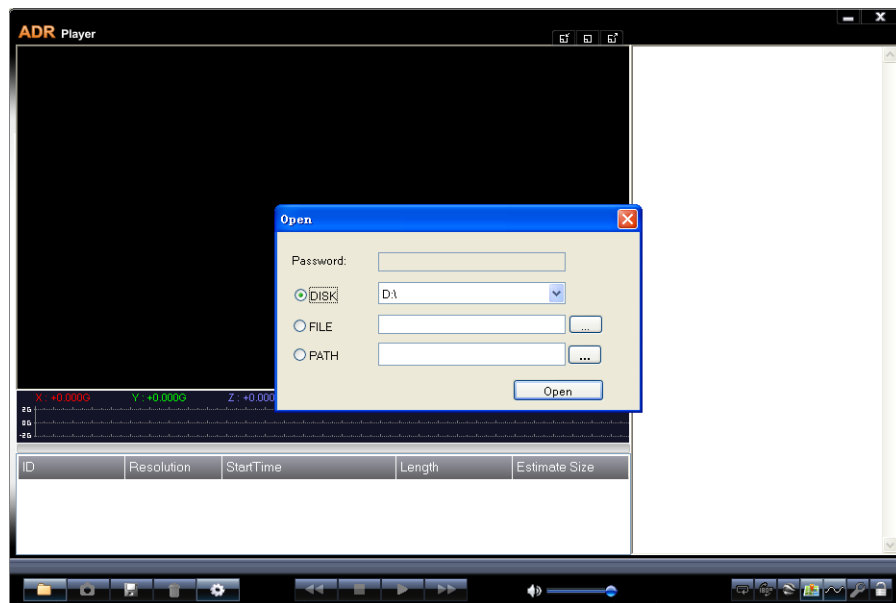
## DVR Specification

<b>CPU</b>	<b>SQ680S</b>
<b>Memory capacity</b>	SDHC class 6 4GB-32GB, need use the special ADR player.
<b>Battery capacity</b>	110 m Ah
<b>Screen Rotation</b>	<b>270 degree</b>
<b>LCD</b>	TFT2.0, 960*240 high resolution
<b>Specs of video</b>	
<b>Camera pixels</b>	1.3 million pixel 1/4" cmos sensor
<b>EFL</b>	2.5 mm
<b>Aperture value</b>	2.5
<b>Camera angle lens</b>	120 degree
<b>Video format</b>	AVI
<b>Storage frame rate</b>	30fps
<b>Image pixels</b>	1280*720
<b>Segment size</b>	128M
<b>Playback</b>	Can replay the video saved from G-sensors in the Google map by AP tool
<b>Others</b>	
<b>MIC</b>	Can be turn on/off by the menu
<b>Delay record time</b>	Continue record 10s after DC power be cut
<b>MIC sensitivity</b>	-58+2db
<b>G-sensor</b>	Support

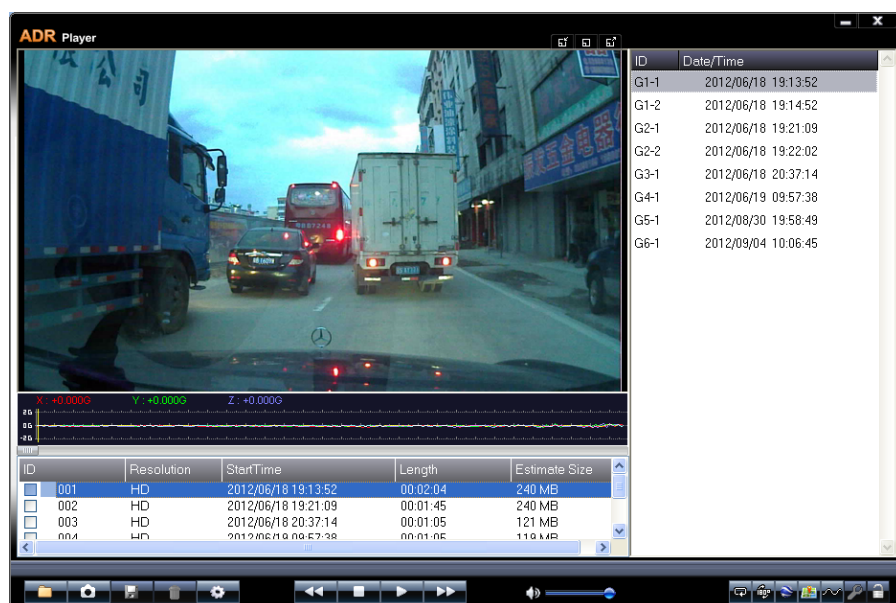
## APP Tool Instruction

The TF card once being formatted by the CarDvRD 3in1 device, it can automatically generate a ADR player in the SD card, please operate as below steps to review the video.

1. Open the ADR player and enter into below interface by clicking the button corner bottom at the Left side. Choose the memory TF path and then press “open” button.





















2. The ADR Player will show all the videos record by the DVR, you can see the below information in the interface.



You can review the videos according chronological order, the group name is set automatically by the system and in each group, there maybe several segments, each segments is 128 MB(except the one that manually stopped.)

The groups with yellow color is the ones that saved by lock button, which can not be overwrite when the TF card is full, you can delete them by unlocking by manually operation in the CarDvRD 3in1 device or in the PC.

### 3. Button instructions

	Import file		Volume setting
	Save files		Repeat paly
	Backup video group		Rotate 180 dgrees
	Delete video		Open the google map(B)
	Tool case(A)		G-Sensors (C)
	Go to front files		Video inpainting (D)
	Pause		Unlock
	Play		KML: Exprot videos
	Go to next files		Window size preview selection

#### (A)Tool case instruction

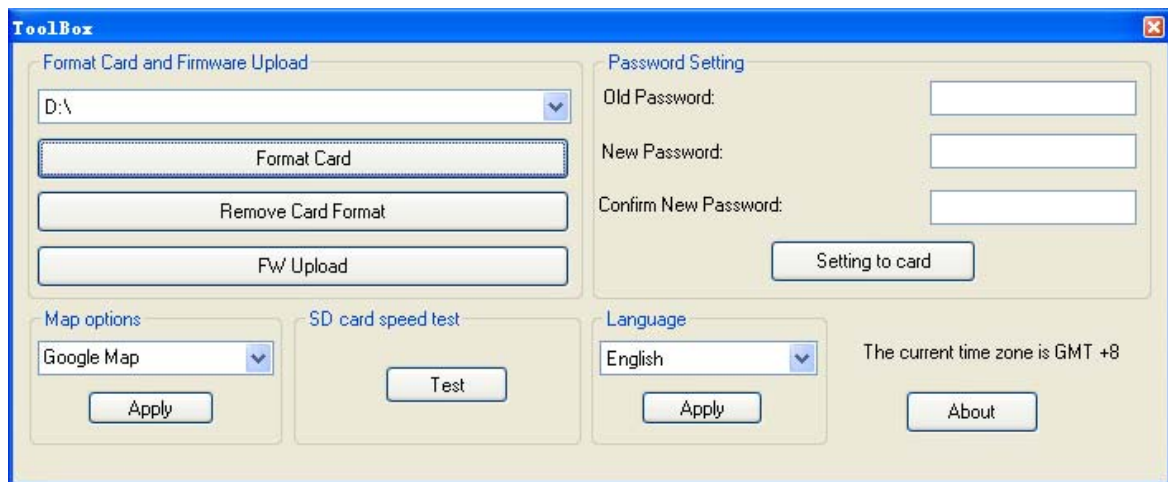
1. Before start to recording, you have to format the TF card into the special format through the CarDvRD device. After format, the TF card is read as 119M from the computer. The rest capacity was hidden as the recording format.

**Note:** You will need take out the TF card from CarDvRD and use a car reader in order to read it from the Computer. The USB connection is for GPS cameras database update ONLY.

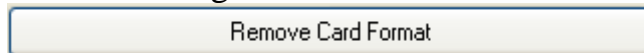
Press the “setting” button at the bottom line of the main interface.



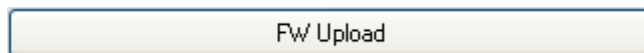
You can see below Toolbox for setting parameters.



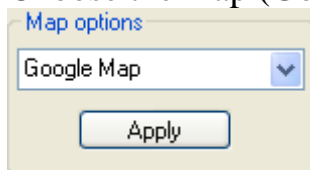
2. Delete the original format of the TF card.



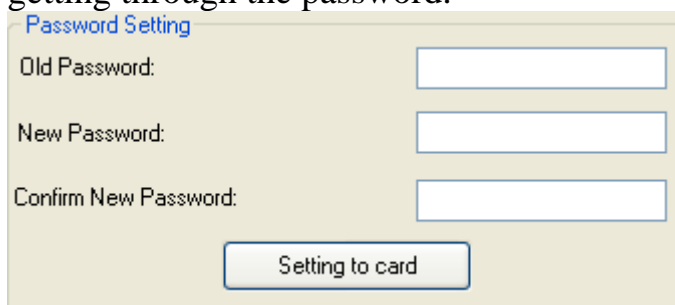
3. Upload the ADR player to the TF card



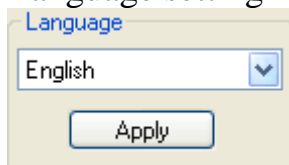
4. Choose the map (Google map or Chinese map)



5. Setting the password, once being set, all files can not be opened without getting through the password.



6. Language setting



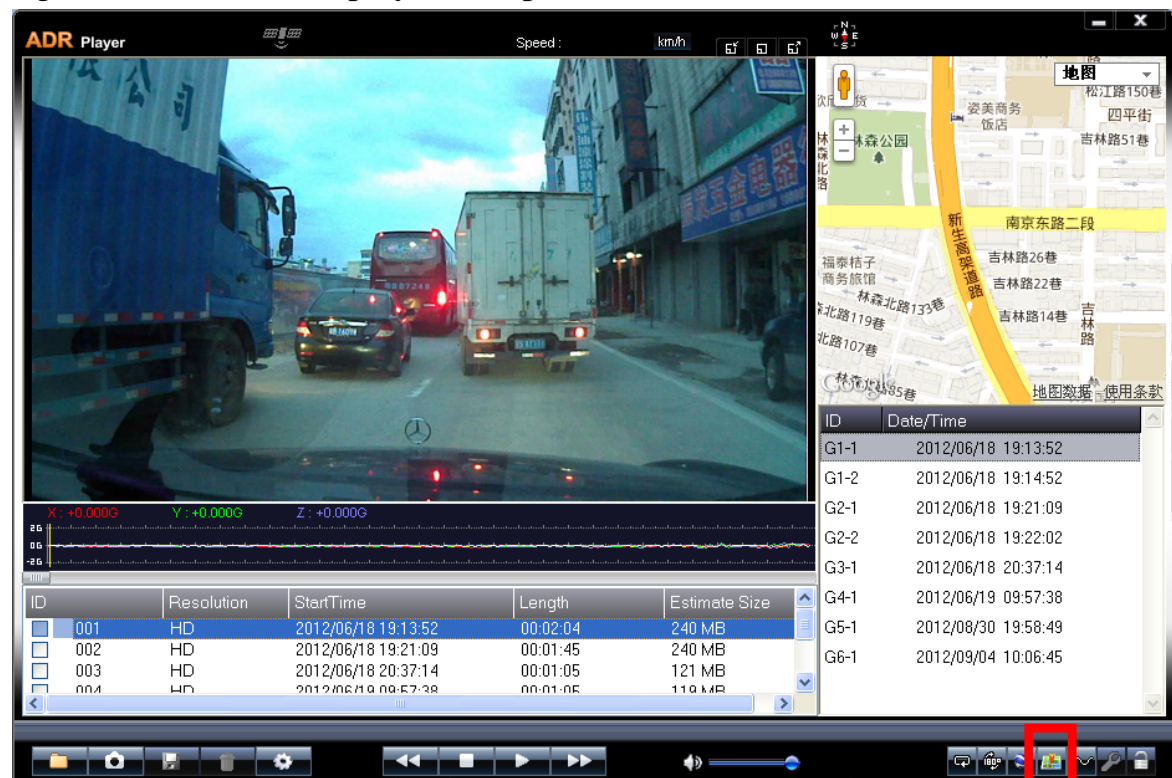
7. Current Time Zone notification

The current time zone is GMT +8

About

## (B) About the GPS track display on the map

The record will remember the information from the GPS module every 1 second, When the GPS is well positioned, the record files can save the information of latitude, longitude, date, time and speed for the files, you can see this information when you connect the files to the Google map by the ADR player, you will have to press the button marked with red square at the right side corner to display the map.



## (C) G-sensor protection instruction.

X: Movement between left and right

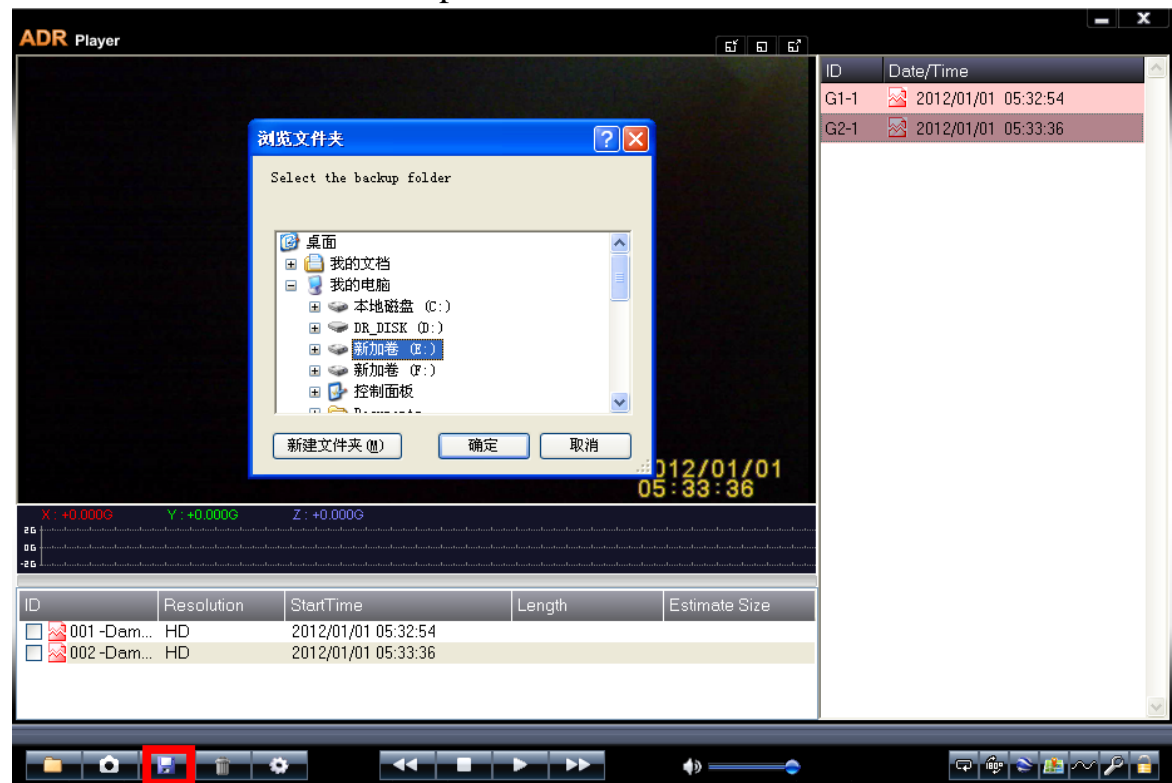
Y: Movement between front and back

Z: Movement between up and down

The files can automatically be saved and locked for protection if there is big movement estimated by the G-sensor.

## (D) Save videos from the ADR Player

Press the save button as below marked with red square, you can save the videos to the disc in the computer.

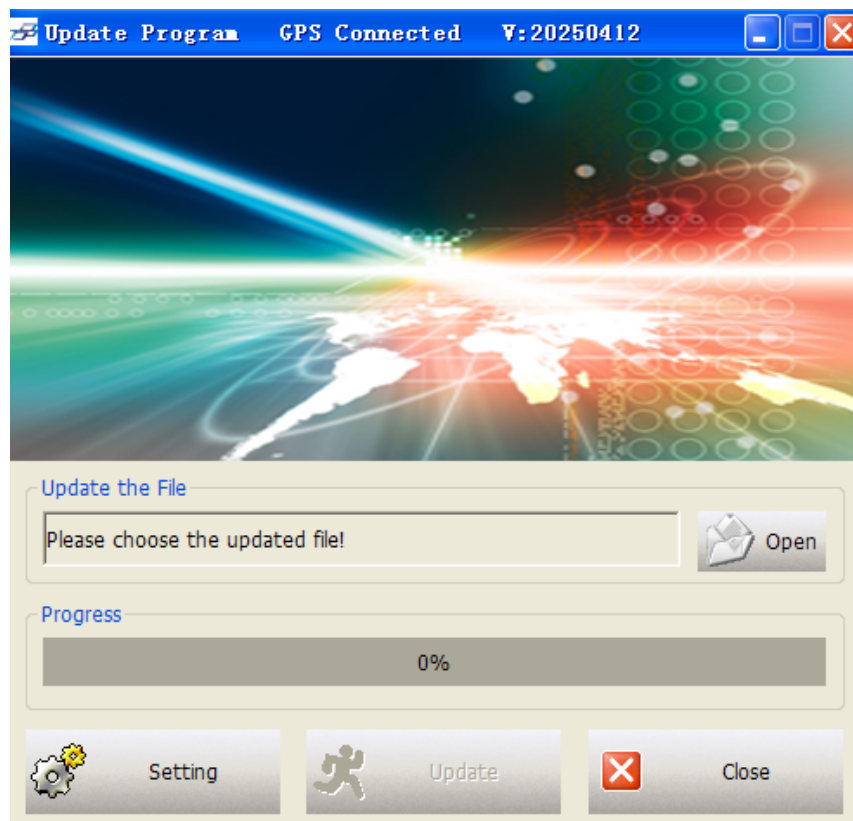


## About the GPS cameras database update

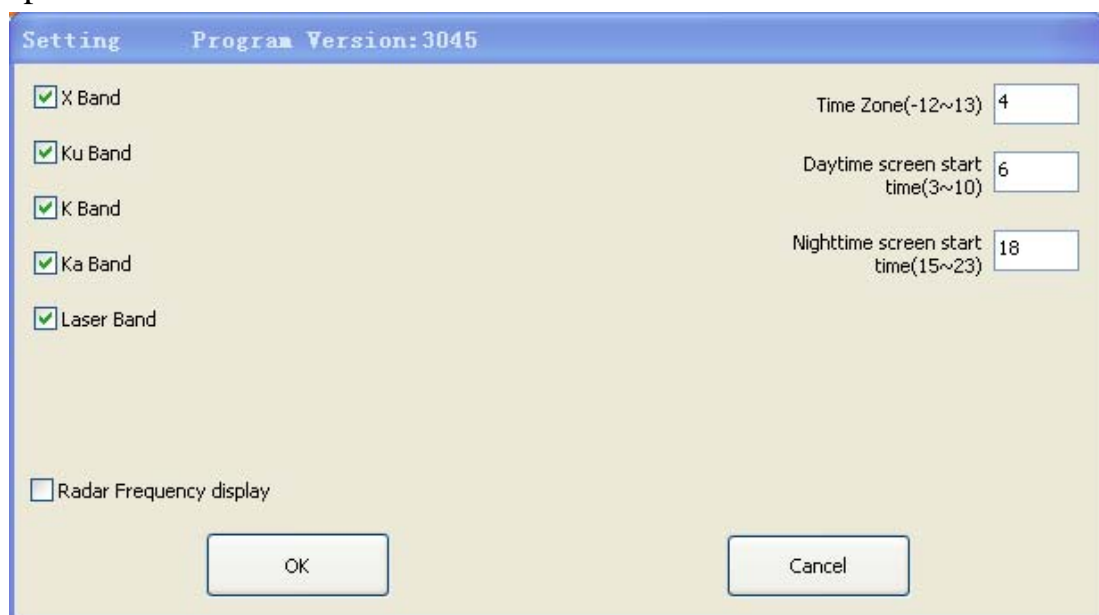
To update the database, you must go to the website of the producer or the local distributors.

And then please followed up with the below steps to update the database

1. Download the "GPS update tool" and update database files from the link on the website to the computer.
2. Open the "GPS update tool" and connect the CarDvRD to the computer by USB cable, you will find the below interface. It shows "GPS connected" follow with the current database version at the top of the interface.



3. Click “open” button to choose the update database file and press “Update” button to update the database.
4. You can also click “Setting” to enter into the configuration of some parameters as below.



#### About the warranty

All of our products will be warranty for 12 months from date of the delivery.

**FCC Warning:**

This equipment has been tested and found to comply with the limits for a Class B digital device, pursuant to part 15 of the FCC Rules. These limits are designed to provide reasonable protection against harmful interference in a residential installation. This equipment generates, uses and can radiate radio frequency energy and, if not installed and used in accordance with the instructions, may cause harmful interference to radio communications. However, there is no guarantee that interference will not occur in a particular installation. If this equipment does cause harmful interference to radio or television reception, which can be determined by turning the equipment off and on, the user is encouraged to try to correct the interference by one or more of the following measures:

- Reorient or relocate the receiving antenna.
- Increase the separation between the equipment and receiver.
- Connect the equipment into an outlet on a circuit different from that to which the receiver is connected.
- Consult the dealer or an experienced radio/TV technician for help.

Caution: Any changes or modifications to this device not explicitly approved by manufacturer could void your authority to operate this equipment.

This device complies with part 15 of the FCC Rules. Operation is subject to the following two conditions: (1) This device may not cause harmful interference, and (2) this device must accept any interference received, including interference that may cause undesired operation.