

SaniCheck User Manual

Sanicheck Setup Instructions For FCC Testing

The two test units were shipped with the power cable disconnected. This cable must be reconnected BEFORE any testing is performed.

1. Remove the right plastic cover by sliding it downward as shown in the next two photos.



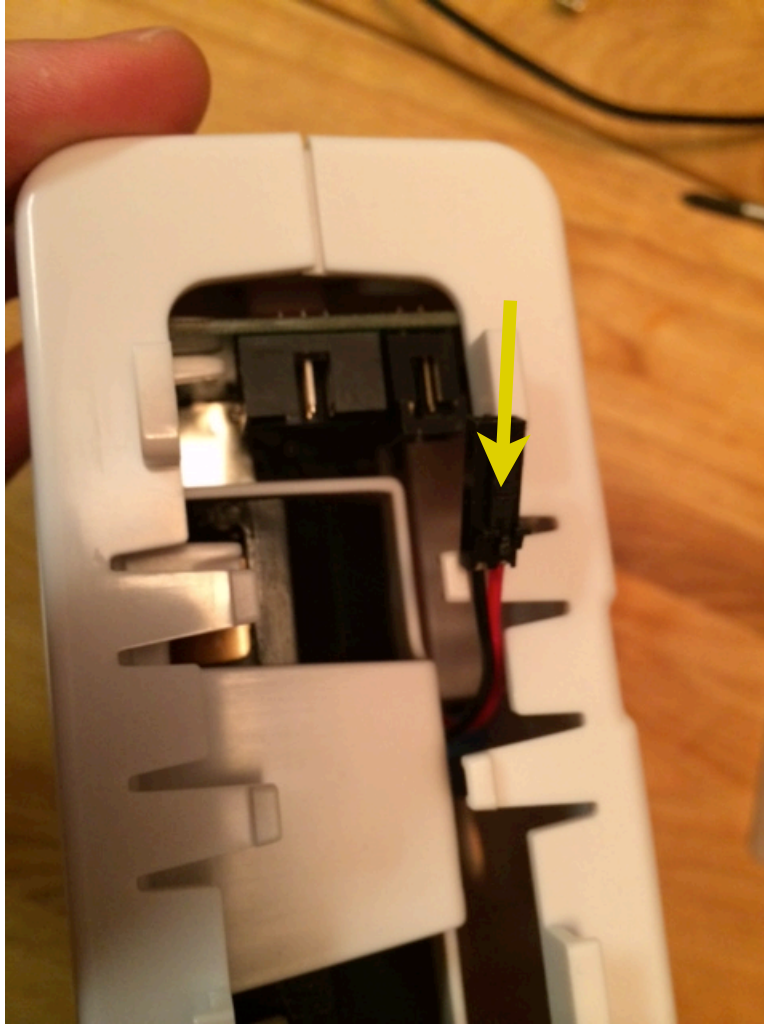
This device complies with part 15 of the FCC Rules. Operation is subject to the following two conditions: (1) This device may not cause harmful interference, and (2) this device must accept any interference received, including interference that may cause undesired operation.

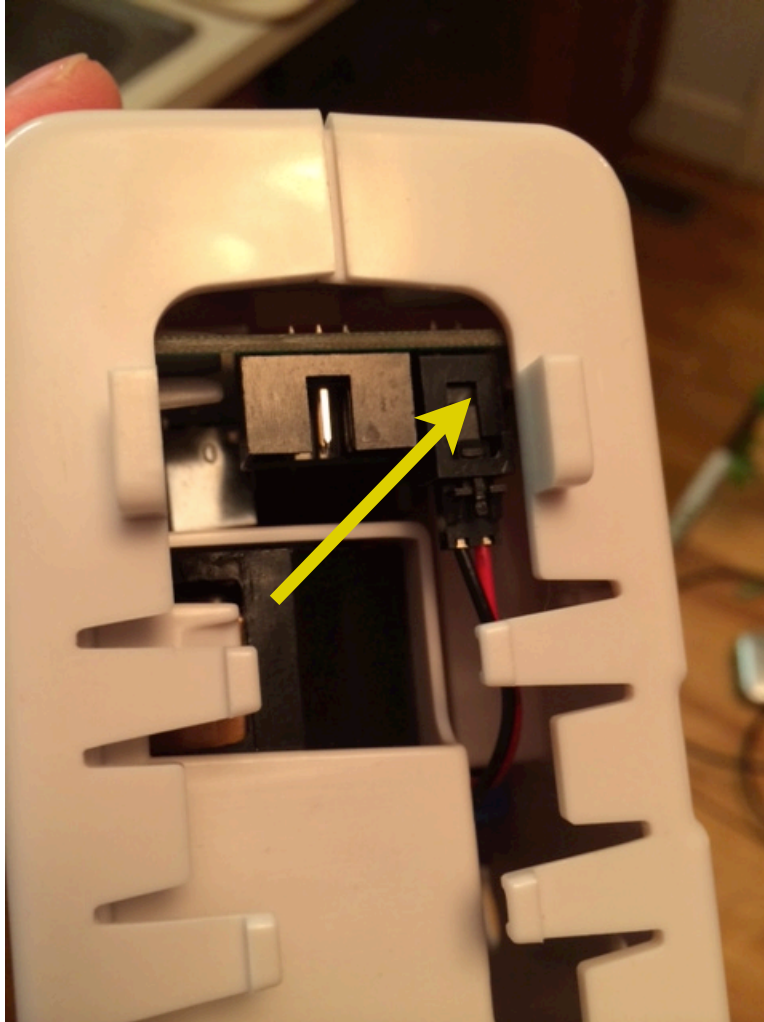
Changes or modifications not expressly approved by the party responsible for compliance could void the user's authority to operate the equipment.

This equipment complies with the FCC RF radiation exposure limits set forth for an uncontrolled environment. This equipment should be installed and operated with a minimum distance of 20 centimeters between the radiator and your body.

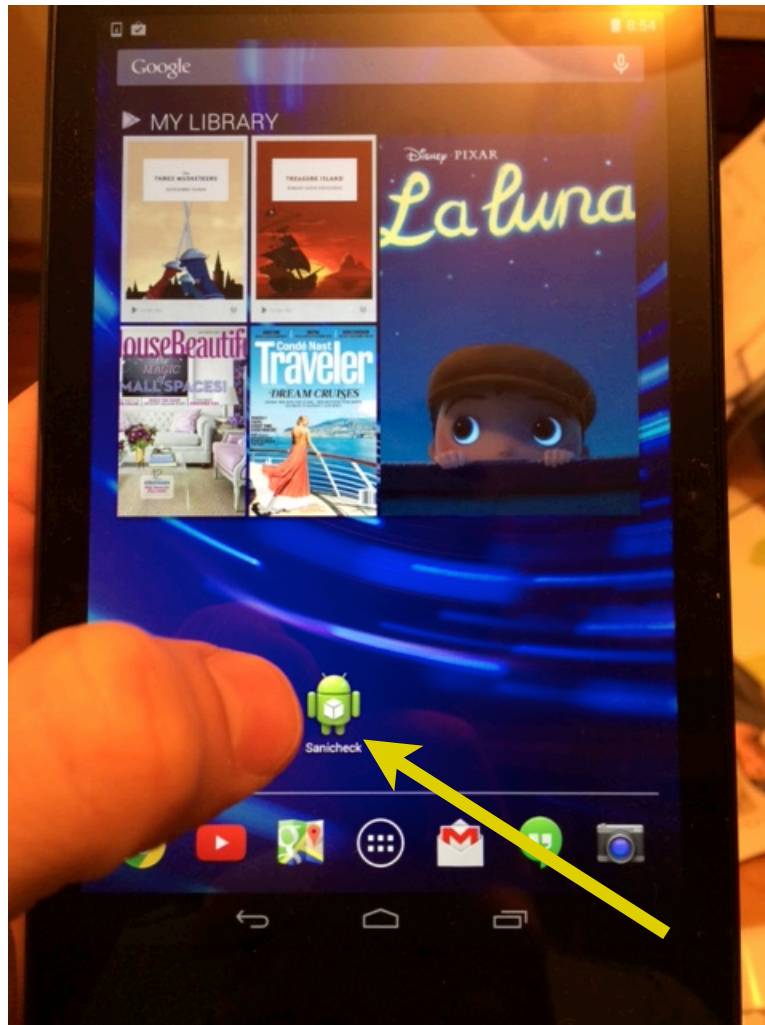


2. The power cable consists of a red and black wire with a keyed connector on the end. Insert this connector into the appropriate header as shown in the next two photos.

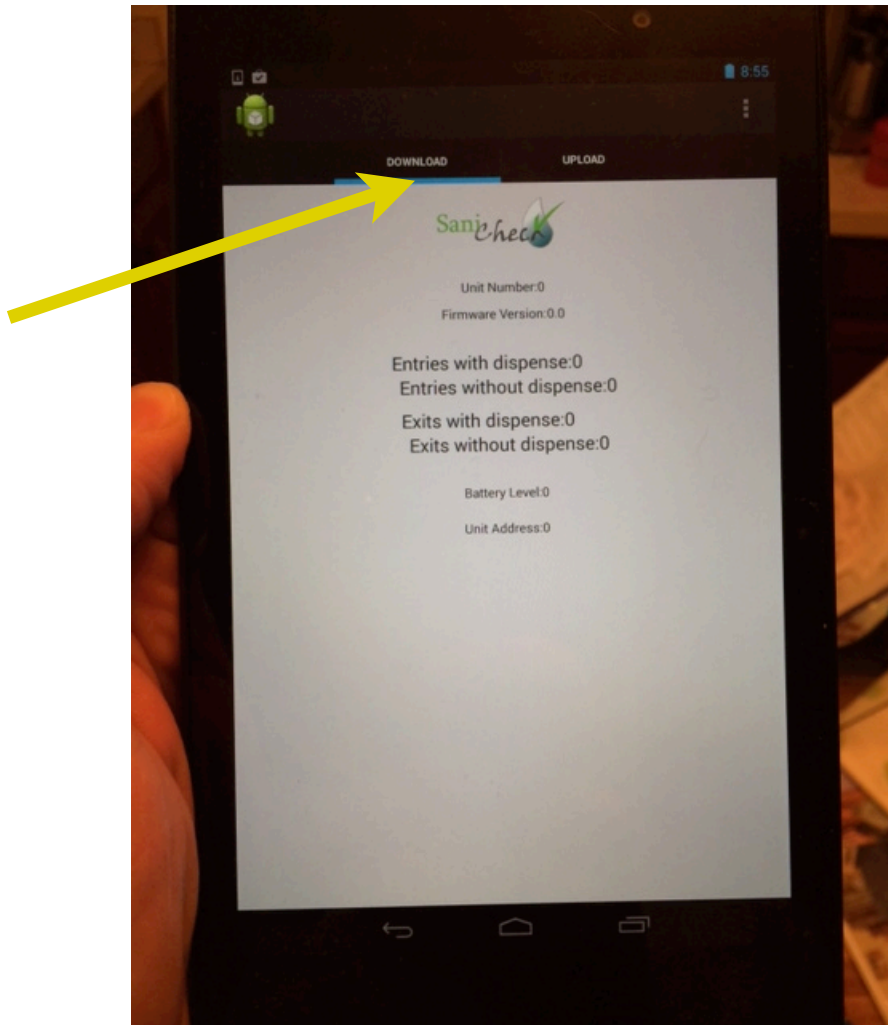




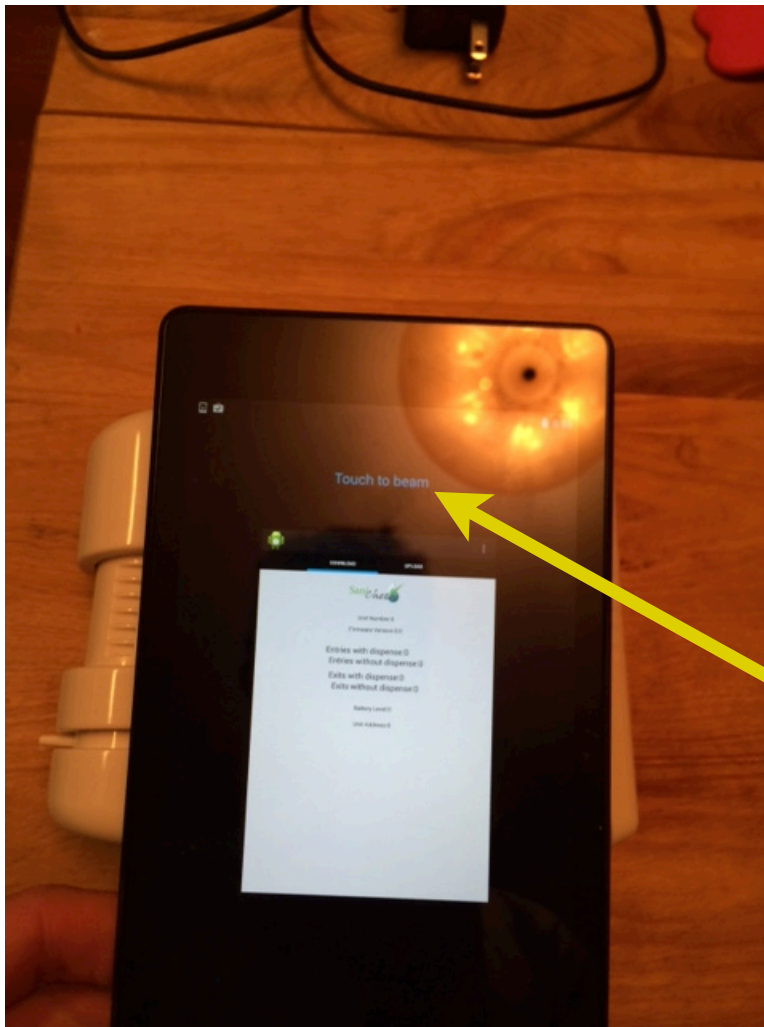
3. Put the plastic cover back in place and slide it up to secure it into position.
4. To test the NFC (near field communication) functions of the Sanicheck, turn on the provided Nexus Tablet by pressing and holding the power button on the top right side.
5. Tap the "Sanicheck App" icon as shown in the next picture.

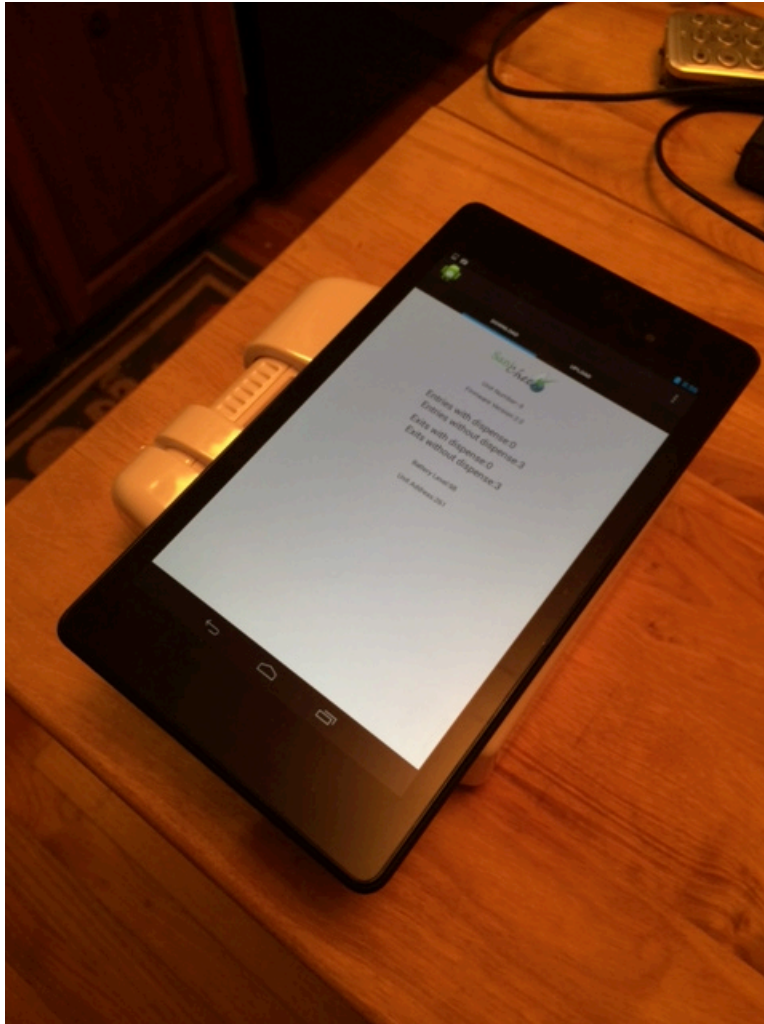


6. Make sure the “Download” tab is selected as in the next photo.

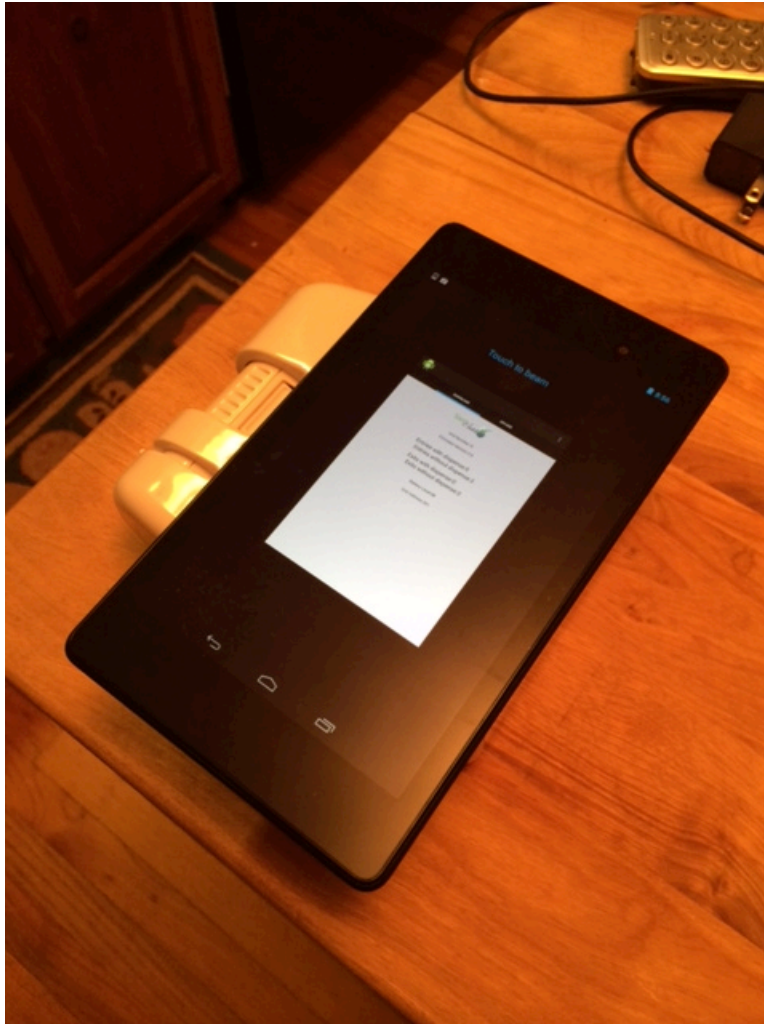


7. Hold the back of the table up against the front of the Sanicheck unit as in the next photo. The Sanicheck unit will beep. The Tablet UI will zoom out slightly and a message will be displayed "Touch To Beam". **DO NOT TOUCH THE SCEEN at this time.** Wait approximately 5 seconds, and the data will automatically transfer.

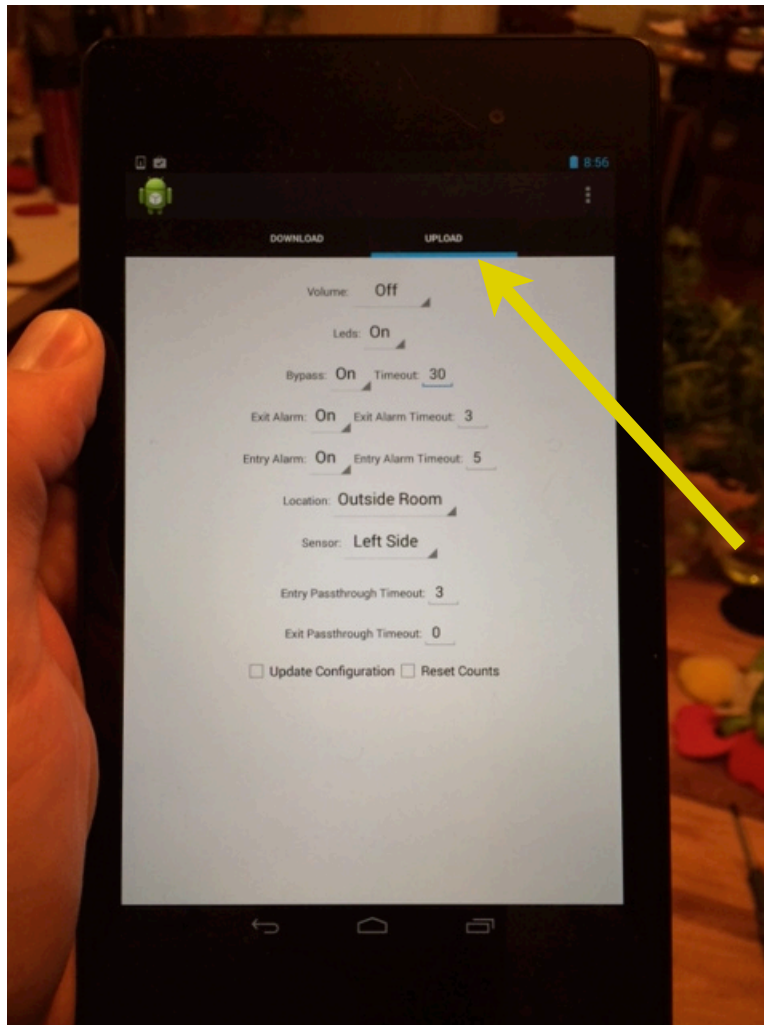




8. Pull the tablet away from the Sanicheck unit and wait for the beep to indicate disconnection. Data download is now complete.



9. To change the configuration of the Sanicheck unit, switch the App to the “Upload Tab” as in the next photo. **If the previous steps worked properly, the current Sanicheck configuration will be displayed as in the next photo.**



10. Change any of the desired values. Hold the tablet back up to the Sanicheck and wait for the beep followed by UI zoom. The message will once again appear “Touch to Beam”. This time, **TOUCH THE SCREEN to beam the new configuration to the Sanicheck as in the next photo.**

