

## TEST REPORT

**Product** : WisePad 2  
**Trade mark** : BBPOS  
**Model/Type reference** : WisePad 2  
**Serial Number** : N/A  
**Report Number** : EED32I00208204  
**FCC ID** : 2AB7X-WISEPAD2  
**Date of Issue** : Aug. 25, 2016  
**Test Standards** : 47 CFR Part 15 Subpart C (2015)  
**Test result** : PASS

Prepared for:

**BBPOS International Limited**  
**Suite 1602, 16/F, Tower 2, Nina Tower, No. 8 Yeung Uk Road,**  
**Tsuen Wan, N.T. HK, Hong Kong**

Prepared by:

**Centre Testing International Group Co., Ltd.**  
**Hongwei Industrial Zone, Bao'an 70 District,**  
**Shenzhen, Guangdong, China**  
**TEL: +86-755-3368 3668**  
**FAX: +86-755-3368 3385**

Tested By:

*Tom - chen*

Tom chen (Test Project)

Compiled by:

*Kevin Yang*

Kevin yang (Project Engineer)

Reviewed by:

*Sheek, Luo*

Sheek Luo (Reviewer)

Approved by:

*Sheek, Luo*

Sheek Luo (Lab supervisor)

Date:

Aug. 25, 2016

Check No.: 2384397829



## 2 Version

Version No.	Date	Description
00	Aug. 25, 2016	Original

### 3 Test Summary

Test Item	Test Requirement	Test method	Result
Antenna Requirement	47 CFR Part 15Subpart C Section 15.203/15.247 (c)	ANSI C63.10-2013	PASS
AC Power Line Conducted Emission	47 CFR Part 15Subpart C Section 15.207	ANSI C63.10-2013	PASS
Conducted Peak Output Power	47 CFR Part 15Subpart C Section 15.247 (b)(3)	ANSI C63.10-2013/ KDB 558074 D01v03r05	PASS
6dB Occupied Bandwidth	47 CFR Part 15Subpart C Section 15.247 (a)(2)	ANSI C63.10-2013/ KDB 558074 D01v03r05	PASS
Power Spectral Density	47 CFR Part 15Subpart C Section 15.247 (e)	ANSI C63.10-2013/ KDB 558074 D01v03r05	PASS
Band-edge for RF Conducted Emissions	47 CFR Part 15Subpart C Section 15.247(d)	ANSI C63.10-2013/ KDB 558074 D01v03r05	PASS
RF Conducted Spurious Emissions	47 CFR Part 15Subpart C Section 15.247(d)	ANSI C63.10-2013/ KDB 558074 D01v03r05	PASS
Radiated Spurious Emissions	47 CFR Part 15Subpart C Section 15.205/15.209	ANSI C63.10-2013	PASS
Restricted bands around fundamental frequency (Radiated Emission)	47 CFR Part 15Subpart C Section 15.205/15.209	ANSI C63.10-2013	PASS

Remark:

Test according to ANSI C63.4-2014 & ANSI C63.10-2013.

The tested sample and the sample information are provided by the client.

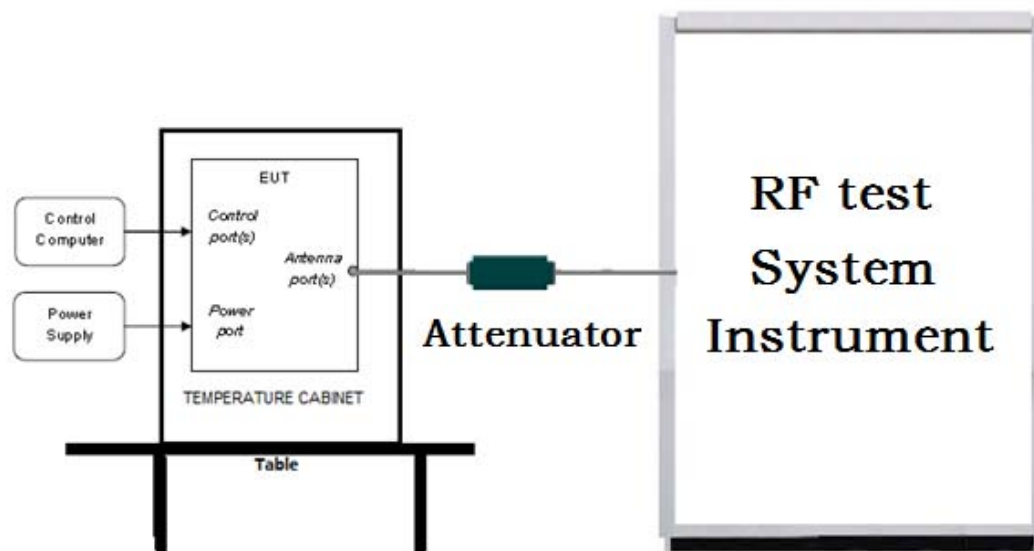
## 4 Content

<b>1 COVER PAGE.....</b>	<b>1</b>
<b>2 VERSION.....</b>	<b>2</b>
<b>3 TEST SUMMARY.....</b>	<b>3</b>
<b>4 CONTENT.....</b>	<b>4</b>
<b>5 TEST REQUIREMENT.....</b>	<b>5</b>
5.1 TEST SETUP.....	5
5.1.1 For Conducted test setup.....	5
5.1.2 For Radiated Emissions test setup.....	5
5.1.3 For Conducted Emissions test setup.....	6
5.2 TEST ENVIRONMENT.....	6
5.3 TEST CONDITION.....	6
<b>6 GENERAL INFORMATION.....</b>	<b>7</b>
6.1 CLIENT INFORMATION.....	7
6.2 GENERAL DESCRIPTION OF EUT.....	7
6.3 PRODUCT SPECIFICATION SUBJECTIVE TO THIS STANDARD.....	7
6.4 DESCRIPTION OF SUPPORT UNITS.....	8
6.5 TEST LOCATION.....	8
6.6 TEST FACILITY.....	8
6.7 DEVIATION FROM STANDARDS.....	9
6.8 ABNORMALITIES FROM STANDARD CONDITIONS.....	9
6.9 OTHER INFORMATION REQUESTED BY THE CUSTOMER.....	9
6.10 MEASUREMENT UNCERTAINTY (95% CONFIDENCE LEVELS, K=2).....	9
<b>7 EQUIPMENT LIST.....</b>	<b>10</b>
<b>8 RADIO TECHNICAL REQUIREMENTS SPECIFICATION.....</b>	<b>12</b>
Appendix A): 6dB Occupied Bandwidth.....	13
Appendix B): Conducted Peak Output Power.....	15
Appendix C): Band-edge for RF Conducted Emissions.....	17
Appendix D): RF Conducted Spurious Emissions.....	18
Appendix E): Power Spectral Density.....	21
Appendix F): Antenna Requirement.....	23
Appendix G): AC Power Line Conducted Emission.....	24
Appendix H): Restricted bands around fundamental frequency (Radiated).....	27
Appendix I): Radiated Spurious Emissions.....	30
<b>PHOTOGRAPHS OF TEST SETUP.....</b>	<b>35</b>
<b>PHOTOGRAPHS OF EUT CONSTRUCTIONAL DETAILS.....</b>	<b>37</b>

## 5 Test Requirement

### 5.1 Test setup

#### 5.1.1 For Conducted test setup



#### 5.1.2 For Radiated Emissions test setup

Radiated Emissions setup:

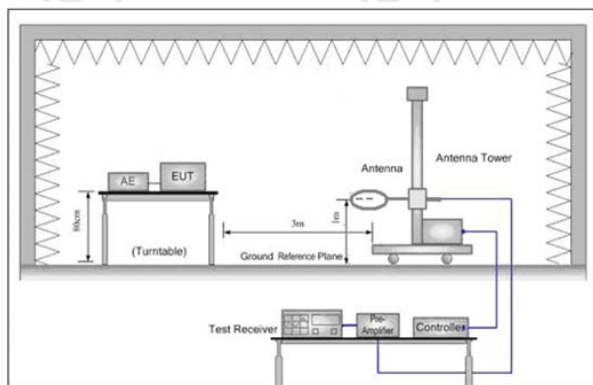


Figure 1. Below 30MHz

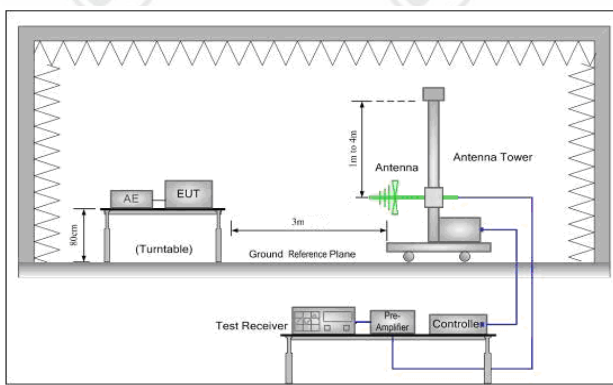


Figure 2. 30MHz to 1GHz

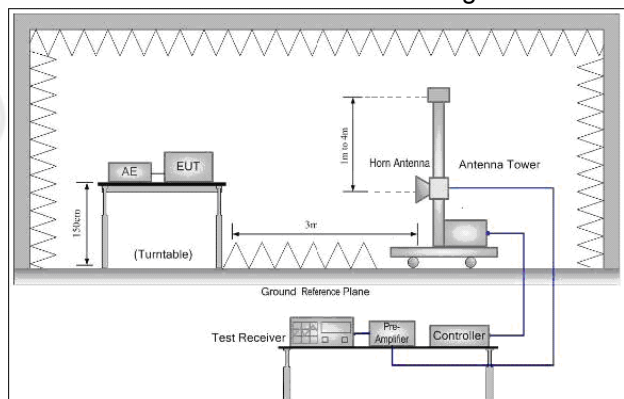
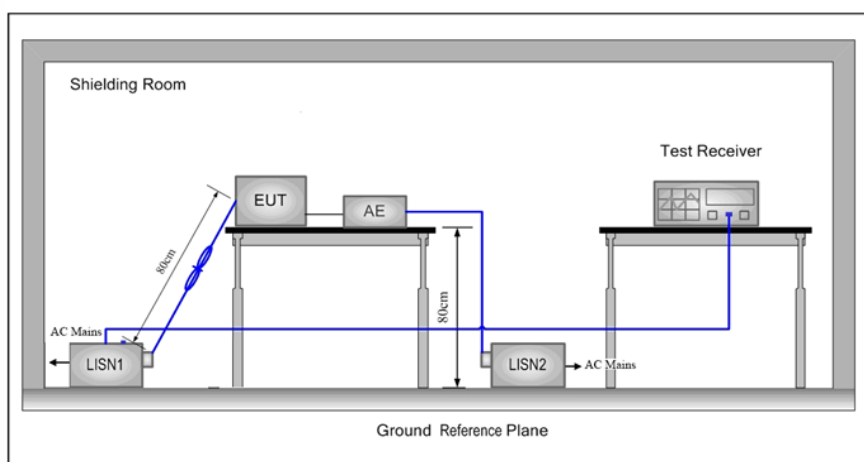


Figure 3. Above 1GHz



### 5.1.3 For Conducted Emissions test setup

#### Conducted Emissions setup



## 5.2 Test Environment

Operating Environment:	
Temperature:	21 °C
Humidity:	54 % RH
Atmospheric Pressure:	1010 mbar

## 5.3 Test Condition

Test channel:

Test Mode	Tx	RF Channel		
		Low(L)	Middle(M)	High(H)
GFSK	2402MHz ~2480 MHz	Channel 1	Channel 20	Channel 40
		2402MHz	2440MHz	2480MHz
Transmitting mode:	Keep the EUT in transmitting mode with all kind of modulation and all kind of data rate.			

## 6 General Information

### 6.1 Client Information

Applicant:	BBPOS International Limited
Address of Applicant:	Suite 1602, 16/F, Tower 2, Nina Tower, No. 8 Yeung Uk Road, Tsuen Wan, N.T. HK, Hong Kong
Manufacturer:	BBPOS International Limited
Address of Manufacturer:	Suite 1602, 16/F, Tower 2, Nina Tower, No. 8 Yeung Uk Road, Tsuen Wan, N.T. HK, Hong Kong

### 6.2 General Description of EUT

Product Name:	WisePad 2
Mode No.(EUT):	WisePad 2
Trade Mark:	BBPOS
EUT Supports Radios application:	BT 2.1(2402MHz-2480MHz), BT 4.0(2402MHz-2480MHz), NFC(13.56MHz), WIFib/g/n(HT20)(2412MHz-2462MHz), 2G(850MHz/1900MHz)
Power Supply:	DC 3.7V by Battery DC 5V by USB port
Battery:	Li-polymer 3.7V, 750mAh
Sample Received Date:	Jul. 26. 2016
Sample tested Date:	Jul. 26. 2016 to Aug. 25, 2016

### 6.3 Product Specification subjective to this standard

Operation Frequency:	2402MHz~2480MHz						
Bluetooth Version:	4.0						
Modulation Technique:	DSSS						
Modulation Type:	GFSK						
Number of Channel:	40						
Sample Type:	Portable production						
Antenna Type:	Integral						
Test Power Grade:	N/A						
Test Software of EUT:	BBPOS_Transaction						
Antenna Gain:	1dBi						
Test Voltage:	AC 120V/50Hz, DC 3.7V						
Operation Frequency each of channel							
Channel	Frequency	Channel	Frequency	Channel	Frequency	Channel	Frequency
1	2402MHz	11	2422MHz	21	2442MHz	31	2462MHz
2	2404MHz	12	2424MHz	22	2444MHz	32	2464MHz
3	2406MHz	13	2426MHz	23	2446MHz	33	2466MHz
4	2408MHz	14	2428MHz	24	2448MHz	34	2468MHz
5	2410MHz	15	2430MHz	25	2450MHz	35	2470MHz
6	2412MHz	16	2432MHz	26	2452MHz	36	2472MHz
7	2414MHz	17	2434MHz	27	2454MHz	37	2474MHz

8	2416MHz	18	2436MHz	28	2456MHz	38	2476MHz
9	2418MHz	19	2438MHz	29	2458MHz	39	2478MHz
10	2420MHz	20	2440MHz	30	2460MHz	40	2480MHz

## 6.4 Description of Support Units

### 1) support equipment

Description	Manufacturer	Model No.	Certification	Supplied by
laptop	LENOVO	E46L	FCC DOC	CTI
Mouse	LENOVO	LXH-EMS-10ZA	FCC DOC	CTI

## 6.5 Test Location

All tests were performed at:

Centre Testing International Group Co., Ltd.

Hongwei Industrial Zone, Bao'an 70 District, Shenzhen, Guangdong, China 518101

Telephone: +86 (0) 755 33683668 Fax: +86 (0) 755 33683385

No tests were sub-contracted.

## 6.6 Test Facility

The test facility is recognized, certified, or accredited by the following organizations:

### **CNAS-Lab Code: L1910**

Centre Testing International Group Co., Ltd. has been assessed and proved to be in compliance with CNAS-CL01 Accreditation Criteria for Testing and Calibration Laboratories (identical to ISO/IEC 17025: 2005 General Requirements) for the Competence of Testing and Calibration Laboratories..

### **A2LA-Lab Cert. No. 3061.01**

Centre Testing International Group Co., Ltd. EMC Laboratory has been accredited by A2LA for technical competence in the field of electrical testing, and proved to be in compliance with ISO/IEC 17025: 2005 General Requirements for the Competence of Testing and Calibration Laboratories and any additional program requirements in the identified field of testing.

### **FCC-Registration No.: 886427**

Centre Testing International Group Co., Ltd. EMC Laboratory has been registered and fully described in a report filed with the FCC (Federal Communications Commission). The acceptance letter from the FCC is maintained in our files. Registration 886427.

### **IC-Registration No.: 7408A-2**

The 3m Alternate Test Site of Centre Testing International Group Co., Ltd. has been registered by Certification and Engineering Bureau of Industry Canada for the performance of radiated measurements with Registration No. 7408A-2 .

### **IC-Registration No.: 7408B-1**

The 10m Alternate Test Site of Centre Testing International Group Co., Ltd. has been registered by Certification and Engineering Bureau of Industry Canada for the performance of radiated measurements with Registration No. 7408B-1.

### **NEMKO-Aut. No.: ELA503**



Centre Testing International Group Co., Ltd. has been assessed the quality assurance system, the testing facilities, qualifications and testing practices of the relevant parts of the organization. The quality assurance system of the Laboratory has been validated against ISO/IEC 17025 or equivalent. The laboratory also fulfils the conditions described in Nemko Document NLA-10.

#### VCCI

The Radiation 3 & 10 meters site of Centre Testing International Group Co., Ltd. has been registered in accordance with the Regulations for Voluntary Control Measures with Registration No.: R-4096.

Main Ports Conducted Interference Measurement of Centre Testing International Group Co., Ltd. has been registered in accordance with the Regulations for Voluntary Control Measures with Registration No.: C-4563.

Telecommunication Ports Conducted Disturbance Measurement of Centre Testing International Group Co., Ltd. has been registered in accordance with the Regulations for Voluntary Control Measures with Registration No.: T-2146.

The Radiation 3 meters site of Centre Testing International Group Co., Ltd. has been registered in accordance with the Regulations for Voluntary Control Measures with Registration No.: G-758

### 6.7 Deviation from Standards

None.

### 6.8 Abnormalities from Standard Conditions

None.

### 6.9 Other Information Requested by the Customer

None.

### 6.10 Measurement Uncertainty (95% confidence levels, k=2)

No.	Item	Measurement Uncertainty
1	Radio Frequency	$7.9 \times 10^{-8}$
2	RF power, conducted	0.31dB (30MHz-1GHz)
		0.57dB (1GHz-18GHz)
3	Radiated Spurious emission test	4.5dB (30MHz-1GHz)
		4.8dB (1GHz-12.75GHz)
4	Conduction emission	3.6dB (9kHz to 150kHz)
		3.2dB (150kHz to 30MHz)
5	Temperature test	0.64°C
6	Humidity test	2.8%
7	DC power voltages	0.025%

## 7 Equipment List

RF test system					
Equipment	Manufacturer	Mode No.	Serial Number	Cal. Date (mm-dd-yyyy)	Cal. Due date (mm-dd-yyyy)
Signal Generator	Keysight	E8257D	MY53401106	04-01-2016	03-31-2017
Communication test set test set	Agilent	N4010A	MY51400230	04-01-2016	03-31-2017
Spectrum Analyzer	Keysight	N9010A	MY54510339	04-01-2016	03-31-2017
Signal Generator	Keysight	N5182B	MY53051549	04-01-2016	03-31-2017
High-pass filter	Sinoscite	FL3CX03WG18 NM12-0398-002	---	01-12-2016	01-11-2017
High-pass filter	MICRO-TRONICS	SPA-F-63029-4	---	01-12-2016	01-11-2017
DC Power	Keysight	E3642A	MY54436035	04-01-2016	03-31-2017
PC-1	Lenovo	R4960d	---	04-01-2016	03-31-2017
power meter & power sensor	R&S	OSP120	101374	04-01-2016	03-31-2017
RF control unit	JS Tonscend	JS0806-2	158060006	04-01-2016	03-31-2017
BT&WI-FI Automatic test software	JS Tonscend	JS1120-2	---	04-01-2016	03-31-2017

Conducted disturbance Test					
Equipment	Manufacturer	Mode No.	Serial Number	Cal. date (mm-dd-yyyy)	Cal. Due date (mm-dd-yyyy)
Receiver	R&S	ESCI	100009	06-16-2016	06-15-2017
Temperature/ Humidity Indicator	TAYLOR	1451	1905	04-27-2016	04-26-2017
Communication test set	Agilent	E5515C	GB47050534	04-01-2016	03-31-2017
Communication test set	R&S	CMW500	152394	04-01-2016	03-31-2017
LISN	R&S	ENV216	100098	06-16-2016	06-15-2017
LISN	schwarzbeck	NNLK8121	8121-529	06-16-2016	06-15-2017
Voltage Probe	R&S	ESH2-Z3	--	07-09-2014	07-07-2017
Current Probe	R&S	EZ17	100106	06-16-2016	06-15-2017
ISN	TESEQ GmbH	ISN T800	30297	01-29-2015	01-27-2017

3M Semi/full-anechoic Chamber					
Equipment	Manufacturer	Mode No.	Serial Number	Cal. date (mm-dd-yyyy)	Cal. Due date (mm-dd-yyyy)
3M Chamber & Accessory Equipment	TDK	SAC-3	---	06-05-2016	06-05-2019
TRILOG Broadband Antenna	SCHWARZBECK	VULB9163	9163-484	05-23-2016	05-22-2017
Microwave Preamplifier	Agilent	8449B	3008A02425	02-04-2016	02-03-2017
Horn Antenna	ETS-LINDGREN	3117	00057410	06-30-2015	06-28-2018
Horn Antenna	A.H.SYSTEMS	SAS-574	374	06-30-2015	06-28-2018
Loop Antenna	ETS	6502	00071730	07-30-2015	07-28-2017
Spectrum Analyzer	R&S	FSP40	100416	06-16-2016	06-15-2017
Receiver	R&S	ESCI	100435	06-16-2016	06-15-2017
Multi device Controller	maturo	NCD/070/1071 1112	---	01-12-2016	01-11-2017
LISN	schwarzbeck	NNBM8125	81251547	06-16-2016	06-15-2017
LISN	schwarzbeck	NNBM8125	81251548	06-16-2016	06-15-2017
Signal Generator	Agilent	E4438C	MY45095744	04-01-2016	03-31-2017
Signal Generator	Keysight	E8257D	MY53401106	04-01-2016	03-31-2017
Temperature/ Humidity Indicator	TAYLOR	1451	1905	04-27-2016	04-26-2017
Communication test set	Agilent	E5515C	GB47050534	04-01-2016	03-31-2017
Cable line	Fulai(7M)	SF106	5219/6A	01-12-2016	01-11-2017
Cable line	Fulai(6M)	SF106	5220/6A	01-12-2016	01-11-2017
Cable line	Fulai(3M)	SF106	5216/6A	01-12-2016	01-11-2017
Cable line	Fulai(3M)	SF106	5217/6A	01-12-2016	01-11-2017
Communication test set	R&S	CMW500	152394	04-01-2016	03-31-2017
High-pass filter	Sinoscite	FL3CX03WG1 8NM12-0398- 002	---	01-12-2016	01-11-2017
High-pass filter	MICRO-TRONICS	SPA-F-63029- 4	---	01-12-2016	01-11-2017
band rejection filter	Sinoscite	FL5CX01CA09 CL12-0395- 001	---	01-12-2016	01-11-2017
band rejection filter	Sinoscite	FL5CX01CA08 CL12-0393- 001	---	01-12-2016	01-11-2017
band rejection filter	Sinoscite	FL5CX02CA04 CL12-0396- 002	---	01-12-2016	01-11-2017
band rejection filter	Sinoscite	FL5CX02CA03 CL12-0394- 001	---	01-12-2016	01-11-2017

## 8 Radio Technical Requirements Specification

### Reference documents for testing:

No.	Identity	Document Title
1	FCC Part15C (2015)	Subpart C-Intentional Radiators
2	ANSI C63.10-2013	American National Standard for Testing Unlicensed Wireless Devices

### Test Results List:

Test Requirement	Test method	Test item	Verdict	Note
Part15C Section 15.247 (a)(2)	ANSI C63.10	6dB Occupied Bandwidth	PASS	Appendix A)
Part15C Section 15.247 (b)(3)	ANSI C63.10	Conducted Peak Output Power	PASS	Appendix B)
Part15C Section 15.247(d)	ANSI C63.10	Band-edge for RF Conducted Emissions	PASS	Appendix C)
Part15C Section 15.247(d)	ANSI C63.10	RF Conducted Spurious Emissions	PASS	Appendix D)
Part15C Section 15.247 (e)	ANSI C63.10	Power Spectral Density	PASS	Appendix E)
Part15C Section 15.203/15.247 (c)	ANSI C63.10	Antenna Requirement	PASS	Appendix F)
Part15C Section 15.207	ANSI C63.10	AC Power Line Conducted Emission	PASS	Appendix G)
Part15C Section 15.205/15.209	ANSI C63.10	Restricted bands around fundamental frequency (Radiated Emission)	PASS	Appendix H)
Part15C Section 15.205/15.209	ANSI C63.10	Radiated Spurious Emissions	PASS	Appendix I)

## Appendix A): 6dB Occupied Bandwidth

### Test Result

Mode	Channel	6dB Bandwidth [MHz]	99% OBW[MHz]	Verdict	Remark
BLE	LCH	0.7234	1.0687	PASS	Peak detector
BLE	MCH	0.7259	1.0673	PASS	
BLE	HCH	0.7193	1.0676	PASS	



## Test Graphs

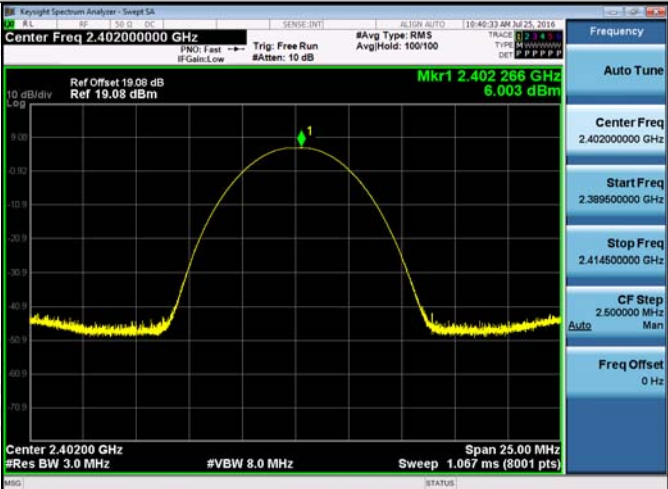
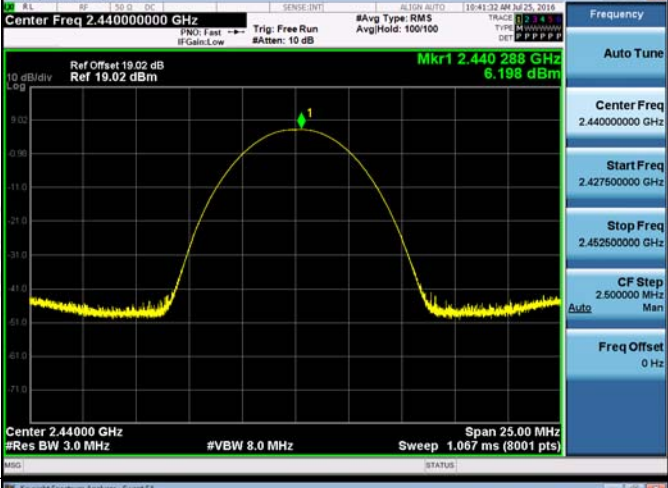
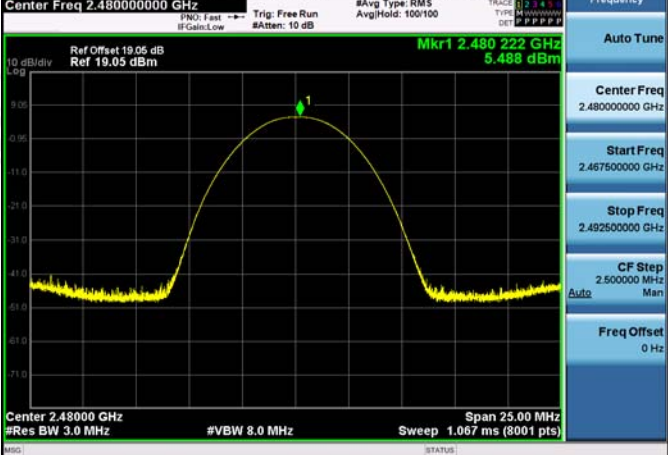
Graphs		
LCH		 <p>Key: Knight Spectrum Analyzer - Occupied BW</p> <p>Center Freq: 2.402000000 GHz</p> <p>Ref Offset: 19.08 dB</p> <p>Ref: 15.00 dBm</p> <p>Center Freq: 2.402000000 GHz</p> <p>Trig: Free Run</p> <p>Avg/Hold: &gt;10/10</p> <p>Radio Std: None</p> <p>Radio Device: BTS</p> <p>#F Gain: Low</p> <p>#Att: 20 dB</p> <p>Span: 3 MHz</p> <p>#Res BW: 100 kHz</p> <p>#VBW: 300 kHz</p> <p>Sweep: 1.067 ms</p> <p>Occupied Bandwidth: 1.0687 MHz</p> <p>Total Power: 12.2 dBm</p> <p>Transmit Freq Error: 35.247 kHz</p> <p>OBW Power: 99.00 %</p> <p>x dB Bandwidth: 723.4 kHz</p> <p>x dB: -6.00 dB</p>
MCH		 <p>Key: Knight Spectrum Analyzer - Occupied BW</p> <p>Center Freq: 2.440000000 GHz</p> <p>Ref Offset: 19.02 dB</p> <p>Ref: 29.02 dBm</p> <p>Center Freq: 2.440000000 GHz</p> <p>Trig: Free Run</p> <p>Avg/Hold: &gt;10/10</p> <p>Radio Std: None</p> <p>Radio Device: BTS</p> <p>#F Gain: Low</p> <p>#Att: 20 dB</p> <p>Span: 3 MHz</p> <p>#Res BW: 100 kHz</p> <p>#VBW: 300 kHz</p> <p>Sweep: 1.067 ms</p> <p>Occupied Bandwidth: 1.0673 MHz</p> <p>Total Power: 12.4 dBm</p> <p>Transmit Freq Error: 37.912 kHz</p> <p>OBW Power: 99.00 %</p> <p>x dB Bandwidth: 725.9 kHz</p> <p>x dB: -6.00 dB</p>
HCH		 <p>Key: Knight Spectrum Analyzer - Occupied BW</p> <p>Center Freq: 2.480000000 GHz</p> <p>Ref Offset: 19.05 dB</p> <p>Ref: 29.05 dBm</p> <p>Center Freq: 2.480000000 GHz</p> <p>Trig: Free Run</p> <p>Avg/Hold: &gt;10/10</p> <p>Radio Std: None</p> <p>Radio Device: BTS</p> <p>#F Gain: Low</p> <p>#Att: 20 dB</p> <p>Span: 3 MHz</p> <p>#Res BW: 100 kHz</p> <p>#VBW: 300 kHz</p> <p>Sweep: 1.067 ms</p> <p>Occupied Bandwidth: 1.0676 MHz</p> <p>Total Power: 11.7 dBm</p> <p>Transmit Freq Error: 40.263 kHz</p> <p>OBW Power: 99.00 %</p> <p>x dB Bandwidth: 719.3 kHz</p> <p>x dB: -6.00 dB</p>

## Appendix B): Conducted Peak Output Power

### Test Result

Mode	Channel	Conduct Peak Power[dBm]	Verdict
BLE	LCH	6.003	PASS
BLE	MCH	6.198	PASS
BLE	HCH	5.488	PASS

## Test Graphs

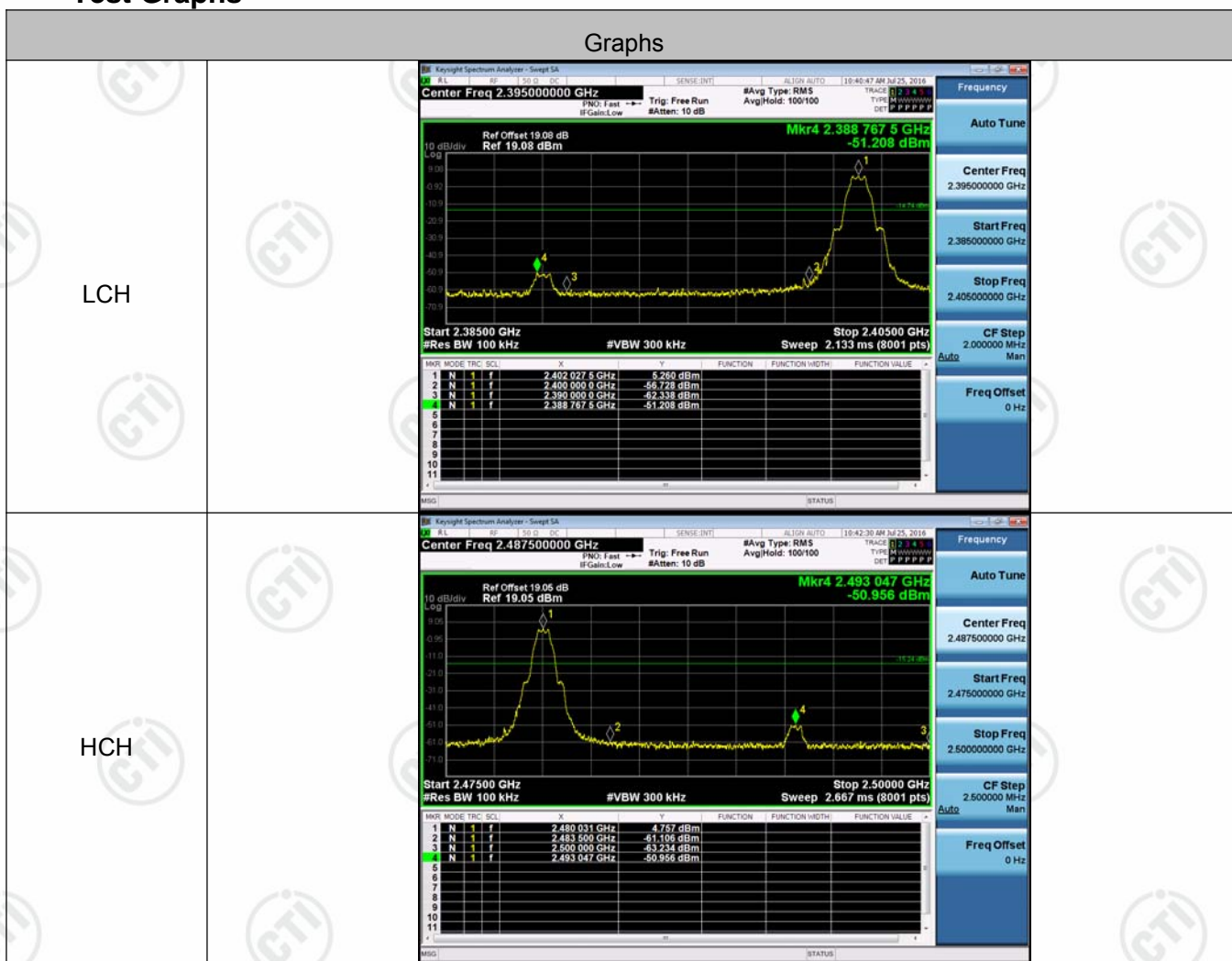
Graphs	
LCH	
MCH	
HCH	

## Appendix C): Band-edge for RF Conducted Emissions

Result Table

Mode	Channel	Carrier Power[dBm]	Max.Spurious Level [dBm]	Limit [dBm]	Verdict
BLE	LCH	5.260	-51.208	-14.74	PASS
BLE	HCH	4.757	-50.956	-15.24	PASS

Test Graphs



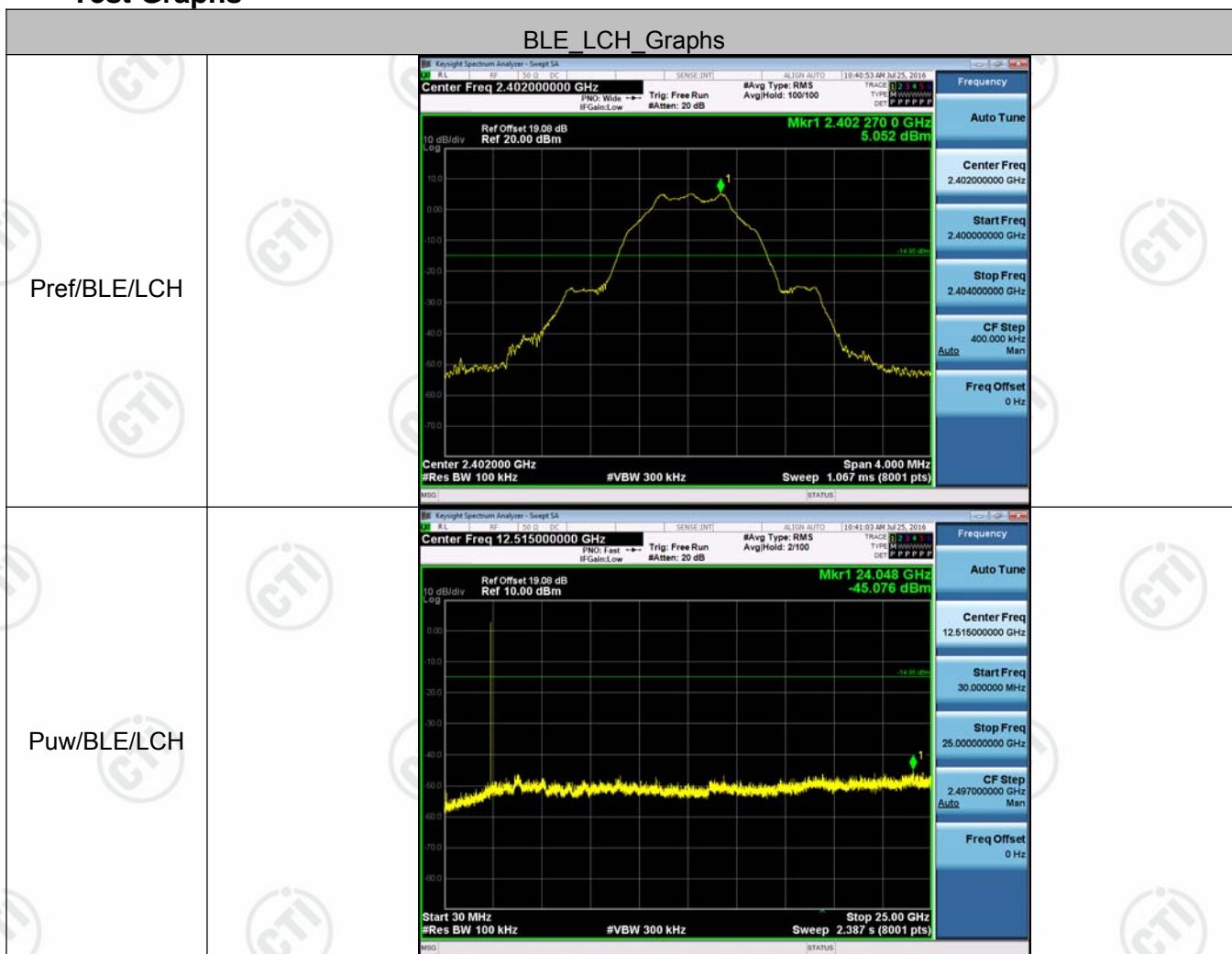


## Appendix D): RF Conducted Spurious Emissions

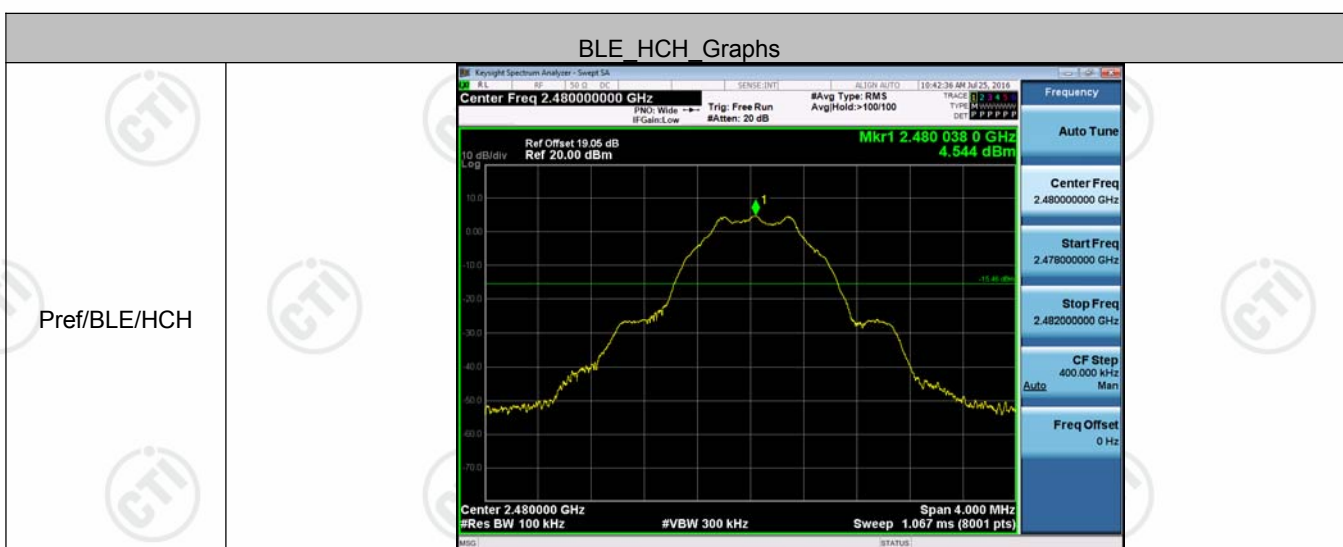
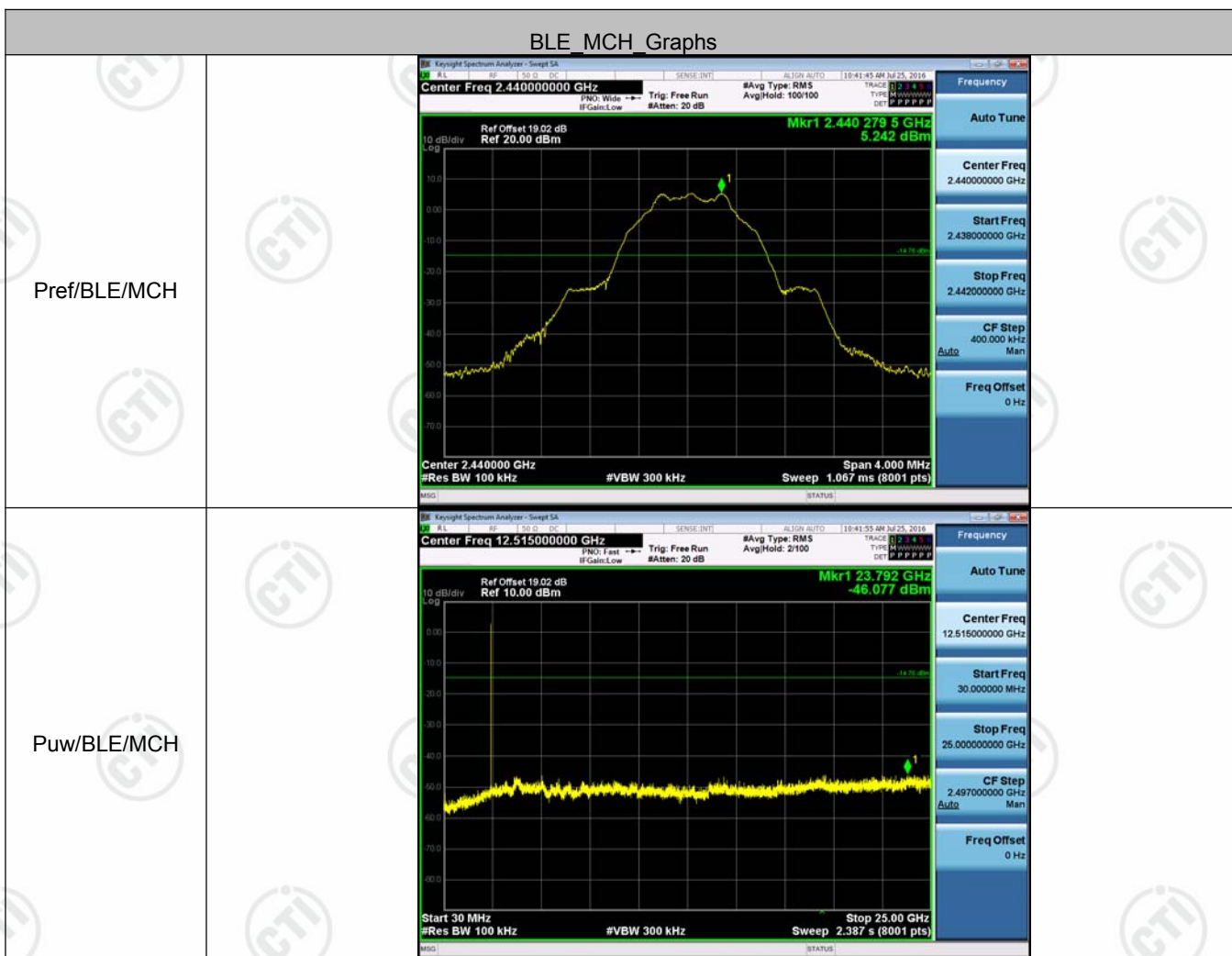
Result Table

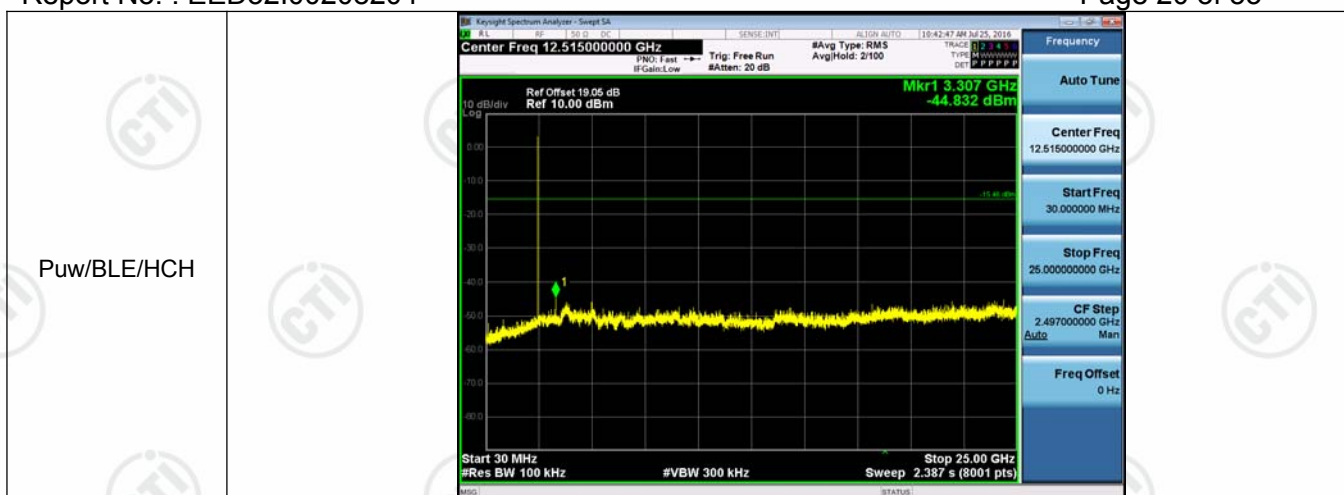
Mode	Channel	Pref [dBm]	Puw[dBm]	Verdict
BLE	LCH	5.052	<Limit	PASS
BLE	MCH	5.242	<Limit	PASS
BLE	HCH	4.544	<Limit	PASS

Test Graphs









## Appendix E): Power Spectral Density

Result Table

Mode	Channel	PSD [dBm/3kHz]	Limit [dBm/3kHz]	Verdict
BLE	LCH	-8.453	8	PASS
BLE	MCH	-8.135	8	PASS
BLE	HCH	-8.951	8	PASS

## Test Graphs

Graphs		
LCH		<p>Key: Keysight Spectrum Analyzer - Sweep SA Center Freq 2.40200000 GHz Ref Offset 19.08 dB Ref 10.00 dBm Mkr1 2.402 009 75 GHz -8.453 dBm Center 2.4020000 GHz #Res BW 3.0 kHz #VBW 10 kHz Sweep 158.4 ms (8001 pts) Span 1.500 MHz</p>
MCH		<p>Key: Keysight Spectrum Analyzer - Sweep SA Center Freq 2.44000000 GHz Ref Offset 19.02 dB Ref 10.00 dBm Mkr1 2.440 012 19 GHz -8.135 dBm Center 2.4400000 GHz #Res BW 3.0 kHz #VBW 10 kHz Sweep 158.4 ms (8001 pts) Span 1.500 MHz</p>
HCH		<p>Key: Keysight Spectrum Analyzer - Sweep SA Center Freq 2.48000000 GHz Ref Offset 19.05 dB Ref 10.00 dBm Mkr1 2.480 014 81 GHz -8.951 dBm Center 2.4800000 GHz #Res BW 3.0 kHz #VBW 10 kHz Sweep 158.4 ms (8001 pts) Span 1.500 MHz</p>



## Appendix F): Antenna Requirement

### 15.203 requirement:

An intentional radiator shall be designed to ensure that no antenna other than that furnished by the responsible party shall be used with the device. The use of a permanently attached antenna or of an antenna that uses a unique coupling to the intentional radiator, the manufacturer may design the unit so that a broken antenna can be replaced by the user, but the use of a standard antenna jack or electrical connector is prohibited.

### 15.247(b) (4) requirement:

The conducted output power limit specified in paragraph (b) of this section is based on the use of antennas with directional gains that do not exceed 6 dBi. Except as shown in paragraph (c) of this section, if transmitting antennas of directional gain greater than 6 dBi are used, the conducted output power from the intentional radiator shall be reduced below the stated values in paragraphs (b)(1), (b)(2), and (b)(3) of this section, as appropriate, by the amount in dB that the directional gain of the antenna exceeds 6 dBi.

### EUT Antenna:

The antenna is integrated on the main PCB and no consideration of replacement. The best case gain of the antenna is 1dBi.





## Appendix G): AC Power Line Conducted Emission

Test Procedure:	<p>Test frequency range :150KHz-30MHz</p> <p>1)The mains terminal disturbance voltage test was conducted in a shielded room.</p> <p>2) The EUT was connected to AC power source through a LISN 1 (Line Impedance Stabilization Network) which provides a <math>50\Omega/50\mu\text{H} + 5\Omega</math> linear impedance. The power cables of all other units of the EUT were connected to a second LISN 2, which was bonded to the ground reference plane in the same way as the LISN 1 for the unit being measured. A multiple socket outlet strip was used to connect multiple power cables to a single LISN provided the rating of the LISN was not exceeded.</p> <p>3)The tabletop EUT was placed upon a non-metallic table 0.8m above the ground reference plane. And for floor-standing arrangement, the EUT was placed on the horizontal ground reference plane,</p> <p>4) The test was performed with a vertical ground reference plane. The rear of the EUT shall be 0.4 m from the vertical ground reference plane. The vertical ground reference plane was bonded to the horizontal ground reference plane. The LISN 1 was placed 0.8 m from the boundary of the unit under test and bonded to a ground reference plane for LISNs mounted on top of the ground reference plane. This distance was between the closest points of the LISN 1 and the EUT. All other units of the EUT and associated equipment was at least 0.8 m from the LISN 2.</p> <p>5) In order to find the maximum emission, the relative positions of equipment and all of the interface cables must be changed according to ANSI C63.10 on conducted measurement.</p>														
Limit:	<table><tr><th rowspan="2">Frequency range (MHz)</th><th colspan="2">Limit (dB<math>\mu</math>V)</th></tr><tr><th>Quasi-peak</th><th>Average</th></tr><tr><td>0.15-0.5</td><td>66 to 56*</td><td>56 to 46*</td></tr><tr><td>0.5-5</td><td>56</td><td>46</td></tr><tr><td>5-30</td><td>60</td><td>50</td></tr></table> <p>* The limit decreases linearly with the logarithm of the frequency in the range 0.15 MHz to 0.50 MHz.</p> <p>NOTE : The lower limit is applicable at the transition frequency</p>	Frequency range (MHz)	Limit (dB $\mu$ V)		Quasi-peak	Average	0.15-0.5	66 to 56*	56 to 46*	0.5-5	56	46	5-30	60	50
Frequency range (MHz)	Limit (dB $\mu$ V)														
	Quasi-peak	Average													
0.15-0.5	66 to 56*	56 to 46*													
0.5-5	56	46													
5-30	60	50													

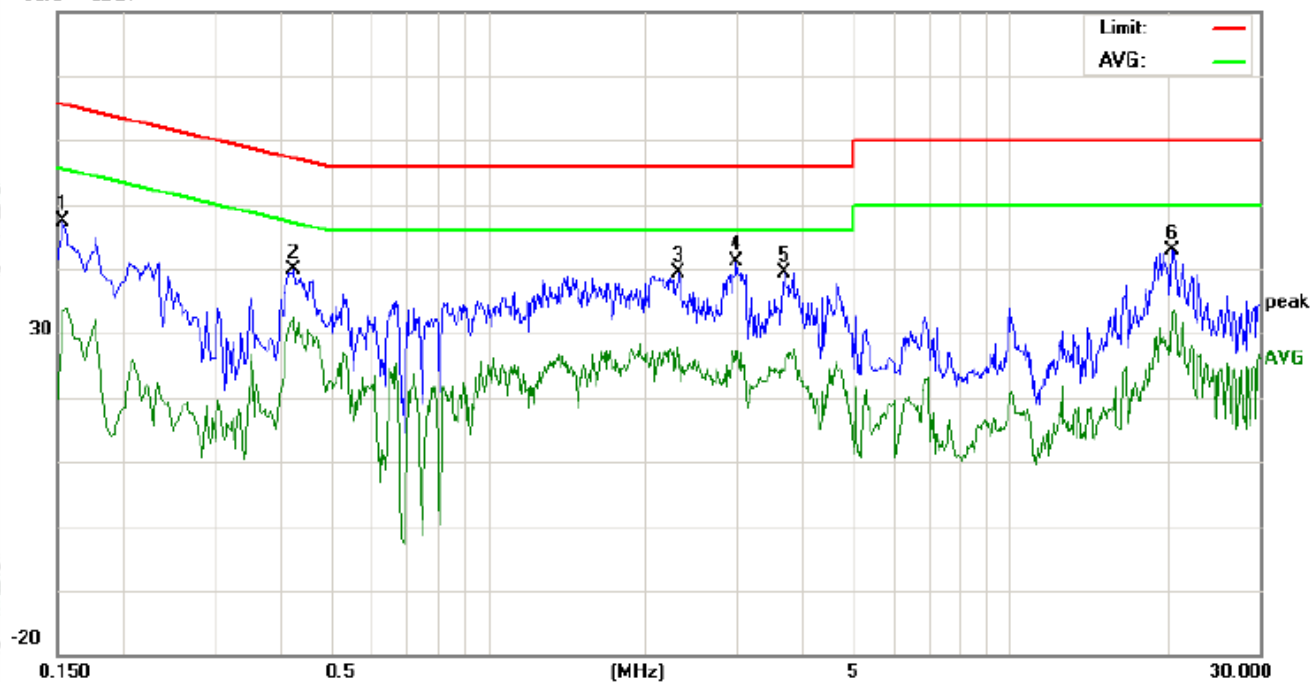
### Measurement Data

An initial pre-scan was performed on the live and neutral lines with peak detector.

Quasi-Peak and Average measurement were performed at the frequencies with maximized peak emission were detected.

Live line:

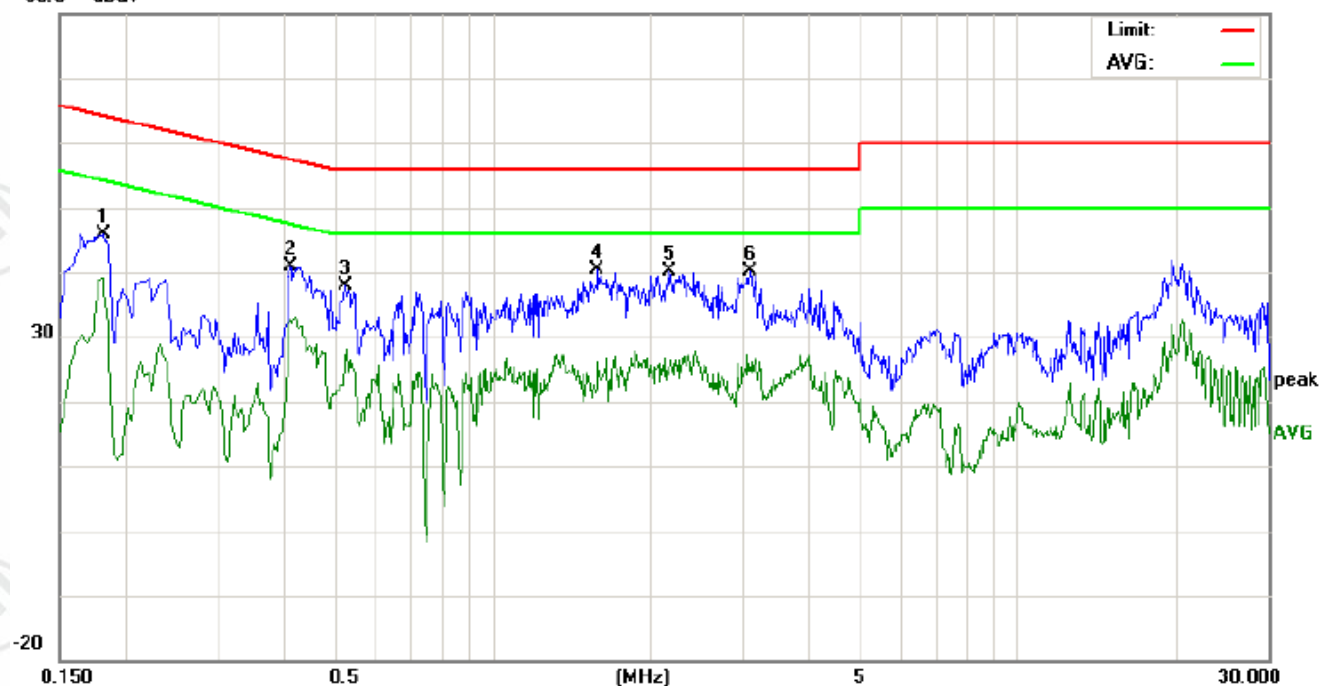
90.0 dBuV



No.	Freq. MHz	Reading_Level (dBuV)			Correct Factor dB	Measurement (dBuV)			Limit (dBuV)		Margin (dB)		P/F	Comment
		Peak	QP	AVG		peak	QP	AVG	QP	AVG	QP	AVG		
1	0.1539	37.64		23.85	9.80	47.44		33.65	65.78	55.78	-18.34	-22.13	P	
2	0.4259	30.09		22.59	9.90	39.99		32.49	57.33	47.33	-17.34	-14.84	P	
3	2.3260	29.38		16.62	10.00	39.38		26.62	56.00	46.00	-16.62	-19.38	P	
4	3.0059	31.13		17.27	10.00	41.13		27.27	56.00	46.00	-14.87	-18.73	P	
5	3.6939	29.48		14.55	10.00	39.48		24.55	56.00	46.00	-16.52	-21.45	P	
6	20.4780	32.28		22.86	10.49	42.77		33.35	60.00	50.00	-17.23	-16.65	P	

Neutral line:

80.0 dBuV



No.	Freq. MHz	Reading_Level (dBuV)			Correct Factor dB	Measurement (dBuV)			Limit (dBuV)		Margin (dB)		P/F	Comment
		Peak	QP	AVG		peak	QP	AVG	QP	AVG	QP	AVG		
1	0.1824	36.19		27.47	9.80	45.99		37.27	64.37	54.37	-18.38	-17.10	P	
2	0.4138	30.94		22.68	9.90	40.84		32.58	57.57	47.57	-16.73	-14.99	P	
3	0.5260	27.87		15.86	9.90	37.77		25.76	56.00	46.00	-18.23	-20.24	P	
4	1.5859	30.26		16.03	10.00	40.26		26.03	56.00	46.00	-15.74	-19.97	P	
5	2.1779	30.23		14.96	10.00	40.23		24.96	56.00	46.00	-15.77	-21.04	P	
6	3.1018	30.06		14.84	10.00	40.06		24.84	56.00	46.00	-15.94	-21.16	P	

Notes:

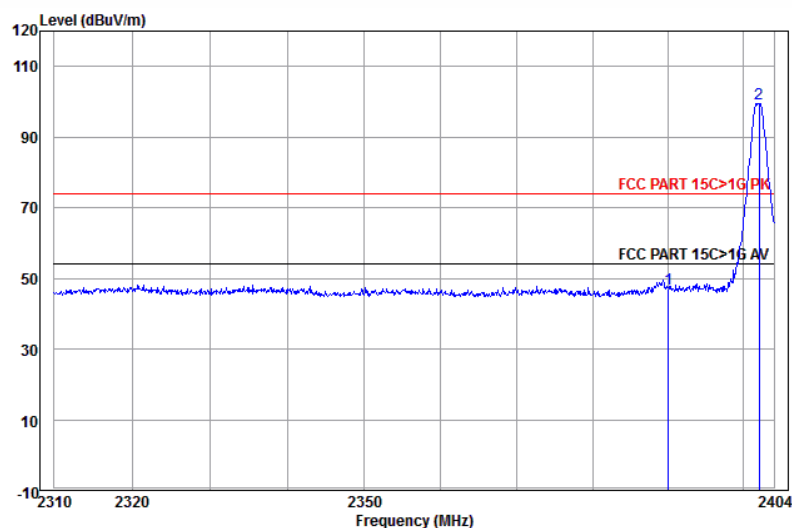
1. The following Quasi-Peak and Average measurements were performed on the EUT:
2. Final Test Level = Receiver Reading + LISN Factor + Cable Loss.

## Appendix H): Restricted bands around fundamental frequency (Radiated)

Receiver Setup:	Frequency	Detector	RBW	VBW	Remark
	30MHz-1GHz	Quasi-peak	120kHz	300kHz	Quasi-peak
	Above 1GHz	Peak	1MHz	3MHz	Peak
		Peak	1MHz	10Hz	Average
Test Procedure:	<b>Below 1GHz test procedure as below:</b>				
	a. The EUT was placed on the top of a rotating table 0.8 meters above the ground at a 3 meter semi-anechoic camber. The table was rotated 360 degrees to determine the position of the highest radiation.				
	b. The EUT was set 3 meters away from the interference-receiving antenna, which was mounted on the top of a variable-height antenna tower.				
	c. The antenna height is varied from one meter to four meters above the ground to determine the maximum value of the field strength. Both horizontal and vertical polarizations of the antenna are set to make the measurement.				
	d. For each suspected emission, the EUT was arranged to its worst case and then the antenna was tuned to heights from 1 meter to 4 meters and the rotatable was turned from 0 degrees to 360 degrees to find the maximum reading.				
	e. The test-receiver system was set to Peak Detect Function and Specified Bandwidth with Maximum Hold Mode.				
	f. Place a marker at the end of the restricted band closest to the transmit frequency to show compliance. Also measure any emissions in the restricted bands. Save the spectrum analyzer plot. Repeat for each power and modulation for lowest and highest channel				
	<b>Above 1GHz test procedure as below:</b>				
	g. Different between above is the test site, change from Semi- Anechoic Chamber to fully Anechoic Chamber change form table 0.8 meter to 1.5 meter( Above 18GHz the distance is 1 meter and table is 1.5 meter).				
	h. . Test the EUT in the lowest channel , the Highest channel				
	i. The radiation measurements are performed in X, Y, Z axis positioning for Transmitting mode, and found the X axis positioning which it is worse case.				
	j. Repeat above procedures until all frequencies measured was complete.				
Limit:	Frequency	Limit (dBμV/m @3m)		Remark	
	30MHz-88MHz	40.0		Quasi-peak Value	
	88MHz-216MHz	43.5		Quasi-peak Value	
	216MHz-960MHz	46.0		Quasi-peak Value	
	960MHz-1GHz	54.0		Quasi-peak Value	
	Above 1GHz	54.0		Average Value	
		74.0		Peak Value	

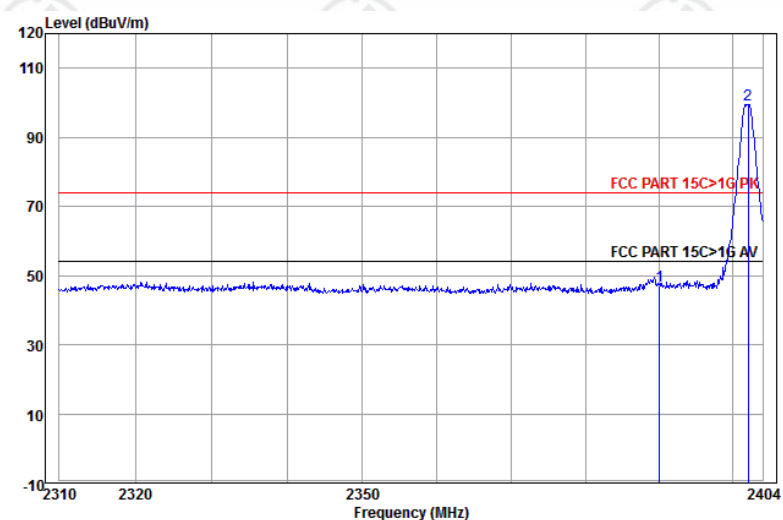
**Test plot as follows:**

Worse case mode:	GFSK(1-DH5)		
Frequency: 2390.0MHz	Test channel: Lowest	Polarization: Horizontal	Remark: Peak



	Ant Freq	Cable Factor	Preamp Loss	Preamp Factor	Read Level	Level	Limit Line	Over Limit	Pol/Phase	Remark
	MHz	dB/m	dB	dB	dBuV	dBuV/m	dBuV/m	dB		
1	2390.000	32.53	4.28	34.39	44.70	47.12	74.00	-26.88	Horizontal	
2 pp	2402.083	32.56	4.31	34.39	97.06	99.54	74.00	25.54	Horizontal	

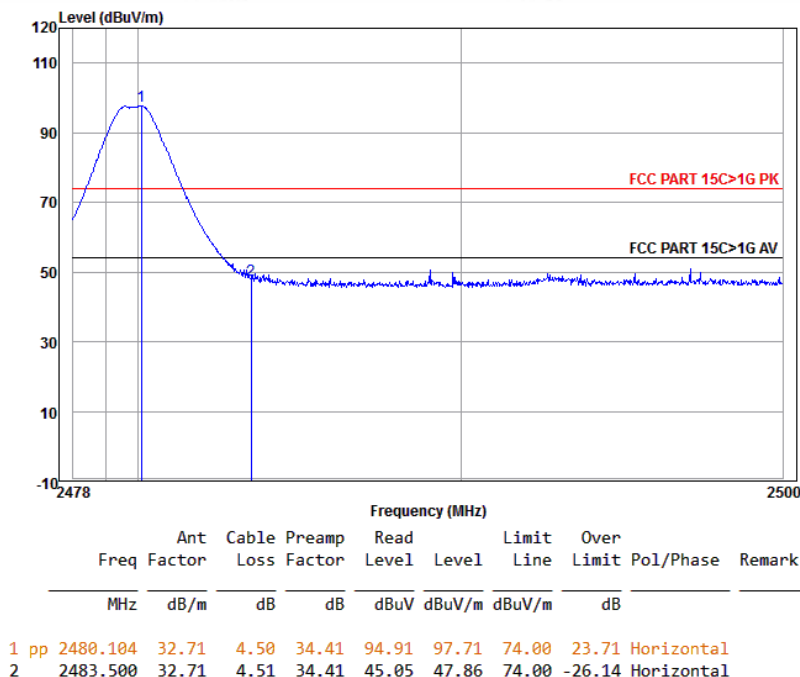
Worse case mode:	GFSK(1-DH5)		
Frequency: 2390.0MHz	Test channel: Lowest	Polarization: Vertical	Remark: Peak



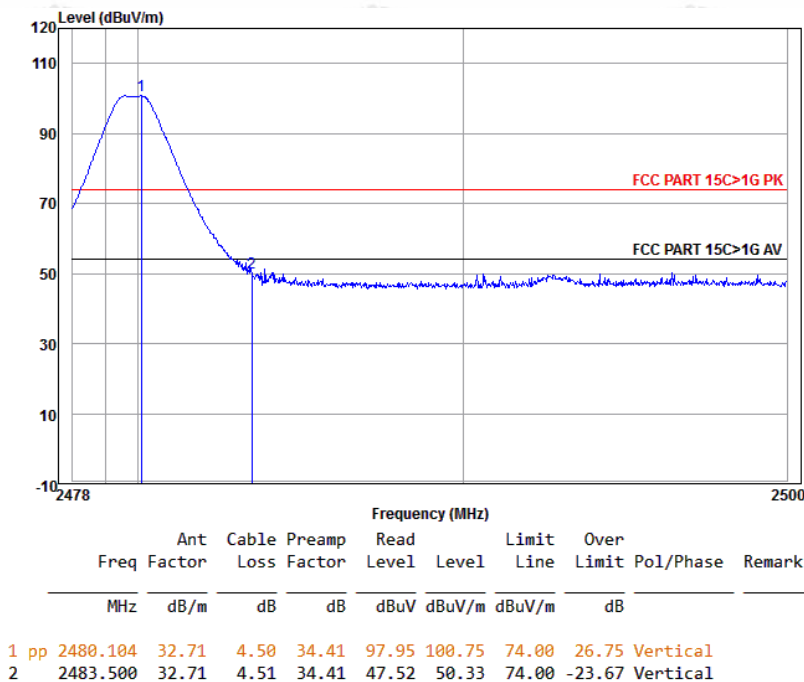
	Ant Freq	Cable Factor	Preamp Loss	Preamp Factor	Read Level	Level	Limit Line	Over Limit	Pol/Phase	Remark
	MHz	dB/m	dB	dB	dBuV	dBuV/m	dBuV/m	dB		
1	2390.000	32.53	4.28	34.39	44.70	47.12	74.00	-26.88	Vertical	
2 pp	2402.083	32.56	4.31	34.39	97.06	99.54	74.00	25.54	Vertical	



Worse case mode:	GFSK		
Frequency: 2483.5MHz	Test channel: Highest	Polarization: Horizontal	Remark: Peak



Worse case mode:	GFSK		
Frequency: 2483.5MHz	Test channel: Highest	Polarization: Vertical	Remark: Peak



**Note:**

1) The field strength is calculated by adding the Antenna Factor, Cable Factor & Preamplifier. The basic equation with a sample calculation is as follows:

Final Test Level =Receiver Reading -Correct Factor

Correct Factor = Preamplifier Factor– Antenna Factor–Cable Factor

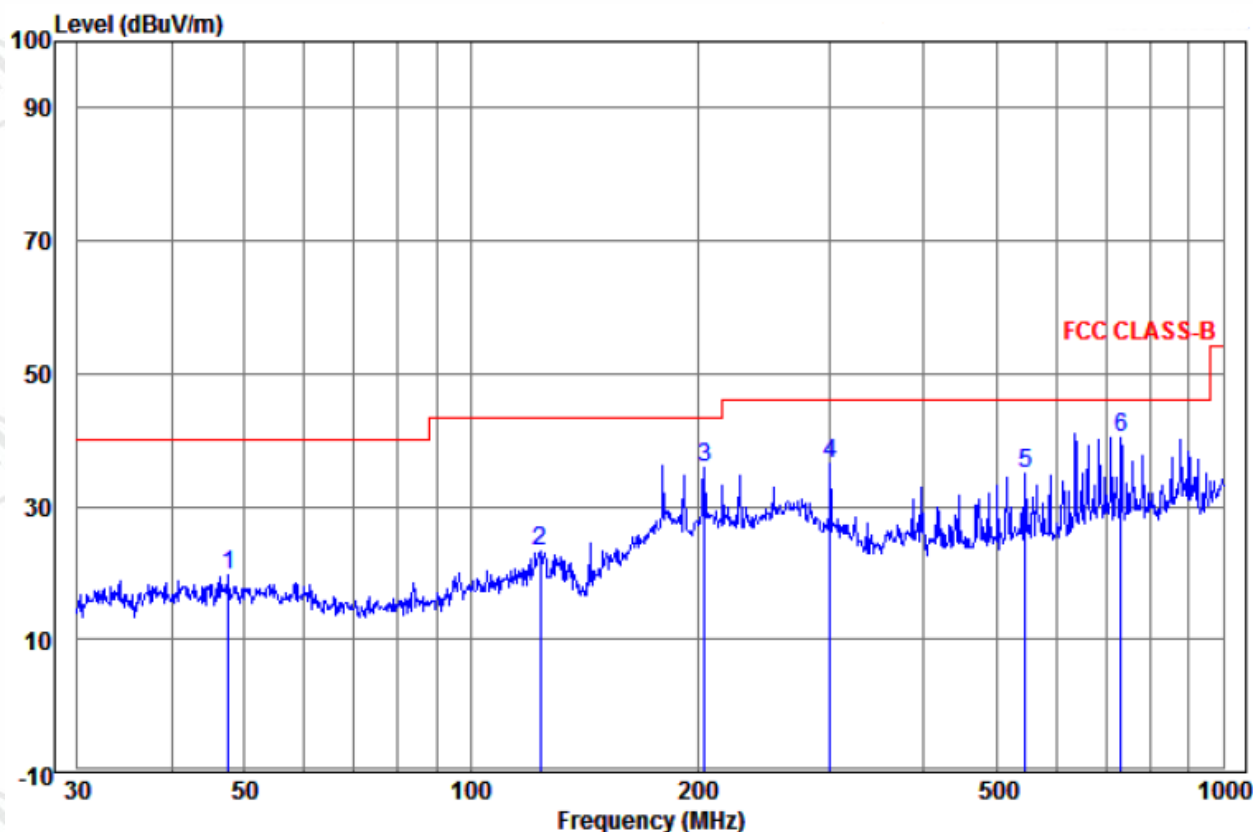
## Appendix I): Radiated Spurious Emissions

Receiver Setup:	Frequency	Detector	RBW	VBW	Remark
	0.009MHz-0.090MHz	Peak	10kHz	30kHz	Peak
	0.009MHz-0.090MHz	Average	10kHz	30kHz	Average
	0.090MHz-0.110MHz	Quasi-peak	10kHz	30kHz	Quasi-peak
	0.110MHz-0.490MHz	Peak	10kHz	30kHz	Peak
	0.110MHz-0.490MHz	Average	10kHz	30kHz	Average
	0.490MHz -30MHz	Quasi-peak	10kHz	30kHz	Quasi-peak
	30MHz-1GHz	Quasi-peak	120kHz	300kHz	Quasi-peak
	Above 1GHz	Peak	1MHz	3MHz	Peak
Peak		1MHz	10Hz	Average	
Test Procedure:					
Below 1GHz test procedure as below:					
<p>a. The EUT was placed on the top of a rotating table 0.8 meters above the ground at a 3 meter semi-anechoic camber. The table was rotated 360 degrees to determine the position of the highest radiation.</p> <p>b. The EUT was set 3 meters away from the interference-receiving antenna, whichwas mounted on the top of a variable-height antenna tower.</p> <p>c. The antenna height is varied from one meter to four meters above the ground to determine the maximum value of the field strength. Both horizontal and vertical polarizations of the antenna are set to make the measurement.</p> <p>d. For each suspected emission, the EUT was arranged to its worst case and then the antenna was tuned to heights from 1 meter to 4 meters (for the test frequency of below 30MHz, the antenna was tuned to heights 1 meter) and the rotatable was turned from 0 degrees to 360 degrees to find the maximum reading.</p> <p>e. The test-receiver system was set to Peak Detect Function and Specified Bandwidth with Maximum Hold Mode.</p> <p>f. If the emission level of the EUT in peak mode was 10dB lower than the limit specified, then testing could be stopped and the peak values of the EUT would be reported. Otherwise the emissions that did not have 10dB margin would be re-tested one by one using peak, quasi-peak or average method as specified and then reported in a data sheet.</p>					
Above 1GHz test procedure as below:					
<p>g. Different between above is the test site, change from Semi- Anechoic Chamber to fully Anechoic Chamber and change form table 0.8 meter to 1.5 meter( Above 18GHz the distance is 1 meter and table is 1.5 meter).</p> <p>h. Test the EUT in the lowest channel ,the middle channel ,the Highest channel</p> <p>i. The radiation measurements are performed in X, Y, Z axis positioning for Transmitting mode, and found the X axis positioning which it is worse case.</p> <p>j. Repeat above procedures until all frequencies measured was complete.</p>					
Limit:	Frequency	Field strength (microvolt/meter)	Limit (dBµV/m)	Remark	Measurement distance (m)
	0.009MHz-0.490MHz	2400/F(kHz)	-	-	300
	0.490MHz-1.705MHz	24000/F(kHz)	-	-	30
	1.705MHz-30MHz	30	-	-	30
	30MHz-88MHz	100	40.0	Quasi-peak	3
	88MHz-216MHz	150	43.5	Quasi-peak	3
	216MHz-960MHz	200	46.0	Quasi-peak	3
	960MHz-1GHz	500	54.0	Quasi-peak	3
	Above 1GHz	500	54.0	Average	3
	Note: 15.35(b), Unless otherwise specified, the limit on peak radio frequency emissions is 20dB above the maximum permitted average emission limit applicable to the equipment under test. This peak limit applies to the total peak emission level radiated by the device.				

**Radiated Spurious Emissions test Data:**  
**Radiated Emission below 1GHz**

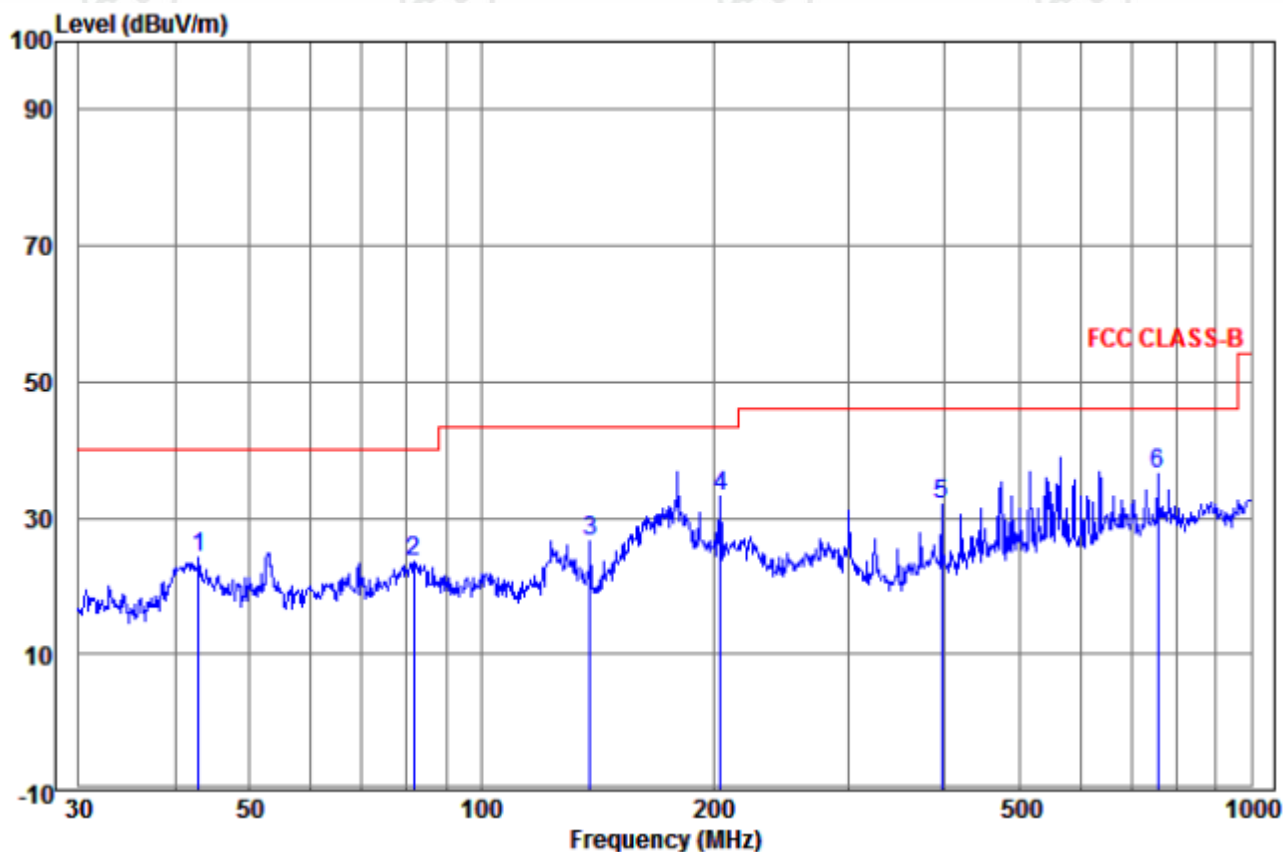
30MHz~1GHz (QP)

Test mode:	Transmitting	Horizontal
------------	--------------	------------



	Ant	Cable	Read	Limit	Over			
Freq	Factor	Loss	Level	Level	Line	Limit	Pol/Phase	Remark
MHz	dB/m	dB	dBuV	dBuV/m	dBuV/m	dB		
1	47.659	14.91	1.21	3.58	19.70	40.00	-20.30	Horizontal
2	123.699	11.36	1.58	10.26	23.20	43.50	-20.30	Horizontal
3	204.238	11.68	2.22	21.82	35.72	43.50	-7.78	Horizontal
4	300.367	13.51	2.38	20.42	36.31	46.00	-9.69	Horizontal
5	545.183	18.58	3.20	13.27	35.05	46.00	-10.95	Horizontal
6 pp	731.920	20.89	3.97	15.64	40.50	46.00	-5.50	Horizontal

Test mode:	Transmitting	Vertical
------------	--------------	----------



	Ant Freq	Cable Factor	Read Loss	Level	Level	Limit	Over	Pol/Phase	Remark
	MHz	dB/m	dB	dBuV	dBuV/m	dBuV/m	dB		
1	42.900	14.48	0.80	8.77	24.05	40.00	-15.95	Vertical	
2	81.783	9.09	1.57	13.02	23.68	40.00	-16.32	Vertical	
3	138.387	10.40	1.58	14.58	26.56	43.50	-16.94	Vertical	
4	204.238	11.68	2.22	19.40	33.30	43.50	-10.20	Vertical	
5	396.242	16.19	2.79	12.87	31.85	46.00	-14.15	Vertical	
6 pp	755.387	21.07	3.99	11.50	36.56	46.00	-9.44	Vertical	

**Transmitter Emission above 1GHz**

Worse case mode:		GFSK		Test channel:		Lowest	Remark: Peak		
Frequency (MHz)	Antenna Factor (dB/m)	Cable Loss (dB)	Preamplifier Gain (dB)	Read Level (dBμV)	Level (dBμV/m)	Limit Line (dBμV/m)	Over Limit (dB)	Result	Antenna Polaxis
1159.096	30.13	2.47	35.01	43.52	41.11	74	-32.89	Pass	H
1621.985	31.10	2.94	34.57	43.41	42.88	74	-31.12	Pass	H
3498.735	33.17	5.52	34.55	42.27	46.41	74	-27.59	Pass	H
4804.000	34.69	5.11	34.35	42.29	47.74	74	-26.26	Pass	H
7206.000	36.42	6.66	34.90	40.37	48.55	74	-25.45	Pass	H
9608.000	37.88	7.73	35.08	37.38	47.91	74	-26.09	Pass	H
1153.210	30.11	2.46	35.01	45.13	42.69	74	-31.31	Pass	V
1823.477	31.43	3.10	34.42	45.54	45.65	74	-28.35	Pass	V
3342.042	33.30	5.55	34.54	44.02	48.33	74	-25.67	Pass	V
4804.000	34.69	5.11	34.35	42.54	47.99	74	-26.01	Pass	V
7206.000	36.42	6.66	34.90	39.97	48.15	74	-25.85	Pass	V
9608.000	37.88	7.73	35.08	37.38	47.91	74	-26.09	Pass	V

Worse case mode:		GFSK		Test channel:		Middle	Remark: Peak		
Frequency (MHz)	Antenna Factor (dB/m)	Cable Loss (dB)	Preamplifier Gain (dB)	Read Level (dBμV)	Level (dBμV/m)	Limit Line (dBμV/m)	Over Limit (dB)	Result	Antenna Polaxis
1052.229	29.85	2.33	35.13	44.80	41.85	74	-32.15	Pass	H
1668.044	31.18	2.98	34.54	46.38	46.00	74	-28.00	Pass	H
3598.087	33.09	5.51	34.56	43.50	47.54	74	-26.46	Pass	H
4880.000	34.85	5.08	34.33	42.57	48.17	74	-25.83	Pass	H
7320.000	36.43	6.77	34.90	41.65	49.95	74	-24.05	Pass	H
9760.000	38.05	7.60	35.05	38.56	49.16	74	-24.84	Pass	H
1121.367	30.03	2.42	35.05	44.85	42.25	74	-31.75	Pass	V
1651.146	31.15	2.96	34.55	44.01	43.57	74	-30.43	Pass	V
3376.244	33.27	5.55	34.54	42.63	46.91	74	-27.09	Pass	V
4880.000	34.85	5.08	34.33	42.01	47.61	74	-26.39	Pass	V
7320.000	36.43	6.77	34.90	40.24	48.54	74	-25.46	Pass	V
9760.000	38.05	7.60	35.05	38.25	48.85	74	-25.15	Pass	V



Worse case mode:		GFSK		Test channel:		Highest	Remark: Peak		
Frequency (MHz)	Antenna Factor (dB/m)	Cable Loss (dB)	Preamplifier Gain (dB)	Read Level (dBμV)	Level (dBμV/m)	Limit Line (dBμV/m)	Over Limit (dB)	Result	Antenna Polaxis
1017.978	29.75	2.28	35.18	51.02	47.87	74	-26.13	Pass	H
1502.732	30.88	2.83	34.67	45.47	44.51	74	-29.49	Pass	H
3795.660	32.95	5.47	34.58	43.15	46.99	74	-27.01	Pass	H
4960.000	35.02	5.05	34.31	41.75	47.51	74	-26.49	Pass	H
7440.000	36.45	6.88	34.90	40.43	48.86	74	-25.14	Pass	H
9920.000	38.22	7.47	35.02	36.35	47.02	74	-26.98	Pass	H
1521.981	30.91	2.85	34.65	45.01	44.12	74	-29.88	Pass	V
3480.968	33.19	5.53	34.55	44.50	48.67	74	-25.33	Pass	V
4960.000	35.02	5.05	34.31	41.19	46.95	74	-27.05	Pass	V
6379.864	36.10	7.05	34.54	40.19	48.80	74	-25.20	Pass	V
7440.000	36.45	6.88	34.90	39.27	47.70	74	-26.30	Pass	V
9920.000	38.22	7.47	35.02	36.91	47.58	74	-26.42	Pass	V

**Note:**

1) The field strength is calculated by adding the Antenna Factor, Cable Factor & Preamplifier. The basic equation with a sample calculation is as follows:

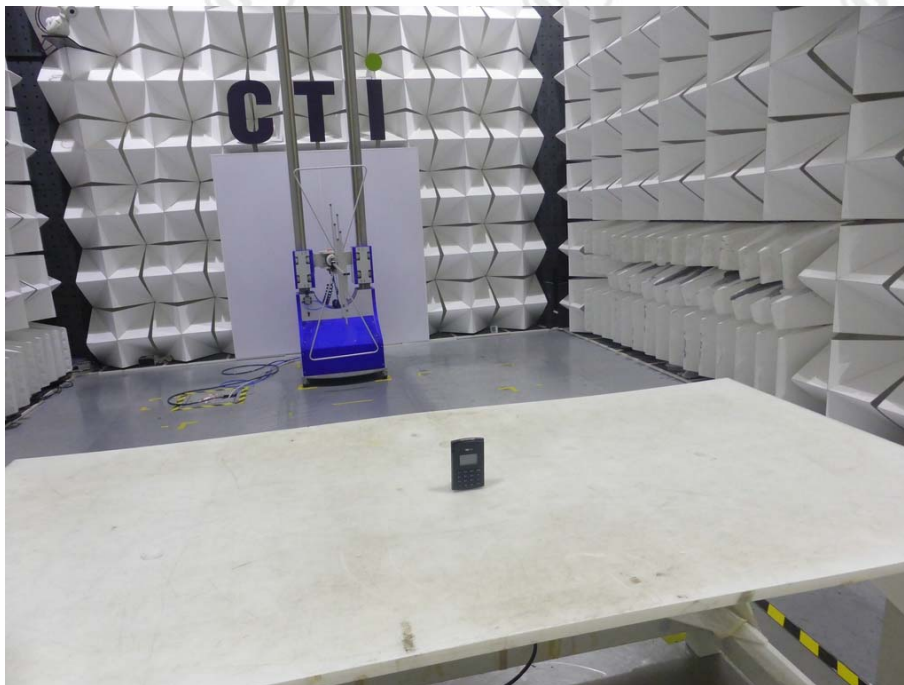
Final Test Level = Receiver Reading - Correct Factor

Correct Factor = Preamplifier Factor - Antenna Factor - Cable Factor

2) Scan from 9kHz to 25GHz, the disturbance above 13GHz and below 30MHz was very low, and the above harmonics were the highest point could be found when testing, so only the above harmonics had been displayed. The amplitude of spurious emissions from the radiator which are attenuated more than 20dB below the limit need not be reported.

## PHOTOGRAPHS OF TEST SETUP

Test mode No.: WisePad 2



**Radiated spurious emission Test Setup-1(Below 1GHz)**



**Radiated spurious emission Test Setup-2(Above 1GHz)**



**Conducted Emissions Test Setup**



## PHOTOGRAPHS OF EUT Constructional Details

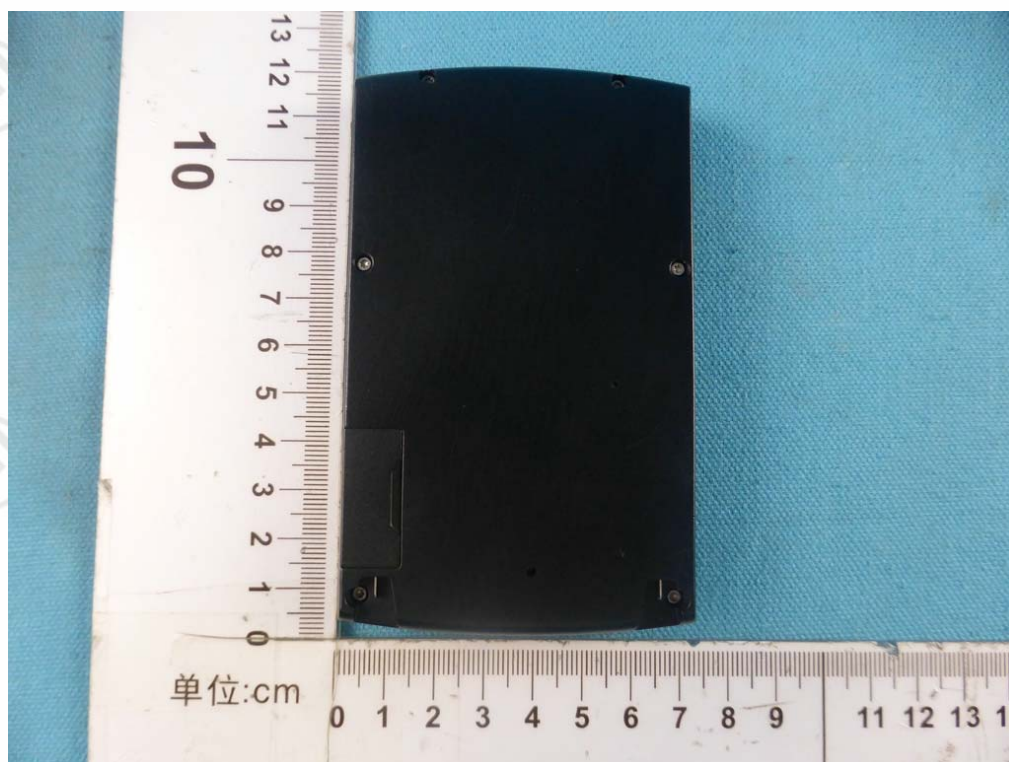
Test mode No.: WisePad 2



View of Product-1



View of Product-2



View of Product-3



View of Product-4





View of Product-5



View of Product-6



View of Product-7



View of Product-8

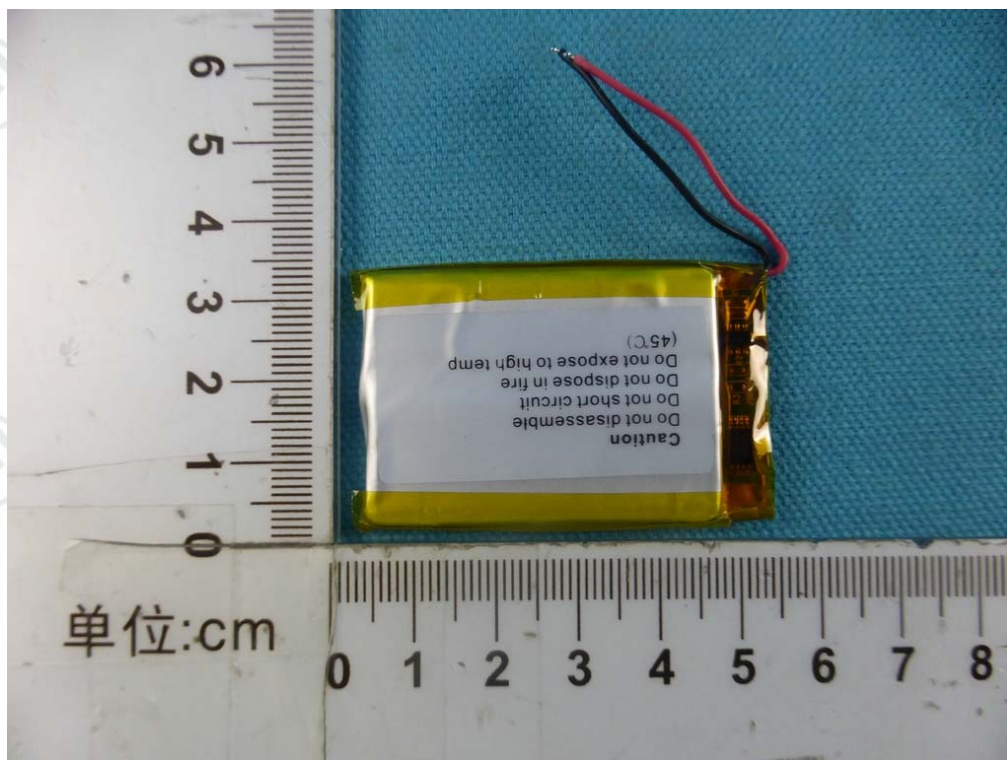




View of Product-9



View of Product-10



View of Product-11

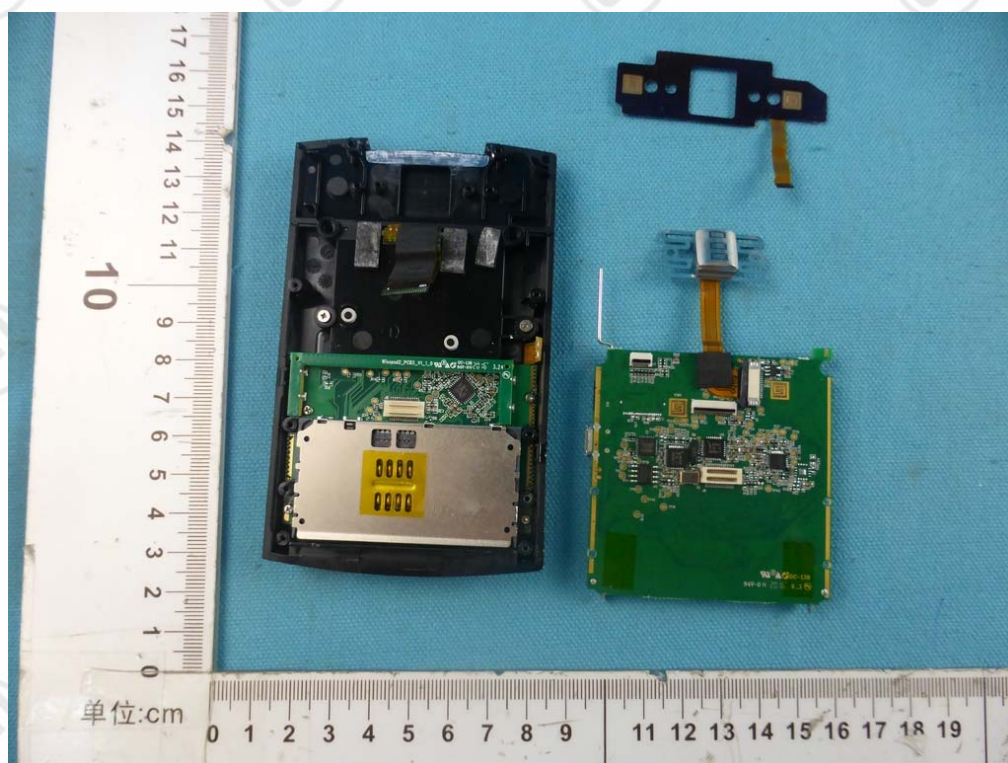


View of Product-12



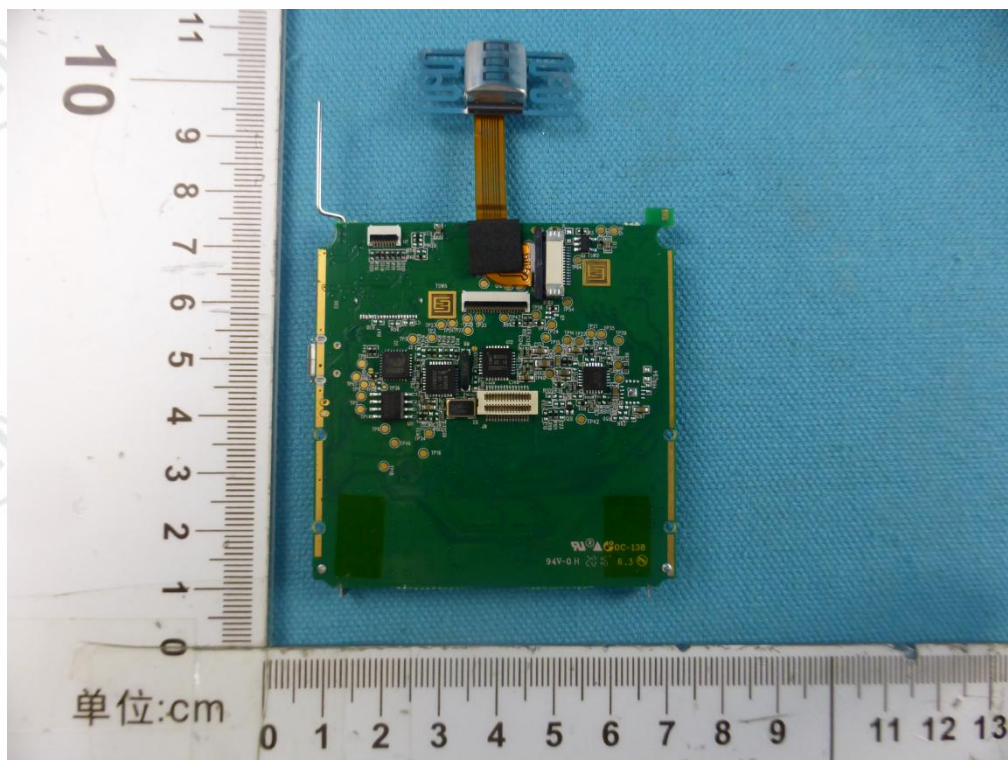


View of Product-13

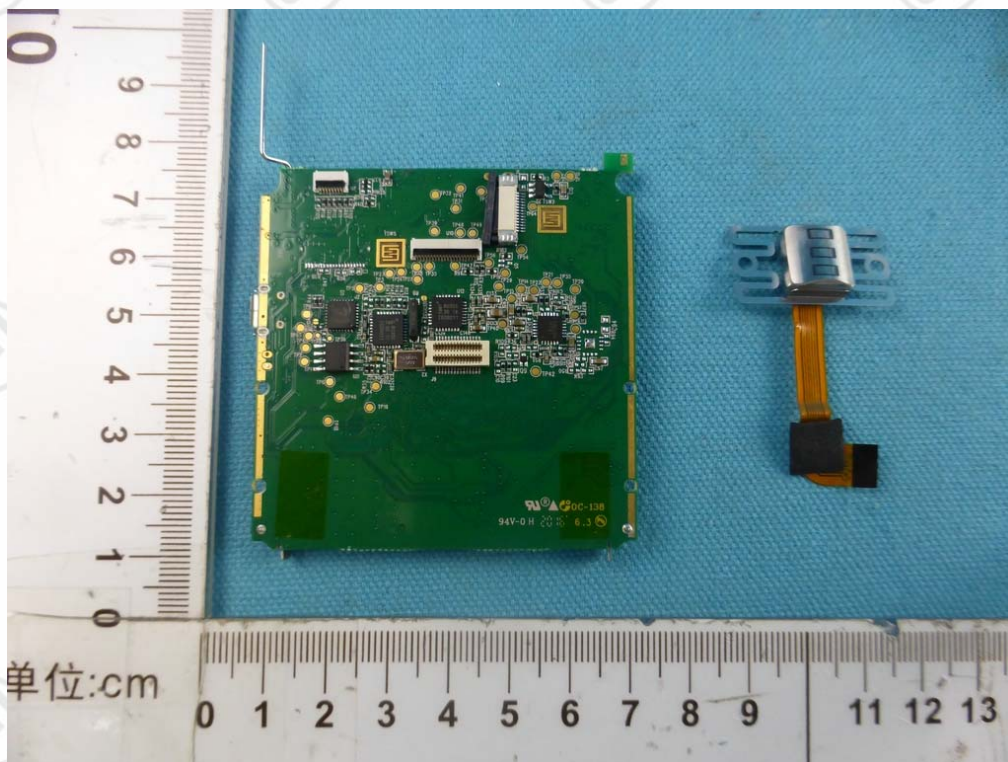


View of Product-14



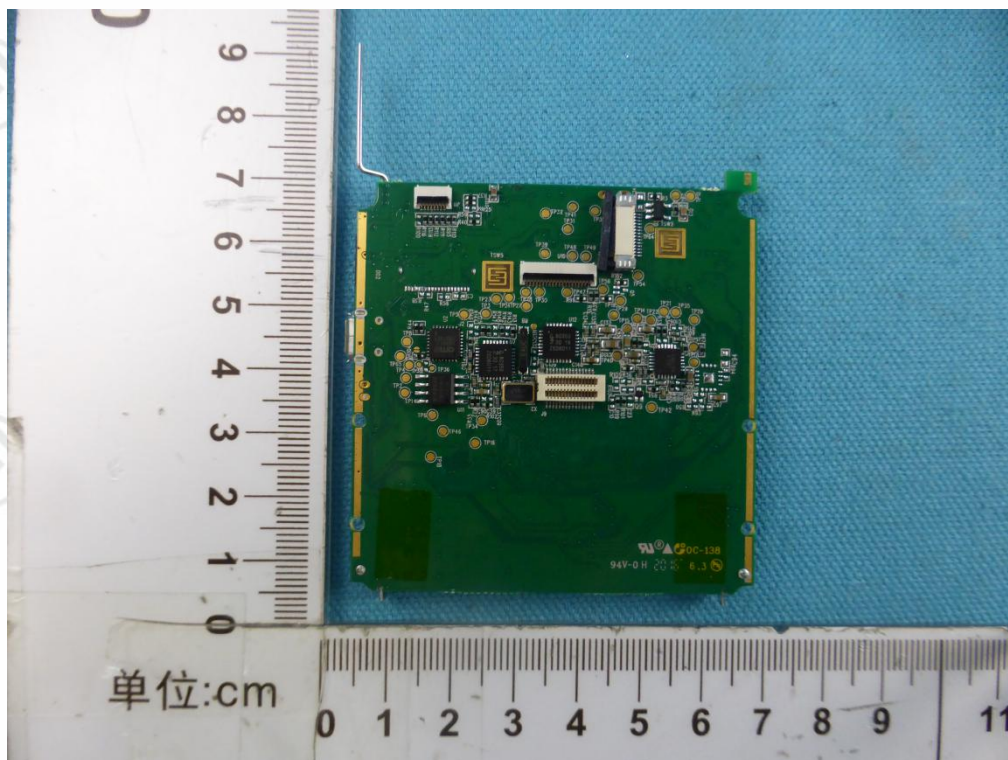


View of Product-15

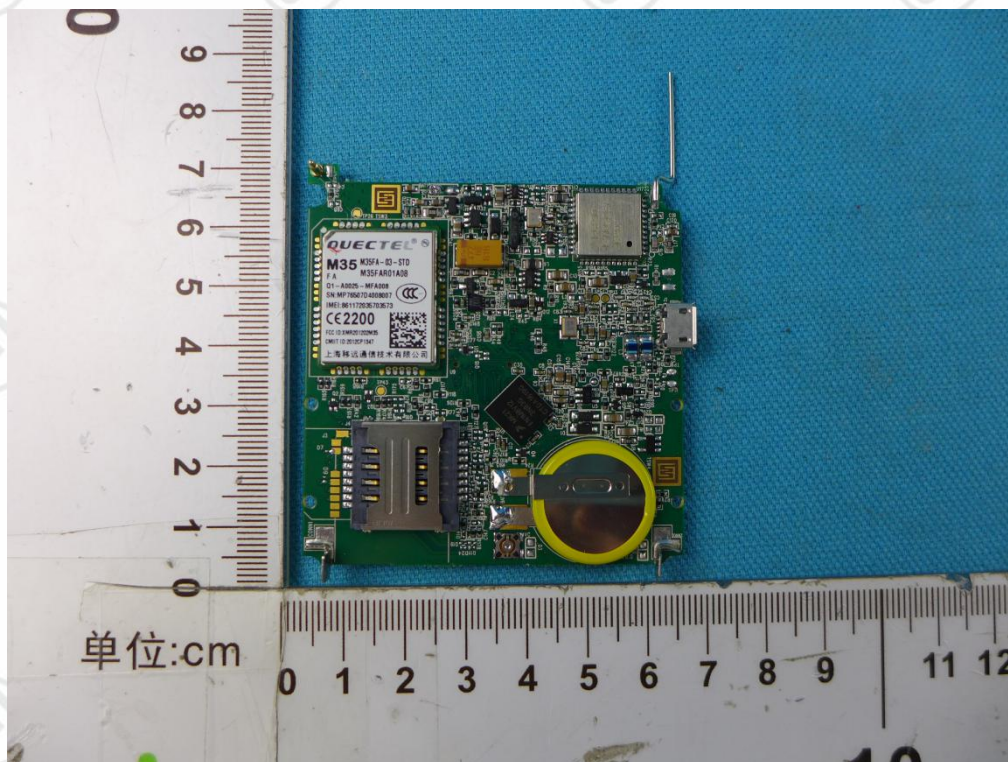


View of Product-16



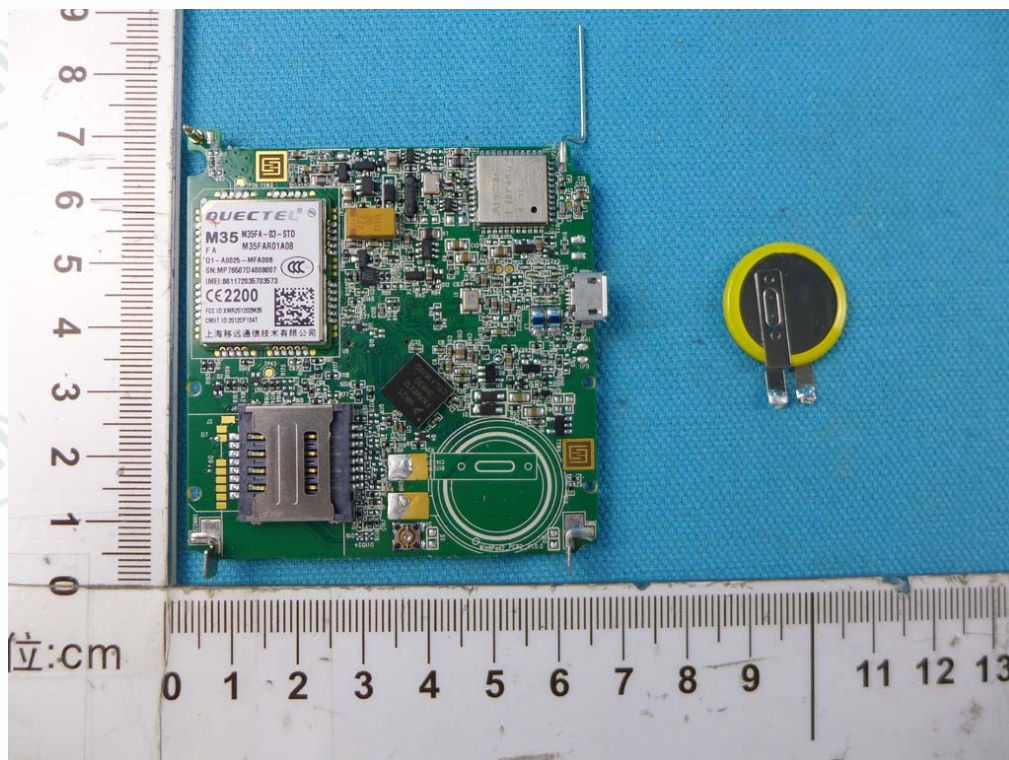


View of Product-17

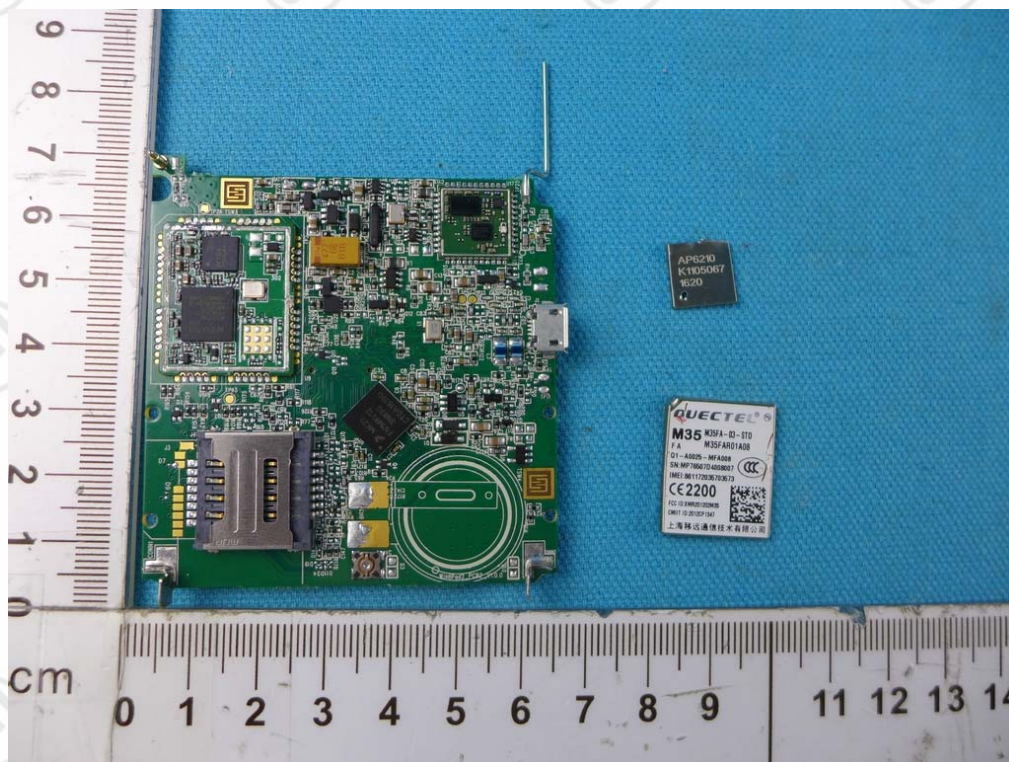


View of Product-18



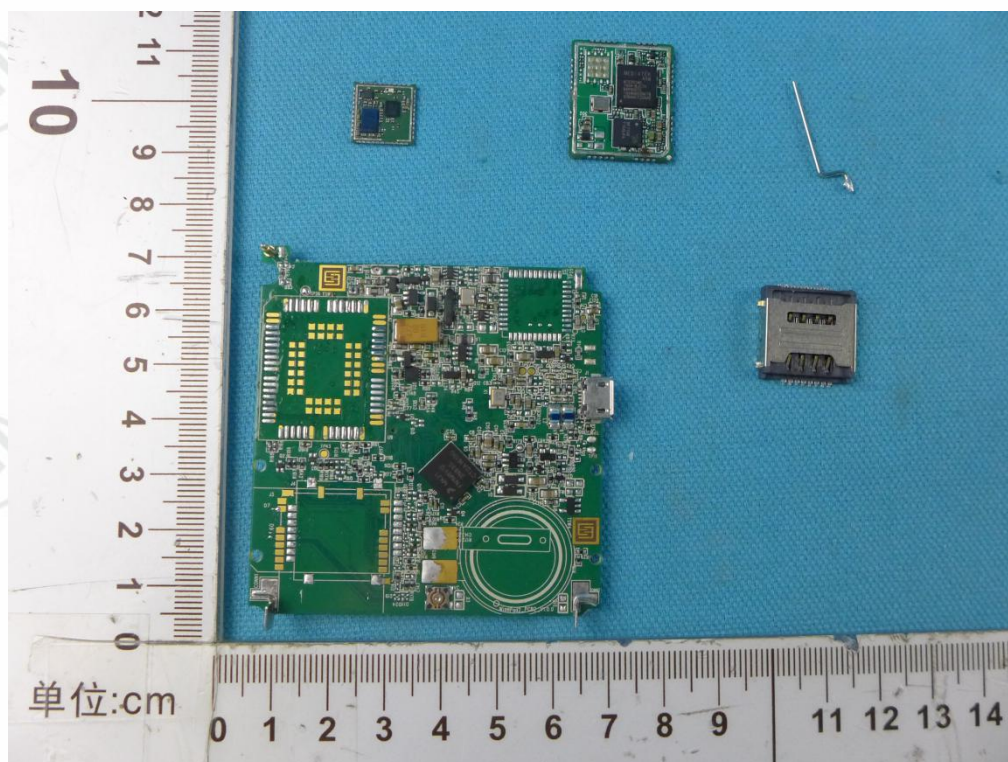


View of Product-19

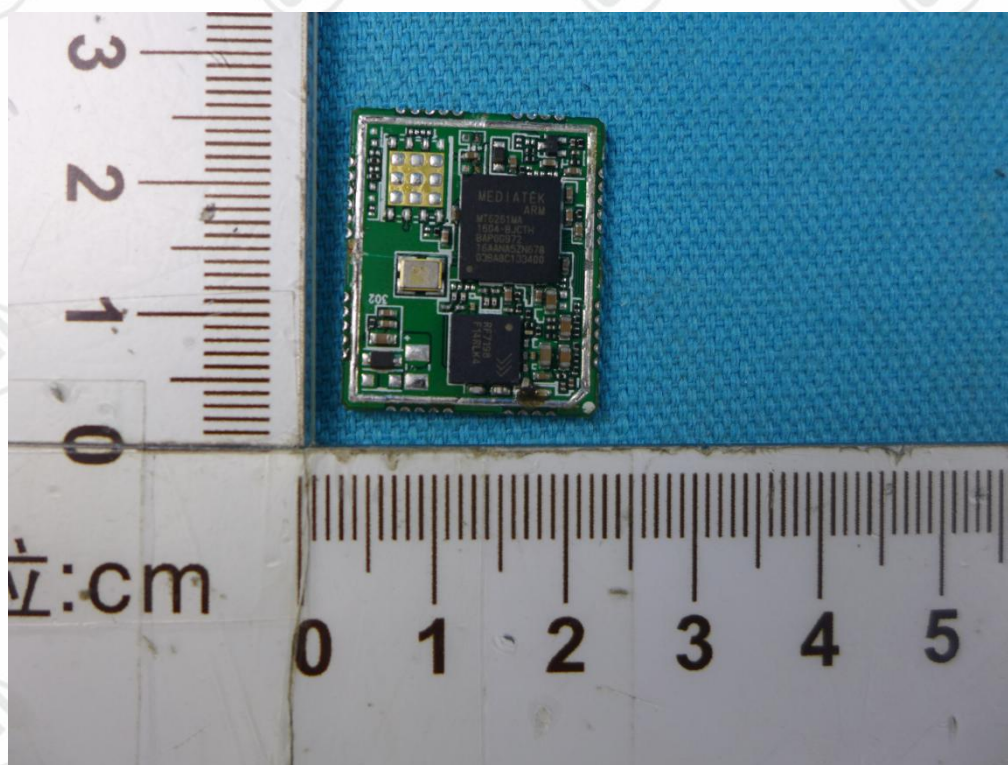


View of Product-20

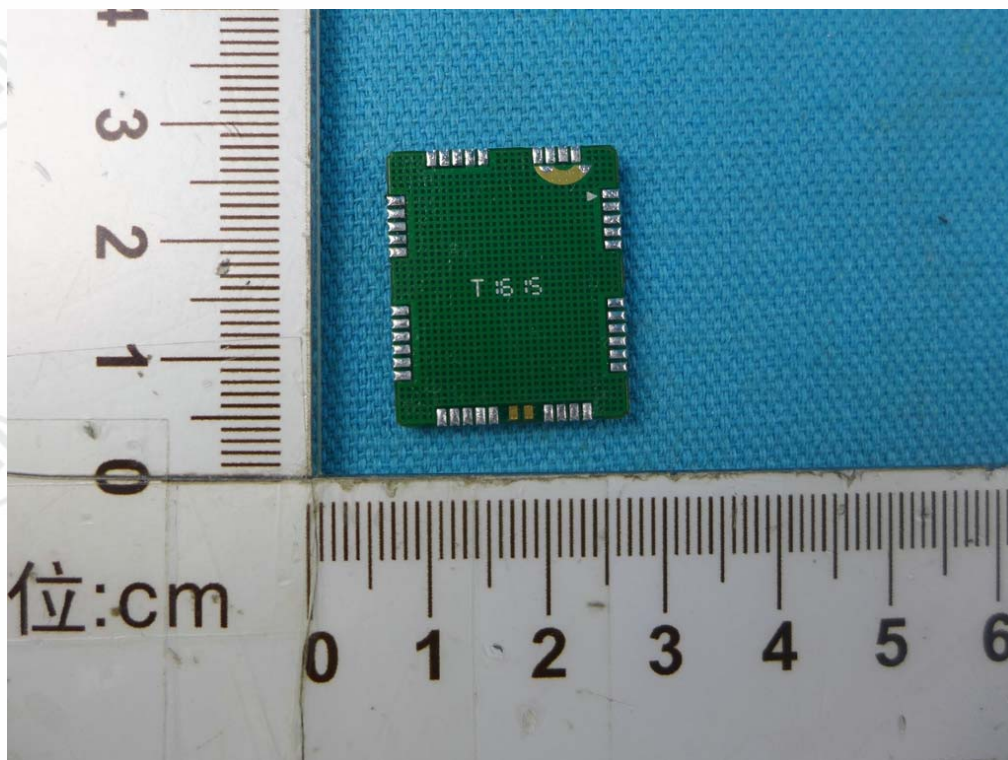




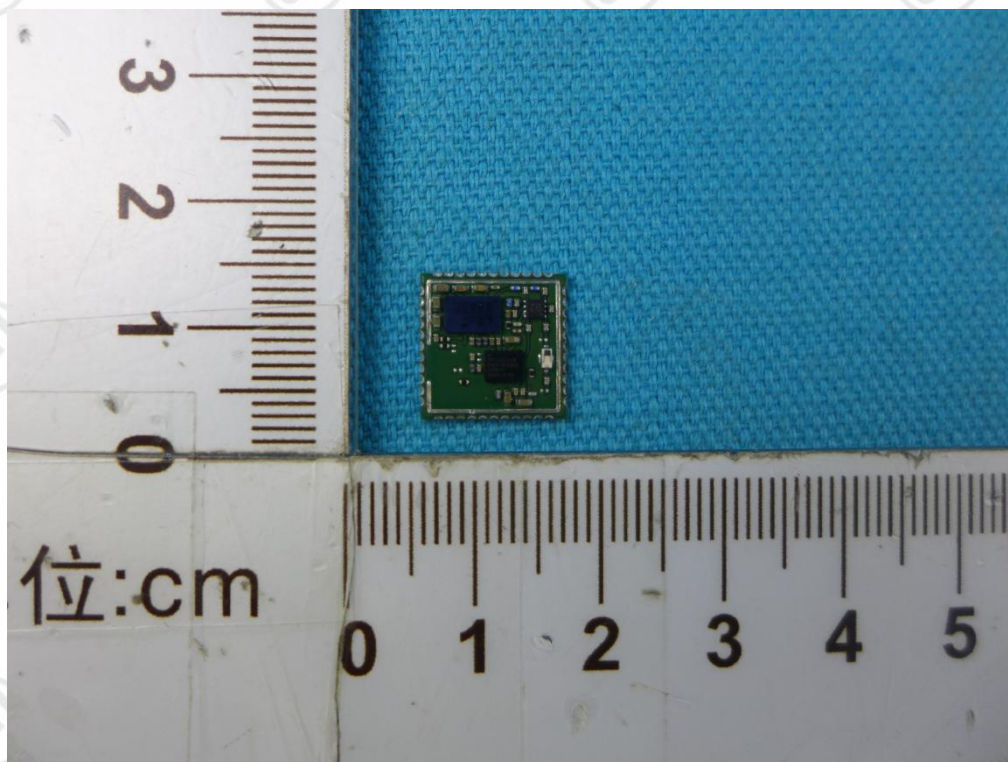
View of Product-21



View of Product-22

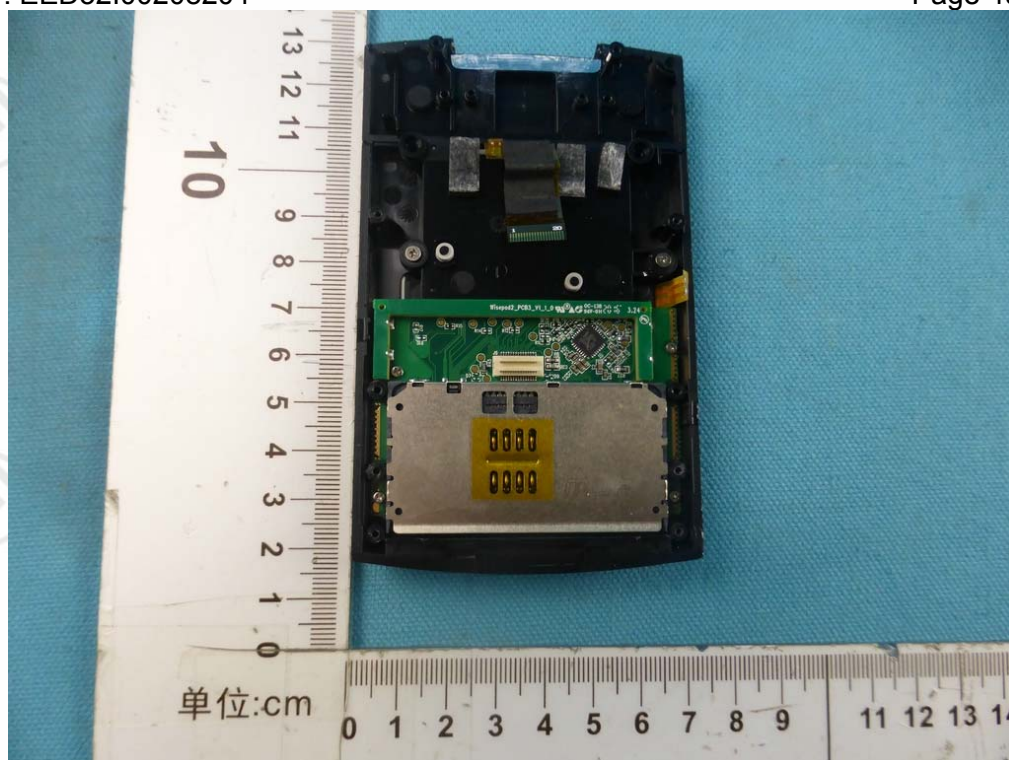


View of Product-23

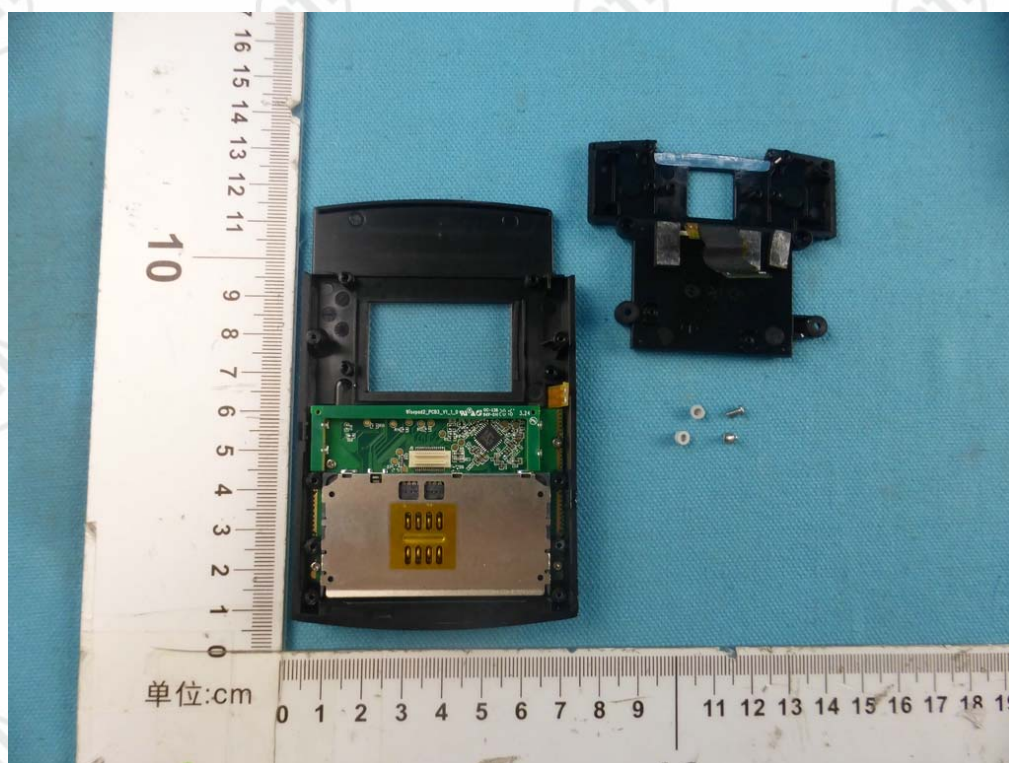


View of Product-24

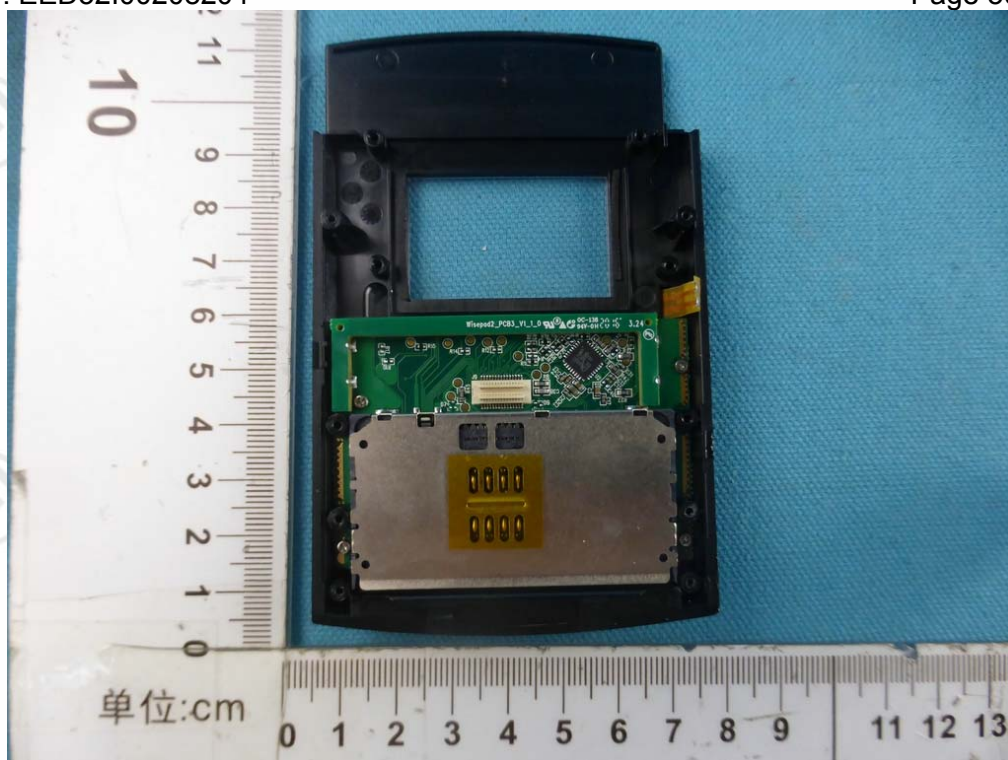




View of Product-25



View of Product-26

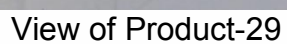


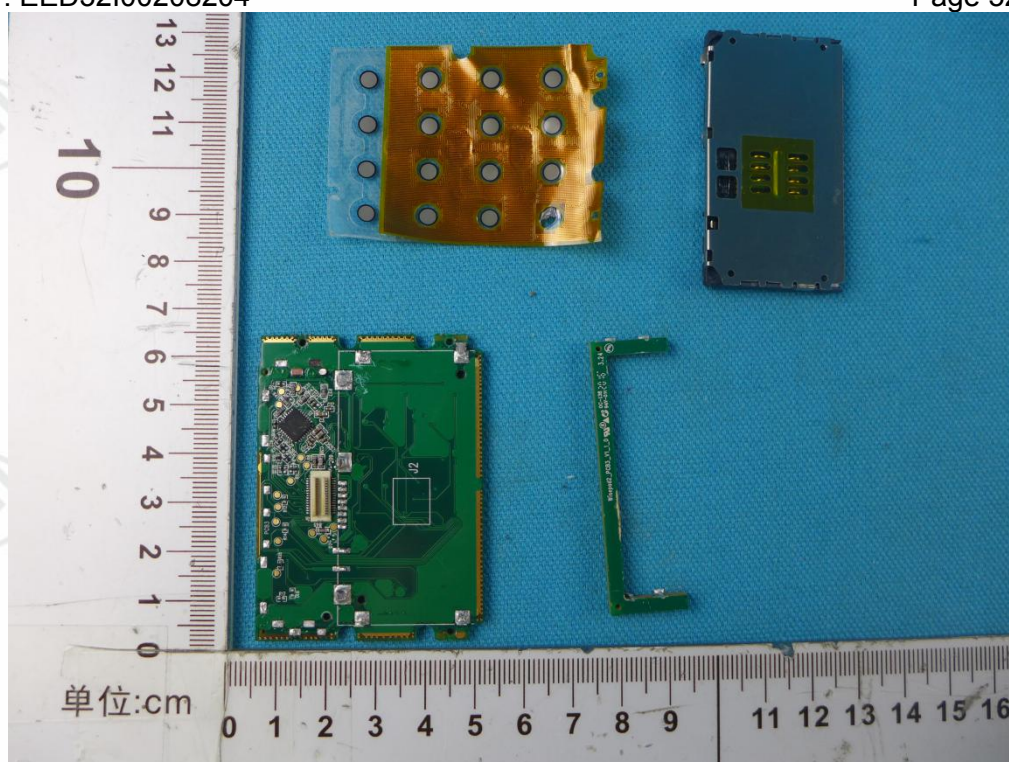
View of Product-27



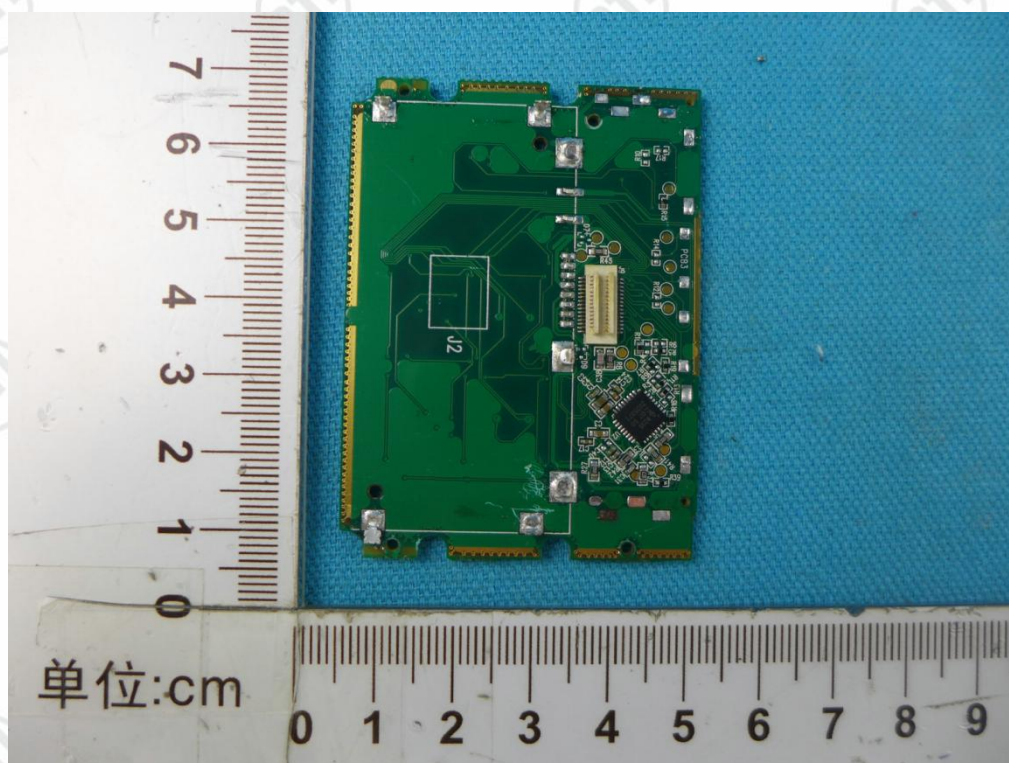
View of Product-28





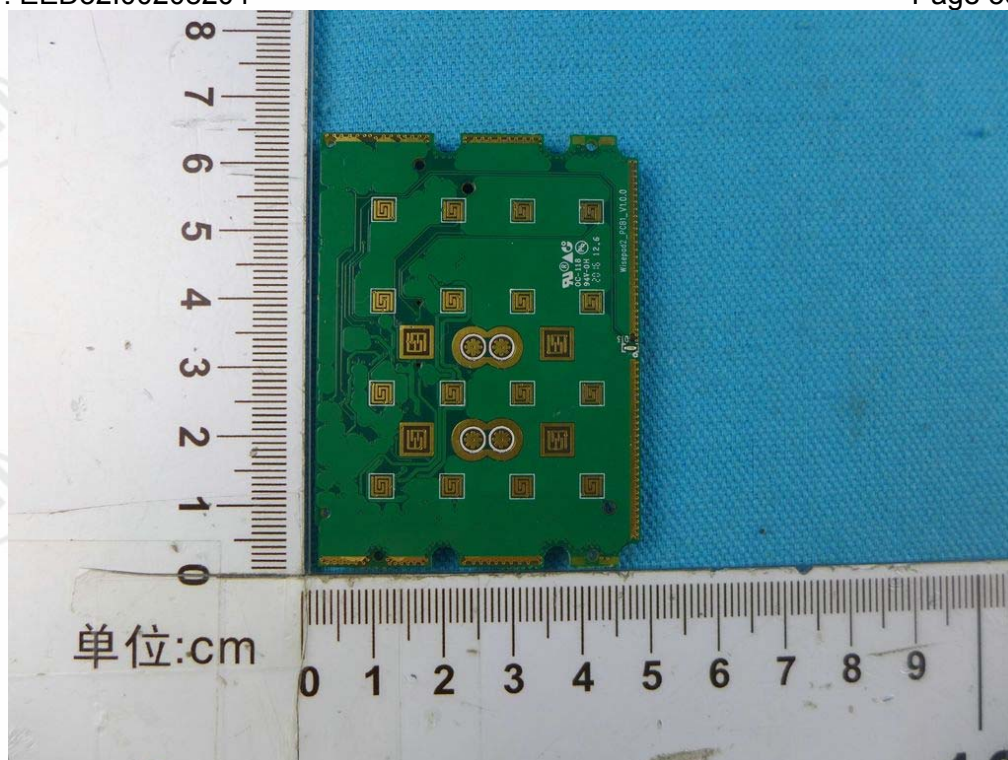


View of Product-31



View of Product-32





View of Product-33

\*\*\* End of Report \*\*\*

The test report is effective only with both signature and specialized stamp, The result(s) shown in this report refer only to the sample(s) tested. Without written approval of CTI, this report can't be reproduced except in full.