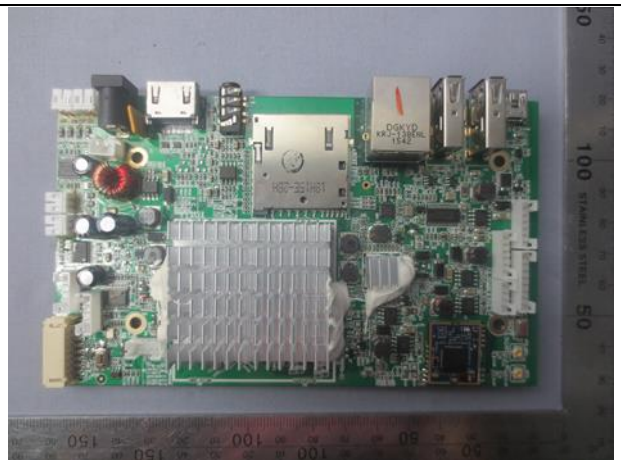


Test data re-use explanation

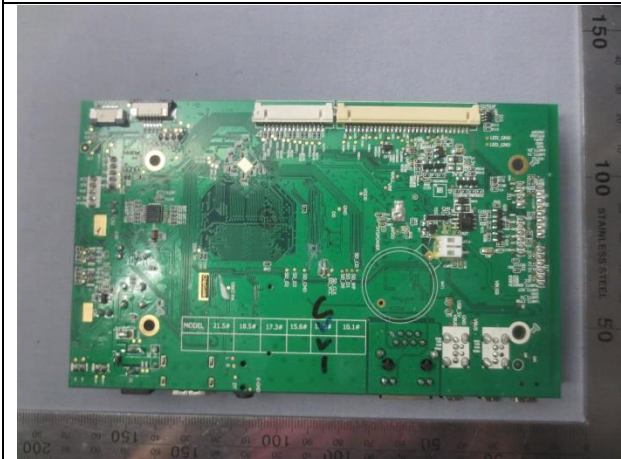
Photo of limited modular (FCC ID: 2AB6Z-1859ATMBA-V2)



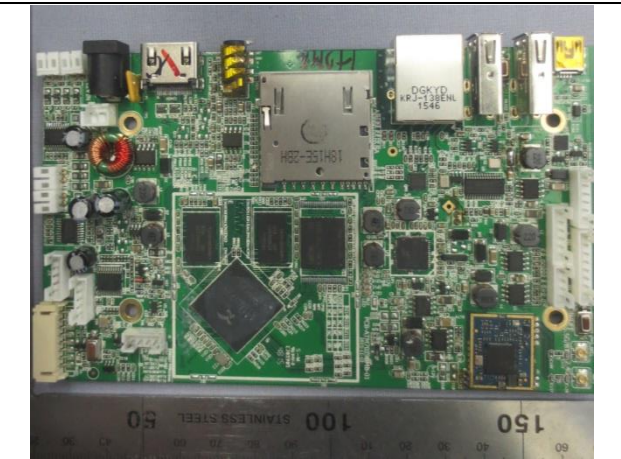
Limited modular with antenna



Top view of limited modular



Bottom view of limited modular



Radiator removed

Photo of the limited modular in host

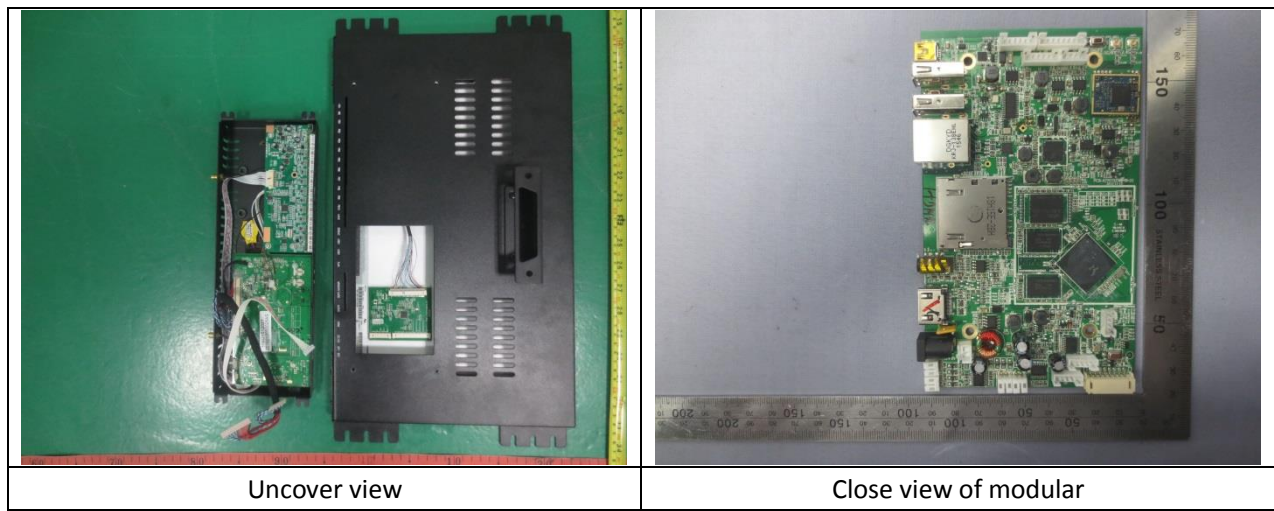
Product: 17.3"Quad Core Media Player Slim Housing (Touch) (Project: CCISE1605037)



Top view with antenna



Bottom view



The certified limited modular with approved antenna was integrated in the host device, the test data by conducted method, such as conducted output power, PSD, OBW, conducted spurious emissions, conducted band edge and frequency stability of the limited modular shall be re-used, and all radiated test items, such as radiated spurious emissions (below and above 1 GHz), radiated band edge, and AC mains conducted emission shall be re-tested on the host device.

Details as below:

Equipment Class	Reference FCC ID	Folder Test / RF Exposure	Report Title/Section
DSS	2AB6Z-1859ATMBA-V2	CCISE160503701	CCISE160307701/Section 6.3~section 6.8 and section 6.9.1 and section 6.10.1
DTS	2AB6Z-1859ATMBA-V2	CCISE160503702	CCISE160307702/section 6.3~6.5 and section 6.6.1 and section 6.7.1
DTS	2AB6Z-1859ATMBA-V2	CCISE160503703	CCISE160307703/ section 6.3~6.5 and section 6.6.1 and section 6.7.1
UNII	2AB6Z-1859ATMBA-V2	CCISE160503704	CCISE160307704/ section 6.3~6.5 and section 6.8