

1. Components

2. Hardware installation

3. App installation

IOS
ANDROID

4. Bluetooth pairing and connection

IOS
ANDROID

5. Listen FM

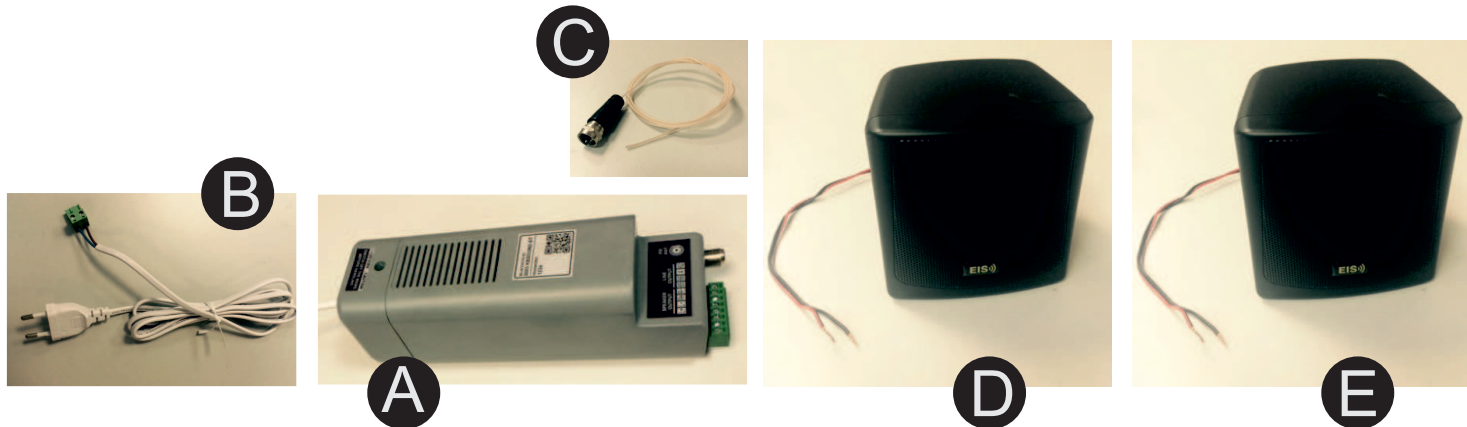
6. Listen Bluetooth streaming audio

7. Annex: Settings and Bluetooth naming



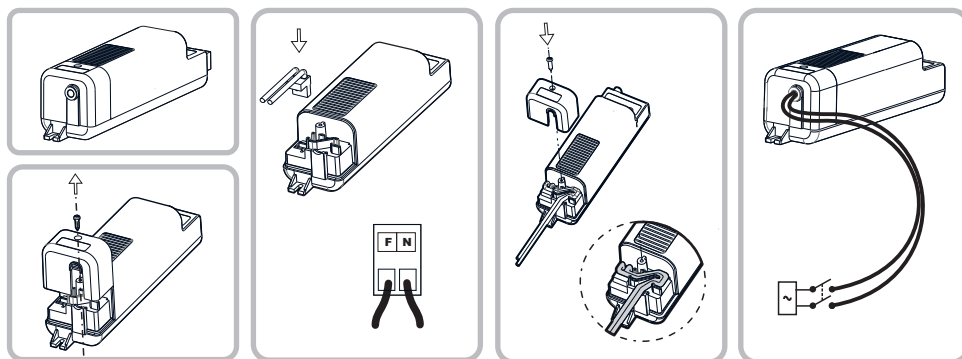
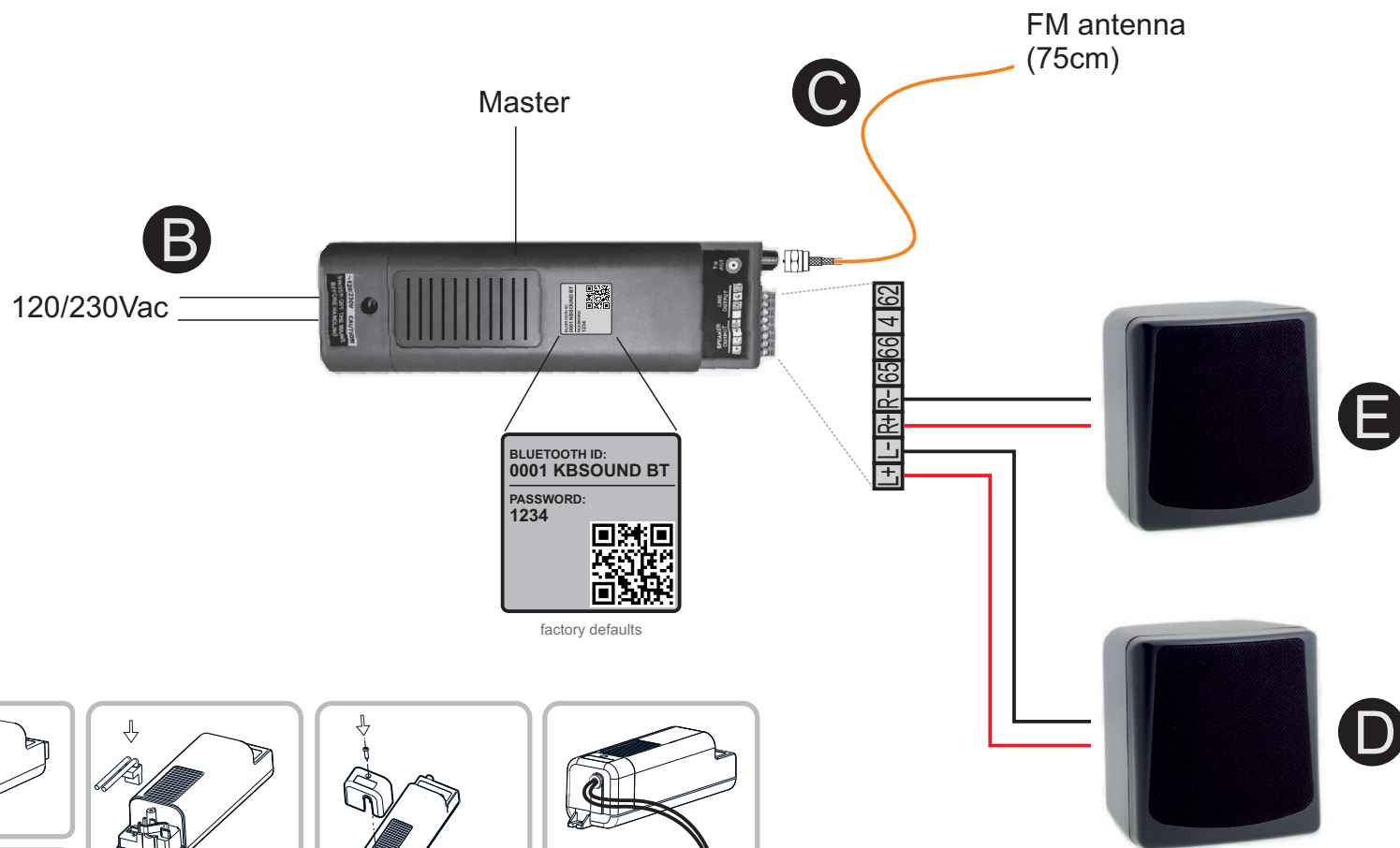
1. Components

- (A) Master electronic module
- (B) mains cable
- (C) FM antenna
- (D) and (E) speakers and audio cable



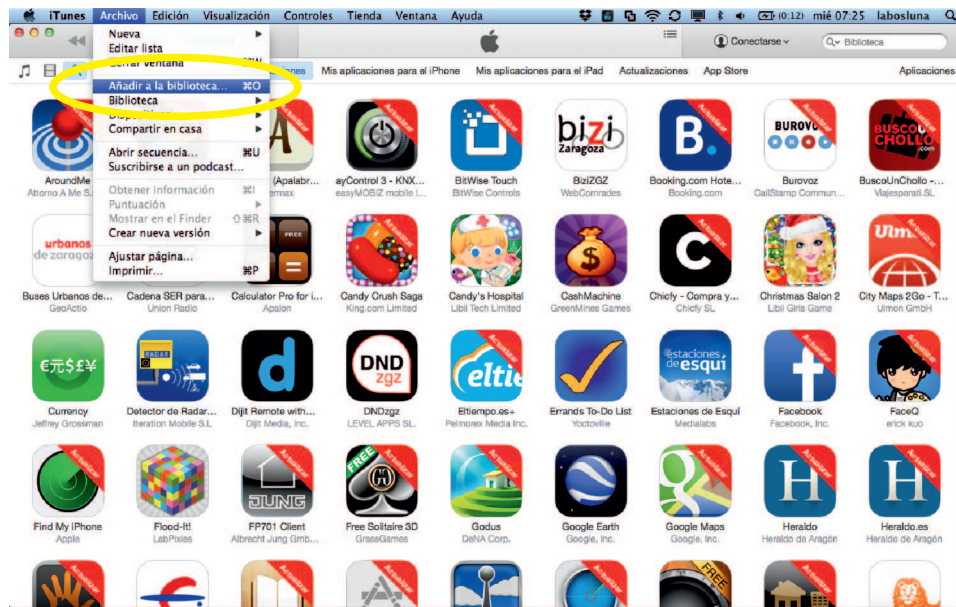
2. Hardware installation

1. connect the speakers (D) and (E) to terminals L+, L- R+, R- (note: terminals 65,66,4,62 unconnected)
2. connect the FM antenna (C) to the FM connector
3. connect the cable (B) to the mains (120/230Vac)

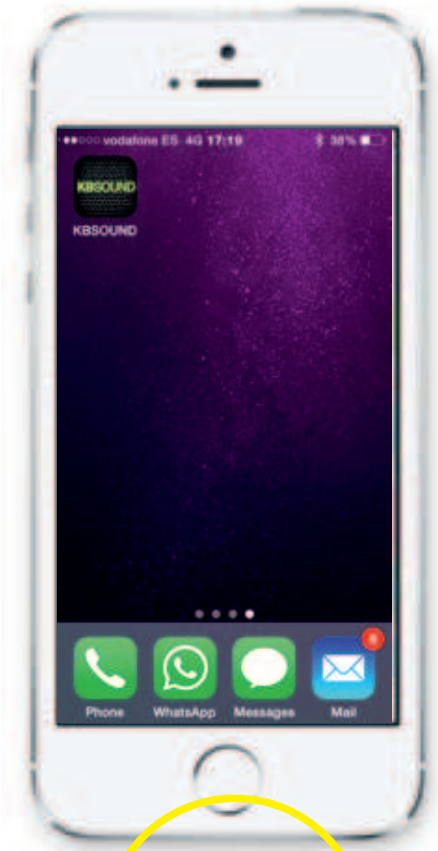
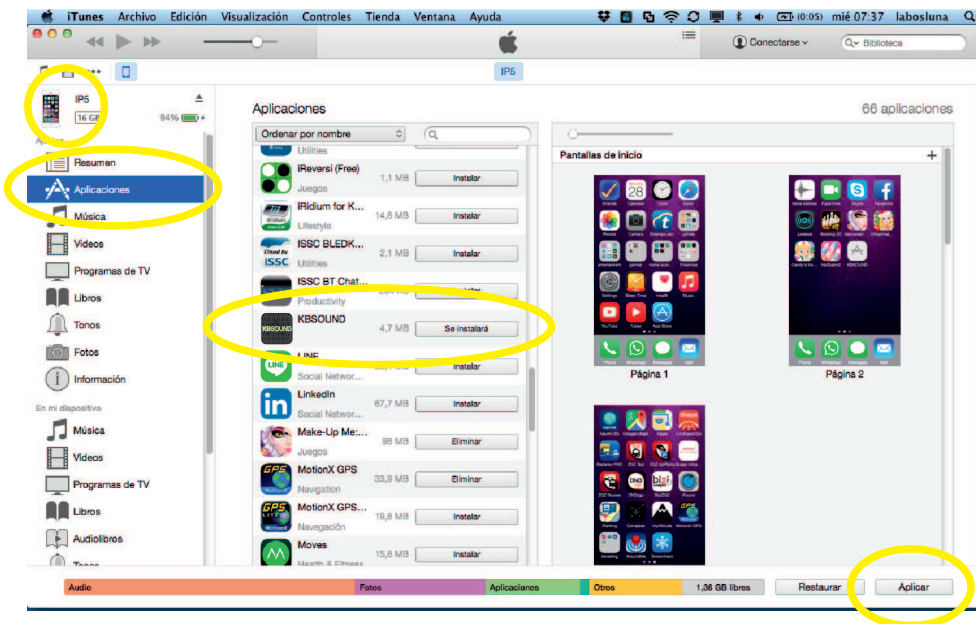


3.1. App installation (IOS)

1. open iTunes in the computer
2. in iTunes: if the App KBSOUND is already in iTunes library, delete it
3. in iTunes: add the App file (KBSOUND-IOS-V0.XX .ipa) to iTunes library



4. in the smartphone: if the App is already installed in the smartphone, uninstall it
5. connect the smartphone to the computer
6. in iTunes: select the smartphone
7. in iTunes: select Aplicaciones
8. in iTunes: select the App KBSOUND to be installed to the smartphone
9. in iTunes: apply changes
10. when finish, be sure that the app KBSOUND has been installed in the smartphone
11. IMPORTANT: disconnect the smartphone from the computer



3.2. App installation (ANDROID)

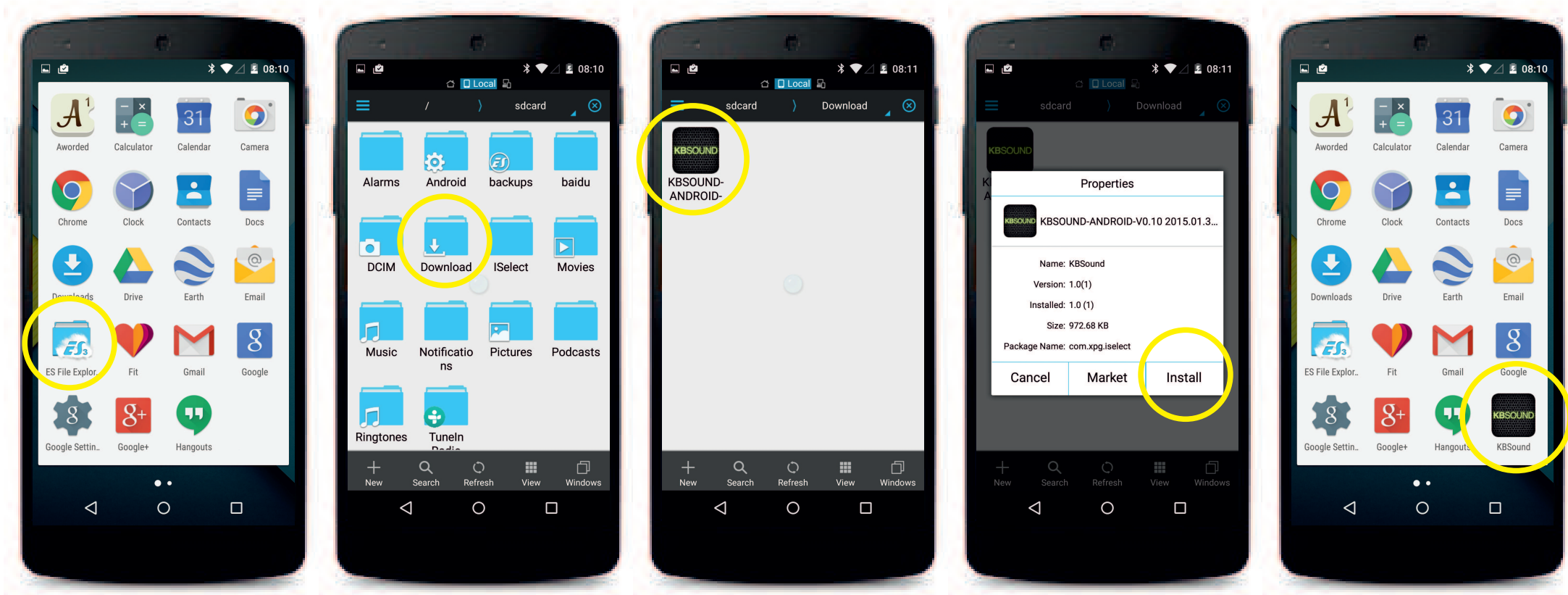
the following process is just an example (Google Nexus 5 / Android 5.0.1) since different smartphones have different configurations for different brands, models and versions

1. connect the smartphone to the PC
2. in the PC: upload the the App file (KBSOUND-ANDROID-V0.XX .apk) to the folder DOWNLOADS in the smartphone
3. disconnect the smartphone from the computer



4. in the smartphone: go to any file explorer and run the App file recently downloaded
5. when finish, be sure that the app KBSOUND has been installed in the smartphone

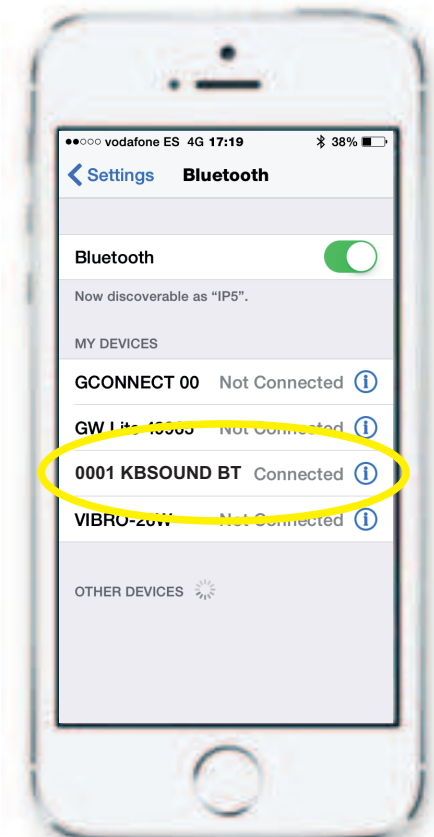
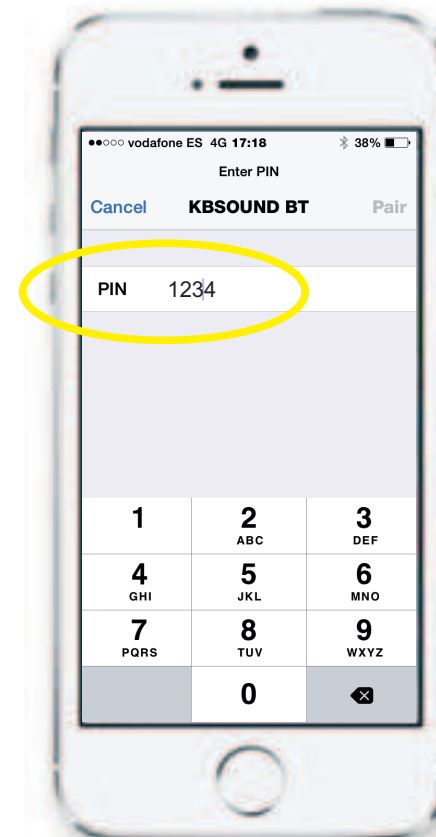
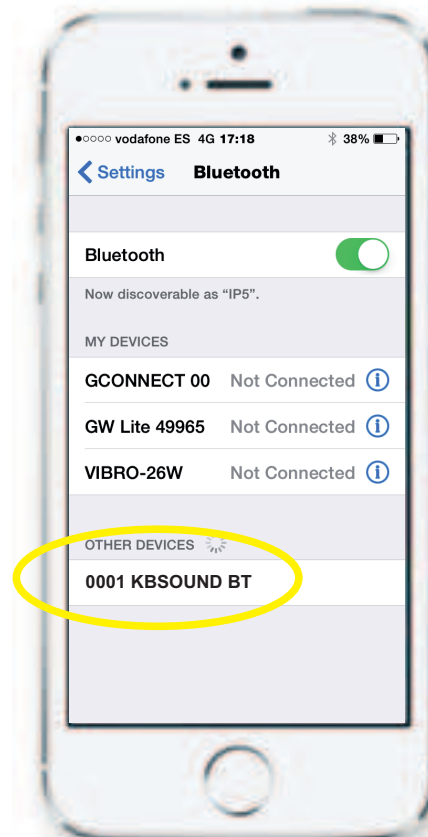
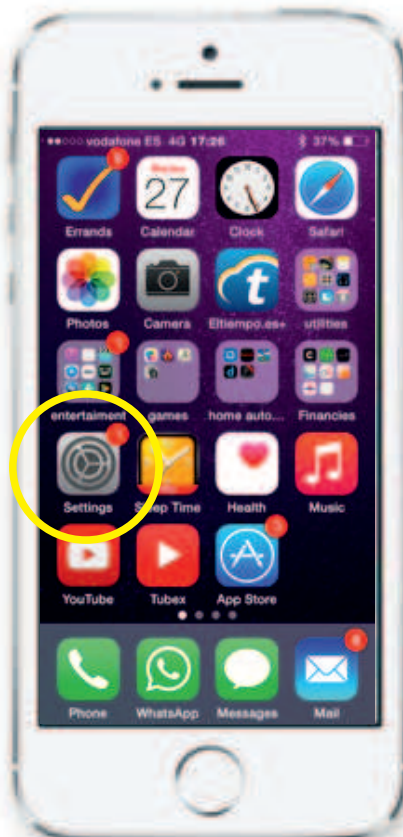
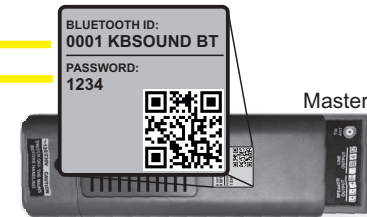
(note: if any issue, desinstall previous version of the App from the settings menu)



4.1. Bluetooth pairing and connection (IOS)

before operating the KBSOUND App it is necessary to be correctly paired and connected with the Master

1. go to IOS Bluetooth settings menu
2. select the Master Bluetooth ID (e.g. **0001 KBSOUND BT**)
3. introduce the password (e.g. **1234**)
4. check that the Master (e.g. **0001 KBSOUND BT**) is correctly connected

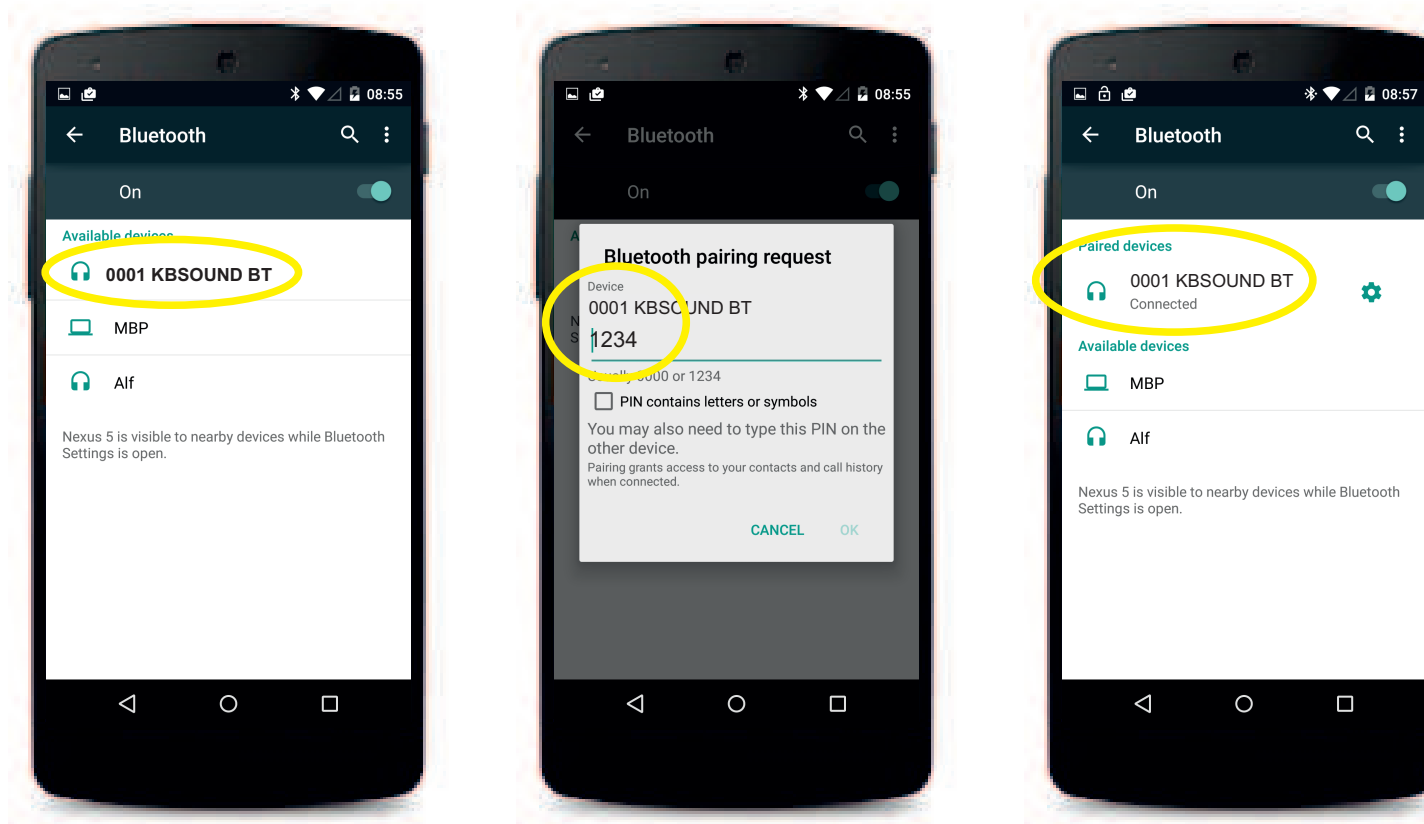
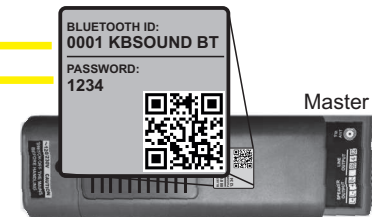


4.2. Bluetooth pairing and connection (ANDROID)

before operating the KBSOUND App it is necessary to be correctly paired and connected with the Master

the following process is just an example (Google Nexus 5 / Android 5.0.1) since different smartphones have different configurations for different brands, models and versions

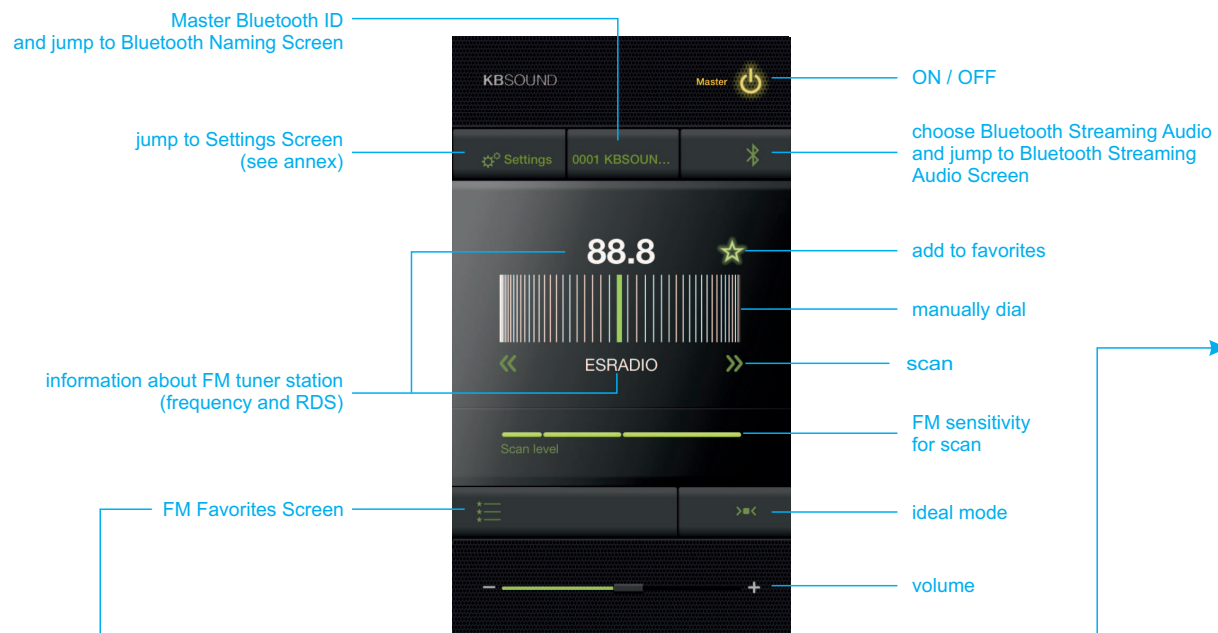
1. go to ANDROID Bluetooth settings menu
2. select the Master Bluetooth ID (e.g. **0001 KBSOUND BT**)
3. introduce the password (e.g. **1234**)
4. check that the Master (e.g. **0001 KBSOUND BT**) is correctly connected



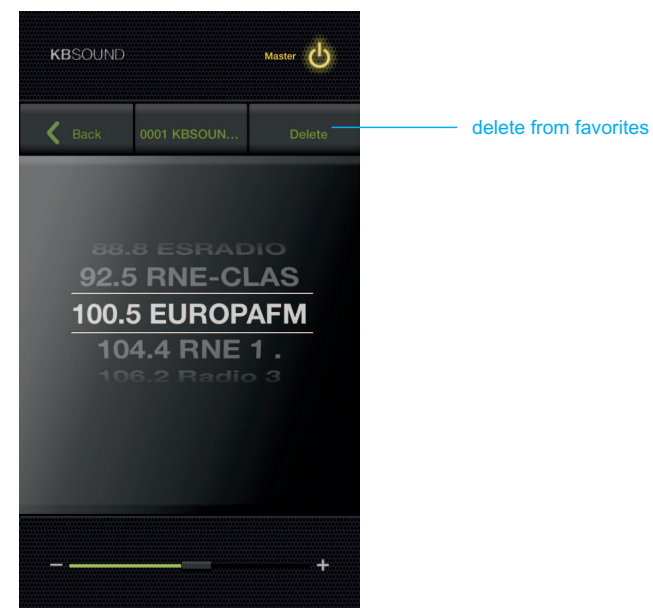
5. Listen FM

1. open the App KBSOUND
2. FM Screen permits to enjoy FM and save favorites FM station in the favorites list

FM Screen



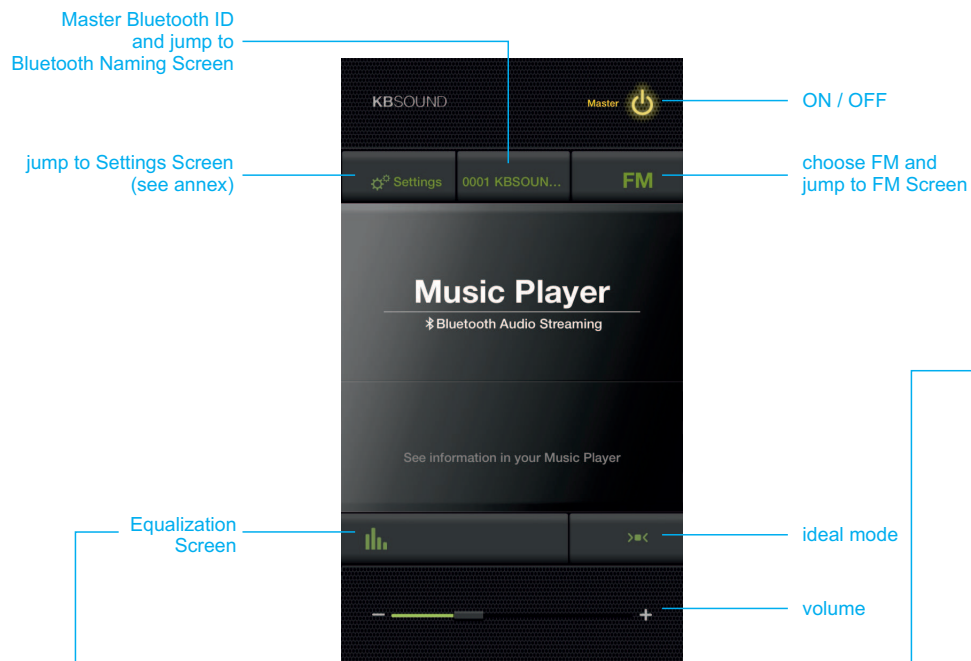
FM Favorites Screen



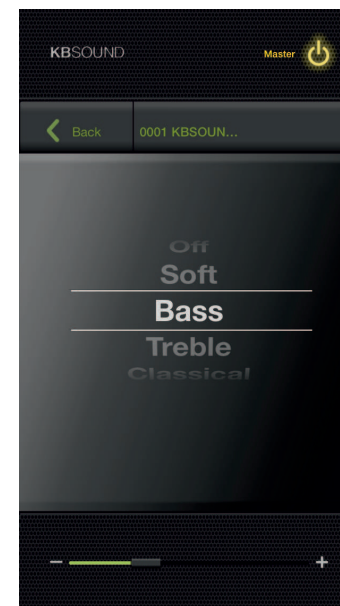
6. Listen Bluetooth streaming audio

1. Bluetooth Streaming Audio Screen permits to enjoy Bluetooth streaming audio from Music Player
2. Go to Music Player in the smartphone, choose the music to be listened and play it
3. Go back to the KBSOUND App and control the volume and equalization mode

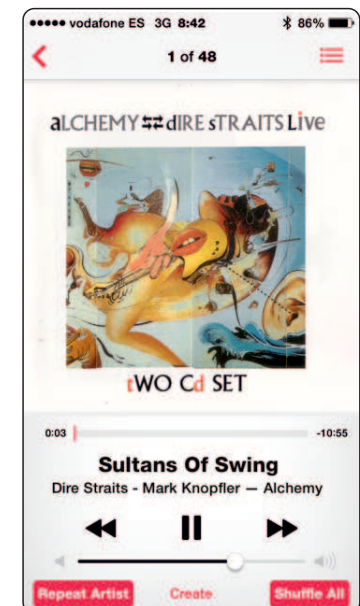
Bluetooth Audio Streaming Screen



Equalization Screen



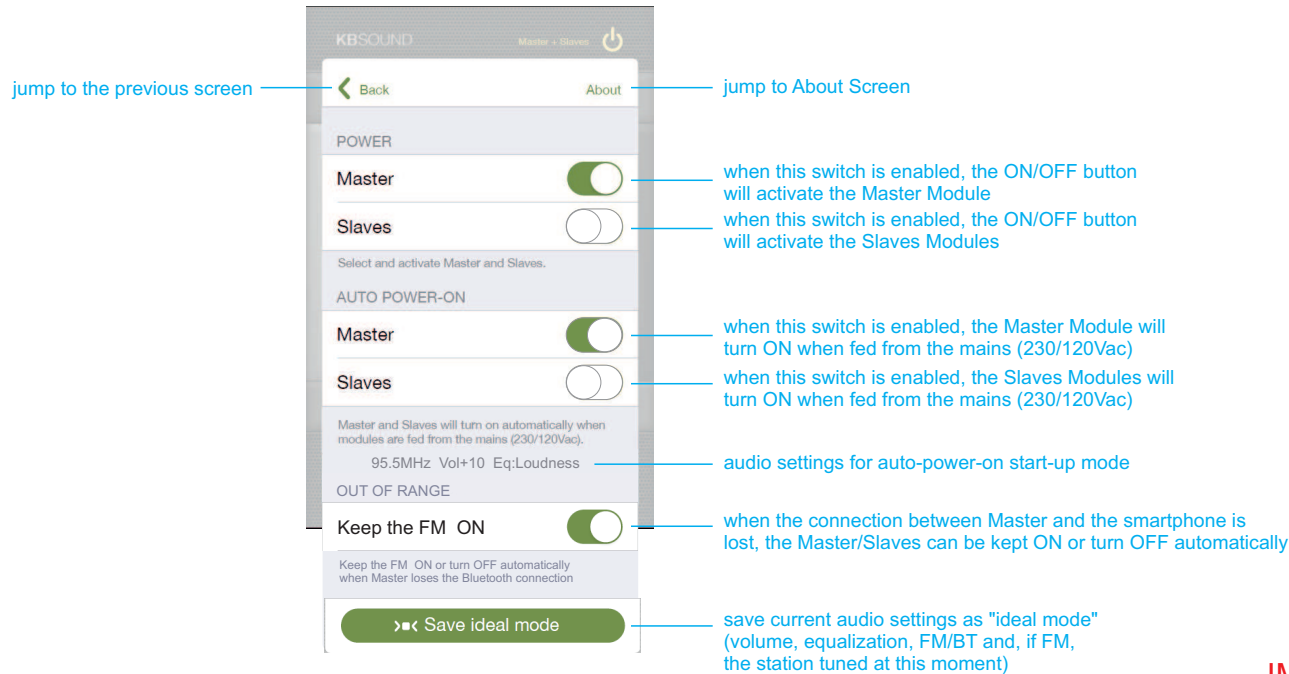
Music Player



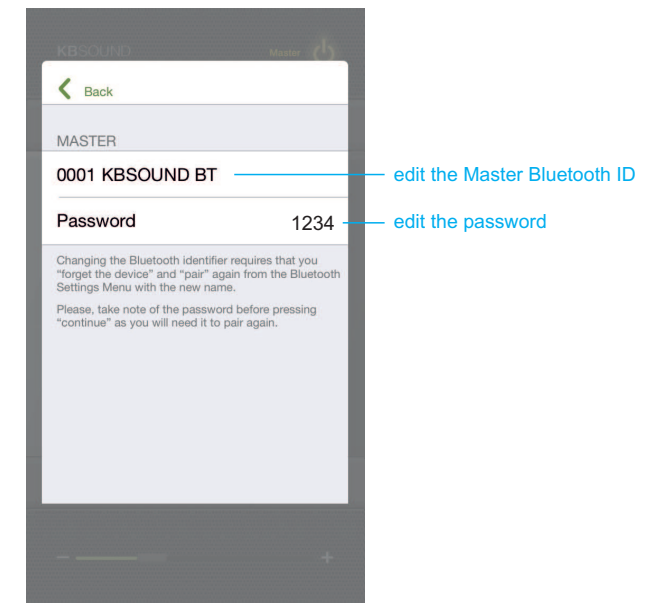
7. Annex: Settings and Bluetooth Naming

These two screens are for some settings available in the Master electronic module

Settings Screen



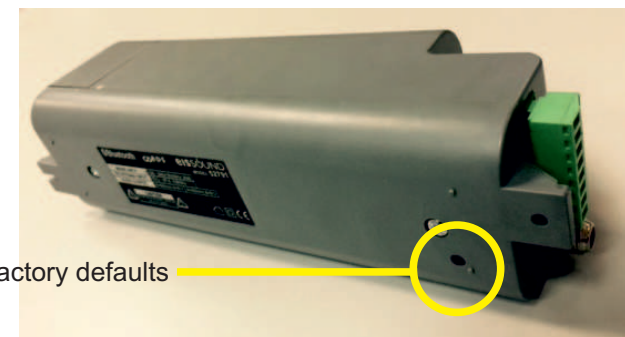
Bluetooth Naming Screen



IMPORTANT NOTE: Take care when change the Bluetooth ID and/or the Password since you will need it to connect again with the Master. If you forget it, reset the Master to the factory defaults



hold the button pressed for 4" to reset to factory defaults



This device complies with Part 15 of the FCC Rules. Operation is subject to the following two conditions: (1) this device may not cause harmful interference, and (2) this device must accept any interference received, including interference that may cause undesired operation.

FCC Caution:

Changes or modifications not expressly approved by the part responsible for compliance could void the user's authority to operate the equipment.

FCC Statement:

"This equipment has been tested and found to comply with the limits for a Class B digital device, pursuant to part 15 of the FCC Rules. These limits are designed to provide reasonable protection against harmful interference in a residential installation. This equipment generates, uses and can radiate radio frequency energy and, if not installed and used in accordance with the instructions, may cause harmful interference to radio communications. However, there is no guarantee that interference will not occur in a particular installation. If this equipment does cause harmful interference to radio or television reception, which can be determined by turning the equipment off and on, the user is encouraged to try to correct the interference by one or more of the following measures:

- Reorient or relocate the receiving antenna.
- Increase the separation between the equipment and receiver.
- Connect the equipment into an outlet on a circuit different from that to which the receiver is connected.
- Consult the dealer or an experienced radio/TV technician for help."

RSS-Gen & RSS-210 statement:

This device complies with Industry Canada licence-exempt RSS standard(s).

Operation is subject to the following two conditions: (1) this device may not cause interference, and (2) this device must accept any interference, including interference that may cause undesired operation of the device.

Le présent appareil est conforme aux CNR d'Industrie Canada applicables aux appareils radio exempts de licence. L'exploitation est autorisée aux deux conditions suivantes : (1) l'appareil ne doit pas produire de brouillage, et (2) l'utilisateur de l'appareil doit accepter tout brouillage radioélectrique subi, même si le brouillage est susceptible d'en compromettre le fonctionnement.

RSS-102 Statement:

This equipment complies with Industry Canada radiation exposure limits set forth for an uncontrolled environment.

Cet équipement est conforme à l'exposition aux rayonnements Industry Canada limites établies pour un environnement non contrôlé.

iPod and iPhone is trademark of Apple Inc. registered in the U.S. and other countries. "Made for iPod" and "Made for iPhone" means that an electronic accessory has been designed to connect specifically to iPod and iPhone and has been certified by Electrónica Integral de Sonido S.A. to meet Apple performance standards. Apple is not responsible for the operation of this device or its compliance with safety and regulatory standards. Please note that the use of this accessory with iPhone may affect wireless performance.

Electrónica Integral de Sonido S.A. is not responsible for any error or omissions that may appear in this manual, and reserves the right to make changes without prior notice.

Polígono Malpica Calle F Oeste
Grupo Gregorio Quejido, 87-88
50016 Zaragoza (SPAIN)
Tel.: 34 976 465 550
Fax: 34 976 465 559
comercial@eissound.com

www.eissound.com



eissound
It's Soundlife!

			Denominación <i>Denomination</i>		eISSOUND	
			KBSOUND BT USER AND INSTALLATION MANUAL		Código Pieza <i>Part Code</i>	
			Material <i>Material</i>		64460111	
			SOPORTE: FORMATO PDF TINTA:			
Fecha <i>Date</i> Nombre <i>Name</i>			Escala <i>Scale</i>		Código Documento <i>Document Code</i>	
Proyectado <i>Projected</i>	02/02/2015	L.ABOS	1:1		CC-1196ENG	
Dibujado <i>Drawn</i>	30/04/2015	L.ABOS	Din A4		Edición <i>Edition</i>	
Aprobado <i>Approved</i>		L.ABOS			00.3	

FC-036-05

this page is not included in the manual