

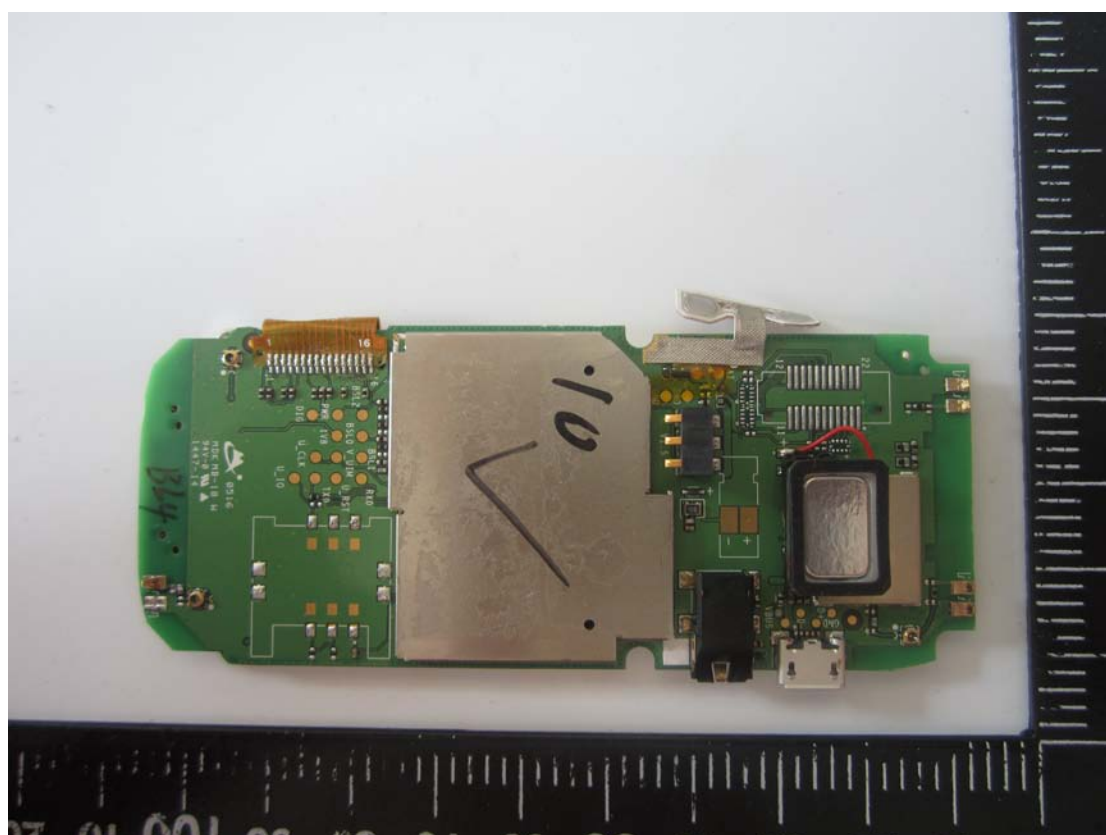
Internal Photos

1. EUT uncover view





2. Mainboard front view



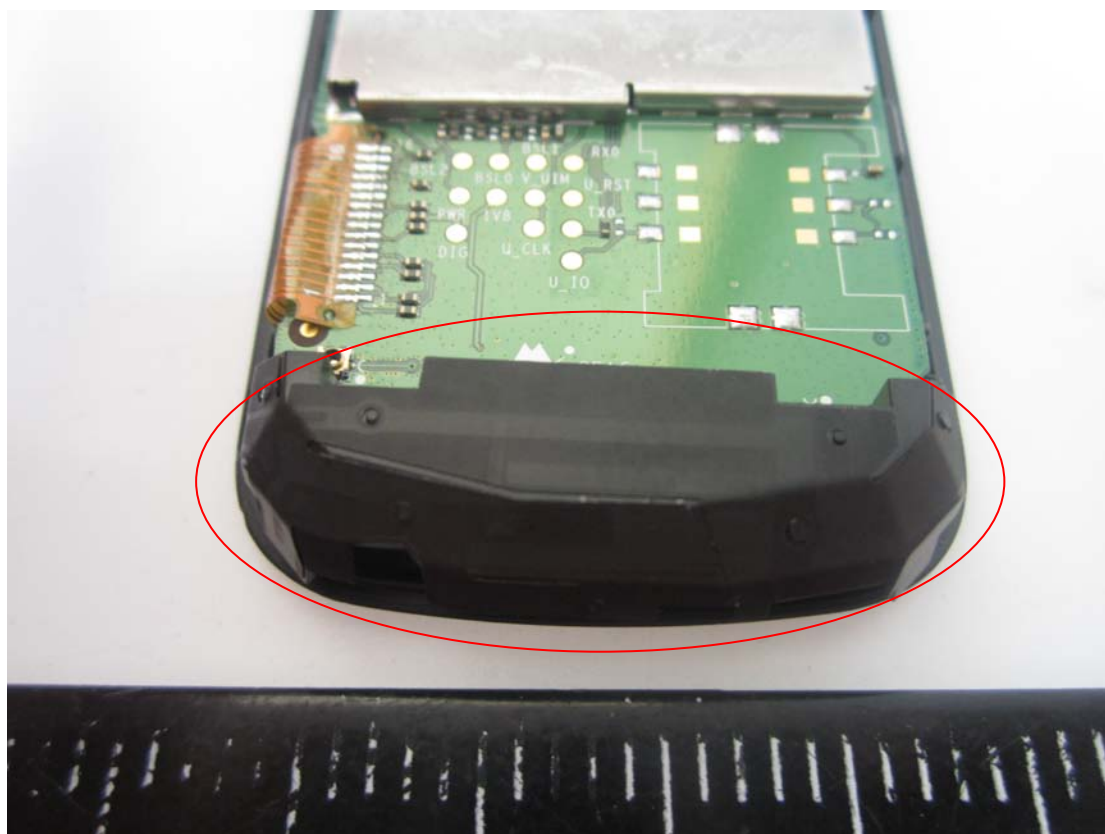
A photograph of the internal components of a mobile phone. The main green printed circuit board (PCB) is visible, featuring a large silver metal shield in the center. To the right, a black display panel is attached. On the left side, there is a camera lens and a microphone. Various electronic components, including capacitors and resistors, are mounted on the PCB. The phone is lying on a white surface.



4. RF chip view



5. Main antenna view



6. Diversity antenna view

