



Wi-Fi wall switch

GET STARTED

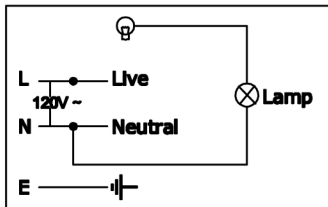


NOTE: This equipment has been tested and found to comply with the limits for a Class B digital device, pursuant to part 15 of the FCC Rules. These limits are designed to provide reasonable protection against harmful interference in a residential installation. This equipment generates, uses and can radiate radio frequency energy and, if not installed and used in accordance with the instructions, may cause harmful interference to radio communications. However, there is no guarantee that interference will not occur in a particular installation. If this equipment does cause harmful interference to radio or television reception, which can be determined by turning the equipment off and on, the user is encouraged to try to correct the interference by one or more of the following measures:

- Reorient or relocate the receiving antenna.
- Increase the separation between the equipment and receiver.
- Connect the equipment into an outlet on a circuit different from that to which the receiver is connected.
- Consult the dealer or an experienced radio/TV technician for help.

This device complies with Part 15 of the FCC Rules. Operation is subject to the following two conditions: (1) this device may not cause harmful interference, and (2) this device must accept any interference received, including interference that may cause undesired operation.

Changes or modifications not expressly approved by the manufacturer could void the user's authority to operate the equipment



Please make sure the device plugged in NEO Wi-Fi Switch is the right device to be controlled by your smart device.

Please disconnect NEO Wi-Fi Switch from power source if you are long absent.

Please make sure NEO Wi-Fi Switch is connected to Wi-Fi network secured by password. If there is change of SSID or password of Wi-Fi router, NEO Wi-Fi Switch has to be resynchronized with Wi-Fi router on your smart device.

Each NEO Wi-Fi Switch is assigned with an individual local IP address automatically by Wi-Fi router.

THIS IS HOW NEO SWITCH WORKS



1

Scan the QR code to download Neo app at App Store or Google Play.

You also can search keyword “ANKUOO” at Google play or App store to download Neo App.



2

Plug Neo into power socket, then press ON/OFF switch for 5 seconds and release the switch. The Wi-Fi indicator light will flash quickly.

Now, Neo is ready for sync. configuration.



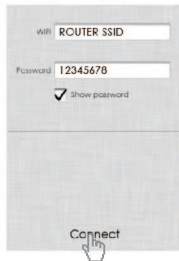
3

Connect your smart devices to local Wi-Fi network and launch Neo App. Find “add new device” in the menu.



4

Make sure your Wi-Fi SSID is the same as the Wi-Fi network, your smart device is connected and input password. The connection process takes 15–120 seconds which depends on your network condition and length of Wi-Fi password.



- ★ You do not need to reconfigure Neo again no matter you turn it off, or even unplug it from one socket and plug it in another socket, as long as the SSID and password is unchanged and the Wi-Fi network is working. Once the device is configured, it will appear on all other smart devices' app automatically.

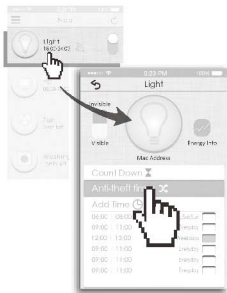
5

When configuration is done, the device will be listed in the device homepage. The ON/OFF state of Neo can be changed by clicking its switch on app.



6

Click one device's icon on homepage to enter detailed setting page for this device.



7

NEO comes with three timer modes. You can set them at anywhere on your app with internet connection.





Countdown Timer:

Shut on/off device connected to Neo by the time assigned.



Anti-theft Timer:

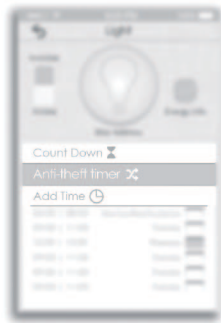
Guard your house by turning on/off the lamp connected to Neo randomly: the timer splits the period you set into as many parts as you want it to be turn on/off and picks “on time” and “off time” in each part of time split randomly.



Schedule Timer:

Perform the same routine operation at the same time in a week for your home appliances.

★ When one mode is activated, the rest two modes will be deactivated.



NEED MORE HELP?

Learn more online
www.ankuoo.com

If you encounter any problem for configuration,
please check detailed trouble guide at our website or
contact our service office or authorized seller.



©2014 Ankuoo Electronics Inc. All rights reserved.