

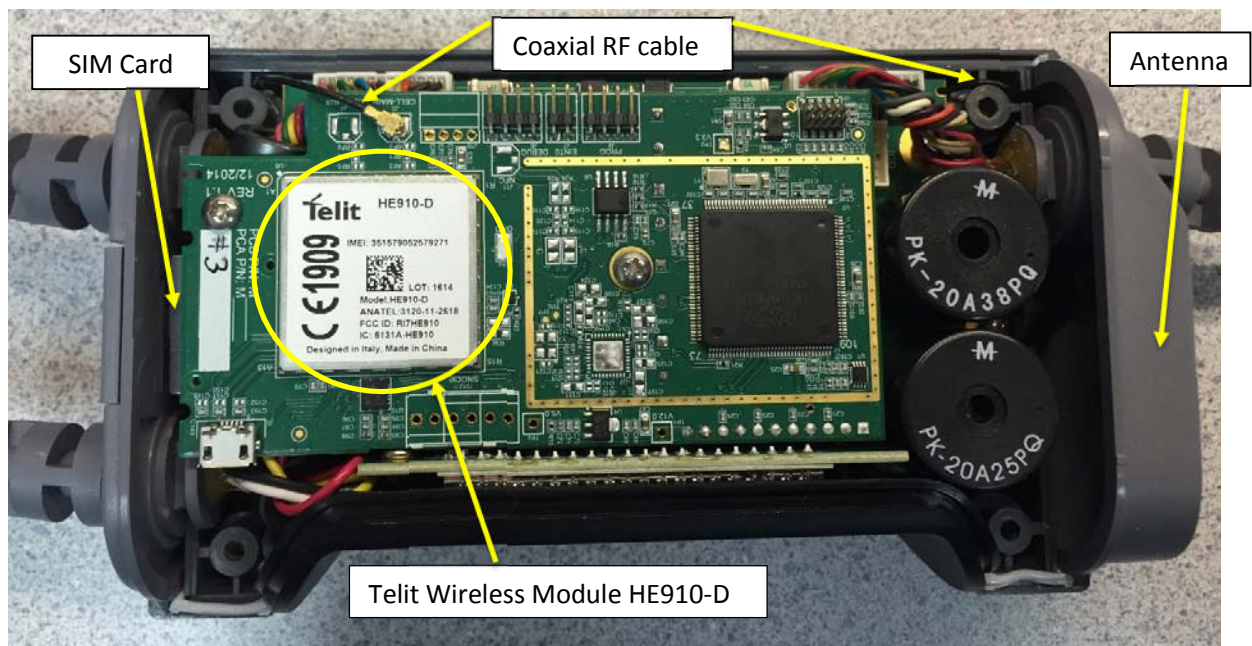


8965 Interchange Drive * Houston, Texas 77054
p: 713-592-0913 * f: 713-665-0963

ReliantHeart, Inc. FCC ID: 2AB4ZCTL002

ReliantHeart HeartAssist5® Contoller Model CTL002

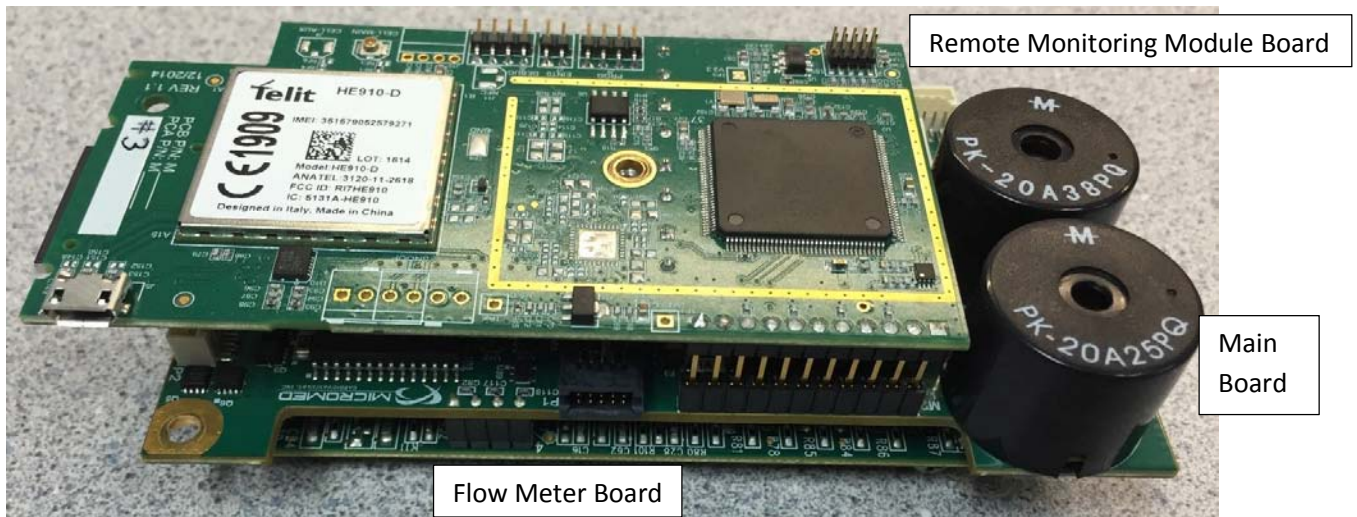
Wireless System Components



Antenna (M10418) Position within Right Housing (M10076)



Board Stack within Controller (M10022)



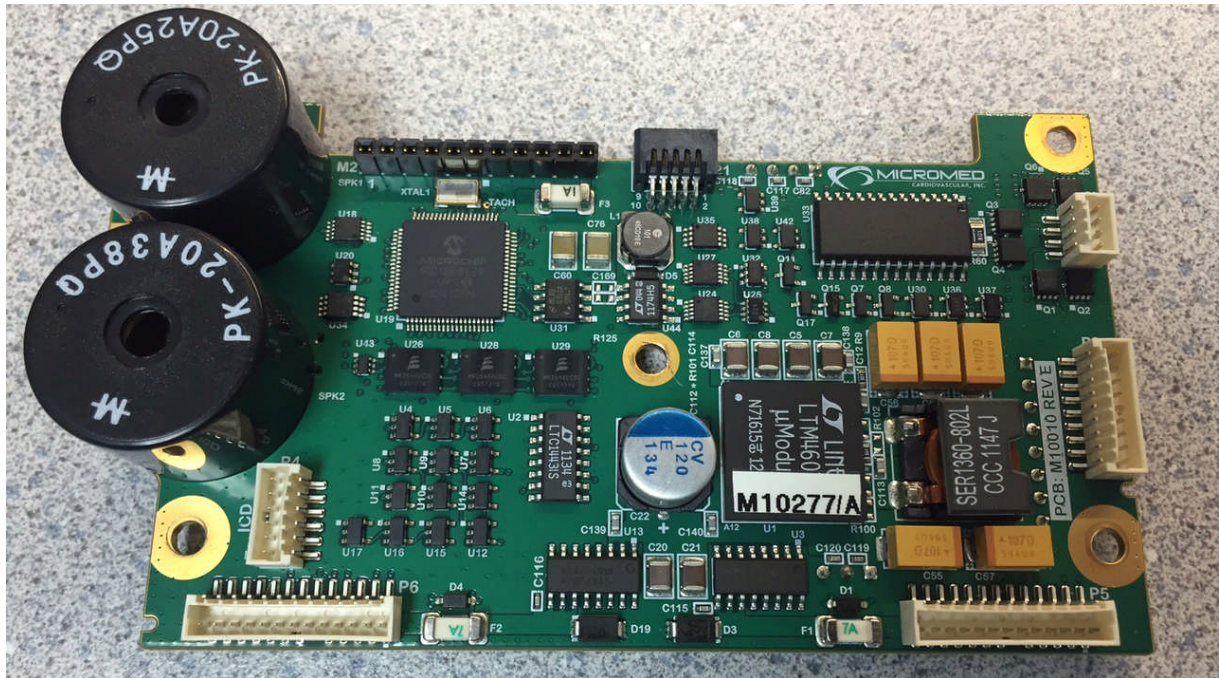
Remote Monitoring Module Board (M10419) (Top)



Remote Monitoring Module Board (M10419) (Bottom)

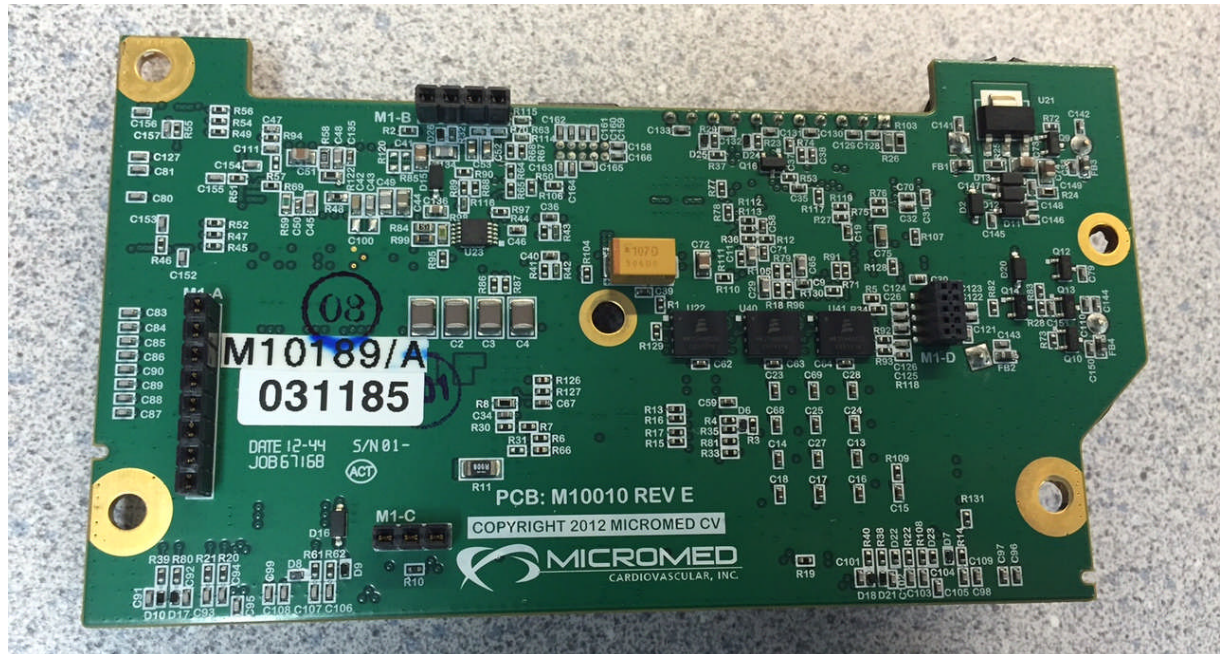


Main Board (M10277) without RF Absorber material (Top)

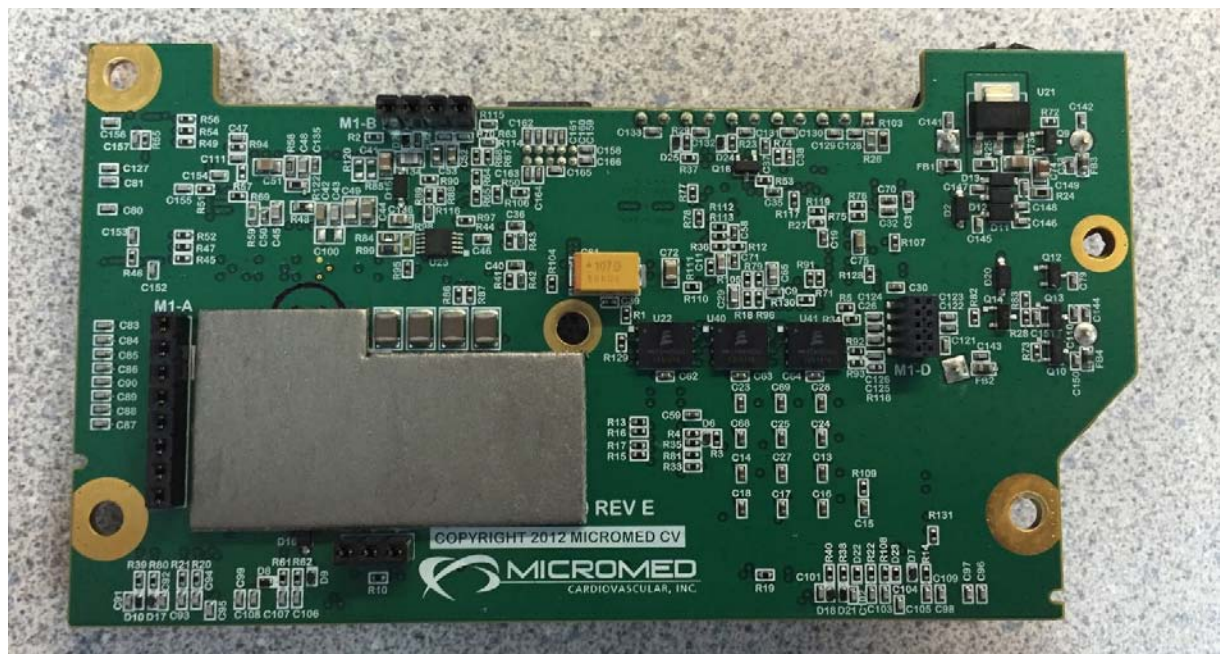


Main Board (M10277) with RF Absorber material (M10378) (Top)

Main Board (M10277) without RF Absorber material (Bottom)



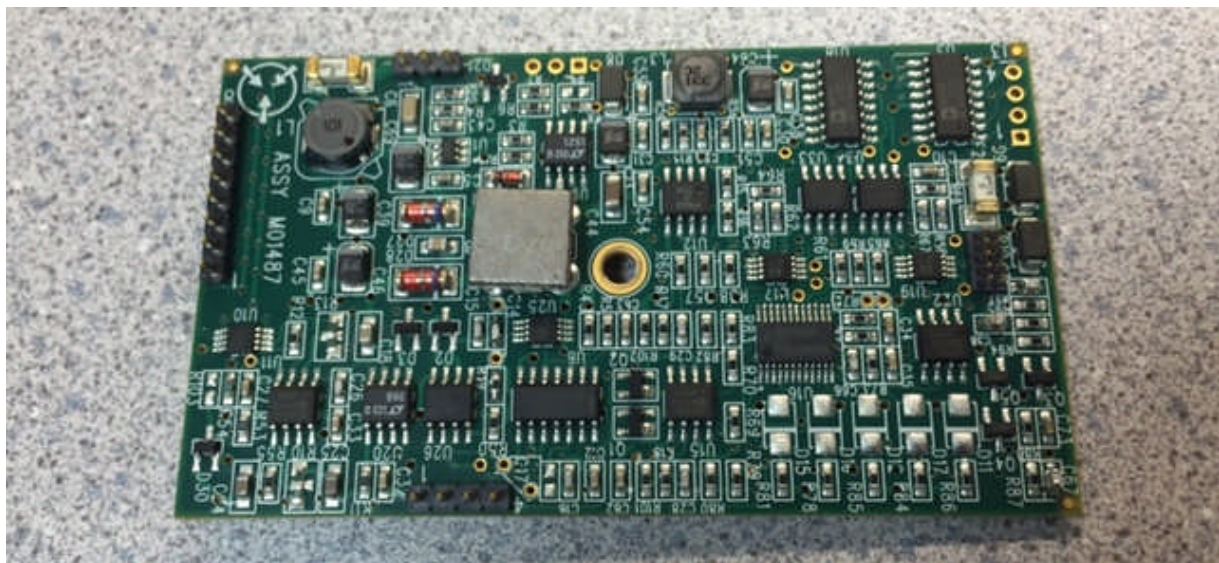
Main Board (M10277) with RF Absorber material (M10379) (Bottom)



Flow Meter Board (M10205) without RF Absorber Material (Top)



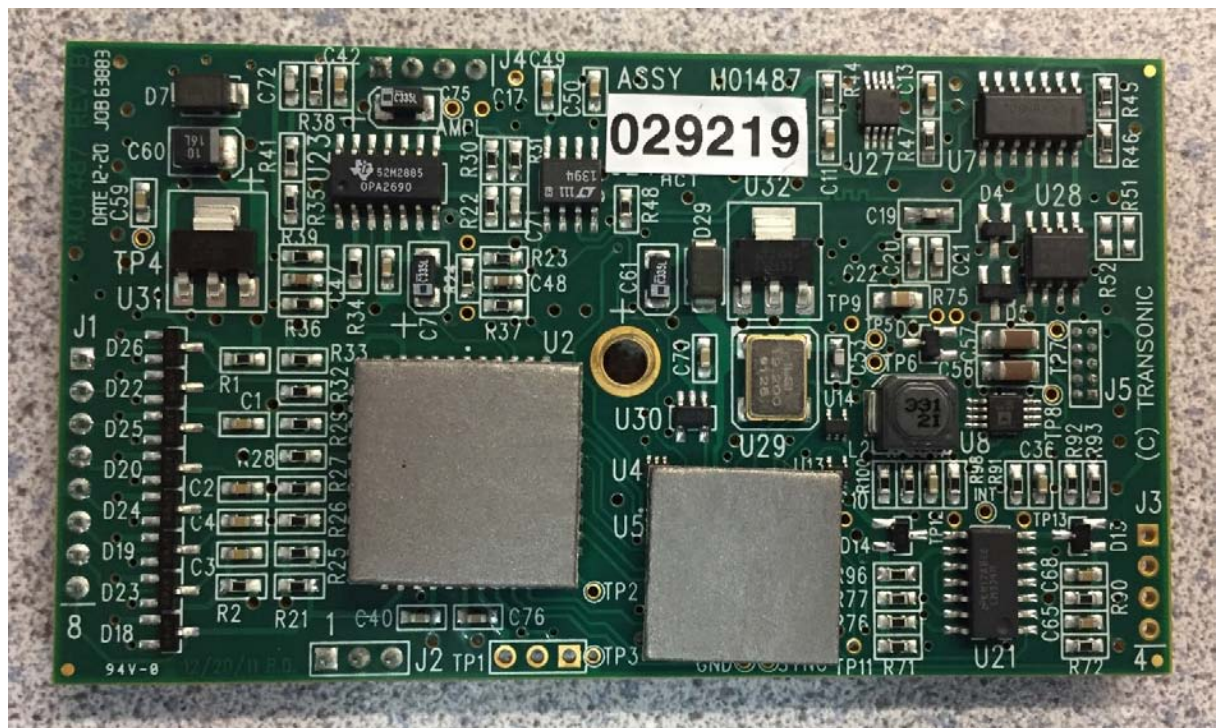
Flow Meter Board (M10205) with RF Absorber Material (M10365) (Top)



Flow Meter Board (M10205) without RF Absorber Material (Bottom)



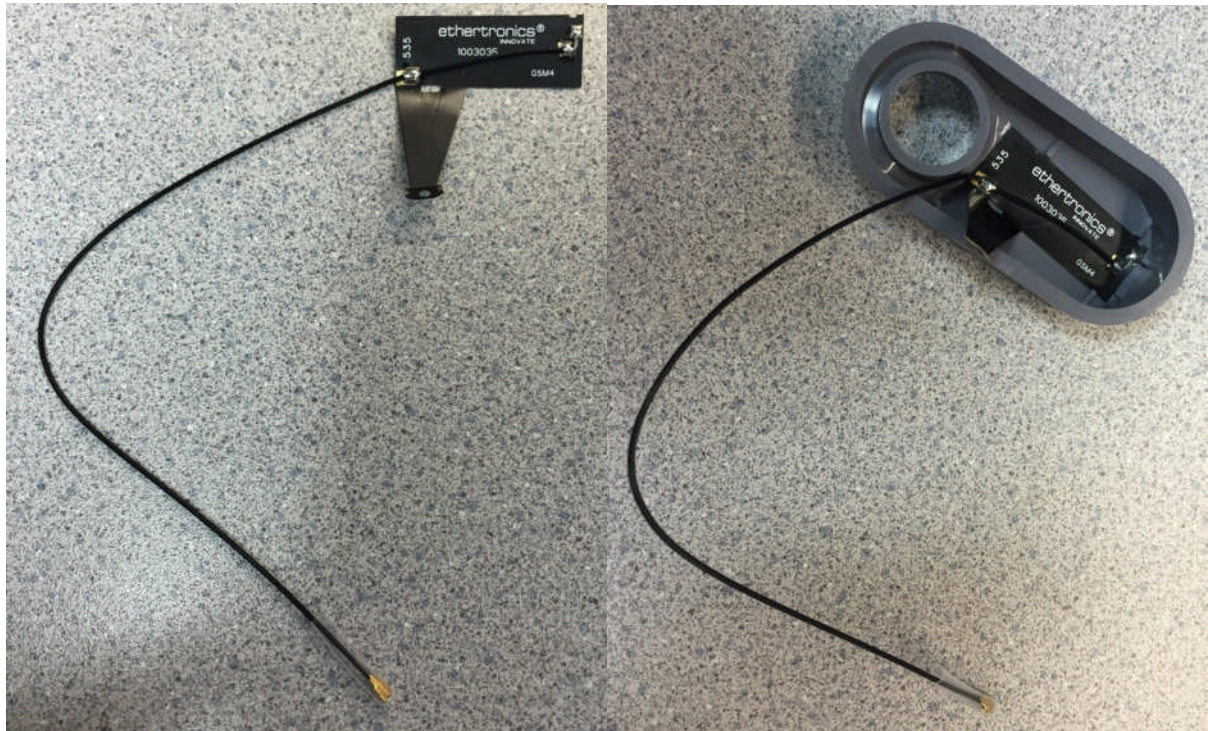
Flow Meter Board (M10205) with RF Absorber Material (M10376 & M10377) (Bottom)



Antenna (M10418)

&

Antenna (M10418) within Right Housing (M10076)



Antenna (M10418) within Right Housing (M10076) grounded to Main Board (M10277)

