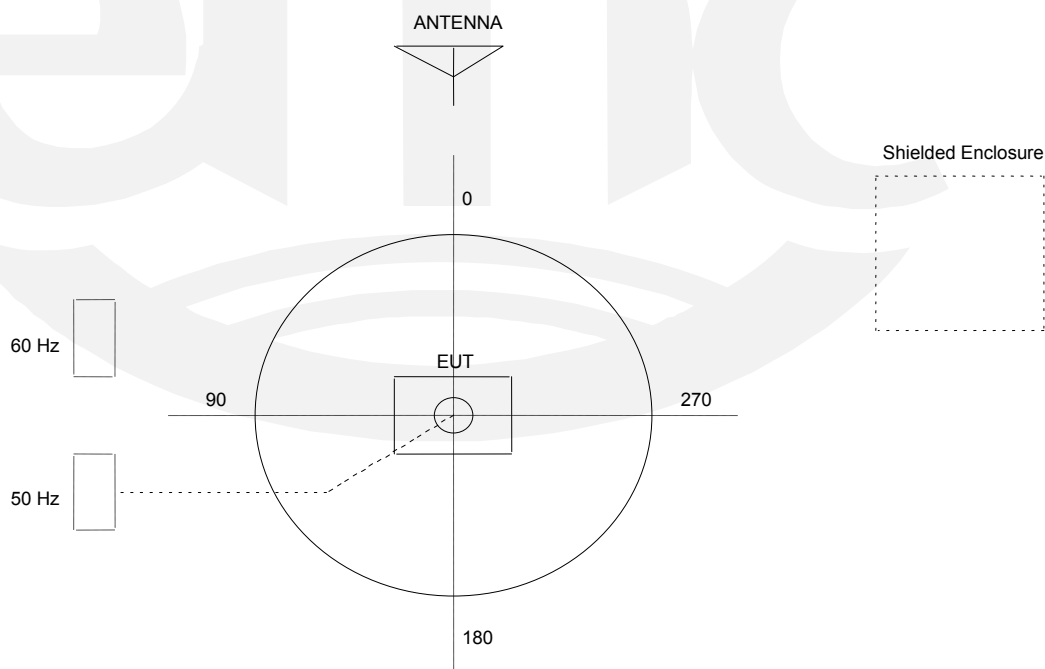


TEST SETUP FOR EMISSIONS TESTING

TÜV SÜD America Inc, Taylors Falls
Large Test Site

Notes:

1. Items shown in dotted lines are located on the floor below the test area. It is 5 meters vertically from the ground floor to the test area.
2. 50 Hz and 60 Hz are power panels for alternating current.
3. The antenna may be positioned horizontally 3 and 10 meters from the center of the turntable.
4. The circle is either a 6.7 meter or 1.2 meter diameter turntable.
5. A ground plane is in the plane of this sheet.
6. The test sample is shown in the azimuthal position representing zero degrees.

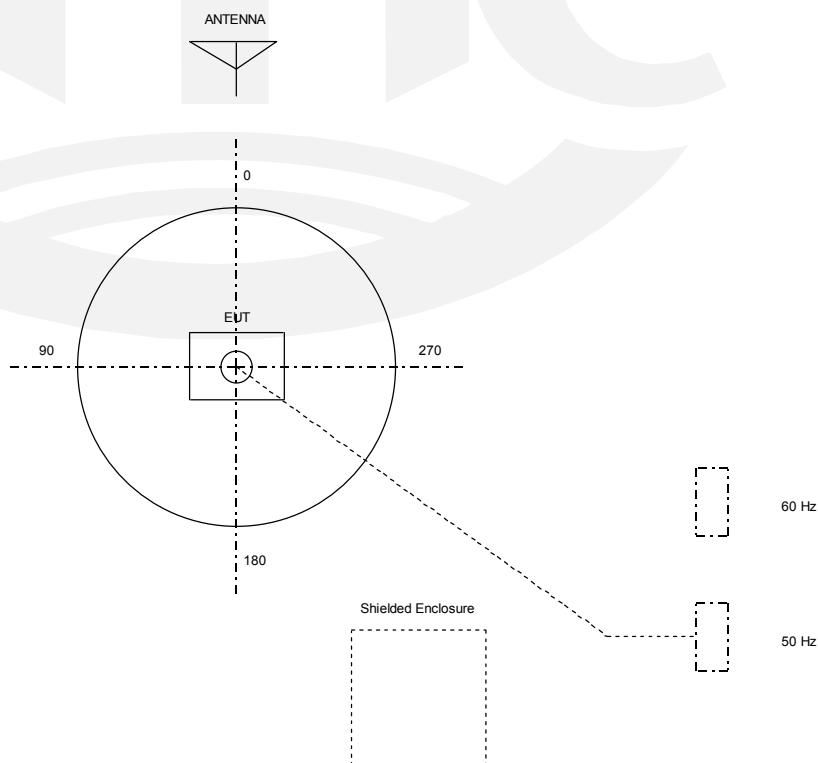


TEST SETUP FOR EMISSIONS TESTING

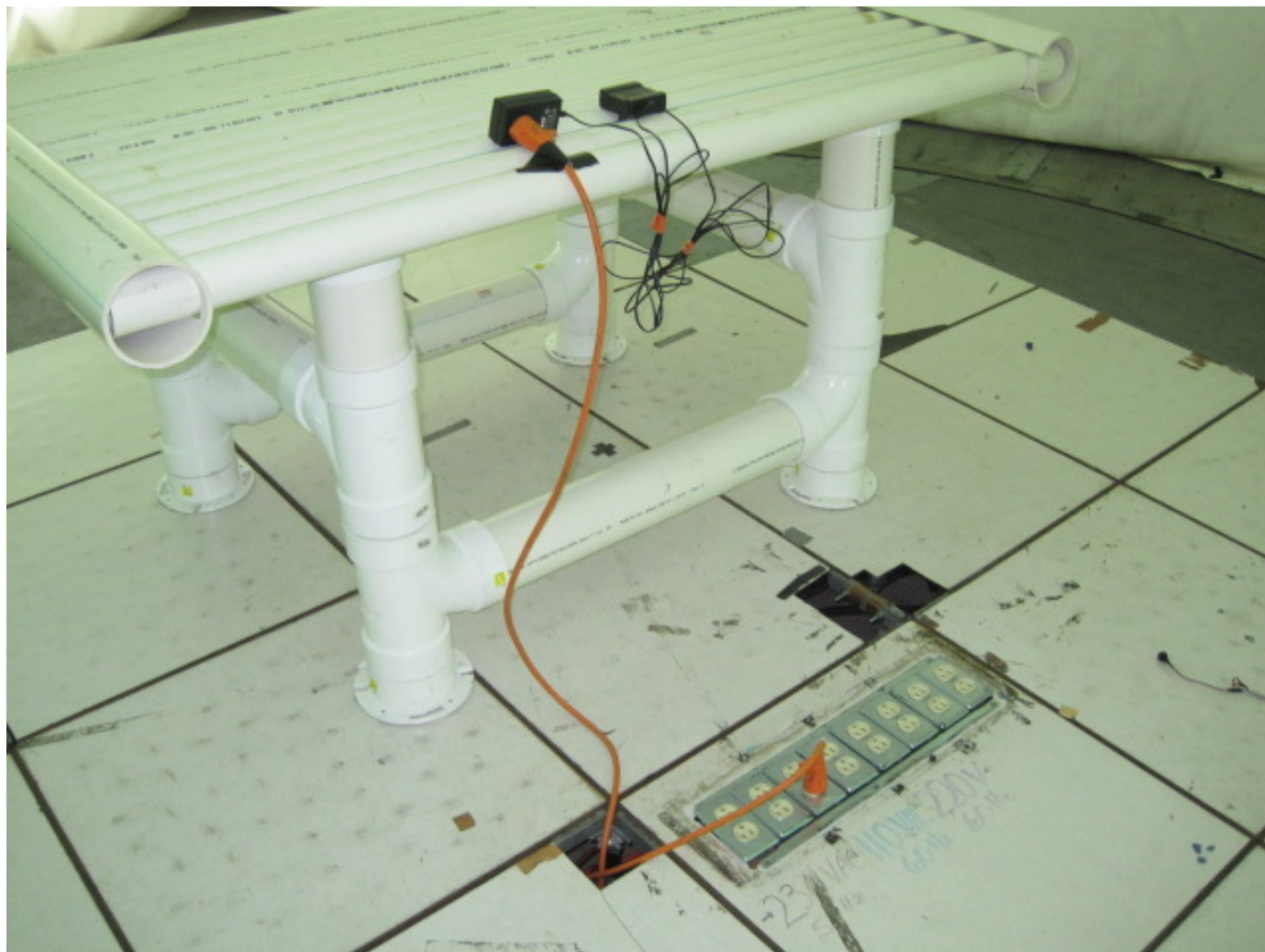
TÜV SÜD America Inc
Millville Test Site

Notes:

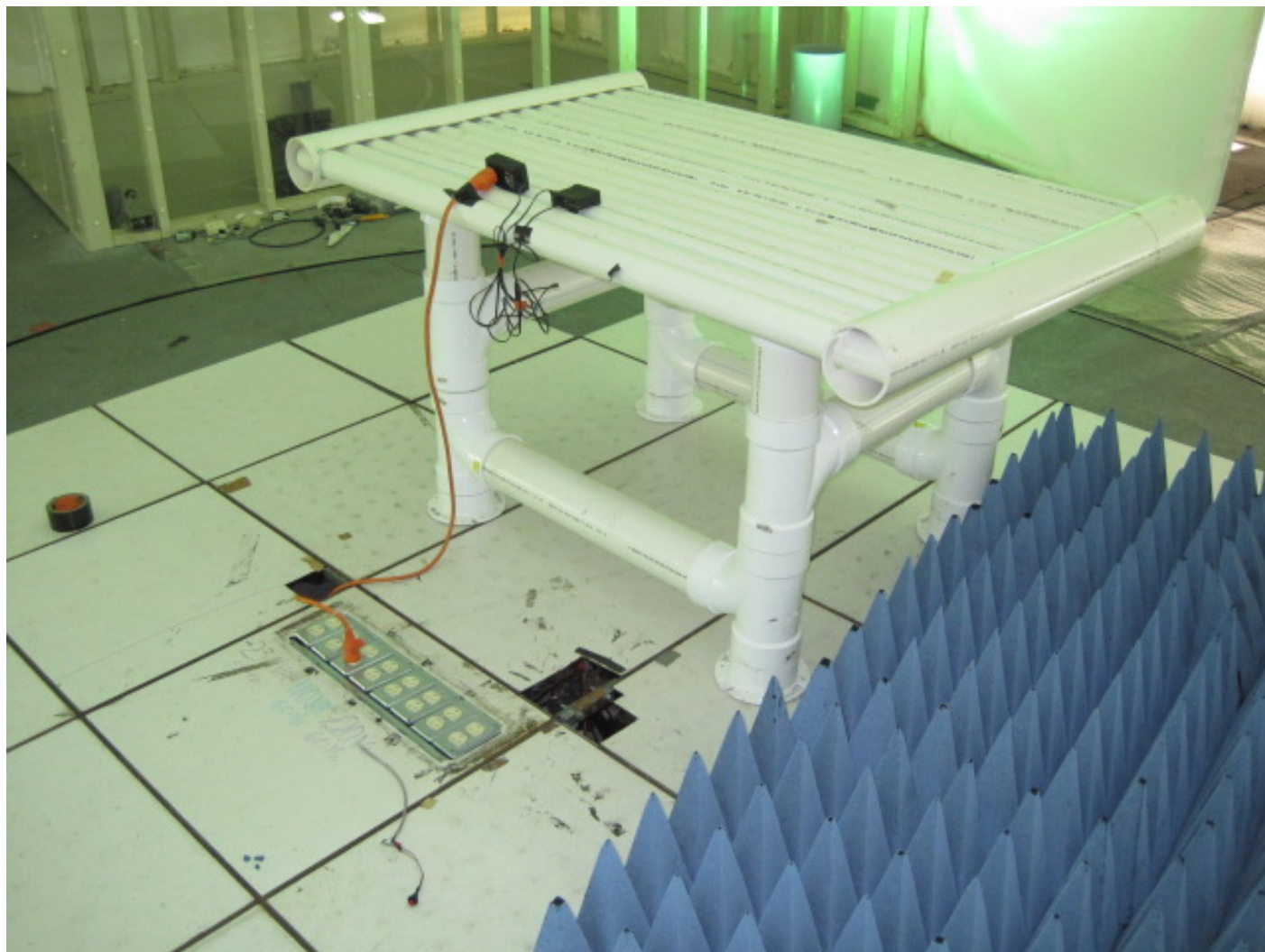
1. Items shown in dotted lines are located on the floor below the test area. It is 5 meters vertically from the ground floor to test area.
2. 50 Hz and 60 Hz are power panels for alternating current.
3. The antenna may be positioned horizontally 3 or 10 meters from the center of the turntable.
4. The circle is a 6.7 meter diameter turntable.
5. A ground plane is in the plane of this sheet.
6. The test sample is shown in the azimuthal position representing zero degrees.



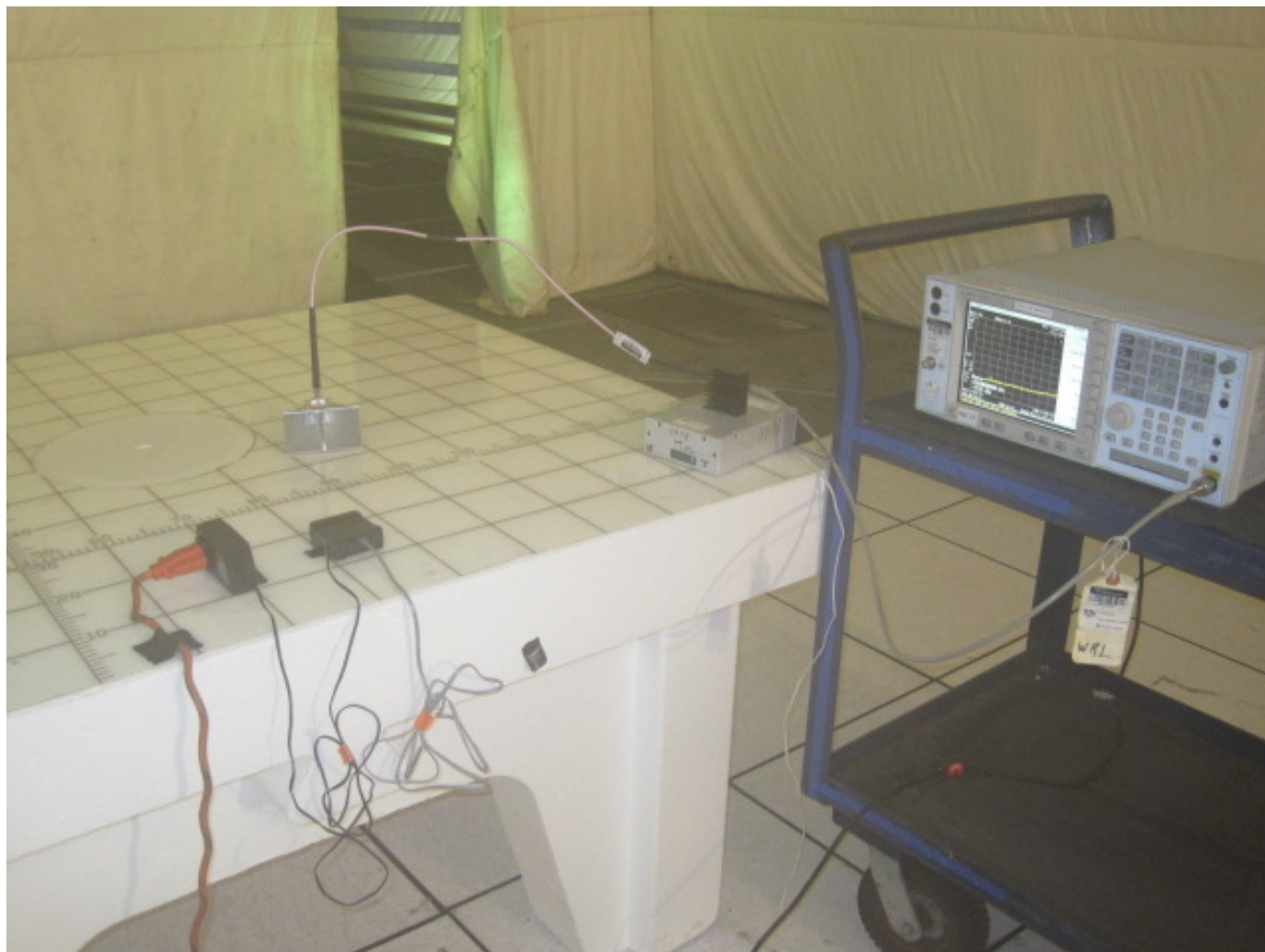
Test-setup photo(s): Radiated emissions 30-1000 MHz



Test-setup photo(s): Radiated emissions above 1 GHz



Test-setup photo(s): Radiated emissions 18 - 25 GHz



Test-setup photo(s): Conducted limits

