

# SHARPER IMAGE®

## wireless handset CELL PHONE CHARGER

### FEATURES

- PLACE AND RECEIVE CALLS ON YOUR SMARTPHONE WHILE SIMULTANEOUSLY CHARGING
- BLUETOOTH® ENABLED HANDSET ALLOWS YOU TO TALK UP TO 30 FT AWAY FROM THE CHARGING BASE
- 3 USB DOCKING BAY ADAPTERS CHARGE IPHONES®, GALAXY S, AND MOST OTHER ANDROID™ SMARTPHONES
- LIGHTWEIGHT HANDSET WITH VOLUME CONTROL

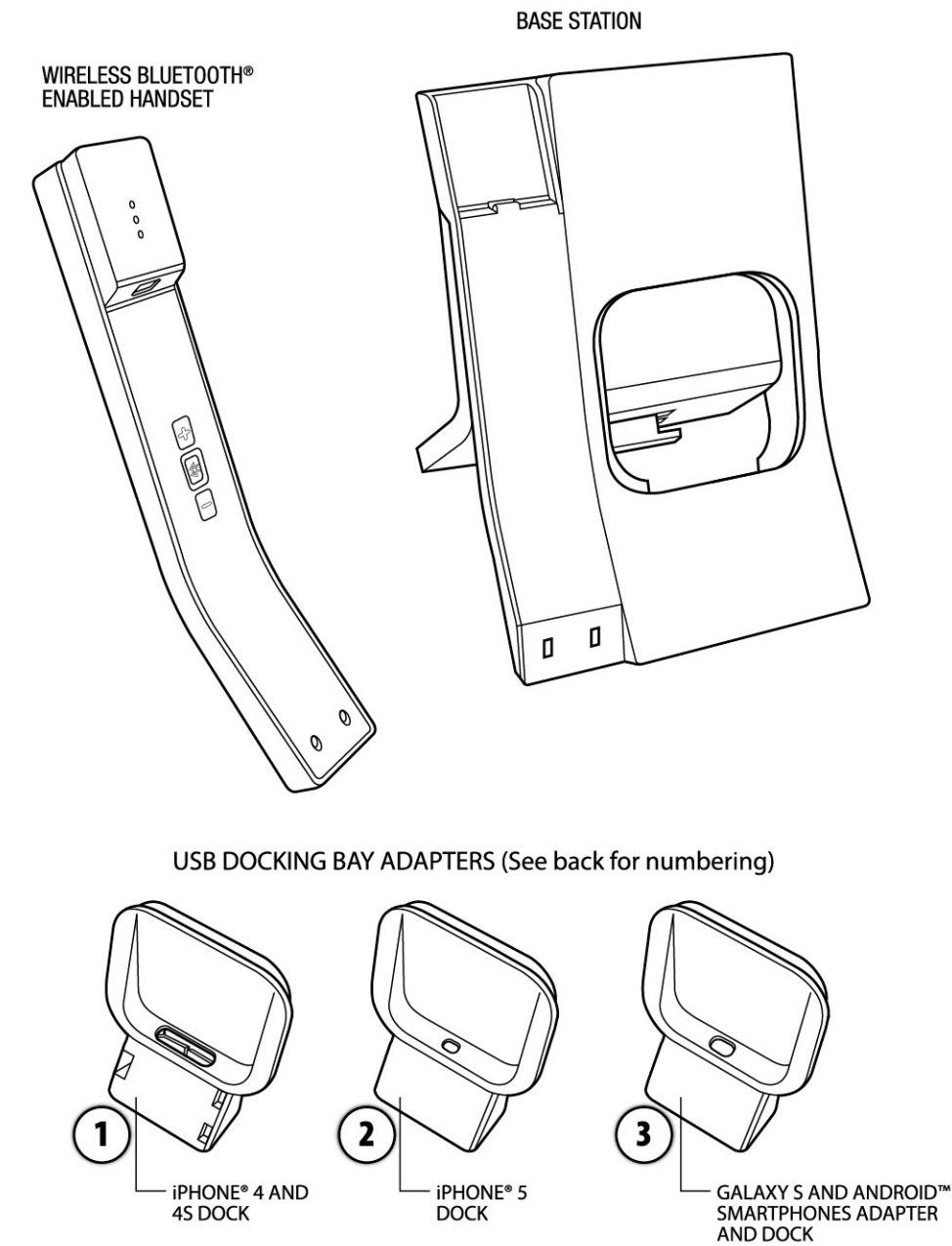
COMPATIBLE WITH  
iPhone® 4,  
iPhone® 5, AND  
SAMSUNG®  
SMARTPHONES



Pictured mobile phone not included.  
BLUETOOTH® compatible device required for connectivity. Colors and styles may vary.

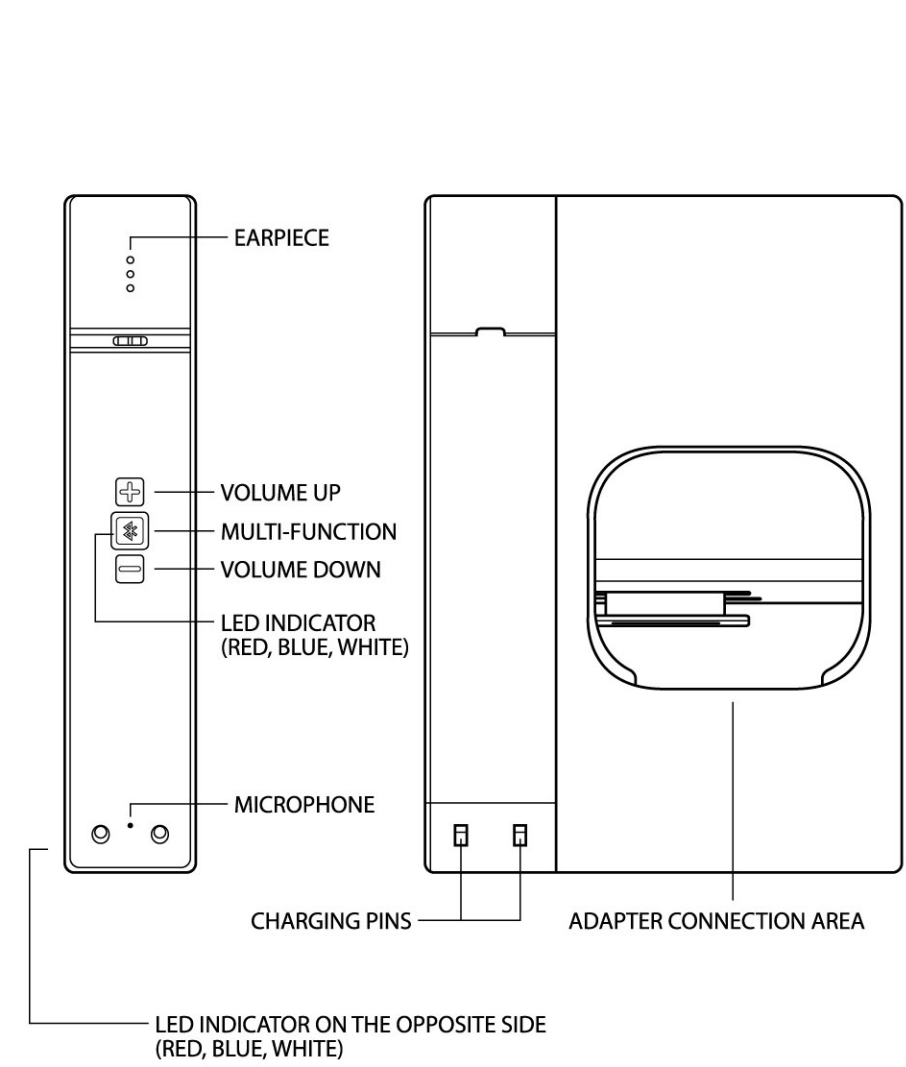
### INSTRUCTION MANUAL

### CONTENTS



INCLUDED IN THIS SET:  
1 HANDSET / BASE STATION  
3 PHONE DOCKS/ POWER ADAPTERS  
1x 1.5M LONG USB POWER CORD FOR CHARGING THE PHONE BASE (NOT SHOWN)  
1x USB CABLE FOR ANDROID™ SMARTPHONES (NOT SHOWN)

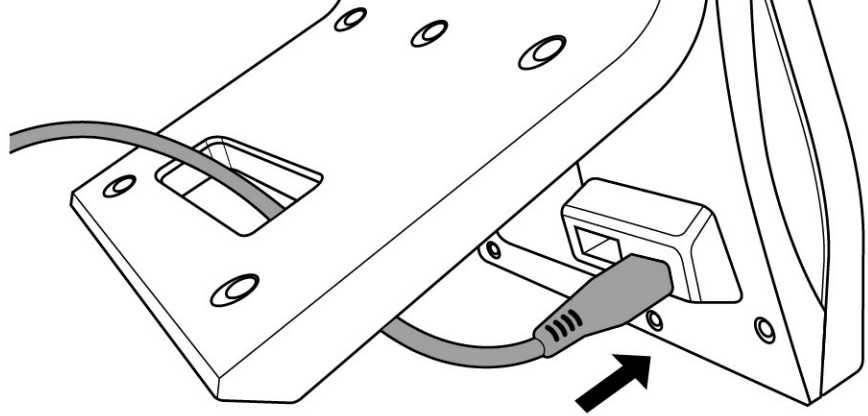
### CONTROLS



### CHARGING THE HANDSET

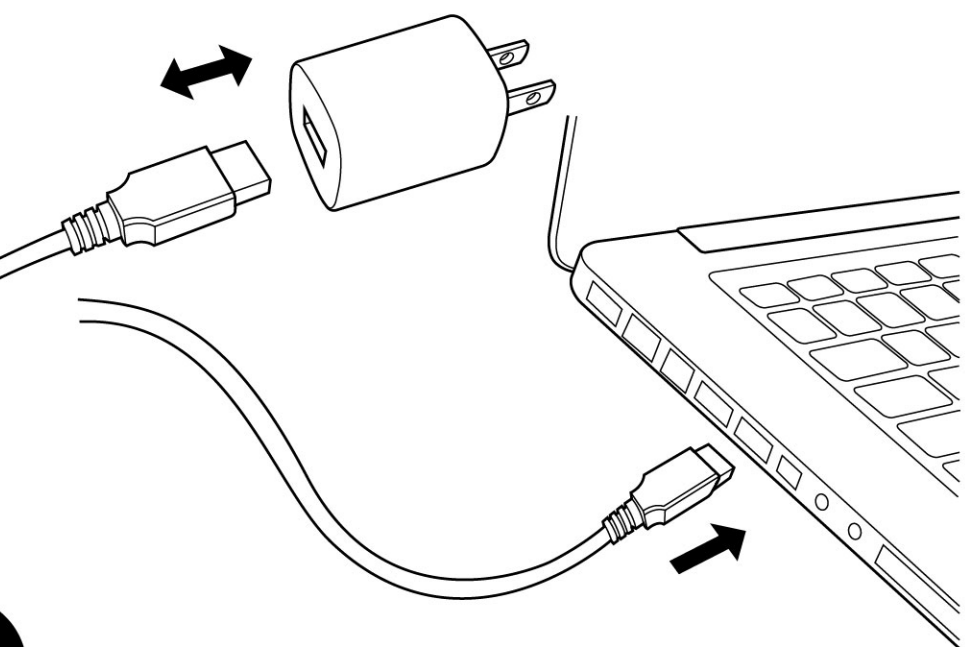
With the handset resting in the base station, plug the USB cable into the port and slide it through the slot on the back of the base station. Then plug the cable into a standard wall outlet and charge for 3 hours.

NOTE: The USB cable and adapter must remain plugged into the wall and into the Sharper Image Cell Phone Charger to charge your phone.



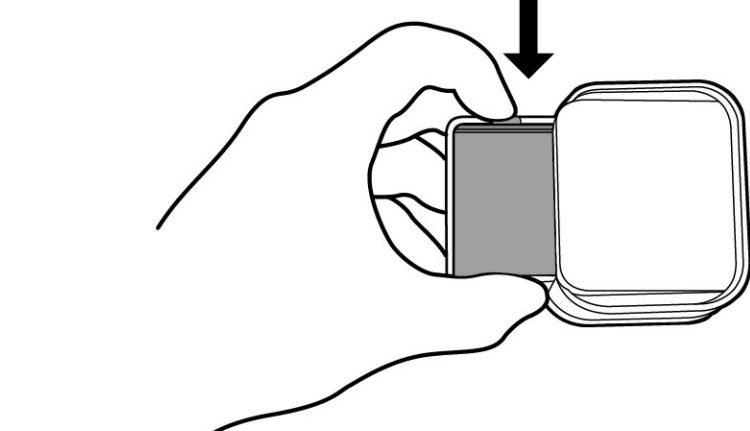
### ALTERNATE CHARGING METHOD

Remove the adapter at the end of the USB cable and plug into the USB port on your computer. Charge for 3 hours. On a full charge, you will be able to use the handset continuously for up to 5 hours.



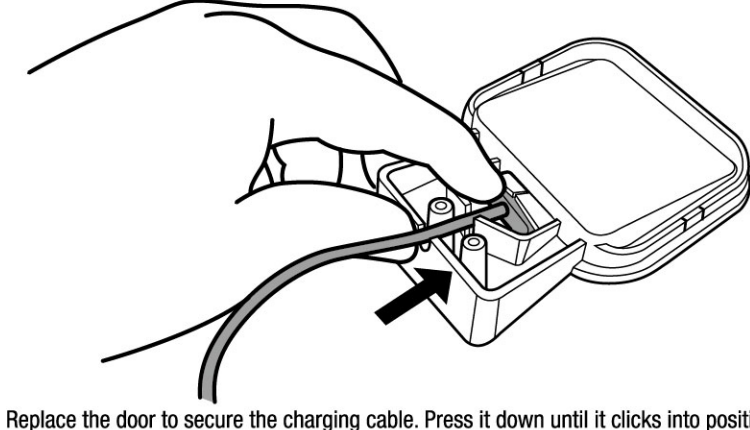
### CONNECTING THE USB DOCKING BAY ADAPTER

Choose the adapter that matches your smartphone (please refer to the numbered adapters on the Contents page). Turn it upside down and press on the tabs to release the door.



Remove the door. Slide the end of the charging cable into the opening and press the cable down into the slots.

NOTE: For the iPhone 4 and 4S adapter, slide the end of the charging cable in between the foam securing pads in the opening and press the cable down into the slots.

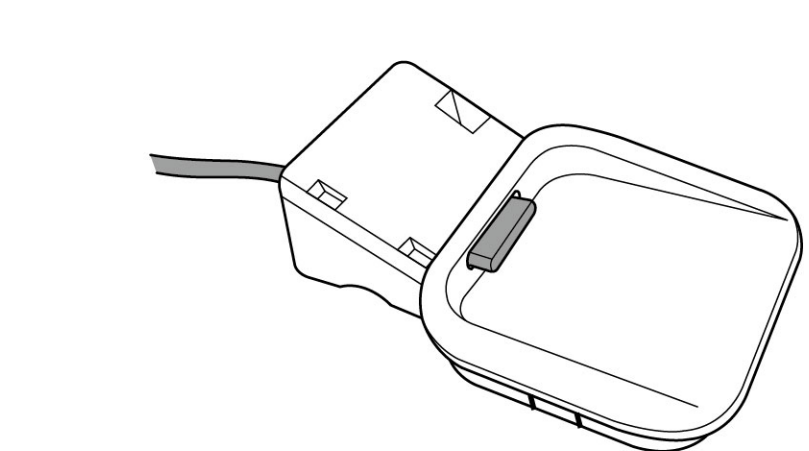


Replace the door to secure the charging cable. Press it down until it clicks into position.

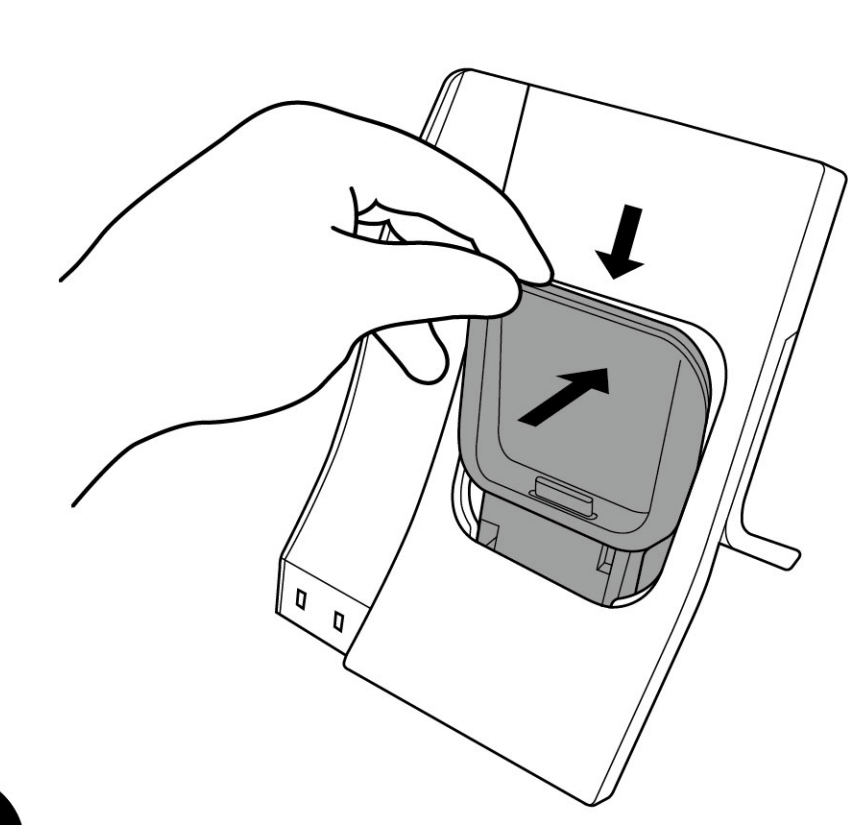


### CONNECTING THE USB DOCKING BAY ADAPTER

Flip the adapter over and you should see the pin dock connector coming through the opening.

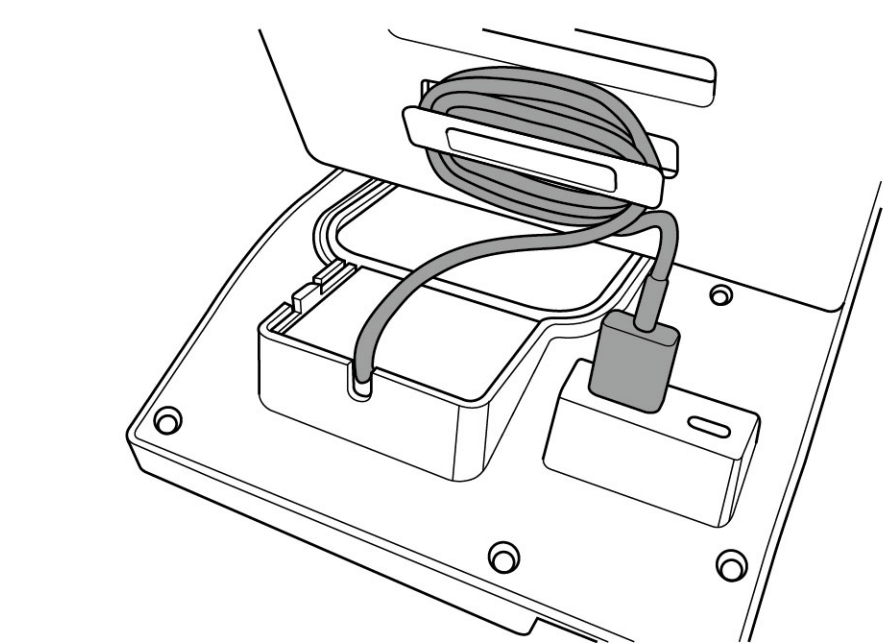


Place the adapter in the base station by pressing it down and back into position.

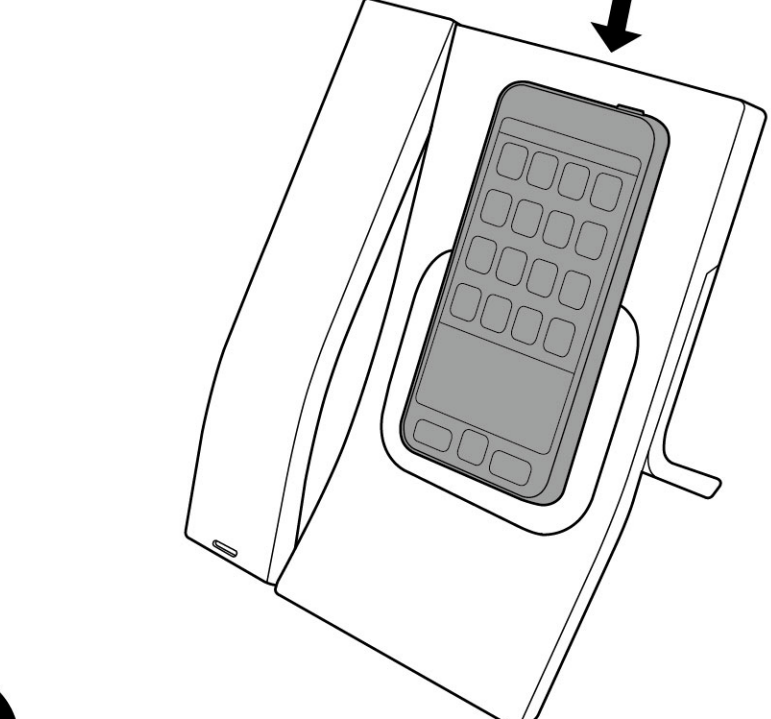


### CONNECTING THE USB DOCKING BAY ADAPTER

Flip the base station over. Wrap the excess charging cable around the post and plug the end into the port.



Slide and connect your smartphone onto the base station.



### PAIRING THE BLUETOOTH® HANDSET WITH YOUR PHONE

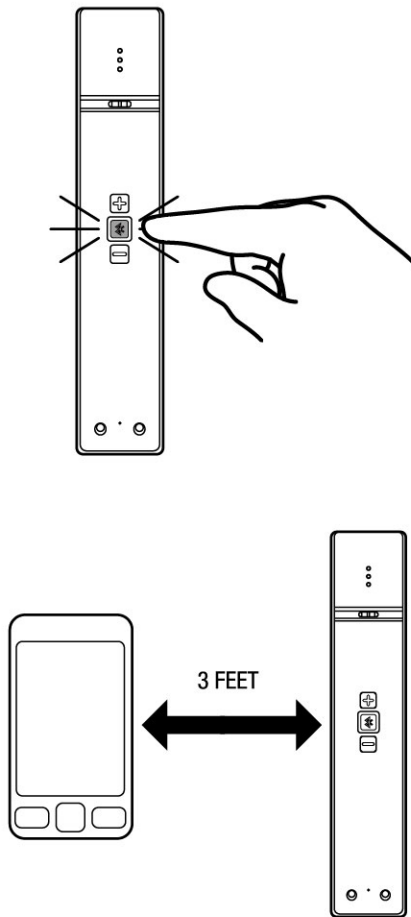
Your smartphone must have BLUETOOTH® capability. Consult the smartphone manufacturer or user manual if you are unsure if your smartphone has this feature.

To begin, make sure your Sharper Image handset is off. Press the MFB button (Multi-Function Button) for 5 seconds. Keep holding the MFB button until you hear a sound and the blue light turns on. The blue light will then turn off and the handset will go into standby mode. Standby mode is signaled by a blinking white light.

Press and hold the MFB button again for 3 seconds until you hear the start up sound and the red and white LED lights flash. Now your handset is in search mode and is ready to be paired.

The search mode will last up to 60 seconds. If it can't pair a device within this time, it will go into standby mode.

Make sure your smartphone is within 3 feet of your handset.



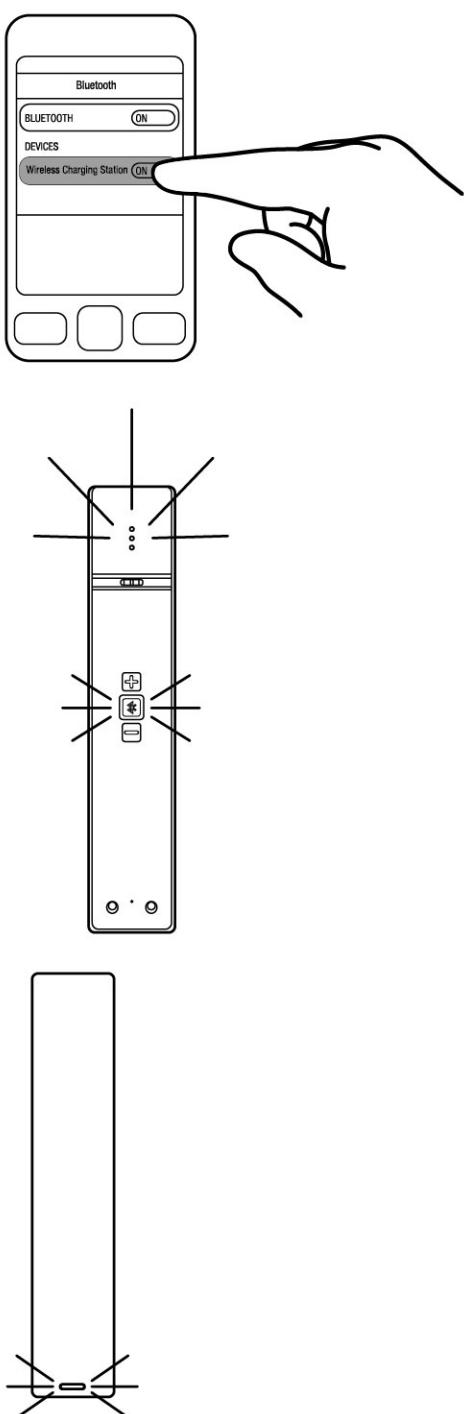
While the BLUETOOTH® Wireless function is activated on your mobile phone, search for new BLUETOOTH® devices. (Refer to your user smartphone's manual for directions)

### PAIRING THE BLUETOOTH® HANDSET WITH YOUR PHONE

Select "Wireless Charging Station" on the device list. Enter "0000" if a password is required.

You will hear a sound from the handset and the white LED light will turn on when the pairing process is complete.

On the back of the handset a white LED light will also turn on.



### MAKING CALLS, ANSWERING CALLS, ENDING CALLS

**MAKING CALLS**  
Dial a number on your smartphone. When the call connects, you can use either your mobile phone or the handset. A blue light will stay on when a call is in progress.

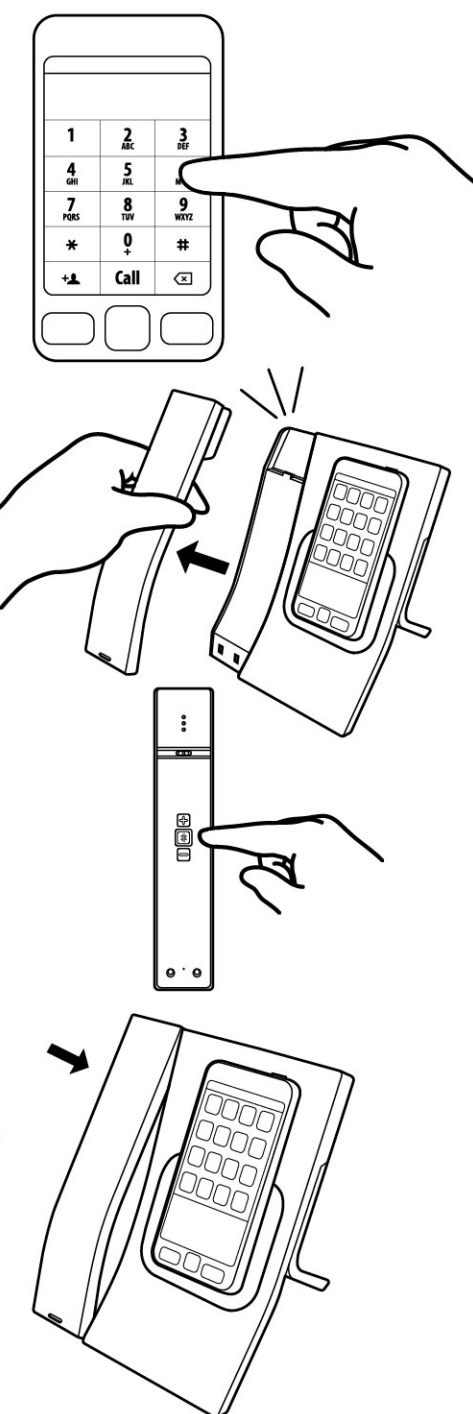
Note: Your smartphone doesn't need to be on the adapter in order to function with the handset. Together, the handset and your phone can go wherever you go.

**ANSWERING CALLS**  
When charging, lift the handset off the base station to answer a call. If the handset is off of the base, press the MFB button once to answer the call.

You can answer calls directly from your phone, while paired to the Cell Phone Charger. If you have an iPhone using iOS. Press the MFB button on the handset to switch your call from your phone to the handset.

If you have a smartphone using the Android operating system, when you press the answer button the call will automatically go to the handset.

**ENDING CALLS**  
When charging, place the handset on the base station or press the MFB button once to hang up. You can also end a call using your mobile phone's "End Call" feature.



### ADDITIONAL FUNCTIONS

**REJECTING CALLS**  
Press and hold the MFB button for 1 second when a call is coming in.

**REDIALING THE LAST NUMBER**  
Double press the MFB button to redial the last number.

**VOICE ACTIVATED DIALING**  
Before using this function, make sure your smartphone supports this. You need to set up "voice-tags". Press and hold the VOLUME UP button for 2 seconds, and you will hear an alert tone.

**MUTE AND UNMUTE**  
During a call, press and hold VOLUME DOWN for 2 seconds to mute the phone. You will hear a beep indication every 5 seconds while the handset is on mute. Press and hold the button for 2 seconds again to unmute. You will hear a high toned double beep alert when you mute or unmute.

**CALL WAITING**  
During a call, double press the MFB button to hold the current call and answer an incoming call. You will hear two low pitched beep alerts when a call is incoming. Double press again to toggle between calls.  
Note: Mute and call waiting beeps are different tones.

**VOLUME CONTROL**  
During a call, press the VOLUME UP button to increase the volume and the VOLUME DOWN button to decrease it. When you change the volume to the highest or lowest levels, you will hear an alert tone. Volume alert tones are not compatible with all Android devices. If you have an iPhone, you can adjust the ringer volume by pressing the VOLUME UP and DOWN buttons when the phone is ringing.

**RINGTONES**  
If you have an iPhone, your smartphone's ringtone can be heard through the earpiece during an incoming call.

**AUTOMATIC RECONNECTION**  
The handset can pair two BLUETOOTH® enabled devices, and is designed to reconnect to the last connected device in its memory. If your smartphone is out of range (30 feet), the BLUETOOTH® will be disconnected and the white LED light will flash every 3 seconds signaling standby mode. If you turned off BLUETOOTH® on your smartphone and it was one of the 2 last phones paired to the handset then follow the following steps. Make sure your smartphone's BLUETOOTH® is turned on and the handset is on standby then press the MFB button once. If your handset still has not reconnected, hold the MFB button on the handset for 5 seconds to turn it off, hold the MFB button on the handset for 5 seconds to turn it back on, and then press and hold the MFB button again for 3 seconds to start BLUETOOTH® pairing.

**LED INDICATION**  
Blue LED is on – Smartphone is in use.  
Red LED is on – Handset is charging. The red LED will turn off when the handset is fully charged.  
Red LED is flashing – Handset battery is running low.  
Red/White LEDs flash alternately – BLUETOOTH® is in search mode.  
Red/White LEDs flash simultaneously – Smartphone is ringing.  
White LED is on – BLUETOOTH® is connected to Cell Phone Charger. The handset will go on standby mode when not in use.

The Bluetooth® word mark and logos are registered trademarks owned by Bluetooth SIG, Inc.  
iPhone® is a registered trademark of Apple Inc.  
ANDROID™ is a trademark of Google Inc. Samsung and Samsung Galaxy S are both registered trademarks of Samsung Electronics Co., Ltd.  
Smart Phones must have built-in BLUETOOTH® wireless technology to connect. This product is not affiliated with or endorsed by any of the above mentioned trademarks or companies.

**FC** This device complies with Part 15 of the FCC Rules. Operation is subject to the following two conditions:  
(1) This device may not cause harmful interference, and (2) this device must accept any interference received, including interference that may cause undesired operation.

Warning: Changes or modifications to this unit not expressly approved by the party responsible for compliance could void the user's authority to operate the equipment.

NOTE: This equipment has been tested and found to comply with the limits for a Class B digital device, pursuant to Part 15 of the FCC Rules. These limits are designed to provide reasonable protection against harmful interference in a residential installation. This equipment generates, uses and can radiate radio frequency energy and, if not installed and used in accordance with the instructions, may cause harmful interference to radio communications. However, there is no guarantee that interference will not occur in a particular installation. If this equipment does cause harmful interference to radio or television reception, which can be determined by turning the equipment off and on, the user is encouraged to try to correct the interference by one or more of the following measures:

- Reorient or relocate the receiving antenna.
- Increase the separation between the equipment and receiver.
- Connect the equipment into an outlet on a circuit different from that to which the receiver is connected.
- Consult the dealer or an experienced radio/TV technician for help.

The artwork and design of this manual are protected by US copyright law and may not be reproduced, distributed, displayed, published or used for any purpose without prior written permission. It is not permitted to alter, remove or reproduce any trademarks or copyright notice from this package.



© Sharper Image. All Rights Reserved.  
SHARPER IMAGE® name and logo are registered trademarks manufactured and marketed by Merch Source, LLC under license. All other logos and trademarks are proprietary to their respective owners. The artwork and design of this package are protected by US copyright law and may not be reproduced, distributed, displayed, published or used for any purpose without prior written permission. Altering, removing or reproducing any of the trademarks or copyright notices on this package is not permitted.  
©2014 MerchSource, LLC. All rights reserved.  
Distributed by MerchSource, LLC, Irvine, CA 92618.  
PATENT PENDING.  
For technical support, please visit [www.merchsource.com](http://www.merchsource.com) or call 1-800-374-2744

Printed in China

5

6

7

8

9