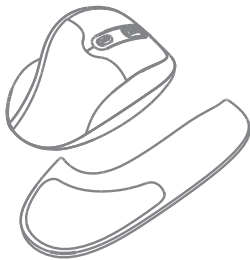


NEWTRAL 3 MOUSE

Programmable Ergonomic Mouse (Wireless Version)
Model: N300BWM



QuickGuide English
www.newtralmouse.com

1

FEATURES

- Interface: 2.4 GHz Wireless
- Button: 6 Buttons Programmable(Left & Right Click, Back & Forward, DPI Switch, Scroll Wheel and Middle Button)
- Hand Orientation: Right
- DPI Resolution: Optical Type 800/1600/2400
- Dimensions: 113.81 x 79.63 x 52.59mm
- Note: Battery: 1 X AA

REQUIREMENT

- Operating system: Windows 7/8/10
Mac(Not Programmable for Mac System)
- Available USB port

DESCRIPTION



2

HARDWARE INSTALLATION

- Turn on your computer.



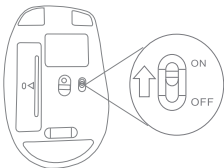
- Pull out the USB Receiver from the bottom of Newtral 3 mouse and insert it into your computer's USB port. Your operating system will automatically detect and assign a driver.



Wireless USB Receiver

3

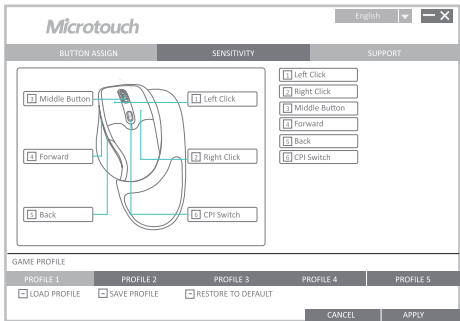
- Turn on your mouse with the ON/OFF switch and it will automatically pair with the inserted USB receiver.



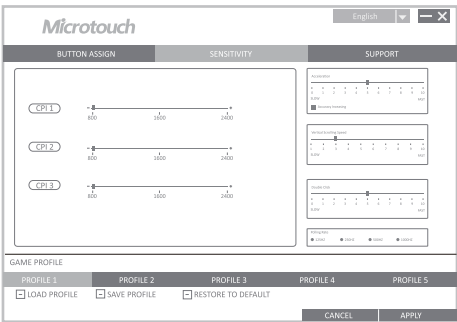
NEWTRAL 3 MOUSE SOFTWARE INSTRUCTION

- Download the software from web:<http://www.newtralmouse.com/download.html>

- Once you have followed the installation steps, go into your "system tray" by clicking on the arrow located to the left of your Windows clock and click on the Microtouch Newtral Mouse Wireless icon.
- You can set the language you want in the top right-hand corner of the menu. The configuration menu has three tabs: "Button assign", "Sensitivity" and "Support". The options available on the tabs are explained below.

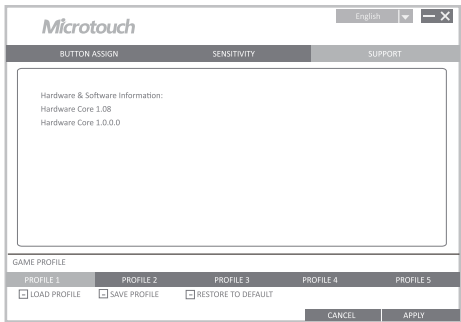


4



5

- Click on "BUTTON ASSIGN" to change your mouse button function and click "APPLY" to save the setting. By using the "Restore to default" button you can return all setting to factory default Setting.
- Click on "SENSITIVITY" to change the speed of your mouse cursor as well as adjust DPI settings and click "APPLY" to save the setting. By using the "Restore to default" button you can return all setting to factory default Setting.
- Click on "SUPPORT" you may find the hardware and software information.



6

FCC STATEMENT :

This device complies with Part 15 of the FCC Rules. Operation is subject to the following two conditions:

- (1) This device may not cause harmful interference, and
- (2) This device must accept any interference received, including interference that may cause undesired operation.

Warning: Changes or modifications not expressly approved by the party responsible for compliance could void the user's authority to operate the equipment.

NOTE: This equipment has been tested and found to comply with the limits for a Class B digital device, pursuant to Part 15 of the FCC Rules. These limits are designed to provide reasonable protection against harmful interference in a residential installation. This equipment generates uses and can radiate radio frequency energy and, if not installed and used in accordance with the instructions, may cause harmful interference to radio communications. However, there is no guarantee that interference will not occur in a particular installation. If this equipment does cause harmful interference to radio or television reception, which can be determined by turning the equipment off and on, the user is encouraged to try to correct the interference by one or more of the following measures:

- Reorient or relocate the receiving antenna.

- Increase the separation between the equipment and receiver.

- Connect the equipment into an outlet on a circuit different from that to which the receiver is connected.

- Consult the dealer or an experienced radio/TV technician for help.