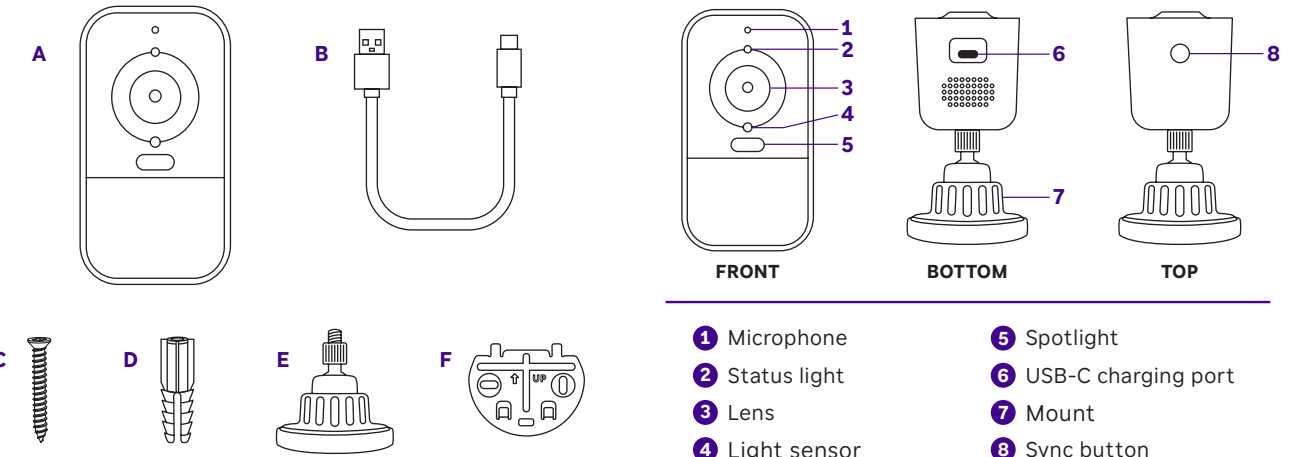


What's included

- A** Roku Battery Camera
- B** USB-A to USB-C camera charging cable (indoor use only)
- C** 22mm M3 screws (x2)
- D** Anchors (x2)
- E** Mount
- F** Wall plate
- G** Window decal

What you'll need

- Phillips screwdriver
- If using anchors, you'll need:
 - Drill (bit size 2.5mm or 1/8 inch)
 - Hammer



- 1** Microphone
- 2** Status light
- 3** Lens
- 4** Light sensor
- 5** Spotlight
- 6** USB-C charging port
- 7** Mount
- 8** Sync button

Let's get started

- STEP 1: Start charging your camera**
Plug in your camera using a wall charger. It can take 2-5 hours to charge fully.
Tip: For faster charging, use a high-power wall charger (like those used to charge tablets or laptops).
- STEP 2: Download the Roku Smart Home app**
Scan the QR code below to download the Roku Smart Home app on your smartphone. Sign in with your Roku account or create one.
- STEP 3: Set up your camera**
In the Roku Smart Home app, tap "Add Device" or "+" and find "Battery Camera."
- STEP 4: Place and mount your camera**
Follow the app instructions for camera setup and step by step mounting instructions.



For the best experience, charge your camera before setup

To charge camera: Connect the charging cable to the USB-C port on the bottom of your camera.

You'll need

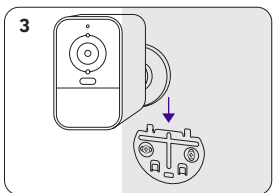
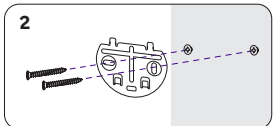
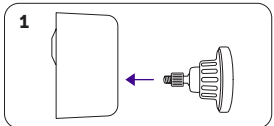


Smartphone & app

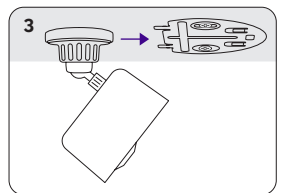
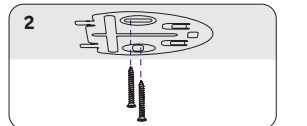
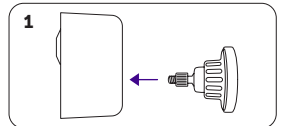


Messaging & data rates may apply.

WALL MOUNT



CEILING MOUNT



What's that light mean?

Before Setup

Blue - Pulsing	Ready to connect
Yellow - Slow blinking	Booting up/Updating firmware
White - Fast blinking	Connecting to network

After Setup

Red - Blinking (3 times)	Error
Green	Fully charged

Status lights are located on the camera.
Use direct sunlight to keep your camera charged with Roku Solar Panel (sold separately).



More features are waiting

Unlock the full potential
of your camera with a
Roku Smart Home Subscription.

Learn more at go.roku.com/rokusmarthome

Need help?



Setup
videos



Common
questions



Tips and
tricks

Visit go.roku.com/cameras

Roku

© 2025 Roku, Inc. All rights reserved. Roku, the Roku logo, Roku Smart Home, and the Roku Smart Home logo are the trademarks or registered trademarks of Roku, Inc.



Roku™ Battery Camera

Quick Start Guide

