

15.19 Labeling requirements.

This device complies with part 15 of the FCC Rules. Operation is subject to the following two conditions: (1) This device may not cause harmful interference, and (2) this device must accept any interference received, including interference that may cause undesired operation.

15.21 Information to user.

Any Changes or modifications not expressly approved by the party responsible for compliance could void the user's authority to operate the equipment.

15.105 Information to user.

This equipment has been tested and found to comply with the limits for a Class B digital device, pursuant to Part 15 of the FCC Rules. These limits are designed to provide reasonable protection against harmful interference in a residential installation. This equipment generates uses and can radiate radio frequency energy and, if not installed and used in accordance with the instructions, may cause harmful interference to radio communications. However, there is no guarantee that interference will not occur in a particular installation. If this equipment does cause harmful interference to radio or television reception, which can be determined by turning the equipment off and on, the user is encouraged to try to correct the interference by one or more of the following measures:

- Reorient or relocate the receiving antenna.
- Increase the separation between the equipment and receiver.
- Connect the equipment into an outlet on a circuit different from that to which the receiver is connected.
- Consult the dealer or an experienced radio/TV technician for help.

Specific Absorption Rate (SAR) information:

This product meets the government's requirements for exposure to radio waves. The guidelines are based on standards that were developed by independent scientific organizations through periodic and thorough evaluation of scientific studies. The standards include a substantial safety margin designed to assure the safety of all persons regardless of age or health.

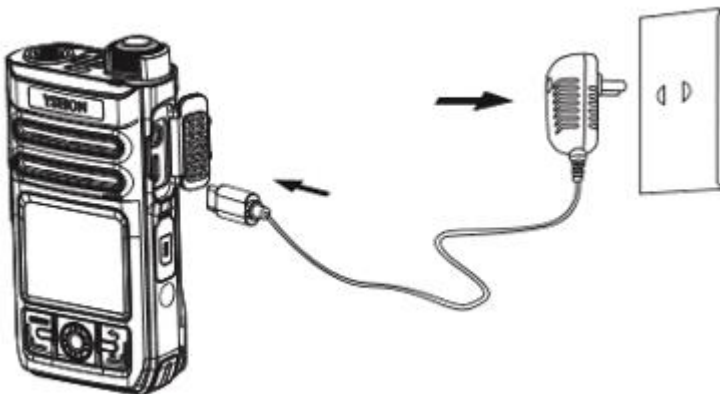
FCC RF Exposure Information and Statement The SAR limit of USA (FCC) is 1.6 W/kg averaged over one gram of tissue. This device was tested for typical body-worn operations with the back of the handset kept 0mm from the body and 25mm front of face. To maintain compliance with FCC RF exposure requirements, use accessories that maintain a 0mm separation distance between the user's body and the back of the handset. The use of belt clips, holsters and similar accessories should not contain metallic components in its assembly. The use of accessories that do not satisfy these requirements may not comply with FCC RF exposure requirements, and should be avoided.

Body-worn Operation

This device was tested for typical body-worn operations. To comply with RF exposure requirements, a minimum separation distance of 0mm for body and 25 front of face worn must be maintained between the user's body, including the antenna. Third-party belt-clips, holsters, and similar accessories used by this device should not contain any metallic components. Body-worn accessories that do not meet these requirements may not comply with RF exposure requirements and should be avoided. Use only the supplied or an approved antenna.

Battery Information

- The battery pack is not fully charged when purchased, pls charge it before first use.
- Do not short the battery to avoid damaging the battery, generating heat and causing a fire.
- Do not place the battery at high temperatures or throw it into a fire to avoid an explosion.
- If the battery is not used for a while, discharge it and store it in a dry, dark and cool place.
- Stop using the battery and cradle when it is damaged or significantly aged.
- Stop using the battery and charger when they are damaged or significantly aged.
- Return the used batteries to the supplier or to the designated collection point, not to household waste.



If the battery is damaged, avoid to touch the contents. If it gets contaminated with the skin, rinse it with plenty of water. If necessary, ask for medical advice.

Charger Information

- To improve charging efficiency and ensure charging safety, please use 100-240V AC.
- Do not short-circuit the charger, or it would cause electric shock, smog, and damage to the charger.
- Do not use the charger when the cable was damaged, or it would result in fire and electric shock.
- Please clean the dust accumulated on the power outlet in time.
- Do not put the water in the side of charger to prevent the water from spilling and causing overheating, leakage and malfunction.
- Do not disassemble or modify the charger, or it would result in personal injury, electric shock, fire or damage to the charger.
- Do not use the charger in places with high temperatures such as bathrooms, or it would result in electric shock, fire or damage to the charger.
- Do not touch the charger, battery, or power outlet with wet hands, or it would result in electric shock.
- Do not place heavy objects on the power cable, or attempt to modify the power cable, or it would result in electric shock or fire.
- Unplug the power plug from the socket before cleaning and maintenance. Hold the charger when pulling the plug. The hard-wire power cable may damage the power cable and may cause electric shock or fire.

Charging the Battery

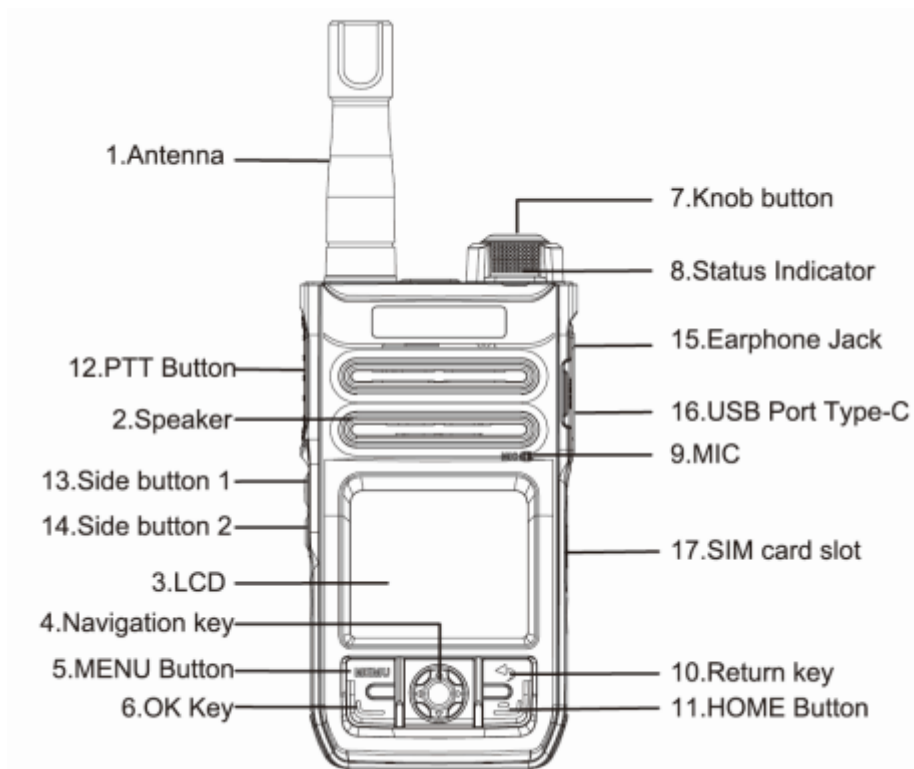
Charge the battery with the specified charger and charge the battery as follows:

1. Insert the Type-C plug of the switching power supply into the Type-C jack on the right side of the radio.
 2. When the radio is turned on, connect the power supply to the AC power output socket. You can see that the radio status indicator (LED) turns red and flashes slowly, indicating that the power supply is normally connected; when the status indicator (LED) is red and be off, it turns into green light and flashes slowly, which means full charge (The battery capacity is above 90%).
 3. When the radio is in the off state, connect the power supply to the AC power output socket. Firstly, the screen will light up and display the battery capacity icon. And you can also see the radio status indicator (LED) turns red, which means the power supply is normally connected; when the radio status indicator (LED) is red off and the green light is always on, indicating full charge (The battery capacity is above 90%).
 4. After finish charging, remove the switching power supply and the Type-C charging cable from the power outlet.
- (Note: Please turn off the radio when charging.)

Radio Overview

Overview

This network radio can be used in the LTE 4G full Net-com network. The radio has powerful performance and professional functions. With the high-speed broadband connection brought by the latest 4G technology, this radio can share your life with others in real time.



Intercom Introduction

Parts	Function
1. Antenna	LTE 4G main antenna
2. Speaker	Electrical signal is converted into an acoustic signal
3. LCD	Display UI interface
4. Navigation key	In the standby interface, you can select the application on the interface.
5. MENU Button	Enter menu
6. OK Key	Confirm button
7. Knob button (Volume button/Long press switch)	Press and hold the button for 3 seconds, turn the volume counterclockwise +, rotate the volume clockwise - Short press on/off screen

8 Status Indicator	View product specifications in detail
9.MIC	Convert sound into audio
10.Return key	Return to the previous menu, no effect under the main menu; single call mode long press to exit single call when under single call.
11.HOME Button	Touch on any interface (except the main menu), return to the main menu.
12.PTT Button	Call application and release button, press to talk, release to finish.
13.Side button 1	Short press to continuously broadcast the current group, current user, current remaining battery capacity; long press to enter one key alarm.
14.Side button 2	Short press to switch groups, long press undefined.
15.Earphone Jack	
16.Program(Charge) Port Type-C	Used to connect to computer PC software or to charge
17.SIM card slot	

Getting started

Install battery and SIM card

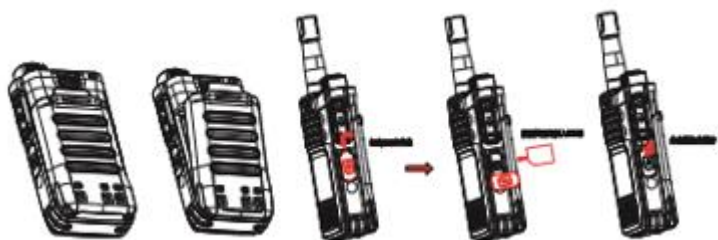
Please insert a valid SIM card into the radio before using.

Everything related to establishing a network connection is recorded in the metal plane area of the SIM card, the related phone book information also recorded on the card. The SIM card can be used in any LTE 4G full-network radio (the new radio comes with a SIM card).

1. Open the SIM card plug.
2. Place the SIM card in the card slot and pay attention to the bevel direction.
3. Cover the SIM card plug.
4. Hold the battery and align the bottom of the battery against the bottom of the transceiver.
5. Hold the battery and push the battery down with the middle finger and forefinger until the battery is locked by the battery button.

Note:

- Please turn off the radio before inserting or removing the SIM card.
- Avoid touching the metal flat area to prevent loss and damage to the information in the card and place the SIM card away from electromagnetic fields.



Remove the battery

1. To remove the battery pack, push the battery latch up with the thumb.
2. When battery is released from the intercom, remove the battery.

Basic Operation

Power On and Power Off

Press and hold the button for 3 seconds until power ON the intercom, press and hold the button again to choose “Power off” to power off the intercom.

Display Off

Under the bright screen display, short press the knob button to enter the off-screen state, or the intercom will automatically display off after a period of inactivity.

Display On

Short press the knob to wake up the display.

Status Bar

The status bar displays battery capacity, time, SIM card, registered network status information, etc.

Push-To-Talk function

After the start-up, the radio platform software is started by default, and automatically enter the default waiting group.

Single Call

Under the standby status (PTT), short press the DOWN key to enter the group list, short press OK key to enter the current group member list, users can not modify this information. Then under the group member list, you can select the person who you want to call, press OK to confirm, after establishing the connection (red light is always on), press PTT button to directly call (single call), Press OK key to hang up.

Group Cal

Under the standby status (PTT), short press the side button 2 to enter the wanted group, and there is a TTS voice sounds around "*** group". At the same time, the group becomes a waiting group, press PTT to talk, but temporarily not receive other group information including the default group.

One key alarm

Press and hold the side button 1 to enter the one-key alarm button for 3 seconds to activate the one-key alarm function.

Note: This function would be invalid if the VT Console do not give alarm number to radio.

This function would be invalid if the radio do not have an alarm button.

Enter the APK settings

Under the standby status (PTT), short press the UP button, will display the setting interface, which can set personal information, voice call settings, sleep mode, PTT incoming call option, Dynamic PTT, PTT to activate screen settings and so on.

ROM settings

Short press the MENU button to enter the ROM setup menu, you can set the network set, WLAN, BT, Location, Boot sound, phone state, etc.

Establish a wireless connection

Set up the WLAN connect

WLAN Connect

1. Under the "Settings", press the UP/DOWN key to choose WLAN, press OK to confirm and enter the WLAN mode, now you can setup to connect the WLAN.
2. Under the WLAN, press OK button to turn ON or turn Off the WLAN. And you can see the "Connected wlans/Available wlans/saved wlans".
3. Press the UP/DOWN button to choose the WLAN you wanted, input the correct password and press OK button to confirm and connect.

Set up the BT connect

1. Under the "Settings", press OK button and press UP/DOWN button to choose BT, and then press OK to enter BT settings;
2. Under BT, press OK button to turn on the BT and your intercom will show the list within the search range.
3. Press UP/DOWN button to choose the device you want to connect, press OK to connect;

- If you choose the “Discoverable” as on, then other device can search your Bluetooth also.
- Under the password interface, press OK to confirm and enter the keyboard, you could long press the side key 2 to switch the Input.

Intercom Land on

(1) If detect the account information and connect the network normally, the intercom(LED) flashes green. After automatic login, the intercom will also TTS broadcast “Welcome to the virtual trunk, went through ** group”

(2) If the intercom do not detect the account information, which will display “”

If the intercom display “Network is not available”, pls check the SIM card is plugged in, whether the SIM ICC card expires, and whether the account is activated.

- If the account settings are incorrect, you can manually set the account information by using the agent or management platform.
- After successfully logging in to the account, you can use PTT to make group calls.

Intercom Operation

一. Basic Operation

1. Under the state of bright screen, rotate the volume knob to adjust the volume. Clockwise the volume knob to increase the volume, and counter-clockwise the volume knob to decrease the volume;

Under the state of bright screen, short press the “knob” to enter the off-screen state(You can not adjust the volume under off-screen status). Similarly, when the screen is off, press the “knob” to wake up the screen; press and hold the knob 3S, the prompt box will pop up “Power off” or “Reboot”.

2. Under the state of bright screen, short press MENU to enter the Setting list, press UP and DOWN to set or view “network set”, “WLAN”, “BT”, “Location”, “boot sound”, “phone state”;

3. Under PTT state, short press the Up button to enter APK settings, you could set up the “Personal Information”, “Voice call settings”, “GSM-2G/Edge”, “Sleep mode”, “PTT incoming call option”, “Dynamic PTT”, “PTT to activate screen settings”, “About”, “Exit”;

4. Under PTT state, press Down button to enter Intercom group list, press Up/Down button to choose the group.

4.1 The first method, short press the OK button to enter member list, press Up/Down button to choose the online member, you can press PTT to active the temporary call, once the other party answers, you can start the call. Press the back button or the OK button again to exit the temporary intercom group. Or you can press OK button to enter Dial interface, press OK button to do voice call, once the other party answers, you can start the call, press the back button again or the OK button to exit the voice call.

4.2 The second method, long press the OK button to enter the selected group.

5. Short press the side button 2 to continuously broadcast the current group, current user and the current battery capacity, and long press side button 2 to active the one key alarm function;

6. Short press the side button 2 to quickly switch the group;

二. Menu options, under the home page, press UP/DOWN button to choose PTT or Settings.

A. PTT, you can press OK to enter and choose the related call functions;

B. Settings, you press OK to enter and press Up/Down button to set or check the “network set”, “WLAN”, “BT”, “Location”, “Boot sound”, “phone state”.

Safety Precautions

Safety warnings and precautions

Please use the radio correctly. When making or receiving a call, hold the walkie-talkie like you use the wired telephone,

then speak directly to the MIC and make sure the walkie-talkie is at an appropriate distance from your body. Some people may be prone to seizures or dizziness under flashing lights (such as watching TV). If you have a similar history of illness, consult your doctor before using the flash function.

Keep the radio out of the children reach so that children don't use it as a toy, causing personal injury.

Note the radio using precautions when driving.

Please follow the relevant traffic regulations when driving and pay attention to traffic safety.

Medical Equipment

Care should be taken when using radio next to certain medical devices such as pacemakers: keep a distance of at least 20 cm between the radio and these medical devices; Don't put the radio in your chest pocket; Should be used to listen to the ears on different sides of the pacemaker to reduce potential interference; If necessary, please turn off the radio. If you have any other questions, please consult the medical equipment manufacturer before using. Some digital radios may interfere with some hearing aids. If these disturbances occur, contact the hearing aid manufacturer for a solution.

If you have other medical equipment (such as implanted cochlea), consult with the manufacturer to ensure that these devices are capable of shielding the surrounding RF signals.

In places with special requirements such as hospitals or recuperation, please pay attention to the restrictions on the use of radios. If necessary, please turn off the radio.

Your Radio

You can only use the original accessories or the accessories specified by the factory. Use any unapproved accessories may affect the radio performance and violate the warranty terms and the relevant national regulations on communication terminal products, and even cause personal injury.