

FCC TEST REPORT
for
SHENZHEN HERO LOYAL MICROELECTRONICS CO., LTD

Wireless Keyboard
Model No.: KMG1005, KMG1006, KMG1008,
KG1006, G700E, G701E, G702E

Prepared for : SHENZHEN HERO LOYAL MICROELECTRONICS CO.,
LTD
Address : 604, Block A, Developing Building, Tsing-hua High-tech Park,
Keyuan Road, Nanshan District, Shenzhen, China

Prepared By : Shenzhen Anbotek Compliance Laboratory Limited
Address : 1/F., Building 1, SEC Industrial Park, No.0409 Qianhai Road,
Nanshan District, Shenzhen, Guangdong, China
Tel: (86) 755-26066544
Fax: (86) 755-26014772

Report Number : 201308902F
Date of Test : Aug. 27~Sept. 06, 2013
Date of Report : Sept. 09, 2013

TABLE OF CONTENTS

Description

Page

Test Report

1. GENERAL INFORMATION.....	4
1.1. Description of Device (EUT).....	4
1.2. Auxiliary Equipment Used during Test.....	5
1.3. Description of Test Facility.....	6
1.4. Measurement Uncertainty.....	6
2. TEST PROCEDURE.....	7
3. CONDUCTED LIMITS.....	8
3.1. Block Diagram of Test Setup.....	8
3.2. Power Line Conducted Emission Measurement Limits (15.207).....	8
3.3. Configuration of EUT on Measurement.....	8
3.4. Operating Condition of EUT.....	9
3.5. Test Procedure.....	9
3.6. Power Line Conducted Emission Measurement Results.....	9
4. RADIATION INTERFERENCE.....	12
4.1. Requirements (15.249, 15.209):.....	12
4.2 Test Procedure.....	12
4.3 Test Results.....	12
5. OCCUPIED BANDWIDTH.....	18
5.1. Requirements (15.249):.....	18
5.2. Test Procedure.....	18
5.3. Test Configuration:.....	18
5.4. Test Results.....	18
6. PHOTOGRAPH.....	22
6.1. Photo of Power Line Conducted Emission Measurement.....	22
6.2. Photo of Radiation Emission Test.....	23

APPENDIX I (External Photos) (2 Pages)

APPENDIX II (Internal Photos) (3 Pages)

TEST REPORT

Applicant : SHENZHEN HERO LOYAL MICROELECTRONICS CO., LTD
Manufacturer : SHENZHEN HERO LOYAL MICROELECTRONICS CO., LTD
EUT : Wireless Keyboard
Model No. : KMG1005, KMG1006, KMG1008, KG1006, G700E, G701E, G702E
Serial No. : N/A
Trade Mark : Loshine
Rating : DC 3V, 30mA Battery

Measurement Procedure Used:

FCC Part15 Subpart C, Paragraph 15.207, 15.249 & 15.209

The device described above is tested by Shenzhen Anbotek Compliance Laboratory Limited to determine the maximum emission levels emanating from the device and the severe levels of the device can endure and its performance criterion. The measurement results are contained in this test report and Shenzhen Anbotek Compliance Laboratory Limited is assumed full of responsibility for the accuracy and completeness of these measurements. Also, this report shows that the EUT (Equipment Under Test) is technically compliant with the FCC Part 15 Subpart C requirements.

This report applies to above tested sample only and shall not be reproduced in part without written approval of Shenzhen Anbotek Compliance Laboratory Limited.

Date of Test : Aug. 27~Sept. 06, 2013

Prepared by :



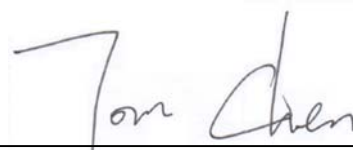
(Tested Engineer / Rock Zeng)

Reviewer :



(Project Manager / Amy Ding)

Approved & Authorized Signer :



(Manager / Tom Chen)

1. GENERAL INFORMATION

1.1. Description of Device (EUT)

EUT : Wireless Keyboard

Model Number : KMG1005, KMG1006, KMG1008, KG1006, G700E, G701E, G702E
(Note: All samples are the same except the model number & shape of appliances, so we prepare “KMG1005” for EMC test only.)

Test Power Supply : DC 3V

Frequency : 2405-2472MHz

Channel Space 1MHz

No. of Channels : 68

Antenna Specification : Printed Antenna:1.76 dBi

Applicant : SHENZHEN HERO LOYAL MICROELECTRONICS CO., LTD
Address : 604, Block A, Developing Building, Tsing-hua High-tech Park, Keyuan Road, Nanshan District, Shenzhen, China

Manufacturer : SHENZHEN HERO LOYAL MICROELECTRONICS CO., LTD
Address : 604, Block A, Developing Building, Tsing-hua High-tech Park, Keyuan Road, Nanshan District, Shenzhen, China

Date of receiver : Aug. 27, 2013

Date of Test : Aug. 27~Sept. 06, 2013

1.2.Auxiliary Equipment Used during Test

PC	: Manufacturer: DELL M/N: OPTIPLEX 380 S/N: 1J63X2X CE , FCC: DOC
MONITOR	: Manufacturer: DELL M/N: E170Sc S/N: CN-00V539-64180-055-0UPS CE , FCC: DOC
MOUSE	: Manufacturer: DELL M/N: M-UARDEL7 S/N: N/A CE , FCC: DOC Cable: 1m, unshielded
Printer	: Manufacturer:Brother M/N: MFC-3360C S/N: N/A CE, FCC:DOC
Power Line	: Non-Shielded, 1.5m
VGA Cable	: Non-Shielded, 1.5m
Network Cable	: Non-Shielded, 1.5m

1.3. Description of Test Facility

The test facility is recognized, certified, or accredited by the following organizations:

CNAS - LAB Code: L3503

Shenzhen Anbotek Compliance Laboratory Limited., Laboratory has been assessed and in compliance with CNAS/CL01: 2006 accreditation criteria for testing laboratories (identical to ISO/IEC 17025:2005 General Requirements) for the Competence of Testing Laboratories.

FCC-Registration No.: 752021

Shenzhen Anbotek Compliance Laboratory Limited, EMC Laboratory has been registered and fully described in a report filed with the (FCC) Federal Communications Commission. The acceptance letter from the FCC is maintained in our files. Registration 752021, July 10, 2013.

IC-Registration No.: 8058A-1

Shenzhen Anbotek Compliance Laboratory Limited., EMC Laboratory has been registered and fully described in a report filed with the (IC) Industry Canada. The acceptance letter from the IC is maintained in our files. Registration 8058A-1, February 22, 2013.

Test Location

All Emissions tests were performed at
Shenzhen Anbotek Compliance Laboratory Limited. at 1/F., Building 1, SEC Industrial Park, No.0409 Qianhai Road, Nanshan District, Shenzhen, Guangdong, China

1.4. Measurement Uncertainty

Radiation Uncertainty : Ur = 4.3dB

Conduction Uncertainty : Uc = 3.4dB

2. Test Procedure

GENERAL: This report shall NOT be reproduced except in full without the written approval of Shenzhen Anbotek Compliance Laboratory Limited. The EUT was transmitting a test signal during the testing.

RADIATION INTERFERENCE: The test procedure used was ANSI STANDARD C63.4-2009 using a spectrum analyzer with a pre-selector. The analyzer was calibrated in dB above a microvolt at the output of the antenna. The resolution bandwidth was 100KHz and the video bandwidth was 300KHz up to 1.0GHz and 1.0MHz with a video BW of 3.0MHz above 1.0GHz. The ambient temperature of the EUT was 74.3oF with a humidity of 69%.

FORMULA OF CONVERSION FACTORS: The Field Strength at 3m was established by adding the meter reading of the spectrum analyzer (which is set to read in units of dBuV) to the antenna correction factor supplied by the antenna manufacturer. The antenna correction factors are stated in terms of dB. The gain of the Preselector was accounted for in the Spectrum Analyzer Meter Reading.

Example:

Freq (MHz) METER READING + ACF = FS
20 dBuV + 10.36 dB = 30.36 dBuV/m @ 3m

ANSI STANDARD C63.4-2009 10.1.7 MEASUREMENT PROCEDURES: The EUT was placed on a table 80 cm high and with dimensions of 1m by 1.5m. The EUT was placed in the center of the table (1.5m side). The table used for radiated measurements is capable of continuous rotation.

When an emission was found, the table was rotated to produce the maximum signal strength. At this point, the antenna was raised and lowered from 1m to 4m. The antenna was placed in both the horizontal and vertical planes.

3. Conducted Limits

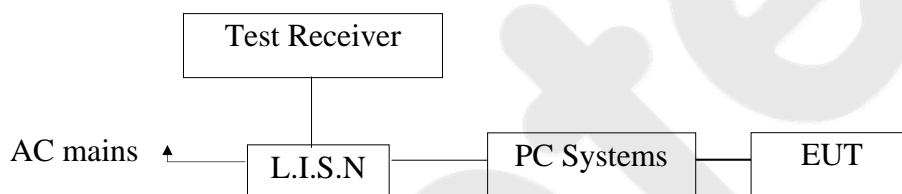
Test Equipment

Item	Equipment	Manufacturer	Model No.	Serial No.	Last Cal.	Cal. Interval
1.	Two-Line V-network	Rohde & Schwarz	ENV216	100055	Apr. 23, 2013	1 Year
2.	EMI Test Receiver	Rohde & Schwarz	ESCI	100627	Apr. 23, 2013	1 Year
3.	RF Switching Unit	Compliance Direction	RSU-M2	38303	Apr. 23, 2013	1 Year

Conduction Uncertainty : $U_c = 3.4\text{dB}$

3.1. Block Diagram of Test Setup

3.1.1. Block diagram of connection between the EUT and simulators



(EUT: Wireless Keyboard)

3.2. Power Line Conducted Emission Measurement Limits (15.207)

Frequency MHz	Limits dB(μV)	
	Quasi-peak Level	Average Level
0.15 ~ 0.50	66 ~ 56*	56 ~ 46*
0.50 ~ 5.00	56	46
5.00 ~ 30.00	60	50

Notes: 1. *Decreasing linearly with logarithm of frequency.

2. The lower limit shall apply at the transition frequencies.

3.3. Configuration of EUT on Measurement

The following equipments are installed on Power Line Conducted Emission Measurement to meet the commission requirement and operating regulations in a manner which tends to maximize its emission characteristics in a normal application.

EUT : Wireless Keyboard
Model Number : KMG1005
Applicant : SHENZHEN HERO LOYAL MICROELECTRONICS CO., LTD

3.4. Operating Condition of EUT

3.4.1. Setup the EUT and simulator as shown as Section 3.1.

3.4.2. Turn on the power of all equipment.

3.4.3. Let the EUT work in test mode (ON) and measure it.

3.5. Test Procedure

The EUT system is connected to the power mains through a line impedance stabilization network (L.I.S.N.). This provides a 50ohm coupling impedance for the EUT system. Please refer the block diagram of the test setup and photographs. Both sides of AC line are checked to find out the maximum conducted emission. In order to find the maximum emission levels, the relative positions of equipment and all of the interface cables shall be changed according to FCC ANSI C63.4-2009 on Conducted Emission Measurement.

The bandwidth of test receiver (ESCI) set at 9KHz.

The frequency range from 150KHz to 30MHz is checked.

The test results are reported on Section 3.6.

3.6. Power Line Conducted Emission Measurement Results

PASS.

The frequency range from 150KHz to 30 MHz is investigated.

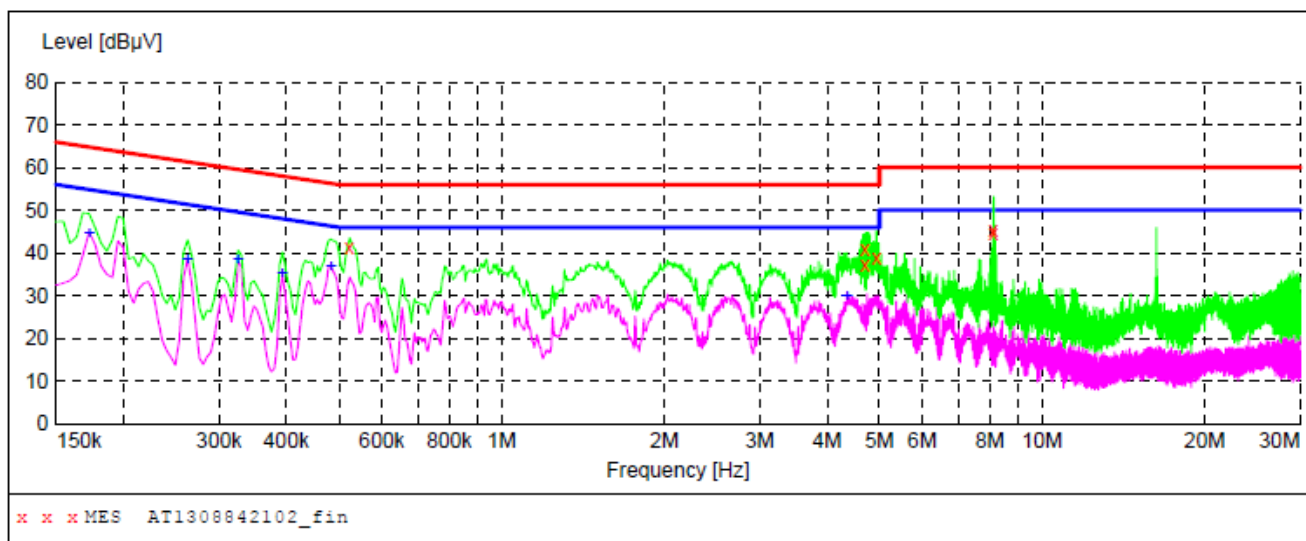
Please refer the following pages.

CONDUCTED EMISSION TEST DATA

EUT: Wireless Keyboard M/N: KMG1005
Operating Condition: ON
Test Site: 1# Shielded Room
Operator: Finley Li
Test Specification: DC 3V
Comment: Live Line
Tem:25℃ Hum:50%

SCAN TABLE: "Voltage (150K~30M) FIN"

Short Description: 150K-30M Disturbance Voltages



MEASUREMENT RESULT: "AT1308842102_fin"

8/28/2013 10:56AM

Frequency MHz	Level dBμV	Transd dB	Limit dBμV	Margin dB	Detector	Line	PE
0.523500	41.20	20.1	56	14.8	QP	L1	GND
4.694500	37.30	20.5	56	18.7	QP	L1	GND
4.703500	41.10	20.5	56	14.9	QP	L1	GND
4.933000	38.80	20.5	56	17.2	QP	L1	GND
8.119000	44.70	20.5	60	15.3	QP	L1	GND
8.128000	45.30	20.5	60	14.7	QP	L1	GND

MEASUREMENT RESULT: "AT1308842102_fin2"

8/28/2013 10:56AM

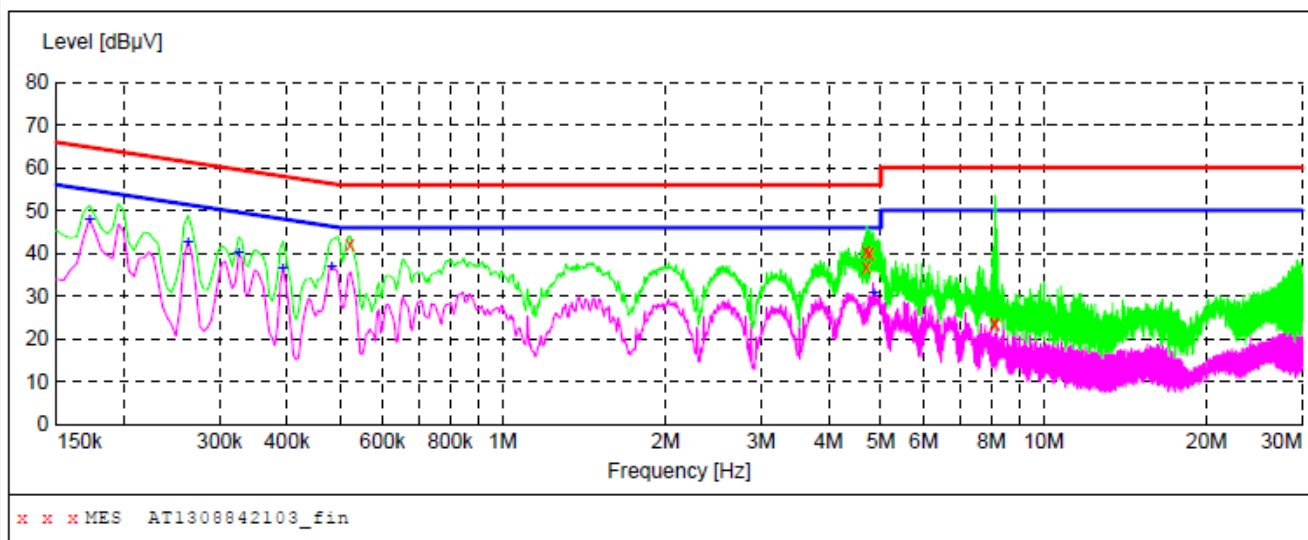
Frequency MHz	Level dBμV	Transd dB	Limit dBμV	Margin dB	Detector	Line	PE
0.172500	44.80	20.1	55	10.0	AV	L1	GND
0.262500	38.50	20.1	51	12.9	AV	L1	GND
0.325500	38.30	20.1	50	11.3	AV	L1	GND
0.393000	35.00	20.1	48	13.0	AV	L1	GND
0.483000	37.00	20.1	46	9.3	AV	L1	GND
4.357000	29.90	20.5	46	16.1	AV	L1	GND

CONDUCTED EMISSION TEST DATA

EUT: Wireless Keyboard M/N: KMG1005
Operating Condition: ON
Test Site: 1# Shielded Room
Operator: Finley Li
Test Specification: DC 3V
Comment: Neutral Line
Tem:25°C Hum:50%

SCAN TABLE: "Voltage (150K~30M) FIN"

Short Description: 150K-30M Disturbance Voltages

**MEASUREMENT RESULT: "AT1308842103_fin"**

8/28/2013 10:59AM

Frequency MHz	Level dBuV	Transd dB	Limit dBuV	Margin dB	Detector	Line	PE
0.523500	42.20	20.1	56	13.8	QP	N	GND
4.694500	37.00	20.5	56	19.0	QP	N	GND
4.703500	40.70	20.5	56	15.3	QP	N	GND
4.771000	40.30	20.5	56	15.7	QP	N	GND
8.114500	23.70	20.5	60	36.3	QP	N	GND
8.123500	23.50	20.5	60	36.5	QP	N	GND

MEASUREMENT RESULT: "AT1308842103_fin2"

8/28/2013 10:59AM

Frequency MHz	Level dBuV	Transd dB	Limit dBuV	Margin dB	Detector	Line	PE
0.172500	48.00	20.1	55	6.8	AV	N	GND
0.262500	42.70	20.1	51	8.7	AV	N	GND
0.325500	40.20	20.1	50	9.4	AV	N	GND
0.393000	36.40	20.1	48	11.6	AV	N	GND
0.483000	36.90	20.1	46	9.4	AV	N	GND
4.838500	30.80	20.5	46	15.2	AV	N	GND

4. Radiation Interference

4.1. Requirements (15.249, 15.209):

FIELD STRENGTH of Fundamental: @3M 902-928 MHZ 2.4-2.4835 GHz 94 dBμV/m @3m	FIELD STRENGTH of Harmonics 54 dBμV/m @3m	S15.209 30 - 88 MHz 88 - 216 MHz 216 - 960 MHz ABOVE 960 MHz	40 dBuV/m 43.5 46 54dBuV/m
--	---	--	---

Emissions radiated outside of the specified frequency bands, except for harmonics, shall be attenuated by at least 50 dB below the level of the fundamental or to the general radiated emission limits in 15.209, whichever is the lesser attenuation.

4.2 Test Procedure

The EUT is placed on a turn table which is 0.8 meter high above the ground. The turn table can rotate 360 degrees to determine the position of the maximum emission level. The EUT is set 3 meters away from the receiving antenna which is mounted on a antenna tower. The antenna can be moved up and down from 1 to 4 meters to find out the maximum emission level. Both horizontal and vertical polarization of the antenna are set on test.

All readings from 30MHz to 1GHz are quasi-peak values with a resolution bandwidth of 120kHz. All reading are above 1GHz, peak & average values with a resolution bandwidth of 1MHz. The EUT is tested in 9*6*6 Chamber.

The test results are listed in Section 4.3.

Test Equipment

Item	Equipment	Manufacturer	Model No.	Serial No.	Last Cal.	Cal. Interval
1.	Spectrum Analysis	Agilent	E4407B	US39390582	Aug. 09, 2013	1 Year
2.	Preamplifier	Instruments corporation	EMC011830	980100	Aug. 09, 2013	1 Year
3.	EMI Test Receiver	Rohde & Schwarz	ESPI	101604	Apr. 23, 2013	1 Year
4.	Double Ridged Horn Antenna	Instruments corporation	GTH-0118	351600	Aug. 09, 2013	3 Year
5.	Bilog Broadband Antenna	Schwarzbeck	VULB9163	VULB 9163-289	Apr. 23, 2013	3 Year
6.	Pre-amplifier	SONOMA	310N	186860	Apr. 23, 2013	1 Year
7.	EMI Test Software EZ-EMC	SHURPLE	N/A	N/A	N/A	N/A

Radiation Uncertainty : Ur = 4.3dB

4.3 Test Results

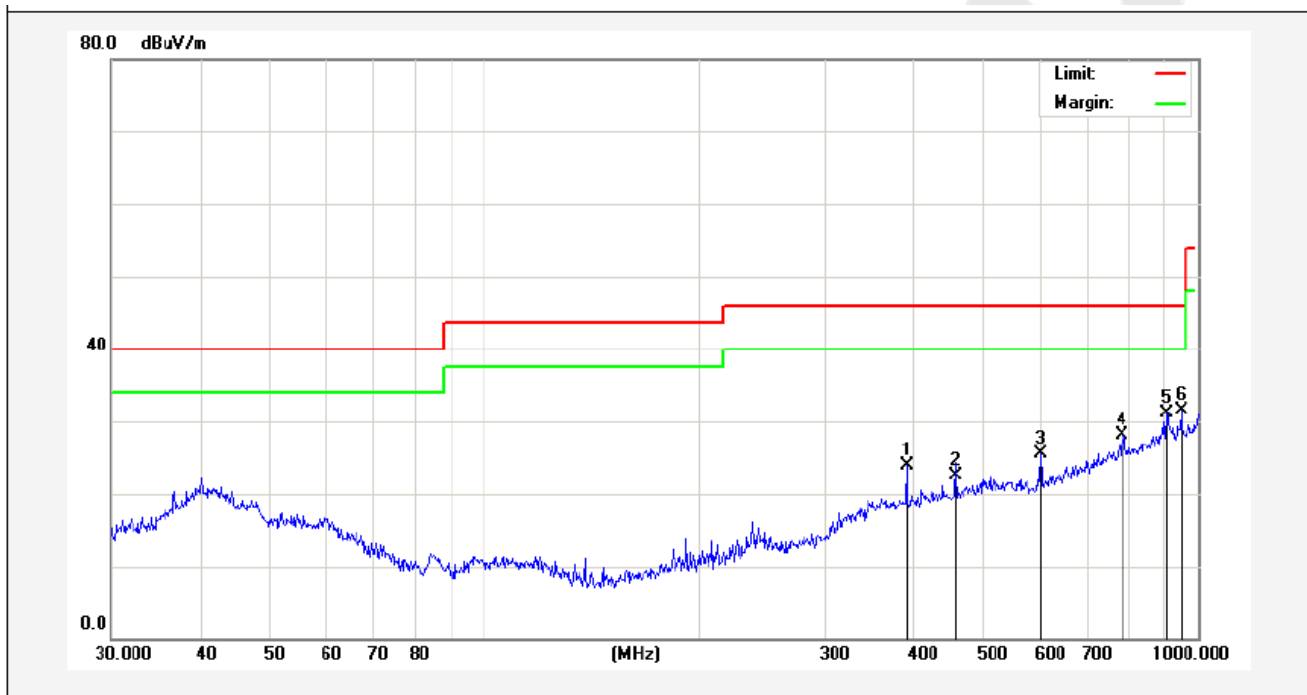
PASS.

Please refer the following pages.

Data:

Below 1GHz:

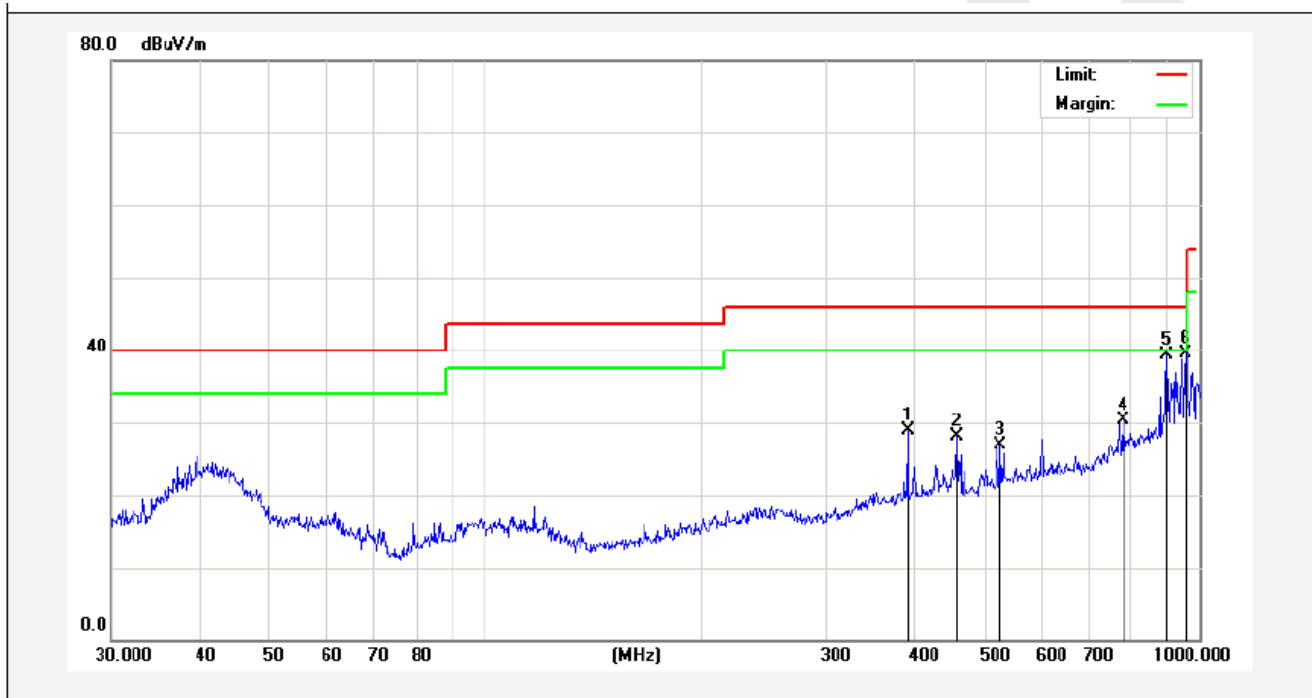
Job No.:	AT1308842F	Polarization:	Horizontal
Standard:	(RE)FCC PART15 C _3m	Power Source:	DC 3V
Test item:	Radiation Test	Date:	2013/08/28
Temp.(C)/Hum.(%RH):	24.3(C)/55%RH	Time:	19/37/18
EUT:	Wireless Keyboard	Test By:	Rock Zeng
Model:	KMG1005	Distance:	3m
Mode:	ON		
Note:	30-1000MHz		



No.	Freq. (MHz)	Reading (dBuV/m)	Factor (dB/m)	Result (dBuV/m)	Limit (dBuV/)	Over Limit (dB)	Detector	Height (cm)	degree (deg)	Remark
1	390.7226	36.90	-13.05	23.85	46.00	-22.15	peak			
2	457.5073	34.67	-12.11	22.56	46.00	-23.44	peak			
3	601.4265	36.67	-11.20	25.47	46.00	-20.53	peak			
4	782.3453	35.01	-6.85	28.16	46.00	-17.84	peak			
5	903.3094	35.73	-4.71	31.02	46.00	-14.98	peak			
6	945.4399	35.54	-4.03	31.51	46.00	-14.49	peak			

Job No.: AT1308842F
Standard: (RE)FCC PART15 C_3m
Test item: Radiation Test
Temp.(C)/Hum.(%RH): 24.3(C)/55%RH
EUT: Wireless Keyboard
Model: KMG1005
Mode: ON
Note: 30-1000MHz

Polarziation: Vertical
Power Source: DC 3V
Date: 2013/08/28
Time: 19/34/23
Test By: Rock Zeng
Distance: 3m



No.	Freq. (MHz)	Reading (dBuV/m)	Factor (dB/m)	Result (dBuV/m)	Limit (dBuV/)	Over Limit (dB)	Detector	Height (cm)	degree (deg)	Remark
1	390.7226	41.04	-12.05	28.99	46.00	-17.01	peak			
2	455.9058	39.96	-11.91	28.05	46.00	-17.95	peak			
3	526.3967	37.40	-10.51	26.89	46.00	-19.11	peak			
4	782.3453	36.26	-6.03	30.23	46.00	-15.77	peak			
5	900.1474	42.97	-3.76	39.21	46.00	-6.79	peak			
6	955.4381	42.44	-2.88	39.56	46.00	-6.44	peak			

Above 1 GHz:

Horizontal CH Low (2405MHz)								
Frequency MHz	Cable Loss dB	Ant Factor dB/m	Preamp Factor dB	Read Level dBμV	Level dBμV/m	Limit dBμV/m	Over Limit dB	Remark
2405.000	2.17	31.21	35.30	86.87	84.95	114.0	-29.05	Peak
2405.000	2.17	31.21	35.30	83.88	81.96	94.0	-12.04	AV
4810.350	2.56	34.01	34.71	47.71	49.57	74.0	-24.43	Peak
4810.350	2.56	34.01	34.71	36.35	38.21	54.0	-15.79	AV
7215.590	2.98	36.16	35.15	32.06	36.05	74.0	-37.95	Peak
7215.590	2.98	36.16	35.15	27.09	31.08	54.0	-22.92	AV
9620.000	---	---	---	---	---	---	---	---
12025.00	---	---	---	---	---	---	---	---
14430.00	---	---	---	---	---	---	---	---
16835.00	---	---	---	---	---	---	---	---
---		.						

Vertical CH Low (2405MHz)								
Frequency MHz	Cable Loss dB	Ant Factor dB/m	Preamp Factor dB	Read Level dBμV	Level dBμV/m	Limit dBμV/m	Over Limit dB	Remark
2405.000	2.17	31.21	35.30	89.13	87.21	114.0	-26.79	Peak
2405.000	2.17	31.21	35.30	81.15	79.23	94.0	-14.77	AV
4810.350	2.56	34.01	34.71	36.49	38.35	74.0	-35.65	Peak
4810.350	2.56	34.01	34.71	37.76	39.62	54.0	-14.38	AV
7215.590	2.98	36.16	35.15	33.17	37.16	74.0	-36.84	Peak
7215.590	2.98	36.16	35.15	37.18	41.17	54.0	-12.83	AV
9620.000	---	---	---	---	---	---	---	---
12025.00	---	---	---	---	---	---	---	---
14430.00	---	---	---	---	---	---	---	---
16835.00	---	---	---	---	---	---	---	---

Horizontal CH Middle (2448MHz)								
Frequency MHz	Cable Loss dB	Ant Factor dB/m	Preamp Factor dB	Read Level dBμV	Level dBμV/m	Limit dBμV/m	Over Limit dB	Remark
2448.000	2.19	31.22	34.60	91.14	89.95	114.0	-24.05	Peak
2448.000	2.19	31.22	34.60	86.35	85.16	94.0	-8.84	AV
4896.250	2.57	35.00	34.58	38.24	41.23	74.0	-32.77	Peak
4896.250	2.57	35.00	34.58	31.16	34.15	54.0	-19.85	AV
7344.370	3.00	36.17	35.14	35.12	39.15	74.0	-34.85	Peak
7344.370	3.00	36.17	35.14	34.59	38.62	54.0	-15.38	AV
9792.000	---	---	---	---	---	---	---	---
12240.00	---	---	---	---	---	---	---	---
14688.00	---	---	---	---	---	---	---	---
17136.00	---	---	---	---	---	---	---	---
---	---	---	---	---	---	---	---	---

Vertical CH Middle (2448MHz)								
Frequency MHz	Cable Loss dB	Ant Factor dB/m	Preamp Factor dB	Read Level dBμV	Level dBμV/m	Limit dBμV/m	Over Limit dB	Remark
2448.000	2.19	31.22	34.60	94.86	93.67	114.0	-20.33	Peak
2448.000	2.19	31.22	34.60	82.15	80.96	94.0	-13.04	AV
4896.250	2.57	35.00	34.58	37.29	40.28	74.0	-33.72	Peak
4896.250	2.57	35.00	34.58	41.22	44.21	54.0	-9.79	AV
7344.370	3.00	36.17	35.14	39.61	43.64	74.0	-30.36	Peak
7344.370	3.00	36.17	35.14	37.75	41.78	54.0	-12.22	AV
9792.000	---	---	---	---	---	---	---	---
12240.00	---	---	---	---	---	---	---	---
14688.00	---	---	---	---	---	---	---	---
17136.00	---	---	---	---	---	---	---	---
---	---	---	---	---	---	---	---	---

Horizontal CH High (2472MHz)								
Frequency MHz	Cable Loss dB	Ant Factor dB/m	Preamp Factor dB	Read Level dBμV	Level dBμV/m	Limit dBμV/m	Over Limit dB	Remark
2472.000	2.20	31.65	36.00	89.28	87.13	114.0	-26.87	Peak
2472.000	2.20	31.65	36.00	83.18	81.03	94.0	-12.97	AV
4944.420	2.58	35.06	34.79	49.98	52.83	74.0	-21.17	Peak
4944.420	2.58	35.06	34.79	37.24	40.09	54.0	-13.91	AV
7416.790	3.02	36.19	34.90	48.03	52.34	74.0	-21.66	Peak
7416.790	3.02	36.20	35.20	34.85	38.87	54.0	-15.13	AV
9888.000	---	---	---	---	---	---	---	---
12360.00	---	---	---	---	---	---	---	---
14832.00	---	---	---	---	---	---	---	---
17304.00	---	---	---	---	---	---	---	---
---	---	---	---	---	---	---	---	---

Vertical CH High (2472MHz)								
Frequency MHz	Cable Loss dB	Ant Factor dB/m	Preamp Factor dB	Read Level dBμV	Level dBμV/m	Limit dBμV/m	Over Limit dB	Remark
2472.000	2.20	31.65	36.00	89.77	87.62	114.0	-26.38	Peak
2472.000	2.20	31.65	36.00	82.84	80.69	94.0	-13.31	AV
4944.420	2.58	35.06	34.79	43.26	46.11	74.0	-27.89	Peak
4944.420	2.58	35.06	34.79	35.21	38.06	54.0	-15.94	AV
7416.790	3.02	36.19	34.90	42.63	46.94	74.0	-27.06	Peak
7416.790	3.02	36.20	35.20	32.51	36.53	54.0	-17.47	AV
9888.000	---	---	---	---	---	---	---	---
12360.00	---	---	---	---	---	---	---	---
14832.00	---	---	---	---	---	---	---	---
17304.00	---	---	---	---	---	---	---	---
---	---	---	---	---	---	---	---	---

**NOTE: “ --- ” in the table above means the reading of emissions are attenuated more than 20dB below the permissible limits or the field strength is too small to be measured.
The results of different modulations are the same.**

5. Occupied Bandwidth

5.1. Requirements (15.249):

The field strength of any emissions appearing outside the band edges and up to 10 kHz above and below the band edges shall be attenuated at least 50 dB below the level of the carrier or to the general limits of 15.249.

5.2. Test Procedure

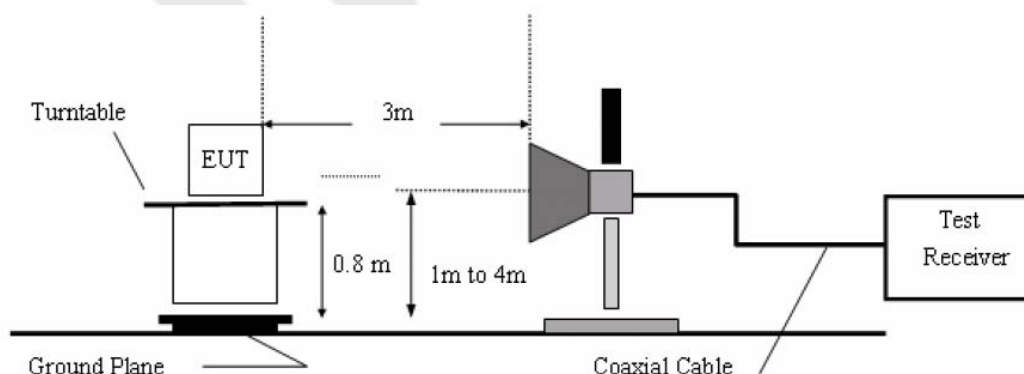
The EUT is placed on a turn table which is 0.8 meter high above the ground. The turn table can rotate 360 degrees to determine the position of the maximum emission level. The EUT is set 3 meters away from the receiving antenna which is mounted on a antenna tower. The antenna can be moved up and down from 1 to 4 meters to find out the maximum emission level. Both horizontal and vertical polarization of the antenna are set on test.

Test Equipment

Item	Equipment	Manufacturer	Model No.	Serial No.	Last Cal.	Cal. Interval
1.	Spectrum Analysis	Agilent	E4407B	US39390582	Aug. 09, 2013	1 Year
2.	Preamplifier	Instruments corporation	EMC011830	980100	Aug. 09, 2013	1 Year
3.	EMI Test Receiver	Rohde & Schwarz	ESPI	101604	Apr. 23, 2013	1 Year
4.	Double Ridged Horn Antenna	Instruments corporation	GTH-0118	351600	Aug. 09, 2013	3 Year
5.	Bilog Broadband Antenna	Schwarzbeck	VULB9163	VULB 9163-289	Apr. 23, 2013	3 Year
6.	Pre-amplifier	SONOMA	310N	186860	Apr. 23, 2013	1 Year
7.	EMI Test Software EZ-EMC	SHURPLE	N/A	N/A	N/A	N/A

Radiation Uncertainty : Ur = 4.3dB

5.3. Test Configuration:

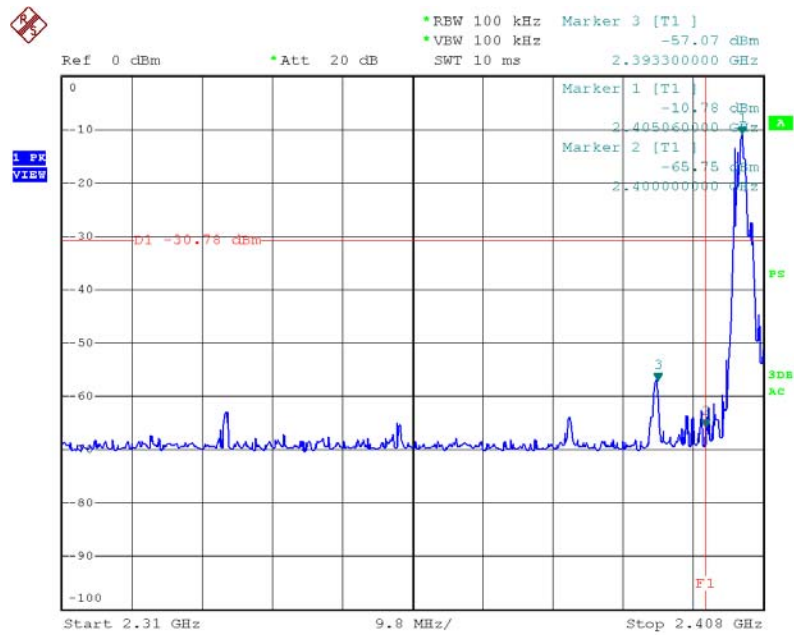


5.4. Test Results

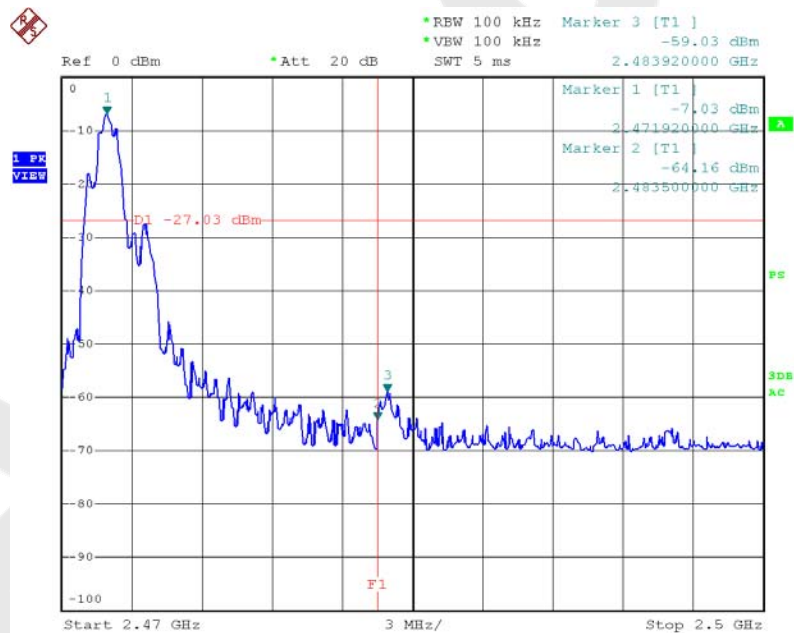
Pass.

Please refer the following plot.

(Note: Marker 3 means the highest value in 2.39GHz~2.4GHz or 2.4835~2.5GHz)

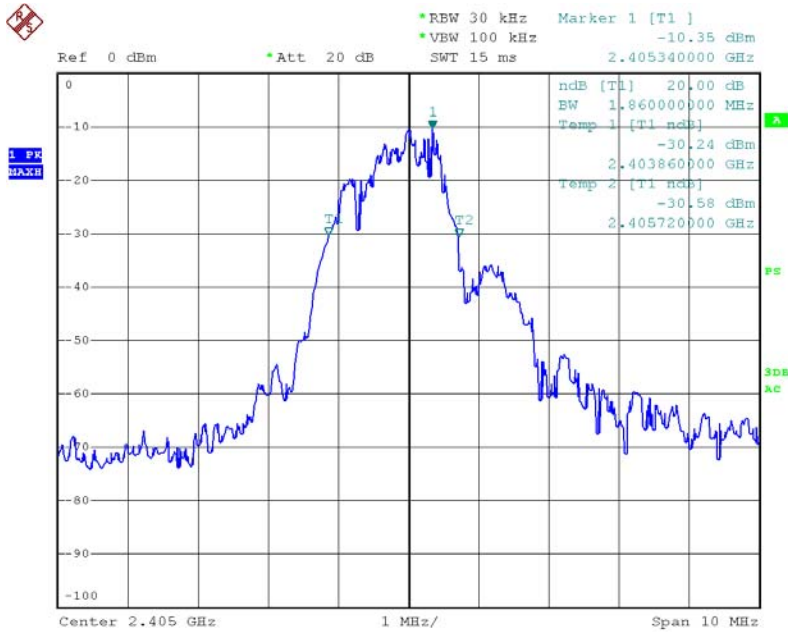


Date: 3.SEP.2013 17:43:56

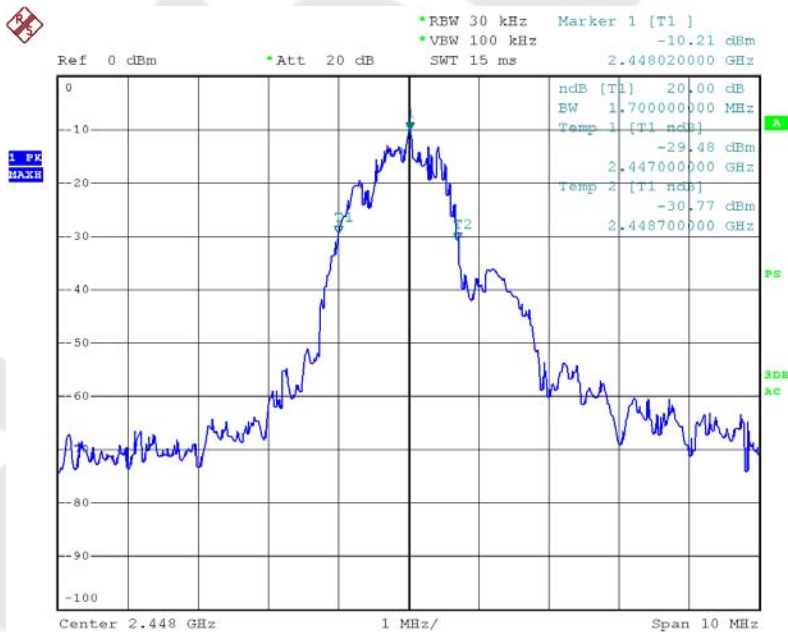


Date: 3.SEP.2013 17:31:05

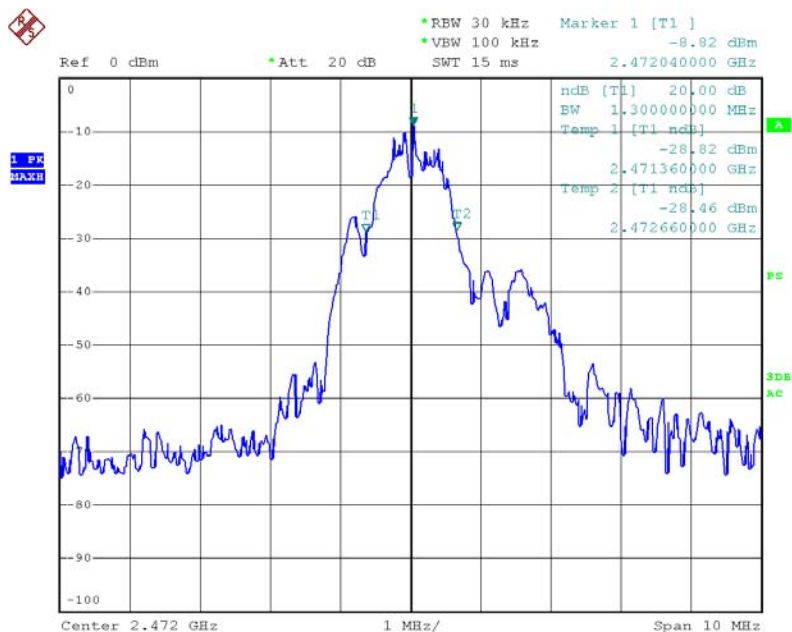
20dB Down:



Date: 3.SEP.2013 17:21:43



Date: 3.SEP.2013 17:24:26

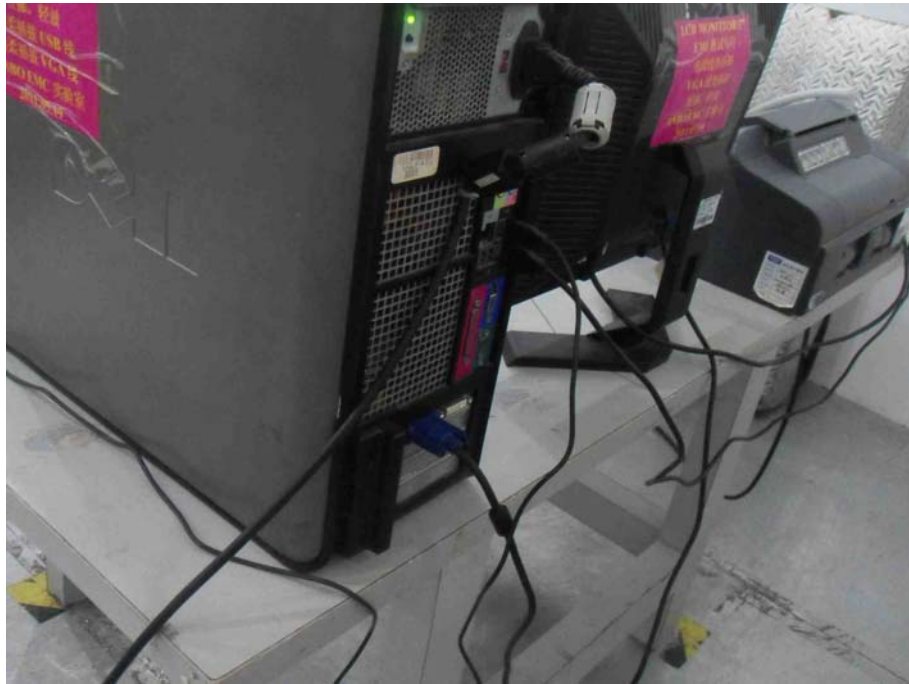


Date: 3.SEP.2013 17:26:22

6. PHOTOGRAPH

6.1. Photo of Power Line Conducted Emission Measurement

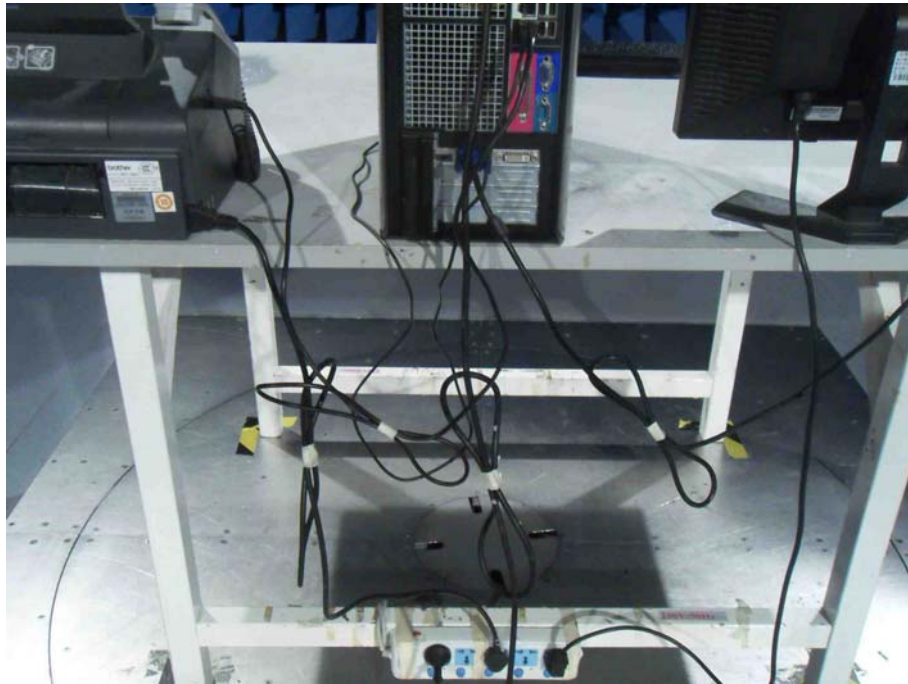




6.2. Photo of Radiation Emission Test







APPENDIX I (External Photos)

Figure 1
The EUT-Front View



Figure 2
The EUT-Back View



Figure 3
The EUT-Overall View



APPENDIX II (Internal Photos)

Figure 4
The EUT-Inside View



Figure 5
The EUT-Inside View

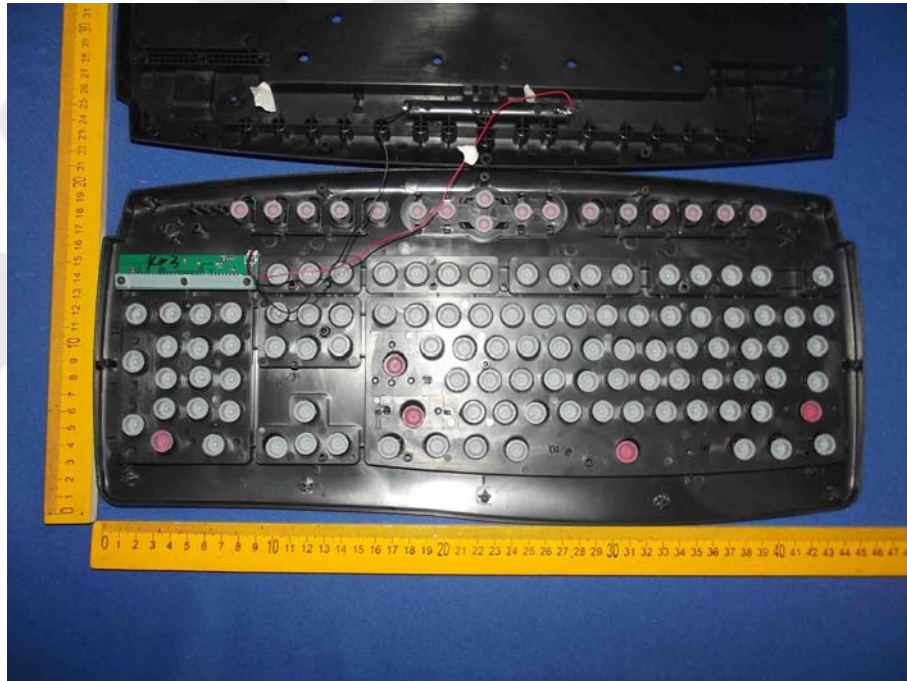


Figure 6
PCB of the EUT-Front View

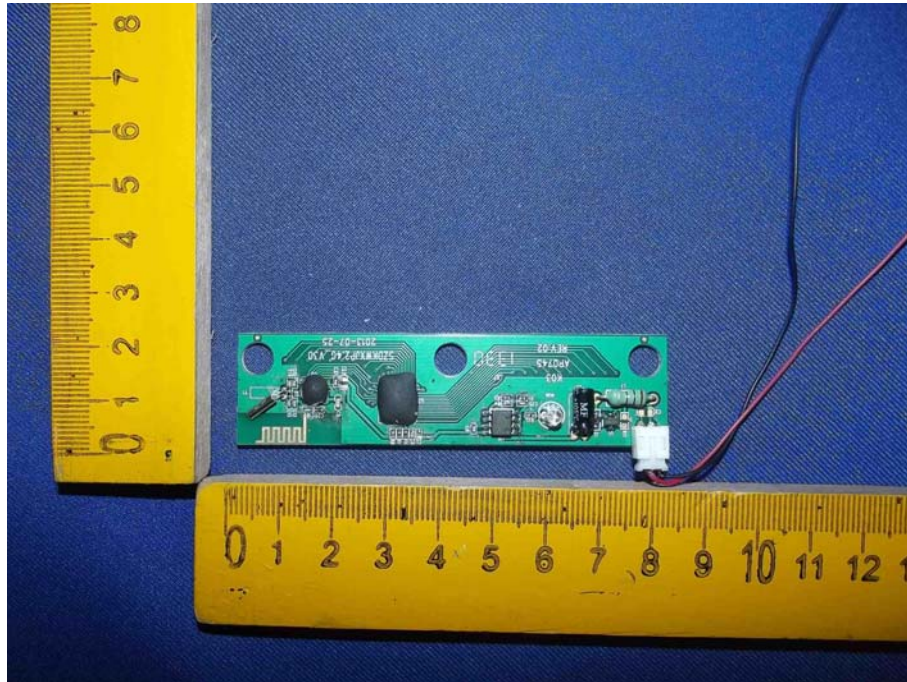


Figure 7
PCB of the EUT-Back View

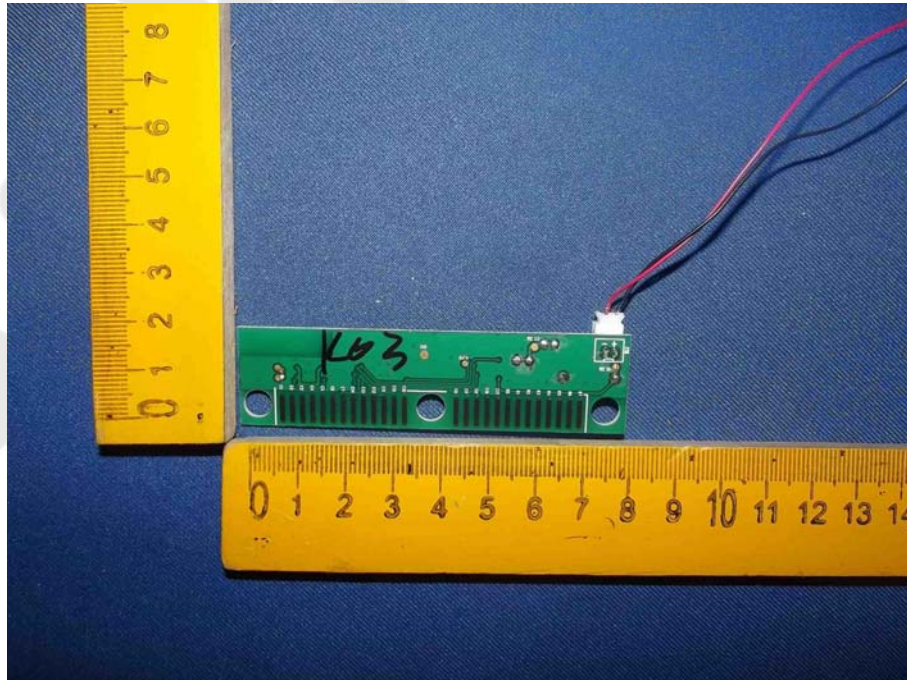


Figure 8
PCB of the BT Module View

