

SMM548 US IM (English/Spanish/French)

Date: 20 Jul 20

Size: 270 x 160 mm (unfolded size)

Color: 1C black printed

(front)



SMM548

INSTRUCTION MANUAL
MANUAL DE INSTRUCCIONES
MODE D'EMPLOI

Copyright © 2020 All Rights Reserved.
Derechos de autor © 2020 Todos los derechos reservados.
Droit d'auteur © 2020 Tous Droits Réservés

The Singing Machine® is a registered trademark of The Singing Machine Co., Inc.
Singing Machine® es marca registrada de The Singing Machine Co., Inc.
Singing Machine® est une marque déposée de The Singing Machine Co., Inc.

The Singing Machine Company, Inc.
4060 E Jurupa Street, Unit B
Ontario, CA 91761-1413 USA

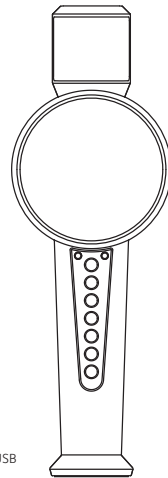
The Responsible Party
Company Name : The Singing Machine Co., Inc.
Address : 6301 NW 5th Way, Suite 2900, Fort Lauderdale, FL33309, USA
Telephone : 954 -596-1000

Included
Se incluyen
Contenu

What's in the box
Contenido de la caja
Contenu de la boîte



USB Charging Cable
Cable de carga USB
Câble de chargement USB



548-2007-EF501-US

Warnings

DRIPPING WARNING: This product shall not be exposed to dripping or splashing, and no objects filled with liquids, such as vases, shall be placed on the product.

Warnings: Changes or modifications to this unit not expressly approved by the party responsible for compliance could void the user's authority to operate the equipment.

FCC WARNING: This equipment may generate or use radio frequency energy. Changes or modifications to this equipment may cause harmful interference unless the modifications are expressly approved in the instruction manual. The user could lose the authority to operate this equipment if an unauthorized change or modification is made.

This device complies with part 15 of the FCC Rules. Operation is subject to the following two conditions: (1) This device may not cause harmful interference, and (2) this device must accept any interference received, including interference that may cause undesired operation.

NOTE: This equipment has been tested and found to comply with the limits for a Class B digital device, pursuant to part 15 of the FCC Rules. These limits are designed to provide reasonable protection against harmful interference in a residential installation. This equipment generates, uses and can radiate radio frequency energy and, if not installed and used in accordance with the instructions, may cause harmful interference to radio communications. However, there is no guarantee that interference will not occur in a particular installation. If this equipment does cause harmful interference to radio or television reception, which can be determined by turning the equipment off and on, the user is encouraged to try to correct the interference by one or more of the following measures:

- Reorient or relocate the receiving antenna.
- Increase the separation between the equipment and receiver.
- Connect the equipment into an outlet on a circuit different from that to which the receiver is connected.
- Consult the dealer or an experienced radio/TV technician for help.



Important Safety Information

1. Read these Instructions.
2. Keep these Instructions.
3. Heed all Warnings.
4. Follow all Instructions.
5. Do not use this apparatus near water.
6. Clean only with a dry cloth.
7. Do not install near any heat sources such as radiators, heat registers, stoves, or other apparatus (including amplifiers) that produce heat.
8. Only use attachments/accessories specified by the manufacturer.
9. Unplug this apparatus during lightning storms or when unused for long periods of time.
10. Refer all servicing to qualified service personnel. Servicing is required when the apparatus has been damaged in any way, such as power-supply cord or plug is damaged, liquid has been spilled or objects have fallen into the apparatus, the apparatus has been exposed to rain or moisture, does not operate normally, or has been dropped.
11. WARNING: To reduce the risk of fire or electric shock, do not expose this apparatus to rain or moisture. Do not place objects filled with water, such as a vase, on the apparatus.
12. CAUTION: To reduce the risk of fire or explosion, do not expose batteries to excessive heat such as sunshine, fire or other heat sources.

Specifications are subject to change without notice. Please retain the instructions for further reference, as they contain important information.

Warning: Changes or modifications to this unit not expressly approved by the party responsible for compliance could void the user's authority to operate the equipment.



The Bluetooth® word mark and logos are registered trademarks owned by Bluetooth SIG, Inc. and any use of such marks and logos by The Singing Machine Company, Inc. is under license. Other trademarks and trade names are those of their respective owners.

Specifications

AUDIO SECTION	
Output Power	3 Watts (RMS)
Output Impedance	3 Ohms
BLUETOOTH	
Bluetooth Version	V5.0
Working Distance	Up to 10 meters measured in open space
HEADPHONE SECTION	
	3.5 mm Stereo headphone jack
POWER SECTION	
Battery	Lithium ion battery 3.7 V 1,200 mAh
Input Power	Micro USB DC 5 V 1 A
DIMENSIONS	
	3.4 x 2.2 x 10 (inches) / 8.6 X 5.5 X 25.3 (cm)
WEIGHT	0.25 (kgs) / 0.55 (lbs)

Statement: The battery is not replaceable.

Troubleshooting Guide

Should this unit exhibit a problem, check the following before seeking service:

- **No Power**
 - Power is not on; press and hold the button to turn power on.
 - Confirm that the unit is charged.
- **No Sound - General**
 - Volume is set to minimum; raise volume of your Bluetooth music device by its volume control.
- **No sound from the microphone**
 - Microphone volume is set to minimum; raise microphone volume by pressing **VOL +** button up.
- **Bluetooth reception failure**
 - Put the external Bluetooth device close to the unit.
 - Pair the unit with the Bluetooth Device as the procedures stated in this manual.

Before you get started

EXIT "TRY ME" MODE

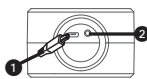
Press and hold the button 2 seconds or charge the unit to exit the "TRY ME" mode.

CHARGING THE UNIT

- 1 Insert the included USB charging cable into the unit's micro USB port .
 - 2 Plug the other end of the cable into a computer's USB port or other USB charging device (not included). We recommend to charge the unit 4 hours to ensure it is fully charged.
 - 3 The speaker will light in red and slowly flash while the unit is charging. The light will turn off once the unit is fully charged.
- NOTE:** Please charge the unit when you see the light on the speaker flashing red.

CONNECTING HEADPHONES

For private listening or to monitor singing, use headphones (not included). Insert headphones into the Headphones jack .



Energy Saving Mode (Auto Power System-APS)

The unit will automatically switch off after 30 minutes in the following situations:

1. There is no singing into the microphone;
 2. The Bluetooth music has been stopped.
- The unit can be switched on again by pressing and hold button. APS is for energy saving purposes.

Operation

- 1 Press and hold the button to turn the unit on; the power indicator will light. Press the button repeatedly to select Light mode as follows:

Light Mode 1-8: The speaker will light up with changing light colors. When there is music playback or singing, the lighting will flash with the audio signal.

Light Mode 9-10: The speaker will light up with color changing lights continuously.

Light Mode 11: The light will be turned off.

- 2 You can adjust the microphone volume by pressing the **VOL +** or **-** button.

SING-ALONG WITH BUILT-IN VOICE CHANGERS

3 There are 6 built-in voice changers in this unit. When you press the **FX** or **V** button the speaker light will change. The voice will change when the singer starts to sing through the microphone.

- Purple light - ECHO
- Pink light - FEMALE
- Orange light - MALE
- Lime light - CHIPMUNK
- Cyan light - ROBOT
- Blue light - RADIO.

Select white (NONE) to sing without any voice effect.

- 4 To sing without the lead singer on the recording, press the **VOCALS** button. To resume the lead singer, press the **VOCALS** button again.

Note: Lead vocal removal may work better on some songs than others.

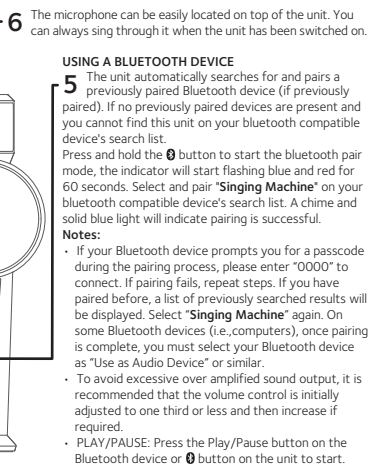
USING A BLUETOOTH DEVICE

5 The unit automatically searches for and pairs a previously paired Bluetooth device (if previously paired). If no previously paired devices are present and you cannot find this unit on your bluetooth compatible device's search list.

Press and hold the button to start the bluetooth pair mode, the indicator will start flashing blue and red for 60 seconds. Select and pair "Singing Machine" on your bluetooth compatible device's search list. A chime and solid blue light will indicate pairing is successful.

Notes:

- If your Bluetooth device prompts you for a passcode during the pairing process, please enter "0000" to connect. If pairing fails, repeat steps. If you have paired before, a list of previously searched results will be displayed. Select "Singing Machine" again. On some Bluetooth devices (i.e., computers), once pairing is complete, you must select your Bluetooth device as "Use as Audio Device" or similar.
- To avoid excessive over amplified sound output, it is recommended that the volume control is initially adjusted to one third or less and then increase if required.
- **PLAY/PAUSE:** Press the Play/Pause button on the Bluetooth device or button on the unit to start.
- Press and hold the button to disconnect any paired device in order to pair another device, the indicator will turn flashing blue and red.



ADVERTENCIAS

ADVERTENCIA DE GOTEO: Este producto no se podrá exponer a goteo o salpicaduras, y no se colocará ningún objeto lleno con líquidos, como jarrones, encima del producto.

Advertencias:

Los cambios o modificaciones efectuadas a esta unidad que no fueron expresamente aprobados por la parte responsable del cumplimiento, podrían anular la autoridad del usuario para operar el equipo. Se recomienda a los padres revisar periódicamente el adaptador para verificar que no existan condiciones que puedan ocasionar riesgos de incendio, descarga eléctrica o lesiones a las personas y que, de existir dichas condiciones, no se utilice el adaptador hasta que esté correctamente reparado.

NOTIFICACION DE LA FCC: Este equipo puede generar o usar energía de radio frecuencia. Los cambios o modificaciones realizados en el aparato pueden provocar interferencia perjudicial, a menos que dichas modificaciones estén autorizadas en el manual de instrucciones. El usuario puede perder toda autoridad para operar el equipo si realiza cambios o modificaciones sin autorización. Este aparato cumple con la parte 15 de las Normas de la FCC. El funcionamiento está sujeto a las dos condiciones que figuran a continuación: (1) Es probable que no cause interferencia perjudicial y (2) deberá aceptar cualquier interferencia recibida, incluyendo la interferencia que pueda llegar a causar un funcionamiento indeseado.

NOTA: Este equipo fue probado y se concluyó que cumple con los límites establecidos para los dispositivos digitales Clase B, de acuerdo con el Apartado 15 de las normas de la FCC. Estos límites fueron pensados para proporcionar protección razonable ante la interferencia perjudicial en una instalación residencial. Este equipo genera, usa y puede emitir energía de radio frecuencia y, si no se lo instala y utiliza de conformidad con las instrucciones, puede causar interferencia perjudicial a las comunicaciones radiales. No obstante, no existe ninguna garantía de que no se produzca interferencia en una instalación en particular. Si este equipo provoca interferencia perjudicial a la recepción de radio o televisión, lo cual puede determinarse apagando y encendiendo el equipo, el usuario puede intentar corregir la interferencia de alguna/s de las siguientes maneras:

- Reorientar la antena receptora o ubíquela en otro lugar.
- Aumentar la distancia entre el equipo y el receptor.
- Conecte el equipo a un tomacorriente de un circuito distinto al que está conectado al receptor.
- Consulte al distribuidor o a un técnico experimentado de radio y televisión para que lo asesore.



Información importante sobre seguridad

1. Lea estas instrucciones.
2. Conserve estas instrucciones.
3. Preste atención a todas las advertencias.
4. Siga todas las instrucciones.
5. No utilice este artefacto cerca del agua.
6. Limpie únicamente con un paño seco.
7. No obstruya las aberturas para ventilación. Instálelo de acuerdo con las instrucciones del fabricante.
8. No instale cerca de fuentes de calor, como radiadores, rejillas de calefacción, estufas u otros aparatos (incluso amplificadores) que produzcan calor.
9. Desenchufe este artefacto durante las tormentas eléctricas o cuando no se lo utilice durante períodos prolongados.
10. Derive todas las reparaciones al personal de reparaciones calificado. Es necesario reparar el artefacto cuando se encuentra dañado, por ejemplo, cuando el cable de suministro de energía o el enchufe están dañados, cuando se derrama líquido sobre la unidad o caen objetos dentro del mismo, cuando el producto ha estado expuesto a la lluvia o a la humedad, cuando no funciona con normalidad o cuando se ha caído.
11. ADVERTENCIA: Para reducir el riesgo de incendio o descarga eléctrica, no exponga este artefacto a la lluvia o la humedad. No coloque objetos llenos de agua, como jarrones, sobre el aparato.
12. PRECAUCIÓN: Para reducir el riesgo de incendio o explosión no exponga las baterías al calor excesivo, como al rayo del sol, fuego u otras fuentes de calor.

Las Especificaciones Están Sujetas A Cambios Sin Previso Aviso. Guarde las instrucciones para referencia futura ya que contienen información importante.

Advertencias: Los cambios o modificaciones efectuadas a esta unidad que no fueron expresamente aprobados por la parte responsable del cumplimiento, podrían anular la autoridad del usuario para operar el equipo.



La marca y los logotipos de Bluetooth® son marcas comerciales registradas propiedad de Bluetooth SIG, Inc., y todo uso que The Singing Machine Company haga de dichas marcas es en virtud de una licencia. Otras marcas registradas y comerciales pertenecen a sus respectivos titulares.

