

BOM EYE Manual



BOMTECH ELECTRONICS Co., Ltd.

The Bom bldg., 322, Gonghang-daero, Gangseo-gu, Seoul, Korea

Tel: +82-2-523-8294~6 / Fax: +82-2-523-8297

1. Composition

Main body 1ea, Stand 1ea,
Lens 4ea (Lens for Skin X80, Lens for Hair/Scalp, X80, X250, X800)
USB cable 1ea, Adapter 1ea



Main body



Lens

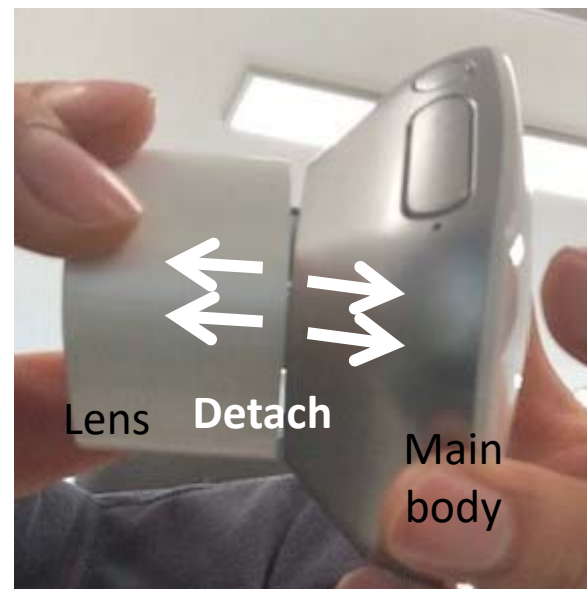
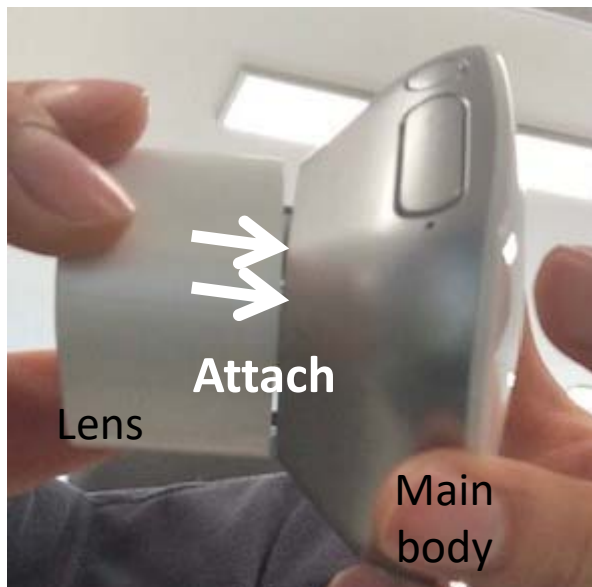


Stand

2. Instructions

2.1 How to operate

- 1) **How to attach lens:** Attach lens to the main body
How to detach lens: Pull lens straight off the main body
- 2) Press power button for 2 seconds to switch on the main body
(Blue light on + Sound effect)
- 3) Press power button 2 seconds again to switch off the main body
(Blue light off + Sound effect)



2.2 Charging

- 1) Connect stand, adapter and USB cable
- 2) Put main body on a stand and charging starts automatically
- 3) Charging : Blue light is flashing
Fully charged : Blue light is on without flashing



Charging

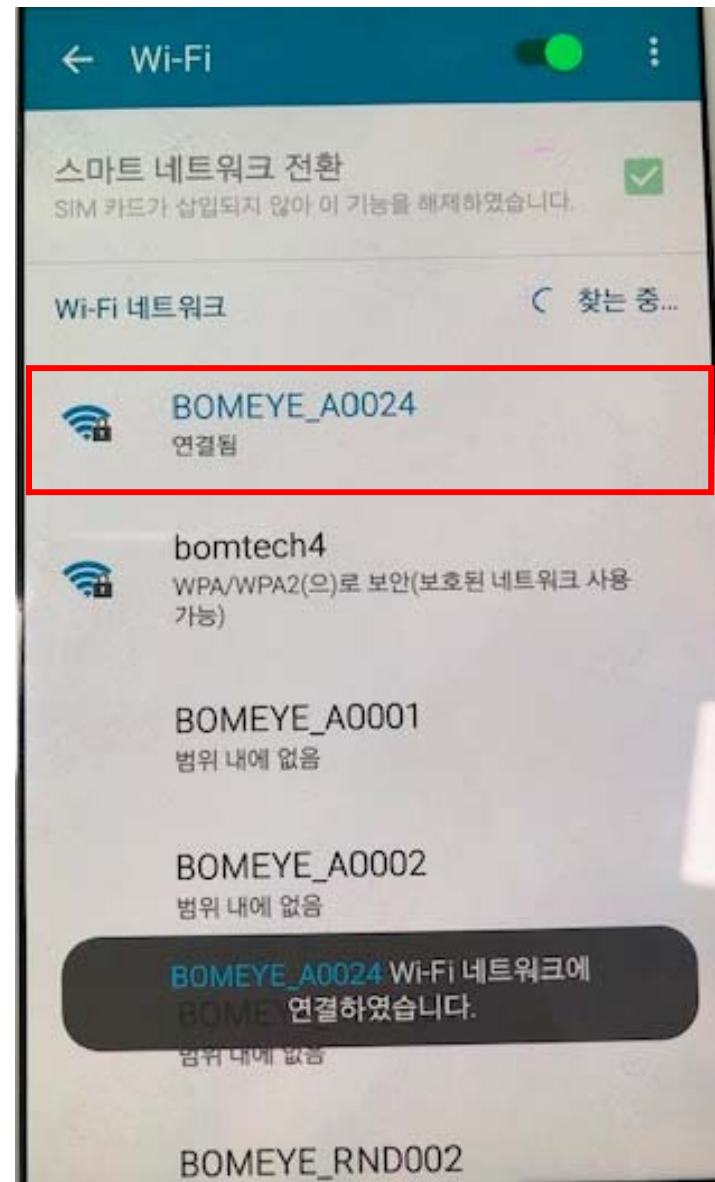


Fully Charged


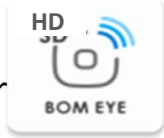
3. APPS

3.1 Connection


- 1) Select & attach a lens and press power button for 2 seconds on the main body to switch on the main body
- 2) Go to Setting → Wifi on a mobile phone and search wifi '**BOMEYE_A00XX**'
(This manual takes '**BOMEYE_A0024**' as example)
- 3) Connect '**BOMEYE_A00XX**'



3.2 Run Apps

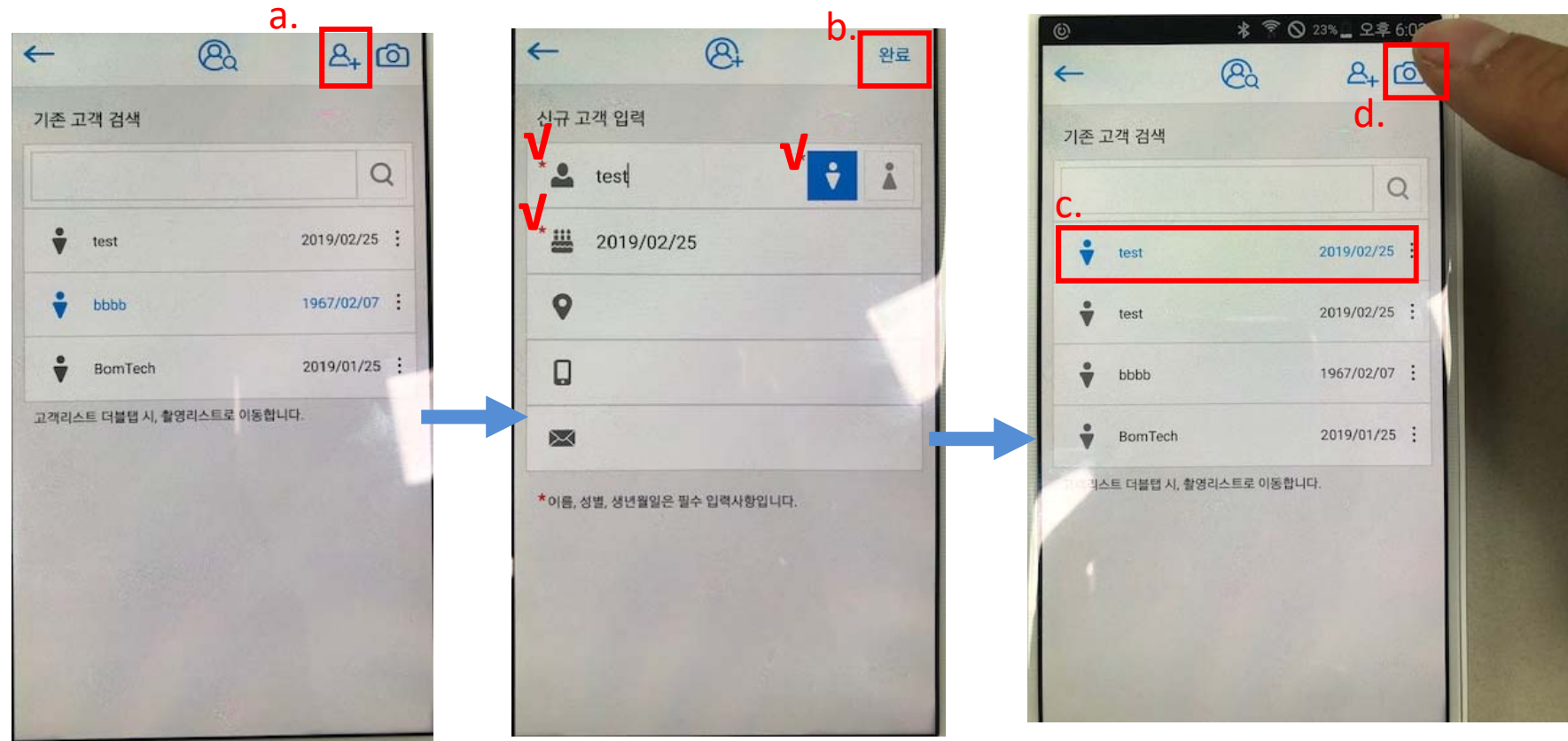
- 1) Find and run  or  on the screen of mobile phone.

SD: Apps for Skin , HD: Apps for Hair/Scalp

- 2) Select  button on the screen to go to customer list



3.3 Analysis



a. Touch '+' to enter customer's basic information

b. Touch 'Save' button after finishing filling in basic information

c. Select the name tab that just saved

d. Touch camera icon to take photos

*Name, gender, birthday must be filled in.

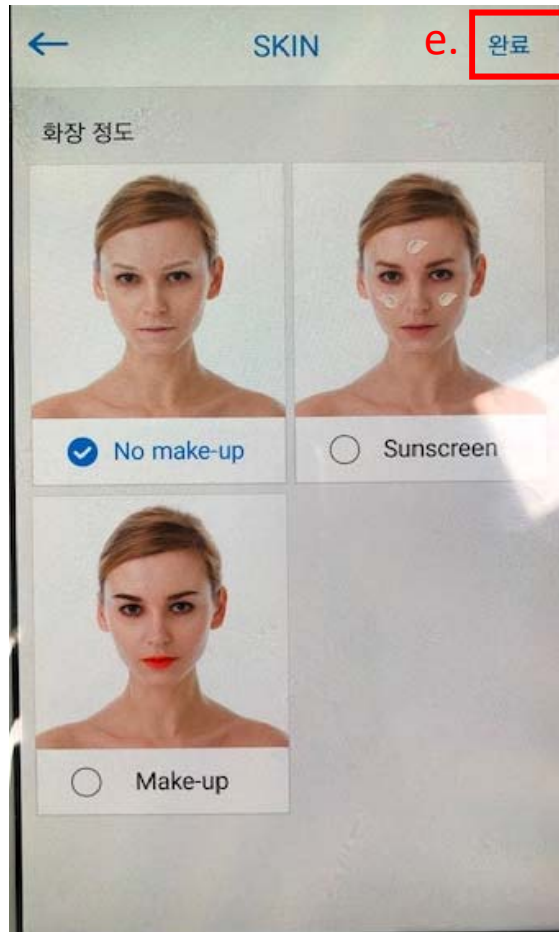
3.3 Analysis (In the case of



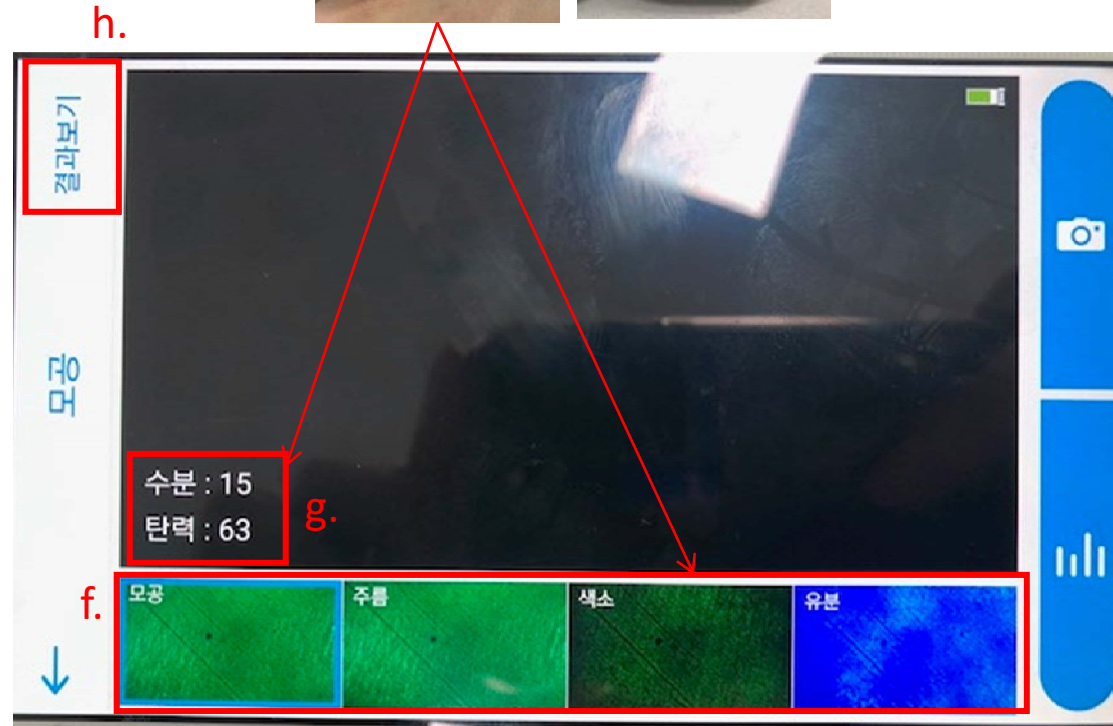
Power/FRZ.
button



Lens for Skin X80



e. Select one among No make-up, Sunscreen, Make-up



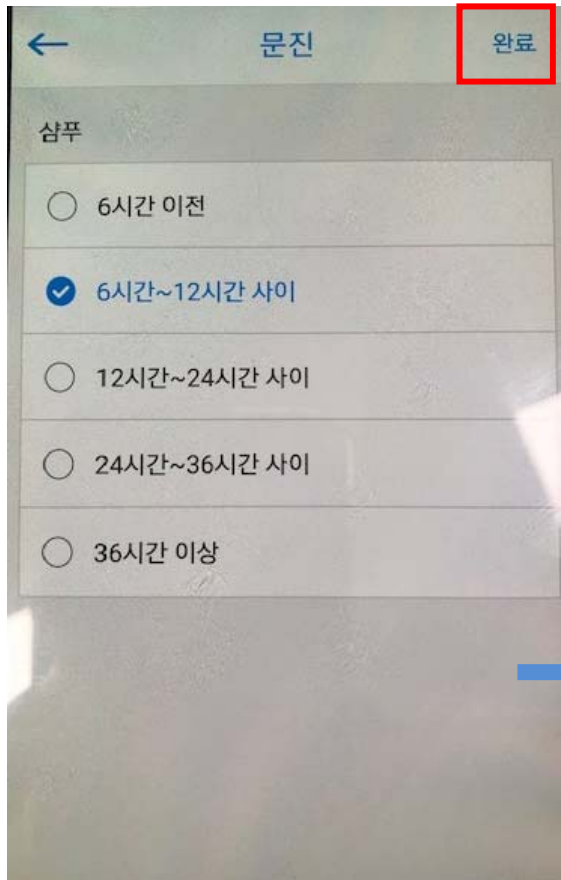
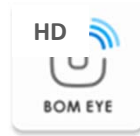
f. Firmly attach the lens to skin and press Power/Frz button to take photos of pore, wrinkle, pigmentation, sebum in order.

g. After 4 photos are taken, press Power/Frz. Button one more time to measure moisture and elasticity

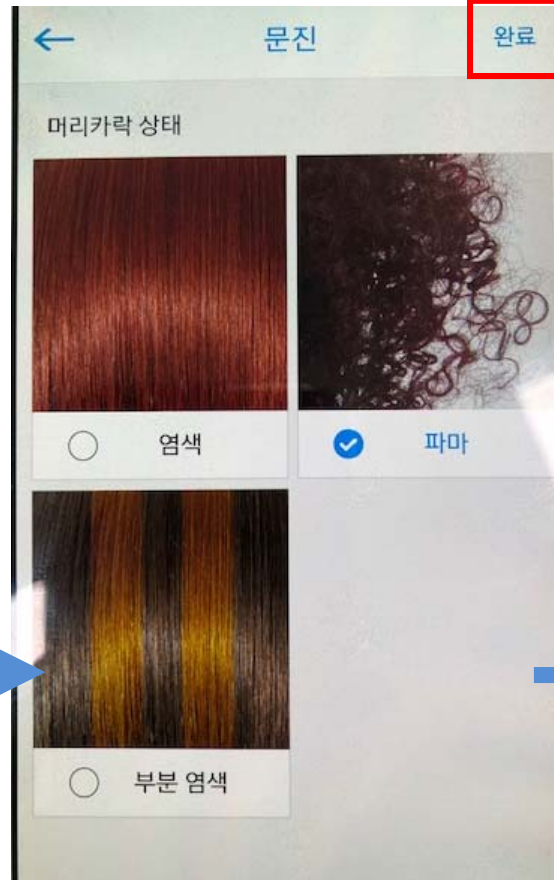
*Camera and sensor can be operated by the buttons on the screen as well.

h. Touch 'Result' button to see results

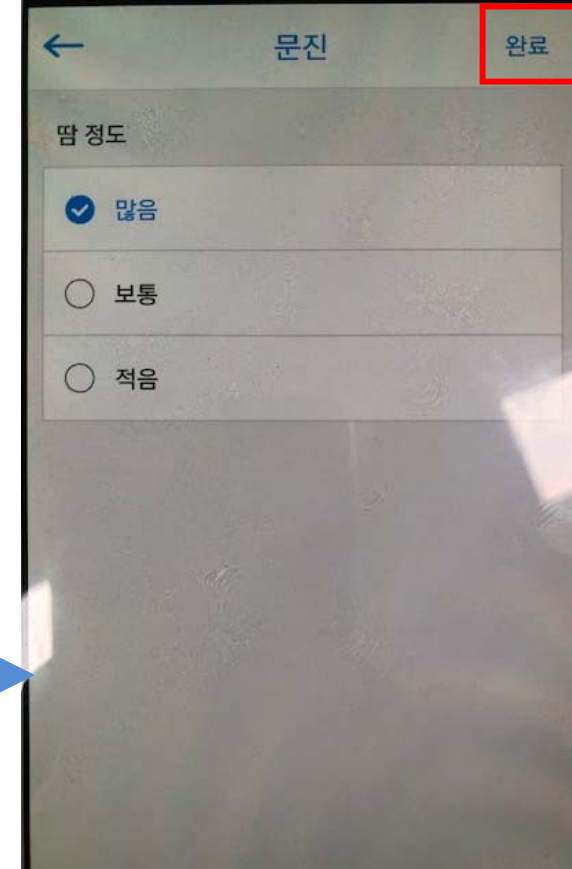
3.3 Analysis (In the case of)



e. Select an item according to how many hours passed after shampooing last time



f. Select an item according to current hair condition and touch 'Save' button

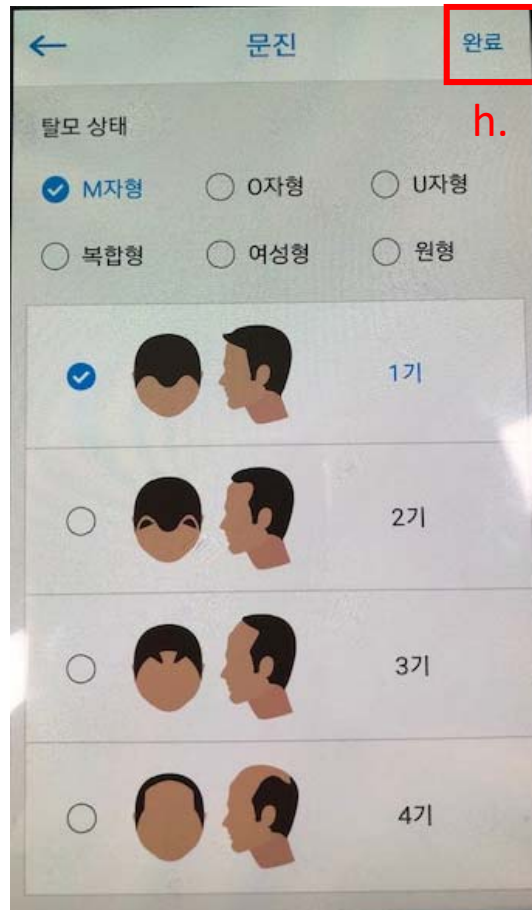


g. Select an item according to how much/often you sweat and touch 'Save' button

3.3 Analysis (In the case of



Lens for Hair/Scalp



- h. Select an items according to current hair loss conditions and touch 'Save' button



- i. Firmly attach the lens to scalp/hair and press Power/Frz. button to take photos of sebum, scalp, pores, hair damage in order
 Sebum/Scalp : Use lens X80 for hair/scalp
 Pore : Use lens X250 for hair/scalp
 Hair Loss : Use lens x800 for hair/scalp
- j. Press 'Result' to see results

FCC Instructions

FCC Compliance Statement

This device complies with part 15 of the FCC rules. Operation is subject to the following two conditions: (1) This device may not cause harmful interference, and (2) this device must accept any interference received, including interference that may cause undesired operation.

FCC Interference Statement

This equipment has been tested and found to comply with the limits for a Class B digital device, pursuant to part 15 of the FCC Rules. These limits are designed to provide reasonable protection against harmful interference in a residential installation. This equipment generates, uses and can radiate radio frequency energy and, if not installed and used in accordance with the instructions, may cause harmful interference to radio communications. However, there is no guarantee that interference will not occur in a particular installation. If this equipment does cause harmful interference to radio or television reception, which can be determined by turning the equipment off and on, the user is encouraged to correct the interference by one of the following measures:

Reorient or relocate the receiving antenna.

Increase the separation between the equipment and receiver.

Connect the equipment into an outlet on a circuit different from which the receiver is connected.

Consult the dealer or an experienced radio/TV technician for help.

FCC Caution

Any changes or modifications not expressly approved by the party responsible for compliance could void the user's authority to operate this equipment. This transmitter must not be co-located or operating in conjunction with any other antenna or transmitter.

FCC Radiation Exposure Statement

This equipment complies with FCC radiation exposure limits set forth for an uncontrolled environment. This transmitter must not be co-located or operating in conjunction with any other antenna or transmitter.

4. WARRANTY

Product Warranty

Product Name		Model Name	
Manufactured Number		Purchase Date	
E-mail		Warranty Period	1 Year after Purchase

1. This product manufactured under high standard of quality assurance and inspection process.
2. The product repair without charge would be done under normal condition within warranty period. (Consumable products would be provided with the correspondence charge.)
3. There would be cost charged even the warranty period is remaining, in the case of damaging the device by carelessness or misuse of the product
4. Any other questions or inquiries about the product, please contact Customer center at BOMTECH Electronics Co., Ltd.

For better assistance, please fill in the table above and fax to our Customer Center.





The Bom Bldg., 322, Gonghang-daero, Gangseo-gu, Seoul, Korea
Tel. +82-2-523-8294~6 Fax. +82-2-523-829