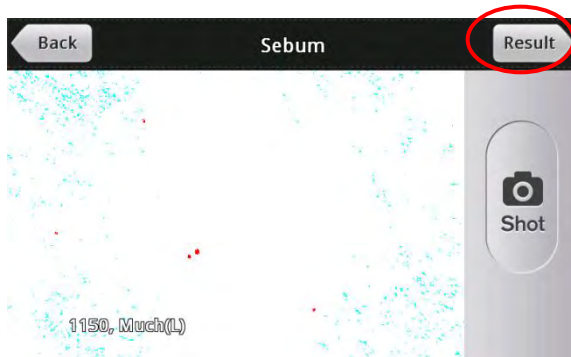


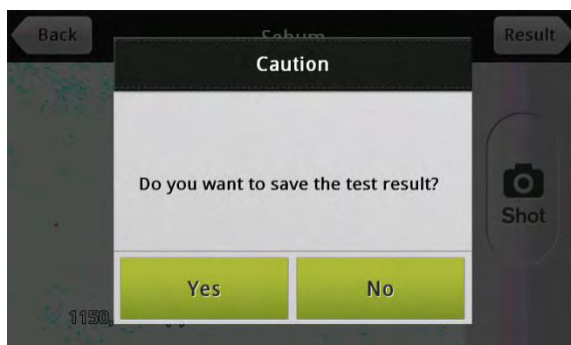
7. How to use A-ONE TAB

(3) SD Skin Diagnosis

◆ <Sebum> Diagnosis result ◆

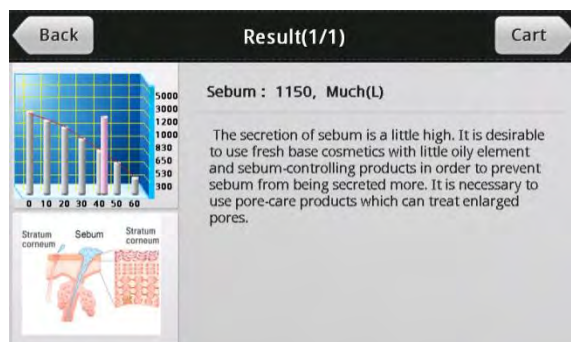


3) Click 'Result' button.



<Do you want to save the test result?>

4) Select 'Yes' or 'No'

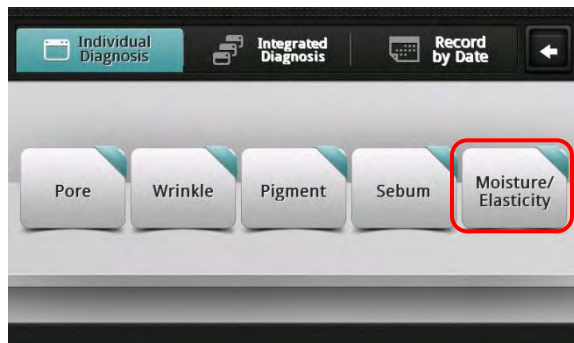


5) Move to result page.

7. How to use A-ONE TAB

(3) SD Skin Diagnosis

◆ <Moisture/Elasticity> Diagnosis ◆



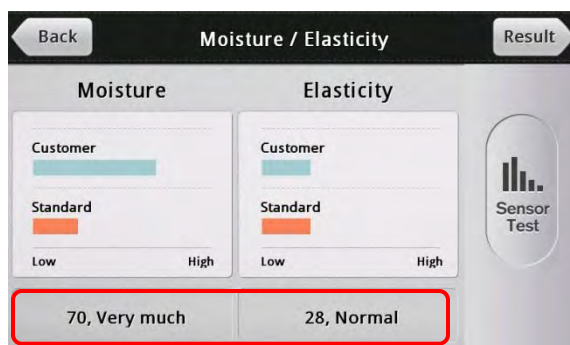
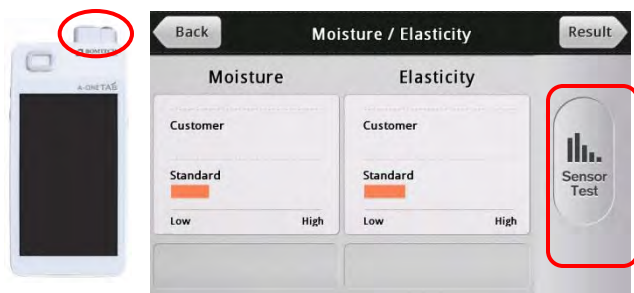
1) Click 'Moisture/Elasticity' .

Moisture and elasticity are measured by sensor.

2) put the sensor on skin and click 'sensor Test'

* Put the sensor below your cheekbone to measure Moisture/Elasticity test.

**** Do not put it on your cheekbone.**



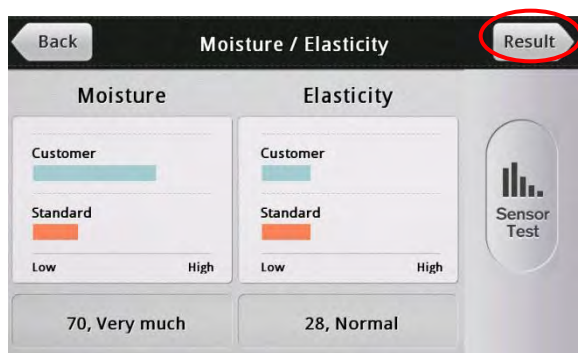
the test value will be shown automatically at the bottom of left.

7. How to use A-ONE TAB

(3) SD Skin Diagnosis

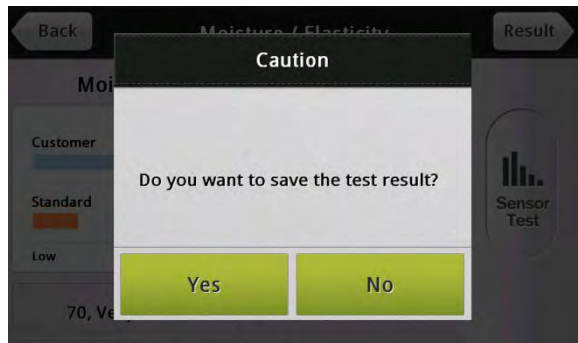
◆ 〈Moisture/Elasticity〉 Diagnosis result ◆

3) Click 'Result' button.

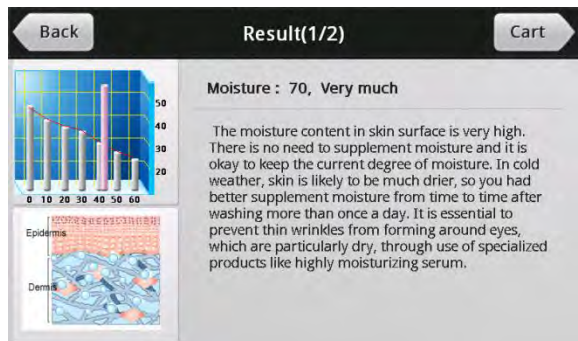


〈Do you want to save the test result?〉

4) Select 'Yes' or 'No'



5) Move to result page.



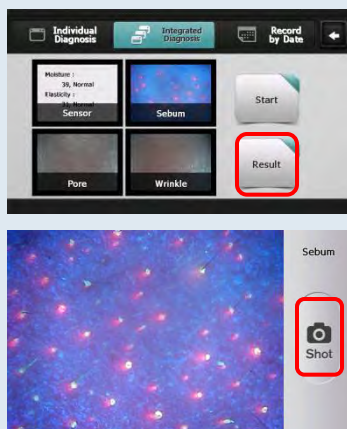
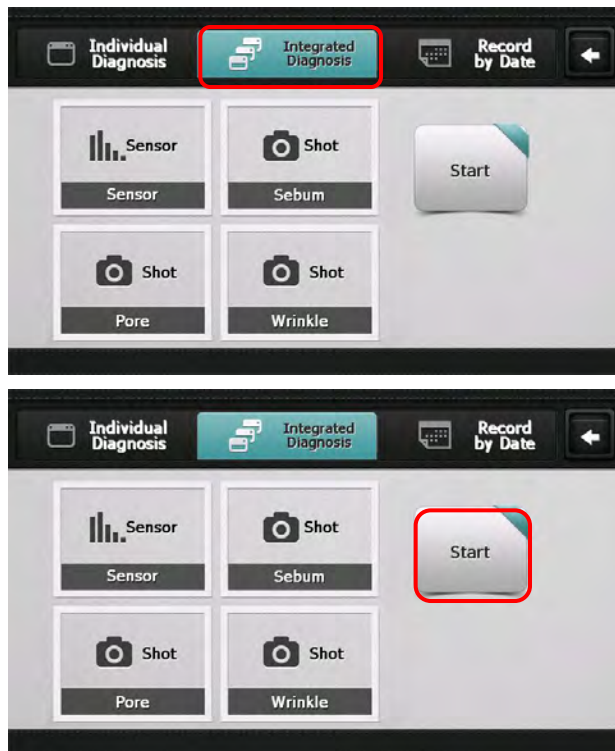
7. How to use A-ONE TAB

(3) SD Skin Diagnosis

◆ Integrated Diagnosis ◆

Diagnose
Moisture/Elasticity/Pore/Sebum/Pigment
/Wrinkle.

- 1) Click 'Integrated Diagnosis' .
- 2) Click 'Start' or select one of test item on the left.



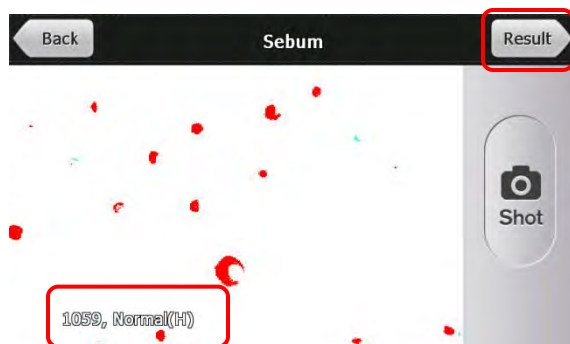
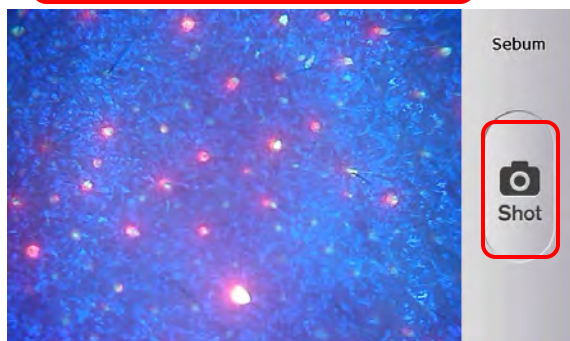
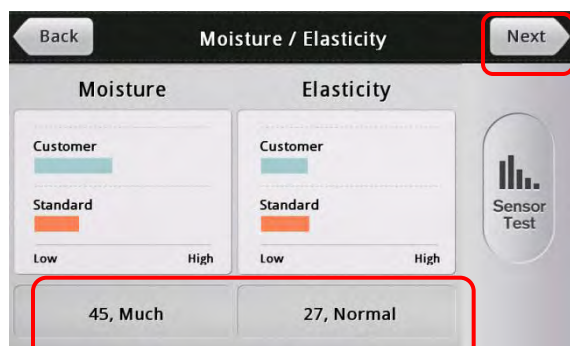
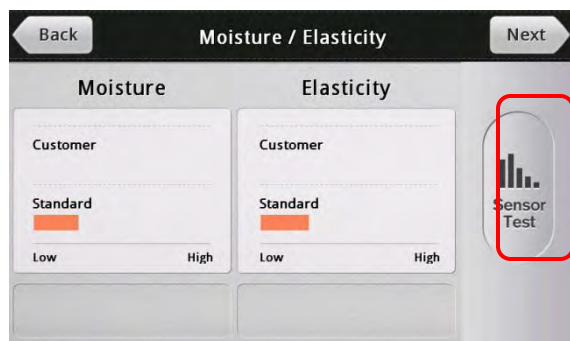
* Tip

*** If user did all tests on the first page by clicking each test item, no need to diagnose each test item again after pressing Start button.

*** if you want to re-take a photo, click the test item or 'shot' button at camera screen.

7. How to use A-ONE TAB

(3) SD Skin Diagnosis



◆ Integrated Diagnosis ◆

Moisture and elasticity are measured by sensor.

1) put the sensor on skin and click 'sensor Test'

* Put the sensor below your cheekbone to measure Moisture/Elasticity test.

**** Do not put it on your cheekbone.**

the test value will be shown automatically at the bottom of left.

2) Click 'Next' .

3) put camera on skin and click 'shot' to measure sebum condition .



NEVER aim the beam in or near anyone's eyes.

The test value will be shown automatically at the bottom of left.

4) Click 'Next' .

7. How to use A-ONE TAB

(3) SD Skin Diagnosis

◆ Integrated Diagnosis ◆

1) put camera on skin and click 'shot' to measure pore condition .

the test value will be shown automatically at the bottom of left.

2) Click 'Next' .

3) put camera on skin and click 'shot' to measure wrinkle condition .

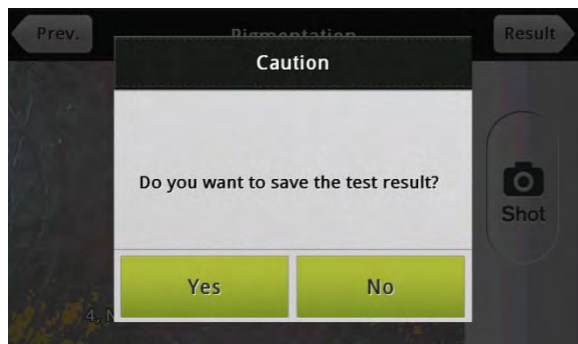
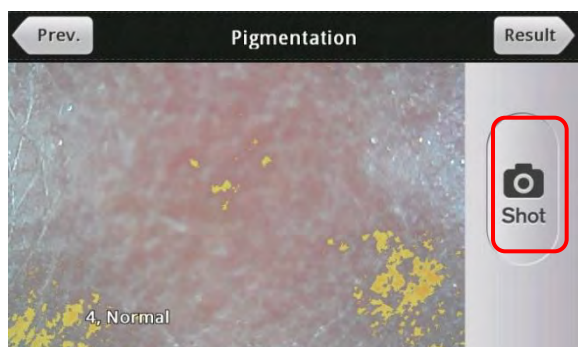
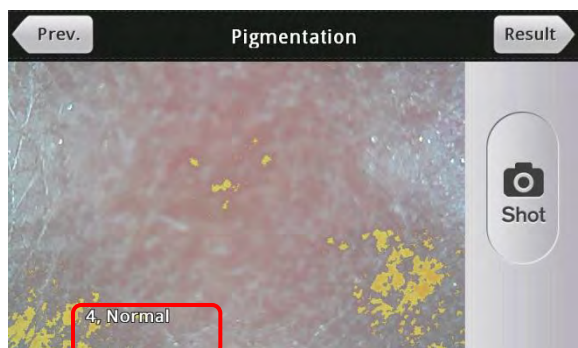
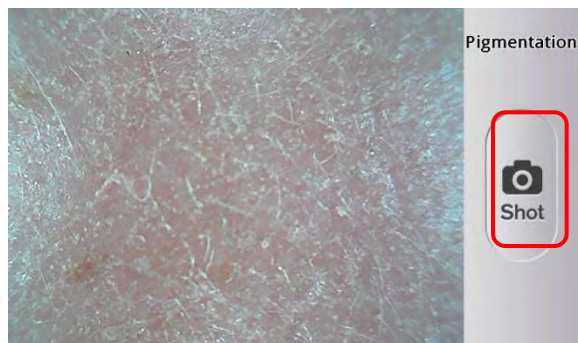
the test value will be shown automatically at the bottom of left.

4) Click 'Next' .



7. How to use A-ONE TAB

(3) SD Skin Diagnosis



◆ Integrated Diagnosis ◆

1) put camera on skin and click 'shot' to measure pigment condition .

the test value will be shown automatically at the bottom of left.

*** In case select each test item and take a photo, the photo of pore is used for pigment.

You can re-take photo of pigment when you check the edit page, by double-clicking 'shot' .

2) Click 'Result' button

<Do you want to save the test result?>

Select 'Yes' or 'No' .

7. How to use A-ONE TAB

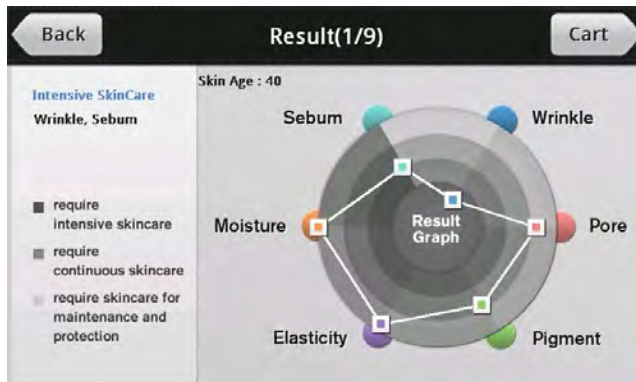
(3) SD Skin Diagnosis

◆ Result page ◆

Result 1

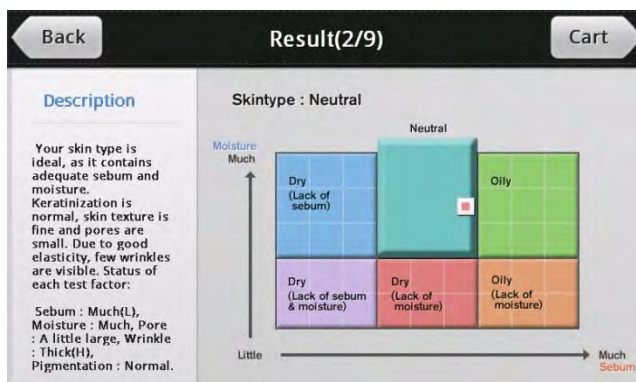
- Skin age(Optional)
- Result graph
- intensive skincare zone,

**** Touch the screen with a finger and drag upward to move to the next page
Drag downward to Move back to the preceding page.**



Result 2 :

- Skin type and description



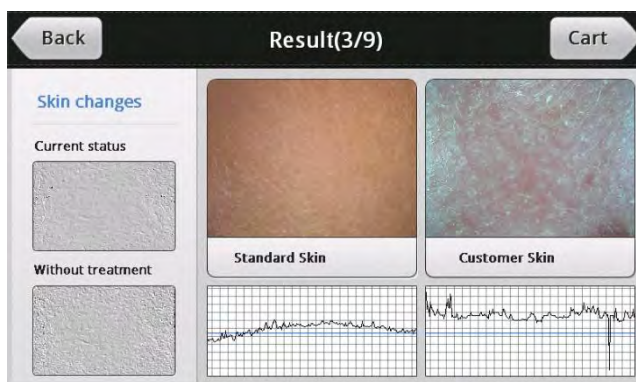
Result 3

- Compare the customer' s skin with standard (ideal) skin image.
- Skin status simulation

Current status: current skin condition.

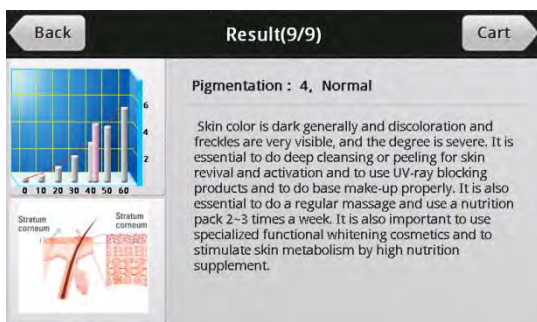
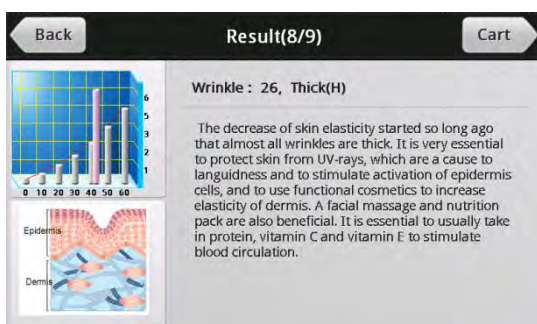
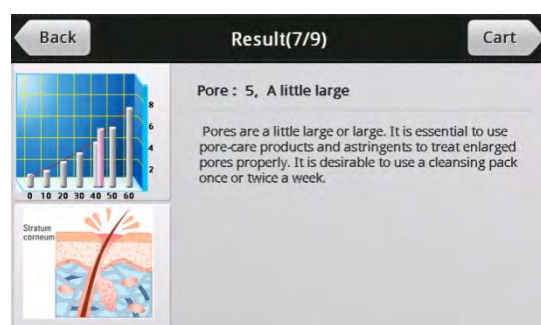
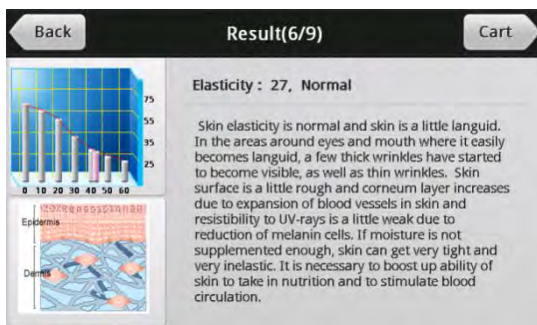
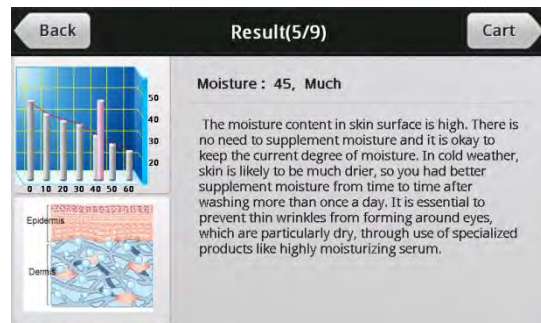
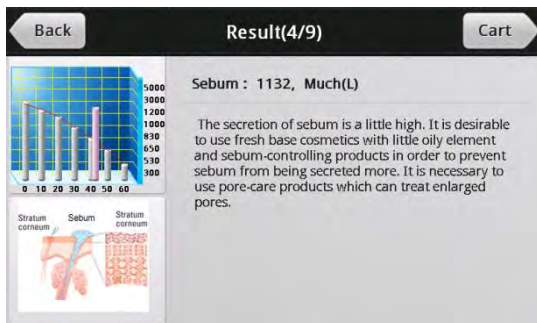
Without treatment: If the skin is left untreated,

the skin condition may worsen than its current state.



7. How to use A-ONE TAB

(3) SD Skin Diagnosis



◆ Result page ◆

Result 4,5,6,7,8,9 :


-Specific description of each test

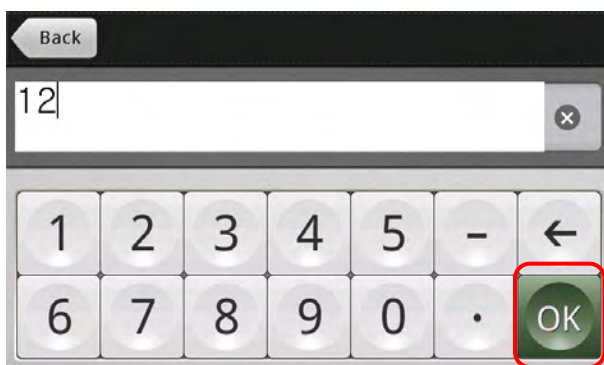
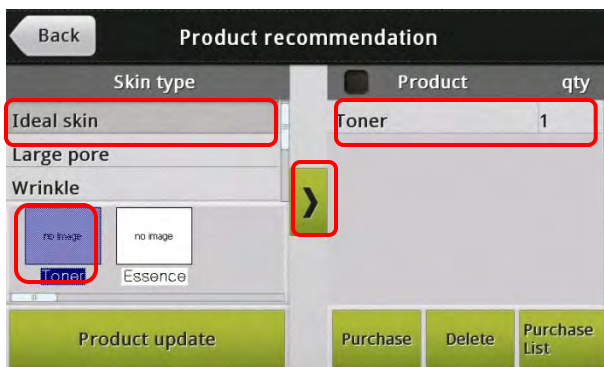
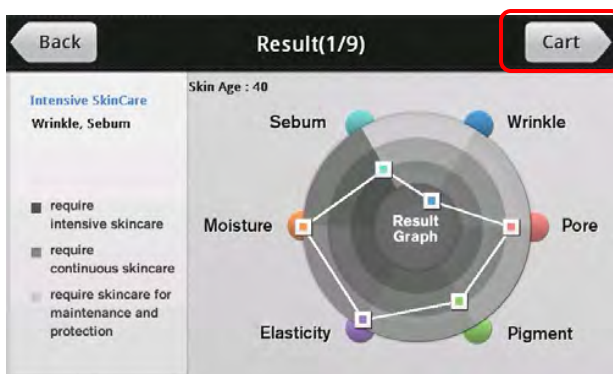
Sebum/moisture/elasticity/pore/wrinkle/
pigment

7. How to use A-ONE TAB

(3) SD Skin Diagnosis

◆ Cart function ◆

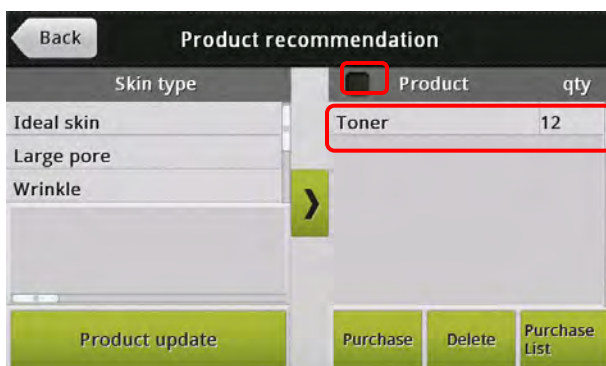
- 1) Click 'Cart' button to go to the product recommendation page.
- 2) Select Skin type.
Recommendable product is displayed according to each skin type.
- ** in case of guest, you can't use cart function.
- 3) Select the product and click  .
the selected product moves to the cart list.
- 4) Double-click the product name on the cart to change the quantity.
- 5) Enter the quantity and click 'OK' .



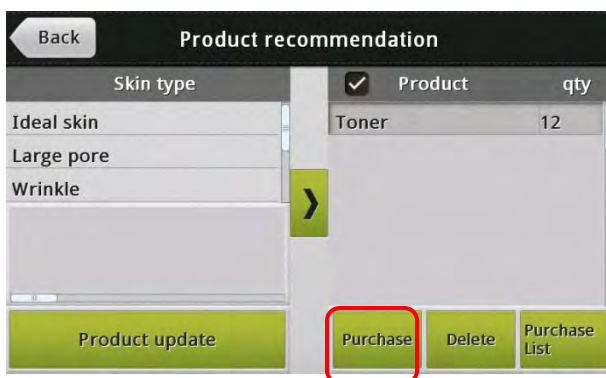
7. How to use A-ONE TAB

(3) SD Skin Diagnosis

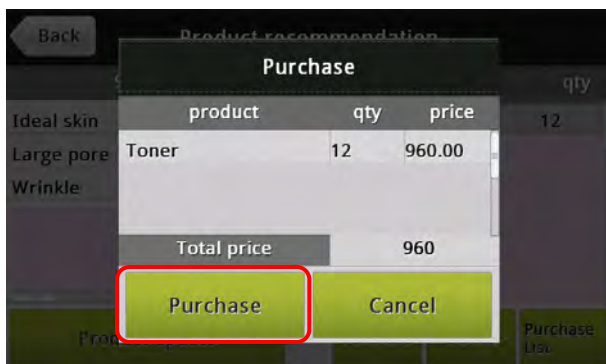
◆ Cart function ◆



- 1) Click the product to purchase.
in case select all items in the list,
mark the black box.



- 2) Click 'Purchase' .

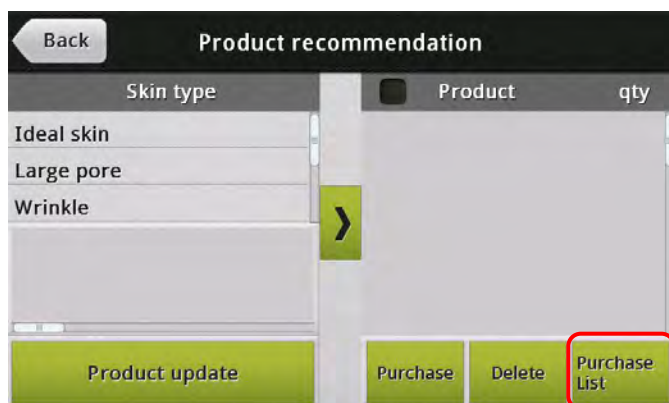


- 3) Click 'Purchase' after check the product ,
quantity and price.
Purchasing is done.

7. How to use A-ONE TAB

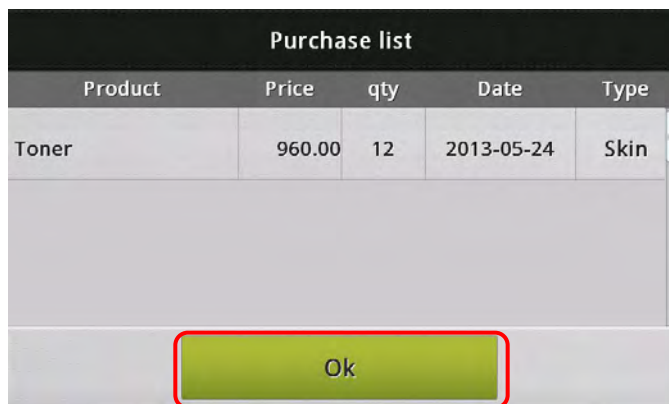
(3) SD Skin Diagnosis

◆ Cart function ◆



1) You can see previous purchase list.

Click 'Purchase list' .



2) The purchased products is displayed with name, quantity, price, the purchase date and type(for skin or hair).

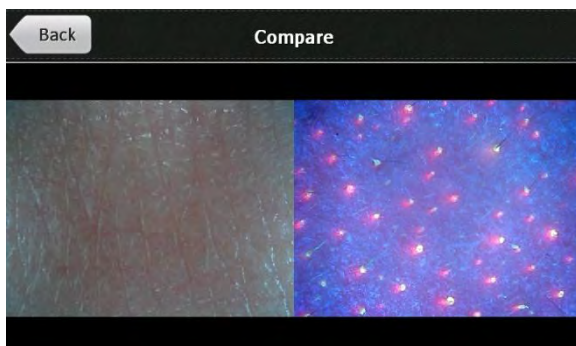
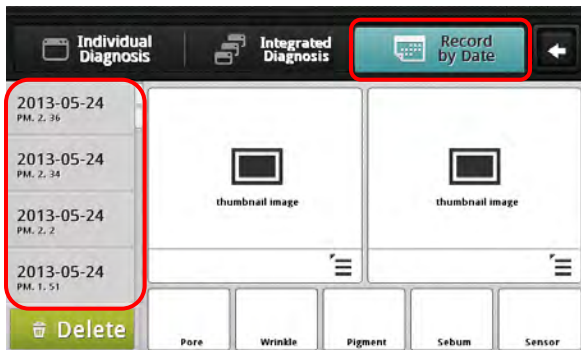
Click OK button to close the Purchase list

7. How to use A-ONE TAB

(3) SD Skin Diagnosis

◆ Record by date ◆

You can see the previous records of each client by date.



- 1) Click 'Record by Date'
- 2) Select a date to see photo and record.
- 3) Drag a below image to above screen.
- 4) Click top-right icon to see the image with full screen.
- 5) Drag Before & After image to left & right screen and click full screen icon to compare both.

7. How to use A-ONE TAB

(3) SD Skin Diagnosis

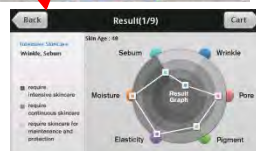
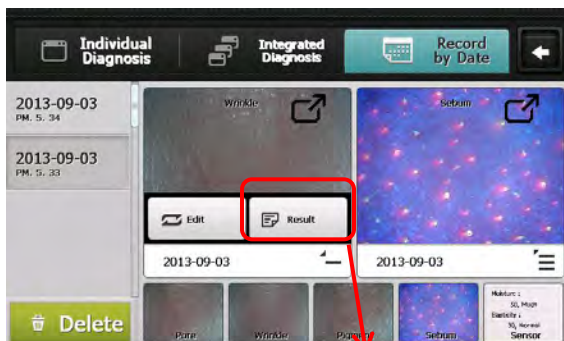
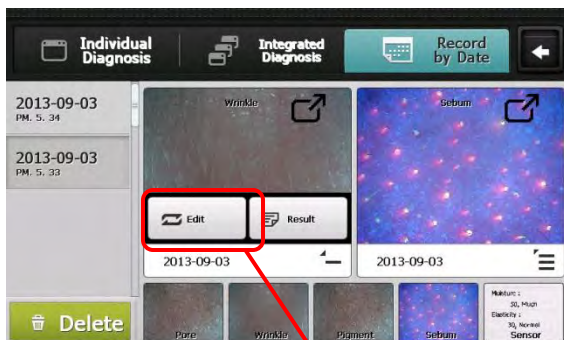
◆ Record by date ◆

6) Click the icon.

7) Click 'Edit' or 'Result'

-Edit : see the taken photo or retake a photo

- Result : go to the result page of the date.



7. How to use A-ONE TAB

(4) HD Hair Diagnosis

◆ HD Diagnosis ◆

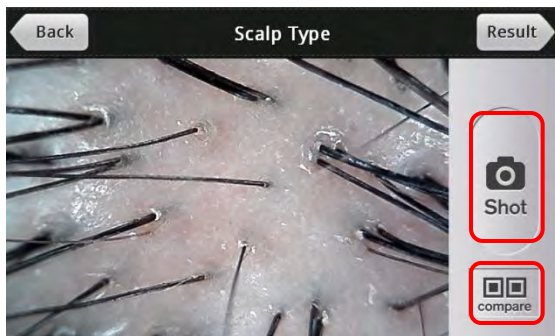
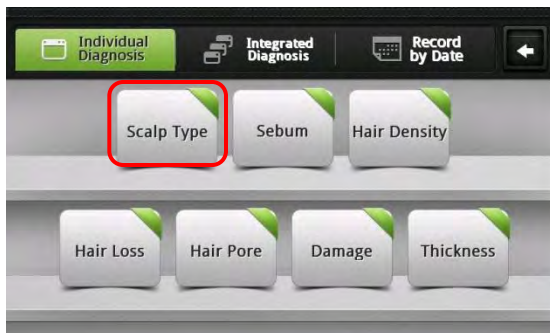
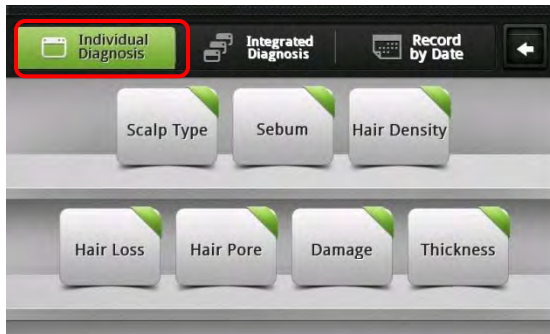


Diagnose Scalp Type / Hair Density /
Sebum / Hair Loss /
Hair Damage / Hair Thickness

Put the camera on your scalp and take a
photo
to measure.

7. How to use A-ONE TAB

(4) HD Hair Diagnosis



◆ Individual Diagnosis ◆

Select certain test item and diagnose separately.

◆ <Scalp> Diagnosis ◆

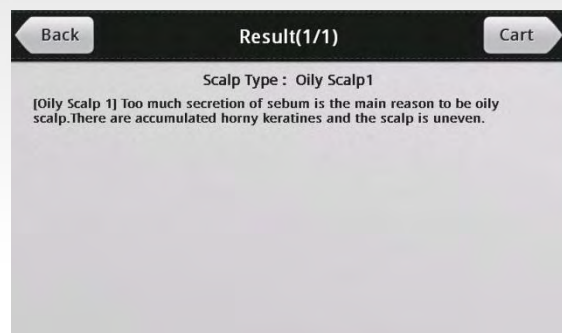
1) Click 'Scalp type' to diagnose scalp type.

2) Put camera on scalp and take a photo by clicking 'shot' .

** ** Click <Shot> to re-take a photo.

3) Click 'compare' and select similar sample.

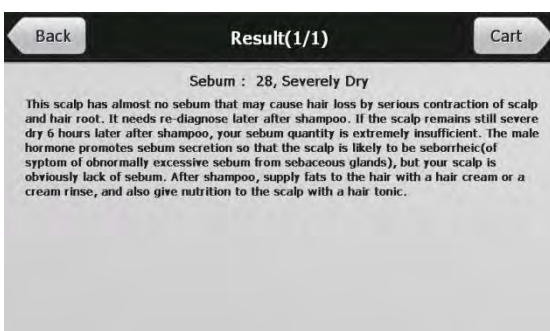
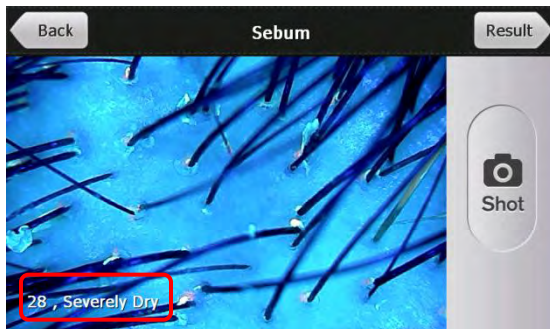
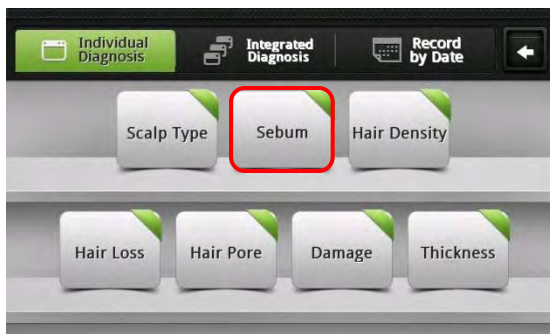
4) Click 'OK' and 'Result' to go to result page.



7. How to use A-ONE TAB

(4) HD Hair Diagnosis

◆ <Sebum> Diagnosis ◆



1) Click 'Sebum,' to diagnose Sebum.

2) Put camera on scalp and take a photo by clicking 'shot' .

** Click <Shot> to re-take a photo.



NEVER aim the beam in or near anyone's eyes.

the test value will be shown automatically at the bottom of left.

3) Click 'Result' to go to result page.

7. How to use A-ONE TAB

(4) HD Hair Diagnosis

◆ <Sebum> Diagnosis ◆

Option: <Sebum> Diagnosis with Sebum Tape

1) Click 'Sebum Tape' on the bottom right.

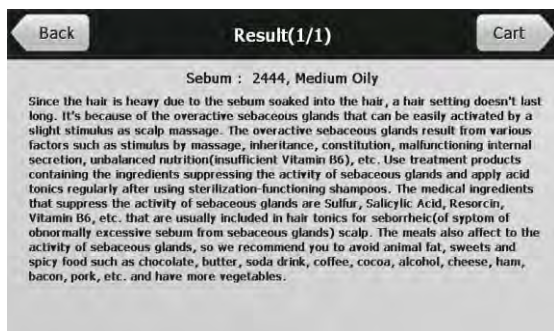
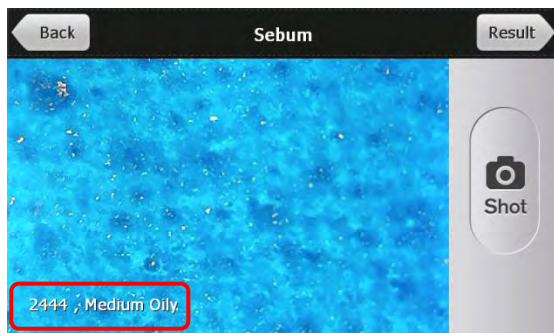
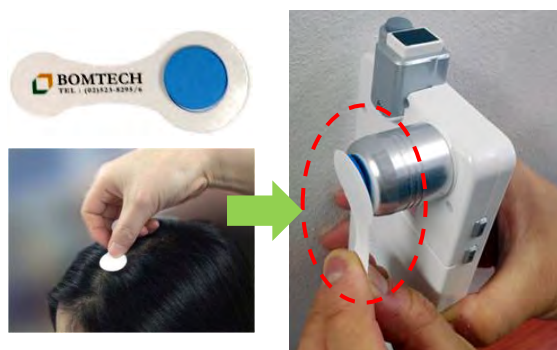
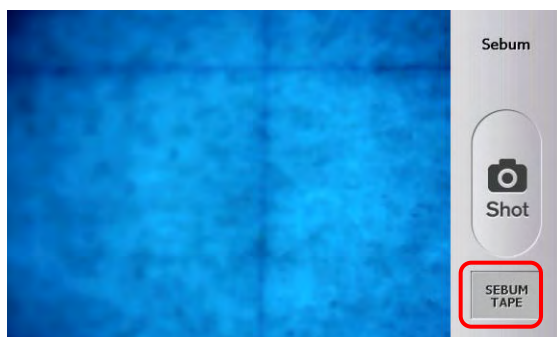
2) Put the sebum tape to the scalp and slightly press the sebum tape for 1~2 seconds.

Put the sebum tape to the camera and take a photo by clicking 'shot'.

** Click <Shot> to re-take a photo.

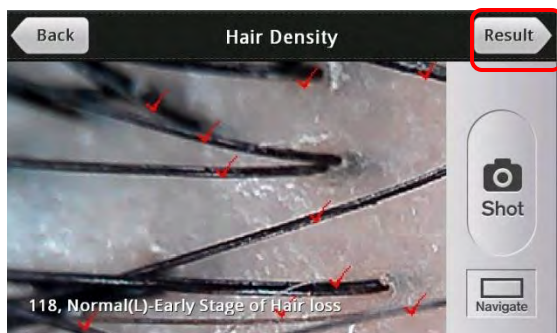
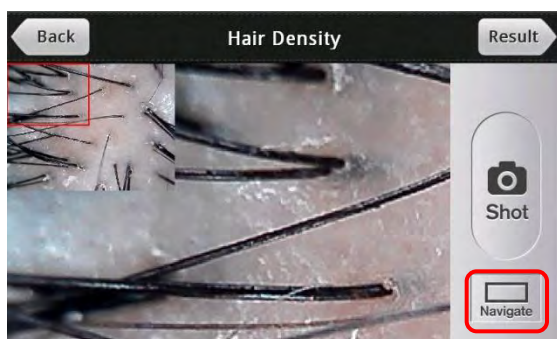
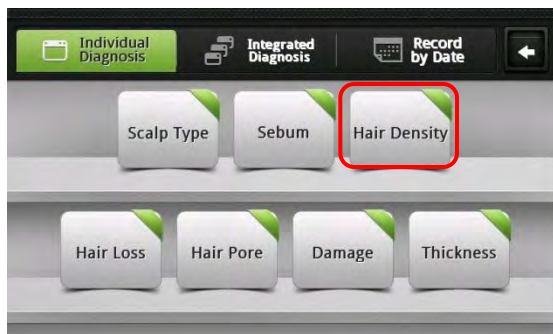
the test value will be shown automatically at the bottom of left.

3) Click 'Result' to go to result page.



7. How to use A-ONE TAB

(4) HD Hair Diagnosis



◆ <Hair Density> Diagnosis ◆

1) Click 'Hair Density' .

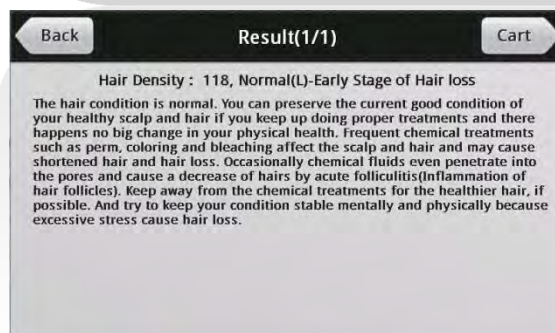
2) Put camera on scalp and take a photo by clicking 'shot' .

** Click <Shot> to re-take a photo.

3) Drag the red box at the left-top and select the most empty part. click each hair to mark.

If you want to change the part to measure the hair density, click Navigate button.

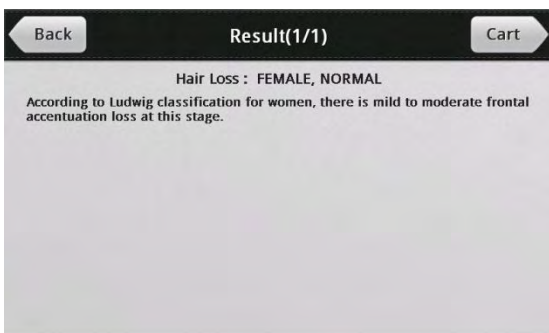
4) Click 'Result' to go to result page



7. How to use A-ONE TAB

(4) HD Hair Diagnosis

◆ <Hair Loss> Diagnosis ◆



1) Click 'Hair Loss' .

2) Select the most similar type of when you see the scalp at top position.

3) Click 'Result' to go to result page

7. How to use A-ONE TAB

(4) HD Hair Diagnosis

◆ <Hair Pore> Diagnosis ◆

- 1) Click 'Hair Pore' .
- 2) Put camera on scalp and take a photo by clicking 'shot' .
** ** Click <Shot> to re-take a photo.
- 3) Click 'compare' and select similar sample.
- 4) Click 'OK' and 'Result' to go to result page.

