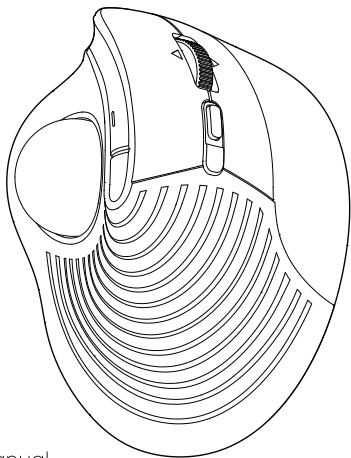


Wireless Vertical Trackball Mouse

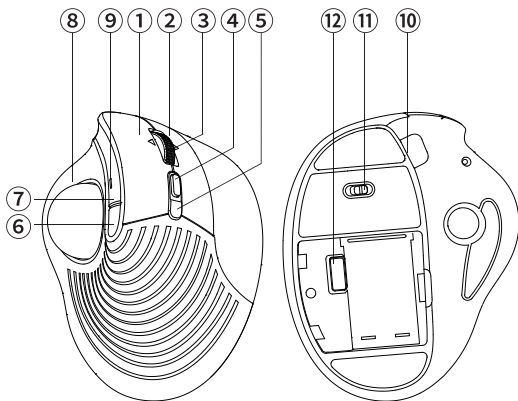


User Manual

Contents

English ----- 05-13

Product Function

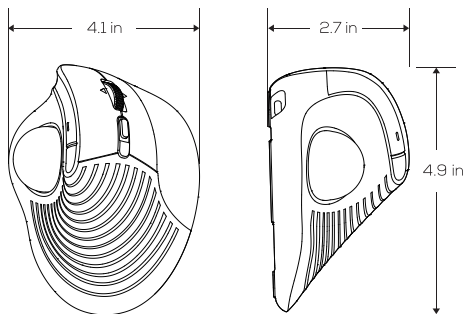


UK/US/CA

- ① Left Button
- ② Right Button
- ③ Middle Button / Speed Scroll Wheel
/ Left and Right Tilt Scroll Wheel
- ④ DPI Switch Button
- ⑤ Mode Switch Button
- ⑥ Move Backward Button
- ⑦ Move Forward Button
- ⑧ Trackball
- ⑨ Mode Indicator / DPI Indicator
/ Charging Indicator / Low Battery
Indicator
- ⑩ Type-C Charging Port
- ⑪ ON/OFF
- ⑫ USB Receiver

US/UK/CA

Specifications

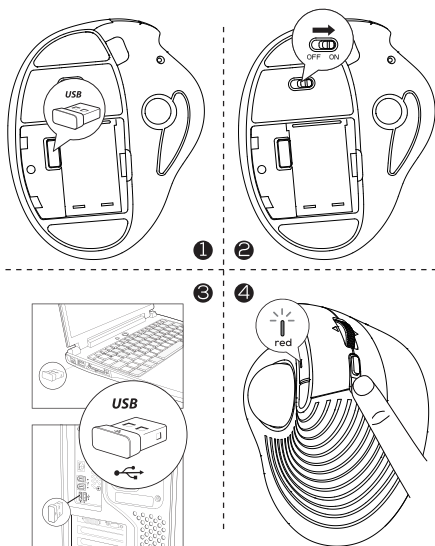


Model	D1186C9Z
Size	12.5 × 10.4 × 6.8 cm / 4.9 × 4.1 × 2.7 in
Weight	151.5 g
DPI	600 - 800(Default) - 1000
Connection Mode	2.4G USB Receiver + BT1 + BT2
Rechargeable Lithium Battery	500mAh
Transmission Distance	>10 m
Compatibility	macOS / Windows 7 / Windows 8 / Windows 10 / iOS / Android

Package Content

- 1 × Wireless Vertical Trackball Mouse
- 1 × Type-C Charging Cable
- 1 × 2.4G USB Receiver
- 1 × User Manual

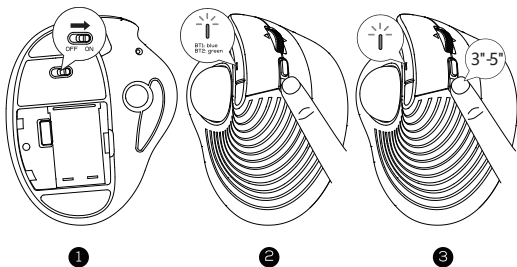
2.4G Connection



- 1 Remove the 2.4G USB receiver from the bottom of the mouse.
- 2 Turn on the mouse.
- 3 Insert the USB receiver into your computer's USB port.
- 4 Press the mode switch button to switch to 2.4G mode (factory default) and the mode indicator will turn red. The red light goes out, indicating a successful connection.

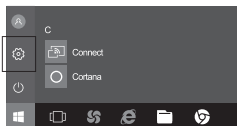
Bluetooth Connection

Windows System (Take Windows 10 as an example)



- 1 Turn on the mouse.
- 2 Press the mode switch button to switch to Bluetooth mode (BT1 or BT2), and the mode indicator will turn blue (BT1) or turn green (BT2).
- 3 Long press the mode switch button for 3-5 seconds, the mode indicator flashes rapidly, and the mouse enters Bluetooth pairing mode.

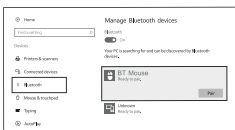
- 4 Click the "Bluetooth devices" button on the computer.



- 5 Click the "Add or remove Bluetooth devices" button.



- 6 Search the Bluetooth "BT Mouse", and click the pairing button.



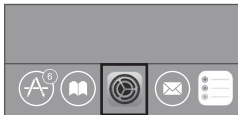
- 7 If the pairing is successful, the mode indicator lights up for 2 seconds and then goes out.



macOS System

Please operate the Bluetooth connection steps (1~3) before pairing.

- 1 Click the "System Preferences" button on the Mac.



- 2 Click the Bluetooth button on the system preference folder.



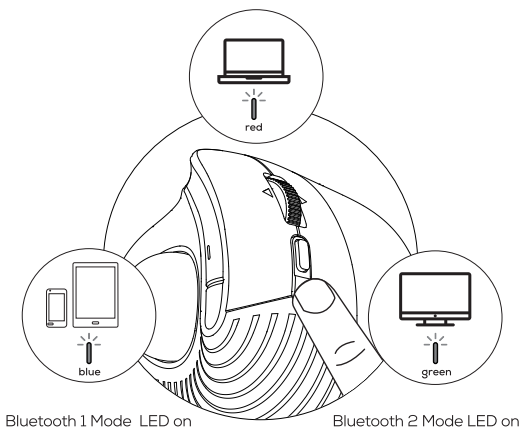
- 3 Search the Bluetooth "BT Mouse", and click the pairing button. If installed completely, the mouse could be used normally.



Mode Switch

- (1) This mouse supports three connection channels: 2.4G, BT1, and BT2.
- (2) Once the mouse is connected to devices via 2.4G and the two BT channels, you can switch between the connected devices by pressing the mode switch button.
- (3) When switching to a different connection channel, the corresponding mode indicator will light up.

2.4G Mode LED on



Charging

- (1) When the battery is low, the low battery indicator will flash in the current channel's light color.
 - (2) In order not to affect the experience and function of the mouse, please charge in time using the included Type-C cable to a standard 5V charger or a computer USB port.
 - (3) The indicator will glow red while the mouse is charging and will go out when fully charged.
- Note: For your best experience, please fully charge the mouse before your first use. Do not use the fast charger to charge the mouse.

Sleep Mode

The mouse automatically conserves battery by entering sleep mode after: 30 minutes of inactivity in Bluetooth mode, or 10 minutes of inactivity in 2.4G mode. Press any button or scroll the trackball to exit sleep mode.

DPI Adjustment

This mouse has 3 adjustable DPI levels: 600, 800(Default), 1000. Press the DPI button to switch between the levels. The DPI indicator light will flash according to the selected DPI level:
600 DPI: Flashes once
800 DPI: Flashes twice
1000 DPI: Flashes three times

Scroll Wheel Function

- (1) Scroll the wheel: Browse up/down pages.
- (2) Tilt the wheel left/right: Move the table or web page left or right.

Important Safety Instructions

Please note: Prolonged or repetitive use of any keyboard or mouse may cause musculoskeletal injuries. We recommend users take frequent breaks and avoid excessive use of any keyboard or mouse.

- Avoid dropping.
- Do not disassemble.
- Do not expose to liquids.
- This product is suitable for moderate climates only.
- The maximum ambient temperature during use of this product must not exceed 40 degrees.
- Open flame sources, such as candles, must not be placed on this product.
- Only use a dry cloth or brush to clean this product.

FAQ1

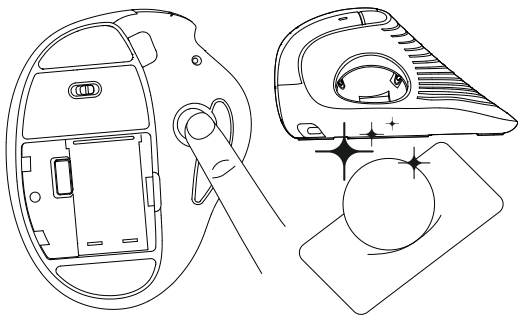
How to Clean Your Trackball Mouse?

(1) Push the trackball from the bottom of the mouse.

(2) Use a humid cloth to clean the trackball, the surface of the inner trackball housing, and the sensor. Then use a cotton swab to clean the dust on three white rollers.

Note:

- Don't clean the mouse and trackball with alcohol or wet wipes containing alcohol.
- When you clean near the optical sensor, please wipe it carefully to avoid damaging it.



FAQ2

How to Deal with Cursor Issues (Sticking/Jumping/Slow Movement)?

- (1) Check if the DPI button is pressed by mistake (DPI adjustment).
- (2) If the maximum DPI still fails to meet the usage requirements, check whether the computer cursor speed is adjusted too low.
- (3) Please clean the trackball for better performance.

FAQ3

How to Reprogram Mouse Buttons?

- (1) All keys are not programmable.
- (2) Forward/Backward buttons are not compatible with macOS.

FAQ4

How to Resolve Connection Issues or Lag?

- (1) Check Battery: Ensure the mouse is adequately charged.
- (2) Re-pairing: Disconnect and reconnect the mouse to the device.
For Bluetooth: Go to your device's Bluetooth settings, remove the mouse, and pair it again.
For 2.4G: Reinsert the USB receiver into a different USB port.
- (3) Interference: Ensure there are no obstacles, electronic devices, or metal objects causing interference between the mouse and receiver.
- (4) Distance: Keep the mouse within the optimal range of the receiver (typically within 10 meters).
- (5) Update Drivers: Ensure your device's Bluetooth or USB drivers are up to date.

FCC Statement

This device complies with Part 15 of the FCC Rules. Operation is subject to the following two conditions: (1) This device may not cause harmful interference, and (2) this device must accept any interference received, including interference that may cause undesired operation.

This equipment has been tested and found to comply with the limits for a Class B digital device, pursuant to Part 15 of the FCC Rules. These limits are designed to provide reasonable protection against harmful interference in a residential installation. This equipment generates, uses, and can radiate radio frequency energy, and if not installed and used in accordance with the instructions, may cause harmful interference to radio or television reception. However, there is no guarantee that interference will not occur in a particular installation. If this equipment causes interference to radio or television reception, which can be determined by turning the equipment off and on, the user is encouraged to try to correct the interference by one or more of the following measures:

- Reorient or relocate the receiving antenna.
- Increase the separation between the equipment and receiver.
- Connect the equipment into an outlet on a circuit different from that to which the receiver is connected.
- Consult the dealer or an experienced radio/TV technician for help.

Note: Modifications not approved by the party responsible for compliance could void user's authority to operate the equipment.