

# 正面

HOLL 汇尔®

## Holl WiFi Disk Pen R220 User Quick Guide

©2011 Copyright by HOLL Technology Co.Ltd. All rights reserved.

Thank you for purchasing Pen R220 series is the world's first mini wireless business treasure, weight is just 80g. Provide wireless storage, sharing, wireless audio, wireless router, Mobile power supply, card reader and wireless laser pointer, and other business functions, is the best partner of business travel and PPT presentation. Letting your phone and PC easily share the contents of wireless box anytime and anywhere

### Functionality :

#### Mobile HDD

TF(Micro SD)card port support maximum 32GB storage card, also can as TF card reader.

#### Wireless storage

Support contents auto-sorting ,read, delete, share and sent

#### Wireless audio

Support multiple formats of wireless audio :

#### Wireless router

Support cable turn wireless and wireless relay function.

#### Wireless relay

Realization of signal relay, to extend the range of wireless network coverage

#### Mobile power supply

Built-in 2600 mAh battery, charging for phone, PC in emergency.

#### Wireless laser pen

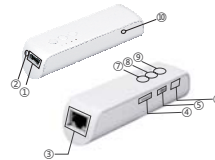
Through a PC or laptop with Pen R220 used in combination, is the perfect choice to instead of ordinary laser Pen.

### One、Accessories list

Pen R220 the package and list :

1. Major Product one Pen R220.
2. One micro USB2.0 charging line
3. User instruction.
4. Certificate of approval and warranty card

### Two: Products pictorial view



### 1. Hardware interface Introductions.

No.	Port	Logo	Function details
①	USB2.0		Charging for smart devices by this port.
②	Laser lamp or LED light		Laser lamp or LED lights, laser maximum distance of 50 meters.
③	RJ45 port		Support dynamic and static IP, The default for DHCP and dynamic . if need turn static IP, use phone or PC by WIFI connect Holl APP to set
④	TF CARD port		Support Maximum of 32G TF card storage extension.
⑤	Micro USB2.0 port		Use Micro USB2.0 line connect charger and Pen to charge. Can used as U disk when Pen is shutdown,

No.	Port	Logo	Function details
⑥	Power button		Power display or open, shutdown button Long press the power button, if the machine no faction, charge it.
⑦	Laser light		Laser lamp button
⑧	Page down		Laser pen page down
⑨	Page up		Laser pen page up
⑩	Reset port		When the Pen is working ,press the reset button, the interior system parameters will be restored the factory setting ,then automatic shutdown.

### 2. LED indicator light instruction.

Referent	Name	Status	Detailed instrction
	Wifi	Blue light flashing	The blue light flash three times when starting up.
		Blue light flashing	The blue light flash once per second after starting
	WLN	Green ( bright )	Products through the wireless relay to other wireless devices.
		Green ( Not bright )	Not by wireless relay to other wireless
	Charging	Yellow or Green ( Bright )	The yellow light is bright, after full charging the green light bright.

Referent	Name	Status	Detailed instrction
	Battery power	Red ( Bright )	Battery is insufficient, the red light, to remind the user needs to recharge.

### Three、Software Usage

#### 1. Holl micro manager APP download and installing

Holl App support Android,iOS,Windows three main operating system,Please download the right App according to your smart devices operating system.


iOS Holl micro manager download and install	iOS system
Please search Holl Apk in "App Store " or scan the two-dimension code in the right to download the latest Holl APP . Click "Install" to make Holl App installed successfully in your smart devices IOS ( iPhone/iPad/iPod),	

Android Holl micro manager download and install	Android system
Please search Holl Android APK in "Android market" or scan the two-dimension code in the right to download ,then click "Install" to install the latest Holl Android App successful.	

Windows Holl micro manager download and install	Windows system
Please search Holl Windows APK on website www.holl.com.cn or scan the two-dimension code in the right to download the latest Windows App , then click"install"to install the Windows App successful .	

## 反面

### 2. Boot device

Press the button  until the blue WIFI indicator light flash three times, when the blue WIFI LED flashing, the device ready to work.

### 3. Holl Micro manager using instruction

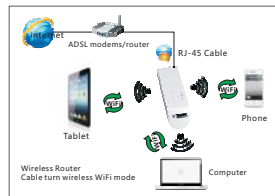
Wireless connection: when Pen is working, open the Holl Micro manager, click "set up" → "WLAN" connect Holl wireless box successful, "Local area" is phone or Tablet internal storage of date. "Wireless" is Holl wireless box storage of date. Users can classify and manage your device's storage of date by Holl micro manager.

### 4. Device shutdown

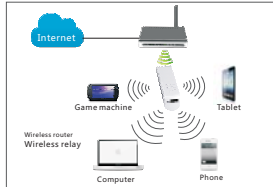
When the product is working, press the power button until the blue WIFI indicator light turn off.

### Four. Application scenarios

Cable turn wireless and shared network

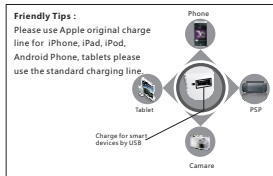


### Wireless relay



### Five. Mobile power supply Pen R220 charging instructions.

Connect devices' charge line to Pen's  USB2.0 port to charge for iPad, iPhone, Android,



### Six: Charging for Pen R220

The two ways of charging for Pen when the power is running out :  
1.Adapter charger : Connect Micro USB2.0 of Pen and the USB 2.0 of adapter charger by USB charging line.  
2.Computer USB : Connect Micro USB2.0 of Pen and USB2.0/3.0 of computer by USB charging line.



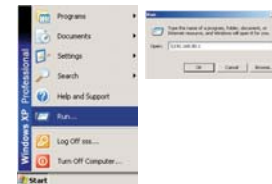
The Micro USB2.0 of charge line  
Micro USB2.0  
Please insert this port


### Charging notes :

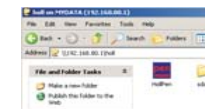
1. Please choose adapter charger output is 5V(1.5 A-2.0A), such as the charger of iPhone, iPad, Android;
2. Charging time : the charger is 5V 1A need about 4 hours;
3. Please stop charging for others devices when charging for Pen.

### Seven: The instruction of Laser pen usage.

1. Starting up the Pen R220.
2. Using PC or computer connect Pen R220 by WIFI.
3. After the connection, click "Start" then "Running", input \\192.168.80.1 and "enter".




4. Entre Holl files first, copy  HollPen.exe to disk Chrome directory, then double click to work.



- 5 Find the picture as below, click

"Connect" button to use Pen Laser Pen.



6. Please click the lower right corner Pen logo,  click "connect" to starting up Laser pen if you need anytime..



### Eight. Firmware upgrade

Welcome users download the latest corresponding firmware on Holl website. copy to Box, open the wireless function then run Holl App and enter the configuration management interface to upgrade the firmware.

More details please check on [www.holl.com.cn](http://www.holl.com.cn) or call 400-853-882

### FCC STATEMENT

1.This device complies with Part15 of the FCC Rules. Operation is subject to the following two conditions:  
(1)This device may not cause harmful interference, and  
(2)This device must accept any interference received, including interference that may cause undesired operation.

2.Changes or modifications not expressly approved by the party responsible for compliance could void the user's authority to operate the equipment.

NOTE: This equipment has been tested and found to comply with the limits For a Class B digital device, pursuant to Part 15 of the FCC Rules. These limits Are designed to provide reasonable protection against harmful interference in a residential installation. This equipment generates, uses and can radiate Radio frequency energy and, if not installed and used in accordance with the instructions, may cause harmful interference to radio communications. However, there is no guarantee that interference will not occur in a particular installation.If this equipment does cause harmful interference to radio or television reception, which can be determined by turning the equipment off and on, the user is encouraged to try to correct the interference by one or more of the following measures:  
--Reorient or relocate the receiving antenna.  
--Increase the separation between the equipment and receiver.  
--Connect the equipment into an outlet on a circuit different from that to which the receiver is connected.  
--Consult the dealer or an experienced radio/TV technician for help.

3. FCC Radiation Exposure Statement:  
This equipment complies with FCC radiation exposure requirement. The device can be used in portable exposure condition without RF striction.