

RTSD5000

Quick Start Manual



Before Getting Started

※ For better performance on the Miracast function, must use after re-booting your Smartphone.

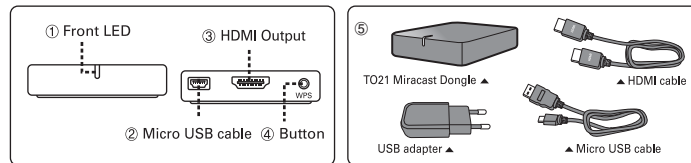
- ✓ Before connecting cables, please turn off all devices(TV/Dongle).
- ✓ Use the power cable(Micro USB cable) and adapter inside the package.
- ✓ The product's Icon and UI can not be changed when Upgrading OS/Driver without the user's premission.

※ Some of the smartphone models specification depending on countries may not work with the Miracast Dongle.

Must check the device whether it supports the functions.

※ Performance differ by wireless environment.

Appearance



- ① **Front LED** : Use of checking Dongle's Functioning and Power supply.
- ② **Micro USB cable** : Only for use of power supply.
- ③ **HDMI Output** : Only for use of Digital A/V Output.
- ④ **Button** : Use for WIFI mode and Dongle setting.
- ⑤ **Package** : TO21 Miracast Dongle, HDMI cable, Micro USB cable, USB adapter, Quick Start Manual

Installation

1. If your Display does not have USB port

: Connecting Micro-USB cable to USB adopter and plugging to a Out-let.

If your Display has USB port

: Connecting Display(TV/Monitor) and Miracast Dongle with the Micro-USB cable.

2. Connecting HDMI cable to the Dongle's HDMI port.

3. Connecting the other end of the HDMI cable to a Display supporting HDMI.

※ The purpose of the Micro USB is in order to supply power to the Miracast Dongle. Even after connecting to the display and the Dongle does not activate, please connect the Micro-USB cable to the adopter and use it by plugging in to the Outlet.

How to use RTSD5000

<Notice>

- ✓ Please check whether your Smartphone supports Miracast.
- ✓ In order to use the DLNA function, a Smartphone or Laptop must be installed with a DLNA App or program.
 - ※ For DLNA, please check whether your Smartphone/TabletPC/Laptop supports DLNA function.
 - ▶ Multimedia contents could run different, depending on Smartphones and Apps.

Examples) Google's Video, Play movie / imediashare: www.imediashare.tv/support / Samsung's AllShare / LG's SmartShare / etc.

✓ For DLNA, must need an external AP(WiFi Router) sharing the same network.

※ For Video Manuals & Instruction, please visit www.miracast.co.kr or search 'to21 miracast' on YouTube.

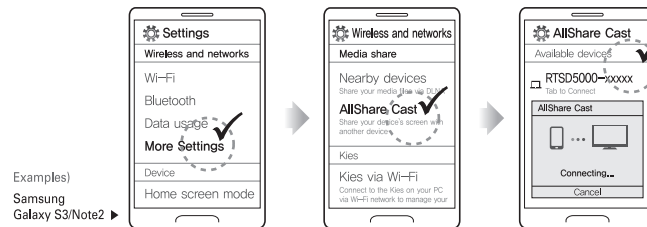
1. Miracast Setting

1) Dongle Setting :

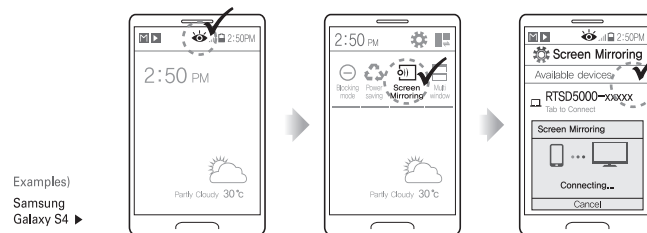
After connecting power, wait till you find 'Ready to connect' appearing on the screen, including the 'Name' and 'ID'.

2) Smartphone Setting :

- ① Smartphone's Wi-Fi must be 'ON'.
- ② Go the setting menu and search for Miracast, select to activate.
 - ▶ 'Miracast' can be positioned in different location inside the menu, also the name could be different by Smartphone's Manufacturer.



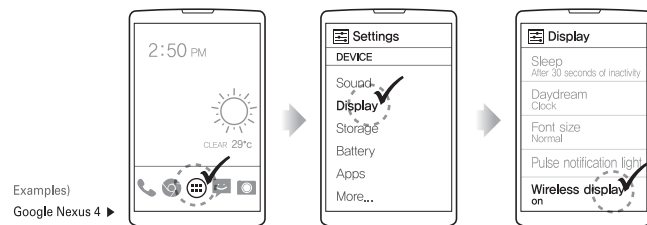
Examples)
Samsung
Galaxy S3/Note2 ▶



Examples)
Samsung
Galaxy S4 ▶



Examples)
LG
Optimus G/Gpro ▶



Examples)
Google Nexus 4 ▶

- ③ After selecting Miracast, your Smartphone will start searching for the Dongle's signal. Find a match with your Dongle's ID showing up on the screen, and select.
- ④ After 7~9seconds, your Smartphone screen will show up on the display and your successfully connected.

※ After use of the Miracast, please turn off the Miracast function on your smartphone. Miracast will not end and continually miracast on the display , untill you turn off the function.

※ For Video Manuals & Instruction, please visit www.miracast.co.kr or search 'to21 miracast' on YouTube.

2. DLNA Setting

1) Connection by using the WPS(Wi-Fi Protection Setup) Button on AP Routers.

- ① Press double times on the Button placed on Dongle's back-side.
- ② On the TV Screen, "Trying to connect to external AP" message will show up with 2minutes countdown. Press one time on the AP router's WPS button within 2minutes.
- ③ Automatically, the Dongle will be connected to the AP Router through Wi-Fi.
- ④ After the Dongle automatically re-boots and you find a new pair of AP router's Name/IP information showing up on the screen, your Dongle and AP router is successfully connected.

2) Connecting by AP router, using PC or Smartphone (When you can't find a WPS button on your AP router)

- ① Press and hold 5~10seconds(untill you see 3 times red blink on the Dongle's LED)
- ② On the TV Screen, "Web Configuration Mode" message will appear.
- ③ On your PC or Smartphone, turn 'On' the Wi-Fi and select the SSID, AP router's SSID which you wish to setup DLNA.
- ④ On your PC or Smartphone, open up a Web browser and input '192.168.8.1' on URL.
- ⑤ On your PC or Smartphone's Web browser, Dongle's setting page UI will appear. Bottom page, "External AP Configuration" slot, please input the following information,
 - Network Name/SSID: "AP router's SSID name"
 - Security type: "AP router's security methods"
 - Key*: "Password for SSID"
 - Press "Save This External AP"
 - After the page changes, select "Reset Dongle"
- ⑥ After the Dongle automatically re-boots and you find a new pair of AP router's Name/IP information showing up on the screen, your Dongle and AP router is successfully connected.

3) DLNA play

- ① On your Laptop/PC/Tablet PC/Smartphone, Select and connect to the Wi-Fi spot which has been setup with the Dongle.
- ② On your Laptop/PC/Tablet PC/Smartphone, activate DLNA program/App.
- ③ On your Laptop/PC/Tablet PC/Smartphone, must select DLNA player as "RTSD5000 (Dongle)" when playing the DLNA App.
- ④ DLNA performance could be different by the environment. (AP routers ability/Smartphone ability/etc.)

※ For Video Manuals & Instruction, please visit www.miracast.co.kr or search 'to21 miracast' on YouTube.

3. Initializing Miracast Dongle(RTSD5000)

Wish to change AP router or wish to start completely new, this function helps you to initialize the settings of the Dongle.
: Press and hold for 15~20seconds and release, the Dongle will automatically initialize itself.

Technical support

Thank you for purchasing ourTO21's product!

For more detail informations / technical support, please visit our website, www.miracast.co.kr

• Specification

• Wi-Fi : IEEE 802.11n 2G/5G Dual Band	• Main Chip : 1080p 30/60 frame Video Decoder
• Input Voltage : DC5.0V ~, 500mA	• A/V Output : HDMI 1.3/HDCP 1.4
• Temperature : -20℃ ~ +50℃	• Power supply : USB type DV Adapter
• Frequency : JP. 2412~2472, 5180~5240MHz EU. 2412~2472, 5180~5240MHz US. 2412~2462, 5180~5240, 5745~5825MHz	

CE1177

① FCC RF exposure requirements :

The antenna used with this module must be installed to provide a separation distance of at least 20cm from all persons, and must not transmit simultaneously with any other antenna or transmitter except in accordance with FCC multi-transmitter product procedures.

AS(customer service)

- For inquiries about the product, please contact below.

Web support : www.miracast.co.kr

Email Support : client@miracast.co.kr