

# **GSM/GPRS/GPS TRACKER MANUAL**



# Preface

Thank you for purchasing the GD01. This manual shows how to operate the device smoothly and correctly. Make sure to read this manual carefully before using this product. Please note that specification and information are subject to changes without prior notice in this manual. Any change will be integrated in the latest release. The manufacturer assumes no responsibility for any errors or omissions in this document.

## Content

<b>1 Summary</b>	<b>3</b>
<b>2 Application</b>	<b>3</b>
<b>3 Hardware description</b>	
<b>3.1 Front face</b>	<b>3</b>
<b>3.2 Rear face</b>	<b>3</b>
<b>3.3 Side face</b>	<b>3</b>
<b>3.4 Bottom face</b>	<b>4</b>
<b>3.5 Interior</b>	<b>4</b>
<b>4 Specifications</b>	<b>4</b>
<b>5 Usage</b>	
<b>5.1 SIM card installation</b>	<b>6</b>
<b>5.2 Tracker installation</b>	<b>6</b>
<b>5.3 Startup</b>	<b>6</b>
<b>5.4 Administrator Setting</b>	<b>7</b>
<b>5.5 Change the password</b>	<b>7</b>
<b>5.6 Authorization</b>	<b>7</b>
<b>5.7 Base Station polling</b>	<b>7</b>
<b>5.8 SMS polling</b>	<b>8</b>
<b>5.9 Call polling</b>	<b>8</b>
<b>6 Online Tracking</b>	<b>8</b>
<b>7 Cautions</b>	<b>12</b>

## 1 Summary

Working Based on existing GSM/GPRS network and GPS satellites, this product can locate and monitor any remote targets by SMS or internet.

## 2 Applications

- Vehicle rental / Fleet management etc
- Protect child / the old / the disabled / pet etc
- Provide peace-of-mind for businessmen
- Personnel Management
- Logistics management
- Track criminals secretly

## 3 Hardware Description

### 3.1 Front face



### 3.2 Rear face



### 3.3 Inner

### 3.4 Accessory

## 4 Specifications

- 1.Small, lightweight, and easy to install
- 2.Recall ratio less than three thousandth



### 3.Built-in monitoring CPU

#### **Feature**

- GPS+GSM+GPRS wireless network
- Built-in high sensitive GPS chipset (UBLOX G7020)
- Built-in GSM&GPS antenna
- Check location information via SMS and internet.
- Real-time tracking
- To start working automatically after electrifying
- Built-in monitor circuits to avoid breakdown
- Wide voltage input range
- Built-in acceleration sensor for saving power intelligently and Resisting static drifting
- Check location via platform service
- Authority management
- Password protect
- AGPS
- Setting Automatically upload information interval
- GEO fence
- Overspeed warning
- Blind spots make a report after the login event
- Support Mobile phone tracking

#### **Specifications**

- GSM: 850/900/1800/1900 MHz
- GPRS: Class12, TCP/IP built-in GSM Module
- GPS: UBLOX G7020

- Frequency: L1,1575.42MHz C/A code
- GPS Channels: 50
- Tracking sensitivity: - 162dBm
- Acquisition sensitivity: - 148dBm
- Locating time cost: Hot start: < 1sec(Open Sky)

Warm start:<15 sec

Cold start: < 27 sec(Open Sky)

- GPS antenna: Built-in high gain ceramic patch antenna
- Working voltage/current: 3.5-4.2vDC/30mA
- Three LED indicators: GPS-blue; GSM -green; Power-red
- Application environment: Operating temperature:-40 °C to + 85 °C

Operating humidity:5% to 95% RH

- Dimensions: 42.0( L) X 42.0 (W) X 13.5(H) mm

## **5 Usage**

### **5.1 SIM card installation**

- 1 Open the rear cover.
- 2 Put the SIM card into the holder.
- 3 Close the rear cover and tighten the screws.

#### **Note:**

- 1 Make sure the SIM card opens the GPRS.
- 2 Make sure the function of SIM card PIN code off/call transfer off/call display off.
- 3 Make sure the SIM card is put in right condition.
- 4 Make sure you have paid enough money to Telecommunications Service Provider

## 5.2 Tracker Installation

5.2.1 Install the tracker in a concealed place but can't effect the GPS signal.

5.2.2 Be sure to put the front side of the unit upward.

## 5.3 Startup

5.3.1 Booting: The tracker will startup after power on. The GPS and GSM leds will twinkle for some seconds ( indicate the signal searching ) .

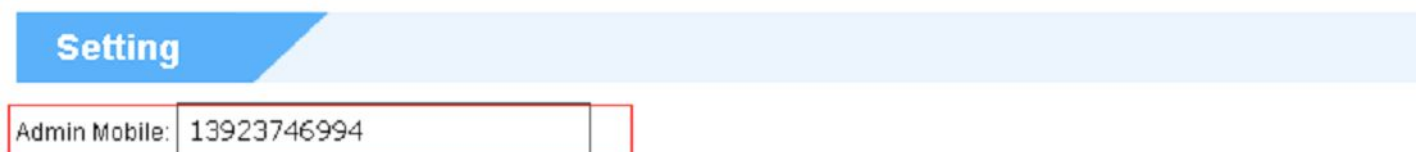
5.3.2 Working: The power led will be long bright after start. The GPS and GSM leds will be off.

5.3.3 Power Saving Mode: When the vehicle is stop for long time, the tracker will be into the Power saving mode automatically.

5.3.4 Shutdown: The Inner-battery under 3.5v, the machine will stop to work

## 5.4 Administrator Setting

1.through web.Fill the administrator's phone number in the web :



The screenshot shows a web interface with a blue header bar containing the word "Setting". Below the header, there is a text input field labeled "Admin Mobile:" with the number "13923746994" entered. The input field is outlined with a red border.

2. through the sms。

Send SMS “admin password #” to the unit. Note: The password is 6 digit,initiation is “000000”

For example: “ admin 000000 #”.

## 5.5 Change the password

Send SMS “pwd+old password+new password #” to change the password.

For example: “pwd 000000 111111 #”. New password is 111111, the old password is 000000.

**Remark:**

5.5.1 The default password of this unit is 000000.

5.5.2 Be sure keep the new password in mind.

5.5.3 Make sure the new password is in 6 digits, otherwise the tracker can not recognize it.

**5.6 Authorization**

There are 4 users can be authorized. The user have limited authority of some sms cmd.

Send SMS “user+index+mobile phone number #” to the tracker.

For example: “user 2 13861005237 #”. It means user 2, and phone number is 13861005237.

**Remark:**

5.6.1 the digit can be set from 1 to 4.

5.6.2 Send SMS “ user 0 #” to delete all users

**5.7 Base Station Polling**

Administrator/user

You can get the Base Station informations by send SMS “cell #”

**5.8 SMS Polling**

Administrator/user

By sending SMS “loc #” to the unit, you can get the informations of the adrerss,link of map.

**5.9 Call Polling .**

Call the number of the SIM card and ring off after 1 rings. Y ou can get more informations of the localtion.Before using this function, you need be the administrator of device first.

## 6.0 Online Tracking

### 6.0.1 Login URL: www.gpstrackersys.com by IE

GPS Tracking System

Monitoring Device Fence Alarm Statistics

[中文版]

\* Login Name :

\* Password :

\* Verify Code :  07566

Login Experience [Mobile]

Don't you have one USERID? [click here](#)

### 6.0.2 Click regist button as below

GPS Tracking System

Monitoring Device Fence Alarm Statistics

[中文版]

\* Login Name :

\* Password :

\* Verify Code :  07566

Login Experience [Mobile]

Don't you have one USERID? [click here](#)

### 6.0.3 Input your information as below

GPS Tracking System

Monitoring Device Fence Alarm Statistics

**REGISTER**

\* Login Name: 000000000 ✓

\* Password: \*\*\*\*\* ✓

\* Re-enter Password: \*\*\*\*\* ✓

\* Email: mr.sunzhenhua@yahoo.com.cn ✓

\* Verify Code: 36815

Register Reset

If you have one USERID, [click here](#) to login



## 6.0.4 Success page

**Register Success**

- Registered success, and system has been sent activation code to your mailbox, please timely activate your account

[click here](#) go to homepage

## 6.0.5 Click this link and active your account

Dear 000000000,

Welcome to use our GPS Tracking System, the following is your account activation address:

[http://www.gpstrackersys.com/en/visit/active.do?user.userId=304&user.name=000000000&code=CACFD204177222A1B41441D67FE9E7FC&request\\_locale=en\\_US](http://www.gpstrackersys.com/en/visit/active.do?user.userId=304&user.name=000000000&code=CACFD204177222A1B41441D67FE9E7FC&request_locale=en_US)

copy address to the browser to open it, the validity of the links is 7 days, can only be used once.

## 6.0.6 Active succeeded

**Register Success**

- Account activation success

[click here](#) go to homepage

## 6.0.7 Login

**GPS Tracking System**

Monitoring   Device   Fence   Alarm   Statistics

[中文版]

\* Login Name :

\* Password :

\* Verify Code :  66070

Login

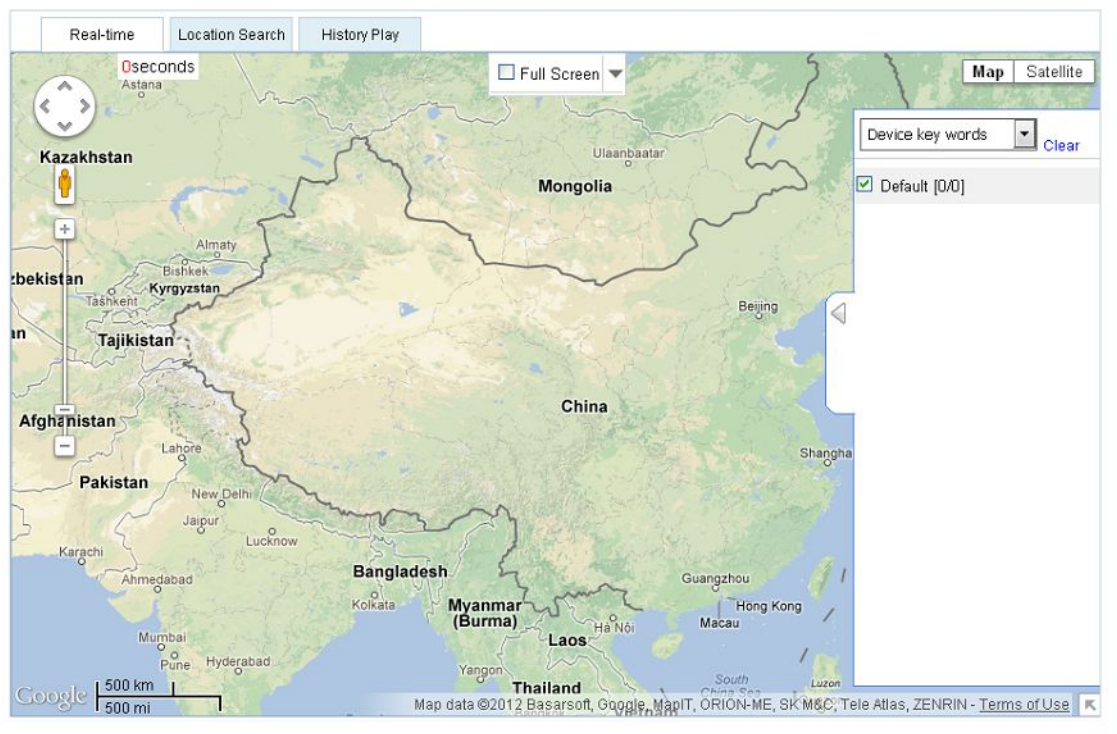
Experience

[Mobile]

Don't you have one USERID? [click here](#)



## 6.0.8 Monitoring Page



## 6.0.9 Device page: input IMEI code and default password(000000)

GPS Tracking System

Hello, user: 000000000 [Logout](#)

Monitoring **Device** Fence Alarm Statistics

**Device Manage**

My Device

**Bind Device**

Category

Device Manage -> Bind Device

Category:

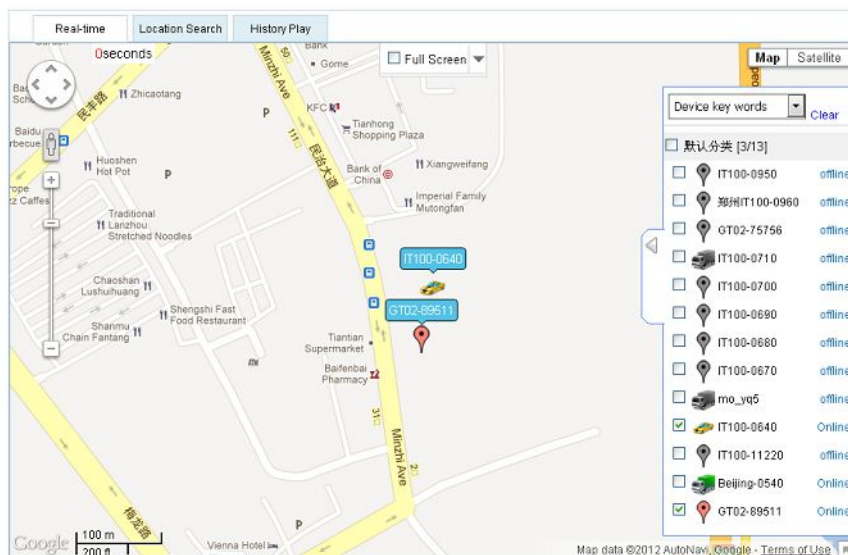
IMEI:  15 digital

Device Password:  Initial password: 000000

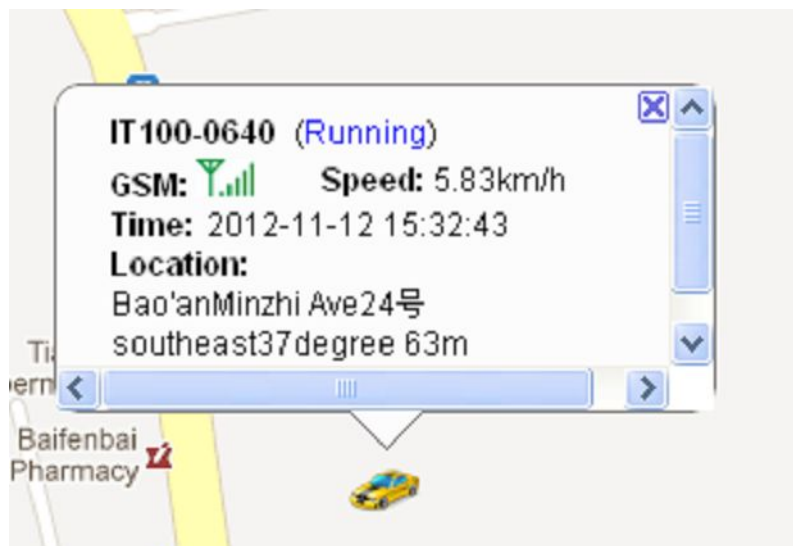
Verify Code:

**Submit**

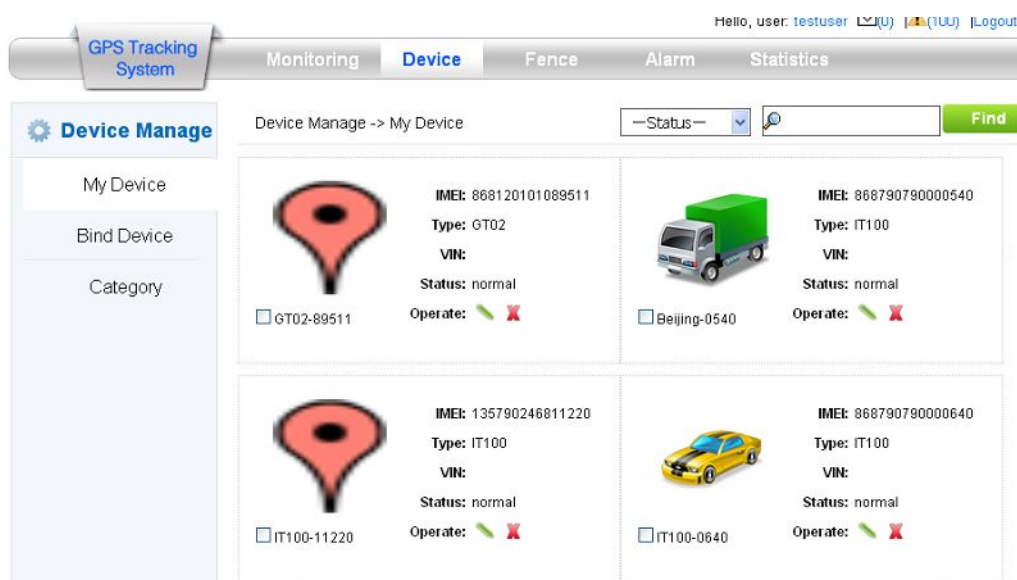
## 6.0.10 Back to the monitoring page



6.0.11 Detail information will be found as below:



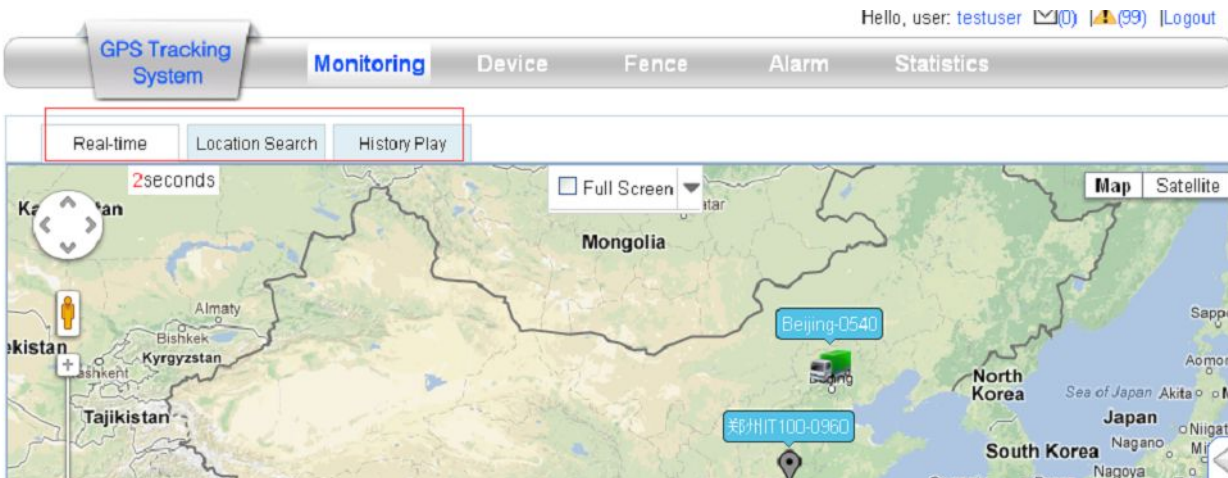
6.0.12 If you have more device, re-bind it from step 9th



6.0.13 You can add more teams if it is needed



6.0.14 Real time tracking, location query and history query fuction



## 7 Cautions

**Please comply with the instructions to extend the unit life:**

1. Keep the unit dry. Any liquid, i.e. rain, moisture, may destroy or damage the inside circuitry.
2. Don't use & store the unit in dusty places.
3. Don't put the unit in overheated or overcooled places.
4. Handle carefully. Don't vibrate or shake it violently.
5. Clear the unit with a piece of dry cloth. Don't clean in chemicals, detergent.
6. Don't paint the unit, this may cause some foreign materials left in between the parts.
7. Don't disassemble or refit the unit.

#### FCC Statement

1. This device complies with Part 15 of the FCC Rules. Operation is subject to the following two conditions:

(1) This device may not cause harmful interference.

(2) This device must accept any interference received, including interference that may cause undesired operation.

2. Changes or modifications not expressly approved by the party responsible for compliance could void the user's authority to operate the equipment.

#### NOTE:

This equipment has been tested and found to comply with the limits for a Class B digital device, pursuant to Part 15 of the FCC Rules.

These limits are designed to provide reasonable protection against harmful interference in a residential installation.

This equipment generates and can radiate radio frequency energy and, if not installed and used in accordance with the instructions, may cause harmful interference to radio communications.

However, there is no guarantee that interference will not occur in a particular installation. If this equipment does cause harmful interference to radio or television reception, which can be determined by turning the equipment off and on, the user is encouraged to try to correct the interference by one or more of the following measures:

Reorient or relocate the receiving antenna.

Increase the separation between the equipment and receiver.

Connect the equipment into an outlet on a circuit different from that to which the receiver is connected.

Consult the dealer or an experienced radio/TV technician for help.

#### SAR Information Statement

Your wireless phone is a radio transmitter and receiver. It is designed and manufactured not to exceed the emission limits for exposure to radiofrequency (RF) energy set by the Federal Communications Commission of the U.S. Government. These limits are part of comprehensive guidelines and establish permitted levels of RF energy for the general population. The guidelines are based on standards that were developed by independent scientific organizations through periodic and thorough evaluation of scientific studies. The standards include a substantial safety margin designed to assure the safety of all persons, regardless of age and health. The exposure standard for wireless mobile phones employs a unit of measurement known as the Specific Absorption Rate, or SAR. The SAR limit set by the FCC is 1.6 W/kg. \* Tests for SAR are conducted with the phone transmitting at its highest certified power level in all tested frequency bands. Although the SAR is determined at the highest certified power level, the actual SAR level of the phone while operating can be well below the maximum value. This is because the phone is designed to operate at multiple power levels so as to use only the power required to reach the network. In general, the closer you are to a wireless base station antenna, the lower the power output. Before a phone model is available for sale to the public, it must be tested and certified to the FCC that it does not exceed the limit established by the government adopted requirement for safe exposure. The tests are performed in positions and locations (e.g., at the ear and worn on the body) as required by the FCC for each model. The highest SAR value for this model phone as described in this user guide, is **1.31W/Kg** (Body-worn measurements differ among phone models, depending upon available accessories and FCC requirements). While there may be differences between the SAR levels of various phones and at various positions, they all meet the government requirement for safe exposure. The FCC has granted an Equipment Authorization for this model phone with all reported SAR levels evaluated as in compliance with the FCC RF exposure guidelines. SAR information on this model phone is on file with the FCC and can be found under the Display Grant section of <http://www.fcc.gov/oet/fccid> after searching on

**FCC ID: 2AAUPGD-300** Additional information on Specific Absorption Rates (SAR)

can be found on the Cellular Telecommunications Industry Association (CTIA) web-site at

<http://www.wow-com.com>. \* In the United States and Canada, the SAR limit for mobile phones used by the public is 1.6 watts/kg (W/kg) averaged over one gram of tissue. The standard incorporates a substantial margin of safety to give additional protection for the public and to account for any variations in measurements.

#### Body-worn Operation

This device was tested for typical body-worn operations. To comply with RF exposure requirements, a minimum separation distance of 10mm must be maintained between the user's body and the handset, including the antenna. Third-party belt-clips, holsters, and similar accessories used by this device should not contain any metallic components. Body-worn accessories that do not meet these requirements may not comply with RF exposure requirements and should be avoided. Use only the supplied or an approved antenna.