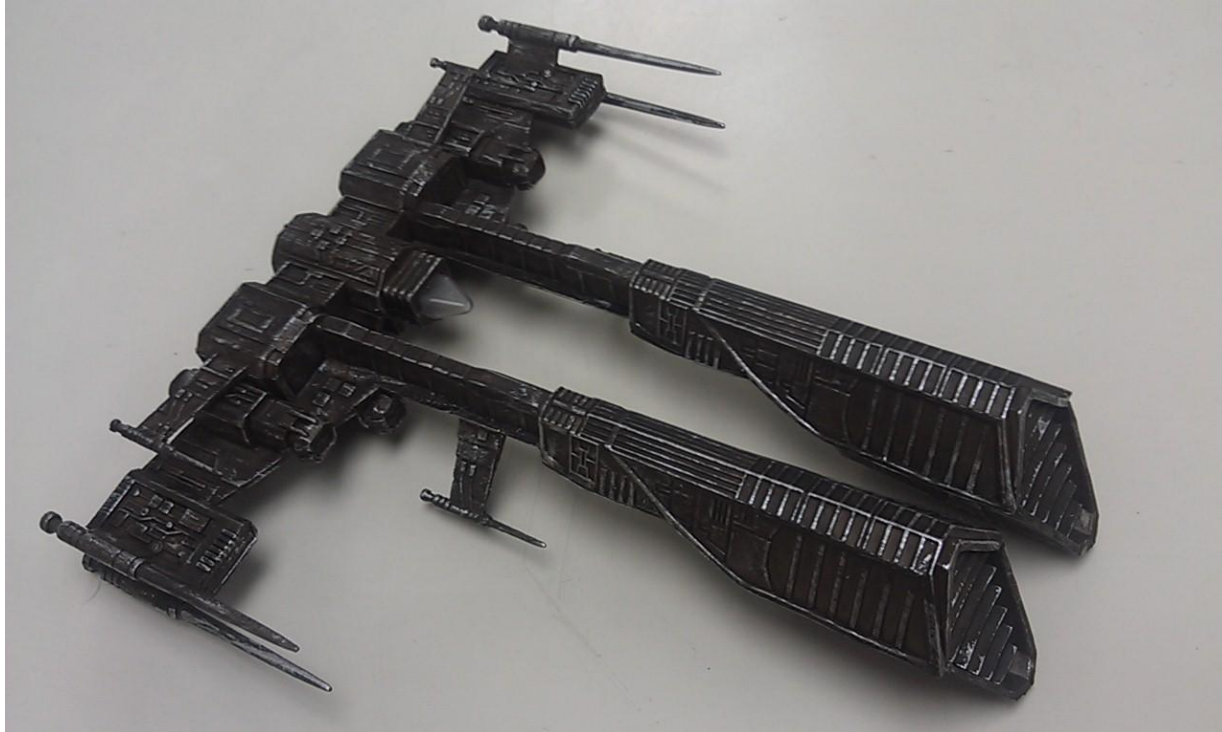


Quick Start Guide for USB 2.0 4 Port Hub



Model : P266

This USB Hub makes the most of your computer and workspace by increasing the number of available USB ports. There has never been a more convenient way to expand your USB capacity.

Table of Contents

Introduction	1
System Requirements	2
Package Contents	2
Specifications	3
Product Overview	4
Installation	6

To enjoy all the features and benefits of this USB Hub, please read and follow all installation and operation instructions completely.

Introduction

USB (Universal Serial Bus) is currently the standard for most computers, notebooks and peripherals. The USB connections allow the user to easily connect multiple devices. The USB 2.0 4 Port Hub (Model : P266) provides additional ports to connect up to 4 USB devices to a single USB port on your computer.

The Quick Start Guide contains easy instructions in order to show you how to set up and start using your USB Hub.

System Requirements

Any PC or Macintosh computer with an available USB port and USB compliant operating system

(*Windows XP, Vista, 7, 8 or Mac OS 9.X or above, etc*)

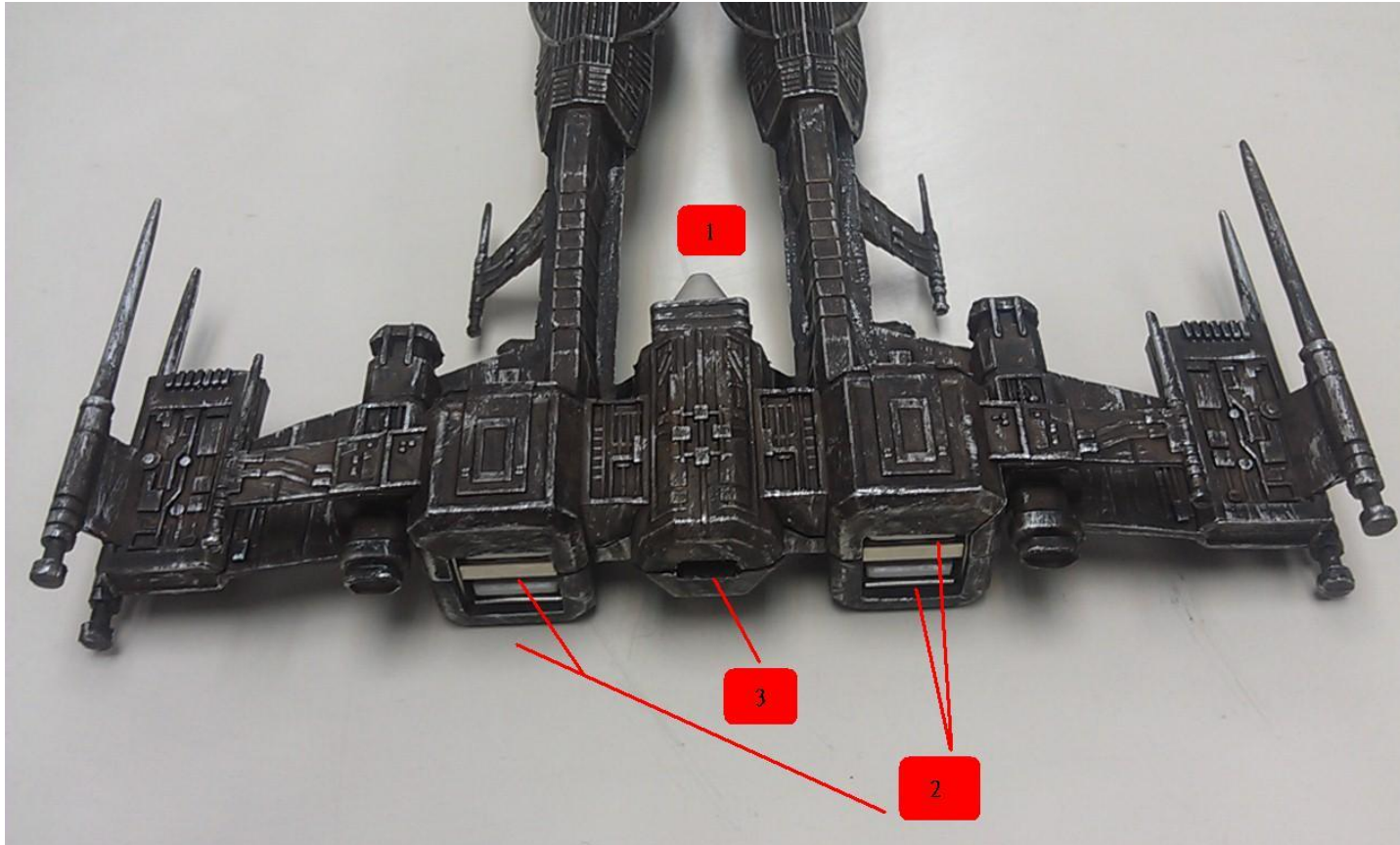
Package Contents

- USB 2.0 4 Port Hub (Model P266)
- 10' USB A – Mini B USB cable

Specifications

Function		Specification
USB Ports	Downstream	1
	Upstream	4
Power LEDs		Orange
Power Mode		Powered from USB Port of PC
Output Voltage (per port)		+5V DC
Output Current (per port)		500mA (max)
Operating Temperature		5°C ~ 40°C
Storage Temperature		- 20°C ~ 60°C
Housing		Plastic

Product Overview



Model: P266

Product Overview – continued

1. Power Indicator - Orange LED will light when USB Hub is plugged into the PC .
2. Downstream Ports - Connect your USB devices to these 4 ports.
3. Root (Upstream) Port - Connect your computer to this port to provide a link between the hub and devices.

Installation

This USB Hub is a plug-and-play device. Your computer will display the Add New Hardware Wizard after connecting the hub to your computer. Installation may be done whether your computer is powered on or off. It is not necessary to restart your computer after installation.

1. Connect the USB A - miniB USB cable (included in this package) to the Upstream port on the USB Hub, then connect the other end of the cable to an unused USB port on your computer.
2. Connect your USB devices to the Downstream ports on the USB Hub.

FCC Caution.

§ 15.19 Labelling requirements.

This device complies with part 15 of the FCC Rules. Operation is subject to the following two conditions: (1)

This device may not cause harmful interference, and (2) this device must accept any interference received, including interference that may cause undesired operation.

§ 15.21 Changes or modification warning

Any Changes or modifications not expressly approved by the party responsible for compliance could void the user's authority to operate the equipment.

§ 15.105 Information to the user.

Note: This equipment has been tested and found to comply with the limits for a Class B digital device, pursuant to part 15 of the FCC Rules. These limits are designed to provide reasonable protection against harmful interference in a residential installation. This equipment generates uses and can radiate radio frequency energy and, if not installed and used in accordance with the instructions, may cause harmful interference to radio communications. However, there is no guarantee that interference will not occur in a particular installation. If this equipment does cause harmful interference to radio or television reception, which can be determined by turning the equipment off and on, the user is encouraged to try to correct the interference by one or more of the following measures:

- Reorient or relocate the receiving antenna.
- Increase the separation between the equipment and receiver.

- Connect the equipment into an outlet on a circuit different from that to which the receiver is connected.
- Consult the dealer or an experienced radio/TV technician for help.