



Certification Exhibit

FCC ID: 2AAUJ-C001

FCC Rule Part: 15.209

TÜV SÜD Project Number: 72126316

Manufacturer: TableSafe, Inc.
Model: TS-CS10

Manual



RAIL User Manual

Date: August 16, 2017

Version: 1.2

Table of Contents

RAIL Introduction	3
Product Features	3
Staff Login	4
Server Tools	5
Manager Utilities	8
Prepare the Check	9
Presenting the RAIL	9
Order Summary	10
Receipt Delivery	14
Survey	15
RAIL LED Indicators	16
Help Menu and Abort Transaction	17
Split by Item Disabled	18
Changes After Check Presentation	19
Split Check on POS	19
Credit Card Errors	20
RAIL Maintenance	21
How to Charge a RAIL	21
Federal Communications Commissions (FCC) Statement	22

RAIL Introduction

The RAIL is a patented, handheld, digital device designed to replicate the look and feel of a traditional bill presentation folder. The RAIL allows guests to securely self-swipe credit cards, auto-calculate tip, split the bill multiple ways, and choose how to have their receipt delivered. It provides additional services to restaurants including surveys, advertising, manager alerts and guest data-related reporting.

Key Features

- Security
- Payment Platform
- Purpose Built
- Transaction Status LEDs

Product Features



*Shock and Spill Resistant

*EMV Chip Reader and Apple & Android Pay – COMING SOON!

Staff Login

Clock in on POS before logging into the RAIL.

When on the Server Login screen, simply input your PIN, or swipe your POS Login Card through the RAIL's MSR.

Below are some issues and resolutions related to logging in:

1. Employee logged in on other terminal

If you are logged in on the POS terminal, you will not be able to log into the RAIL. Log out of the POS and retry on the RAIL.

2. Manager or Employee does not have sufficient access rights to perform the action

This is tied to staff settings in the POS BOH system. Granting or hindering "right to perform the action" will need to be changed on the POS BOH.

Swipe Card or Enter ID		
1	2	3
4	5	6
7	8	9
C	0	⬅ x
Log In		

Server Tools

Once logged in to the RAIL, the server will be presented with the “My Tables” screen, which shows all of the server’s currently open tables from the POS. Servers will be able to select tables from this screen to begin the payment process when the guest is ready to check out.

In the upper right corner of the screen, a gear icon will bring up the Utilities menu. The utilities include:

Servers

- Receipt Printer
- Tip Report
- RAIL Status
- Display Settings

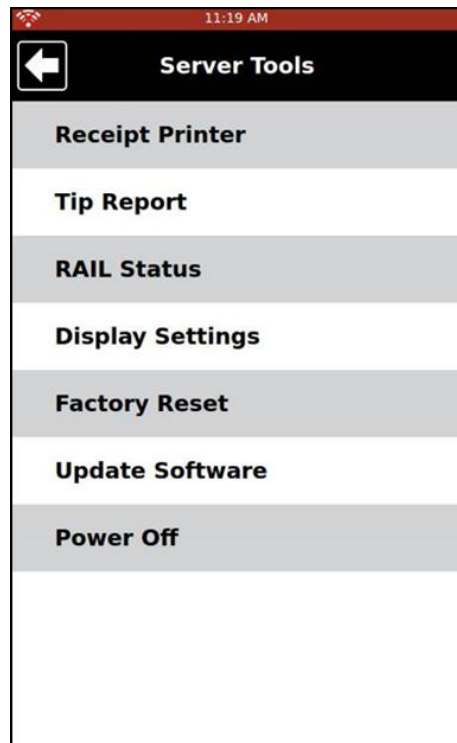
Managers

- Factory Reset
- Update Software
- Power Off
- View All Tables



Table	Total
Table 11/1	\$65.63
Table 12/1	\$173.63
Table 13/1	\$222.77
Table 14/1	\$119.57
Table 15/1	\$504.50
Table 16/1	\$190.01
Table 17/1	\$248.98
Table 18/1	\$109.20

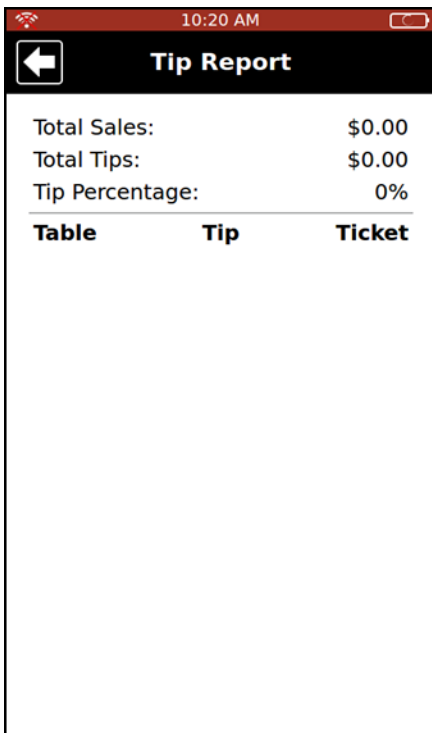
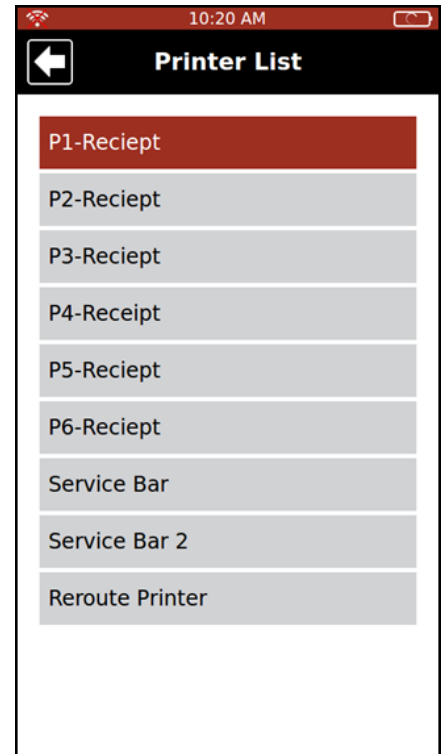
View All Tables



Receipt Printer
Tip Report
RAIL Status
Display Settings
Factory Reset
Update Software
Power Off

Receipt Printer

A receipt printer should be selected at the beginning of each server's shift for whenever a guest selects a printed receipt. Each server may have their own receipt printer location and any RAIL device can be used to designate the location.

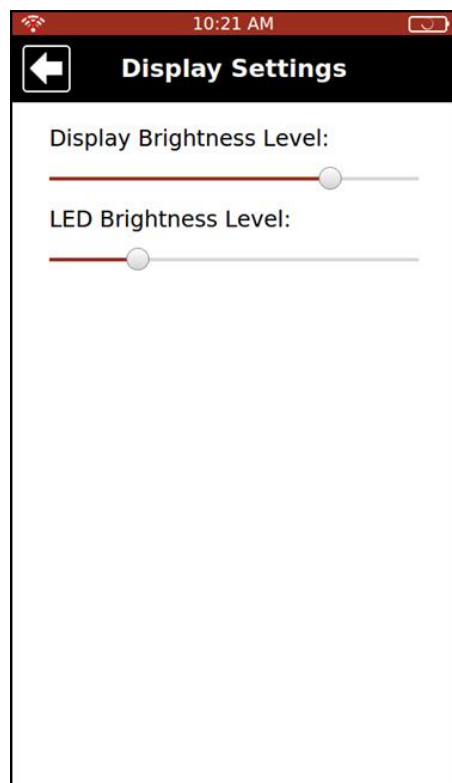
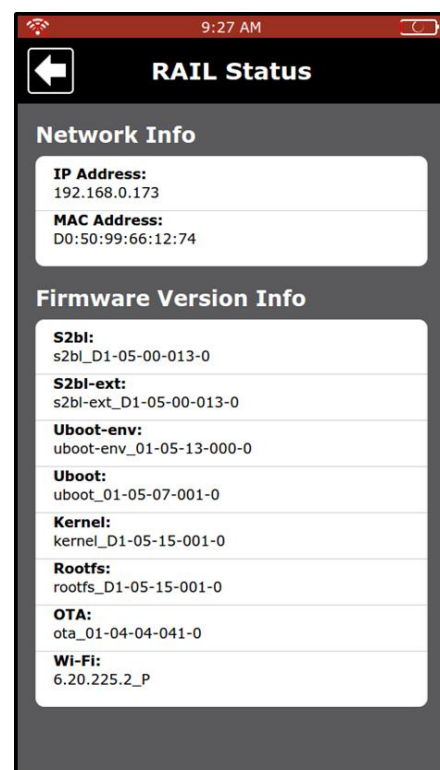


Tip Report

The Tip Report displays all the checks closed on the RAIL with credit and their subtotals, tip amounts, and percentages for that server logged in. Additionally, a summary report will show the server's average tip percentage and total amount of tips received for the shift.

RAIL Status

The RAIL Status displays a RAIL's current software versions and hardware information.



Display Settings

The Display Settings allows a user to modify the RAIL's screen brightness and LED brightness.

Manager Utilities

Managers have the same utilities as servers, plus the following:

Factory Reset

- Restarts the RAIL to factory settings. Factory reset will need to be selected if a new wireless network will be used with the RAIL or new credentials are required to maintain RAIL connectivity

Update Software

- Checks for any available software updates and begins the download of that software when selected

Power Off

- Powers the RAIL down. The RAIL will turn back on once placed into a charging station and will reconnect to last connected network

View All Tables

- If a user is configured with the appropriate permissions, once logged in they will have the ability to view all open tables by selecting the "View All Tables" button

Prepare the Check

Follow the steps below to present the RAIL when the guest is ready to check out.

- Select the table from "My Tables" screen
- Press "Please Click Here and Present to Guest"
- Close cover of folio



10:22 AM	
←	Table 14/1
Bay Shrimp cktl	\$8.00
Bay Shrimp cktl	\$8.00
Bay Shrimp cktl	\$8.00
Crab and S...p Cocktail	\$13.50
Crab and S...p Cocktail	\$13.50
Crab and S...p Cocktail	\$13.50
Crab Cocktail	\$15.00
Crab Cocktail	\$15.00
Crab Cocktail	\$15.00
Total	\$119.57
Click and Present to Guest	

Presenting the RAIL

"This is the RAIL, our secure payment device to protect your credit card information. The screen will guide you through the check out process with options like bill splitting and receipt types. If using a credit card, you will swipe your card here and exit the device at this point. If you have any questions, select the question mark here and I will come by to help."

Gift Cards

- The RAIL currently does not accept gift cards. Prior to presenting, confirm if the guest will pay with a gift card. These will be processed on the POS system. If the gift card only applies a partial payment, use the RAIL device for the remaining balance

Order Summary



When the guest opens the RAIL and presses the "View Check" button, they will be presented with an Order Summary page of their order. From here they will have options to choose from.




- Pay Check
- Split Check


Previous Payments and Discounts

Any previous payments or discounts will be presented as a line item with the subtotal and tax. These will be listed on the Order Summary, Pay by Credit, Pay by Cash, and Transaction Details screens.

Order Summary ?	
Bay Shrimp cktl	\$8.00
Bay Shrimp cktl	\$8.00
Bay Shrimp cktl	\$8.00
Crab and S...p Cocktail	\$13.50
Crab and S...p Cocktail	\$13.50
Crab and S...p Cocktail	\$13.50
Crab Cocktail	\$15.00
Crab Cocktail	\$15.00
Crab Cocktail	\$15.00
Subtotal	\$109.50
Tax	\$10.07
Total	\$119.57
<div>Split Check</div> <div>Pay Check</div>	
 <small>Completing the ultimate dining experience</small>	

Transaction Details														
Subtotal		\$35.45												
Payments		\$-5.00												
Tax		\$3.26												
Total		\$33.71												
Tip Suggestions <table border="1"> <thead> <tr> <th>Percent</th> <th>Tip</th> <th>Total</th> </tr> </thead> <tbody> <tr> <td>10%</td> <td>\$3.87</td> <td>\$37.58</td> </tr> <tr> <td>20%</td> <td>\$7.74</td> <td>\$41.45</td> </tr> <tr> <td>30%</td> <td>\$11.61</td> <td>\$45.32</td> </tr> </tbody> </table>			Percent	Tip	Total	10%	\$3.87	\$37.58	20%	\$7.74	\$41.45	30%	\$11.61	\$45.32
Percent	Tip	Total												
10%	\$3.87	\$37.58												
20%	\$7.74	\$41.45												
30%	\$11.61	\$45.32												
<small>Tip percentage is calculated off of the original ticket value</small>  Please leave your cash in the RAIL. If you need change, place the RAIL on the edge of the table. Thank you.														
<div>Close Transaction</div>														
 <small>Completing the ultimate dining experience</small>														

Add Tip ?	
Subtotal	\$35.45
Payments	\$-5.00
Tip	\$7.74
Tax	\$3.26
Total	\$41.45
<div>20 %  </div>	
<small>Tip percentage is calculated off of the original ticket value</small> <input type="checkbox"/> Round Total to Next Dollar	
<div>Custom Tip</div>	
<div>Continue</div>	
 <small>Completing the ultimate dining experience</small>	

Payment And Receipt													
Subtotal	\$35.45												
Payments	\$-5.00												
Tax	\$3.26												
Total	\$33.71												
Tip Suggestions <table border="1"> <thead> <tr> <th>Percent</th> <th>Tip</th> <th>Total</th> </tr> </thead> <tbody> <tr> <td>10%</td> <td>\$3.87</td> <td>\$37.58</td> </tr> <tr> <td>20%</td> <td>\$7.74</td> <td>\$41.45</td> </tr> <tr> <td>30%</td> <td>\$11.61</td> <td>\$45.32</td> </tr> </tbody> </table>		Percent	Tip	Total	10%	\$3.87	\$37.58	20%	\$7.74	\$41.45	30%	\$11.61	\$45.32
Percent	Tip	Total											
10%	\$3.87	\$37.58											
20%	\$7.74	\$41.45											
30%	\$11.61	\$45.32											
<small>Tip percentage is calculated off of the original ticket value</small>													
<div>No Receipt</div> <div>Print Receipt</div>													
<div>Email Receipt</div>													
 <small>Completing the ultimate dining experience</small>													

Split Check

There are three options for the guest to choose from under Split Check.

- Split Equally
- Split by Item
- Split by Amount

Split Equally

The guest can select to divide the check equally up to 9 ways. Once the payment and survey participation are complete for a guest, a screen will alert them to pass the RAIL to the next guest.

Split by Item

The guest can select what items to include on their ticket for payment. Once the payment and survey participation are complete for a guest, a screen will alert them to pass the RAIL to the next guest. The next guest will see the remaining items left to be paid.


Split by Amount

The guest can input a specific amount to pay. Once the payment and survey participation is done for a guest, a screen will alert them to pass the RAIL to the next guest. The next guest will then see the remaining balance to be paid.

Split Check	
Equally	By Item
Pepsi	\$2.75
Iced Tea	\$2.95
Orange Crush	\$2.50
Bowl Chowder	\$6.50
3 course Special Salmon	\$29.00
NY Style Cheese Cake	\$6.50
Food & Bev	\$5.45
<input type="checkbox"/> Select All	

Continue

TableSafe
Completing the ultimate dining experience

Split Check	
Equally	By Item
Total	\$55.92
 x 2	
Each Pays	\$27.96

Continue

TableSafe
Completing the ultimate dining experience

Split Check	
Equally	By Item
Previous Split Payments	\$0.00
Remaining Balance	\$55.92
You Pay	\$0.00
Amount Pre Tip \$	0.00
1	2
4	5
7	8
C	0

Continue

TableSafe
Completing the ultimate dining experience

Payment Options

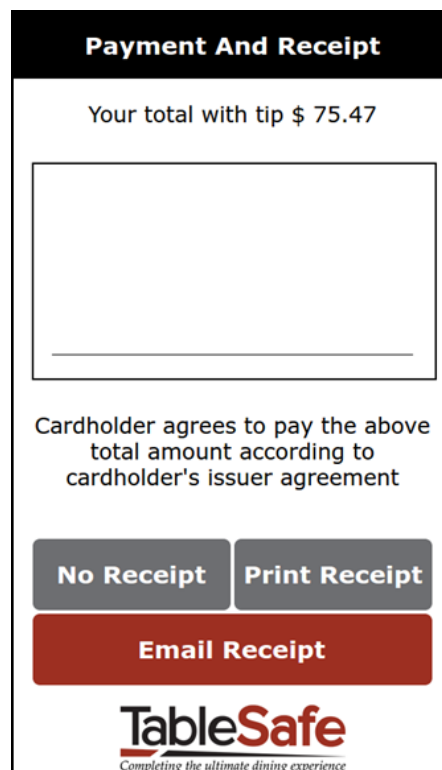
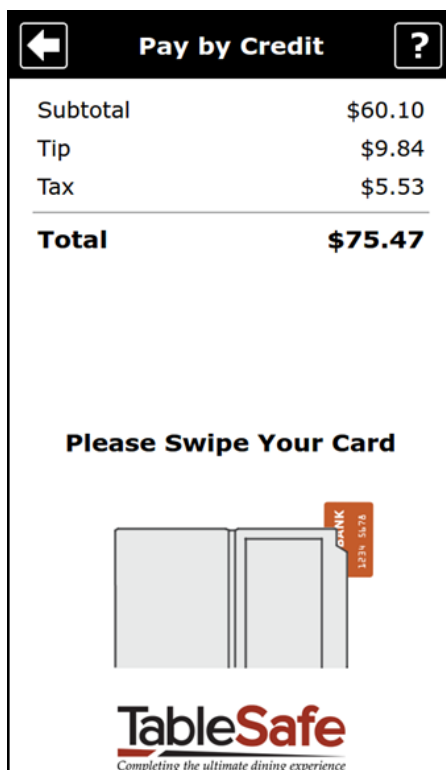
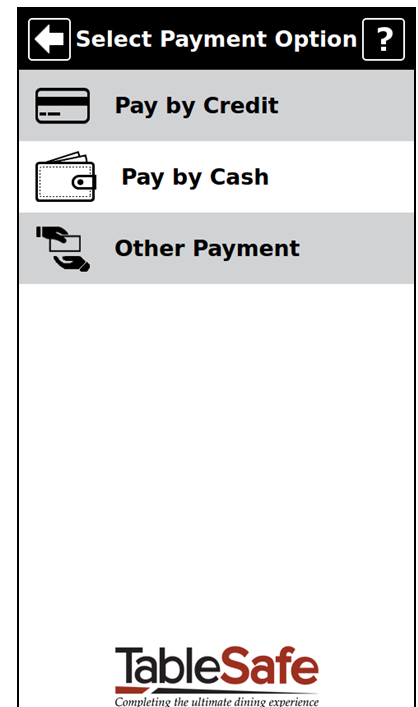
The guest will be prompted with the same “Pay Check” button regardless of whether they are a single payer or splitting the check. They will then be prompted with the following three choices:

- Pay by Credit
- Pay by Cash
- Other Payment

Pay by Credit

The guest will be prompted with a tip amount. They can increase or decrease it to the desired amount or enter in a custom tip, as well as round the total to the nearest dollar. Once they have decided a tip amount, they will be prompted to swipe their card.

When the card has been approved, the guest will sign their name to authorize the payment with their finger.



Pay by Cash

The guest will confirm the total of the check and select a receipt option. Suggested tip amounts will be provided on the Receipt Option and Transaction Details screens.

Payment And Receipt

Subtotal	\$109.50
Tax	\$10.07
Total	\$119.57

Tip Suggestion on Cash Balance		
Percent	Tip	Total
10%	\$11.96	\$131.53
20%	\$23.91	\$143.48
30%	\$35.87	\$155.44

No Receipt

Print Receipt

Email Receipt

Transaction Details

Total	\$119.57
--------------	-----------------

Tip Suggestion		
Percent	Tip	Total
10%	\$11.96	\$131.53
20%	\$23.91	\$143.48
30%	\$35.87	\$155.44

Please leave your cash in the RAIL. If you need change, place the RAIL on the edge of the table.
Thank you.

Close Transaction

Pay by Other

Subtotal	\$109.50
Tax	\$10.07
Total	\$119.57

Your server has been alerted to help. Please place payment in RAIL.
Thank you.

Close Transaction

Other Payment

The "Other Payment" option will be used when a guest is using a gift card or rewards card. The RAIL will alert the server to come to the table so they can process the payment on the POS terminal.

Receipt Delivery

Whether the guest pays by credit or cash, they will be prompted with a choice for how they want their receipt delivered.

Email Receipt

- The guest will be prompted to enter their email address for the receipt to be sent to. From here, they will also have the option to have their receipt emailed and printed

Print Receipt

- The server will deliver a printed receipt

No Receipt

- A receipt will not be delivered to the guest

The screenshot shows a mobile application interface for receipt delivery. At the top, there is an 'Email:' label followed by a text input field containing the letter 'k'. Below the input field is a list of email domain suggestions: @gmail.com, @yahoo.com, @hotmail.com, @aol.com, @msn.com, @comcast.net, and @live.com. Below these suggestions is a virtual QWERTY keyboard with navigation arrows at the top. Under the keyboard is a blue link labeled 'Privacy Policy'. At the bottom of the form are three buttons: a large red 'Send' button, and two grey buttons labeled 'Print & Send' and 'No Receipt'. The TableSafe logo is at the very bottom, with the tagline 'Completing the ultimate dining experience'.

Survey

After selecting the receipt delivery option, the guest will be presented with a short survey of three questions. The first screen will have one question, and the second screen will have the final two.

The guest can choose to not answer the questions by pressing the "No Thanks" button.

After the survey, the guest will finalize their payment.

Rate the Rail's performance

Didn't notice

Slow

OK

Fast

No Thanks

TableSafe
Completing the ultimate dining experience

←

How would you rate the Rail user experience?

Fair

Excellent

Good

Poor

Test Quesiton 3

Delta

Bravo

Alpha

Charlie

No Thanks Submit

TableSafe
Completing the ultimate dining experience

Thank You

*We hope you enjoyed the
streamlined payment process and
increased level of security,
brought to you by*

TableSafe
Completing the ultimate dining experience

Log In

RAIL LED Indicators

Solid Green

- Successful credit card transaction with no printed receipt

Flashing Green

- Successful cash transaction with no printed receipt; restaurant staff will need to collect the cash from the RAIL and process at the POS according to current restaurant operating procedures

Solid Blue

- Successful credit card or cash transaction and a printed receipt was requested; restaurant staff will need to retrieve the printed receipt from the designated receipt printer location and verify whether or not cash was used for payment

Solid Red

- Indicates an error has occurred on the RAIL or assistance was requested by the guest; restaurant staff should check with the guest and provide assistance if needed

Flashing Blue

- When customers are prompted to swipe their credit card, and when the RAIL is setting up

Multi-Color

- RAIL's safety feature has been triggered making it inoperable. The top LED is red and the screen is dark and unresponsive

Help Menu and Abort Transaction

If in need of assistance, the guest can select the "?" button. The red LED light will display.

If the guest's question is answered, the server will select the "X" button and allow the guest to continue processing their payment on the RAIL.

If an error to the bill needs to be rectified, the server will select "Wait Staff Functions," enter their PIN, then select "Abort Transaction".

- The server will either correct the error and re-present the RAIL to the guest or process the guest's payment at the POS system

Order Summary		?
Bay Shrimp cktl	\$8.00	
Bay Shrimp cktl	\$8.00	
Bay Shrimp cktl	\$8.00	
Crab and S...p Cocktail	\$13.50	
Crab and S...p Cocktail	\$13.50	
Crab and S...p Cocktail	\$13.50	
Crab Cocktail	\$15.00	
Crab Cocktail	\$15.00	
Crab Cocktail	\$15.00	
Subtotal		\$109.50
Tax		\$10.07
Total		\$119.57
Split Check		Pay Check
TableSafe <small>Completing the ultimate dining experience</small>		

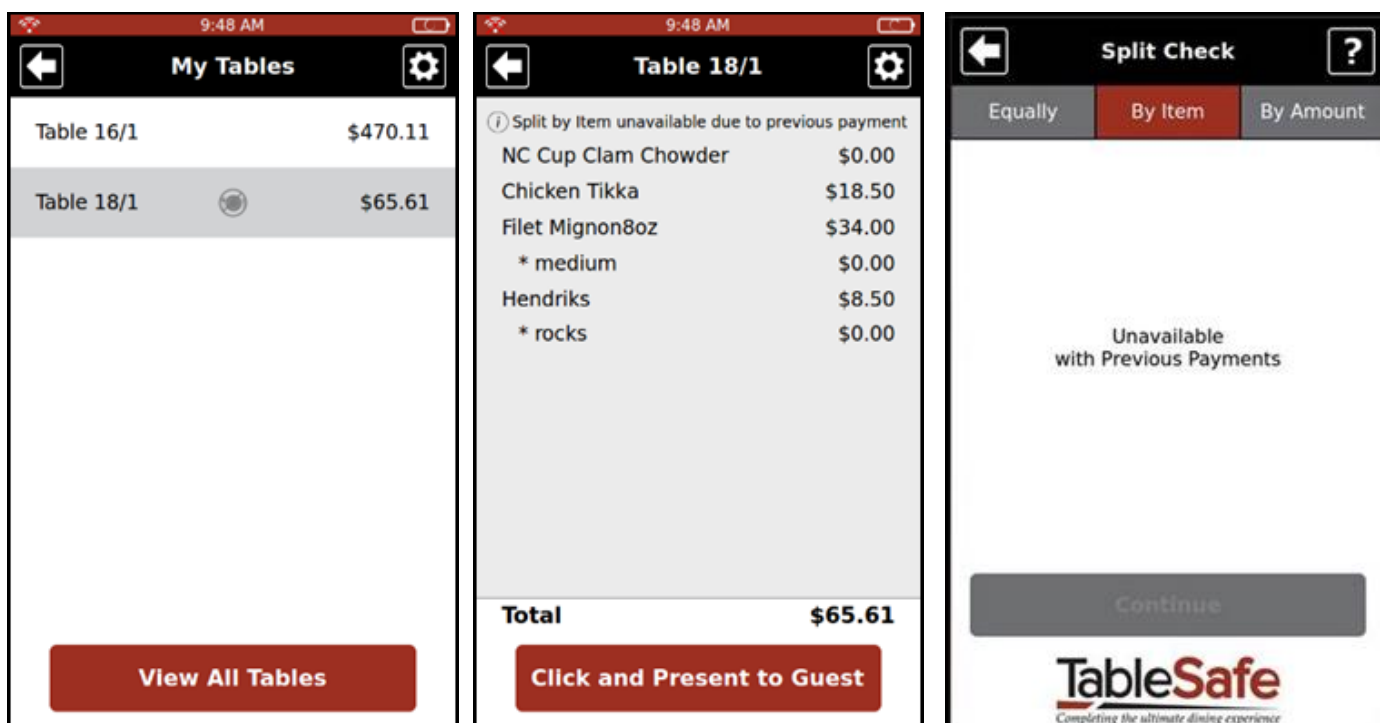


Split by Item Disabled

The "Split by Item" option may be disabled in several scenarios:

- A payment has already been applied to the check via the POS or RAIL
- A discount has been applied to the check
- An item has been split or "shared" among guests on a ticket on the POS
- Menu items have been transferred to or from another check on the POS

In these cases, a ticket will have a "Split by Item" disabled icon next to the name of the table. If the guest tries to split the check on the RAIL, they will see an "Unavailable" message. The "Split Equally" and "Split by Amount" options will still be available for guests electing to split the check in these scenarios.



Changes After Check Presentation

Menu items can easily be added to the check if the guest wants to order more, or taken away if there is an error with the check. The server would need to:

1. Reacquire the RAIL from the guest
2. Select the "Help" menu in the upper right-hand corner of the RAIL if not already pressed
3. Select the "Wait Staff Functions" option
4. Enter server PIN and select the "Abort Transaction" button

The server will be routed to their "My Tables" page, where they can verify all menu items are added to the check in the POS, and then re-present the RAIL to the guest.

Split Check on POS

Multiple RAILS cannot be used for one ticket; the ticket must be split ahead of time on the POS and individual checks presented on individual RAILS. The server will need to:

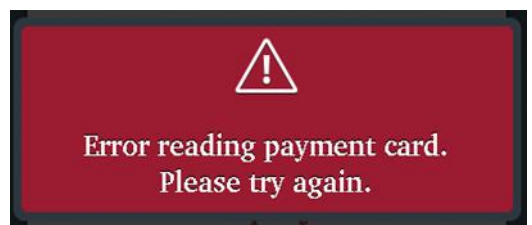
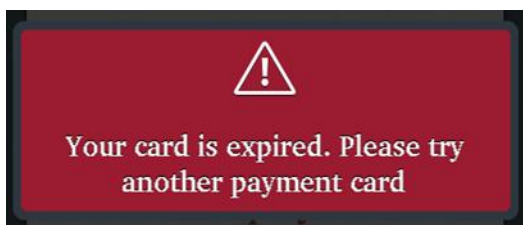
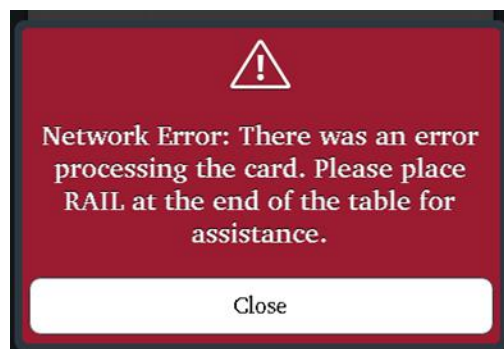
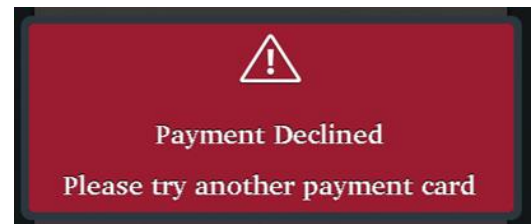
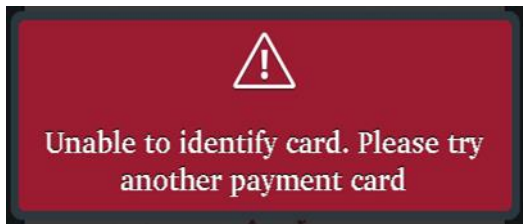
- Confirm if any guests are paying with cash and close those amounts in the POS ahead of time
 - This will leave only guests paying with a card on the RAIL
- This option should only be used in large group settings (more than 9 paying guests at a table)
 - The RAIL can split equally up to nine guests; there are an unlimited amount of payers when "Split by Item" and "Split by Amount" are selected on the RAIL

Credit Card Errors

There are a few reasons why the RAIL will decline a guest's card include:

- Credit card may not be valid
- Funds are insufficient
- Credit card cannot be read
- Credit card was poorly swiped

Ensure the card is a valid credit card and not damaged. The guest may need to provide another card, or you can try to run the card through the POS terminal.



RAIL Maintenance

A daily wipe-down with a warm, damp towel will minimize wear and keep the RAIL clean. Additionally, when not being used, it should be stored in a charging station.

If the RAIL seems to be running slow, place it in the reset tool along the back cover's left edge for three seconds or until the screen goes dark. It will take about 4 minutes to reboot.

Staff should inspect the RAIL for signs of tampering. If physical damage is done to the device, the device will erase its software. The action of erasing its software is described as tampering. A tampered device will be unusable and have to be replaced. All three of the RAIL's LED lights will be lit, with the top color being red. Signs of physical tampering could include, but are not limited to:

- Cracked or broken case
- Hole(s) in case
- Loose or damaged screen or keypad
- Exposed wires or missing screws
- Additional stickers/labels that may be masking other damage

If a device has tampered, alert a manager and pull the RAIL from circulation. The manager will need to contact TableSafe Support to have the RAIL replaced.

How to Charge a RAIL

1. Slide the RAIL with the cover on, screen up, EMV chip reader out into a pod. Ideally this will be done when the RAIL is not in use.
2. The RAIL should begin to charge within 10 seconds. You will know that the RAIL is charging when the light on the pod blinks green.
3. If the light does not blink green, proceed to make slight adjustments to the RAIL's position.

A RAIL takes about 3 to 4 hours to fully charge and will last between 6 to 8 hours on a full charge.

The RAIL may continue to blink after 3 to 4 hours. This is because once the RAIL is fully charged, it will power down to 90% and then begin to recharge.



Federal Communications Commissions (FCC) Statement

FCC Warning: Changes or modifications to any of these devices not expressly approved by TableSafe could void the user's authority to operate the equipment.

1. RAIL Payment Platform

NOTE: This equipment has been tested and found to comply with the limits for a Class A digital device, pursuant to part 15 of the FCC rules. These limits are designed to provide reasonable protection against harmful interference when the equipment is operated in a commercial environment. This equipment generates, uses, and can radiate radio frequency energy and, if not installed and used in accordance with the instruction manual, may cause harmful interference to radio communications. Operation of this equipment in a residential area is likely to cause harmful interference in which case the user will be required to correct the interference at his own expense.

This equipment complies with radiation exposure limits set forth for an uncontrolled environment. This equipment is in direct contact with the body of the user under normal operating conditions. This transmitter must not be co-located or operating in conjunction with any other antenna or transmitter.

THIS DEVICE COMPLIES WITH PART 15 OF THE FCC RULES. OPERATION IS SUBJECT TO THE FOLLOWING TWO CONDITIONS.

(1) THIS DEVICE MAY NOT CAUSE HARMFUL INTERFERENCE, AND (2) THIS DEVICE MUST ACCEPT ANY INTERFERENCE RECEIVED, INCLUDING INTERFERENCE THAT MAY CAUSE UNDESIRE OPERATION.

2. Charging Station: TS-CS5, TS-CS10

NOTE: This equipment has been tested and found to comply with the limits for a Class A digital device, pursuant to part 15 of the FCC rules. These limits are designed to provide reasonable protection against harmful interference when the equipment is operated in a commercial environment. This equipment generates, uses, and can radiate radio frequency energy and, if not installed and used in accordance with the instruction manual, may cause harmful interference to radio communications. Operation of this equipment in a residential area is likely to cause harmful interference in which case the user will be required to correct the interference at his own expense.

This equipment complies with radiation exposure limits set forth for an uncontrolled environment. This equipment should be installed and operated with minimum distance 20 cm between the radiator and your body. This transmitter must not be co-located or operating in conjunction with any other antenna or transmitter.