

Contents

1.	FCC STATEMENT.....	2
2.	Product Description.....	3
3.	Features.....	3
4.	Product Specifications	4
5.	Hardware Installation	6
6.	ONfinity FreeBoard Introduction.....	8
7.	Software Installation.....	8
8.	ONfinity FreeBoard Activation	10
9.	Software Trial and Registration	11
10.	Calibration.....	13
11.	Operating mode	15
12.	Interface Introduction	15
13.	Drawing tool	18
14.	Tagging tool	24
15.	Measuring tool	25
16.	Functions	26
17.	Formula.....	26
18.	Sound	27
19.	Link	27
20.	Page Operation.....	28
21.	Edit Objects	30
22.	Insert objects into Microsoft Office.....	31
23.	Resource Operation	31
24.	Pen command recognition	32
25.	Other Tools	32
26.	Record/Play.....	36
27.	File Operation.....	37
28.	Custom floating tool bar.....	40
29.	The operation of Primary and Secondary E-pen	40

1. FCC STATEMENT

1. This device complies with Part 15 of the FCC Rules. Operation is subject to the following two conditions:
 - (1) This device may not cause harmful interference.
 - (2) This device must accept any interference received, including interference that may cause undesired operation.
2. Changes or modifications not expressly approved by the party responsible for compliance could void the user's authority to operate the equipment.

NOTE: This equipment has been tested and found to comply with the limits for a Class B digital device, pursuant to Part 15 of the FCC Rules. These limits are designed to provide reasonable protection against harmful interference in a residential installation.

This equipment generates uses and can radiate radio frequency energy and, if not installed and used in accordance with the instructions, may cause harmful interference to radio communications. However, there is no guarantee that interference will not occur in a particular installation. If this equipment does cause harmful interference to radio or television reception, which can be determined by turning the equipment off and on, the user is encouraged to try to correct the interference by one or more of the following measures:

- Reorient or relocate the receiving antenna.
- Increase the separation between the equipment and receiver.
- Connect the equipment into an outlet on a circuit different from that to which the receiver is connected.
- Consult the dealer or an experienced radio/TV technician for help



2. Product Description

ONfinity CM2 PRO is the latest portable interactive whiteboard system which the signal receiver can be fixed to the projector. Calibration only need to be carry out once during the initial setup.

This product is mainly used in teaching, meetings or presentation, can transform any large-screen or projection surface into an interactive whiteboard. The system has real-time annotation, free writing, the immediate preservation, use it to fully meet the teachers and students, impromptu speaker, inspiring, creative expression needs. Lectures or speakers on the rostrum using Stylus E-pen to control the display and operating computers, and also at any time on the screen with annotation, drawing a line to express ideas, enhanced interactivity, so you can greatly improve the lectures and conference efficiency. The ONfinity CM2 PRO is a new type of e-learning and conference presentations, interactive system.

3. Features

1. Support real dual pen – allow simultaneous overlapped writing.
2. Image viewing function enable precise positioning.
3. Auto-calibration makes calibration process more easily and quickly.
4. Ultra-strong resistance to ambient light interference.
5. Rechargeable E-Pen with low power consumption for prolonged usage.

4. Product Specifications

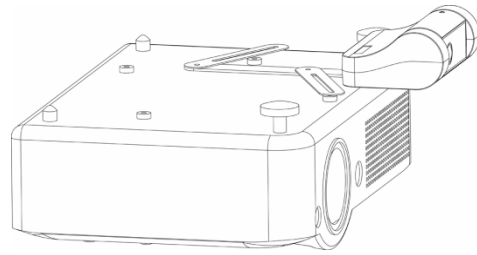
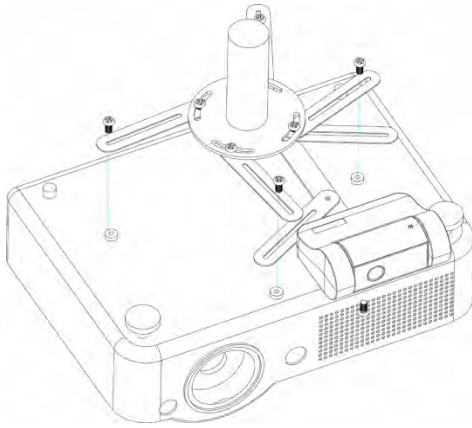
CM2 PRO Receiver	
Position Detection Technology	Infrared
Multi-pen support	Real dual-pen system
Multi-pen technology	TDMP technology
Calibrate method	Automatic calibration / Manual calibration
Auto calibrate technology	Filter switch and image reversion
Wavelength	Pen tip: 850nm / Synchronize: 940nm
Horizontal Reception Angle	85°±2°
Recommend screen-receiver distance	Screen Width *0.6 (About 1m for 80" screen, Aspect Ratio 4:3)
Positioning method	Image view
Response Time	Less than 25ms
Position precision	±1 Pixel
Maximum Area	120 inch diagonal
Communication	USB HID
Input voltage	DC4.5~5.5V
Power Consumption	Less than 0.5W(computer system dependent)
Installation mode	Projector mounting or ceiling mounting
Working temperature	0℃~50℃
Transport /storage temperature	-20℃~80℃
Working humidity	20%~80%

	Primary Rechargeable E-pen	Secondary Rechargeable E-pen
Pen tip light emission	850nm Infrared	850nm Infrared
Tip trigger mode	All-directional pressure trigger	All-directional pressure trigger
Lateral trigger sensitivity	< 35g	< 35g
Key press	Single	none
Power supply	Super capacitor	Super capacitor
Charging method	USB charging	USB charging
Voltage range	4.5V~5.5V	4.5V~5.5V
Charging time	<3 minutes	<3 minutes
Use time after a single charging	Normal use for 10 hours	Normal use for 10 hours
Number of charging cycles	100 000	100 000
Charge holding time	72 hours undetermined	72 hours undetermined
Dimension	18 X160(mm)	18 X135(mm)
Weight	35g	24g

System Requirements	
Operating system	Microsoft Windows XP/Vista/7/8, Mac OS X,
Processor	1GHz or above
Memory size	512 MB or above
Minimum hard disk space	100 MB or above

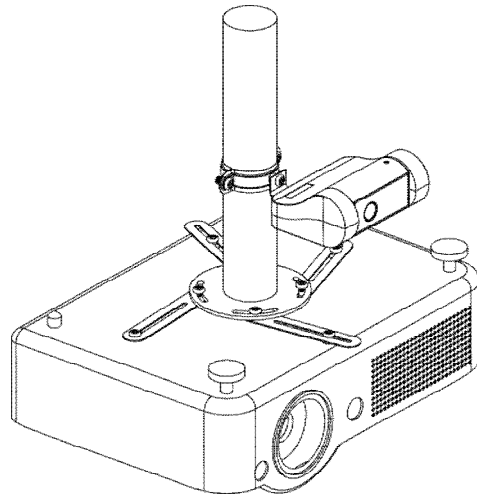
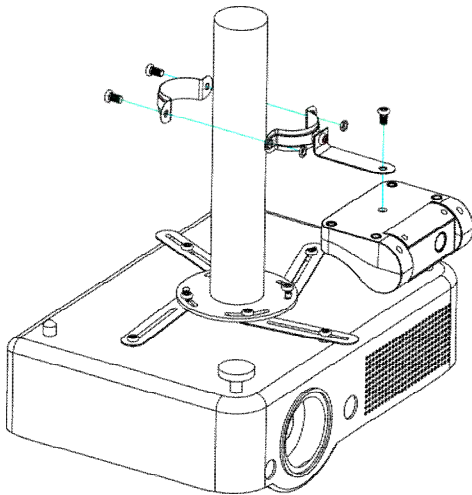
5. Hardware Installation

Installation of Signal Receiver (projector mount).



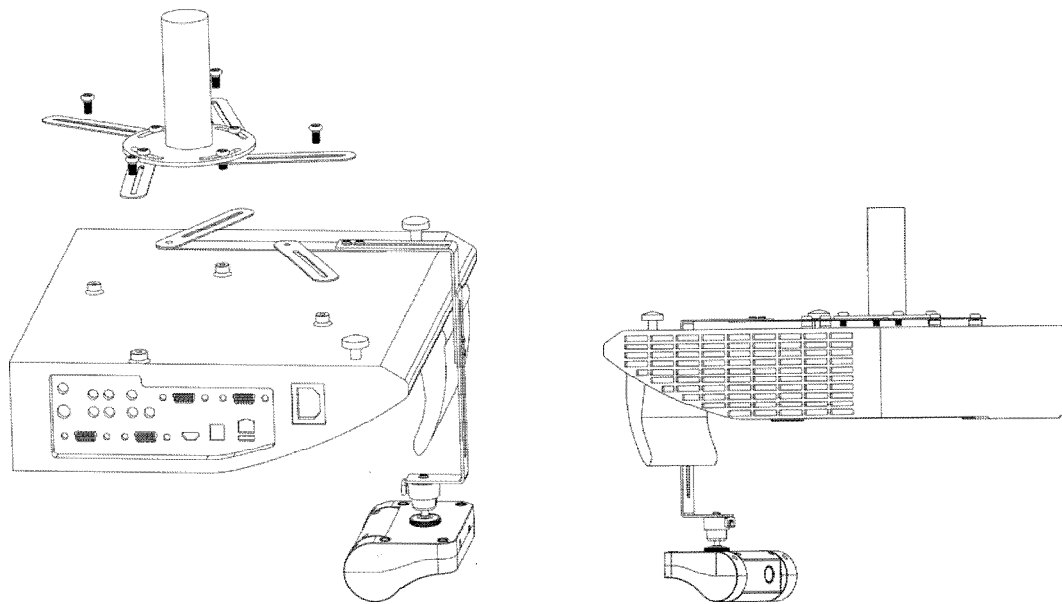
Installation complete.

Installation of Signal Receiver (projector rod).



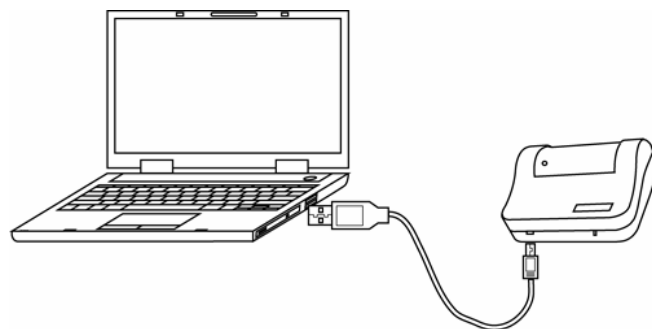
Installation complete.

Installation of Signal Receiver (mirror projector mount).



Installation complete.

Device connection



6. ONfinity FreeBoard Introduction

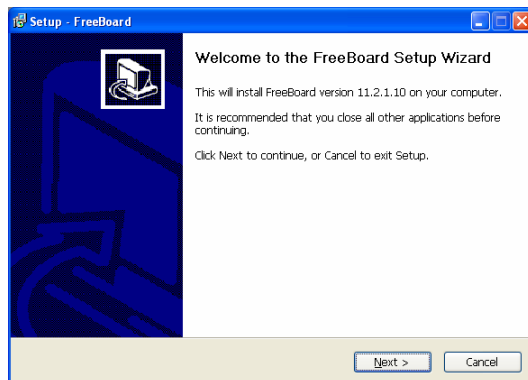
The ONfinity FreeBoard application is a whiteboard program, which text and graphics annotation can be done on top of any slide, documents, reports without affecting the original file.

The ONfinity FreeBoard application brings superb interactivity to the ONfinity Interactive Whiteboard System by performing various versatile functions under Interactive mode, Annotation mode and Whiteboard mode.

All three working modes provide various accessory tools such as screen shade, spotlight ... etc., to enable users conveniently highlight key points or annotations, making teaching much more interactive.

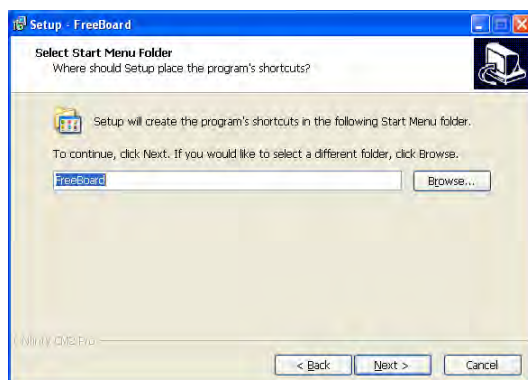
7. Software Installation

Insert the FreeBoard driver CD-ROM into the computer's CD drive. The following window will appear automatically (picture 1- 5). If the CD does not automatically play, double click the 'Setup' file from the CD drive directory for manual installation.



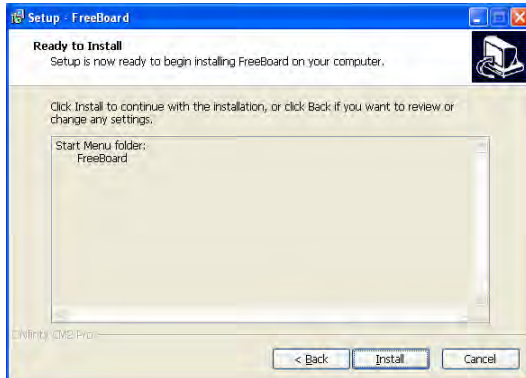
picture 1

Click 'Next' to continue the installation.



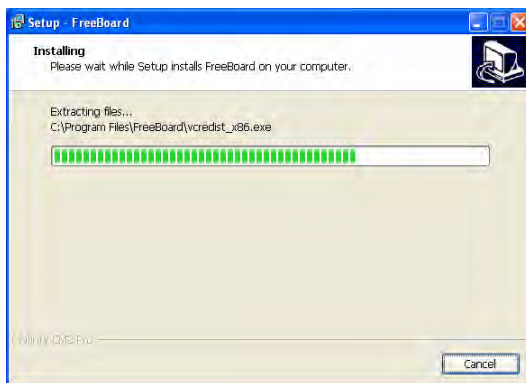
picture 2

If you would like to select a different folder, click 'Browse'. If not click 'Next' to continue.



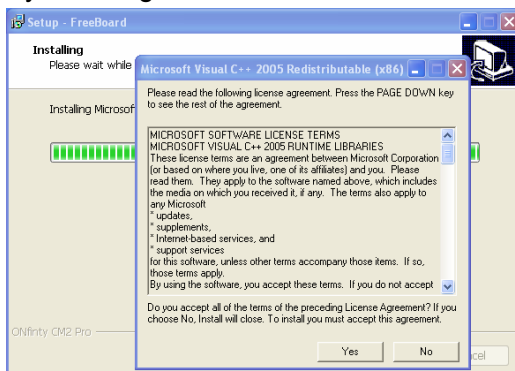
picture 3

Click 'Install' to start the installation process.



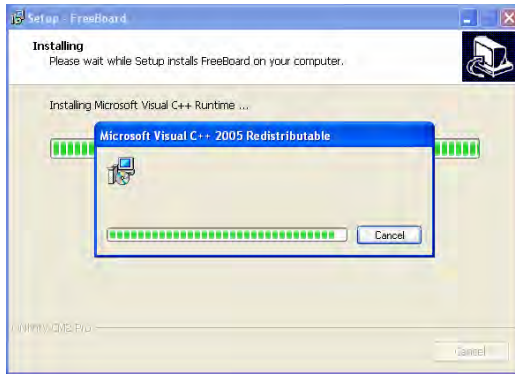
picture 4

System begin installation.

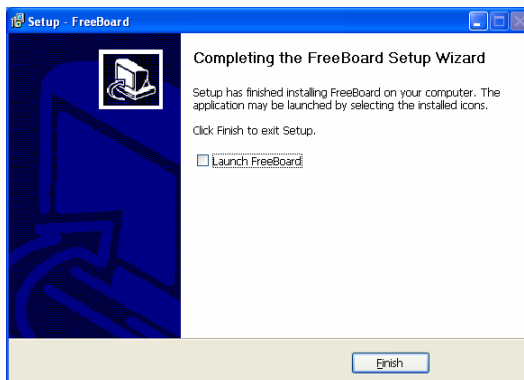


picture 5

'Microsoft Visual C++ 2005 Redistributable' will be installed automatically if it's not installed on the computer.



picture 6




picture 7

Click 'Finish' to complete the installation of the application program procedure.

8. ONfinity FreeBoard Activation

ONfinity FreeBoard can be activate by simply click on the 'FreeBoard' icon on the PC's desktop or Click on menu 'Start' → 'All Programs' → 'FreeBorad's folder' → 'FreeBoard'.

To exit the ONfinity FreeBoard, simply click or right click on the icon  in the system tray then choose "Exit" to exit ONfinity FreeBoard.

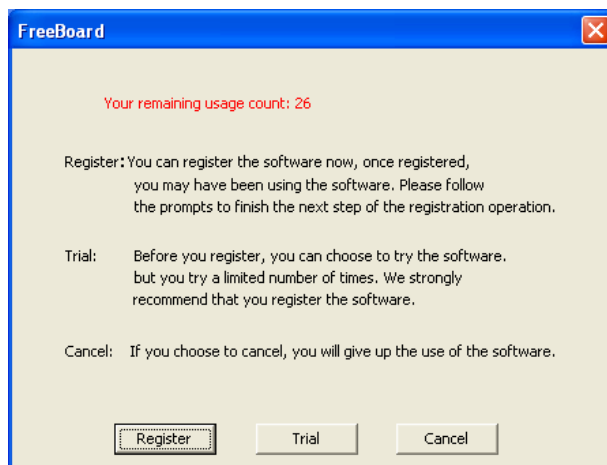
9. Software Trial and Registration

During activation, ONfinity FreeBoard will run automatically when the receiver was connected with the computer and there are no limitations on any of the functions available to FreeBoard. If the receiver was not connected with the computer during activation, a dialogue box will prompt and provide with two options: "Trail" and "Register".

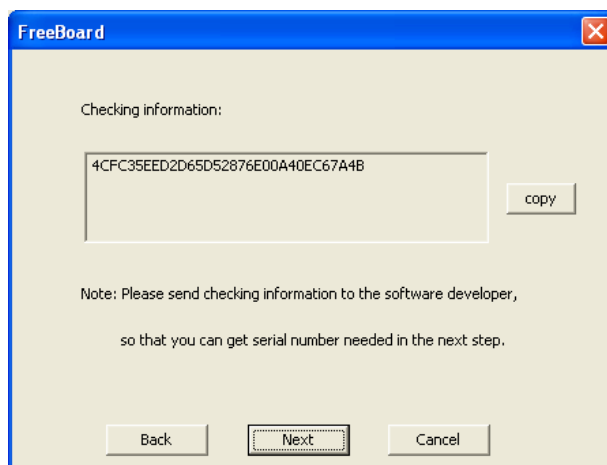
If you want to use FreeBoard to prepare teaching material away from the ONfinity CM2 Pro, please choose 'Register' to registerat yours software.

Otherwise choose 'Trial', where you got a 30 times trails of the FreeBoard software after installation. You can also register your use of the FreeBoard software after the trial. Simply following the below information :-

Follow the system prompts to carry on registration.



Click "Register" button to enter the registration page.



Copy the verify information and send the verify information to the following email address for verification :-

sales@ontecgroup.com

After verification, a serial number will be provided. Then fill in the below information for registration.




A screenshot of a Windows-style dialog box titled "FreeBoard". The dialog has a blue title bar with a red close button in the top right corner. The main area is light yellow and contains the text "Please enter:" followed by three input fields. The first field is labeled "User name:", the second "Company name:", and the third "Serial number:". At the bottom of the dialog, there are three buttons: "Back", "Register" (which is highlighted with a black border), and "Cancel".

10. Calibration

Position calibration is necessary for the first use of CM2 PRO or when calibration is not accurate in subsequent use.

FreeView function.

A visual screen which displays the detectable area of the receiver.


Click or right click the system tray on the  icon . On the pop-up menu, click "Screen View" to display the detectable area of the receiver as shown below:-

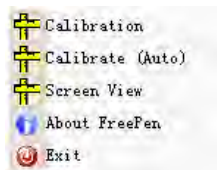


the receiver will continuously showing the projection image as shown above. Adjust the distance between the receiver and the screen, also adjust the receiver's angle of elevation to make sure the projection image which shown by receiver can all be covered in the black area.

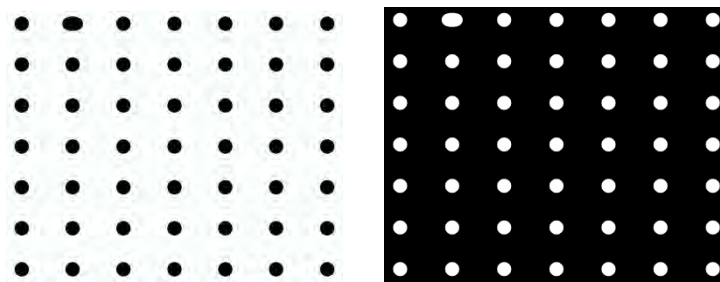
Click "exit" to exit and get ready for Calibration.

Auto Calibration (FreeCal)

Click or right click the system tray on the  icon . On the pop-up menu - Click "Calibrate (Auto)" to activate Auto Calibration.




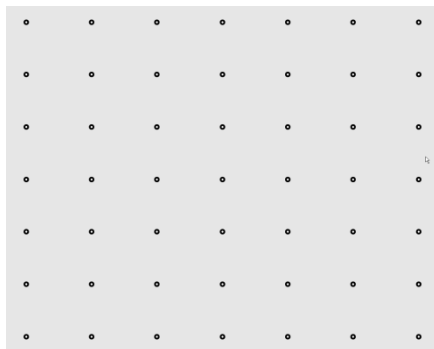
The following calibration pattern will show on the screen:



Wait a while, then you will hear a prompt tone. That indicates the completion of the auto calibration and the CM2 PRO system is now ready to operate.

Manual Calibrate

Click or right click the system tray on the  icon . On the pop-up menu - Click “Calibrate”. After that, a flashing green dot will appear on the top left of the project image. Please do not move the receiver or projector during calibration. Place the Primary E-Pen tip at the center of the green dot (on the projection screen) and press for about 0.5 to 1 second. This indicates calibration of this sampling point has been completed. Then, next dot will appear automatically, repeat sampling until all the dots turn black.





Then you will hear a prompt tone. That indicates the completion of the manual position calibration and the CM2 PRO system is now ready to operate.

11. Operating mode

Windows mode

After FreeBoard activation, a floating toolbar will appear on the desktop. The user will then be present under Windows Mode which is the initial state. Under this mode, users can operate the E-Pen directly on the projection screen. Such as "click", " double click", "drag" and so on. Users also can do drawings on the desktop or annotate on documents such like Word, Excel, PPT,HTML or other file formats in order to review, print, or forward it to others.

Whiteboard mode

To enter Whiteboard Mode, click  icon on the floating toolbar or click the  icon to enter the Whiteboard full screen mode.

Under Whiteboard mode, all the FreeBoard's menu, function buttons and attributes column will be present.

Under the Whiteboard full screen mode, it supports a full screen working area with floating toolbar.

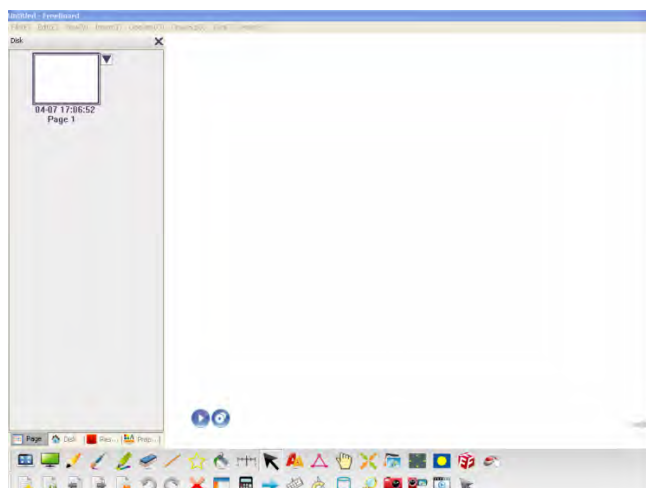
12. Interface Introduction

Windows Mode



Use floating toolbar to provide interactivity.

Whiteboard Mode



Which contain a 'Menu bar' at the top to provide all the functions of toolbar buttons and other FreeBoard functions (i.e. **File (F)** **Edit (E)** **View (V)** **Insert (I)** **Operate (O)** **Drawing (D)** **Tool (T)** **Help (H)**).

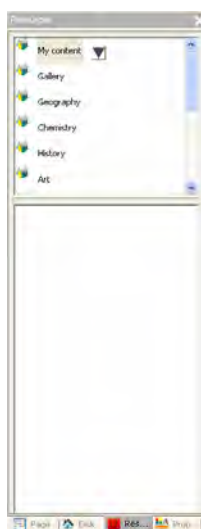
The resource toolbar (on the left of the Whiteboard Mode) which contained four labels. (ie Page, Disk, Resources and Property).



Page



Disk



Resources



Property

Under Page, all the pages are displayed, users can add new page or delete page . Disk label displays all local files. Under Resources, there are different education curriculum resources for users to choose. Users may set object attributes and drawing tool properties under Property.

Resource toolbar could be hidden or shown by 'View' option under 'Manu toolbar', or click



'button in 'Drawing toolbar'. Double clicks on the title bar of the Resource toolbar, will toggle between floating and side-docking mode. Click button 'X' to hide Resource

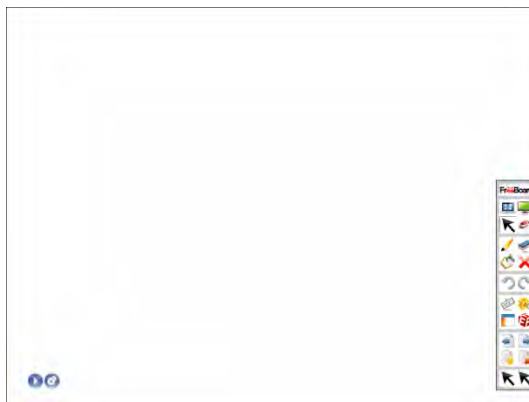
toolbar, click button'→' to change the position of the side-docking toolbar from left to right or right to left.

Whiteboard area: For drawing and editing.

Drawing toolbar, Assisting toolbar: Support all functions of drawing, document, page etc.



Whiteboard Full Screen Mode

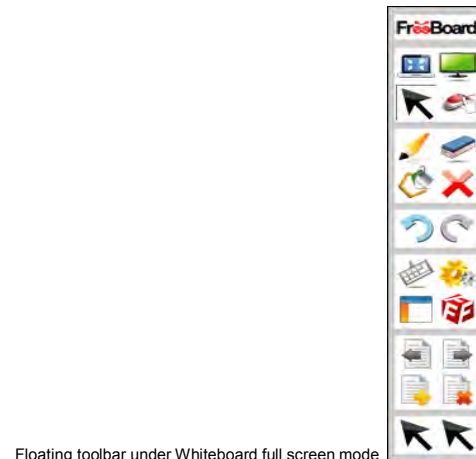


Use floating toolbar to provide interactivity.

Floating toolbar: It contains common used tools for drawing and editing. The functions provided will be difference under different mode.



Floating toolbar under Windows mode



Floating toolbar under Whiteboard full screen mode


13. Drawing tool




Pencil

Pencil is for free drawing or annotation. The pencil has attributes like color, width, transparency, line style, start/finish...etc. FreeBoard has six pencil styles as the picture below :



When  is selected under pencil toolbar, the drawing will act as a similar geometric figure.

Users could select pencil by the following ways:

- A. Menu bar-Drawing -pencil.
- B. Select  button on drawing toolbar or floating toolbar.

Users could set pencil attributes like color, width, transparency, line model, start/finish by attributes label under 'Property' toolbar.




Line

Draw straight line or camber line on whiteboard. The line has properties like color, width, transparency, line model, start/finish...etc. FreeBoard has six line styles as below:



Select line by the following ways :

A. Menu bar -Drawing -line.

B. Click , Select  button on drawing toolbar or floating toolbar.

User could set line attributes like color, width, transparency, line style, start/end by attributes label under 'Property' toolbar.



Polygons

Draw basic geometric figure. It has attributes like color, width, transparency, line style...etc, also some filling styles such as solid, texture, gradient, picture, blank (no filling)...etc. There are 15 kinds of basic geometric figure as follow.

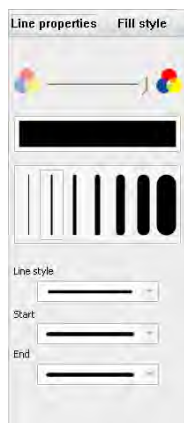


Polygons can be select by the following ways :

A. Menu bar – Drawing - Basic graphic

B. Click  . Select  on Drawing toolbar/Floating toolbar.

Users can set polygon's properties like color, thickness, transparency, line style...etc by attributes label under Property toolbar, also change filling style like solid, texture, gradient, picture and blank (no filling).



Custom multilateral graphic

Draw custom polygon on whiteboard. It has properties like color, thickness, transparency,

line style...etc. Also some filling styles such as solid, texture, gradual change, picture, blank (no filling)...etc. There are some customize polygon style as follow :



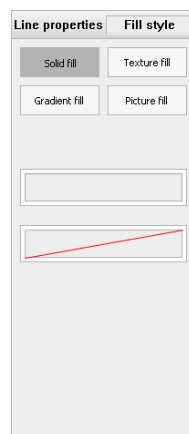
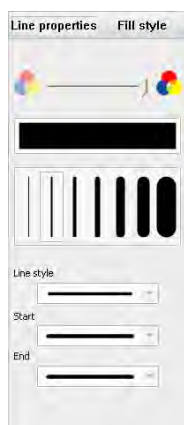
Click left button to start drawing. When once click, it will add one pitch point, double click or click right button to finish drawing.

Select customize polygons by the following ways.

A. Menu bar-Drawing – Custom multilateral graphic

B. Click  , Select  on Drawing toolbar/Floating toolbar.

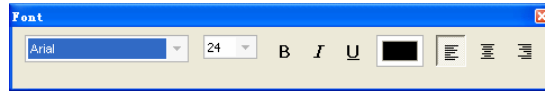
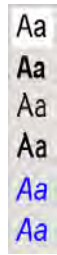
Custom multilateral graphic attributes like color, width, transparency, line style and also filling style like solid, texture, gradient, picture and blank (no filling)...etc. Can be modified on Property toolbar (there is no filling style for customize-line).



Insert text

Insert text under whiteboard mode. The insert text attributes such as font, font size, font modification, color, alignment, transparency...etc, can be select as follow :

FreeBoard offers six text styles.



Select text by following ways :

A. Menu bar-Drawing –Text

B. Click  on Drawing toolbar/Floating toolbar.

Text can be insert by click on any where on the whiteboard area, a text insertion box will appear. Now user can type using the on-screen keyboard or the computer keyboard. Notice, after insertion. User may click on the speaker icon at the end of the text in order to have the text read out by the system.





Filling

User could fill color or pattern for geometric figure of polygons and customize polygons. FreeBoard offers six filling style as below :



Select filling by following ways :

A. Menu bar-Drawing –Filling

B. Click  , Select  on Drawing toolbar/Floating toolbar



Eraser

Wipe the drawings and objects (not include flash) by eraser. The software contains three different width eraser and an object eraser.



This just wipes the pencil drawings.

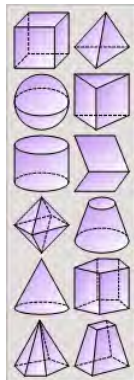


This could wipe the objects by single click on it or regionally choosing the objects (not include flash).



3D graphic

You can insert 3D graphic on the whiteboard. The 3D graphic have properties such as color, width, transparency, line style. There are also some filling styles like solid, texture, gradual change, picture and blank (no filling). There are 12 difference kinds of 3D graphic as show below.

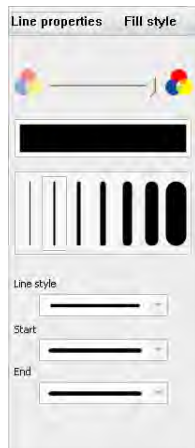


Select 3D graphic by the following ways :

A. Menu bar-Drawing –3D graphic

B. Click  on Drawing toolbar.

Users could set polygon property through property label on the Property toolbar such as color, thickness, transparency, line style...etc, meanwhile could also choose different filling style like solid, texture, gradual change, picture and blank (no filling)...etc.



14. Tagging tool





Length marker

Use to Draw a line segment with length value on the whiteboard.

Select length marker tool by following ways :

A. Menu bar-Drawing-Length marker

B. Click  button on Drawing toolbar, then choose  to start drawing line segment.

The length unit is mm. When selected, users could drag and drop the point to change the length of the line.



Angular dimension

Use to design an angle with degree.

Choose angular dimension tool by the following ways :

A. Menu bar-Drawing-Angular dimension marker.

B. Click  button on Drawing toolbar, then choose  to draw an angle.

Operation: Single click to draw a point on whiteboard, and drag the mouse/E-pen to

decide the length of the line. Then click it at other position, sliding position to decide the angle.



Compass

Use to draw a circle or a fan shaped.

Choose compass tool by the following ways :

A. Menu-Drawing-Compass

B. Click  button on Drawing toolbar, then choose .

Operation: Click to designate the center of circle, click again on appropriate position to determine the radius. Then click on the third position and shift mouse/E-pen to choose the angle. If the third point and second point in same position, it will then draw a circle.

15. Measuring tool



Ruler

Choose ruler tool by the following ways :

A. Menu bar-Insert-Ruler

B. Click  button on Drawing toolbar, then select .

Operation: Dragging the left part to alter ruler's angle. Move the right side to change the ruler's length.



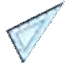

Protractor

Choose Protractor tool by the following ways :

A. Menu bar-Insert-Protractor




- B. Click  button on Drawing toolbar, then select .

Operation: Dragging periphery of protractor to convert the angle dimension. Press inside track to change the size of protractor.

-  or  **Set square:** Isosceles right angle triangle, slender triangle.

Open triangle tool by the following ways :

- A. Menu bar-Insert-Isosceles right angle triangle/ Slender triangle

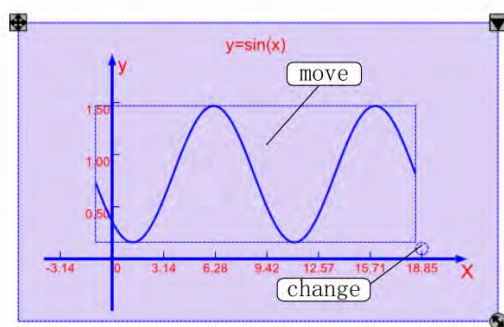
- B. Click  button on Drawing toolbar, then choose  or .

16. Functions

The user could insert functions as follow.

Menu bar-Insert-Function

Users can change the location of function curves position by dragging the function curve. Transform the function curve form when dragging the round icon on bottom right of the curve.



17. Formula

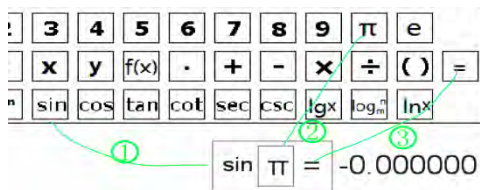
The user could insert formula as follows :

A. Menu bar-Insert-Formula

B. Click  button on Drawing toolbar, then open the tool panel as below.

0	1	2	3	4	5	6	7	8	9	π	e
a	b	c	x	y	f(x)	.	+	-	\times	\div	()
$\frac{n}{m}$	$\sqrt[n]{m}$	m^n	sin	cos	tan	cot	sec	csc	lgx	\log_n	$\ln x$

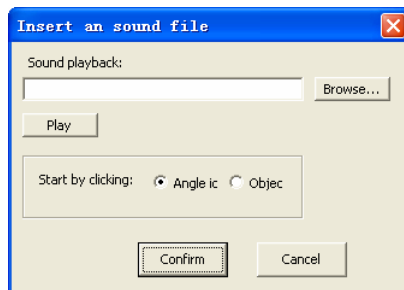
Drag the formula to whiteboard area then drag the figure and the letters into the formula's frame , drag the "=" into the frame and get the result.



18. Sound

Sound could be insert as the follow :

Menu bar-Insert-Sound



Operation: Users could insert mp3 format audio files, then the audio files will be saved into whiteboard files. There are 2 ways to play audio files. To play-back the audio files, click the corner speaker icon at the bottom right of the audio object, or simply click the audio object. The software supports up to 10 audio files to be play at the same time in one page.

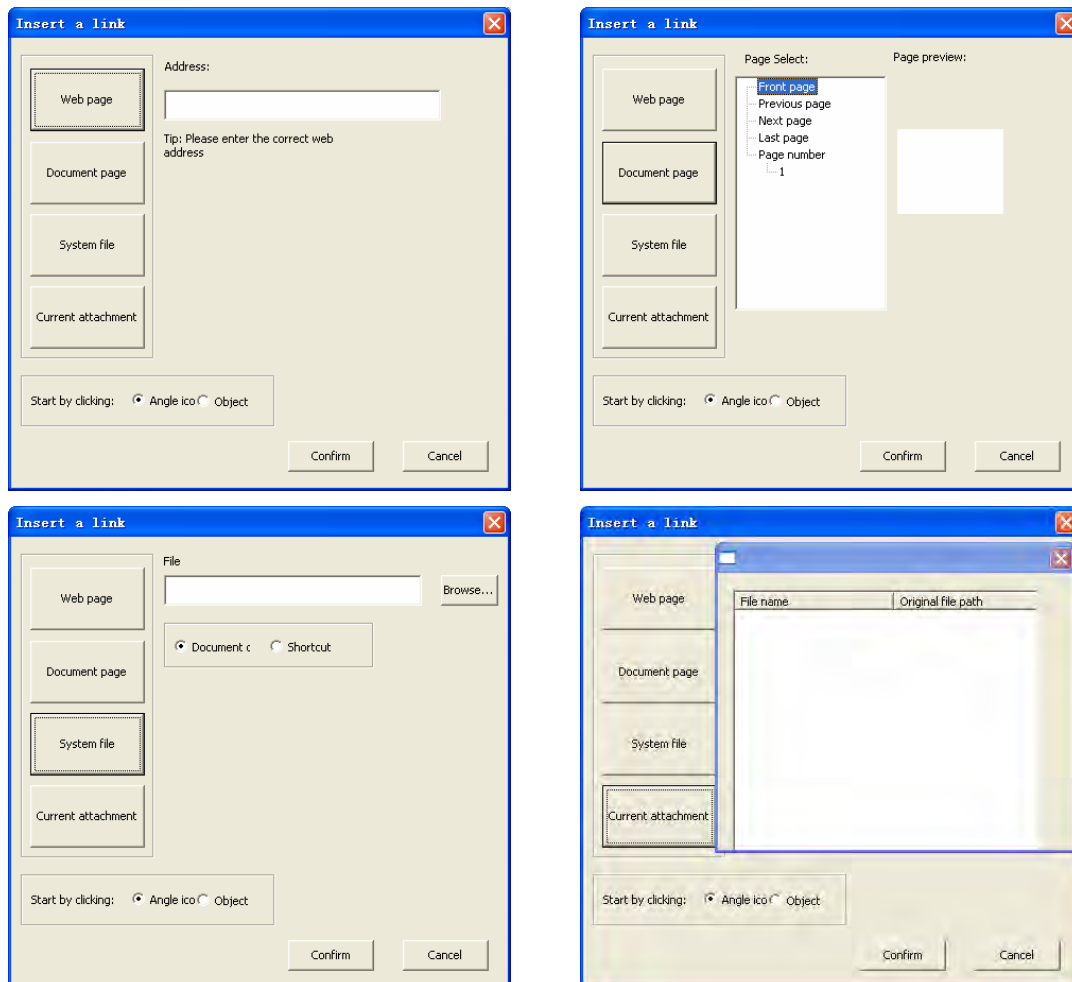
19. Link

Insert system documents link or whiteboard page link. Select 'Link' to open the file or whiteboard page directly.

You could insert link by the following way.

Menu bar-Insert-Link

There are four kinds of object link, such as web page, document page, system file and current attachment.





Operation: There are 2 ways to open the link.

1. Click the angle icon on the right bottom of object.
2. Click the object to open the link.

20. Page Operation



Add a New Page

Create a new whiteboard page under the current page.

- A. Menu bar-View-New page
- B. Click  button on Article auxiliary tool/ Floating Toolbars Panel
- C. Click  button on page label to open thumbnail menu, click **【Add】**


Delete page

Delete current page


- A. Menu bar-View-delete page
- B. Click  button on article auxiliary toolbar/Floating toolbar to create new page.
- C. Click  button, open thumbnail menu, choose 'Delete'.

Change page background

Set monochrome or pattern as the whiteboard background.



- A. Menu bar-Insert-Whiteboard background-choose the background.
- B. Click drawing toolbar  button will change background directly.

Screen roaming

Click  button on the drawing toolbar, dragging the whiteboard area, objects on current page will move correspondingly. When dragging to a certain range, the page will rollback to the original position.

Page scroll (Whiteboard page/ document page)

Click the target page on page label, under the resource toolbar.

- A. Menu bar-View-page up/page down
- B. Choose auxiliary toolbar/Floating toolbar   to turn page.

Clear Page

Clear all the objects in current page.

- A. Menu bar-Edit-Clear page.

- B. Click  button on auxiliary toolbar/Floating toolbar.

Undo, Redo

Cancel the last operation on the drawings, objects, pages. Redo the cancelled operations.

Undo or Redo by the following ways :

- A. Menu-Edit-Undo/Redo

- B. Click  button on auxiliary toolbar/Toolbars Panel.

21. Edit Objects

In FreeBoard, resources which drawn by the paint tool or inserted through Menu Column or library files will exist in the form of an objects. When selected, object could be move or resize.

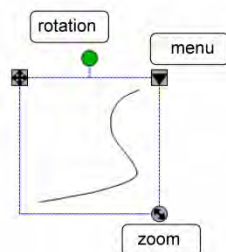
Get the objects selecting tool by the following ways :

- A. Menu bar—operate-select

- B. Select paint toolbar/  button on the floating toolbar

By the object selecting tool, users can drag the object directly or single click to activate the object's edit state. In selected edit state you can change the object's attribute and edit it. The Object editing includes: Select all 、Cut 、Copy、Paste、Delete、Clone、Combination (combination、split)、Lock (lock、unlock)、Turn (right and left、up and down)、Layer Reorder (Bring Forward、Send Behind、Move to top、Move to bottom) 、 Edit vertices .

The Rectangular frame will appear when the object is in selected state as the following picture.



Copy、Cut、 Paste、 Clone、 Delete

Operate the selected object or multi objects

- A. Menu bar-Edit/Copy/Cut/Copy/Clone/Delete

B. Open object edit Menu Copy/Cut/Copy/Clone/Delete

Combination: Merged the multi objects into one object or dived the selected objects into separated ones.

Lock: Locked object, cannot move、drag and drop、rotate or turn.

Turn: Make mirror flip (left & right, up & down) by center axis of floating rectangle.

Layer Reorder: Change the object's display level under the whiteboard mode.

Edit Vertex: Drag the object's vertex, change the shape of the image.

22. Insert objects into Microsoft Office

You can modify Microsoft Office documents (Word and PowerPoint) by insert the whiteboard objects. System support Microsoft Office 2003 or above.

Insert whiteboard objects to Microsoft Office by the following ways :

A. Menu bar-Operate-Insert Office

B. Click  button on drawing toolbar/floating toolbar to insert office documents.

Prompt

1. There should be one or more object in the whiteboard mode and open one office document before inserting.
2. Under whiteboard mode, due to the position of the window mode, different inserting position of the object will have deviation. In order to ensure the correct inserting position, please insert the object to whiteboard under windows mode.
3. You could only operate the active page when insert word document. Please move the cursor to current page.
4. Users cannot insert office documents when the documents are not in editing state. Such as: Under Word reading format view, office insertion will fail when the dialogue box is opened.

23. Resource Operation

FreeBoard supports multiple formats of resources including bmp, jpg. Peg, gif, wmf, emf ,

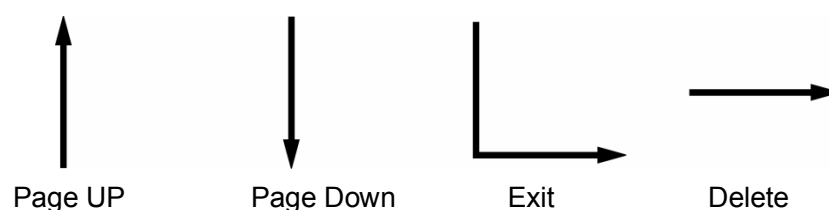
swf and FreeBoard's exclusive format resource item.

Insert resources by the following ways:

- A. Menu bar-Insert-Picture /flash /video
- B. Find the target file in Resources label under Resources tag, then drag into whiteboard.
- C. Find the target file in Resources label under Resources tag, single click the target resource, then insert into whiteboard.

24. Pen command recognition

Handwrite command (gesture command) recognition: press the button on the primary e-pen, write specific line patterns on screen, they can be recognized as predefined commands. For example:



25. Other Tools

Screen Recording

Real-time record the designated area or full screen video image, including voice in avi format.

Open Screen Recording by the following ways :


- A. Menu bar-Tool-Screen Recording

- B. Click  button on Auxiliary toolbar/floating toolbar

Interface is as follows



Record: Screen Recording Menu-Record-Start or click  recording button on toolbar.

Stop: Screen Recording Menu-Record-Star or click  recording button on toolbar and save it.

Recording Area: Set full screen recording area or regional recording area.

Recording options available: compression ratio; frame rate; regional recording to trace the cursor or not, and the speed of tracing; voice recording options.


Screen Capture

Capture full or part of the screen picture.



Open capture tool by the following ways :

A. Menu bar–Tool-Screen Capture

B. Click  button on drawing toolbar/ floating toolbar



Capture full screen



Capture the selected rectangular area



Capture the window clicked by mouse



Capture the defined area

Screen arrow

Arrow, use for indication



Open screen arrow by the following ways :

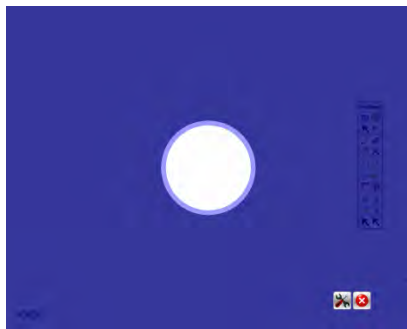
A. Menu bar-Tool-Screen arrow

B. Click  button on Auxiliary toolbar/floating toolbar

Users can drag and drop the screen arrow anywhere on the screen. Users also can change the direction of arrow when dragging the arrowhead. Right click menu to set color, transparency, angle...etc. Double or right click to close the right click menu.

Spotlight

Emphasize page content with spotlight effect. Colour and transparency outside the spotlight zone can be customizable.




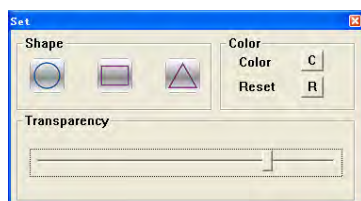
Open the spotlight tool by the following ways :

A. Menu bar-Tool-Spotlight

B. Click button  on drawing toolbar / floating toolbar/floating tool bar

Drag at the spotlight side to change the shape, size of the spotlight. Drag at the spotlight background to move the spotlight.

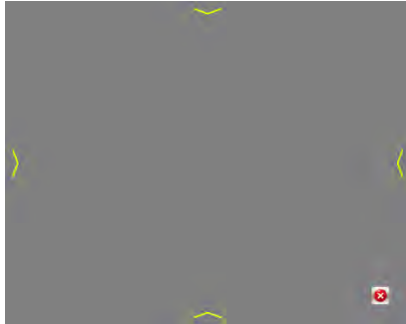
Click button  to open setting menu:



Set dialogue box for spotlight shape, background color and transparency.

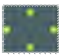
Screen Mask

Partially or totally cover the screen, use to emphasize on the key content.



Open screen mask by the following ways :

A. Menu bar-Tool-Screen Mask

B. Click on  button on drawing toolbar/ floating toolbar


Drag to resize the shade, but only can be operated in one direction(horizontal or vertical).

On-screen keyboard.

Open the on-screen keyboard. Soft keyboard will be opened automatically pop up when inserting text or during file save is chosen.

Open on-screen keyboard by the following ways :

A. Menu bar-Tool-On screen keyboard

B. Click on  button on auxiliary tool bar/ floating toolbar

Magnifier

Open magnifier

Calculator

Open the calculator comes with Windows System.

Video Capture


Get the image from user's camera and insert into the whiteboard

Menu bar-video capture

Menu

Provide the menu, which have the same function with menu bar.

Open menu by the following ways :

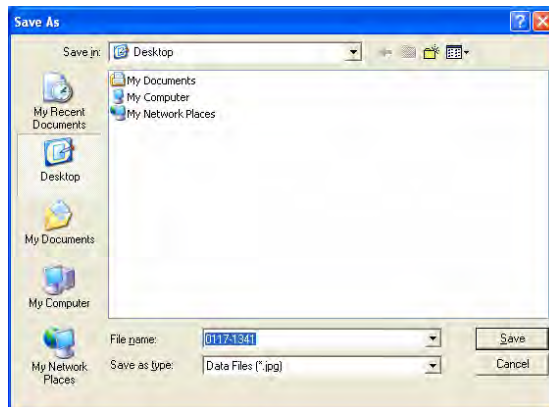
Click on button  on drawing toolbar/floating toolbar

Save Screen Capture

Save the screen capture with picture format to local computer

Open screen capture by the following ways :

Click on button  on floating toolbar



26. Record/Play

FreeBoard will record all operating process on whiteboard in time. Users could choose whether to record with voice.

Record: FreeBoard's default setting is recording.

Play: Single click on button  to stop playing recording videos.

Playing setting: Click on button  on whiteboard to open up setting menu

Play	
Pause	
Playback speed	▶
✓ Showing a single page	
Continuous screening	▶
Blank time	▶
Sound recording	▶
Play the sound	▶

Setting Menu include: play, stop, playback speed, single page showing, showing continuously, blank time, voice recording, play voice ...etc.

Playback speed: set playback speed, there are options of x1 x2 x3 x4 to be chosen, all could play voice synchronously except x1.

Continuous screening: play from the first or current page to the end page.

Blank time: choose whether to play the period which have no operations. Voice won't be played when blank period not played.

Sounding recording : record or not

Play the sound: play or not

Set playing options again during the playing process

Pause	
Pause	
Playback speed	▶
✓ Showing a single page	
Continuous screening	▶

27. File Operation

Create new file: Create a new FreeBoard file.

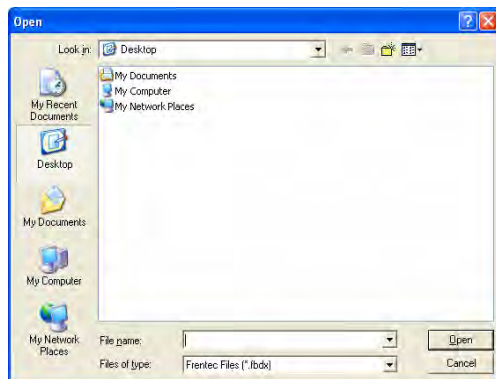
Create new file by the following ways :

Menu Bar-File-Open up

Open: open the whiteboard file saved as fbdx format.

Open by the following ways :

Menu bar-File-Open



Save/ Save as: save the editing whiteboard file to local disk as fbdx format.
Save by the following ways :

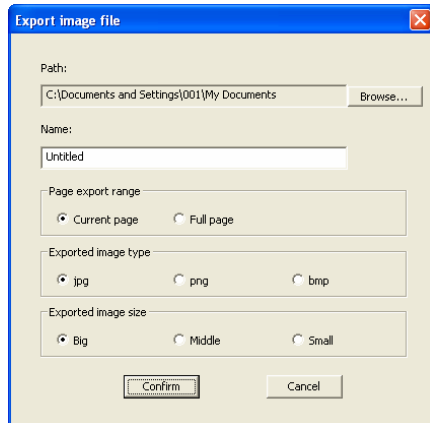
A. Menu Bar –File-Save/Save as

B. Click on  button on auxiliary toolbar.



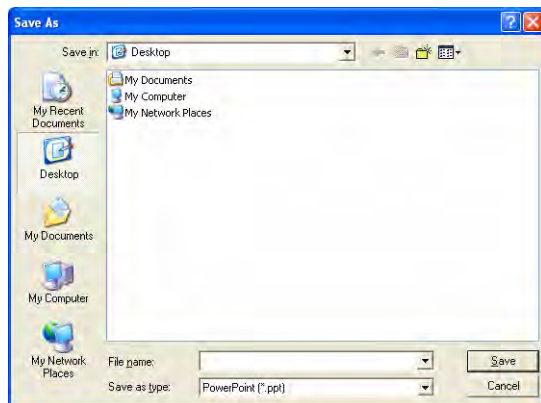
Export: export single page or the whole whiteboard pages as picture or ppt.
FreeBoard support picture format like BMP, JPG, and PNG. The picture's size will be saved when exported.
Export to image by the following ways:

Menu bar-File-Export to image



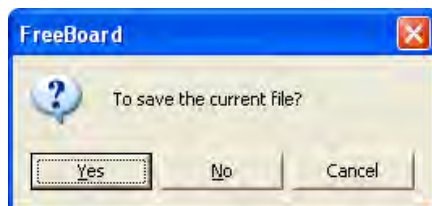
Export to ppt by the following ways :

Menu bar-File-Export as-ppt




Exit: Close the operating page.


The system will prompt to save when the document is still in editing state.

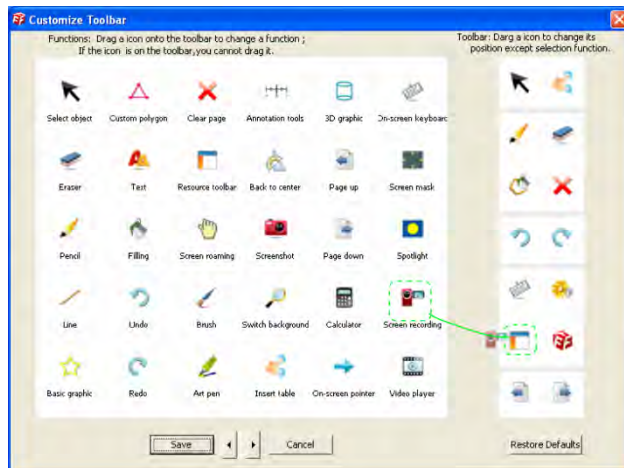


Exit by the following way :

Click or right click the icon  on system tray to open system tray menu and choose 'Exit'

28. Custom floating tool bar

Click lower left  button to open Customize Toolbar window.



Drag the icon in the left frame to right frame to replace the original one

29. The operation of Primary and Secondary E-pen

The CM2 PRO support dual E-Pen operation, which is divided into primary E-Pen and Secondary E-Pen as per operation privilege.



Primary E-pen: with full privilege to operate computer and whiteboard.

Secondary E-pen: only for operation stipulated on Secondary Toolbar.

Assisting toolbar



Open assisting toolbar by the following ways :

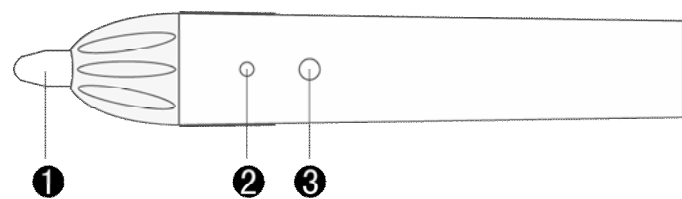
Click button  in the bottom right corner of **【Floating Toolbar】**, or could click the button  on article auxiliary tool in whiteboard mode.

User may also holding down the secondary E-pan tip onto the screen for a few seconds then the assisting toolbar will appear.



Primary pen

1. Tip 2. Power indicator 3. Infrared receiving window 4. Pen command button



Secondary pen

1. Tip 2. Power indicator 3. Infrared receiving window