



VCOM INTERNATIONAL LTD.

Spec. of Bluetooth Headphone

DE711

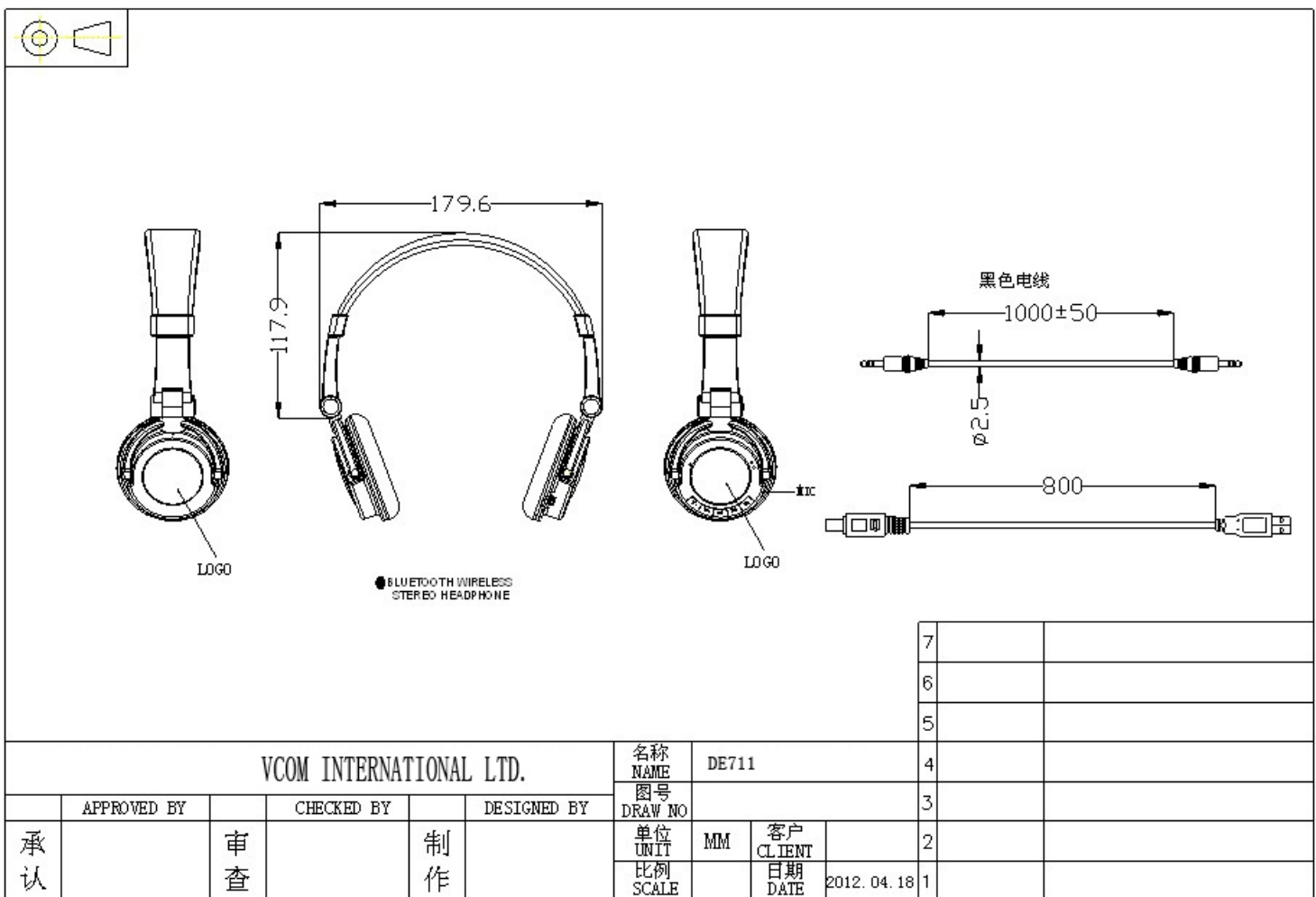
A. Profile

DE711 is a Bluetooth 2.1 + EDR stereo headset with built-in microphone. This headset is volume adjustable, with last/next music pick up, pause function and 360 degree Omni direction microphone, built-in echo reduction circuits. The music would be paused automatically while phone call's coming in, and would be started again while you end the phone call, so you can enjoy your music at any moment.

B. Model

DE711

C. Product Drawing





D. Button Description :



: ON/OFF/Play/Pause/; Keep press it to power on, continued press it to enter pairing mode .

When use the headphone listen mobile phone music, press this button for play/pause.

Press this button for communication when a call's coming in.



: Press this button for next song.



: Press this button for last song.

V+ : Press this button to add the volume.

V- : Press this button to lower the volume.

E. Specification :



Static Current :	Under 10UA
Working Current :	Under 30mA
Working Voltage :	4.2V
Charge Current :	30mA---150mA (Red LED light up)
Headset Output Power :	Max output power : 20mw*2 (32Ω)
Battery Capacity :	330mAH 3.7V
Charge Time :	3 hours
Working Time :	Above 8 hours
Battery Life :	≥300 times rechargeable
Available Distance :	≥10M (Open and no block)
Input Voltage :	DC 5V/200mA
Standby Time :	Above 30 hours
Support Bluetooth 2.1 version +EDR	

F. User Guide


1. Pairing :


Keep press  for 6---8S, the headset would search the other Bluetooth

device automatically (Blue LED /Red LED flash by turns) , then open Bluetooth function of mobile phone, choose to search a new Bluetooth device, when mobile phone show model MMD-0553, that means it has found the headset, choose to link the headset, input Bluetooth default password 0000, pairing succeed.

2.  for next song,  for last song

3. V+、V- for volume adjust

4. Press  for pause. Pause more than 50s, then the machine would power off automatically

5. Keep press  to power off the headset.

6. Use USB cable for charge. When the machine is charged, red LED light up and would out after finishing charge.

7. Audio In :

- a. Power off the headset.
- b. Plug one end of OD3.5 to OD3.5 audio cable in “AUDIO IN” OD3.5 jack of headset.

Plug the other end of this cable in OD3.5 jack of MP3, so that it can act as a wired headset.

G. Reliable Test.

Test Condition, normal temperature (5-35°C), normal humidity (45-85%), normal pressure (860-1060mbar), temperature $20 \pm 2^\circ\text{C}$, relative humidity 60-70%, pressure is 860-1060mbar.

High Temperature Test: It is in normal condition after exposing at 50°C for 60 hours.

Low Temperature Test: It is in normal condition after exposing at -30°C for 60 hours.

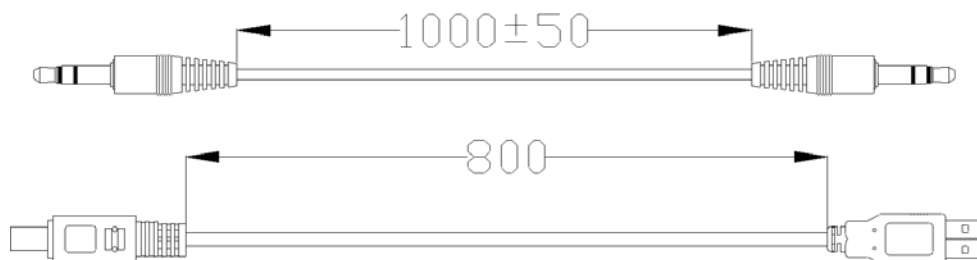
Humidity Test: It is in normal condition after exposing at 30°C, 95% for 60 hours.

Power Test: No difference after inputting 1mW noise for 48 hours .

H. Note

1. Don't expose product in high temperature or insulation place.
2. Don't keep discharge product for a long time, please charge it every 15 days at least.

I. Accessories



1. OD3.5 to OD3.5 black audio extending cable
2. USB A to Mini USB 5Pin connector

FCC NOTE

This device complies with Part 15 of the FCC Rules.

Operation is subject to the following two conditions: (1) this device may not cause harmful interference, and (2) this device must accept any interference received, including interference that may cause undesired operation.

THE MANUFACTURER IS NOT RESPONSIBLE FOR ANY RADIO OR TV INTERFERENCE CAUSED BY UNAUTHORIZED MODIFICATIONS OR CHANGE TO THIS EQUIPMENT.

This equipment has been tested and found to comply with the limits for a Class B digital device, pursuant to part 15 of the FCC Rules. These limits are designed to provide reasonable protection against harmful interference in a residential installation. This equipment generates uses and can radiate radio frequency energy and, if not installed and used in accordance with the instructions, may cause harmful interference to radio communications. However, there is no guarantee that interference will not occur in a particular installation. If this equipment does cause harmful interference to radio or television reception, which can be determined by turning the equipment off and on, the user is encouraged to try to correct the interference by one or more of the following measures:

- Reorient or relocate the receiving antenna.
- Increase the separation between the equipment and receiver.
- Connect the equipment into an outlet on a circuit different from that to which the receiver is connected.
- Consult the dealer or an experienced radio/TV technician for help



VCOM INTERNATIONAL LTD.

J. Product Photos:

