

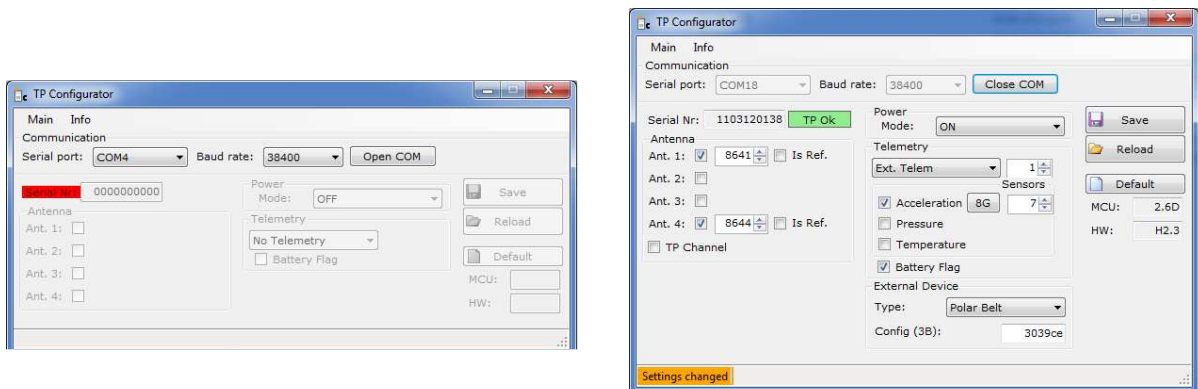
## User manual transponder LPM Tp. Ser.1



Transponder LPM Tp. Ser. 1	
power supply:	Lithium-Ion Akku: 1500mAh, 3,7VDC
runtime:	appr. 5 hours
transmission power:	25mW EIRP
transmission frequency:	5,725 – 5,875 GHz, licence free ISM
dimension:	90 x 60 x 15mm (L x B x D)
weight:	61 g
data channel:	4 Byte/Messzyklus
type of protection:	IP54
antennas:	balun antenna: 360°h / 120°v / 3 dBi
	F-antenna: 360°h / 90°v / 4 dBi

The shock- and waterproof transponders are available in different types. Individual adjustments are possible after inquiry. The transponder is triggered by the master base station to transmit its own radio signal. The transponder is used by the user or operator and can be used in sports or entertainment. The transponder can also be used for tracking vehicles or animals. The transponder communicates up to 1.000 measurements per second with the base stations and has a weight of 61 gram.


The transponder has to be configured with a special software named transponder configurator. The user can add a special ID-number or he can also define how many antennas are connected with the transponder. With this software it is also possible to switch the transponder on or off




This equipment has been tested and found to comply with the limits for a Class B digital device, pursuant to Part 15 of the FCC Rules. These limits are designed to provide reasonable protection against harmful interference in a residential installation. This equipment generates, uses and can radiate radio frequency energy and, if not installed and used in accordance with the instructions, may cause harmful interference to radio communications. However, there is no guarantee that interference will not occur in a particular installation. If this equipment does cause harmful interference to radio or television reception, which can be determined by turning the equipment off and on, the user is encouraged to try to correct the interference by one or more of the following measures:

- Reorient or relocate the receiving antenna
- Increase the separation between the equipment and receiver
- Connect the equipment into an outlet on a circuit different from that to which the receiver is connected
- Consult the dealer or an experienced radio/TV technician for help.

**inmotiotec GmbH**  
Local Position Measurement



Product	Transponder V23
Serial no.	123456
Power supply	Li-Pol 3,7VDC
Transm. power	25mW EIRP
Frequency	ISM 5,8GHz



FCC ID: 2AATD-TPV23

The device complies with part 15 of the FCC Rules. Operation is subject to the following two conditions: (1) This device may not cause harmful interference, and (2) this device must accept any interference received, including interference that may cause undesired operation.

**WE DO IT FIRST.**  
ABATEC GROUP AG

**abatec**  
electronic solutions  
**inmotiotec**  
local position measurement  
**sentiotec**  
world of wellness  
**wallatec**  
modern gastronomy  
**lixtec**  
dynamic light solutions

**inmotiotec GmbH**  
**local position measurement**  
Oberregauer Straße 48  
4844 Regau, Austria  
T +43 (0) 7672/277 20-0  
F +43 (0) 7672/277 20-401  
E [info@inmotiotec.com](mailto:info@inmotiotec.com)  
[www.inmotiotec.com](http://www.inmotiotec.com)

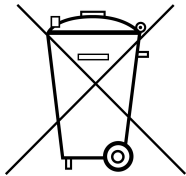
Raiffeisenbank Vöcklabruck  
BLZ 34710  
Ktn. 2.146.272  
IBAN: AT523471000002146272  
BIC: RZOOAT2L710  
UID-Nr.: ATU 66200719  
FN 356573 y  
Firmenbuchgericht: Wels

## Disposal and recycling information

The transponder must be disposed of properly according to local laws and regulations. Because it contains a battery, the transponder must be disposed of separately from household waste. When your transponder reaches its end of life, contact Inmotiotec.

### Battery replacement:

The lithium-ion battery in your transponder should be replaced only by Inmotiotec and must be recycled or disposed of separately from household waste.



The symbol above means that according to local laws and regulations your product and/or its battery shall be disposed of separately from household waste. When this product reaches its end of life, take it to a collection point designated by local authorities. The separate collection and recycling of your product and/or its battery at the time of disposal will help conserve natural resources and ensure that it is recycled in a manner that protects human health and the environment.

### Support:

**Telefon: 0043 7672 27720 – 0**

**Web: <http://www.abatec-ag.com/inmotiotec-rtls/>**