

# **ABViewer @ Windows**

## **User's Manual**

AB2301311001

# Table of Contents

1. Install ABViewer software onto PC .....	2
2. Playback.....	5
3. Snapshot .....	6
4. Save Video.....	6
5. Cloud Home.....	7
6. LED Light .....	9
7. Settings.....	10
7.1 Account Setting .....	10
7.2 Wireless Setting.....	11
7.3 Language Setting .....	11
7.4 Recording Setting.....	12
7.5 Capture Setting.....	12
7.6 Updates Setting .....	13
7.7 System Tools .....	13
7.8 Sysc Time .....	14
7.9 OSD (on screen display) .....	14
7.10 privacy mode .....	14
7.11 frequency .....	15
7.12 flip control.....	15
8. Sharing .....	15
9. HD/SD.....	16

## 1. Install ABViewer software onto PC

### Step 1: Download

Open <http://www.above-link.com/download.php> and download client software. Open installer and go through the quick setup process to complete the installation.



Double click ABViewer icon located on the desktop to open.

### Step 2: Login

Login with the provided camera ID and password (default password:111111) that are affixed on the back of the camera. AS shown in Figure 1.1

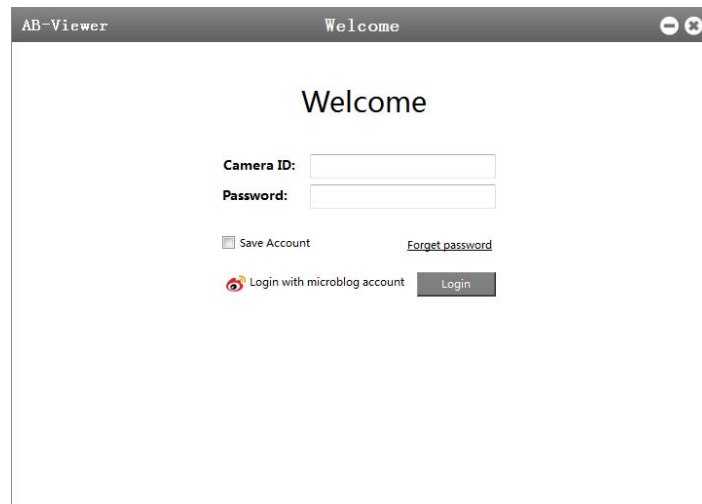


Figure 1.1

When login is successful, system will automatically pop up an interface to modify default password. As shown in Figure 1.2.

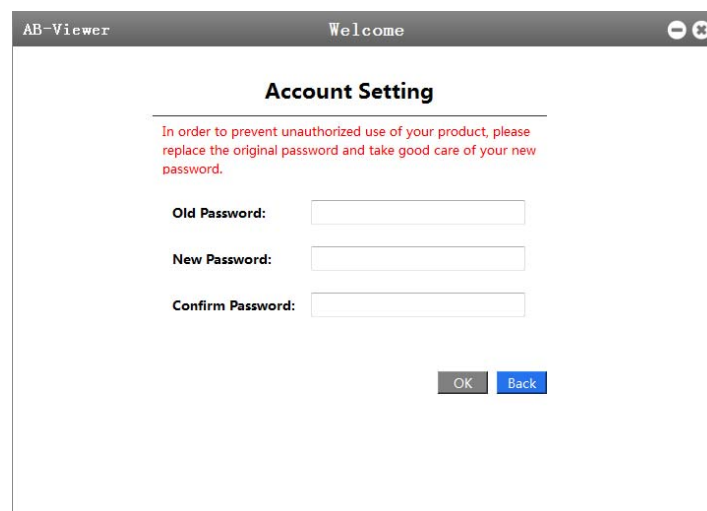


Figure 1.2

“**Forgot Password**” is a function that allows users to recover lost password as shown

in Figure 1.3. If the camera is not located in the local area network password retrieval will result in failure, as shown in Figure1.4.

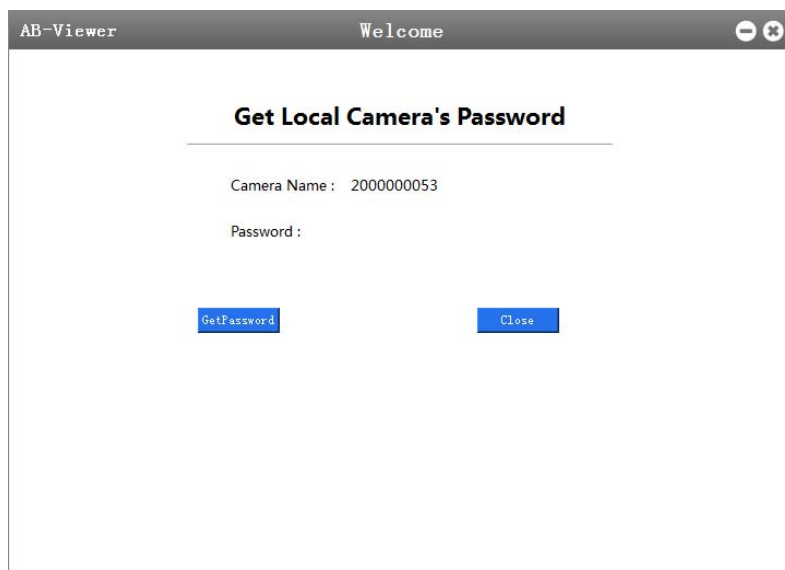


Figure 1.3

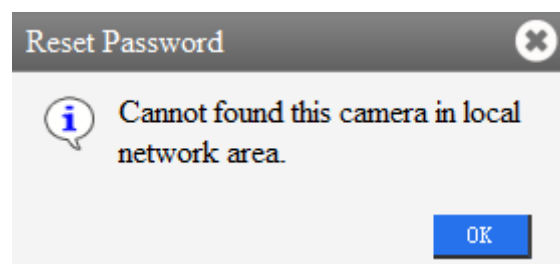


Figure 1.4

### Step 3: View Live Video

Click the grey bar at the top, you can choose if display the full screen. As shown in Figure 1.5, Figure 1.6.



Figure 1.5



Figure 1.6

## 2. Playback

If SD card is not inserted, it will pop up the next prompt box. As shown in Figure 2.1.

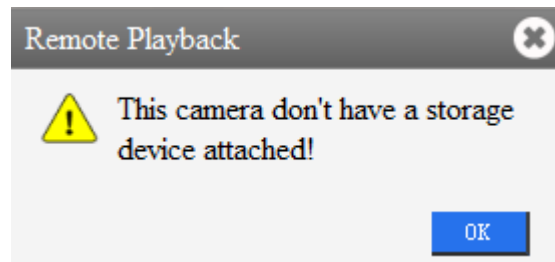


Figure 2.1

When the SD card is inserted, camera will automatically make recording.




Click , you can view all the videos. As shown in Figure 2.2.



Figure 2.2

Click  will be back to the live view.

### 3. Snapshot

Click  to save the real-time picture in the computer. As shown in Figure 2.3.

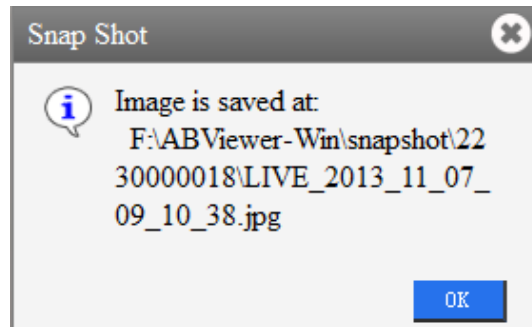


Figure 2.3

### 4. Save Video



Click  to save the real-time video in the computer.  is on the upper left corner, it means the video is being saved. As shown in

Figure 2.4. Click  again to stop saving the video.

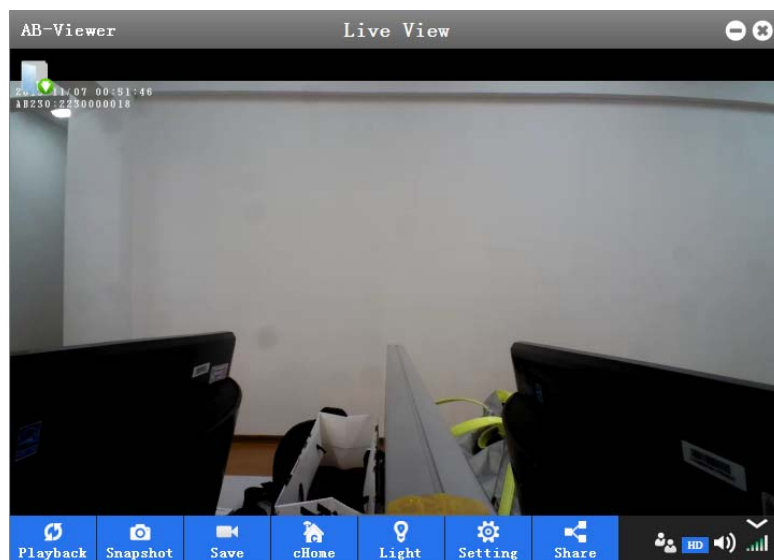



Figure 2.4

## 5. Cloud Home

Click  to pop up the page of the cloud home mode settings.

As shown in Figure 2.5

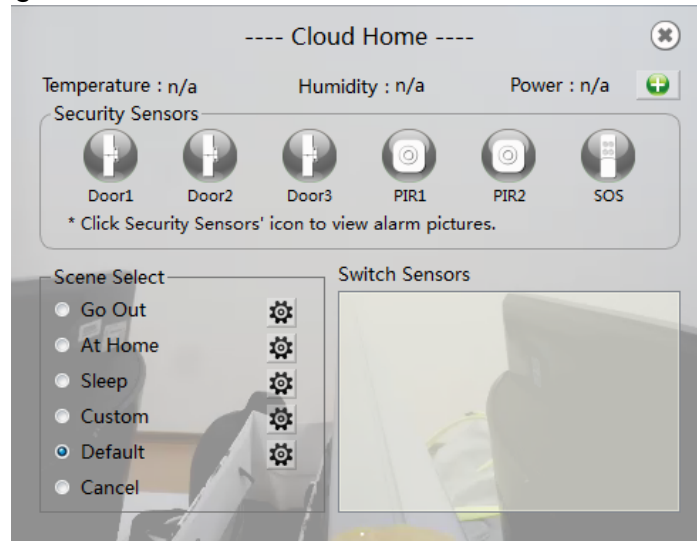



Figure 2.5

Click  at the upper right corner, you can get into the interface to add or remove Z-Wave sensors. As shown in Figure 2.6

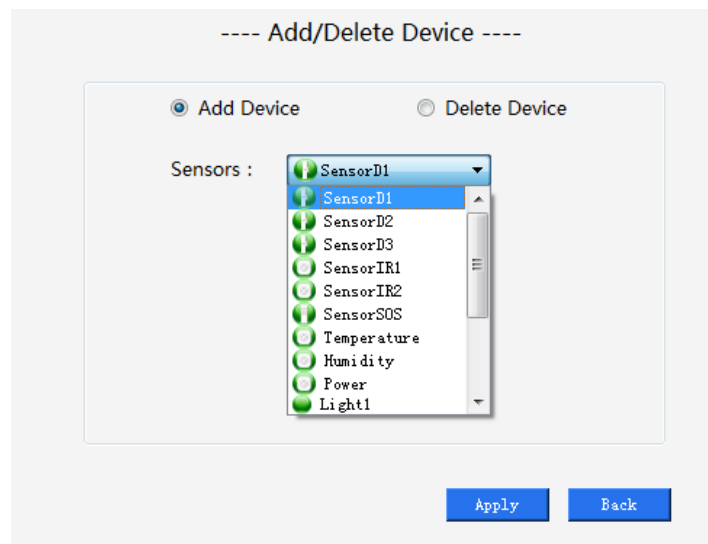


Figure 2.6

When the sensor is adding or deleting successfully, the corresponding prompt will pop up. As shown in Figure 2.7,2.8.

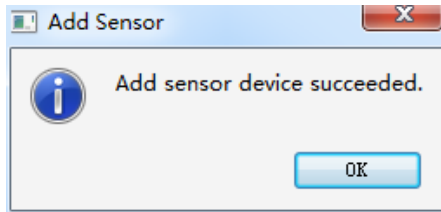


Figure 2.7

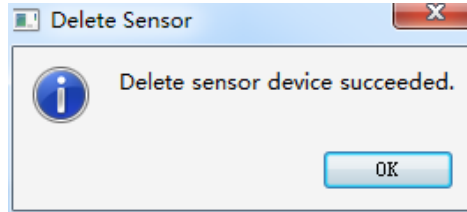


Figure 2.8

As shown in Figure 2.9, one door sensor and one temperature sensor are set up successfully.

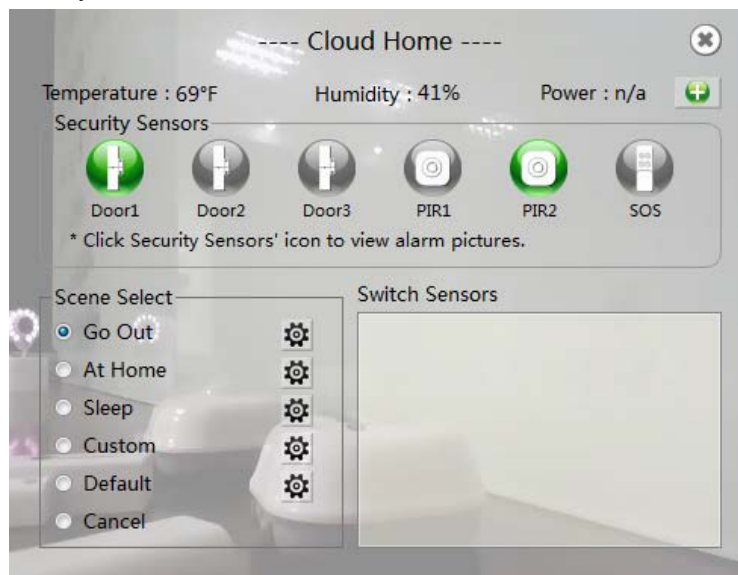


图2.9

When the sensor icon is green, it is in normal state. For example,



indicates the door or window is closed.

When the sensor icon is red, it is in abnormal state. For example,



indicates the door or window is opened.

When alarm is triggered, the cHome icon will turn in red and blink. Click it to enter cloud home interface. Any security sensor icon can be clicked to view alarm pictures. As shown in Figure 2.10.



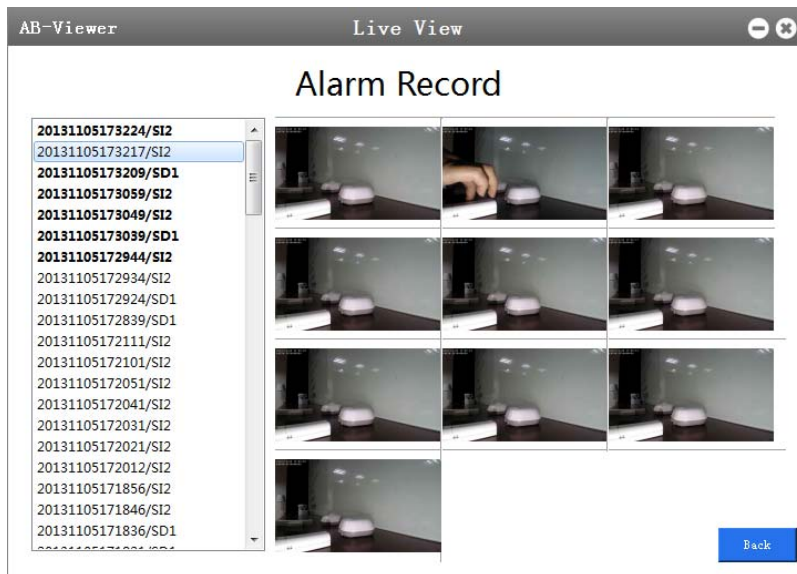


Figure 2.10

When an alarm is triggered, camera will automatically capture a group of pictures per second, a total of 10. Alarm records are listed in chronological order, if the group name is in bold, it indicates the photos are not reviewed. Ten photos can be enlarged and downloaded to the local computer, as shown in Figure 2.11.

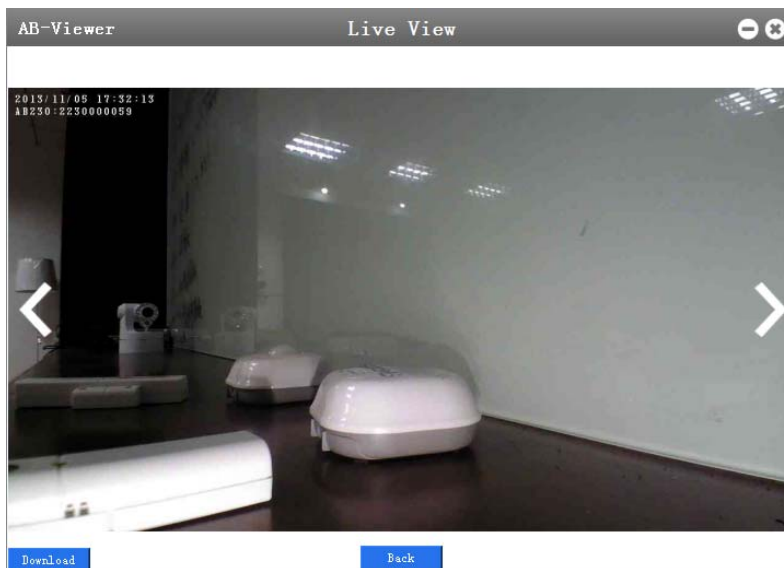





Figure 2.11


## 6. LED Light

Click  to control the light to on or off.

 indicates the light is on.

 indicates the light is off.

## 7. Settings

Click  to the setting interface. As shown in Figure 2.12

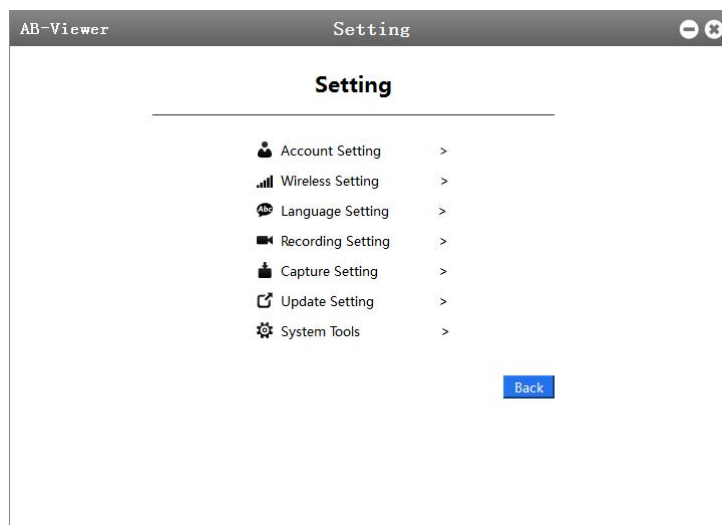


Figure 2.12

### 7.1 Account Setting

Click "Account Setting" to change the password, as shown in Figure 2.13.

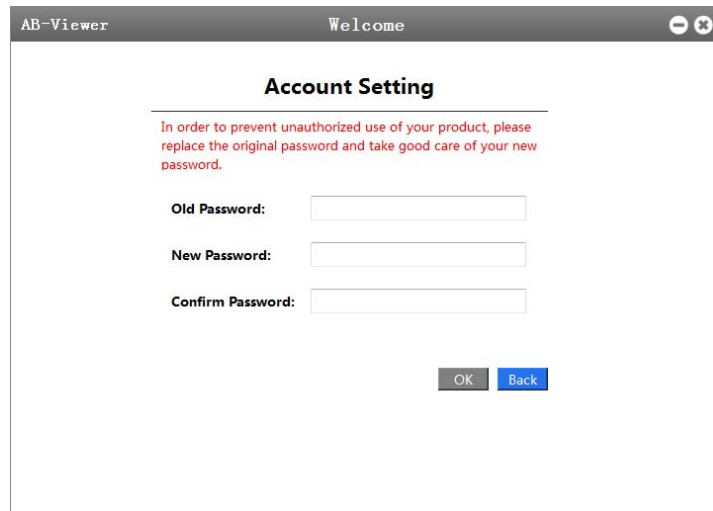


Figure 2.13

## 7.2 Wireless Setting

Click "Wireless Setting" to change the wireless access point, as shown in Figure 2.14.

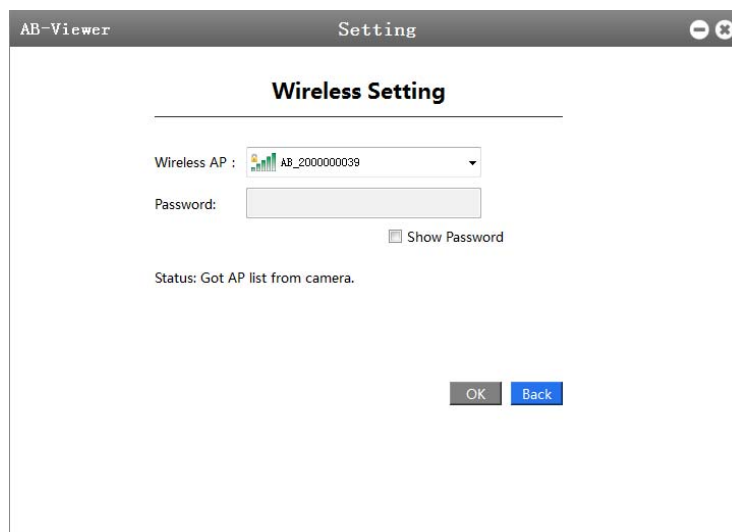


Figure 2.14

## 7.3 Language Setting

Click "Language Setting", the language English or Chinese can be switched, as shown in figure 2.15.

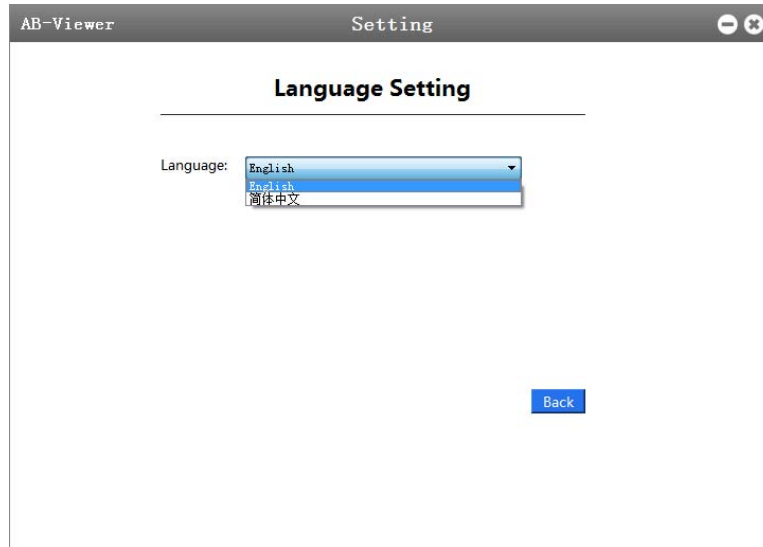


Figure 2.15

## 7.4 Recording Setting

Click “Recording Setting” to set the SD card recording.

The recording of video and audio can be selectable, as shown in Figure 2.16.

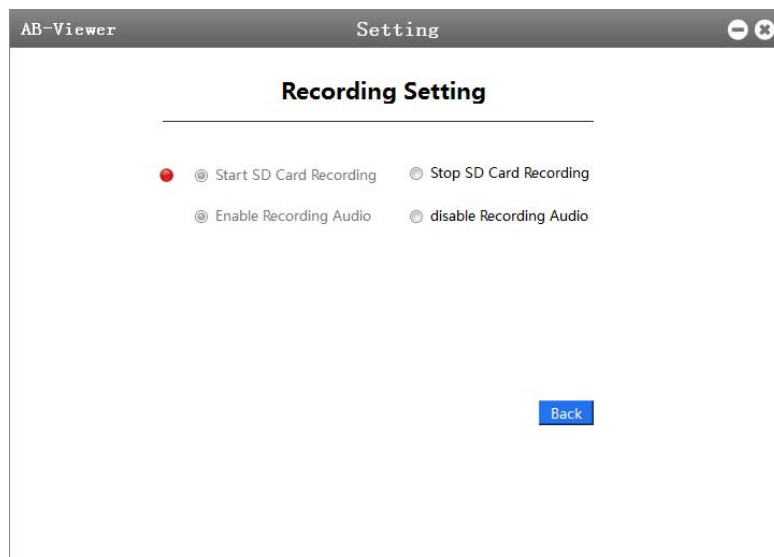


Figure 2.16

## 7.5 Capture Setting

Click “Capture Setting” to change the saving path of the snap shop images and real-time video. As shown in Figure 2.17.

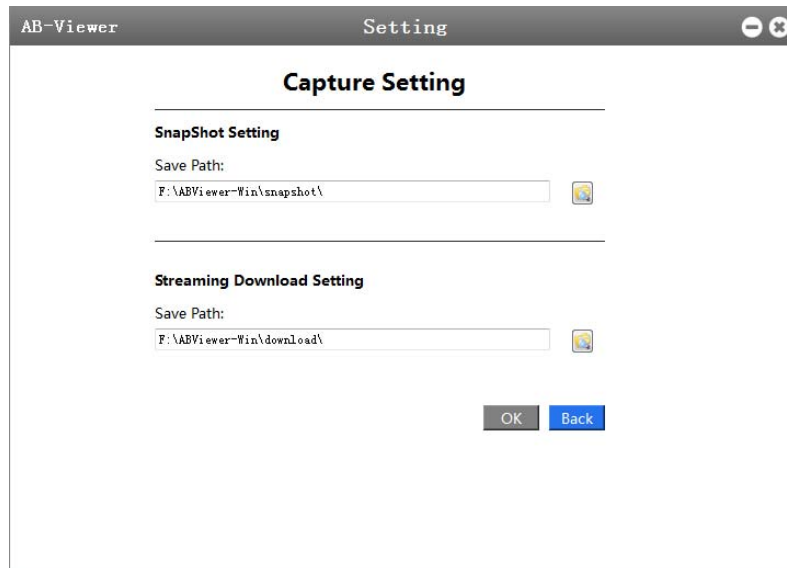


Figure 2.17

## 7.6 Updates Setting

Click “Updates Setting” to check if the new version is available and download the updates online. As shown in Figure 2.18.

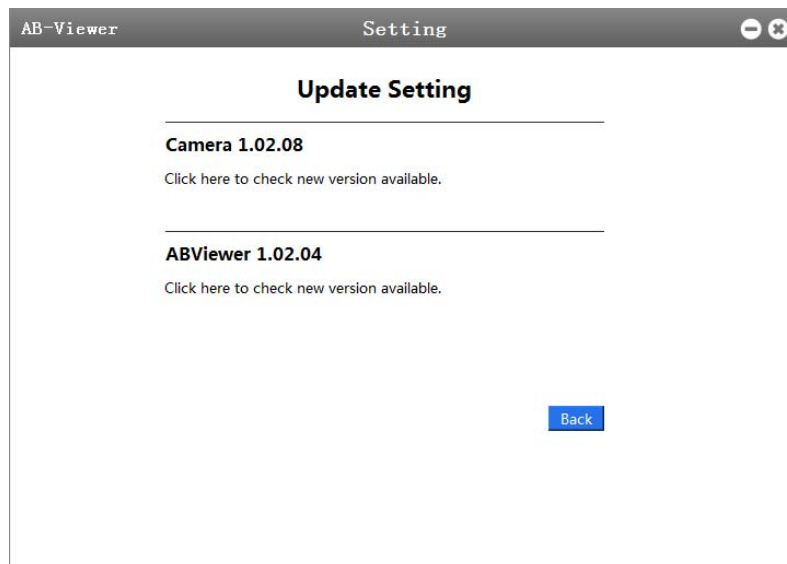


Figure 2.18

## 7.7 System Tools

Click “System Tools” to reboot camera, as shown in Figure 2.19.

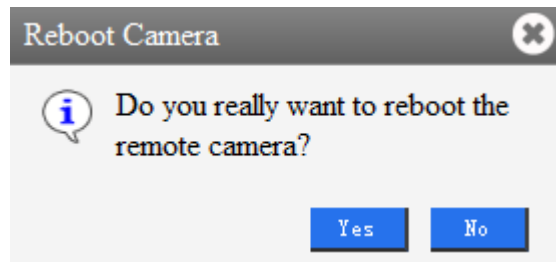


Figure 2.19

## 7.8 Sysc Time

This function is to set the current time to the camera.

## 7.9 OSD (on screen display)

On/Off OSD (on screen display) To set the time watermark on the upper left corner is on or off.

## 7.10 privacy mode

If the privacy mode is on, the screen of real-time viewing will be changed to green, as shown in Figure 2.20.

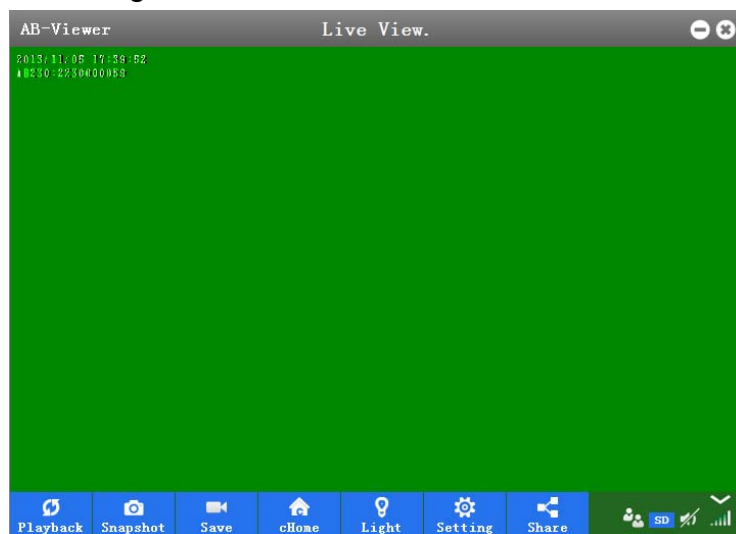


Figure 2.20

## 7.11 frequency


Set frequency (Hertz) is to select the appropriate standard frequency, mostly it may vary by nations. For example, if the camera is used in U.S. The frequency should be set to 60Hz. On the other hand, if it is used in Europe, it should be set to 50Hz.

## 7.12 flip control

Video flip control is to adjust the direction of viewing screen.

# 8. Sharing



Click  to start or stop the Weibo publishing.

On this page you can follow the steps to achieve the functions of Weibo sharing, as shown in Figure 2.21.

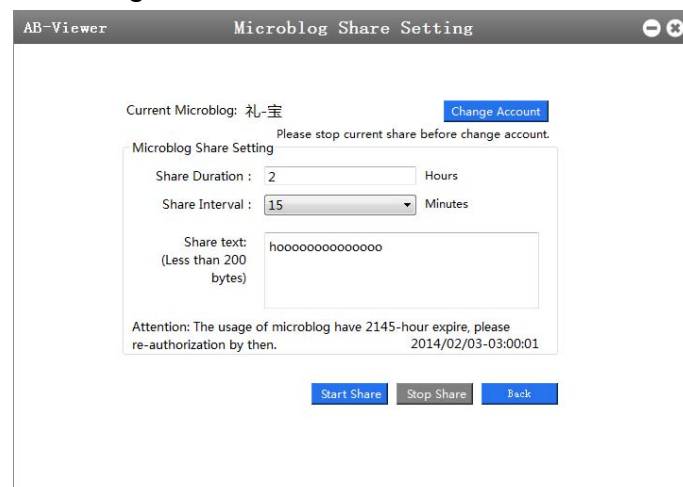




Figure 2.21

## 9. HD/SD

Icon   are placed in the bottom right corner of the interface, they are used to switch the definition of the viewing screen.

Audio on/off



Auto is on.



Auto is off.

### **FCC Warning Statement**

Changes or modifications not expressly approved by the party responsible for compliance could void the user's authority to operate the equipment.

This equipment has been tested and found to comply with the limits for a Class B digital device, pursuant to Part 15 of the FCC Rules. These limits are designed to provide reasonable protection against harmful interference in a residential installation. This equipment generates uses and can radiate radio frequency energy and, if not installed and used in accordance with the instructions, may cause harmful interference to radio communications. However, there is no guarantee that interference will not occur in a particular installation. If this equipment does cause harmful interference to radio or television reception, which can be determined by turning the equipment off and on, the user is encouraged to try to correct the interference by one or more of the following measures:

- - Reorient or relocate the receiving antenna.
- - Increase the separation between the equipment and receiver.
- - Connect the equipment into an outlet on a circuit different from that to which the receiver is connected.
- - Consult the dealer or an experienced radio/TV technician for help.

### **FCC Radiation Exposure Statement**

The antennas used for this transmitter must be installed to provide a separation distance of at least 20 cm from all persons and must not be co - located for operating in conjunction with any other antenna or transmitter.