

SR-2

User's Manual

•Sure-Response•

Thank you for purchasing Sure-Response products. Based on the innovative technology in this ever-changing environment, we have been developed many wireless products that have attract more consumers' attentions. We sincerely appreciate your interest for our products, and we suggest you read the instruction carefully. Your comment will be highly valued. Please read through the manual in order to get familiar with the device and learn the features of this model.

Certificate Approval



Safety Warning

The following safety precautions shall always be observed during operation.

- Do not modify the radio for any reason.
- Use only Sure-Response supplied or approved batteries and chargers.
- To avoid electromagnetic interference and/or compatibility conflicts, turn off your radio in any area where posted notices instruct you to do so. Turn off your radio before boarding an aircraft.
- Any use of a radio must be in accordance with airline regulations or crew instructions.
- Turn off your radio prior to entering any area with explosive and flammable materials.
- Do not use any portable radio that has a damaged antenna. If a damaged antenna comes into contact with your skin, a minor burn can result.
- Do not expose the radio to direct sunlight over a long time, nor place it close to heating source.
- When transmitting with a portable radio, hold the radio in a vertical position with the microphone 3 to 4 centimeters away from your lips. Keep antenna at least 2.5 centimeters away from your body when transmitting.

Packaged Model Contents

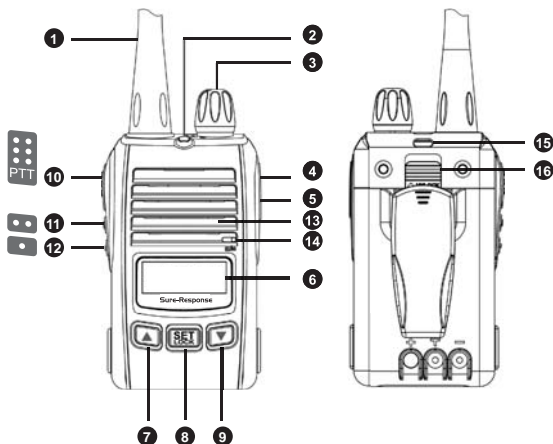
When you receive your radio package, inspect the shipping carton for any signs of damage. Next, remove and check the contents of the packing case to be sure that all items ordered have been included. Contents of the packing case may be different from those listed if optional accessories were ordered.

1. Radio Unit
2. SMA rubber flex antenna
3. Battery
4. Belt Clip
5. Rapid Charger and Transformer
6. User's manual

Contents

Radio Overview · · · · ·	1
LCD Icons · · · · ·	4
Installation of Accessories · · · · ·	5
Operation Guide · · · · ·	8
Function Menu · · · · ·	10
Optional Accessories · · · · ·	12

Radio Overview



- | | |
|---------------------------------|------------------------------|
| 1 Antenna (SMA socket) | 9 Down button |
| 2 LED Indicator | 10 PTT button (Push to talk) |
| 3 Power Switch / Volume Control | 11 P2 function button |
| 4 Data socket (mini USB) | 12 P1 backlight button |
| 5 External Mic. Jack | 13 Speaker |
| 6 LCD display | 14 Mic. |
| 7 Up button | 15 Lanyard hole |
| 8 Set button | 16 Battery Latch |

1. Antenna (SMA socket)	<p>Provide attached SMA rubber flex antenna or other 50Ω impedance antenna.</p> <p>Note: It may cause the damage to your radio if the antenna is connected inappropriately.</p>
2. LED Indicator	<p>LED Indicator turns on red when transmitting.</p> <p>LED Indicator turns on green when receiving signal.</p>
3. Power Switch / Volume Control	<p>Rotate the power switch / volume control knob clockwise to switch power ON. When the click sound of switch and the melody is heard, the transceiver is powered. Adjust volume appropriately.</p> <p>Note: Please be aware that the hearing may be harmed by outburst of sound. Rotate the power switch / volume control knob counterclockwise to switch power OFF. When the click sound of switch is heard, transceiver's power is turned off.</p>
4. Data socket (mini USB)	<p>Connect optional accessories and computer interface.</p>
5. External Mic. Jack	<p>Connect an optional speaker-microphone or headset, if needed.</p> <p>The internal microphone and speaker will not function when either is connected.</p> <p>Note: Turn to the lowest volume if external Mic./speaker is used, then adjust the volume appropriately.</p> <p>Avoid outburst of sound harmful to ears.</p>
6. LCD display	<p>Shows transceiver's status.</p>

7.Up button [▲]	<p>◆Press [▲] to select the channel / CTCSS upward.</p> <p>◆Press and hold [▲] to enable the scanning function and perform the channels upward.</p> <p>◆In function menu, press [▲] to switch the selections upward.</p>
8. Set button [SET]	<p>◆Press [SET] to enter CTCSS adjustment.</p> <p>◆Long press [SET] to enable / disable the keypad lock function.</p> <p>◆In the status of scanning, press [SET] to delete the scanning.</p>
9. Down button [▼]	<p>◆Press [▼] to select the channel / CTCSS downward.</p> <p>◆Press and hold [▼] to enable the scanning function and perform the channels downward.</p> <p>◆In function menu, press [▼] to switch the selections downward.</p>
10. PTT button (Push to talk)	Press and hold this button to talk; release it to listen.
11. P2 function button	Press and hold this button to enter the function menu.
12. P1 function button	<p>◆Short press to turn on / off Backlight.</p> <p>◆Long press to turn off SQL temporarily for monitoring and the radio would receive weak signals.</p>
16. Battery Latch	Push up battery latch to release battery pack.

LCD Icons

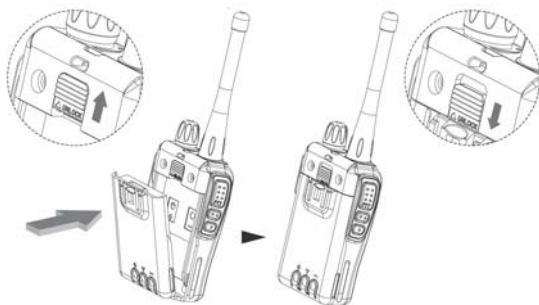


Symbol	Item	Description
	Signal Strength	Shows the signal strength. Four bars indicate the strongest signal.
	CTCSS Tone Indicator Speaker ON/OFF	<p>◆The icon appears and stays on when the CTCSS tone is not set with; the icon disappears on the screen if the channel is set with CTCSS tone.</p> <p>◆The icon blinks when the radio speaker is on and receive signals.</p>
LOW	Tx Power Level	The icon is lit up when the radio is configured to transmit in Low Power, and disappeared when the radio is configured to transmit in High Power.
	Power Saving	Indicates that the power saving function is on.
	Headset	The icon is lit up when the speaker-microphone or headset is connected.
	Keypad Lock	Indicates that all buttons are locked except PTT button.
	Battery Level	Shows the remaining charge of the battery capacity.

Installation of Accessories

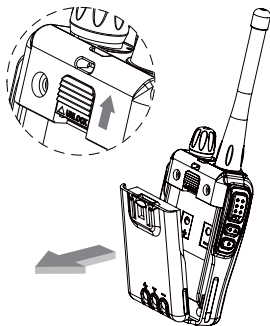
To Attach the Battery

1. Fit the extensions at the bottom of the battery into the slots at the bottom of the radio's body.
2. Press the top part of the battery towards the radio until a click is heard.



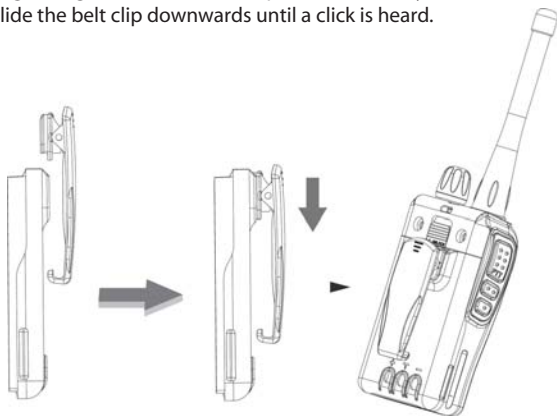
To Remove the Battery

1. Turn off the radio.
2. Push up the battery latch.
3. Pull the top part of the battery away from the radio's body and lift the battery from the radio's body.



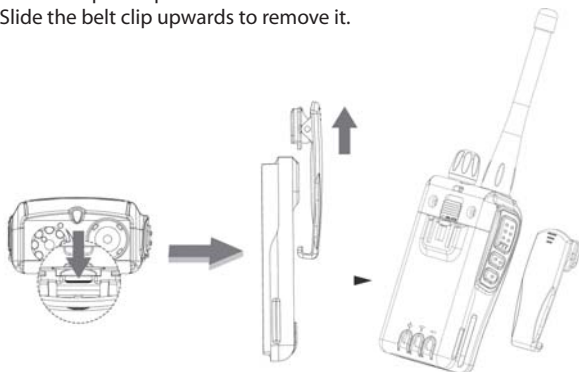
To Attach the Belt Clip

1. Align the grooves of the belt clip with the battery.
2. Slide the belt clip downwards until a click is heard.



To Remove the Belt Clip

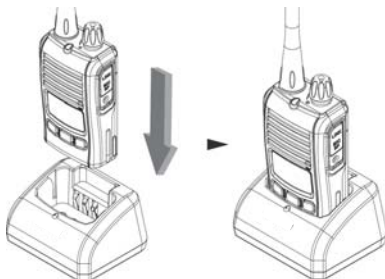
1. Lift belt clip tab up.
2. Slide the belt clip upwards to remove it.



Battery Charging

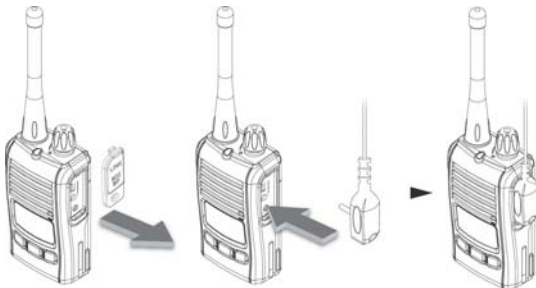
Place the radio with battery attached or the spare battery alone in the rapid charger for charging. Following is LED instruction.

1. Steady Green: Charger has successfully powered up.
2. Steady Red: Battery is in rapid charge mode.
3. Blinking Green: Battery has completed rapid charge.
4. Blinking Red: Battery is unchargeable or not making proper contact.



Use of external MIC / Speaker

1. Remove accessory jack cover
2. Insert accessory jack
3. Fix accessory with the screws



Note: Rotate the Power Switch / Volume knob slowly to avoid outburst of sound harmful to ears.

Operation Guide

Before operating the radio, make sure the attached battery is fully charged. When the battery level is very low, you need to recharge it before you can continue to use your radio (The radio has a battery voltage icon to show the battery status on LCD screen).

Power On / Off

- Rotate the power switch / volume control knob clockwise to switch power ON. When the click sound of switch and the melody is heard, the radio is powered on.
- Rotate the Power switch / volume control knob counterclockwise to switch power OFF. When the click sound of switch is heard, transceiver's power is turned off.

Note: avoid outburst of sound harmful to ears.

Receiving / Transmitting

- Before press and hold the PTT button, please check if the LED indicator turns on green or not (Green stands for channel busy).
- Press PTT button and speak clearly with your mouth about 5-10cm away from the microphone. The LED indicator turns on red during transmission.
- Release PTT button when you finish speaking and receive signals.
- During receiving, LED indicator turns on green.

Adjusting Volume

- Rotate the Power / Volume control knob clockwise to increase volume.
- Rotate the Power / Volume knob counterclockwise to decreases volume.
- Rotate the power switch/volume knob slowly to avoid outburst of sound harmful to ears.

Channel Adjustment

Press [▲] [▼] to select the assigned channel.

Channel Scan

Press and hold [▲] [▼] to start scanning for the channel. When scanning is in operation, press [SET] to end the scanning.

CTCSS Tone Adjustment

- Press [SET] to switch the function of channel adjustment and CTCSS Tone adjustment.
- Press [▲] [▼] to select the assigned tone on channel.
- There are 51 standard codes of CTCSS as below table. (Factory default is OFF)

1	67.0	11	97.4	21	136.5	31	192.8	41	159.8
2	71.9	12	100.0	22	141.3	32	203.5	42	165.5
3	74.4	13	103.5	23	146.2	33	210.7	43	171.3
4	77.0	14	107.2	24	151.4	34	218.1	44	177.3
5	79.7	15	110.9	25	156.7	35	225.7	45	183.5
6	82.5	16	114.8	26	162.2	36	233.6	46	189.9
7	85.4	17	118.8	27	167.9	37	241.8	47	196.6
8	88.5	18	123.0	28	173.8	38	250.3	48	199.5
9	91.5	19	127.3	29	179.9	39	69.3	49	206.5
10	94.8	20	131.8	30	186.2	40	62.5	50	229.1
								51	254.1

Function Menu

Press and hold P2 button to enter the function menu. Press [▲] [▼] to select the function settings.

Menu Items	Description	Factory Default	Option
SQL	RF Squelch	Level 3	Level 0~ Level 7
SOUND	Sound Effect	ON	ON / OFF
APO	Auto-power-off	OFF	OFF / 30 / 60 / 120 mins
TOT	Transmission Timeout	OFF	OFF / 30 / 60 / 90 / 180 / 360sec
PSAVE	Power Saving mode	1:2	OFF / 1:1 / 1:2 / 1:3 / 1:4
MIC-G	Mic. Gain	L	VL / L / H
VOX	Voice-Activate System	OFF	OFF / Level1~ Level 9
RESET	Restore to factory setting	NO	NO / YES

SQL: Squelch Level

Adjust radio's squelch level between Level 0 ~ Level 7.

SOUND: Sound Effect

Turn on / off all sound effect (including power-on melody, key beep, warning beep...etc.).

APO: Automatically Power Off

There are OFF / 30 / 60 / 120 mins for selection. While one of them is selected, the radio will automatically turn the power off when times out if none of the button is operated.

The radio will send out a reminder melody and LCD screen shows "APO" from the last 5 mins before turning off.

TOT: Transmission Timeout

There are OFF / 30 / 60 / 90 / 180 / 360 secs in selection. While one of them is selected, push and hold PTT if continuous talk before the time out 10 sec. and radio will send out a beep warning sound. At the same time, LCD screen shows "TOT", the radio will stop transmission at time-out and there are beeps sounds continuously until PTT is released.

PSAVE: Power Saving

Turn on power saving mode could extend radio operation time. Power saving mode can be selected in OFF/1:1/1:2/1:3/1:4 level. (1:4 is the one saving most power)

MIC-G: Microphone Gain

There are Very Low / Low / High gains in selection. Please choose "High" when you need to speak softly and set as "Very Low" when the environment with loud noise (such as riding a motorcycle).

VOX: Voice-Activate System

VOX is a speech control giving the possibility to transmit without using the radio PTT. The VOX sensitivity can be set in OFF and 9 different sound levels.

1 stands for the highest sensitivity; 9 stands for the lowest. That means, the smaller of the setting value means the better ability to transmit the signals.

(Factory setting is OFF)

RESET: Restore to default setting

Press [▲] [▼] button to select "YES" and then press the set button to return to default factory setting. The radio will automatically turn off and restart again, at that time; all the functions set on the radio will be restored to the default setting.

Optional Accessories



Li-ion Battery
2000mAh / 3.7V
1100mAh / 7.4V



SRA210B
SR-2 Remote Earphone-Ear Hook Type



SRA210C
SR-2 Remote Earphone-Air Tube Type



SRA210D
SR-2 Remote Earphone-D-Ring Type



WI CR01
USB Programmable Cable

Note: Pictures are for reference only and may vary from actual product. Product function shall remain the same. The above listed items are the common optional accessories for your radio. To order other accessories, please contact your local dealer.

Sure-Response endeavors to achieve the accuracy and completeness of this manual, but no warranty of accuracy or reliability is given. All the above specifications and design are subject to change without notice due to continuous development. No part of this manual may be copied, reproduced, translated, stored in a retrievable system, distributed, or transmitted in any form or by any means, electronic or mechanical, for any purpose without the express written permission of Sure-Response.

