

深圳市亿圣邦科技有限公司
样品承认书

SPECIFICATION FOR APPROVAL

公 司 名 称 (客户填写) : 东莞市艾普达科技有限公司
物 料 代 码 (客户填写) :
规 格 型 号 (客户填写) : F1544P0BP
承 认 日 期 (客户填写) :
供 应 商 名 称 (SLK 填写) : 深圳市亿圣邦科技有限公司
供 应 商 规 格 型 号 (SLK 填写) : WIFI:SLK-APD-3212A7-R-185I-G

承 认 签 章					
供 应 商 承 认 (SLK 填写栏)			东莞市艾普达科技有限公司		
工 程 师	品 质	结 构	工 程 师	审 核	批 准
罗涛	陈揭兴	刘才亮			
批准			盖章签署		
日 期	2024-2-1		日 期		
批示: <input type="checkbox"/> 接受 <input type="checkbox"/> 有条件接受					
备注 (客户填写) :					

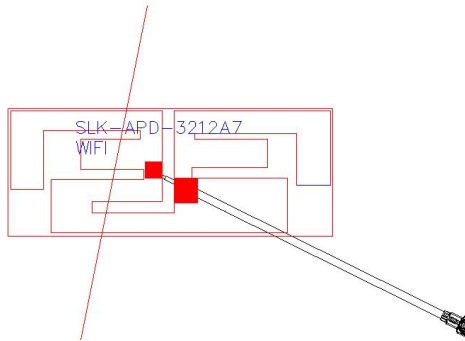
供应商名称: 深圳市亿圣邦科技有限公司
供应商地址: 深圳市宝安区深圳前湾硬科技产业园 C 栋 101
电 话: 18025305599 电 话: 18666299104

WIFI Antenna (3212A7)

1.Explanation of Product number :

S L K - A P D - 3 2 1 2 A 7 - R - 1 8 5 I - G

1 2 3 4 5



Product Code:

(1) Customer:

APD:爱普达

(2) Project:

3212A7:SLK-APD-3212A7 (WIFI antenna)

(3) Welding Position

R: Right

(4) Cable Length:

185I: 185*1.13MM一代端子

(5)Cable Color

G: Grey

2. Features

- *Stable and reliable in performances
- *Compact size
- *RoHS compliance

3. Applications

- * IEEE802.11 (a/b/g/n)
- * Hand-held devices when WIFI (802.11a/b/g/n) functions are needed

4. Description

Holy bond's FPC antenna series are specially designed for WIFI (802.11 a/b/g/n) applications. Based on Holy bond's proprietary design and processes, this FPC antenna has excellent stability and sensitivity to consistently provide high signal reception efficiency.

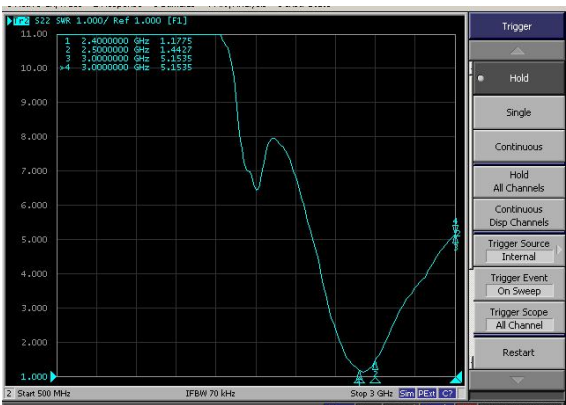
5. Electrical Specifications

5-1

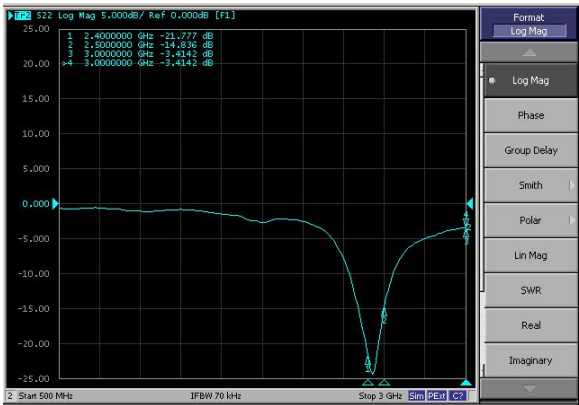
Characteristics	Specifications	Unit
Outline Dimensions	32.29x12.68	mm
Center Frequency	2.4-2.5	GHz
Bandwidth(under-10dB return loss)	130min	MHz
VSWR	3max	

5.2

VSWR

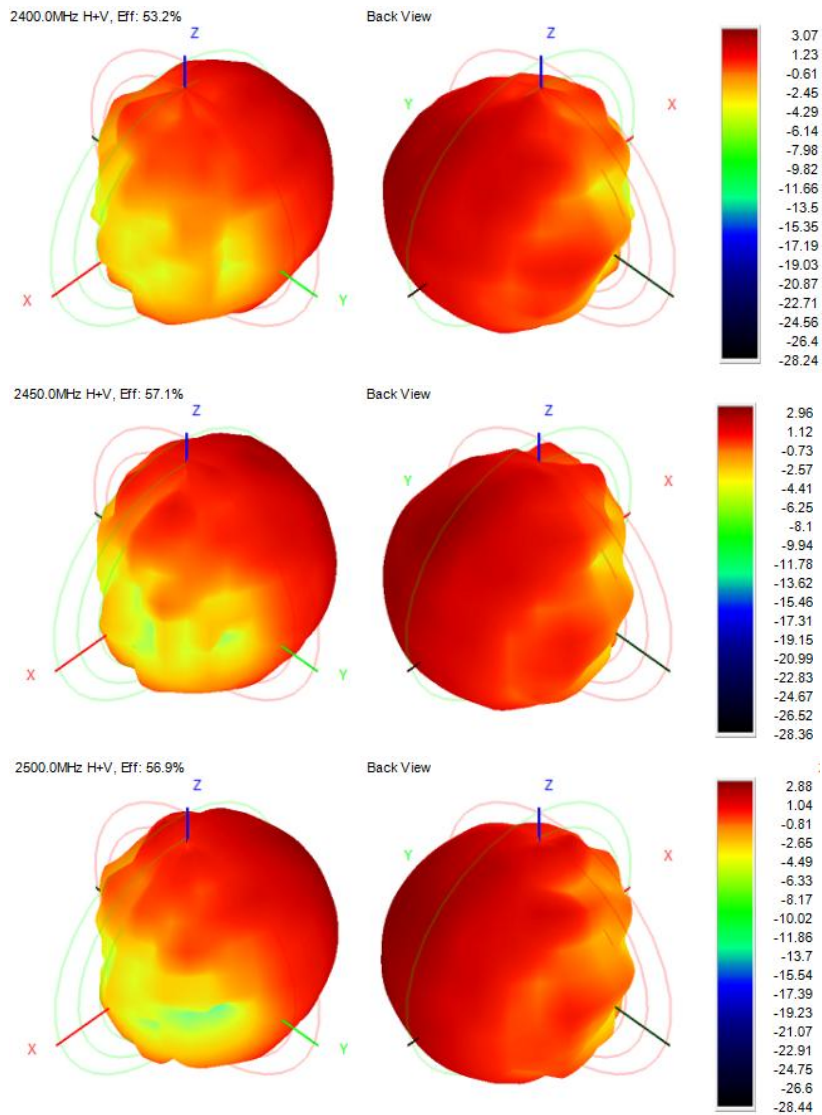


S11

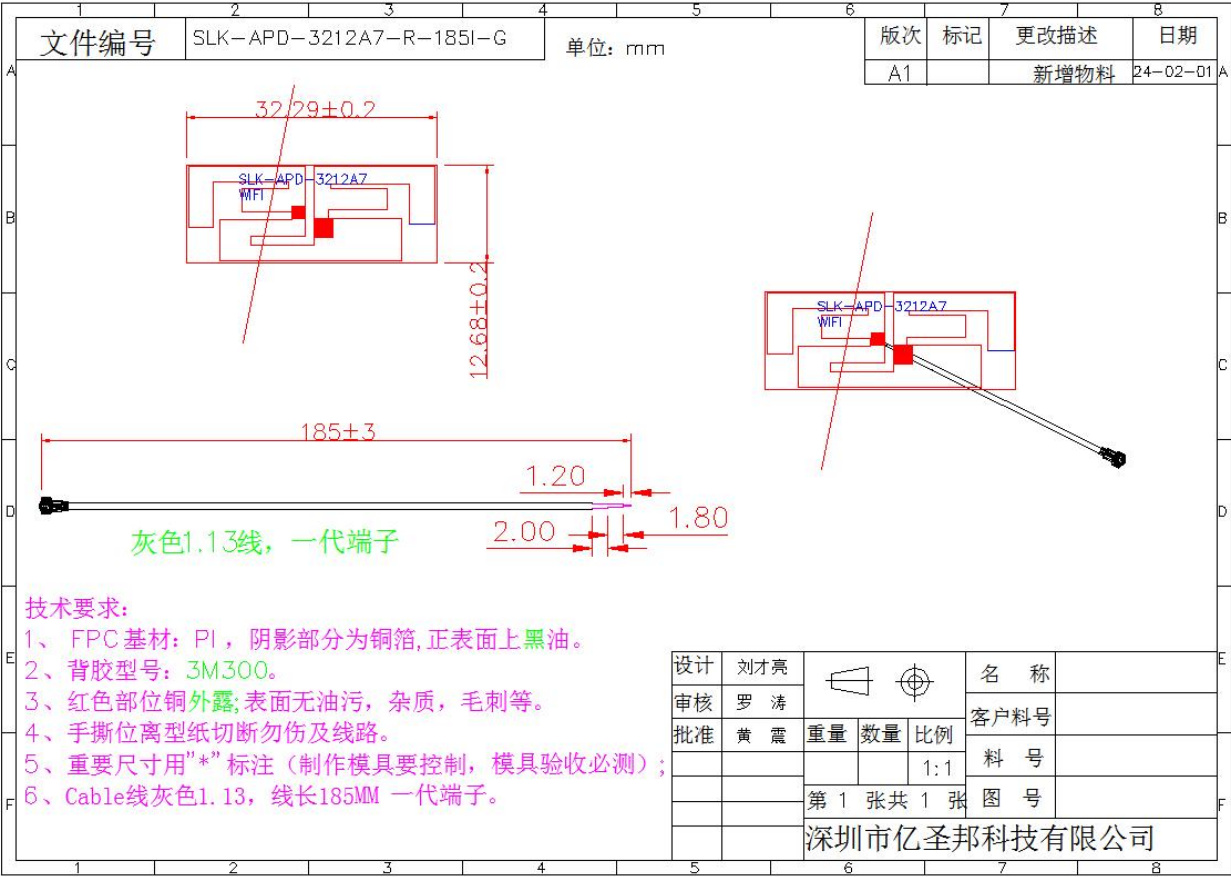


5-3.WIFI Antenna Gain/Efficiency/Radiation Pattern of 3D

Frequency (MHz)	Efficiency (dBi)	Gain (dBi)	Efficiency (%)
2400.0	-2.74	3.07	53.19
2410.0	-2.53	3.39	55.90
2420.0	-2.54	3.17	55.71
2430.0	-2.53	2.85	55.86
2440.0	-2.47	2.92	56.67
2450.0	-2.44	2.96	57.06
2460.0	-2.51	2.76	56.16
2470.0	-2.45	3.02	56.89
2480.0	-2.39	2.94	57.69
2490.0	-2.41	2.84	57.46
2500.0	-2.45	2.88	56.85



6.Antenna Dimensions (unit: mm)



7. Antenna Picture

