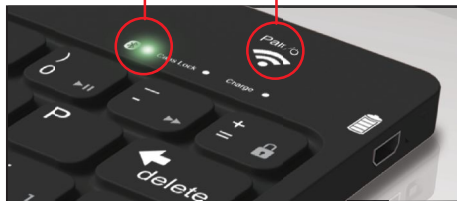


Using the wireless Bluetooth® keyboard

Power Indicator Light Pair Button



Turning the Keyboard ON/OFF

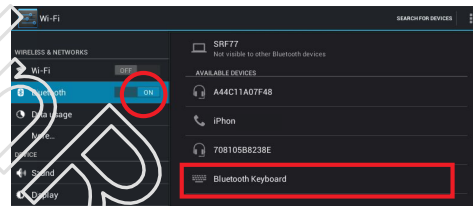
1. To turn ON, press and HOLD the [Pair] button for 2 full seconds. The Bluetooth light will blink once, then the Caps Lock light will blink once.
2. To turn OFF, press and HOLD the [Pair] button for 3 full seconds. The Bluetooth light will blink 3 times and the Keyboard will turn OFF.

Blinking Pair button



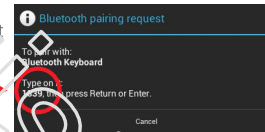
Pairing the Keyboard to a Bluetooth enabled tablet

1. Make sure the Bluetooth Keyboard is turned OFF.
2. Press and HOLD the [Pair] button for 6 full seconds. The Bluetooth Keyboard will turn ON and the [Bluetooth] light will flash continuously - the Keyboard is now in pairing mode.
3. Keep the Keyboard and tablet (or other Bluetooth device) within 2 feet of each other during the pairing process.
4. Set your tablet (or other Bluetooth device) to search for Bluetooth devices.

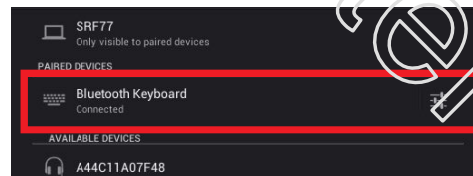


5. When the Bluetooth device finds the Keyboard, select "Bluetooth Keyboard" from the list.

6. Using the Keyboard, type the password shown on the tablet (or device) and press enter.



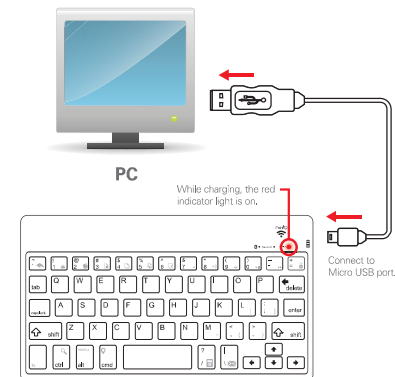
7. After pairing successfully with the tablet, "Bluetooth Keyboard Connected" is displayed. To disconnect, turn the Keyboard OFF.



NOTE: When turned ON, the Keyboard will automatically connect to the last tablet (or other Bluetooth device) that it was paired with. To switch to another device, turn OFF the tablet or device and restart the pairing process with the new device.

Charging the keyboard

1. Connect the small end of the included Micro USB Cable to the USB charging port on the side of the Keyboard.
2. Connect the large end of the included Micro USB cable to an available USB port on your computer (or other devices made for USB charging).



3. The LED Charge Indicator Light on the Keyboard will light up RED when charging.
4. The LED Charge Indicator Light on the Keyboard will turn OFF when finished charging.

FCC WARNING

This device complies with Part 15 of the FCC Rules. Operation is subject to the following two conditions:

- (1) This device may not cause harmful interference, and
- (2) this device must accept any interference received, including interference that may cause undesired operation.

NOTE 1: Any changes or modifications to this unit not expressly approved by the party responsible for compliance could void the user's authority to operate the equipment.