

User's Guide

Product Name: Tablet PC

Model No.: Tablet PC

Manufacturer: SHENZHEN WINDREAM COMPANY LIMITED

Thanks:

Dear User

Thank you for purchasing our product.

These operational guidelines for the user, to ensure you a quick and convenient to use, read the instructions carefully before use.

Contents:

1. Notes
2. Random Accessories
3. Hardware Specifications
4. Knowledge products
5. Startup and shutdown
6. Desktop
7. Button
8. System Settings
 - * Time and date settings
 - * Screen brightness
 - * Standby screen
 - * WIFI Wireless Connection
9. Install, remove and run the application
10. Touch calibration
11. Music
12. Video
13. Picture
14. Network
15. Recording
16. Mail Client
17. Wallpaper
18. External equipment
 - * USB connection
 - * OTG use
 - * Keyboard and mouse
19. Firmware upgrade
23. Frequently Asked Questions Treatment

Note:

- * This product is a high precision electronic products, do not disassemble.
- * Avoid strong beat, the collision of the product.
- * Avoid using this product the following conditions: high and low temperature, moisture, dust, magnetic fields strong and long-term exposure to sunlight.
- * Please use a wet cotton cloth wrung gently wipe the product shell, do not use other chemical cleaning solution. This product should not be dripping or splashing water, so should not be placed near the product category, such as glass filled with a liquid items.
- * Too long, use the headphone volume is too large may cause permanent hearing damage.
- * Do not cross the road, driving motor vehicle or bicycle use headphones to avoid traffic accidents.
- * Please only use permitted batteries, chargers and accessories, use any other type of products would violate the warranty regulations and may be dangerous.
- * Please follow the relevant local environmental regulations to deal with obsolete machines and accessories.
- * This product is in the course of any questions, please contact your local dealer or directly with the company's customer service center.
- * For those because the product is damaged, repair or other causes of memory loss wipe coating, the Company assumes no responsibility, please follow the user manual for standard operation, and timely backups.

Random accessories:

(Related diagram)

V7 Host

5V 2.0A DC charger

Quick Start Guide

Warranty Card

USB cable

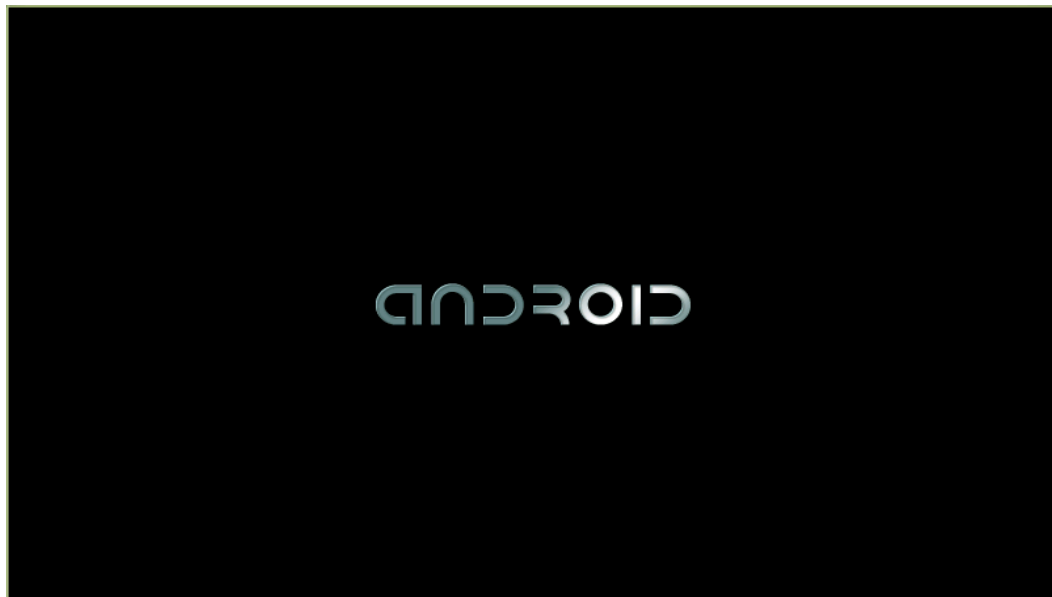
Hardware rules:

Hardware parameters		
Processor	Embedded 1GHz ARM A13 32-bit processor core	
Memory	DDR3 512M	
Storage	Built-in flash memory 4GB, Support external TF card	
Wireless	802.11(b/g/n)	
USB	USB2.0 high speed interface and USB2.0 OTG	
Audio	3.5mm headphone jack High-quality stereo loud speaker Built-in microphone Headset maximum output power of 40mW Frequency response: 20Hz-20KHz SNR: greater than 90db	
Screen	Size	7 inch
	Resolution	800*480pixels
	Color	16 M color
	Operating	Capacitor Touch Screen Single
Other	Size	
	Color	Black / White / Silver
	Weight	
	Battery	Built-in lithium polymer battery 2800mAH
Annex	Power adapter (DC V / A) Certificate, quick guide and warranty card	

Startup and shutdown

*Boot: Press and hold the power button, the green LED indicator light, the system will enter the startup process, as follows:

Boot Logo startup ...

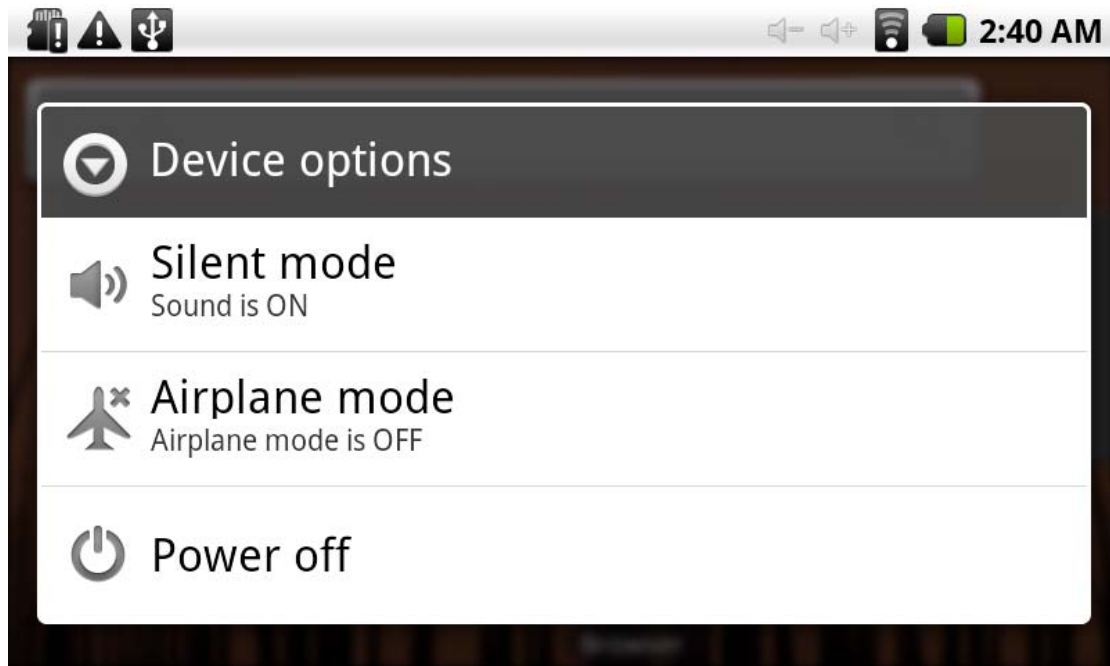


System has been started, are entering the Android system:



The system enters the default home interface

*Shutdown: Press the power button, pop-up device options, select Shut Down, as follows:



Click OK, you can safely shut down.



*Sleep: the machine under normal operating conditions, Short press the power button, Into hibernation, Now, Screen will close. Short press the power button again, Be able to resume normal mode. ☒ When the time being use this MID can enable this feature when, To reduce power consumption.


Desktop:

System after the completion of normal start, Desktop can see Android2.3(The figure) The default desktop by the: Status Bar、Quick Search Bar、Main menu labels and a number of shortcut icons form.



The status bar to display the current system of network status, Battery, Time information. Quick search box for Web search by typing key words. Middle right of the screen the main menu tab stop, Click or drag to the main menu bar to start the default. Bottom of the screen displaying the browser shortcut icon.

Optimization of the status bar results, Increase the volume of two icons  ,

Volume reduction  . Click to adjust the volume. Equivalent to Volume + and Volume – features.

Button:

Android system uses in the course of the keys:

Volume keys: the task bar Volume +, Volume-achieve changes in the volume.

Power key: Press and switch machines. Short press to enter or leave the hibernation.

Menu button: Displays the current form of the menu items (if any).

Home button: Back to the main interface or choose.

Return: Return on an interface.

Main Menu Operation:

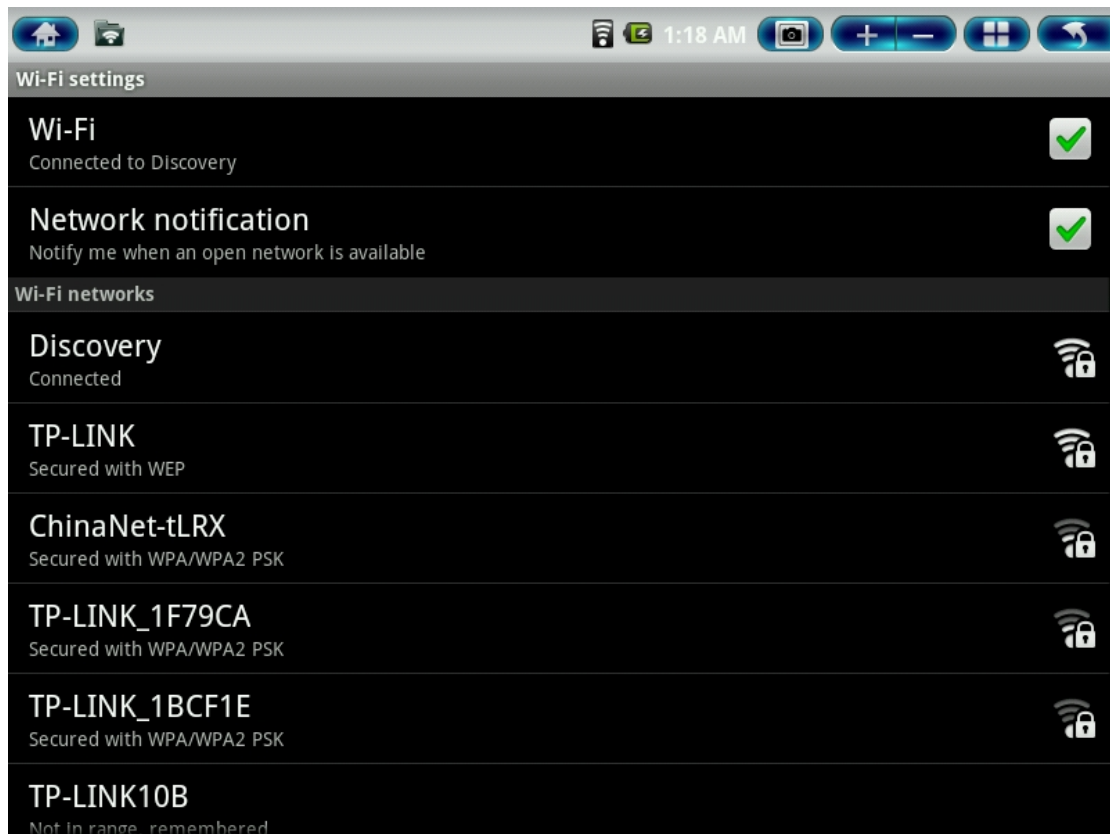
Click or drag the main interface of the main menu tab, the main menu will be from right to left (or bottom-first, last), and is as follows:



In the main menu, the system can be set to run existing applications, install a new application, start the touch calibration, music player, video player, web browsing, games and other operations.

System Settings:

Click the main menu interface in the "Settings" icon, you can open the system settings interface, as shown below:



Select the appropriate operation of the relevant items, such as:

- * Wireless and network
 - * Sound and display
 - * Date and time settings
 - * About Equipment
- Etc.

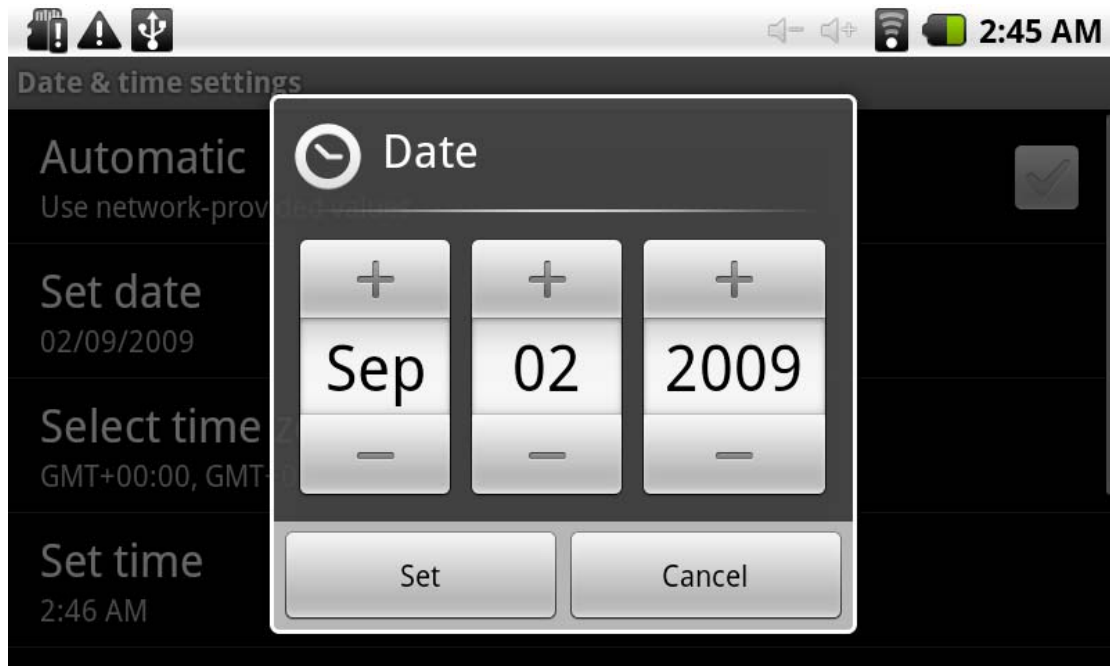
*Date and time settings:

Set interface options "time and date settings options" to enter the date and time Settings interface:

Can choose to automatically: use the Network Time.

Can also select to set the date, select the time zone, set the time, time format, date format and other information.

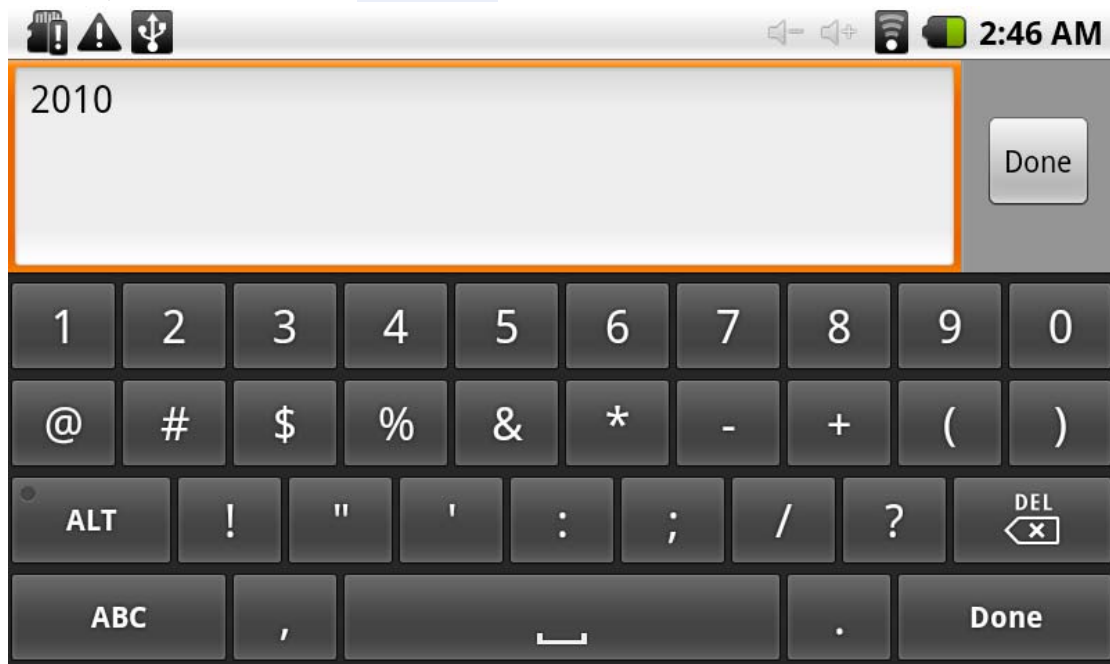
For example, choose to set the date, as follows:



Select +: that the increase of 1 unit,

Select -: that the reduction of 1 unit.

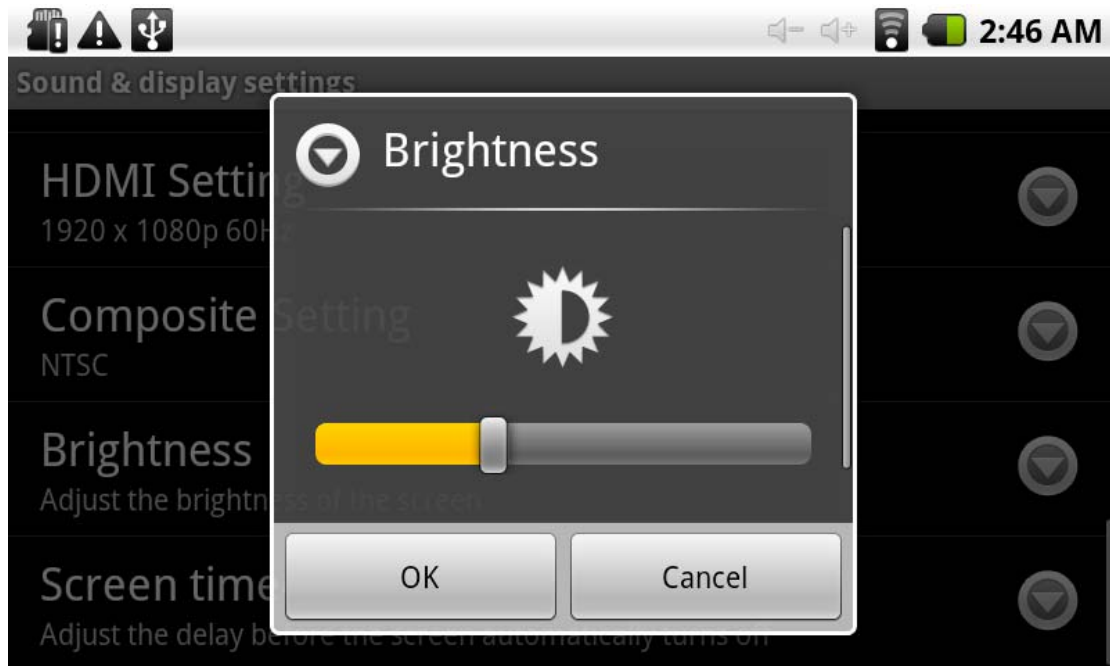
Also can choose the number, enter the input mode. Directly entering the desired number, then select Done. As follows:



Select "Settings." If you enter the number of legitimate, then the operation is successful, the system will set the option to use the new.

*Screen brightness:

In the setup interface choose "sound and display settings" to enter the sound and display settings interface, scroll down section, select "Brightness", there are interface:

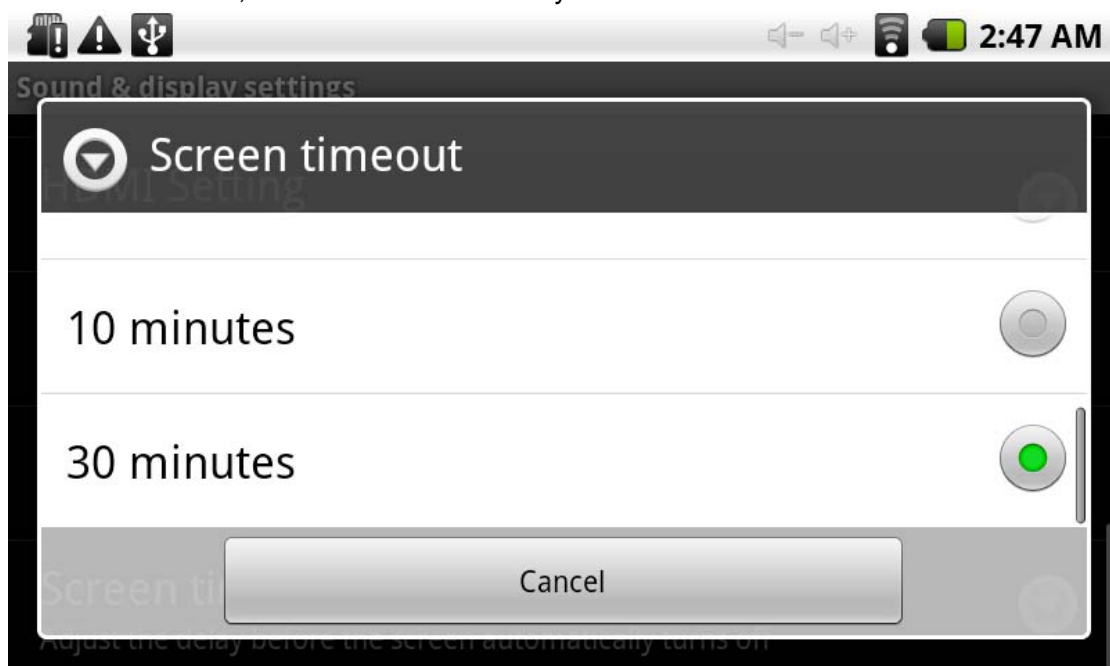


*Standby screen:

Standby screen: the screen automatically locks the delay before.

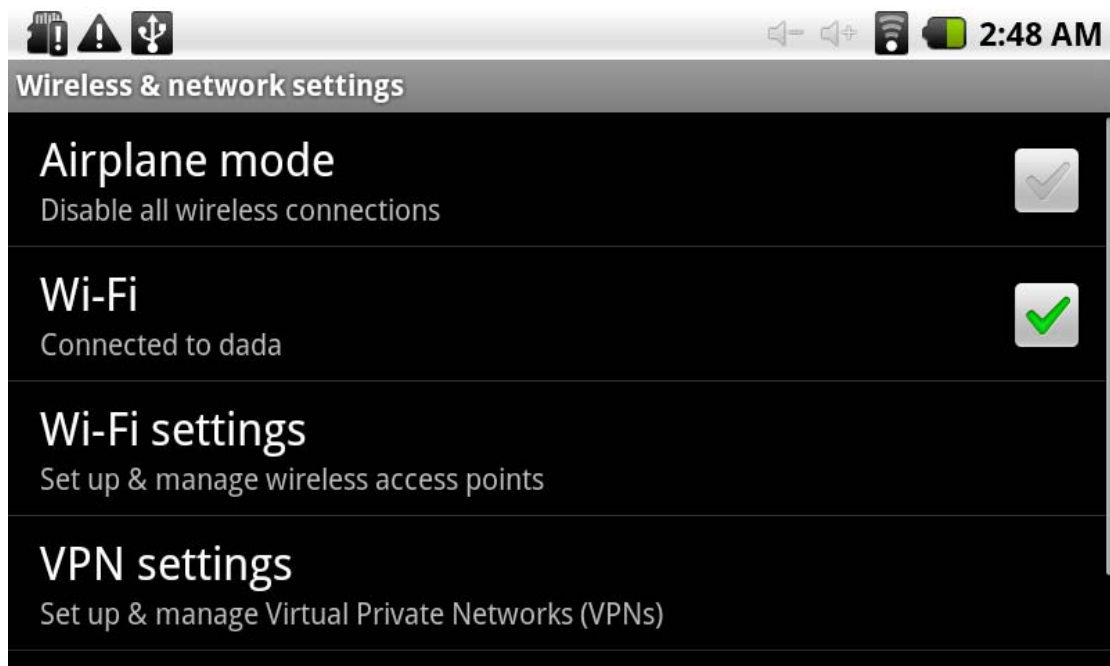
In the setup interface choose "sound and display settings" to enter the sound and display settings interface, scroll down section, select the "standby screen" interface appears, as follows:

Note: In the video, the screen auto-standby function does not work

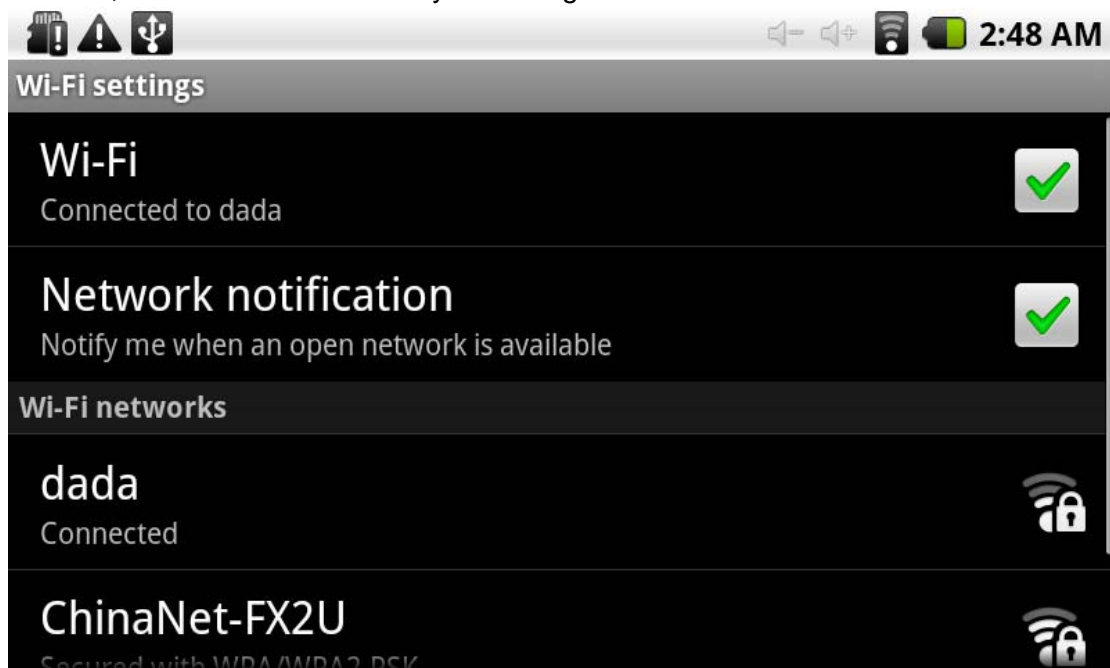


*WIFI Wireless Connection:

Click the main menu "Settings" icon, go to "System Settings" screen, click on "Wireless and network" into the "Wireless and network" setup interface. Click the "WIFI" section to quickly open the WIFI feature, click on "WIFI settings" column enter "WIFI set interface" as shown below:



In the "WIFI settings" interface (above), click on the WIFI column also can open and close the WIFI feature, click on the "Network Notice"lists MID701 search to the wireless router, wireless router, click the search name will pop up settings window , please follow the prompts to complete the WIFI network links. Some encrypted network, need to enter a valid key. Link diagram below:





Install, uninstall, run the application

*Installation: Android install the application there are a variety of ways, such as through USB install, install third-party program aid. Here we introduce assisted by APK installer to install.

Click the main menu interface "APK installer" can enter the "application installation and management" interface. As shown below:



Click "Install Installer" install options into the APK interface. In the choice of interface and file browse the directory, find your path to the file storage APK, what you want to APK file into the application installation interface, click on Install to automatically

install the application.

After installation is complete, there will be "open" or "complete" message. Click "Open" to open to install the program directly. Click "Finish" then exit the installation interface. Generally installed in the main menu program to create the corresponding icon. Directly in the main menu you can click on the icon to open the appropriate application.

Users can "Andrews market" online installation, or download via the computer, or online through the machine built-in browser to download and install.

***Uninstall applications:** You can use the appropriate third-party software management tools or applications that use the Android comes with management software

Select "Settings" / "Application" / "Management Applications", select the appropriate application has been installed, to view program information, the uninstall program and other operations.

Touch Calibration

When you first start the system by default called touch calibration procedures. Users can also in the main menu, select "touch calibration", enter the touch calibration procedures.

Follow the prompts to complete the calibration operation, if successful touch calibration, the system prompts and automatically exit the touch calibration interface.

As follows:



Carefully press and briefly hold stylus on the center of the target.

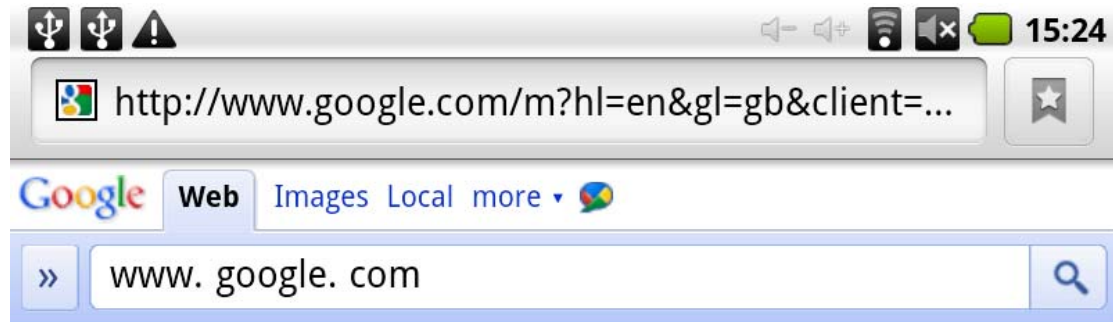
Repeat as the target moves around the screen

Press Return or Home Key to cancel

Network:

Web browsing:

When the connected network, open the Web browser enter the URL, you can quickly browse the Web; or through the main desktop search bar enter the URL, open the web page.



Did you mean: www.google.com

Google

Enables users to search the Web, Usenet, and images. Features include PageRank, caching and translation of results, and an option ...

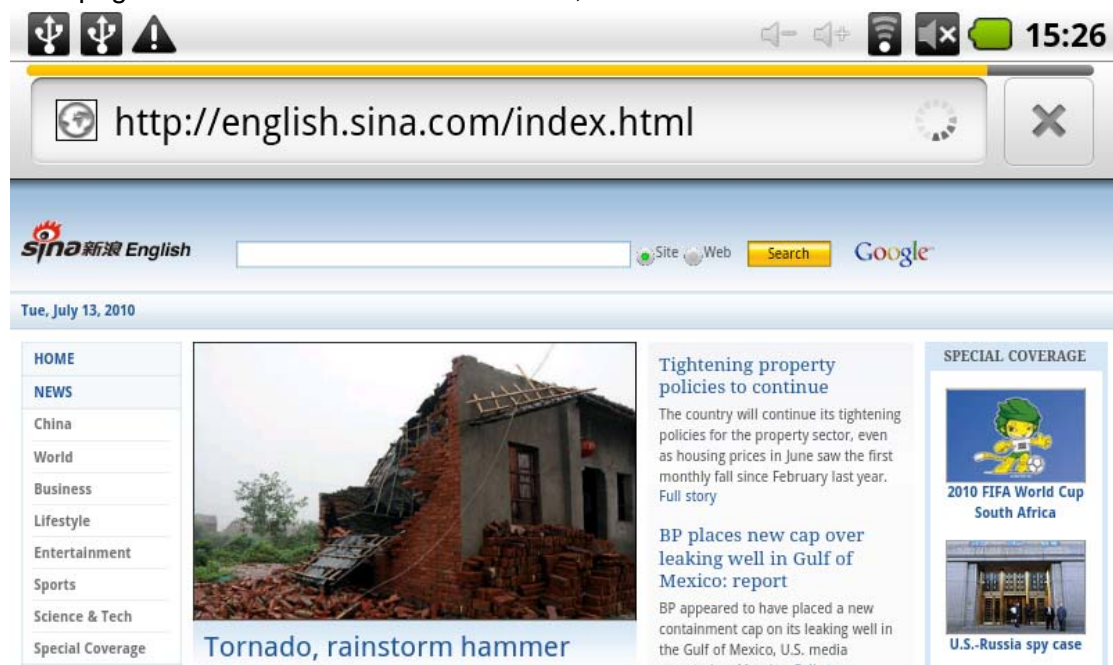
[+ Show stock quote for GOOG](#)

www.google.com/ - [Options](#) ▼

[Gmail](#)

[Google Accounts : Problems signing ...](#)

Free page can use the zoom controls zoom, as shown:



Online video:

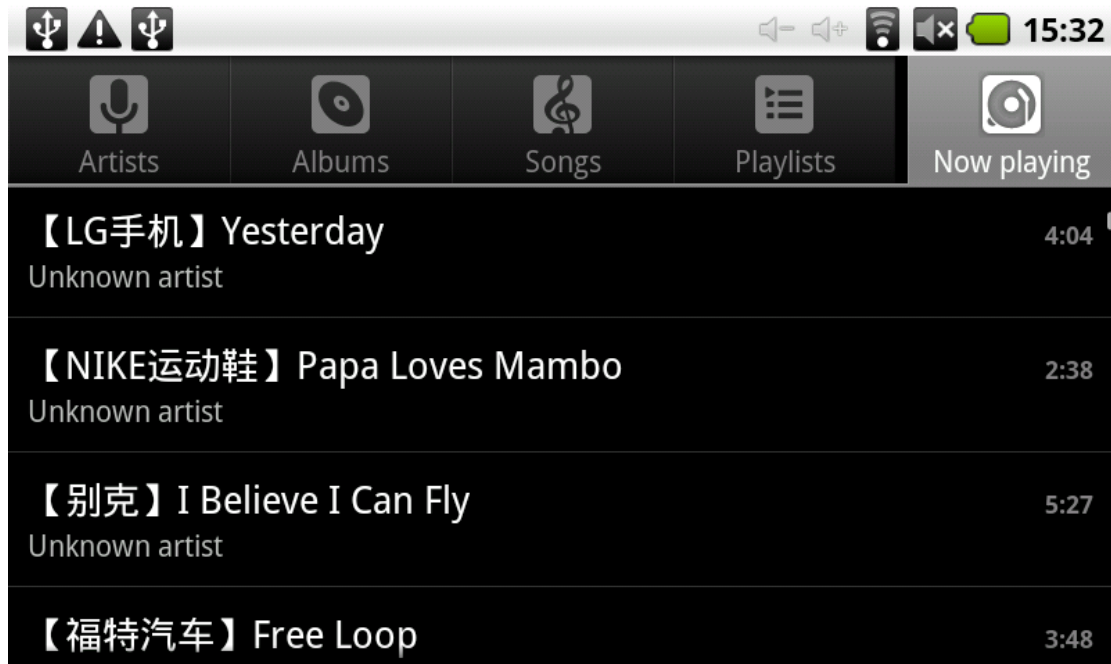
Through "Andrews market" or other means to download online video player software, online TV player, online music software, then install to this machine. Open the software installed, you can watch online video or online TV, listening to online radio

stations.

Users can also download other third-party Web applications, including web browsing, video playback, Web client, instant messaging software, etc.

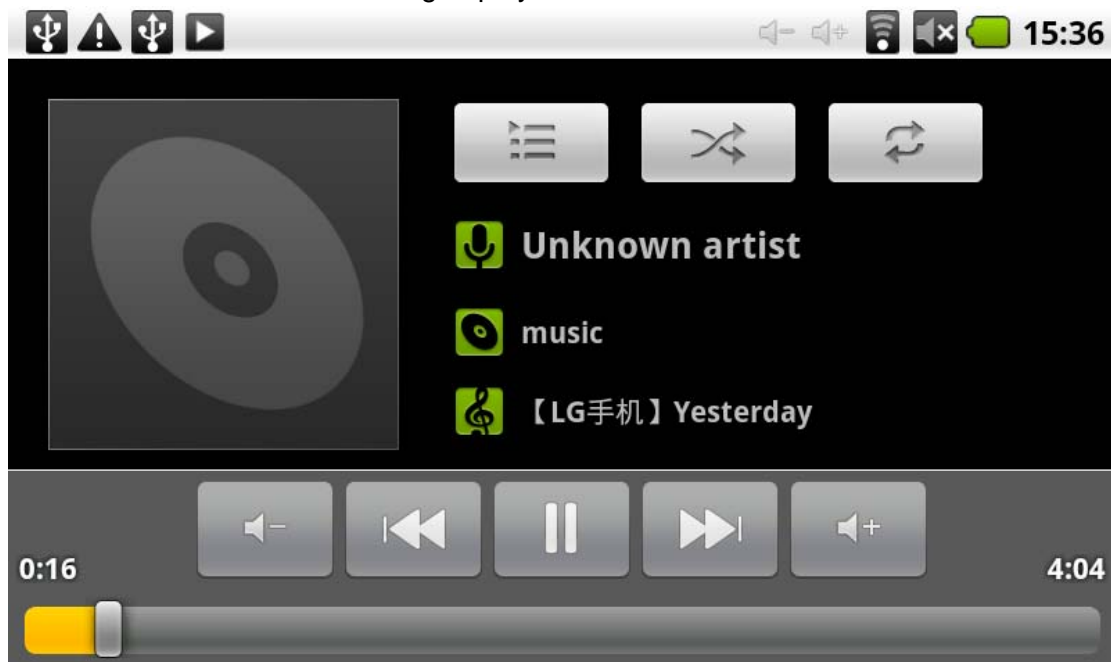
Music:

Click the main menu in the "music" icon, you can enter the music player interface. Here lists the system default user data area of all audio files. As shown below:



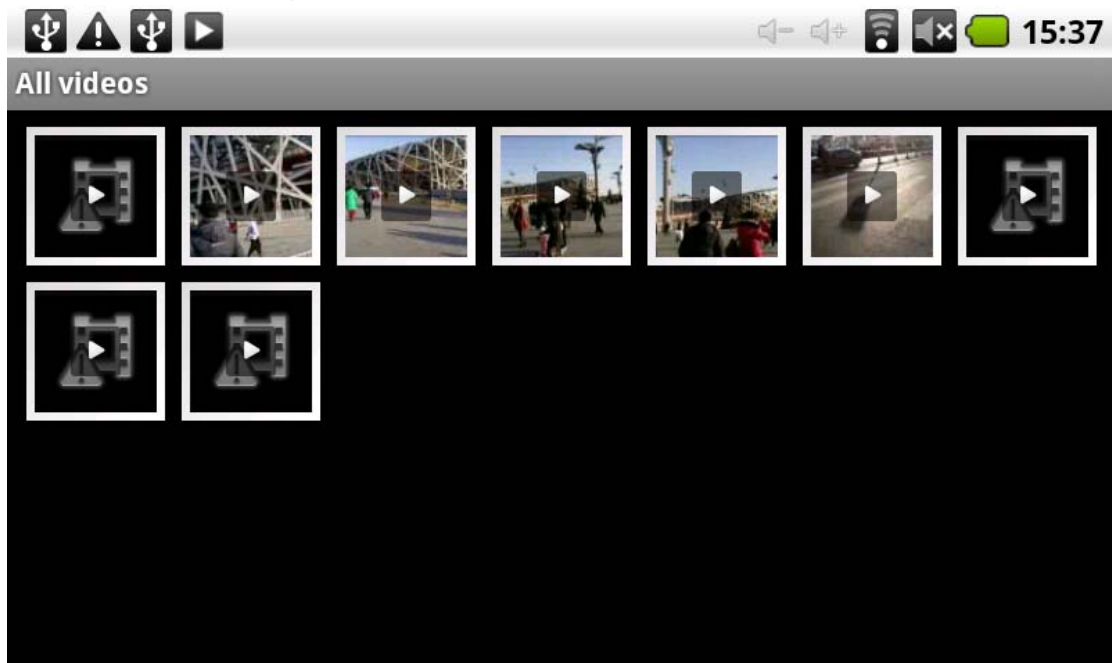
We can spread through the USB audio files synchronized manner, or by inserting the SD card with audio files were audio files, you can also download the audio files via the network.

Select the appropriate tab key, you can see for example "Artist", "album", "songs" and other interfaces. Select song to play.



Video:

Click the main menu in the "gallery" into the "gallery" the main interface, there will list all the video files and picture files. As shown below:

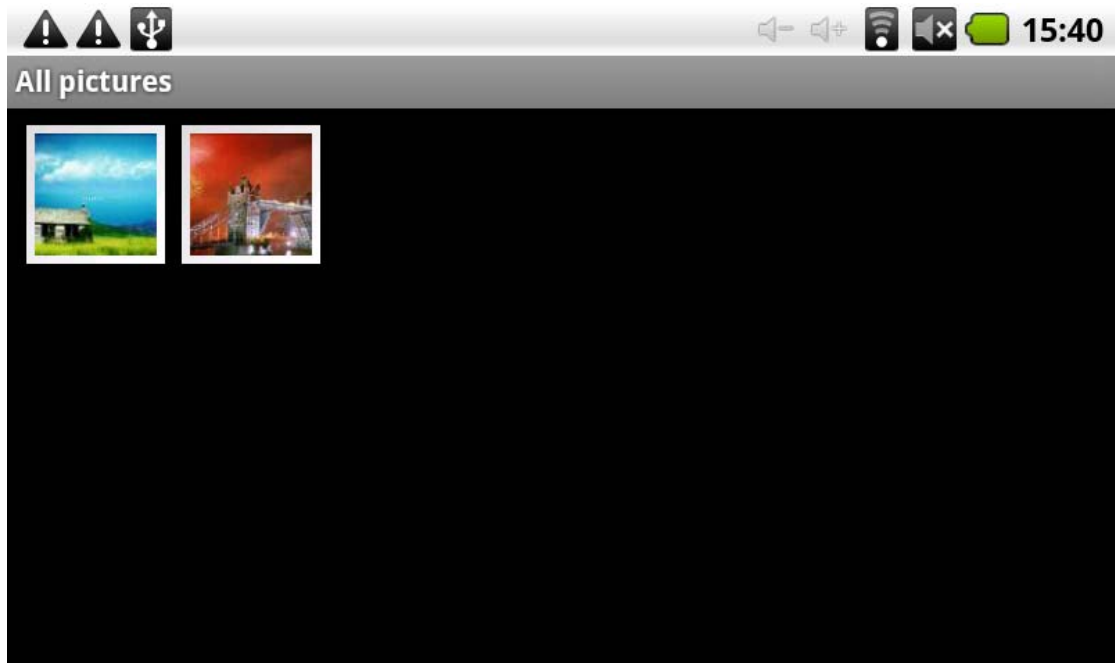


Select video file into the video player interface, as shown below. Can select "Play", "stop", "Volume +", "Volume -", "fast forward", "rewind", "progress bar" and control keys to control playback of the progress.



Photo Browse:

Click the main menu in the "gallery" into the "gallery" the main interface, there will list all the picture files and video files. As shown below:



Select a picture file, enter the picture playback interface, as shown below. Can select "Zoom", "narrow" "sharing", "Previous" "Next," "set" and "delete" operation.

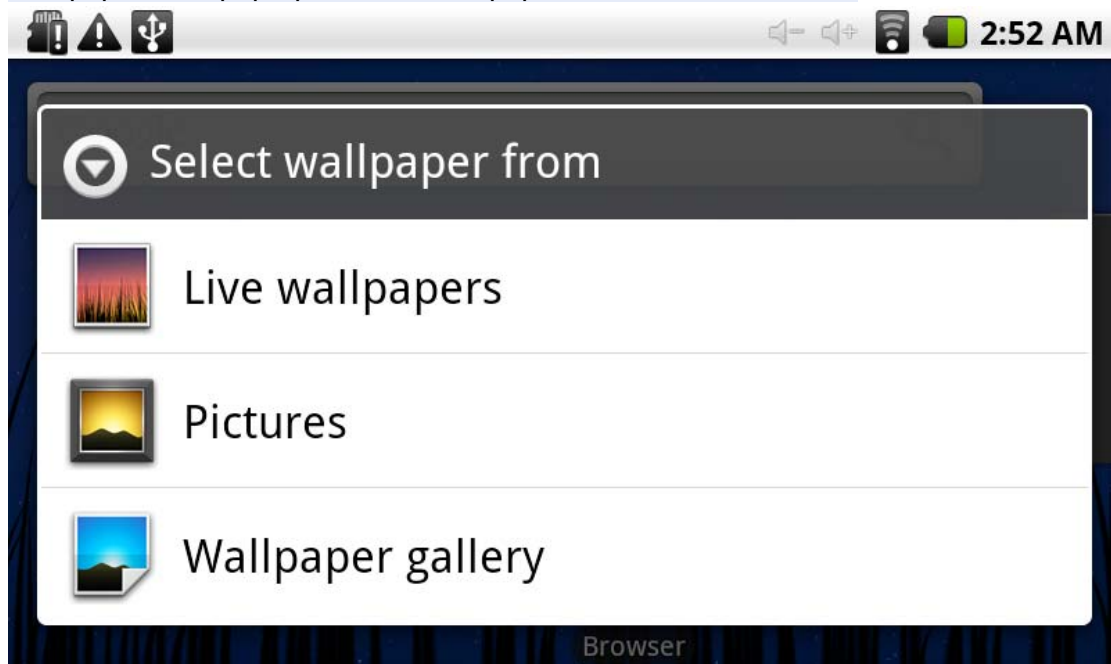


Wallpaper:

System supports static image wallpaper, as well as 3D wallpaper.

In the desktop interface, hold down the Menu button, pop-up menu option, select the

"wallpaper", the pop-up "Choose wallpaper source" selection box:



Have the following options:

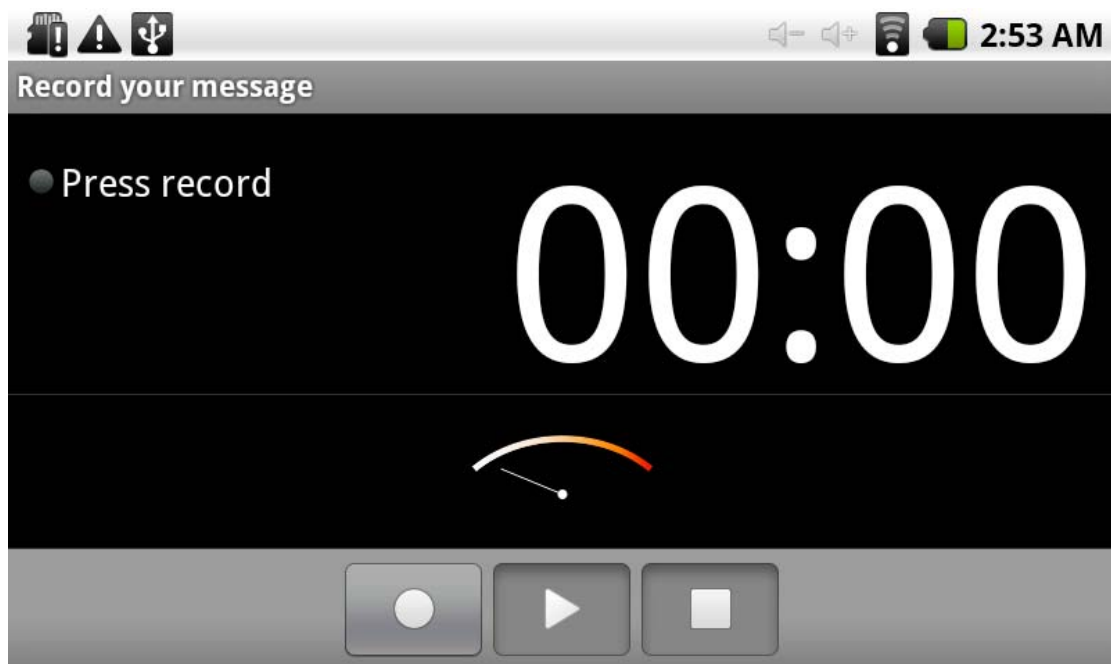
Select "Wallpaper Gallery": You can select the system provides a static picture as wallpaper.

Select "Current Wallpaper": You can select the system provides 3D wallpaper.

Select "Photo": You can use the picture as wallpaper Customize.

Recording:

Click the main menu in the "recorder" icon into the "tape" the main interface. As shown below:

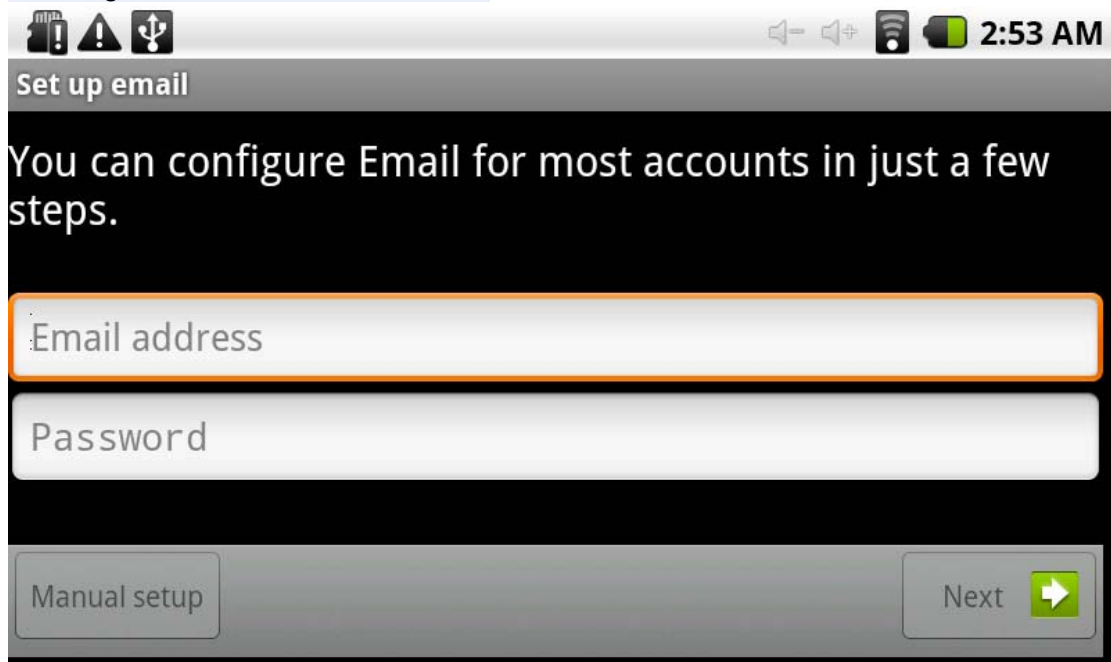


Note: when inserting SD card recording, audio file will be saved in the SD card.

Select "Record" button recording, recording is completed, select "Stop" button. At this point you can select the "Play" button plays the sound just recorded. Select "Use this record" button, save the recording, this can be found in the SD card in the appropriate recording documentation; If you do not save, you can select the "Discard" button.

E-mail client:

In the main menu, click "Email" icon to enter the e-mail client. The first entry will ask to configure the account information. As shown below:



Set up email

You can configure Email for most accounts in just a few steps.

Email address

Password

Manual setup

Next

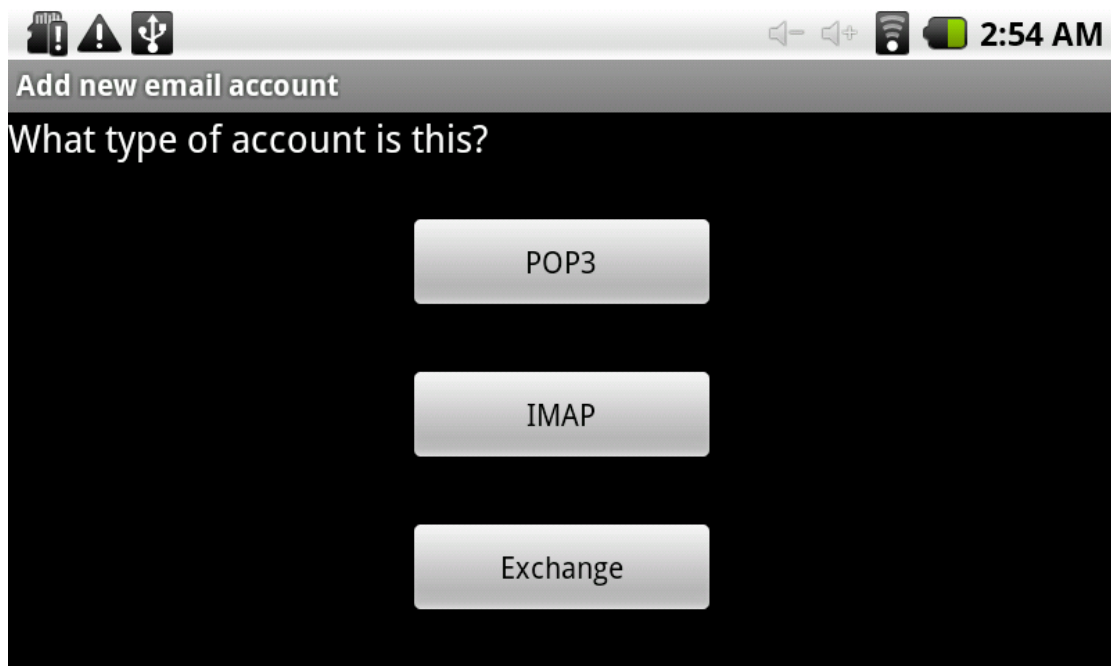
E-mail require network support, please email links to ensure normal.

Here we dadahacker@126.com Case:

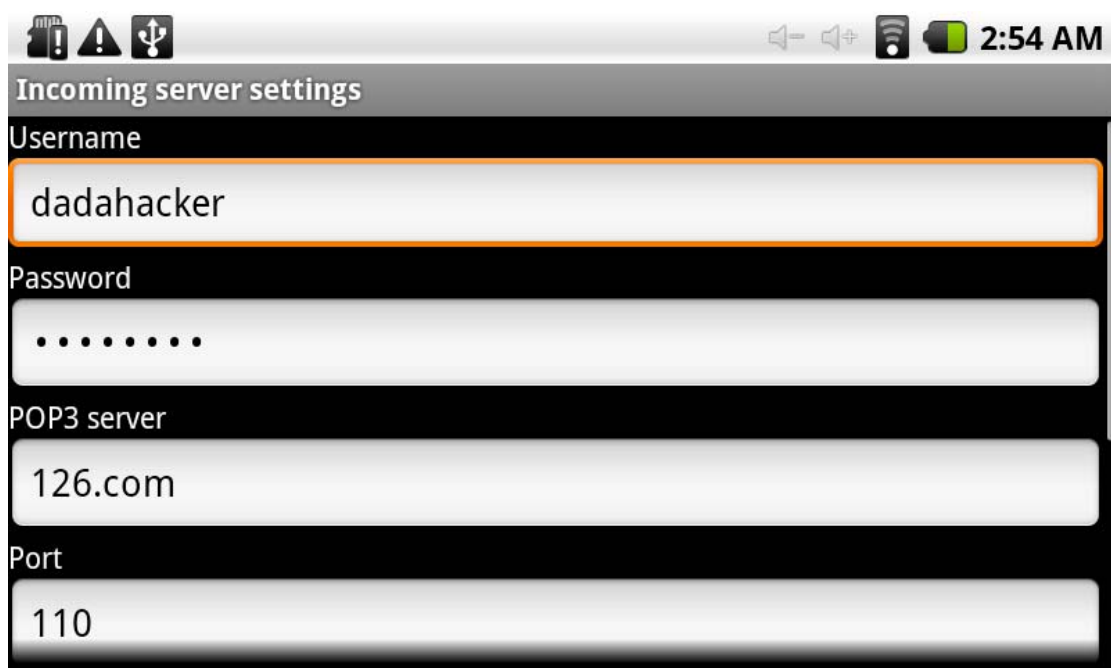
dadahacker@126.com(Enter the email address bar inside your valid e-mail address: dadahacker@126.com).

In the Password field enter your valid password: 123456789.

You can then select the "Next", select the account type interface appears as shown below:



Here we are using a POP3 account type. Appears to accept the server after setting



the interface as follows:

Please e-mail providers, each based on the information, set different parameters, such as:

POP3 server: The system default is "126.com", should be amended to "pop.126.com"

Port number "110"

Then select "Next", will enter the "Check to accept the server settings", if set correctly, there will be "outgoing server settings" interface as follows:

外发服务器设置

SMTP 服务器

126.com

端口

587

安全类型

无

☒ 需要登录。

用户名

Set SMTP server "126.com" as "smtp.126.com"

Modify the port number "587" to "25"

Drag the scroll bar, select "Next" and enter "Check outgoing server settings" interface. If the settings are correct, will enter the following interface:

帐户选项

电子邮件检查频率

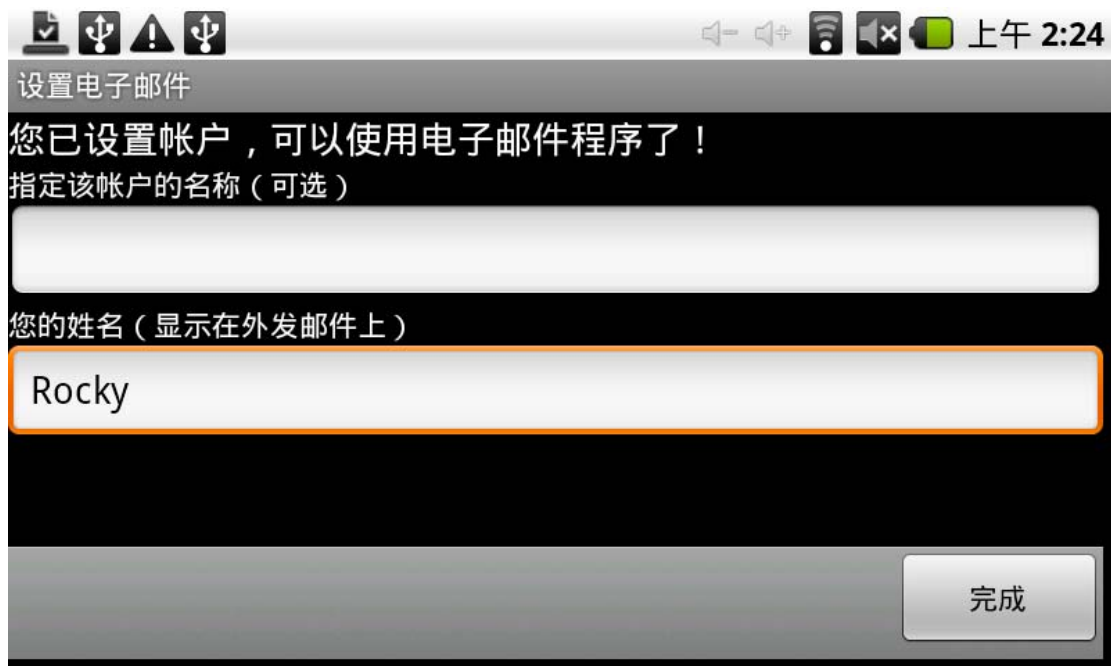
每 15 分钟

☒ 默认情况下从此帐户发送电子邮件。

☒ 收到电子邮件时通知我。

下一步

Select "Next", you can enter the account information to customize the interface:



In the "Your Name" enter the bar you want to show the name of outgoing mail, enter here: Rocky

Then click "Finish" button to enter the mail interface. It will automatically load the e-mail, mailing list below shows:




Select a column can view the messages, you can view the column inside a "reply", "delete", "Open attachment" and other operations.



我们的价值观：用户第一

团队合作、追求卓越、拥抱变化

诚信、激情、专业、高效、创新

 MD700测试报告.xls
27.0 kB

打开

回复

全部回复

删除

External devices:

*USB connection:

MID using the USB connection and PC, the default connection method is the synchronous mode. Can drag the status bar pulled down, there are interface:

2 September 2009

(无服务) Clear

Ongoing

 **USB connected(Internal)**
Select to copy files to/from your computer.

 **USB debugging connected**
Select to disable USB debugging.

Notifications

 **SD card unexpectedly removed**

"USB Connected (Internal)": that built-in memory.

"USB is connected": said external memory (SD card).

If you need to copy data using USB, you can select the load you need the memory, as:



Loading is complete, you can see in the PC end of the corresponding letter.

*OTG use

Support the FAT32 format for mobile devices: for example, U disk, mobile hard drive.

Plug and Play connection method.

Use OTG cable MID701 USB OTG port and external device.

Keyboard Mouse

Support plug and play USB mouse, keyboard equipment.

Firmware Upgrade

Android upgrade process will format the internal flash memory and, if necessary, back up your data in advance.

Android PC upgrade client upgrades the use of specialized tools, the latest upgrade tool for download:

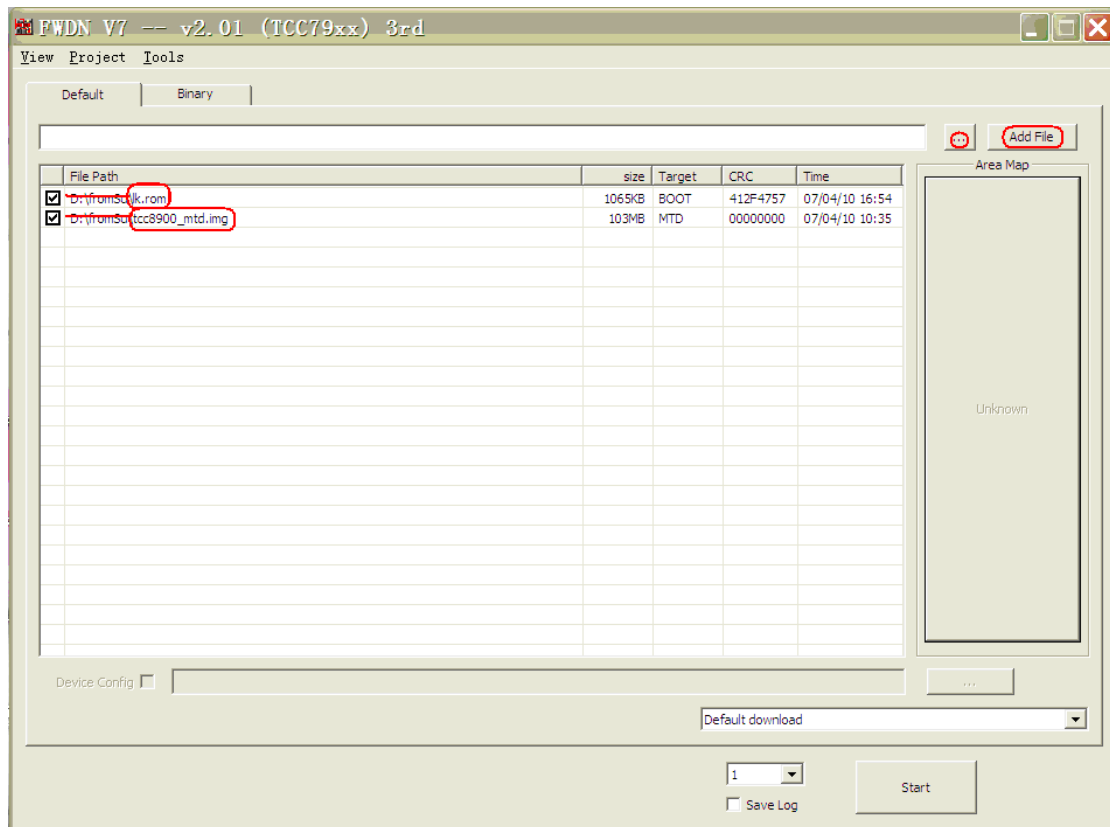
Upgrade file include: lk.rom and tcc8900_mtd.img. Can be downloaded through the following website package:

Upgrade process is as follows: (in order to upgrade the Windows XP example)

1: Download and unzip upgrade tool.

2: Download and extract the upgrade files.

3: In the PC side running the upgrade tool FWDN 【If prompted to install drivers, install the driver FWDN directory】. The upgrade files will be added to the FilePath lk.rom and tcc8900_mtd.img list, as shown below.



4: Please add to the need to upgrade the MID701 DC adapter. 【Upgrade process needs to ensure that external power supply】.

5: presses MID701 the touch screen, and pressing the power key. The machine starts, the following prompt appears the word:

“if you want to update ,please release power button .”

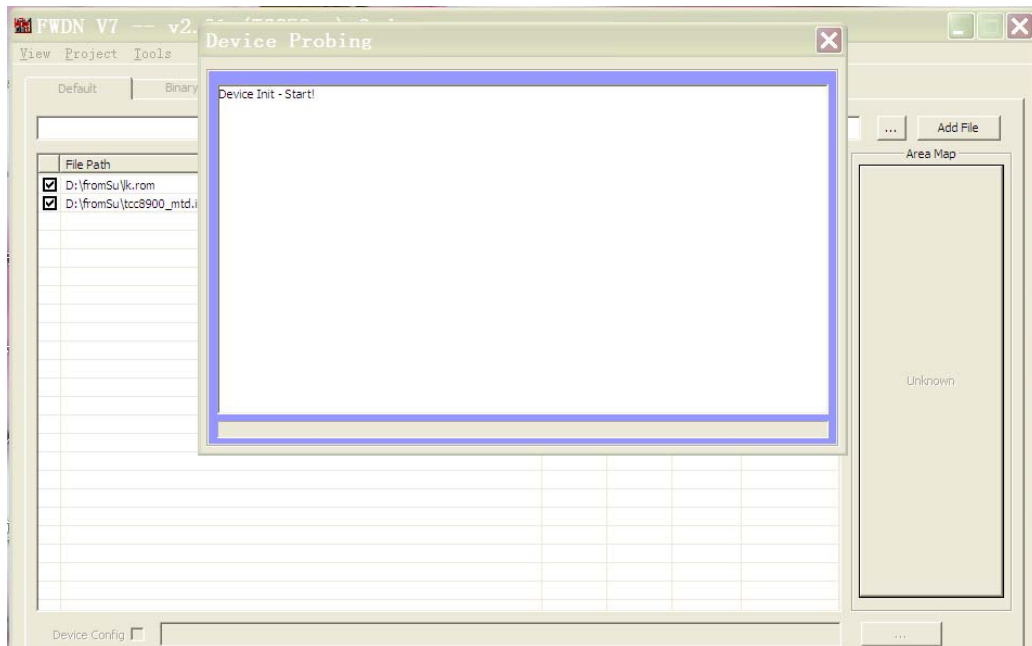
Follow the prompts Language: Release the power button and the screen. At this point the following prompt screen will appear:

“If you want to update ,please touch powerbutton.”

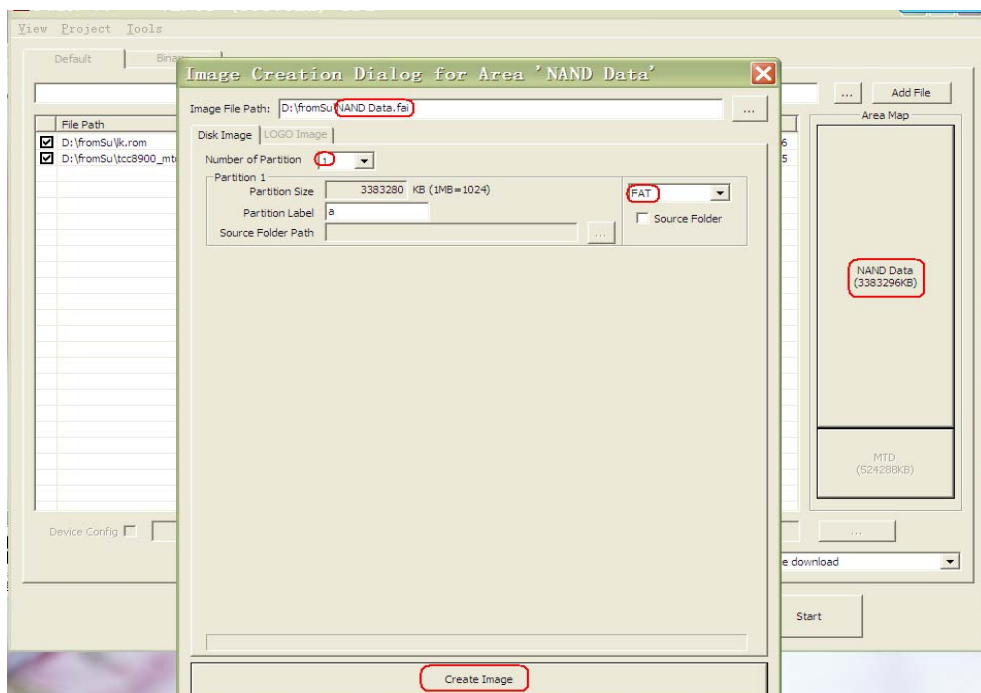
Follow the prompts Words: hand-hold the power button and hold for a while, until the screen the following word prompted:

"FWDN Start", before we can release the power button

Finally, please use the USB cable to connect PC terminal and MID701. At this point, PC-side FWDN program interface appears as follows:



6: Initialization complete, click FWDN interface to the right of "Nand Data" area, there are interface:



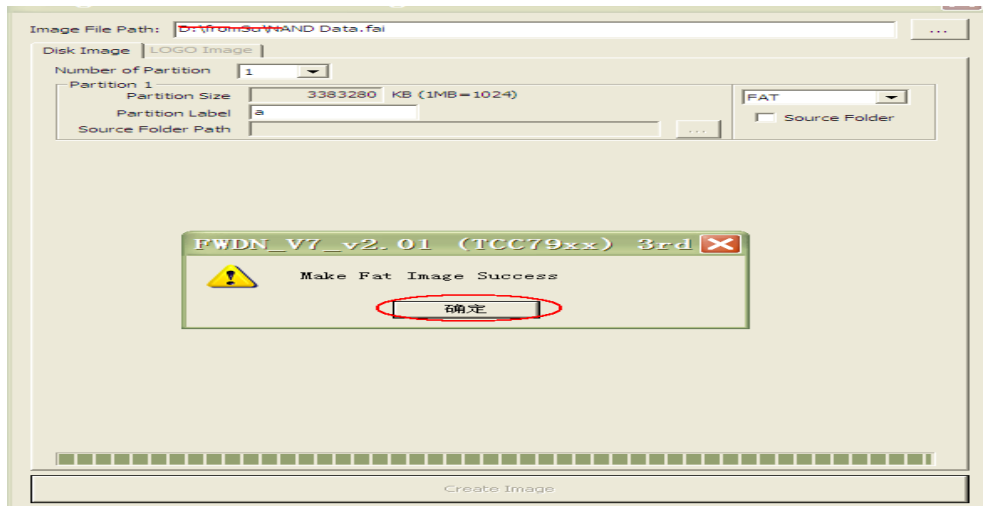
Please fill out the correct option according to the diagram of each:
ImageFilePath: Nand Data files store the resulting path can be chosen at random.

Number Of Partion : 1

Partion 1: Select FAT format

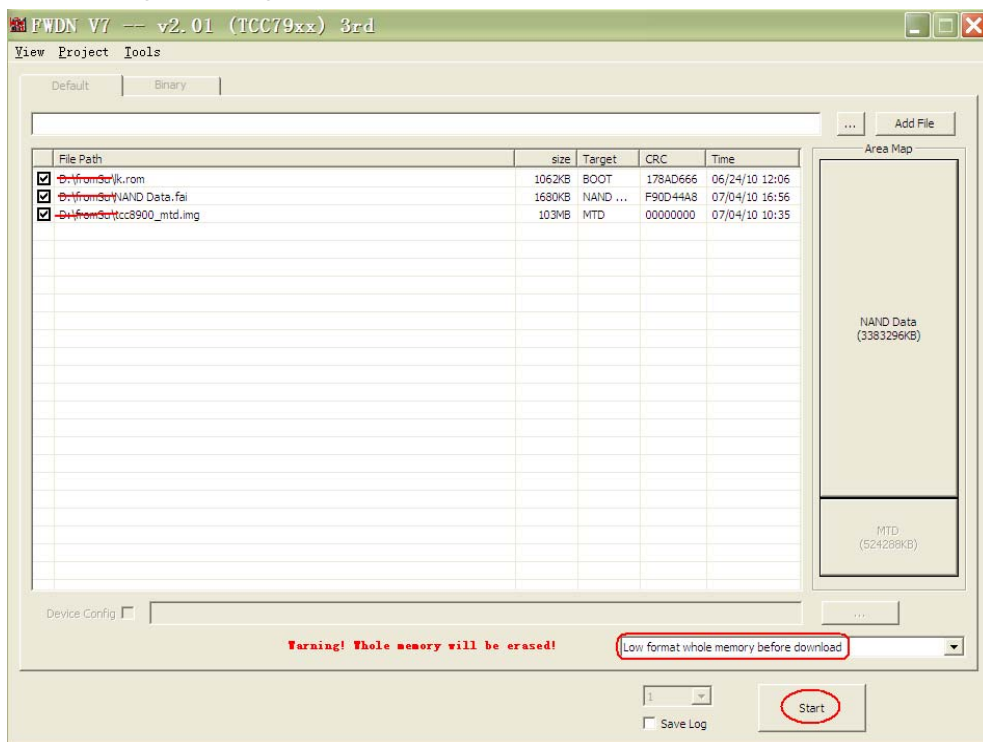
Partion Lable:a

Filling is complete, click CreatelImage button below:

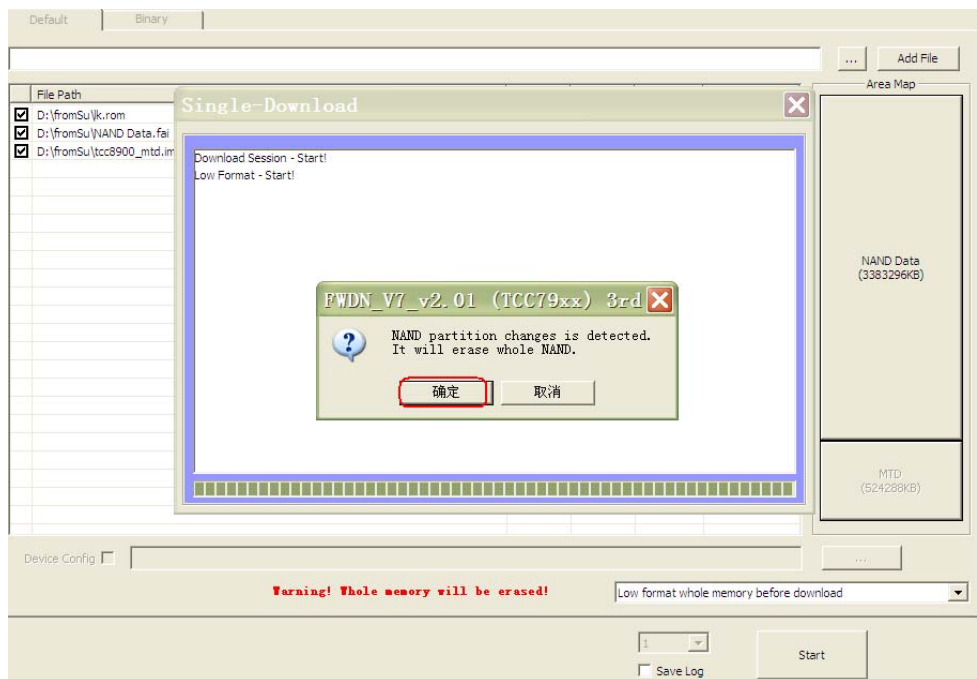


8: Select "OK", the following interface:

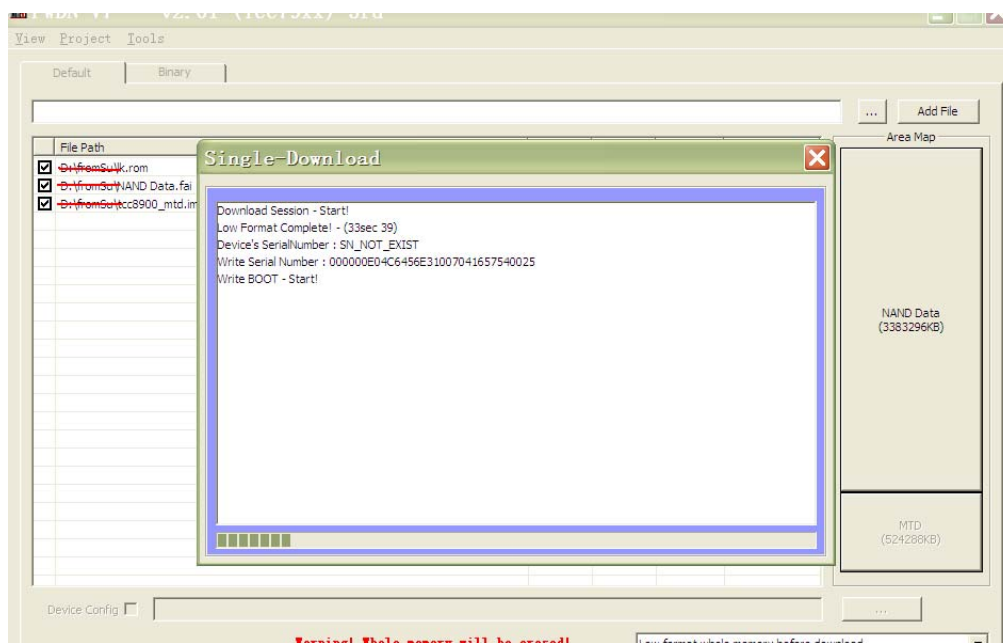
Please select Low format whole memory before download. Then click on Start button. System begins to upgrade.



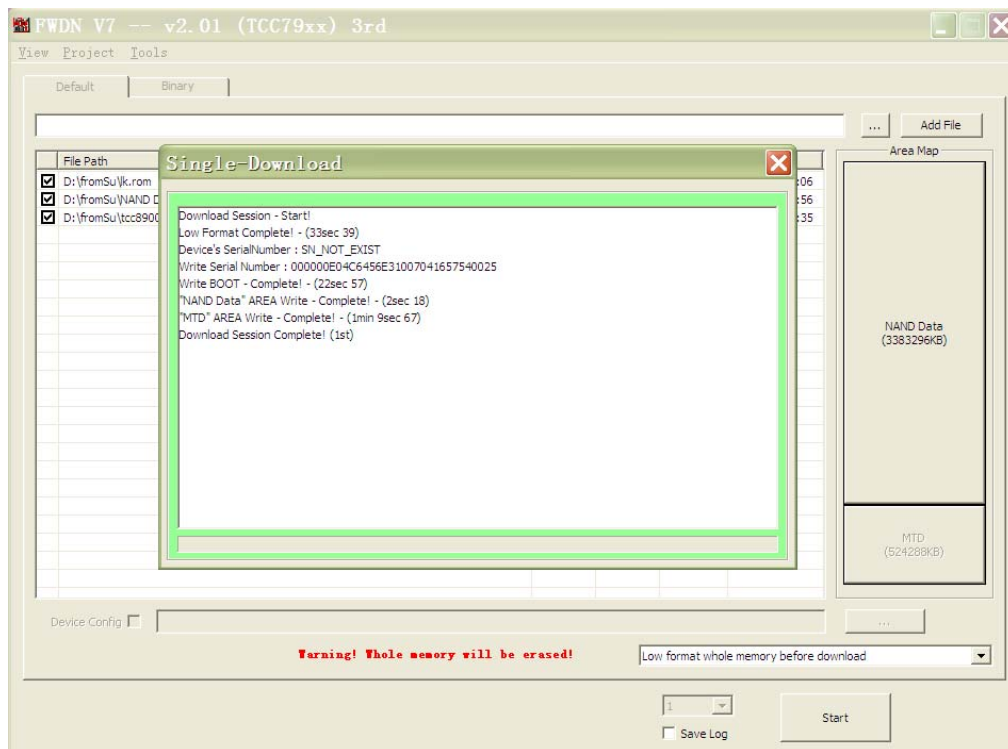
The upgrade process similar to the following interface will appear:



Confirmed, continue to escalate:



After the upgrade is complete, the interface prompts the following:



Reset reset button, complete the upgrade operation.

Note: the first boot after the upgrade process is relatively slow, this is normal. The second boot much faster.

FCC Warning:

This equipment has been tested and found to comply with the limits for a Class B digital device, pursuant to part 15 of the FCC Rules. These limits are designed to provide reasonable protection against harmful interference in a residential installation. This equipment generates, uses and can radiate radio frequency energy and, if not installed and used in accordance with the instructions, may cause harmful interference to radio communications. However, there is no guarantee that interference will not occur in a particular installation. If this equipment does cause harmful interference to radio or television reception, which can be determined by turning the equipment off and on, the user is encouraged to try to correct the interference by one or more of the following measures:

- Reorient or relocate the receiving antenna.
- Increase the separation between the equipment and receiver.
- Connect the equipment into an outlet on a circuit different from that to which the receiver is connected.
- Consult the dealer or an experienced radio/TV technician for help.

Caution: Any changes or modifications to this device not explicitly approved by manufacturer could void your authority to operate this equipment.

This device complies with part 15 of the FCC Rules. Operation is subject to the following two conditions: (1) This device may not cause harmful interference, and (2) this device must accept any interference received, including interference that may cause undesired operation.

This equipment complies with FCC RF radiation exposure limits set forth for an uncontrolled environment. This device and its antenna must not be located or operating in conjunction with any other antenna or transmitter.

The device has been evaluated to meet general RF exposure requirement. The device can be used in portable exposure condition without restriction.

Frequently Asked Questions Treatment:

1: What is Android?

A: Android is Google on November 5, 2007 announced the open source Linux-based operating system name.

2: What is APK?

A: APK is Android Package acronym that Android installation package.

3: How to obtain the APK?

A: You can download via PC-side installation, you can also "Android market" online to download and install.

4: The machine operating system version?

A: This machine adopts Android2.3, built-in hardware 3D acceleration, can run Android applications market most.

5: The machine can charge through USB?

Answer: no. But the results can be powered through the USB implementation. Recommend the use of Annex DC 5V adapter to charge.

Pictures for reference only, product appearance, functionality please prevail in kind, the product rules and design are subject to change without prior notice