

AI Services Activation

1. WeChat follow "Vifa Audio" public account,click "Experience Vifa"->"AI Speaker" to enter the activation page; or scan the manual and packaging QR code to enter the activation page.



2. AI activation page.



3. Login and register with your cell phone number.



4. Scan the QR code at the bottom of the speaker or enter the device number under the QR code to bind with the speaker.

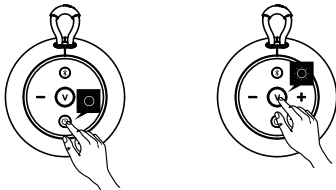


5. After successful activation, click on "How to connect the network" and follow the instructions on the page.



Network Connection

1. Boot up and start Vifa hotspot.

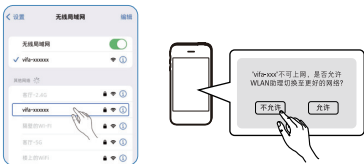


1. Long press the on button to turn on.

2. Press and hold the center mute button to activate the vifa hotspot. The voice prompts "Start Networking".

2. Connect to Vifa hotspot.

Go to the network settings page of your phone or tablet, select Vifa Hotspot and connect successfully, then return to the current page, if it prompts that there is no network connection in Vifa Hotspot, please do not switch the network.



Starting Network Connection

Click the button at the bottom of the page to enter the device configuration page, If you can't access the page after connecting to the hotspot, you can enter "192.168.5.1" manually in the browser to enter the page directly.

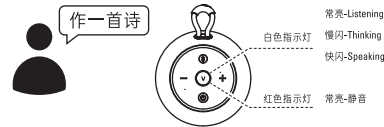


If you need to rewire the network, press and hold mute to release the hotspot again and repeat the above steps.

Conversations

1. initiate conversations

After selecting the network and entering the password, wait for 10 seconds, After the voice prompts "Networking Successful", start the conversation.



Listening state

The white indicator light is always on, so you can start a conversation, e.g. "Make a poem".

Thinking state

The white indicator light is flashing slowly, when the speaker is thinking about the conversation.

Speaking state

The white indicator light is blinking fast, when the speaker is answering the conversation.

Mute state

The red indicator light is always on, this time the speaker microphone is off, press mute to end the mute state.

2. conversation interruption

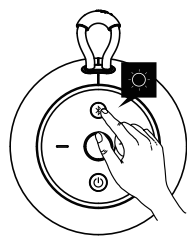


When the speaker is thinking (white light blinks slowly), say "Hi,Vifa" to the speaker to interrupt the thinking, and after the speaker dings, you can resume the conversation.

When the speaker is speaking (white light blinking), say "Hi,Vifa" to the speaker to interrupt the speaking, after the speaker dings, you can resume the conversation.

Music Playing

Bluetooth connection



1. Long press the Bluetooth button for 3 seconds, the blue light blinks to open Bluetooth,or say "open bluetooth" to the speaker,

2. Connect successfully, the blue light is always on, play cell phone music.

Clue Word

1. Bluetooth play music, you can say to the speaker

"Play music" "Pause music" "Turn off" "Turn on Bluetooth" "Turn off Bluetooth" "Previous" "Next" "Louder" "Lower" "Turn off microphone" "Check battery level"

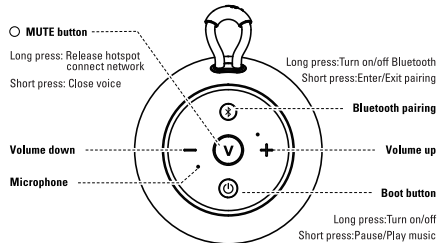
...

2. For information about AI services, say to the speaker

"How to subscribe" "Subscription status" "Free times" "Remaining times" "Usage times" "Expiration time"

...

Buttons and Indicator lights



Power on
Long press to turn on the machine, the status indicator is always on white.
Power off
Long press to turn off the machine, the status indicator is off.
Power saving mode
If there is no further operation for 20 minutes, the speaker will turn off automatically.

Restore Factory Settings
Long press 10 seconds to restore factory settings, power white indicator light, Bluetooth indicator light flashing at the same time.

White light - power on/full charge **Red light - blinking red when battery is low**
Red breathing when charging
Blue light - a Blue fast blinking, Bluetooth is in connectable state
b Blue breathing, not discoverable
c Blue off, Bluetooth is off
d Blue always on, Bluetooth is connected
White light - White constant light, listening state
White slow blinking, thinking state
White fast blinking, speaking state
Red light - Always on red, microphone muted
Blinking red, starting network connection

Important safety instructions

Regulatory safety information

- Read this instruction manual.
- Keep this instruction manual in a safe place.
- Pay attention to all warnings.
- Follow all instructions.
- Place the equipment in a stable location where it cannot easily fall.
- To ensure adequate ventilation, keep a distance of at least 15 centimeters (6 inches) around the equipment.
- If the unit is powered by a power adapter, purchase a power adapter that is CCC certified and meets the standard requirements.
- Use only the accessories/accessories specified by the manufacturer.
- For repairs, refer to qualified service personnel.
- Throwing the battery into a fire or stove, or breaking or cutting it with an external force may result in an explosion.
- Ambient temperature should not exceed 45°C max, and 10°C min.
Storage temperature -20°C to 40°C, transportation temperature 10°C to 45°C.
- Placing batteries in extremely high temperatures can cause battery explosions or leakage of flammable liquids or gases.
- Extreme low air pressure can cause the battery to leak flammable liquid or gas.
- To protect the environment, please do not dispose of the batteries.
- This product can be used in tropical conditions.
- Batteries (packs or combi batteries) should not be exposed to environments such as sunlight, fire or similar excessive heat.
CAUTION: There is a danger of explosion if the batteries are not replaced properly and should only be replaced with the same or equivalent type of batteries.

WARNING:

- Do not open the device. There are no user-serviceable parts inside the unit. Danger of electric shock inside.
- Do not expose the product to open flames, e.g. burning candles should not be placed on the product.
- Do not install near sources of heat, e.g. radiators, underfloor heating, ovens or other devices capable of generating heat (including power amplifiers).
- Please only charge in a clean and dry state.
- WARNING!** Wet or dirty micro USB connectors can cause overheating or melting, which could result in fire or personal injury. Always use a clean and dry micro USB connector to charge your speakers.
- Follow these instructions:
 - The USB charging port of your speakers must be cleaned and dry before charging after the speakers have been exposed to liquids, dust, or the like. For example, compressed air or a similar alternative can be used to clean and dry the charging port if using the Power Up charging accessory.
 - Make sure the following parts are clean and dry before charging USB charging port (located on the Power Up light side):
 - The included USB charging cable is not waterproof. Before charging, make sure that the wire-wound connector is clean and dry!

Vifa Limited Warranty

This warranty applies only to products manufactured by Vifa Denmark AG ("Vifa") (each a "Product").

Warranty Coverage

This Limited Warranty covers the functioning of the product only in the normal environment as specified in the instruction manual, and does not cover failures that do arise from improper or unreasonable use or maintenance, such as accidents, water ingress, improper packaging, lightning strikes, electrical surges, or unauthorized tampering with the product, alterations or modifications not authorized by Vifa. This limited warranty is limited to the repair or replacement of the product at the discretion of Vifa, and the cost of transportation, relocation, and installation of the product is not covered by this limited warranty.

Warranty time

12 months 11 years, unless otherwise stated in the documents specified in the purchase. The warranty is effective immediately upon delivery of the product to the customer. However, the warranty period ceases immediately if the product has been repaired/alterd by a company or person not authorized by Vifa, or if the serial number of the product has been removed for whatever reason.

VIFA offers you

During the applicable Warranty Period, if Vifa receives valid notification of defects in any of the Products covered by the Warranty, Vifa will, within a reasonable time after receipt of the product of the defective condition, and depending on the circumstances, do either of the following.
(a) Repair the defect free of charge, using new or refurbished replacement parts.
(b) Replace the product with the same model.
(c) Refund the amount of the purchase of the product.
Response times may vary from country to country, including transportation of available parts. All faulty parts replaced will become the property of Vifa. Vifa is not obliged to repair, replace or refund the faulty product until the customer returns it to an authorized dealer. Any replacement product may be new or newer and provide at least the same functionality as the product being replaced. Repairs or damage outside of the limited warranty period are not covered by this warranty, except with prior approval.

How to get service

In the event of a product defect, you should take the following steps:
1. Refer to the user manual to identify and correct the problem.
2. If the problem cannot be solved by referring to the user manual, please contact the merchant/place where you originally purchased the product to inquire about the problem you want to solve.
3. If necessary, Vifa will arrange for repair or replacement of the product, please present the date and address of the purchase record of the original invoice from which you purchased the product. The terms of repair or replacement are subject to the express extended terms of delivery between you and the merchant/place and the terms of local electronics laws and are not covered by this Limited Warranty.

If you are shipping a product, neither Vifa nor the distributor is responsible for damage to the product incurred during transportation. Therefore, we always recommend that you pack your product in the original shipping carton.

Other Rights

This limited warranty does not affect your statutory rights. This limited warranty provides you with specific rights under certain conditions. You may also have other mandatory legal rights, depending on the country in which the product was originally purchased. This limited warranty does not affect similar legal rights and does not prevent you from seeking any legal remedies under the law.

Warranty Limitations and Liability

Except for damages to persons and property caused by gross negligence on the part of Vifa, Vifa's maximum compensation shall not exceed the price initially paid by you for the purchase of the product. Vifa is only liable for direct damages for personal injury and/or property damage caused by Vifa's gross negligence.

The right of final interpretation belongs to Vifa.



The exclamation point within the triangle is a warning symbol indicating that the product is accompanied by important instructions.



The exclamation point inside the triangle is a warning symbol indicating an important note accompanying the product.



The Bluetooth microlabel, Bluetooth names and combinations are trademarks owned by the Bluetooth SIG. Any use of Vifa Denmark A/S is under this license. Other trademarks and trade names are the trademarks and trade names of their respective owners.

Names and contents of hazardous substances in products

According to China's Requirements for Labeling of Restricted Use of Hazardous Substances in Electrical and Electronic Products in China

部件名称 Parts Name	有害物质 Hazardous Substances					
	铅 (Pb)	汞 (Hg)	镉 (Cd)	六价铬 (Cr(VI))	多溴联苯 (PBB)	多溴二苯醚 (PBDE)
电源线/电源 Cable/Adaptor	0	0	0	0	0	0
电路板组件 PWAs	X	0	0	0	0	0
塑料/其它部件 Plastic/Others parts	0	0	0	0	0	0
金属部件 Metal parts	0	0	0	0	0	0
电池 Battery	X	0	0	0	0	0

This table is compiled according to SJ/T11354.
0-Indicates that the content of the hazardous substance in the homogeneous material of the component is below the limit specified in GB/T26572.
X-Indicates that the content of the hazardous substance in at least one homogeneous material of the component exceeds the limit specified in GB/T 26572.
All the components in the table marked with X comply with the EU RHS Recast Regulation 2011/5EU Directive. All parts with "X" in the table are in compliance with the EU RHS Recast Regulation-2011/5EU Directive. This table shows where these hazardous substances are present in the components of electrical and electronic products. Depending on the model, the product may not include all of the above components, please refer to the actual sales configuration of the product.

This product is environmentally friendly for 10 years.
The battery part has an environmental protection life of 5 years.
The reference standard for the environmental protection service life depends on the temperature and humidity conditions under which the product normally operates.

This equipment has been tested and found to comply with the limits for a Class B digital device, pursuant to part 15 of the FCC Rules. These limits are designed to provide reasonable protection against harmful interference in a residential installation. This equipment generates uses and can radiate radio frequency energy and, if not installed and used in accordance with the instructions, may cause harmful interference to radio communications. However, there is no guarantee that interference will not occur in a particular installation. If this equipment does cause harmful interference to radio or television reception, which can be determined by turning the equipment off and on, the user is encouraged to try to correct the interference by one or more of the following measures:
-Reorient or relocate the receiving antenna.
-Increase the separation between the equipment and receiver.
-Connect the equipment into an outlet on a circuit different from that to which the receiver is connected.
-Consult the dealer or an experienced radio/TV technician for help.
Any changes or modifications not expressly approved by the party responsible for compliance could void the user's authority to operate the equipment.

Functional parameters

Description	VIFA AI Speaker
Technology Features:	Bluetooth wireless technology 2.4G Wi-Fi wireless technology Li-ion battery Vifa SOUND with dynamic bass for enhanced listening
Input	Bluetooth wireless technology
Speakers:	40mmx1 paper cone Chin iron hardened full-range unit
	46x65mmx2 passive radiator
Frequency Response	70Hz — 16KHz@-10dB
Input Voltage	USB, 5V.
Automatic shutdown	20 minutes without operation
Built-in battery	Li-ion battery 9.25Wh
Height/Diameter	105 mm / 93 mm
Net weight	0.45 kg

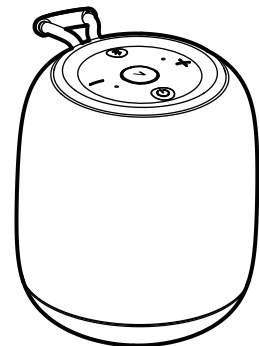
1x VIFA AI Speaker, USB-C Cable, Quick Guide

This device complies with Part 15 of the FCC Rules. Operation is subject to the following two conditions:
(1) this device may not cause harmful interference, and
(2) this device must accept any interference received, including interference that may cause undesired operation.

Caution!
Any changes or modifications not expressly approved by the party responsible for compliance could void the user's authority to operate the equipment.

FCC RF Radiation Exposure Statement
This equipment complies with FCC radiation exposure limits set forth for an uncontrolled environment. End user must follow the specific operating instructions for satisfying RF exposure compliance. This transmitter must not be co-located or operating in conjunction with any other antenna or transmitter.
The portable device is designed to meet the requirements for exposure to radio waves established by the Federal Communications Commission (US). These requirements set a SAR limit of 1.6 W/kg averaged over one gram of tissue. The highest SAR value is 0.225 W/kg, which meets the requirement of body exposure condition.

vifa



VIFA AI Speaker

QUICK GUIDE | MODEL: VIFA150