

Feature

- ※ High gain
- ※ Omani-directional
- ※ Wide bandwidth

Application

- ※ WCDMA/LTE communication applications

2.4G&5G WiFi

				版本	修改内容	修改人	日期

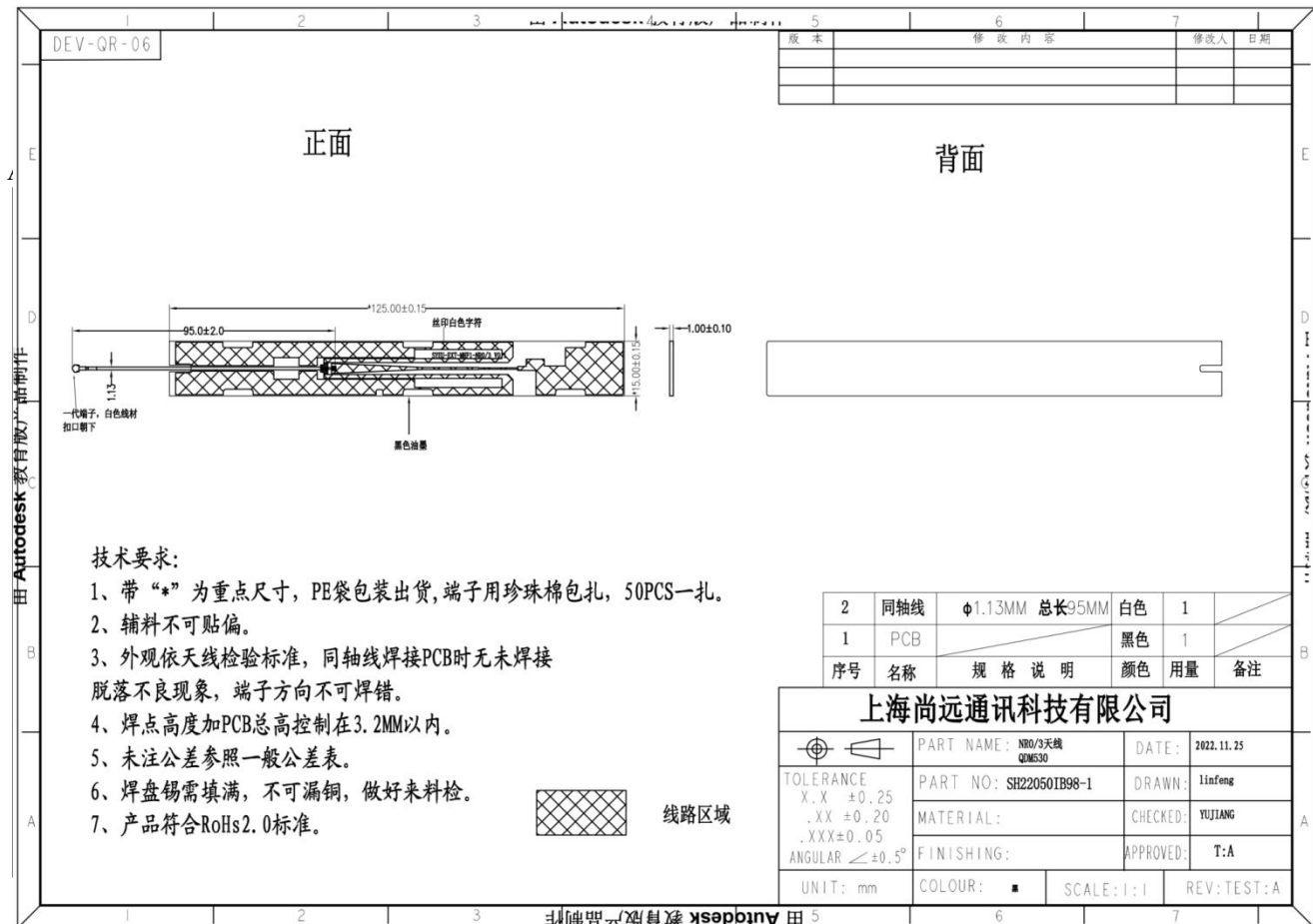
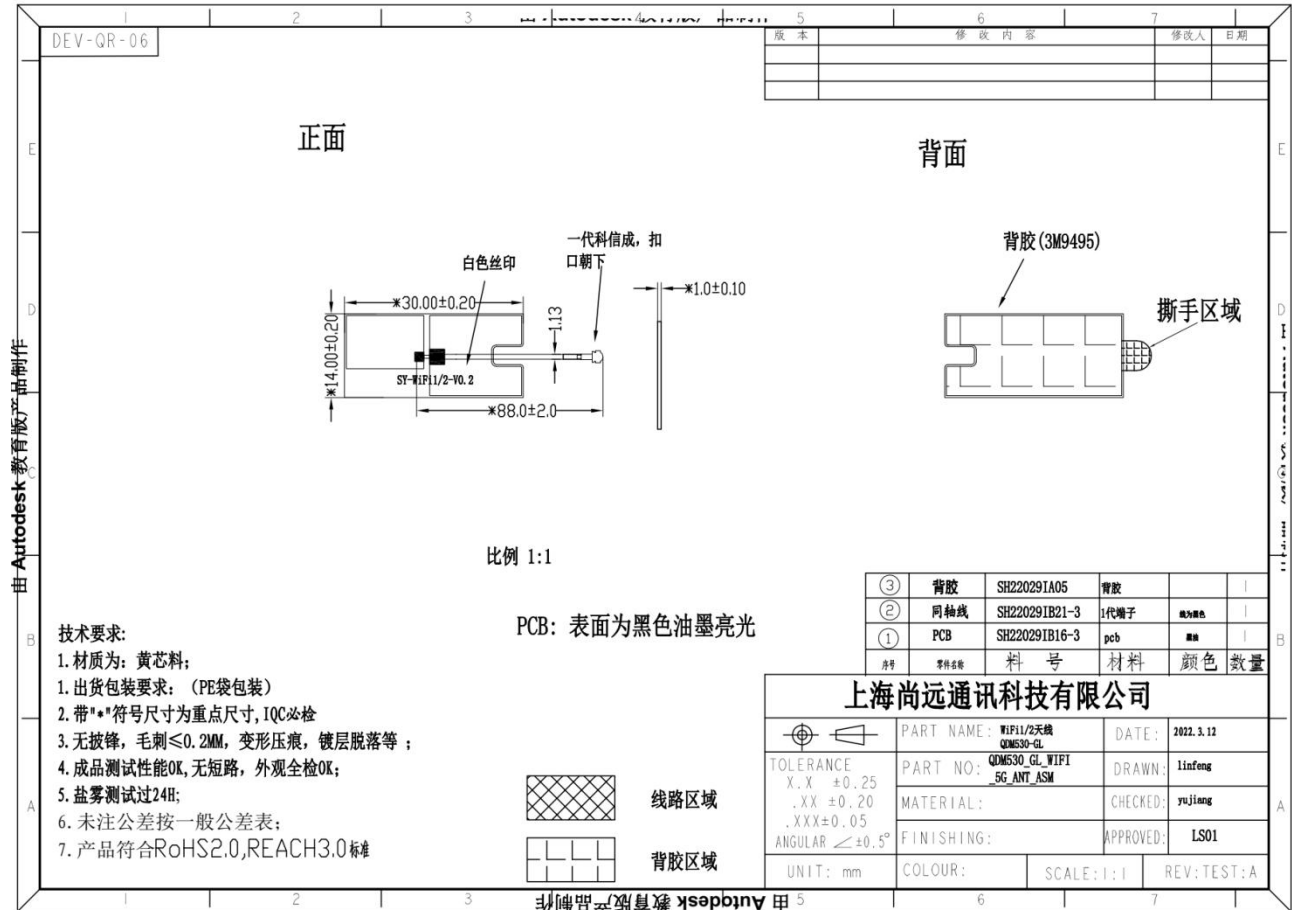
技术要求:

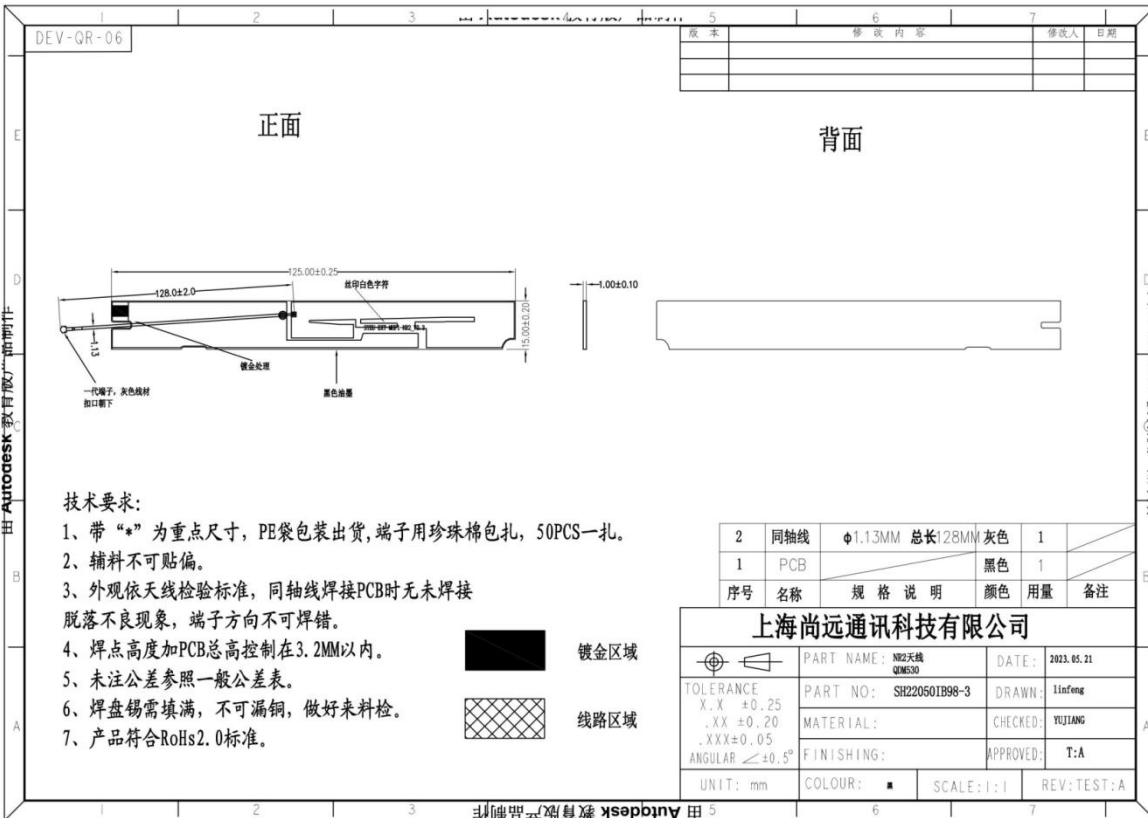
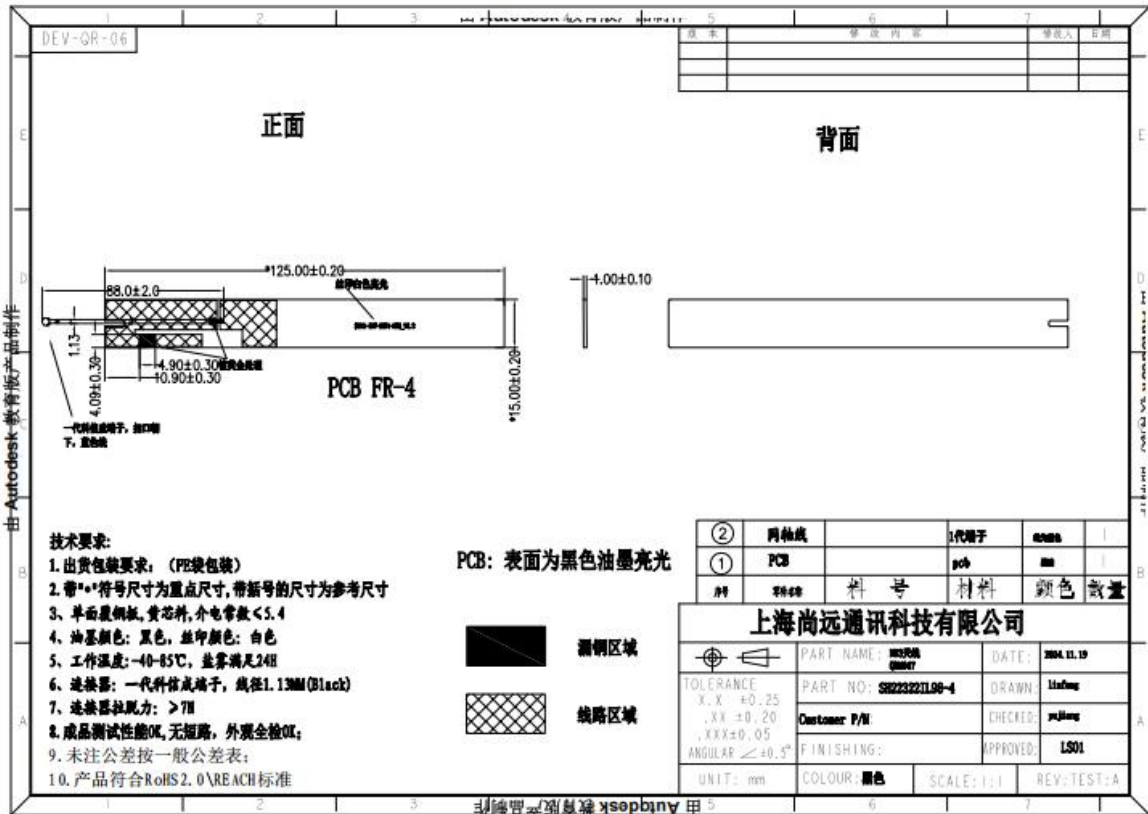
- 1: 带*为重点检测尺寸;
- 2: 未注公差参照一般公差表;
- 3: ◆尺寸作参考, 以配为准
- 4: 托盘包装
- 5: 产品符合ROHS 2.0, REACH 3.0标准;

序号	零件名称	料号	材料	颜色	数量
⑤	支架	SH22029IB02	ABS+PC	白色	1
④	同轴线	SH22029IW21-5	1代端子	线为白色	1
③	PCB	SH22029IB16-5	PCB	黑漆	1
②	同轴线	SH22029IB21-4	1代端子	线为黑色	1
①	PCB	SH22029IB16-4	pcb	黑漆	1

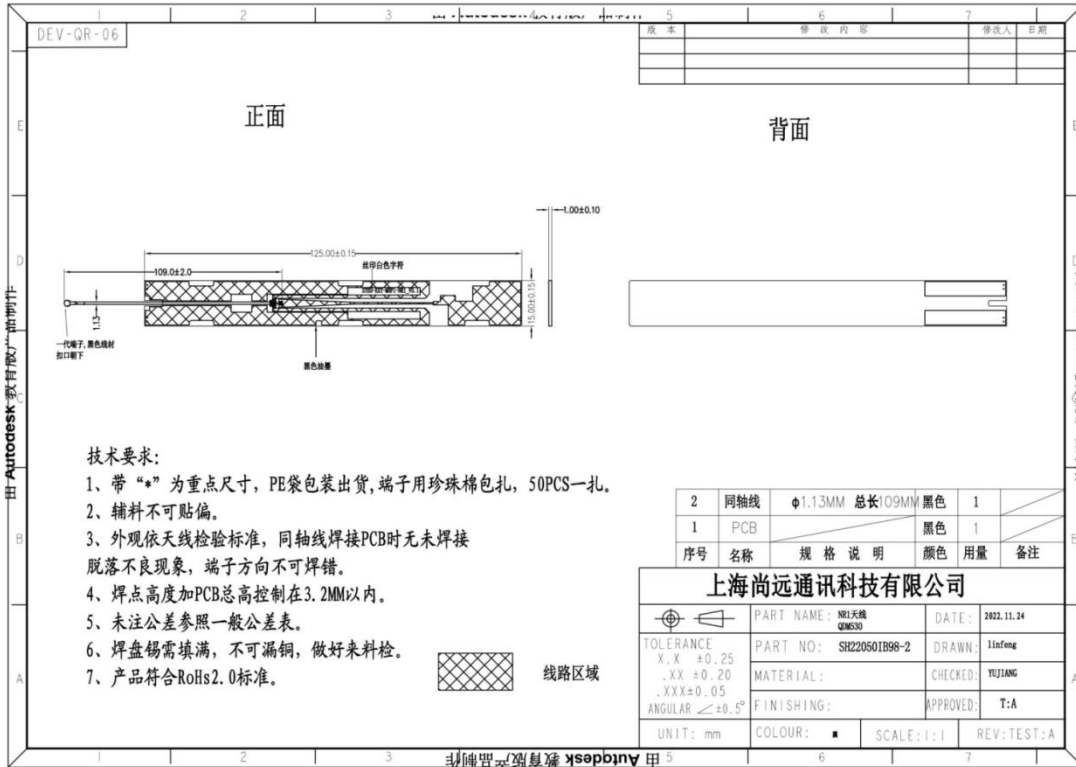
上海尚远通讯技术有限公司

TOLERANCE X.X ±0.25 .XX ±0.20 .XXX±0.05 ANGULAR <±0.5°	PART NAME: 2.4G/5G天线 QMS30-GL	DATE: 2023.3.17
	PART NO: QMS30_GL_WIFI_ANT_ASM	DRAWN: LINFENG
FINISHING:	CHECKED: YUJIANG	APPROVED:
UNIT: mm	COLOUR: 本色	SCALE:
		REV: LS01





NR1



Electric Specifications

TYPE	QDM031	
Transmitter Frequency	NR :3300-4200MHz	
	LTE: 690 – 2690 MHz	
	WIFI: 2400-2500Mhz, 5150-5850Mhz	
Receiver Frequency	NR : 3300-4200 MHz	
	LTE: 690 – 2690 MHz	
	WIFI: 2400-2500Mhz, 5150-5850Mhz	
RF-Output Power (E.I.R.P)	NR: 23+/-3dBm	
	LTE:23+/-3dBm	
Antenna Gain	LTE_B2: 3.16dBi LTE_B4: 3.17dBi LTE_B5: 0.8dBi LTE_B7: 2.86dBi LTE_B12: 0.84dBi LTE_B13: 1.86dBi LTE_B14: 1.42dBi LTE_B17: 1.86dBi LTE_B25: 3.16dBi LTE_B26: 0.5dBi LTE_B29: 0.84dBi LTE_B30: 1.28dBi	NR_B2: 3.16dBi NR_B5: 0.8dBi NR_B7:2.86dBi NR_B12: 0.84dBi NR_B13: 1.86dBi NR_B14: 1.42dBi NR_B25: 3.16dBi NR_B26: 0.5dBi NR_B30: 1.28dBi NR_B38: 2.64dBi NR_B41: 2.46dBi NR_B48: 0.08dBi

	LTE_B66: 3.17dBi LTE_B71: 0.69dBi LTE_B38: 2.64dBi LTE_B41: 2.46dBi LTE_B42: 3.41dBi LTE_B43: 3.74dBi LTE_B48: 0.08dBi LTE_B46: 4dBi	NR_B66: 3.17dBi NR_B70: 3.27dBi NR_B71: 0.69dBi NR_B77: 3.38dBi NR_B78: 0.88dBi
	2.4GWIFI: 2.5dBi 5G WIFI: 3.3dBi	
Type of Modulation	QPSK-16QAM-256QAM	

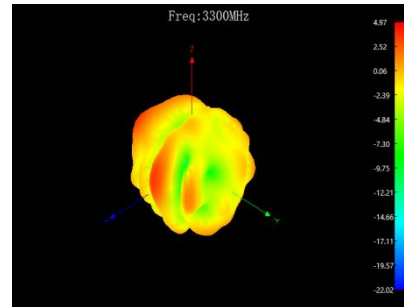
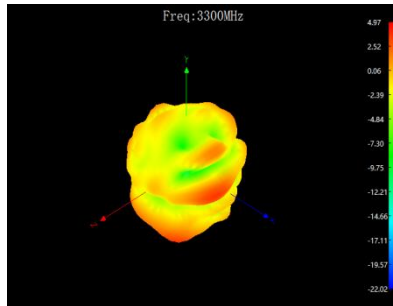
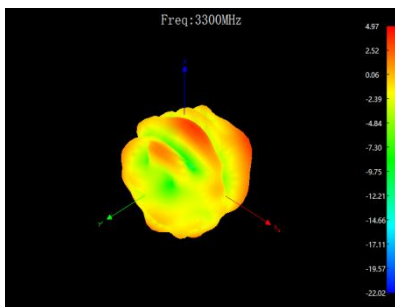
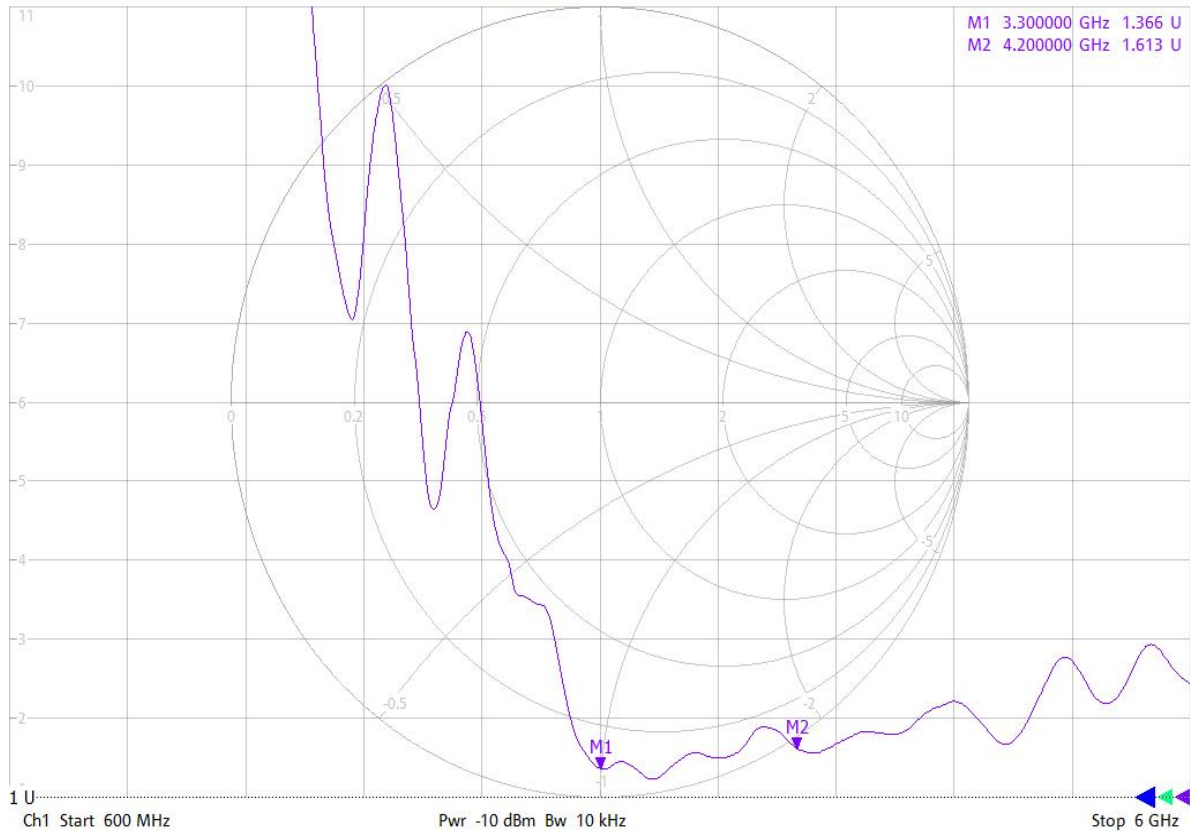
※ Antenna

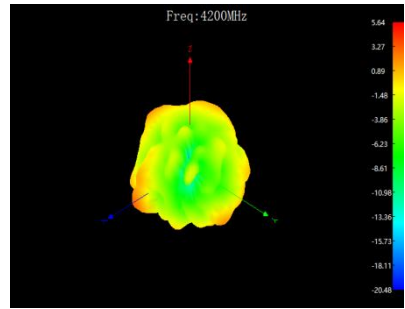
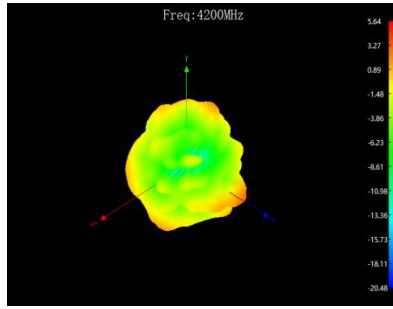
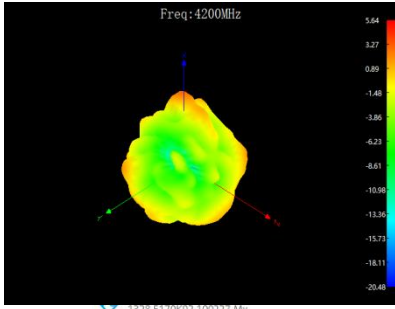
※ VSWR

ANT0

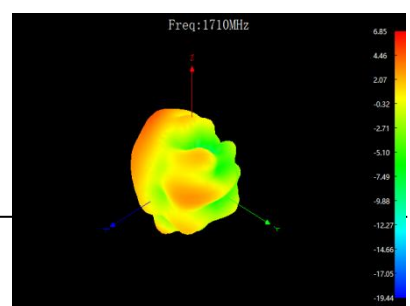
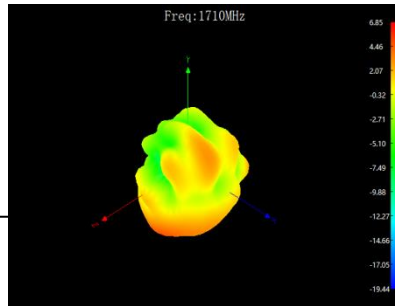
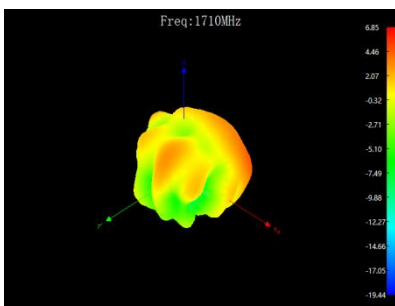
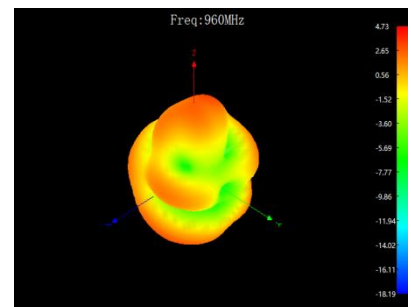
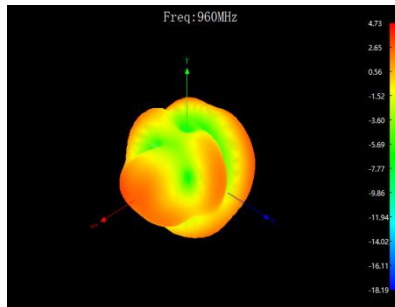
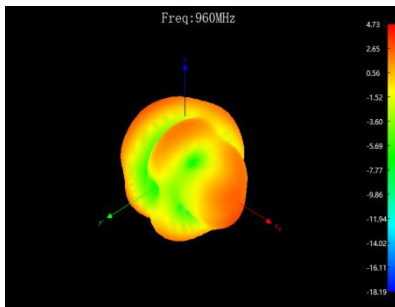
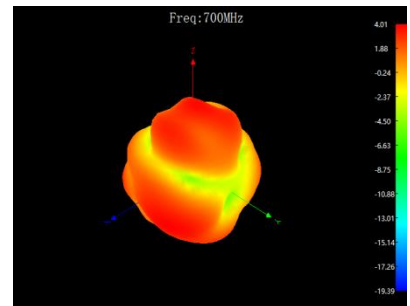
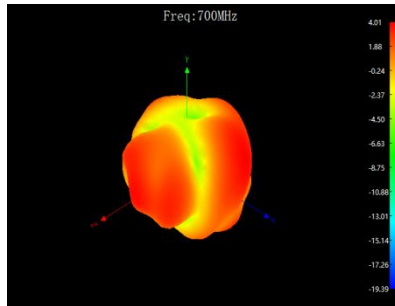
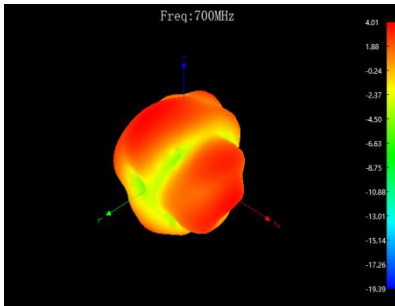
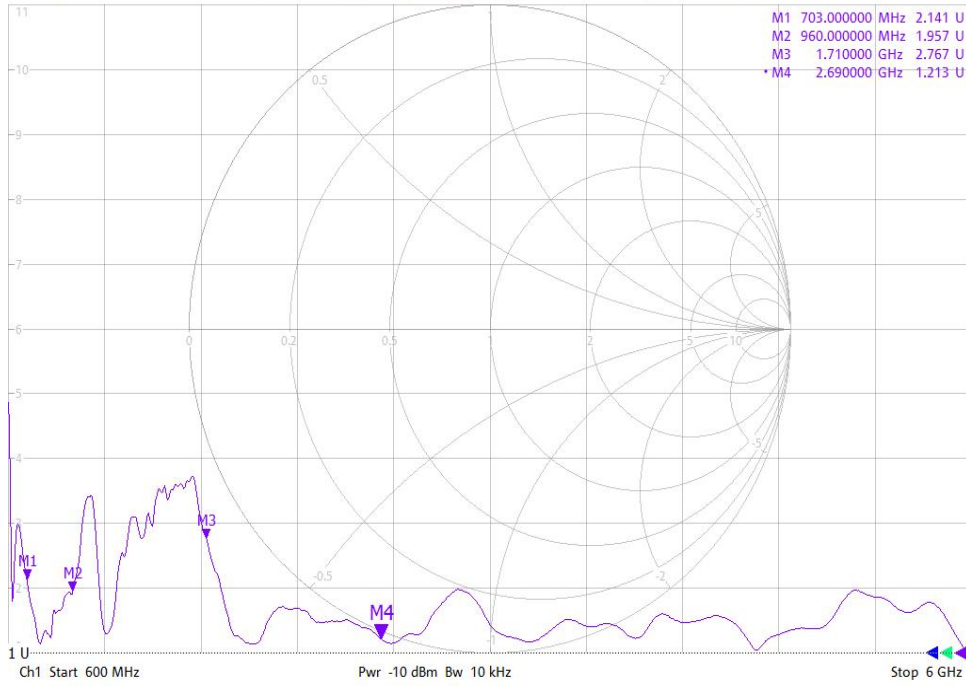
2/16/2023 10:53:22 AM
1328.5170K92-100227-Mv

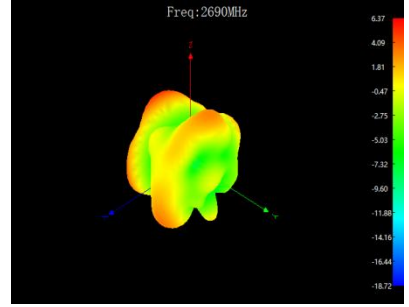
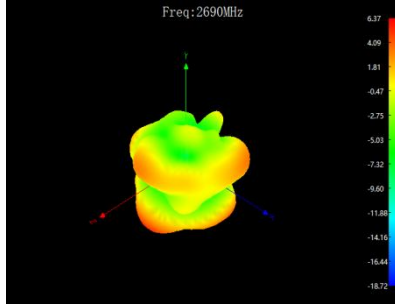
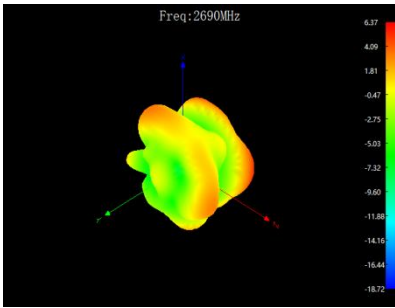
Trc1 S22 SWR 1 U/ Ref 1 U Invisible Trc2 S22 Smith 200 mU/ Ref 1 U Invisible 1
 Mem3[Trc1] S22 SWR 1 U/ Ref 1 U Invisible Mem4[Trc1] S22 SWR 1 U/ Ref 1 U Offs





Trc1 — S22 SWR 1 U/ Ref 1 U Invisible Trc2 — S22 Smith 200 mU/ Ref 1 U Invisible
 Mem3[Trc1] — S22 SWR 1 U/ Ref 1 U Invisible Mem4[Trc1] — S22 SWR 1 U/ Ref 1 U Offs



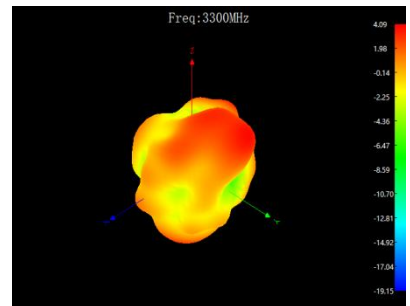
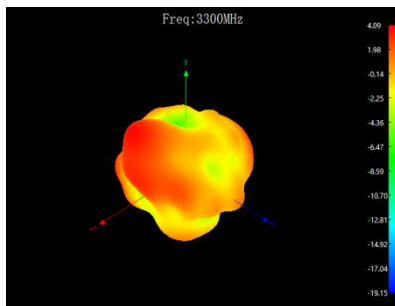
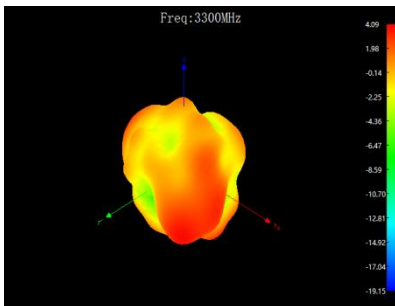
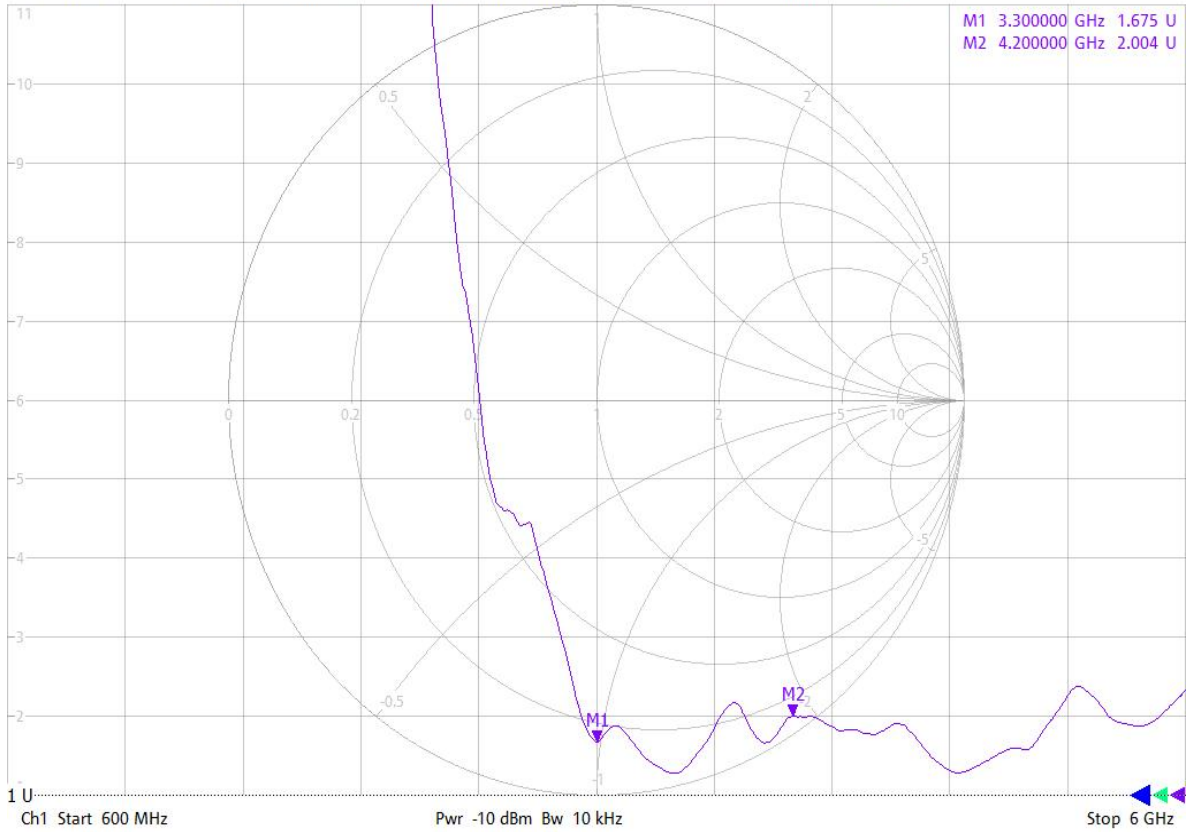


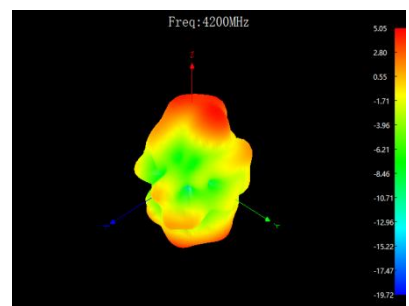
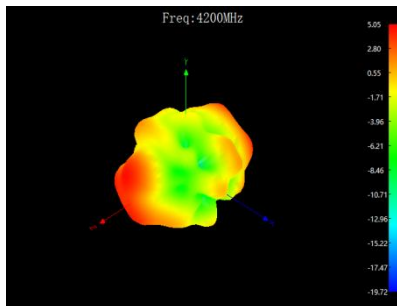
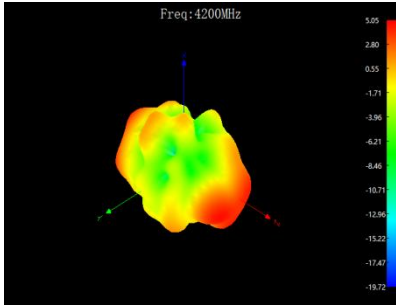
ANT2

2/16/2023 10:47:43 AM
1328.5170K92-100227-Mv

Trc1 — S22 SWR 1 U/ Ref 1 U Invisible Trc2 — S22 Smith 200 mU/ Ref 1 U Invisible
Mem3[Trc1] — S22 SWR 1 U/ Ref 1 U Invisible Mem4[Trc1] — S22 SWR 1 U/ Ref 1 U Offs

1

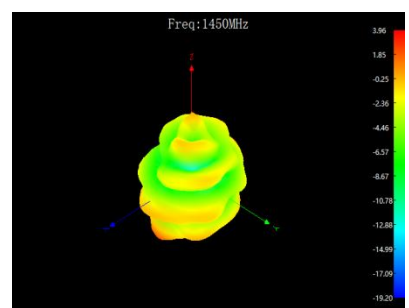
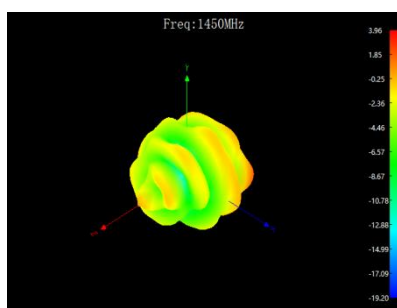
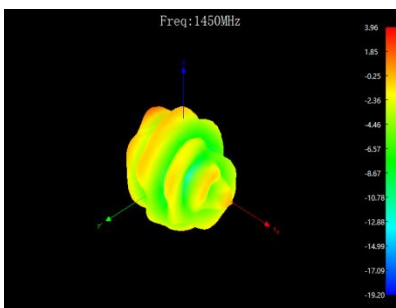
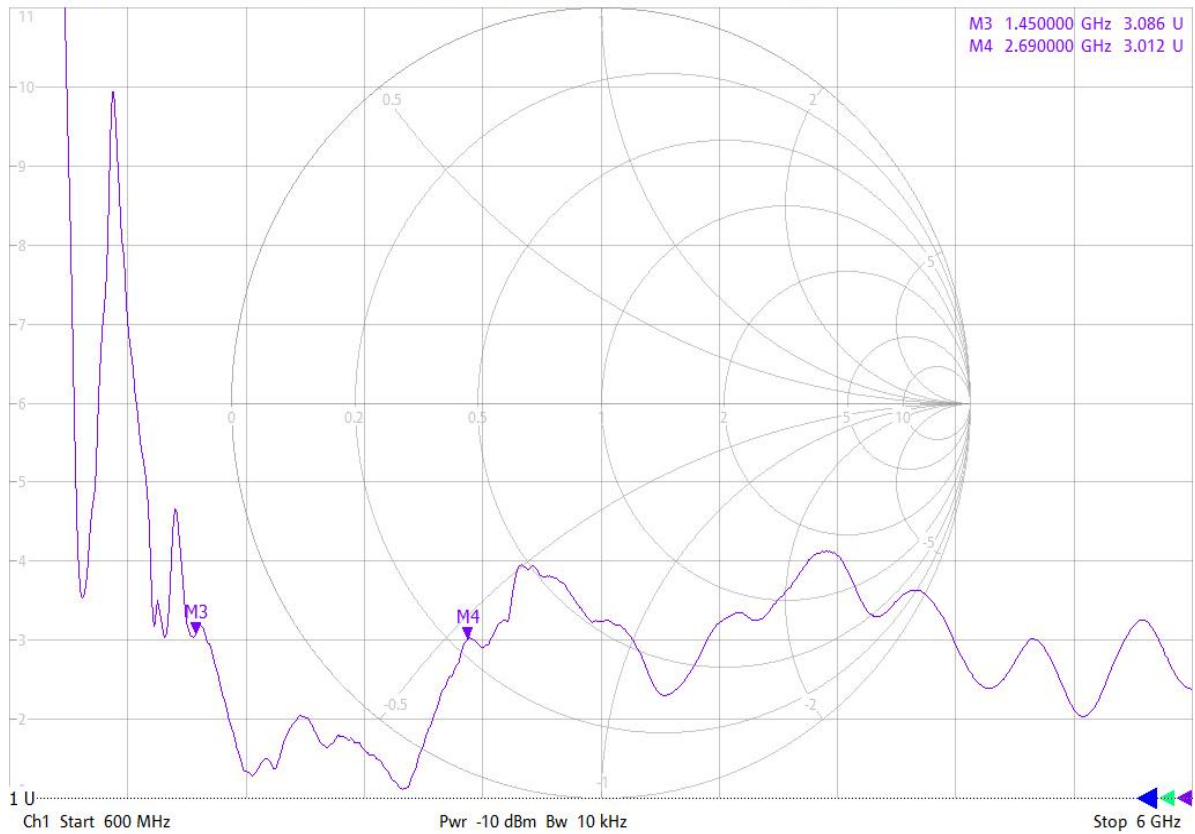


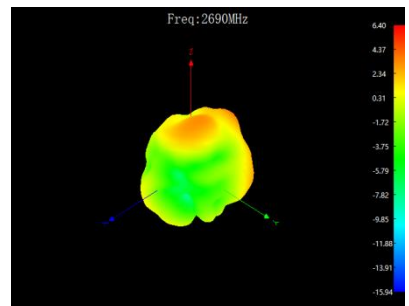
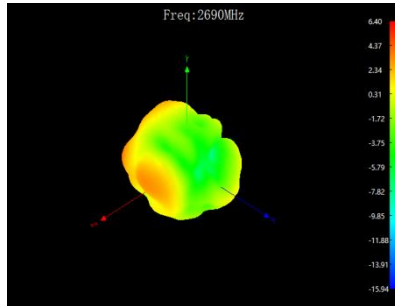
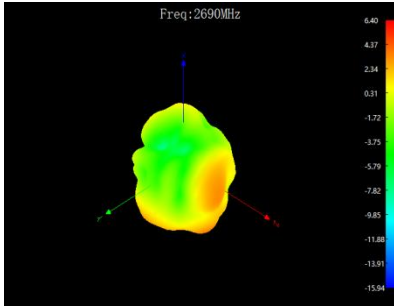


ANT3

2/16/2023 10:55:57 AM
1328.5170K92-100227-Mv

Trc1 — S22 SWR 1 U/ Ref 1 U Invisible Trc2 — S22 Smith 200 mU/ Ref 1 U Invisible 1
 Mem3[Trc1] — S22 SWR 1 U/ Ref 1 U Invisible Mem4[Trc1] — S22 SWR 1 U/ Ref 1 U Offs



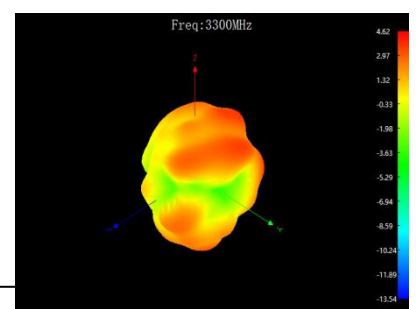
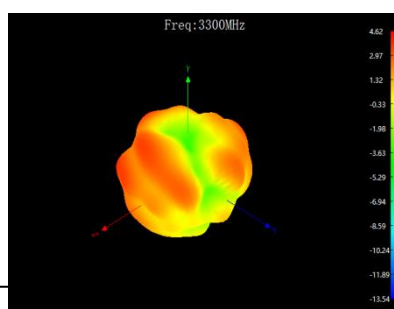
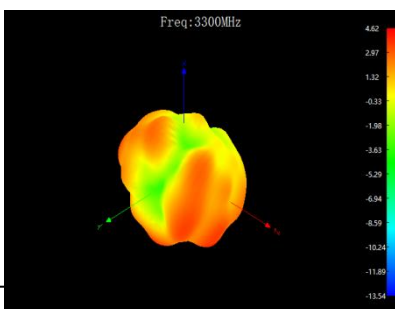
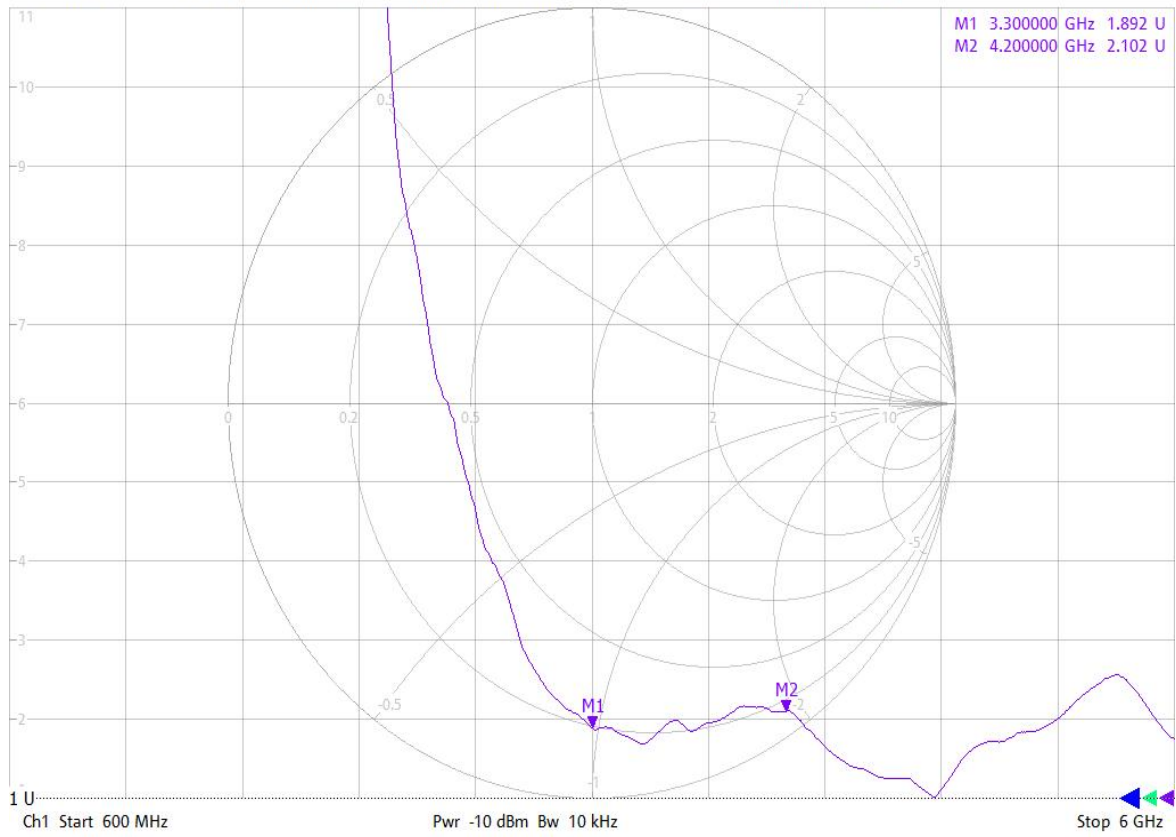


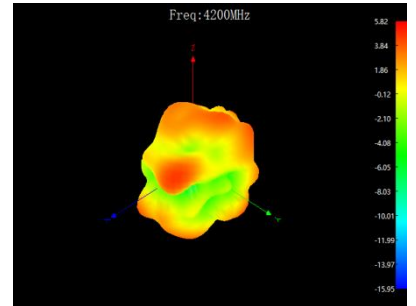
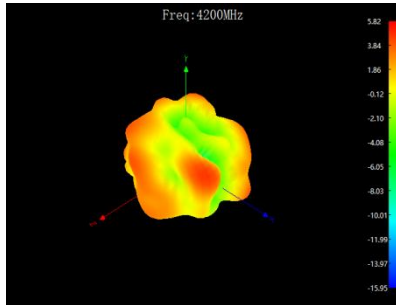
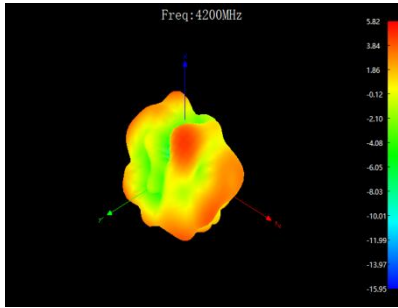
ANT4

2/16/2023 10:48:09 AM
1328.5170K92-100227-Mv

Trc1 — S22 SWR 1 U/ Ref 1 U Invisible Trc2 — S22 Smith 200 mU/ Ref 1 U Invisible
Mem3[Trc1] — S22 SWR 1 U/ Ref 1 U Invisible Mem4[Trc1] — S22 SWR 1 U/ Ref 1 U Offs

1



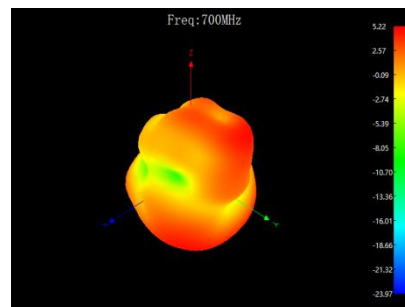
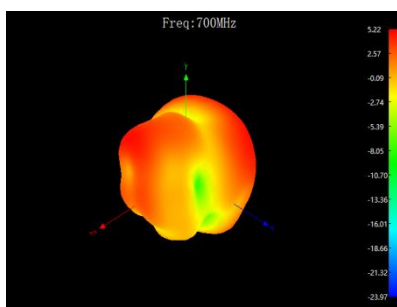
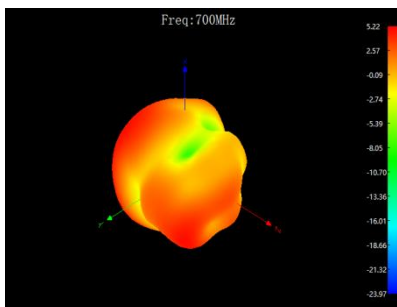
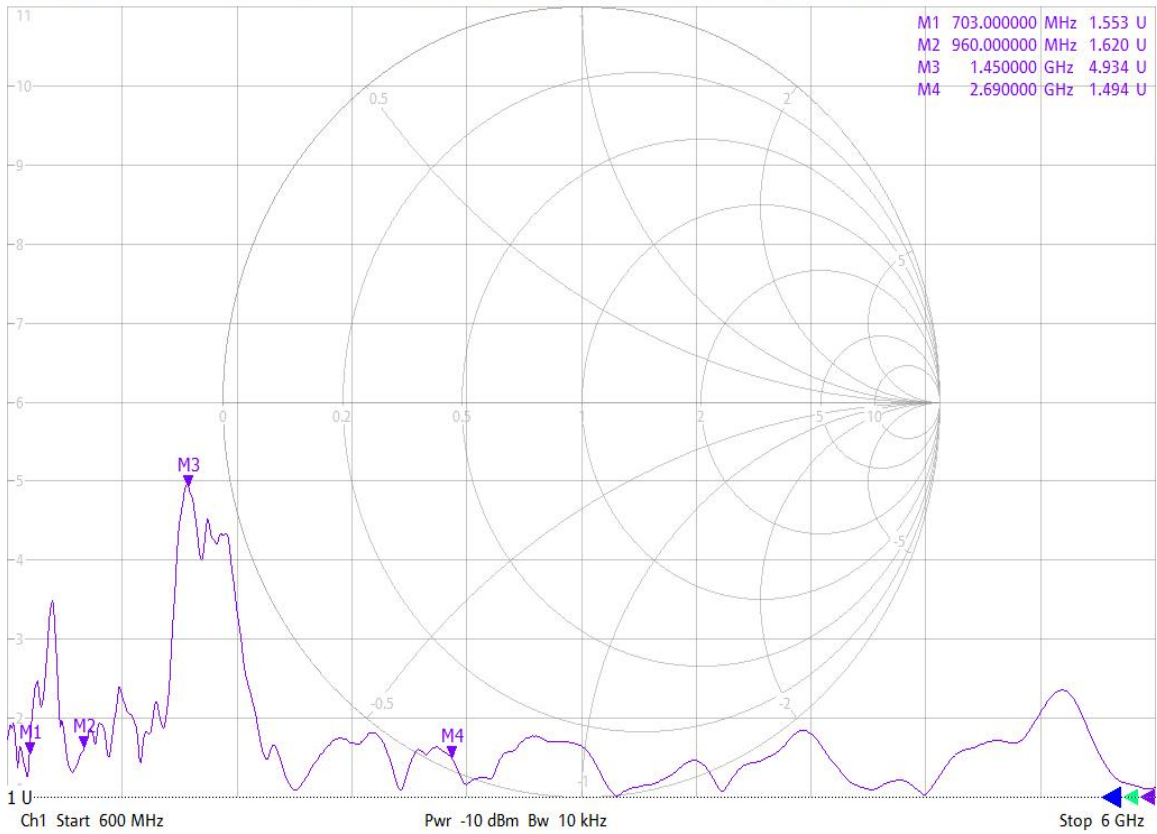


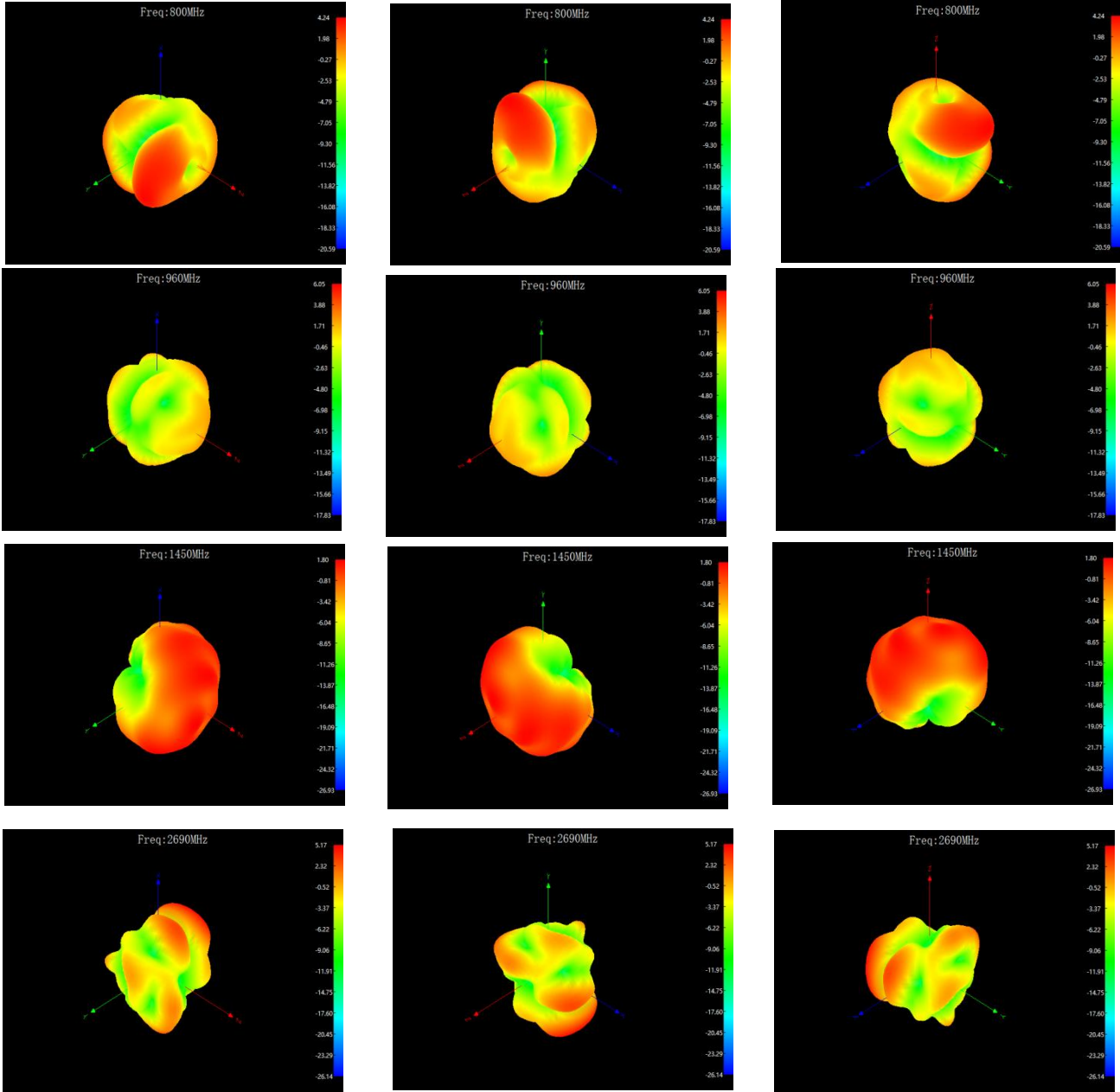
ANT5

2/16/2023 10:55:07 AM
1328.5170K92-100227-Mv

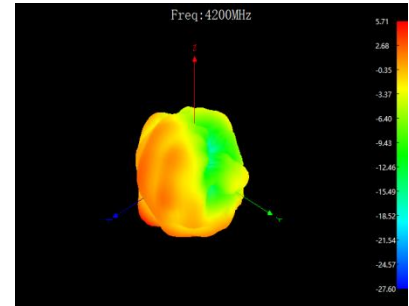
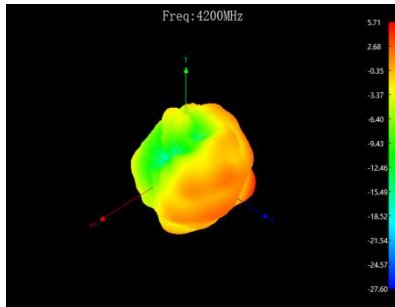
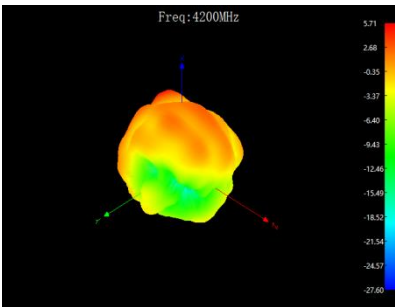
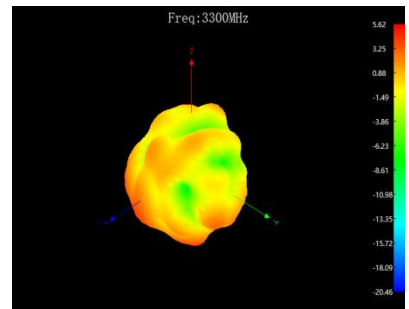
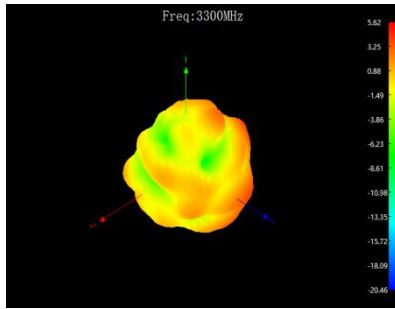
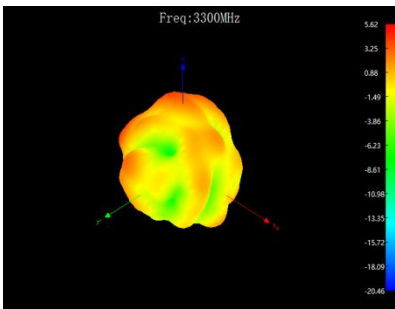
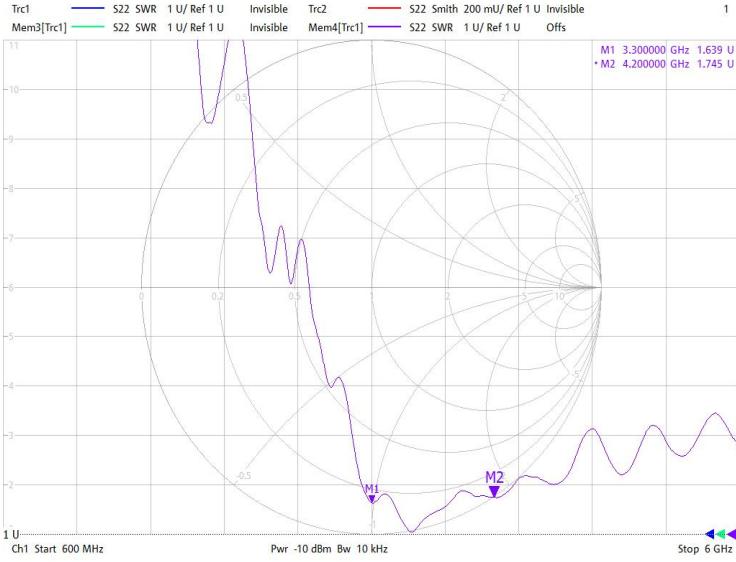
Trc1 — S22 SWR 1 U/ Ref 1 U Invisible Trc2 — S22 Smith 200 mU/ Ref 1 U Invisible
Mem3[Trc1] — S22 SWR 1 U/ Ref 1 U Invisible Mem4[Trc1] — S22 SWR 1 U/ Ref 1 U Offs

1





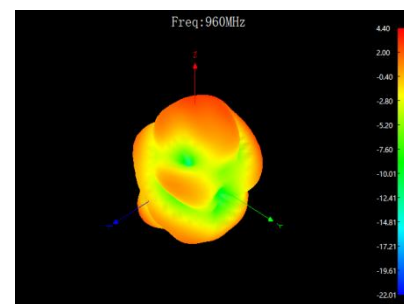
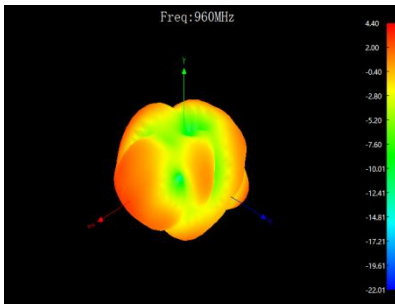
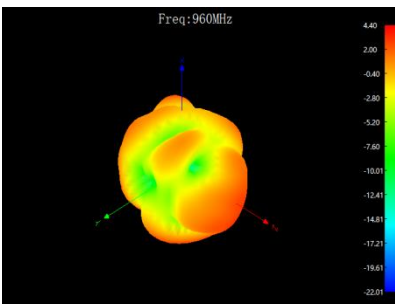
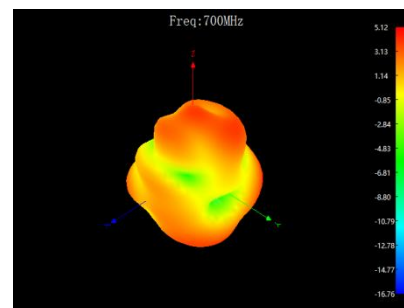
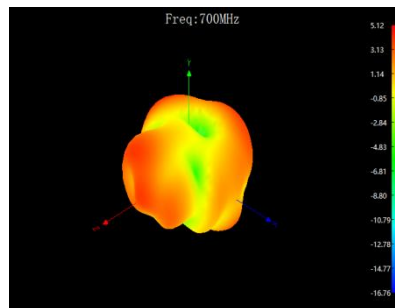
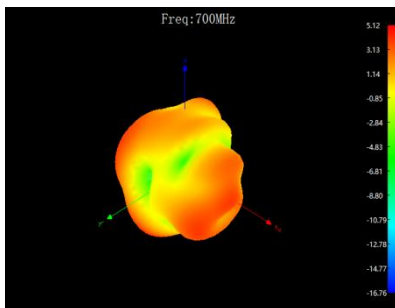
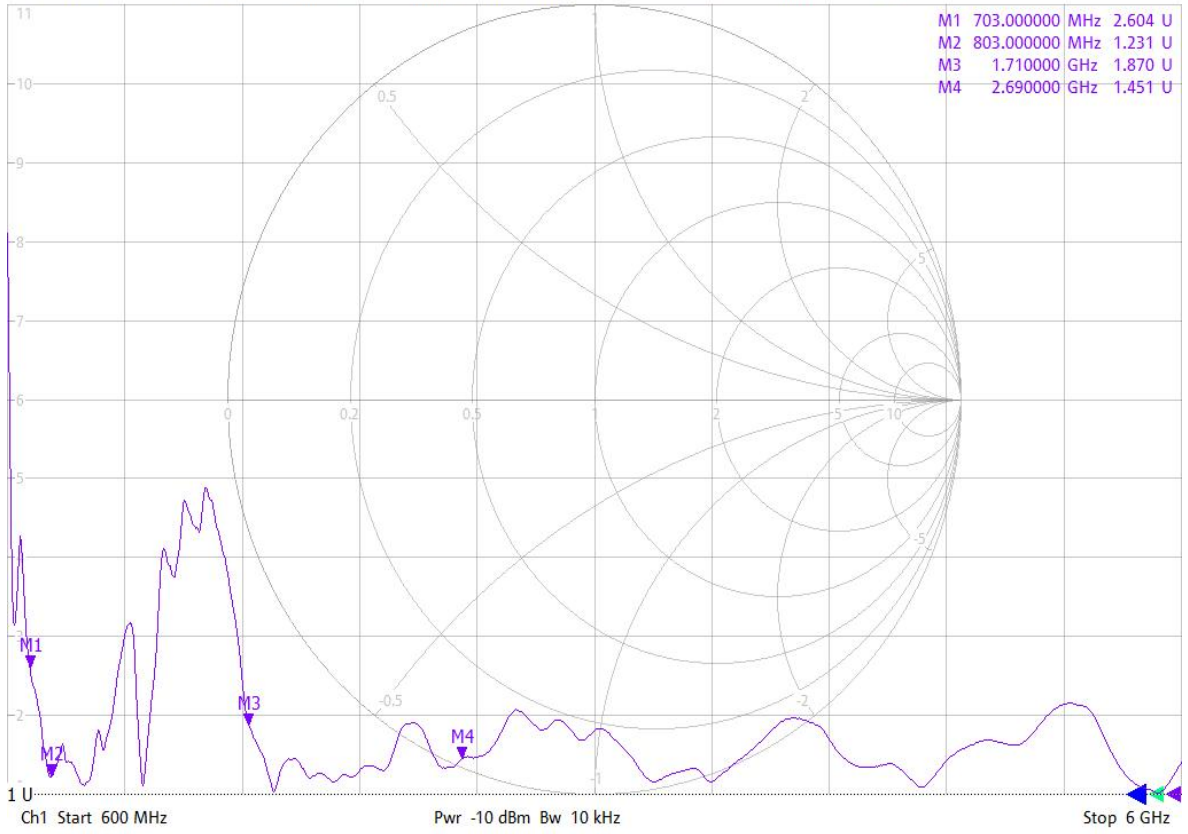
ANT6

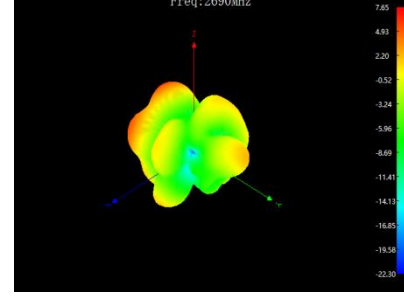
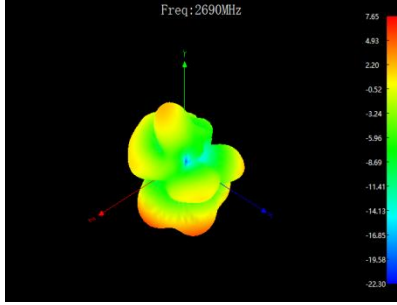
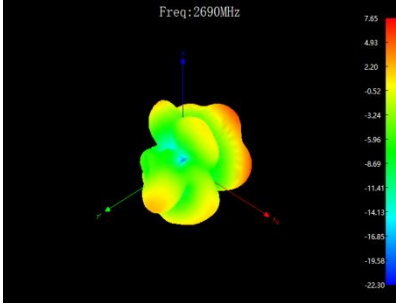
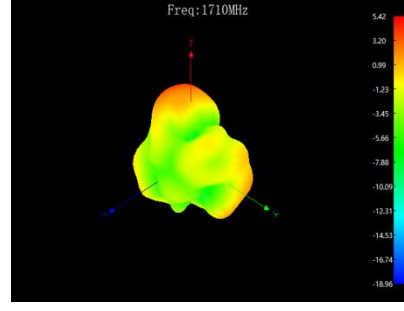
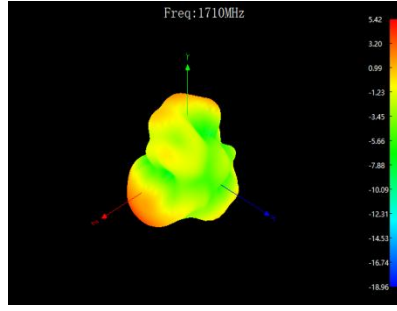
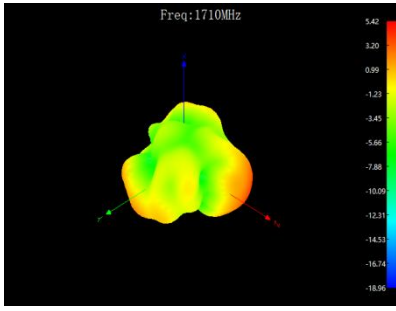


ANT7

Trc1 S22 SWR 1 U/ Ref 1 U Invisible Trc2 S22 Smith 200 mU/ Ref 1 U Invisible
Mem3[Trc1] S22 SWR 1 U/ Ref 1 U Invisible Mem4[Trc1] S22 SWR 1 U/ Ref 1 U Offs

1

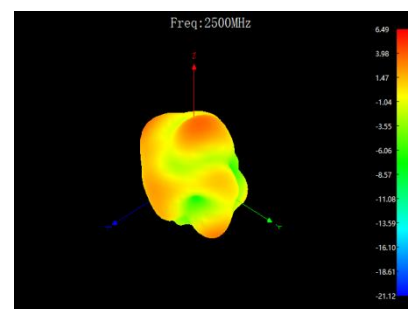
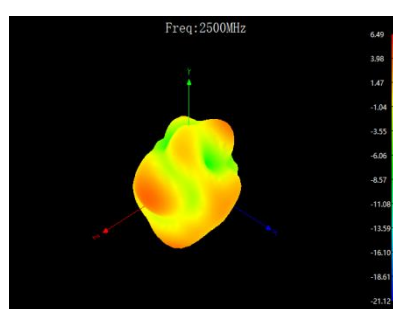
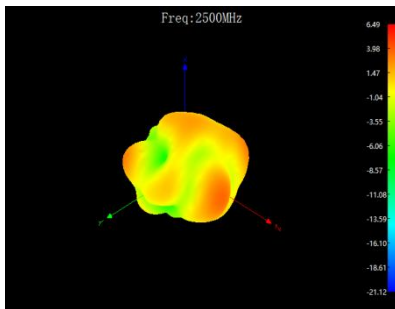
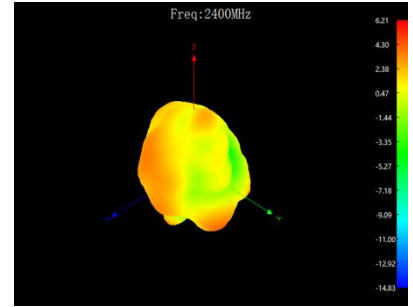
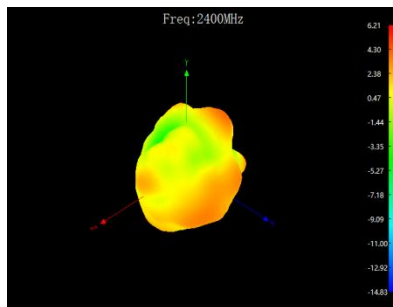
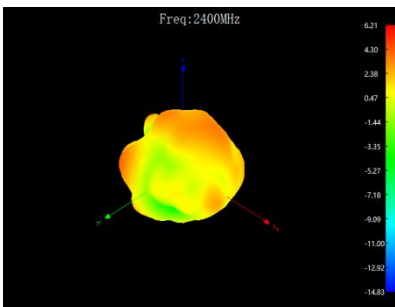




W1

Trc1 S22 SWR 1 U/ Ref 1 U Invisible Trc2 S22 Smith 200 mU/ Ref 1 U Invisible
Mem3[Trc1] S22 SWR 1 U/ Ref 1 U Invisible Mem4[Trc1] S22 SWR 1 U/ Ref 1 U Offs

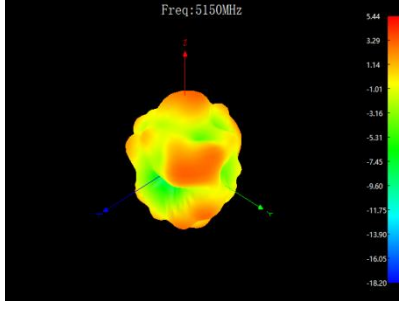
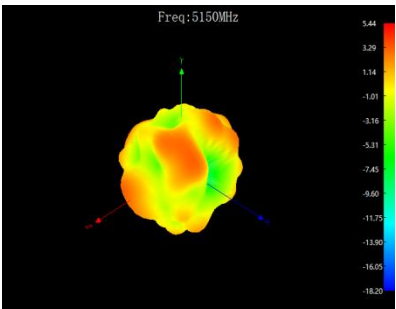
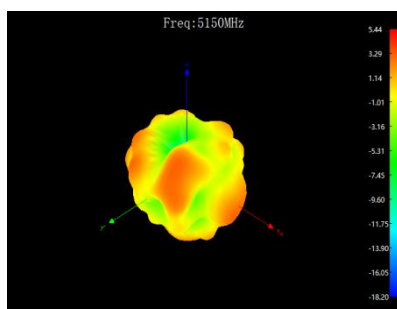
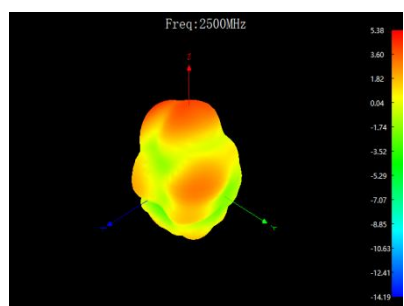
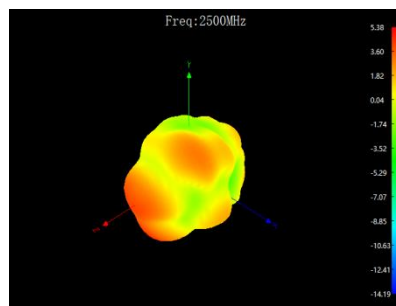
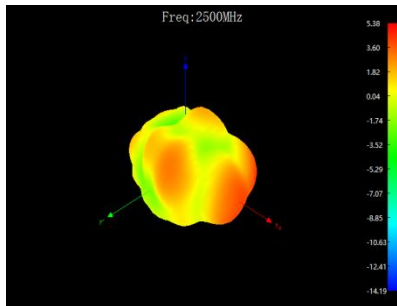
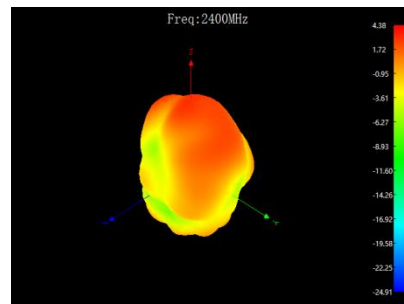
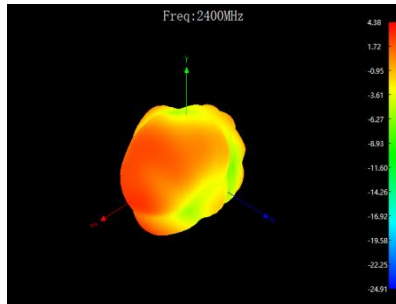
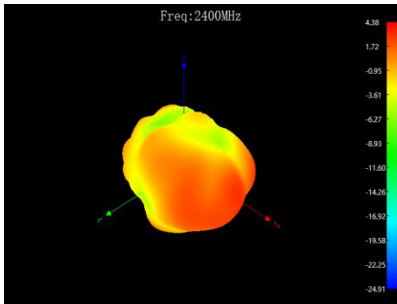
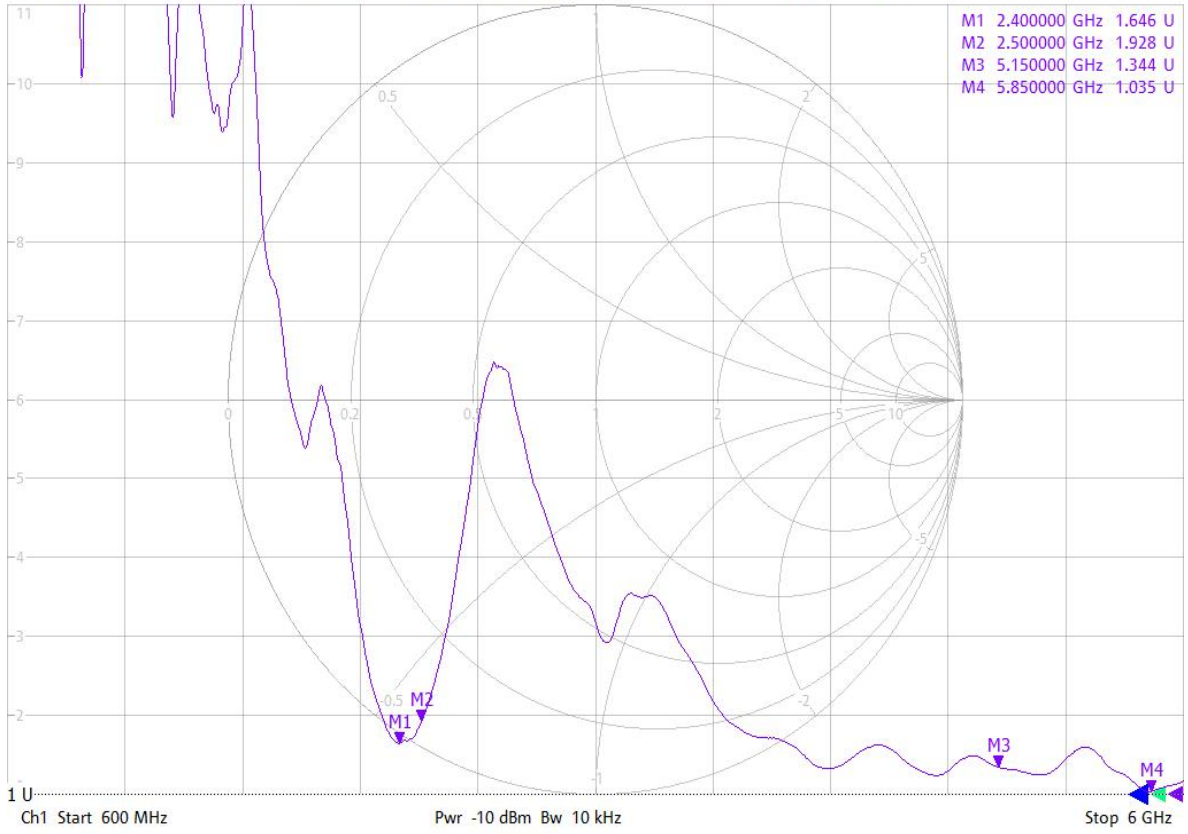
1

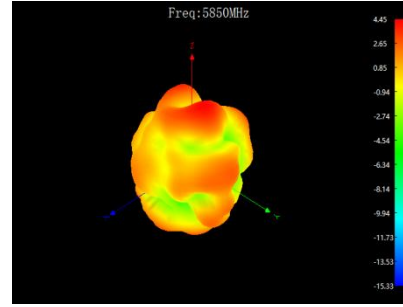
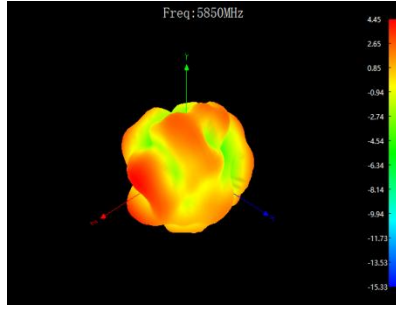
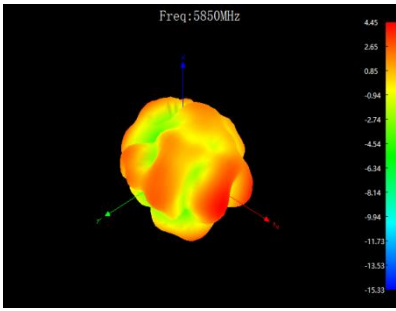


W3

Trc1 S22 SWR 1 U/ Ref 1 U Invisible Trc2 S22 Smith 200 mU/ Ref 1 U Invisible
 Mem3[Trc1] S22 SWR 1 U/ Ref 1 U Invisible Mem4[Trc1] S22 SWR 1 U/ Ref 1 U Offs

1



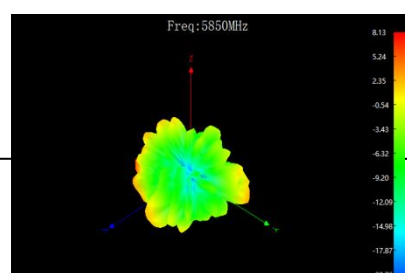
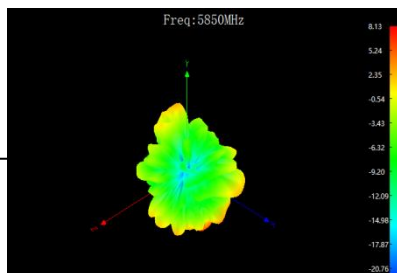
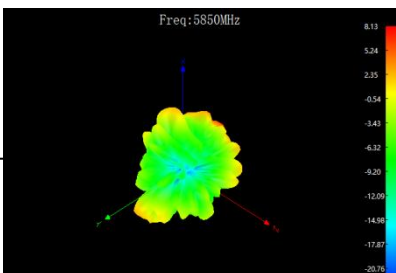
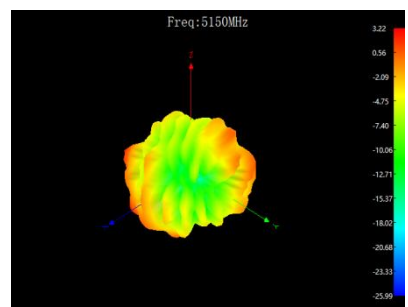
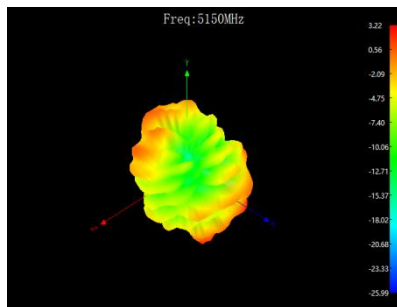
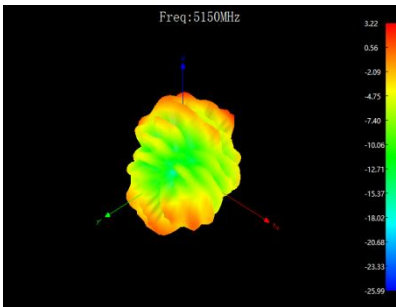
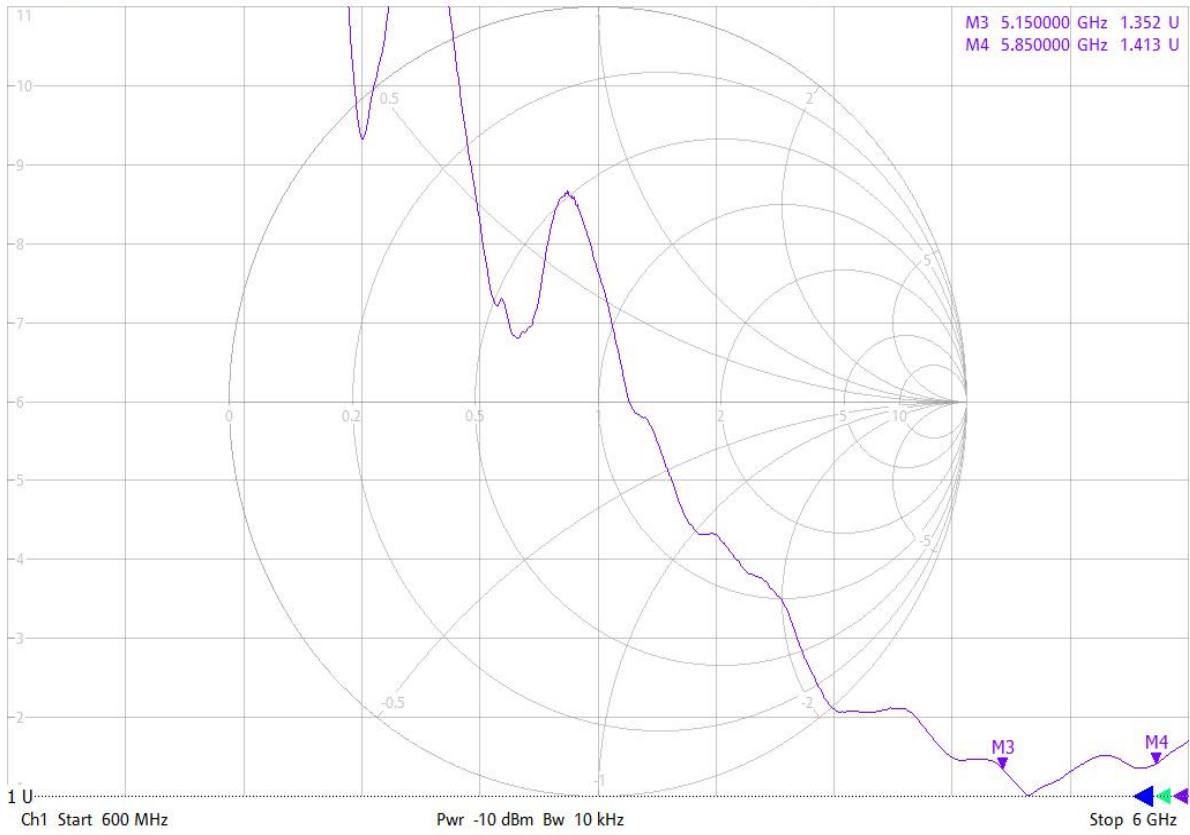


W4

2/16/2023 10:50:59 AM
1328.5170K92-100227-Mv

Trc1 — S22 SWR 1 U/ Ref 1 U Invisible Trc2 — S22 Smith 200 mU/ Ref 1 U Invisible
Mem3[Trc1] — S22 SWR 1 U/ Ref 1 U Invisible Mem4[Trc1] — S22 SWR 1 U/ Ref 1 U Offs

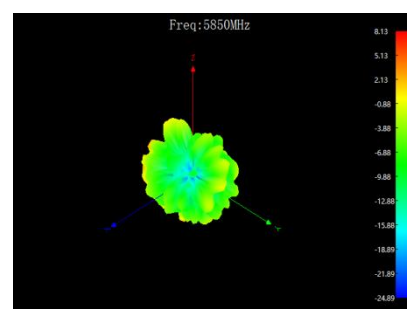
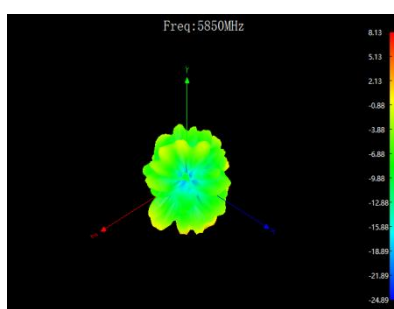
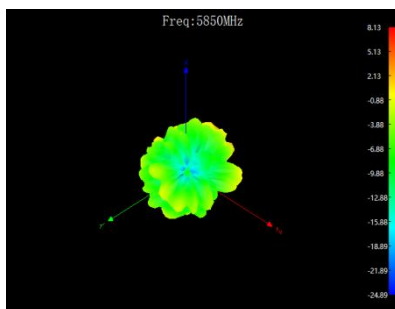
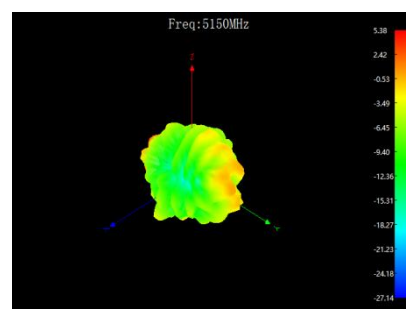
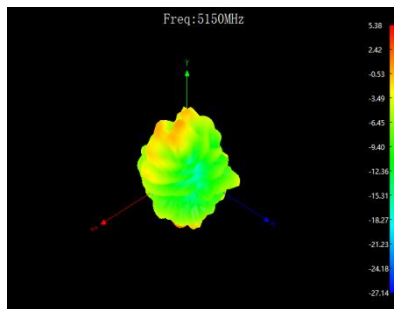
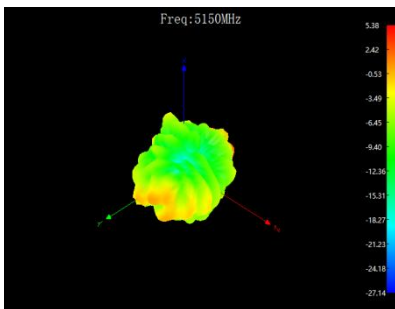
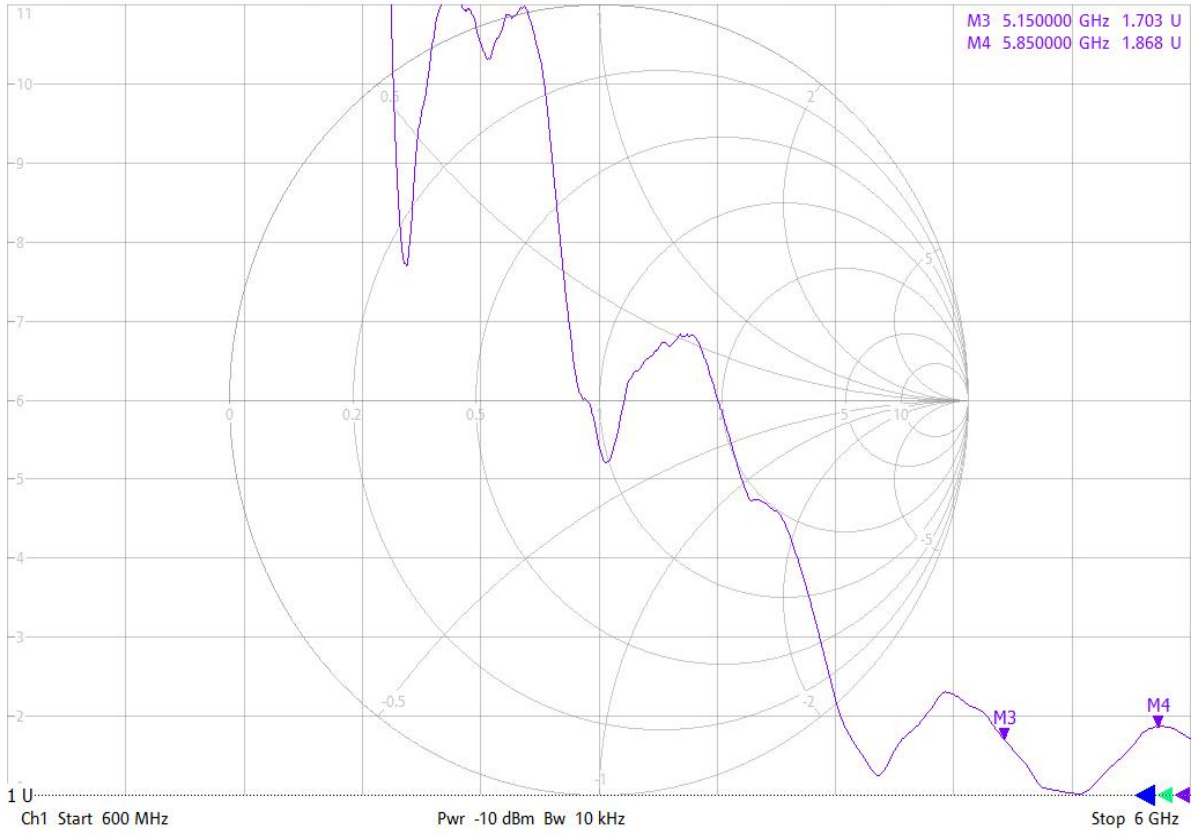
1



W5

2/16/2023 10:51:46 AM
1328.5170K92-100227-Mv

Trc1 S22 SWR 1 U/ Ref 1 U Invisible Trc2 S22 Smith 200 mU/ Ref 1 U Invisible 1
Mem3[Trc1] S22 SWR 1 U/ Ref 1 U Invisible Mem4[Trc1] S22 SWR 1 U/ Ref 1 U Offs



CUSTOMER' S P/N			DRAWING NO	
PREPARED BY	CHECKEDBY	APPROVAL BY	S.R.NO	
马维华			DATE:	2024.1.17