

Quick Guide



nanOHIFI

nanOHIFI

Safety & Warnings



CAUTION : To reduce the risk of electric shock, do not remove cover. There is no user serviceable part inside. Refer the service to a qualified personnel. This marking placed at the bottom of the unit.



This sign is intended to alert/warn the users to the presence of DANGEROUS VOLTAGE inside the unit that may causing the electric shock.



This sign is intended to alert/warn the users to the presence of the important instruction about operating, maintenance and servicing in the literature that accompanying the unit.

WARNING : To reduce the risk of fire or electric shock, do not expose this apparatus to rain or moisture.

AVERTISSEMENT : PUR ÉVITER LE RISQUE D'INCENDIE OU DE CHOCS ÉLECTRIQUES, NE PAS EXPOSER CET APPAREIL À LA PLUIE OU À L'HUMIDITÉ.

Battery shall not be exposed to excessive heat such as sunshine, fire, or the like.

Les piles ne doivent pas être exposées à de forte chaleur; tel qu'à la lumière du soleil, au feu ou autres choses de semblable.

CAUTION : Danger of explosion if battery is incorrectly replaced. Replace only with the same or equivalent type.

PRÉCAUTION : Danger d'explosion si les piles sont remplacées de façon incorrect. Remplacer les piles seulement par le même type de pile ou l'équivalent.



The unit uses a component that produces laser beam and it have been classified as class I. This marking placed at the bottom of the unit.



ENVIRONMENT INFORMATION : Please pay attention to the local regulation for the battery, packaging and ex-unit disposal. Avoid dispose of the battery to the common trash, separate the battery disposal as a chemical disposal.

Important Safety Instructions

1. Read these instructions.
2. Keep these instructions.
3. Heed all warnings.
4. Follow all instructions.
5. Do not use this apparatus near water.
6. Clean only with dry cloth.
7. Do not block any ventilation openings. Install in accordance with the manufacturer's instructions.
8. Do not install near any heat sources such as radiators, heat registers, stoves, or other apparatus (including amplifiers) that produce heat. Do not operate the unit on any extremely hot, cold, humid, dirty areas or near a heater. And do not expose the unit under direct sunlight. Place the unit at the temperature from 5°C to 35°C.

9. Protect the power cord from being walked on or pinched particularly at plugs, convenience receptacles, and the point where they exit from the apparatus. Unplug this apparatus during lightning storms or when unused for long periods of time. Grip the power-supply cord plug and do not pull the wire when connect or disconnect the power-supply cord.

10. Only use attachments or accessories specified by the manufacturer.

11. Use only with the cart, stand, tripod, bracket, or table specified by the manufacturer, or sold with the apparatus. When a cart is used, use caution when moving the cart or apparatus combination to avoid injury from tip over. Place the unit on a flat, stable and shake-free such table.

12. Refer all servicing to qualified service personnel. Servicing is required when the apparatus has been damaged in any way, such as power-supply cord or plug is damaged, liquid has been spilled or objects have fallen into the apparatus, the apparatus has been exposed to rain or moisture, does not operate normally, or has been dropped.

13. The AC/DC adaptor and apparatus shall not be exposed to dripping or splashing and that no objects filled with liquids, such as vases, shall be placed on apparatus. L'adaptateur AC/DC de l'appareil ne doit pas être obstrué ou doit être facilement accessible pendant son utilisation. Pour être complètement déconnecté de l'alimentation d'entrée, l'adaptateur AC/DC de l'appareil doit être déconnecté du secteur.

14. Mains plug is used as disconnect device and it should remain readily operable during intended use. In order to disconnect the apparatus from the mains completely, the mains plug should be disconnected from the mains socket outlet completely.

La prise du secteur est utilisé pour déconnecter le système. La prise du secteur ne doit pas être obstruée ou doit être facilement accessible pendant son utilisation. Pour être complètement déconnecté de l'alimentation d'entrée, la prise doit être débranchée du secteur.

15. **WARNING** : Changes or modifications to this unit not expressly approved by the party responsible for compliance could void the user's authority to operate the equipment.

16. **NOTE** : This equipment has been tested and found to comply with the limits for a class B digital device, pursuant to part 15 of the FCC rules. These limits are designed to provide reasonable protection against harmful interference in a residential installation. This equipment generates, uses, and can radiate radio frequency energy and, if not installed and used accordance with the instructions, may cause harmful interference to radio communications. However, there is no guarantee that interference will not occur in a particular installation. If this equipment does cause harmful interference to radio or television reception, which can be determined by turning the equipment off and on, the user is encouraged to try to correct the interference by one or more of the following measures :

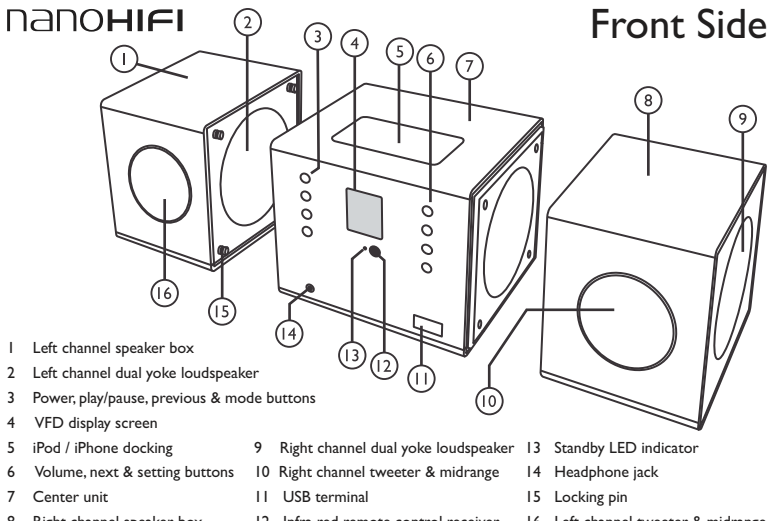
- a. Reorient or relocate the receiving antenna.
- b. Increase the separation between the equipment and receiver.
- c. Connect the equipment into an outlet on a circuit different from that to which the receiver is connected.
- d. Consult the dealer or an experienced Radio/TV technician for help.

17. This Class B digital apparatus complies with Canadian ICES-003.

Cet appareil numérique de la classe B est conforme à la norme NMB-003 du Canada.

nanOHIFI

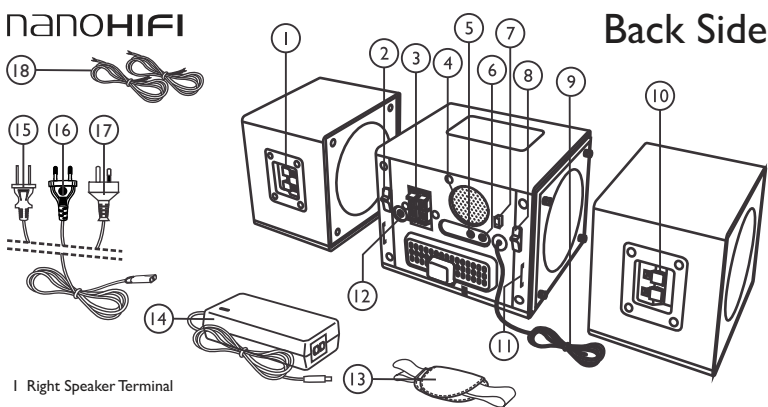
Front Side



- | | | |
|--|---------------------------------------|------------------------------------|
| 1 Left channel speaker box | 9 Right channel dual yoke loudspeaker | 13 Standby LED indicator |
| 2 Left channel dual yoke loudspeaker | 10 Right channel tweeter & midrange | 14 Headphone jack |
| 3 Power, play/pause, previous & mode buttons | 11 USB terminal | 15 Locking pin |
| 4 VFD display screen | 12 Infra red remote control receiver | 16 Left channel tweeter & midrange |
| 5 iPod / iPhone docking | | |
| 6 Volume, next & setting buttons | | |
| 7 Center unit | | |
| 8 Right channel speaker box | | |

nanOHIFI

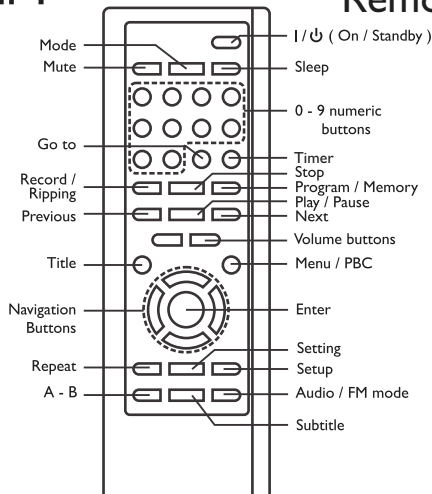
Back Side



- | | | |
|--------------------------|--------------------------|-------------------------------|
| 1 Right Speaker Terminal | 7 Power Socket | 12 Subwoofer Out Terminal |
| 2 Locking Switch | 8 Locking Switch | 13 Hand Strap |
| 3 Speaker Out Terminal | 9 FM Radio Cable | 14 External Switching Adaptor |
| 4 Ventilation | 10 Left Speaker Terminal | 15 American Power Cord |
| 5 Audio Out Terminal | 11 Hand Strap Holder | 16 Europe Power Cord |
| 6 Audio Input Terminal | | 17 Australian Power Cord |
| | | 18 Speaker Cables |

nanOHIFI

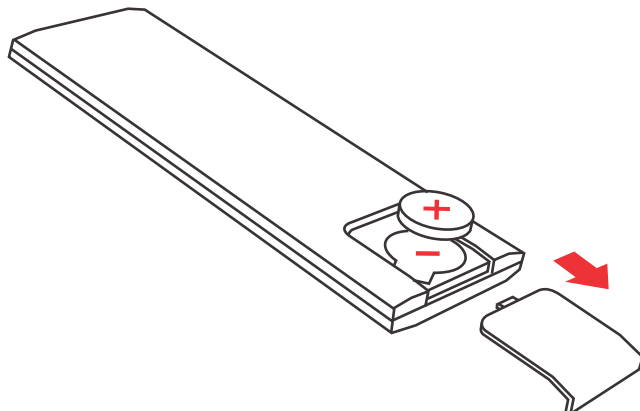
nanohIFI



Remote Control

nanohIFI

Remote Control

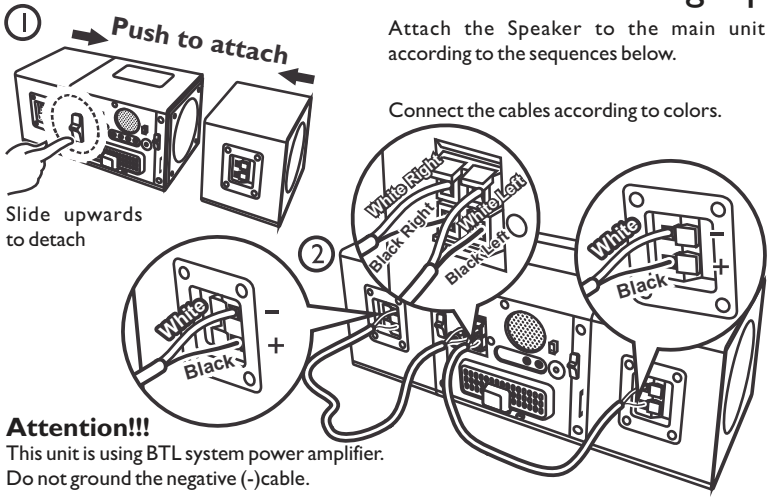


Battery

Use "CR2032" type or it's equivalent. Place the battery with correct polarity and keep it away from heat (sunlight, fire, etc) to avoid the battery damage

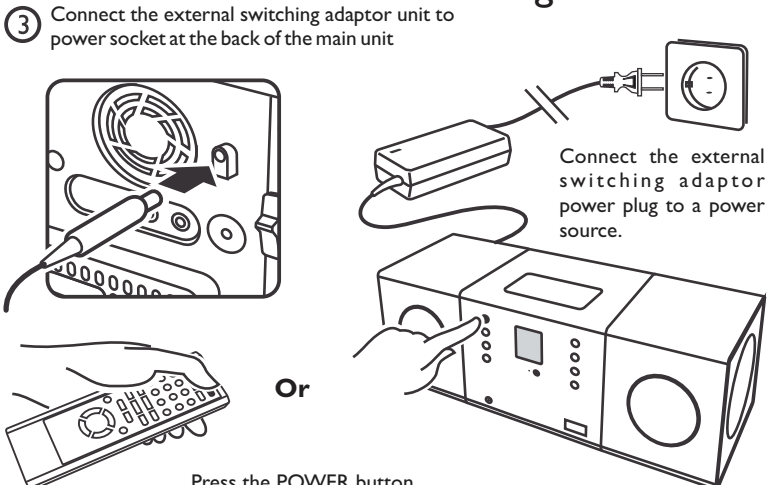
nanohIFI

Setting Up



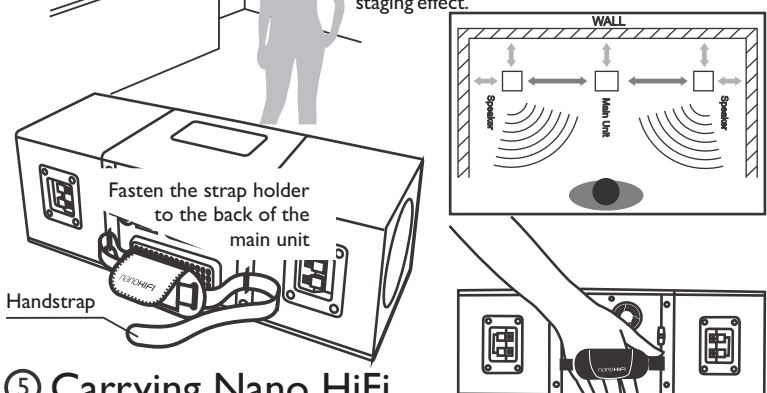
nanohIFI

Powering On the unit



④ Positioning

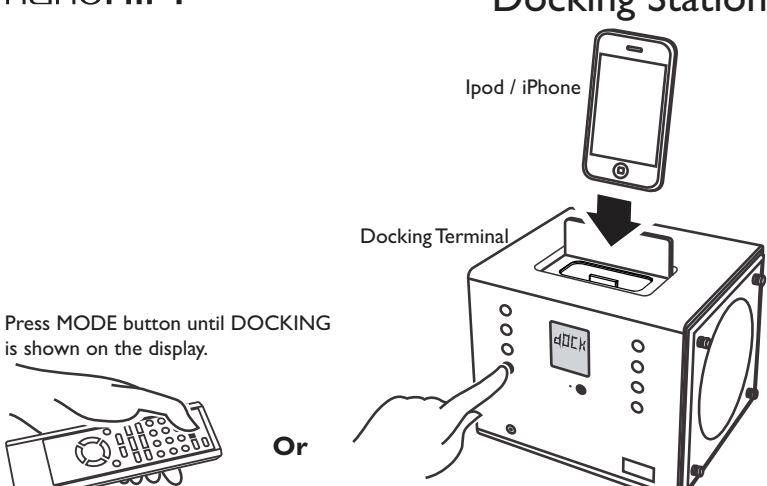
For maximum sound performance, place the Nano Hifi with it's back against a wall, with a little distance, and move the speakers apart. This will create excellent bass performance and superb staging effect.



⑤ Carrying Nano HiFi

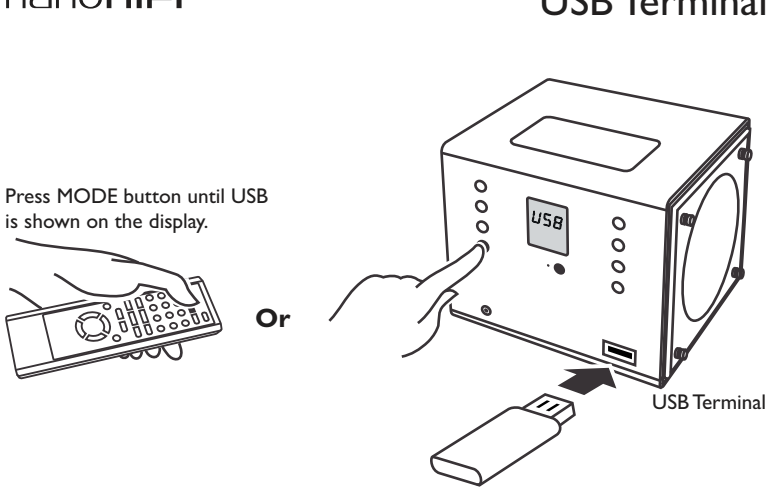
nanohIFI

Docking Station



nanohIFI

USB Terminal



nanohIFI

Connecting with Laptop / Notebook / PC

