

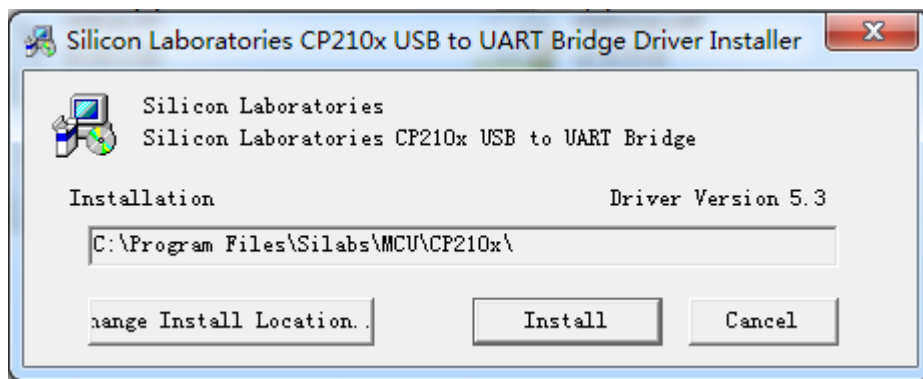
ZIGBEE network operating instructions

1. PC with Zigbee module, plug in the computer corner has the following tips, the diagram below:

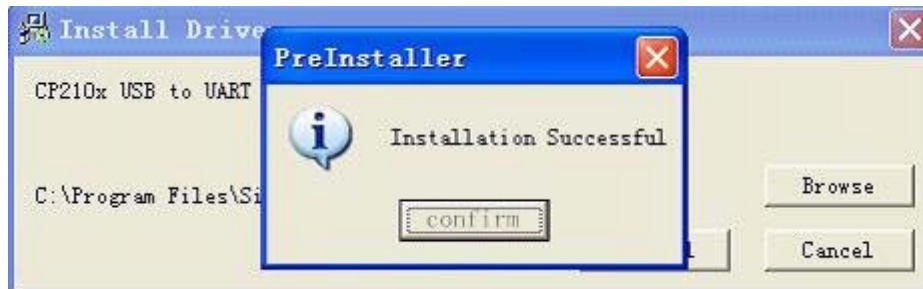


2. Install the driver, the following figure

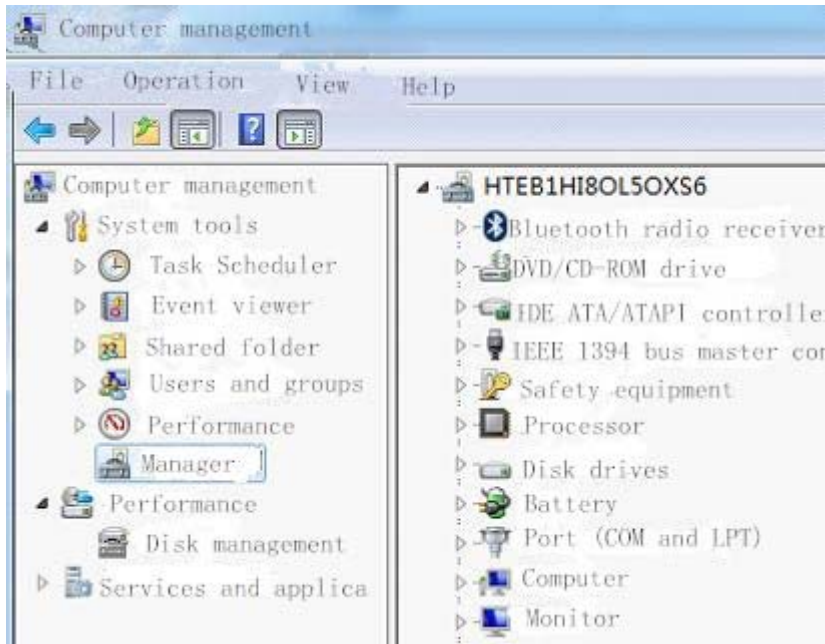
Open the "CP210x driven" file, double-click the file under "CP210xVCPInstaller. Exe file, click on the "Install ", as follows;



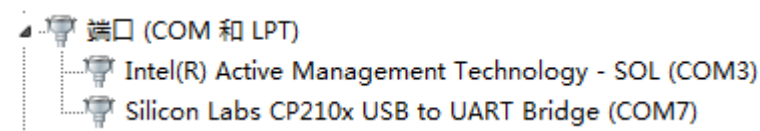
Click on the "ok" of the displayed after the installation is successful, after the driver installation is complete, as follows:



1、 Check the COM, the right mouse button click on the "computer", then click "management", select "device manager", the following figure:



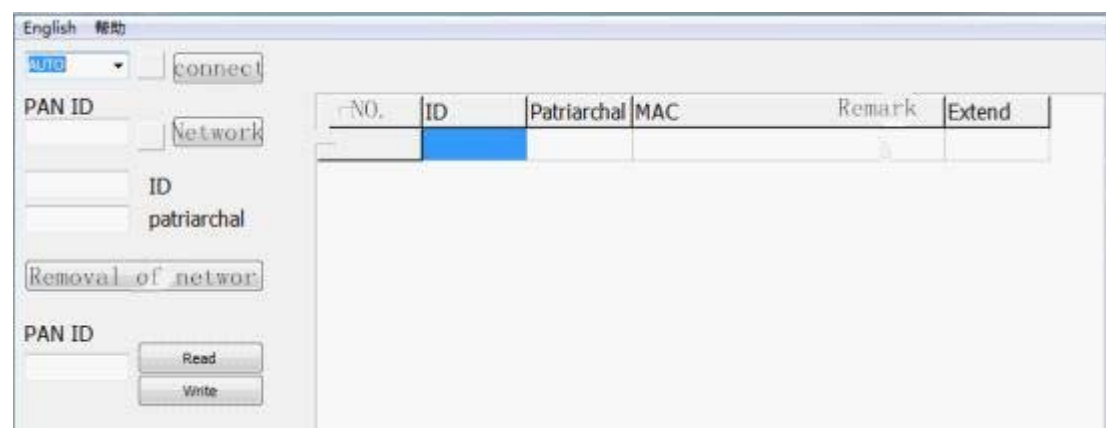
After opening the "port (COM and LPT)" item, see “Silicon Labs CP210x USB to UART Bridge (COM7)” Words, COM7 is our the port to be used.



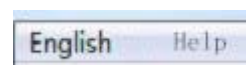
Open the "projectorWLAN. Exe file (note: if it is Windows 7 or Window8 system, select "run as administrator" and "run in compatibility mode")

Right click on the "projectorWLAN" | | attribute compatibility, as shown in figure:

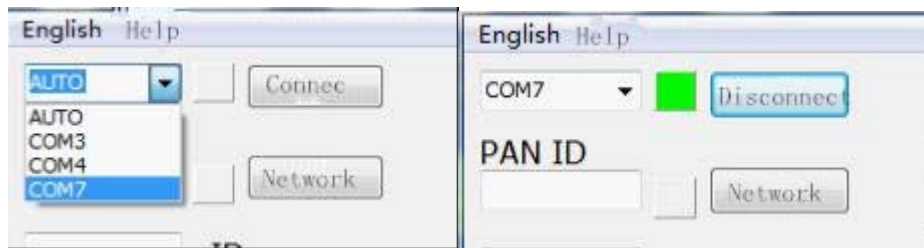
2、 Point after "ok" to open "projectorWLAN. Exe", appear below the window:



The menu bar can be switch in both Chinese and English:

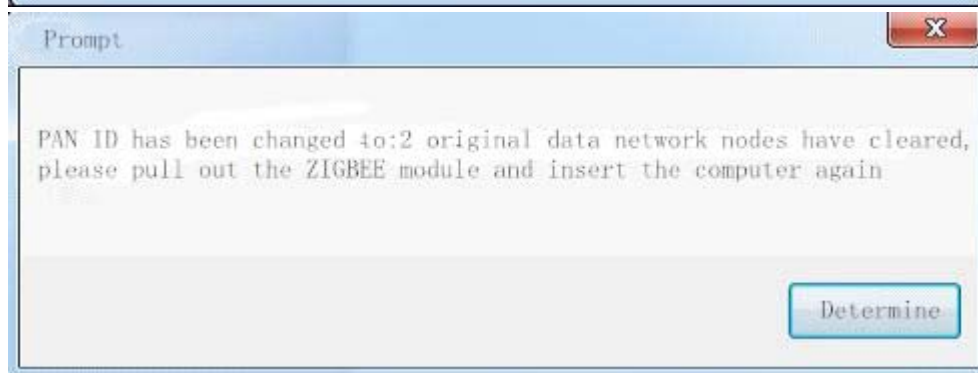
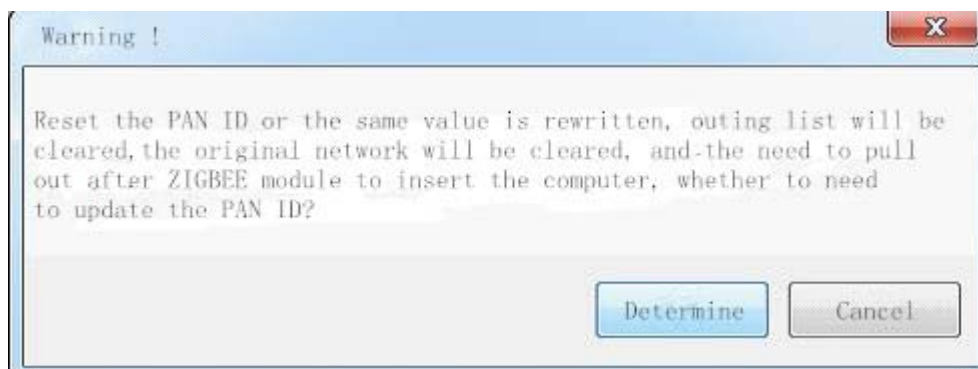
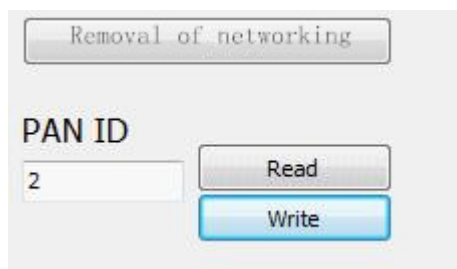


“AUTO” Set to "device manager" see COM7, selected to point "connection", after the green icon appears after the connection is successful, respectively, the following figure:



in the box on the left "the Read/Write" input "1-200" digital, from any one of the I type 2, for example, the following figure.

"Write", appear below the window, some "ok".

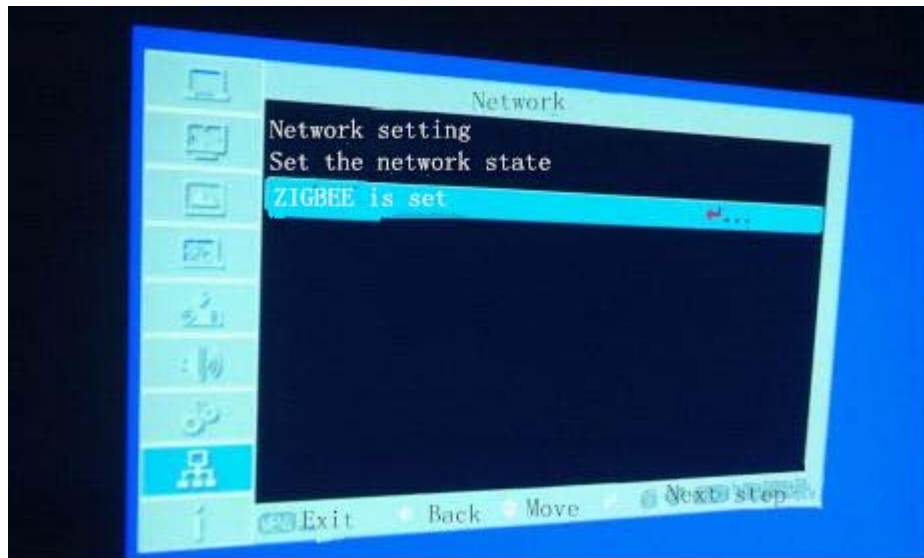


Point after "ok", pull out the Zigbee module, and then reinsert the computer.

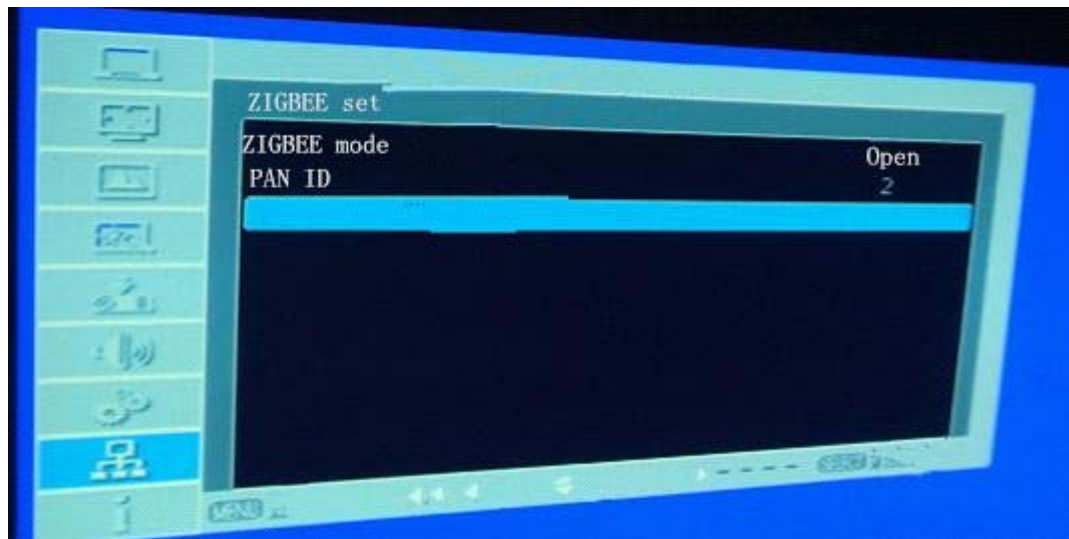
"Connected", then click "network" blank space under the PAN ID window will appear number 2, below:



- 3、 Open the projector, according to the remote control, find "Zigbee set", press "OK" to enter, as follows:



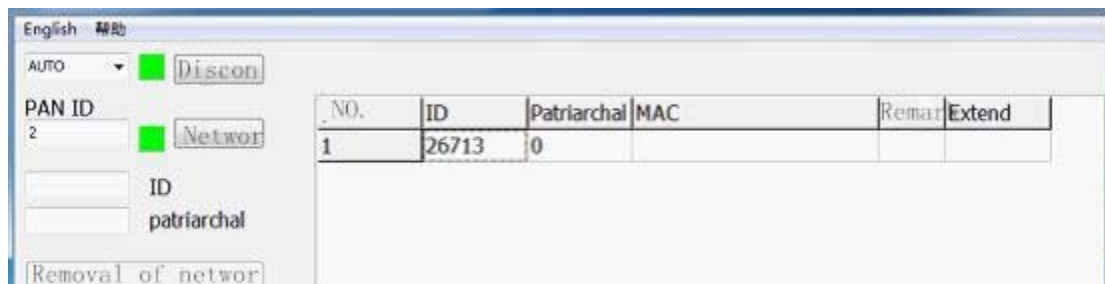
Sets the "Zigbee mode" to "open", press "OK" button on the remote control; Will be set to "PAN ID" and the computer terminal window under the same "2" and press "OK" button on the remote control, the following figure:



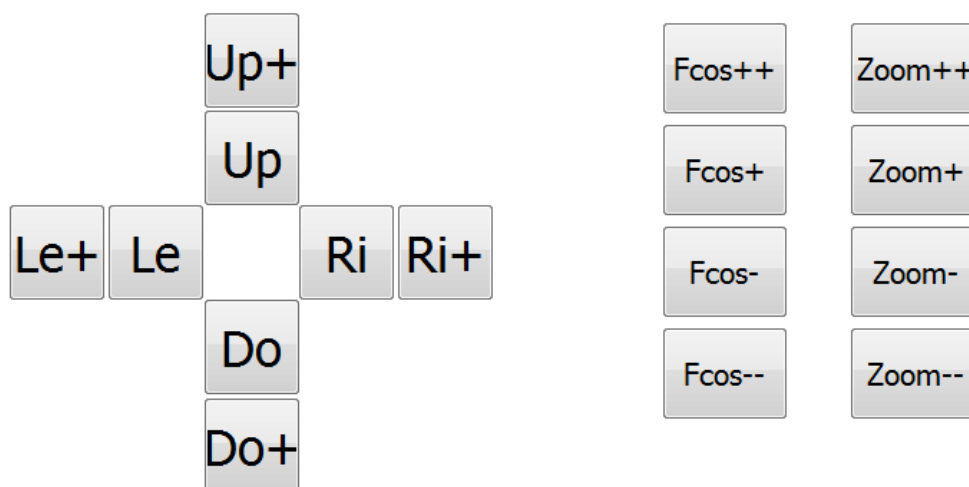
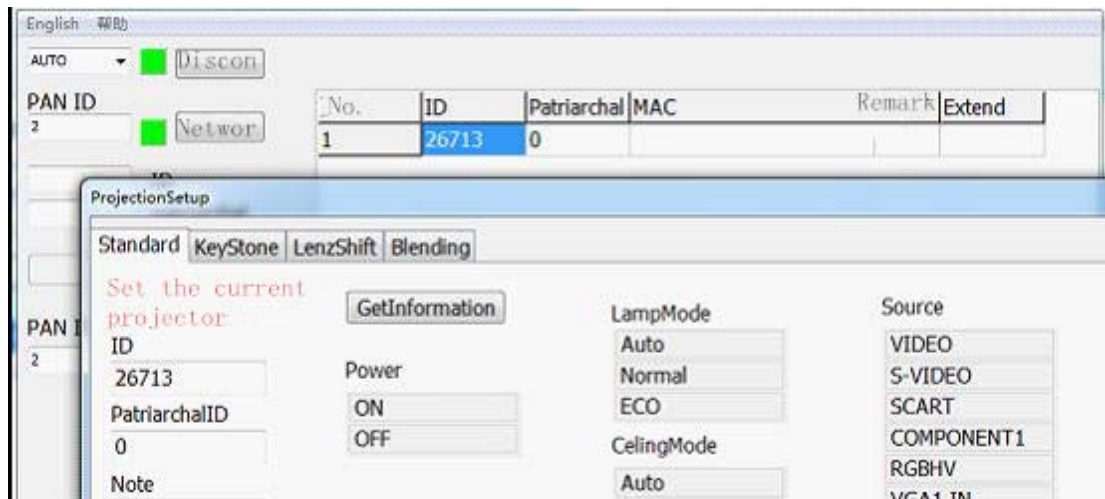
To connect to the Internet, select menu of "join Zigbee network" projector press "OK" button on the remote control, waiting for the interface, the following figure:



After joining the network in the computer side application window under the "ID" will automatically appear in a code, see below 26713:



6、 After the success of the network, double-click the window under the "26713" the projector to do "normal, KeyStone, LenzShift, fusion splicing" operation, the following figure:



When entering "Lenzshift", whenever shift in one direction, should be first "coarse" button operation, such as: the Up +, Do +, Le +, Ri +, then adjust "fine tuning" buttons, such as: Up,Do,Le,Ri.

FCC Notice

This device complies with Part 15 of the FCC Rules. Operation is subject to the following two conditions:

(1) This device may not cause harmful interference, and (2) this device must accept any interference received, including interference that may cause undesired operation.

NOTE 1: This equipment has been tested and found to comply with the limits for a Class B digital device, pursuant to part 15 of the FCC Rules. These limits are designed to provide reasonable protection against harmful interference in a residential installation. This equipment generates, uses and can radiate radio frequency energy and, if not installed and used in accordance with the instructions, may cause harmful interference to radio communications. However, there is no guarantee that interference will not occur in a particular installation. If this equipment does cause harmful interference to radio or television reception, which can be determined by turning the equipment off and on, the user is encouraged to try to correct the interference by one or more of the following measures:

- Reorient or relocate the receiving antenna.
- Increase the separation between the equipment and receiver.
- Connect the equipment into an outlet on a circuit different from that to which the receiver is connected.
- Consult the dealer or an experienced radio/TV technician for help.

NOTE 2: Any changes or modifications to this unit not expressly approved by the party responsible for compliance could void the user's authority to operate the equipment.