

# Super Switch Indoor Wireless Remote Control Wall Outlets

*The Remote Control for Living Room, Kitchen & Bedroom Lights, Lamps, Fans and More*

Item/Art. 770742

Model #: SSW2-3-3322

## **Set of (3) Indoor Outlets and (2) 3- Button Remote Controls**

### **Package Includes:**

- (3) Wireless Wall Outlet Receivers (Receiver Units)
- (2) 3-Button Hand-Held Remote Controls (Sender Units)
- (2) Type 23A 12V batteries

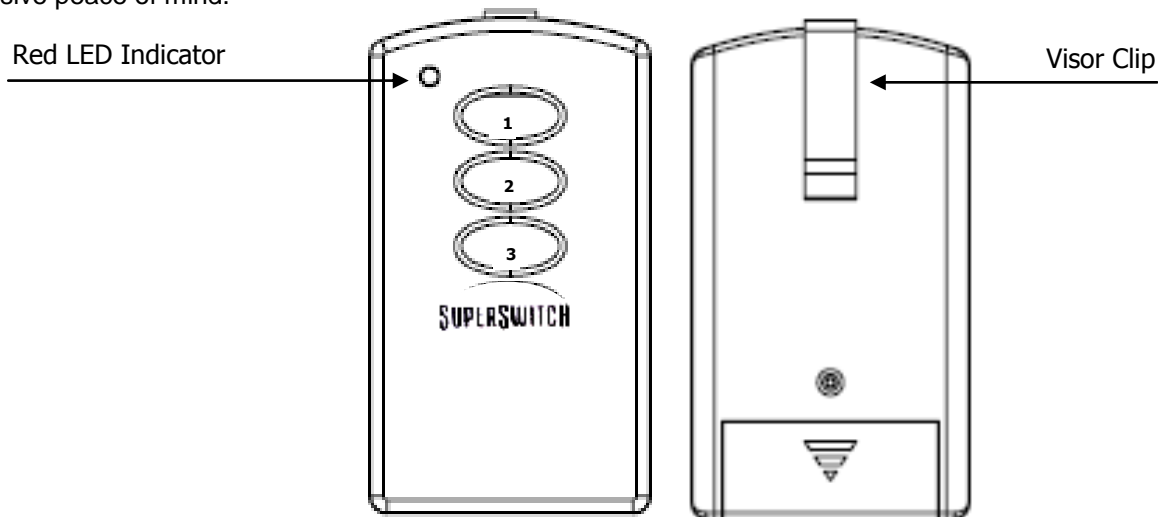
### **Features:**

The Super Switch operates on radio frequency and is not dependent on line of sight and will perform through walls, doors and floors up to 60 feet away. No rewiring is required.

### **Hand Held Remote Control:**

Red Transmit LED Indicator on Hand-Held Remotes lights up when buttons are pressed to confirm ON/OFF send command. Button on Hand-Held Remote Control corresponds to Wall Receiver Units (1, 2, 3).

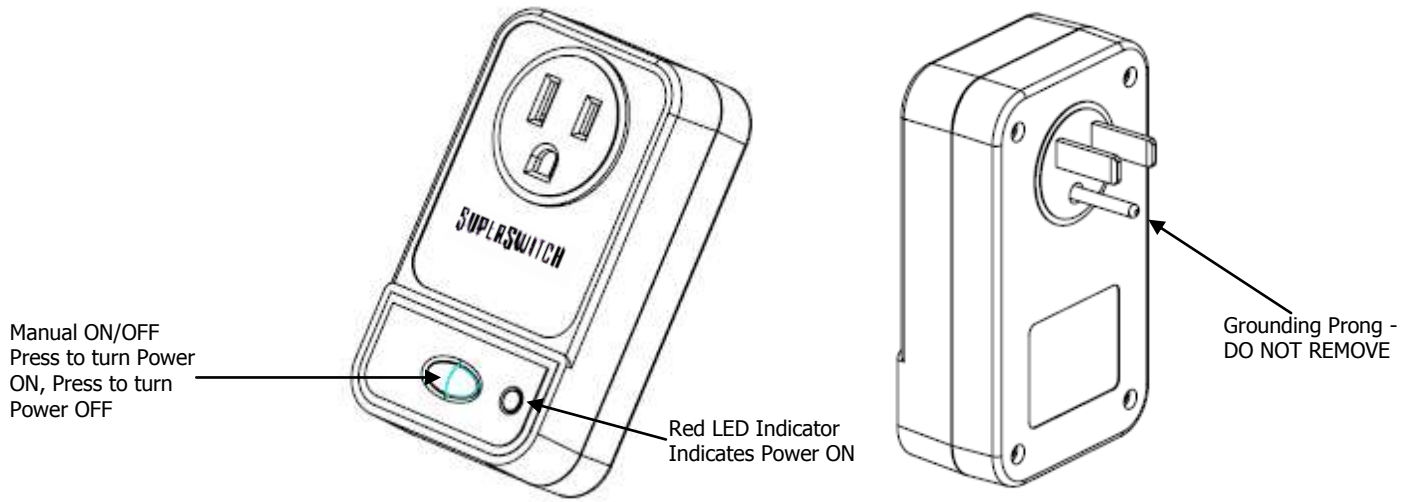
Clip on back of Hand-Held Remote Control is ideal to clip to car sun visor. Never enter a dark home again. Practical and inexpensive peace of mind.



### Wall Outlet Receivers:

**NOTE:** Wall Outlet Receivers feature 3-prong grounding plugs and are intended for use **ONLY** in 3-prong **INDOOR** household AC outlets. **DO NOT** remove the round grounding prong. If your household AC outlets do not accept 3-prong plugs then consult a qualified electrician to have your household AC outlets upgraded.

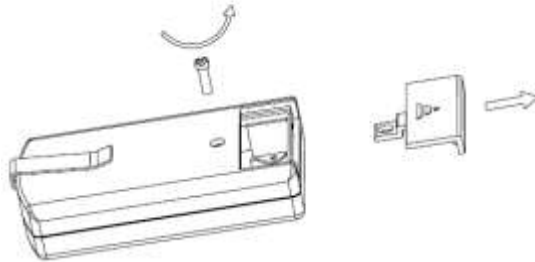
Red LED Indicators on wall Receiver Units indicate POWER SWITCHED ON at Wall Receiver Unit. Manual POWER ON/OFF Override button on wall Receiver Units allows user to manually turn Wall Receiver Units ON or OFF in the event the Hand-Held Remote cannot be located or if the battery in the Hand-Held Remote fails.



### Operation:

#### Remove Protective Tape From Battery Chamber.

Remove battery cover on Hand-Held Remote Control unit and remove protective tape. To do this: 1) Remove the battery compartment safety screw with a # 3 Phillips screwdriver. 2) Slide the battery compartment cover off. 3) Remove protective tape. 4) Replace battery compartment cover by sliding into place. 5) Reinstall the safety screw.



1. Remove Safety Screw with # 3 Phillips Screw Driver.
2. Slide Battery Cover Out and Off.
3. Remove Protective Tape.
4. Reinstall Battery Cover by sliding back into place
5. Reinstall Safety Screw. Do not over tighten.

### Plug in Wall Receiver Units.

Plug the individual Wall Receiver Unit (s) into any standard 3-prong AC **indoor** wall outlet.

### Operation and Safety.

Use only 1 Super Switch Wall Receiver Unit per AC outlet. A distance of 24 inches should be maintained between individual Wall Receiver Units. Do not overload individual Super Switch Wall Receiver unit beyond 1000 watts. Maximum output load: 125V/60Hz/10A. **FOR INDOOR USE ONLY. DO NOT** use Super Switch to control TV ON/OFF Power. Super Switch is not recommended for use with computers and computer monitors. Super Switch is not a circuit overload protector and is not designed or warranted for this purpose. To adequately protect your valuable home electronics, use a commercially available and rated circuit overload protector.

### Wall Receiver Unit Function.

**ON/OFF Button (s).** The power control button on the front of the wall receiver unit is used to manually power the wall receiver **ON** when pressed and **OFF** when pressed again. The unit can also be powered **ON** with the Hand-Held remote control. The **Red LED ON** light on the front of the wall receiver unit will illuminate when power is **ON**. If the Red LED (ON) does not illuminate check to be sure your indoor wall outlet is powered ON (check household circuit breakers, GFI Circuits).

### Remote Control Functions.

The Hand-Held Remote Control unit has a single **Red LED** indicator light that shows the radio signal has been sent. The Hand-Held Remote Control features three buttons marked **1, 2, and 3** respectively. Each button 1, 2, 3; corresponds to a specific wall receiver unit. Each of the individual receivers is clearly labeled 1, 2 or 3 to correspond to the buttons on the Hand-Held Remote Control unit. Pressing the buttons on the Hand-Held Remote Control turns the power **ON** or **OFF** at the corresponding Wall Receiver Unit.

### NOTE:

Do not overload individual Super Switch Wall Receiver unit beyond **1000 watts**. Before plugging any appliance into the Super Switch Wall Receiver, review the appliances wattage. If it exceeds 1000 watts, it should not be used with the Super Switch. Maximum output load: **125V/60Hz/10A**.

### Learning Function

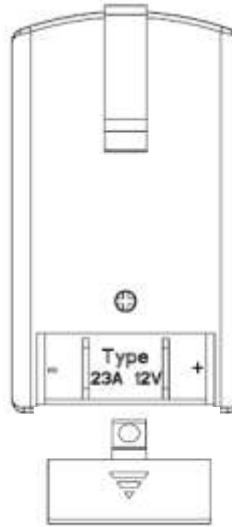
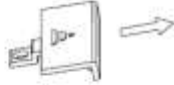
The Super Switch has the ability to be programmed to control multiple Wall Receiver Units with a single button on a remote control. For example, if you wish to turn all three Wall Receiver Units ON and OFF from button number one on the remote control, do the following:

Follow these easy steps:

1. Plug Wall Receiver Units into Indoor AC wall outlets.
2. Press and hold the manual POWER ON/OFF button on the first Wall Receiver Unit you wish to "learn" for 5 seconds.
3. Release the button on the Wall Receiver Unit when the red POWER indicator LED on the Wall Receiver Unit begins blinking.
4. Again, press and hold the manual POWER ON/OFF button on the first Wall Receiver Unit for 5 seconds until the red POWER indicator LED on the Wall Receiver Unit begins blinking.
5. Point the Hand-Held remote control at the Wall Receiver Unit on the wall and press the button on the Hand Held Remote Control (1, 2, or 3) that you want to correspond to the Wall Receiver Unit (s). The red POWER indicator LED on the Hand Held Remote Control flashes once when it has learned the button position that corresponds to the Wall Receiver Unit.
6. Press the manual POWER ON/OFF button on the Wall Receiver Unit one time or wait for 8 seconds to finish the programming process.
7. Repeat this process for each Wall Receiver Unit that you want to be controlled from the same Hand Held Remote control button.

## Battery Replacement/Storage

**Replacement:** If operation of the wall receiver units becomes erratic, it may be necessary to replace the battery in the hand-held remote sending unit. To do this, first remove the battery compartment safety screw with a # 3 Phillips screwdriver and slide the battery compartment cover off. Next, remove the depleted battery and discard according to local ordinances. Be sure to correctly reinstall the new battery. The negative (-) end of the battery (marked on the battery label) is inserted into the battery compartment first toward the spring marked with the negative (-) symbol indicated in the battery compartment. Slide positive (+) end of battery down next; into the battery compartment. Replace battery compartment cover by sliding into place. Reinstall the safety screw. Replace with Type 23A 12V battery only.



Battery Cover Removed Showing Battery (Type 23A 12V) and Battery (-) and (+) Indicators Inside Battery Compartment. When installing new battery be sure to install negative (-) end first followed by positive (+) end.

- Remove Safety Screw with # 3 Phillips Screwdriver
- Slide Battery Cover Out.
- Remove Battery
- Install New Battery
- Reinstall Battery Cover and Safety Screw

**Storage:** If the hand-held remote control is to be stored and unused for an extended amount of time – 3 months or longer; it is recommended that the battery be removed. Follow the instructions for battery replacement and once removed, store the battery in a secure location. When the hand-held remote control is put back into use, reinstall the battery. There is no guarantee for battery life. If reinstalled battery fails to operate units correctly, user must replace battery with Type 23A 12V battery.

## FCC Notices:

Warning: Changes or modifications to this unit not expressly approved by the party responsible for compliance could void the user's authority to operate the equipment.

NOTE: This equipment has been tested and found to comply with the limits for a Class B digital device, pursuant to Part 15 of the FCC Rules. These limits are designed to provide reasonable protection against harmful interference in a residential installation. This equipment generates, uses and can radiate radio frequency energy and, if not installed and used in accordance with the instructions, may cause harmful interference to radio communications.

However, there is no guarantee that interference will not occur in a particular installation. If this equipment does cause harmful interference to radio or television reception, which can be determined by turning the equipment off and on, the user is encouraged to try to correct the interference by one or more of the following measures:

- ☐ Reorient or relocate the receiving antenna.
- ☐ Increase the separation between the equipment and receiver.
- ☐ Connect the equipment into an outlet on a circuit different from that to which the receiver is connected.
- ☐ Consult the dealer or an experienced radio/TV technician for help.

This device complies with Part 15 of the FCC Rules. Operation is subject to the following two conditions : (1) this device may not cause harmful interference, and (2) this device must accept any interference received, including interference that may cause undesired operation.

## 30 Day Limited Warranty

This product (battery excluded) is warranted to the original purchaser for a period of 30 days from date of purchase. Proof of purchase is required to obtain warranty service. Warranty is for replacement only. No service parts are available for these products. No other warranties are expressed or implied. Batteries, battery life or battery power cycles are not covered under this warranty. For warranty service, please contact Blackstone International Customer Service: 1-888-525-7969 or [customerservice@blackstoneltd.com](mailto:customerservice@blackstoneltd.com). Monday – Friday 8:30 AM – 5:00 PM. English Only.

**Lose a Hand-Held Remote? Need another Wall Receiver Unit?**

Please contact Blackstone International Customer Service: 1-888-525-7969 or [customerservice@blackstoneltd.com](mailto:customerservice@blackstoneltd.com).  
Monday – Friday 8:30 AM – 5:00 PM. English Only.

**Made in China**

**Distributed By:**

**Blackstone International, LTD. 2018 Lord Baltimore Drive, Baltimore, MD 21244 USA**

**Imported By:**

**Costco Wholesale Corporation, PO Box 34535, Seattle, WA 98124-1535 USA**

**Manufacturer:** Zhongshan Grand Enterprise Co., Ltd

**Address:** No. 2 Yuhui North Road, Zone B, Maohui Industry, Henglan Town, Zhongshan City, Guangdong, China 528478

**Model:** CZ2003-2+3

**Rated:** 125V/60Hz/10A

**Date code:** 07/15/2013

©2013 The Blackstone International, LTD. logo is registered trademark of Blackstone International, LTD. All other brands and logos are trademarks or registered trademarks of their respective owners. Specifications are subject to change without notice

