

User Manual

bluetooth interphone

Model Name: V5

Brand Name: BTI

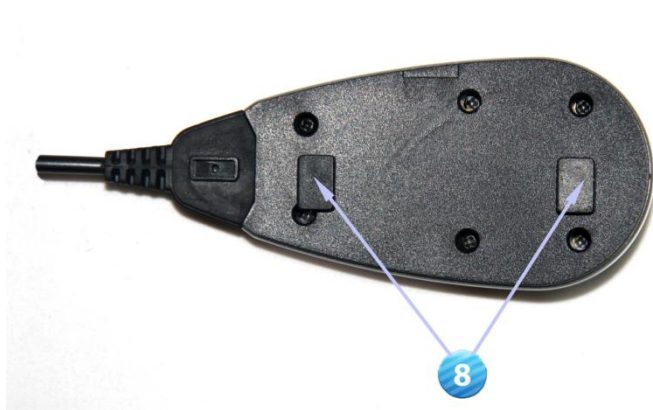
FCC ID: 2AAJ4-V5



1: Power on 2: Power off 3:Volume + 4:Volume - 5: FM radio on/Rider A
6:Rider B



7: Snap joint



8:Plug



Installation instruction



Find a proper location to fix the clamp



Install bluetooth interphone onto the clamp under instruction



Finished installation



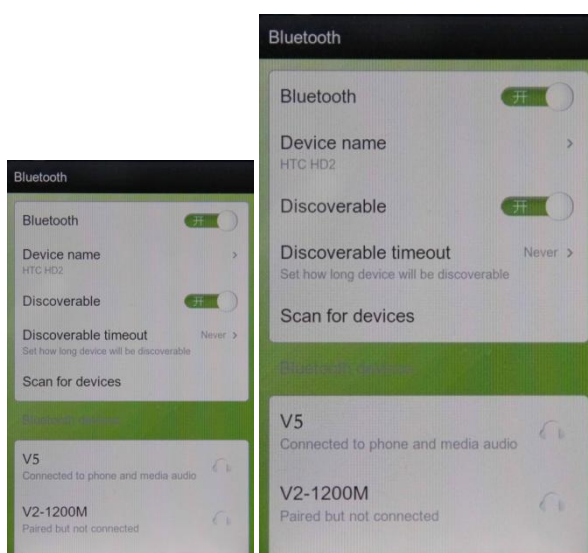
Earphone line connecting instruction



power on: press the power on button, approx. 2 seconds, until red light, and then blue light flash



Pairing with bluetooth equipment instruction



2: Pairing with cellphone/MP3/GPS, after power on, press key 1 about 3-5 seconds, with red and blue flash light, open the cellphone/MP3/GPS bluetooth function, when searching, see left photo, press connecting, pairing successful when red flash off, blue light flash rhythmically.

FM function: Bluetooth interphone power on,with earphone, press Rider A key for 3s.



Pairing with the other V2,each equipment has power on, 1) Press Rider A at the same time for 5-7s,till the red and blue light flash alternately. 2) Press either equipment Rider A,till red light off, blue light flash,at the searching situation. after 5-7 seconds,the other equipment red light off, blue light flash. pairing successful 3) Press either equipment Rider A,can talk with each other





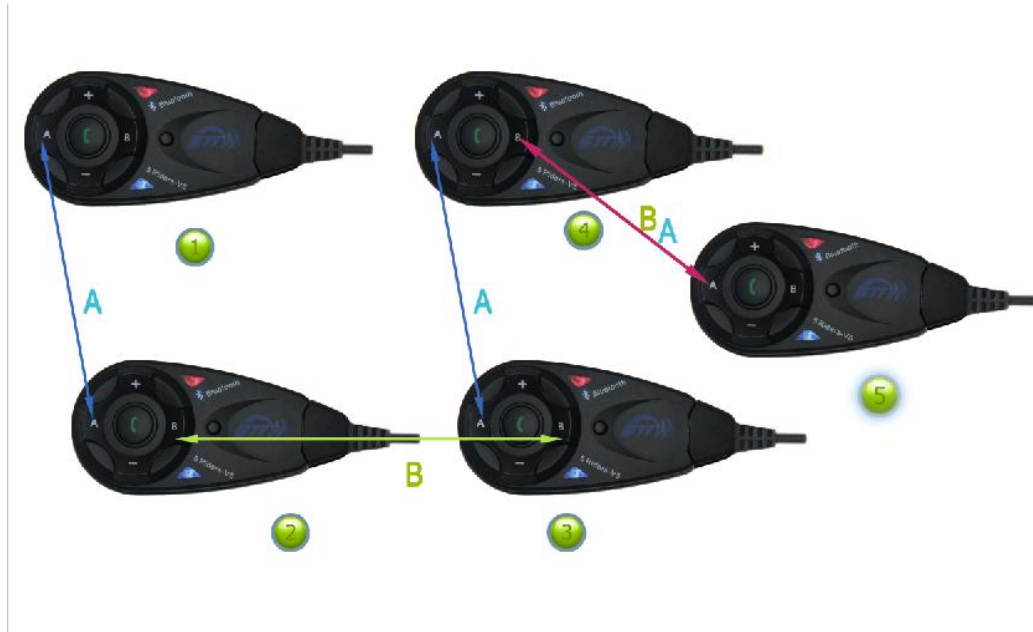
The red and blue flash appearance alternately

4 parties pairing:

- 1) Equipment 1 and 2 as pairs, 3 and 4 as pairs, and make them pairing as model A.
- 2) Choose 2 and 3 pairs as model B, press key Rider B for 3-5s, till the red and blue light flash alternately. press either key Rider B of equipment 2 or 3, till red light off, blue light flash, mean at the searching situation. after 5-7s, the other equipment red light off, blue light flash. connecting successful, press either key Rider B, equipment 2 and 3 pairing successful.
- 3) Press Rider A of equipment 1 or 4, four riders connecting, can talk to each other
- 4) Pairing equipment 4 and 5, press key Rider B of equipment 4 and Rider A of equipment 5 for 3-5s, red and blue light flash alternately, then press Rider B of equipment 4 (or Rider A of equipment 5, either is ok), till red light off and blue light flash, mean at the searching situation, after 5-7s, red light off, blue light flash, pairing successfully, then press Rider B of equipment 4 (or Rider A of equipment 5), 5 Riders can talk to each other at the same time.
- 5) Equipment 1 and 5, press Rider B till red and blue light flash alternately, equipment 1 and 5 connect to cellphone (see last page pairing to cellphone)

(PS: cancel the pairing of V4: press any one of the 4 equipment Rider A and Rider B after 3s, red and blue flash alternately, connecting cancellation)

Remark: when phone call, will receive priority automatically, and will back to 5 riders talking model after phone call finish, also automatically.



V2 paring instruction

Accessories



USB charger lead



Earphone



Clamp connected and installed unit



AC&USB charger

Important Regular Information

This device complies with part 15 of the FCC rules. Operation is subject to the following two conditions:

- (1) this device may not cause harmful interference, and
- (2) this device must accept any interference received, including interference that may cause undesired operation.

Changes or modifications to this unit not expressly approved by the party responsible for compliance could void the user's authority to operate the equipment.

RF Exposure Information:

FCC RF Exposure requirements: The highest SAR value reported under this standard during product certification for use next to the head with the minimum separation distance of 10mm is **0.479W/kg**. This transmitter must not be collocated or operating in conjunction with any other antenna or transmitter.