

Instruction



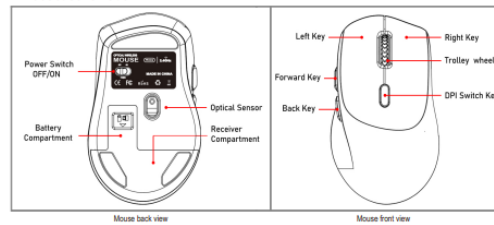
M002

2.4GHz Wireless Mouse

Technical Parameters:

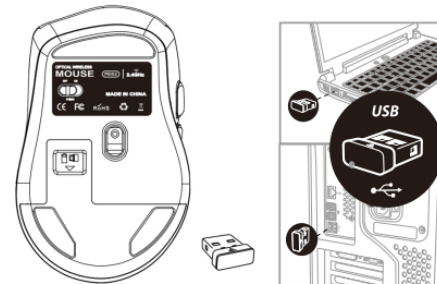
1. Connection method: 2.4G wireless connection technology, plug and play
2. Accurate tracking: Accurate professional IC positioning
3. 10M wireless distance transmission (varies depending on usage environment)
4. DPI adjustable in three gears: 1200-2400-3200
5. Button Mute: The left and right buttons use mute buttons
6. Intelligent Sleep: When there is no operation for 10 minutes, the mouse automatically enters sleep mode, and can be awakened by moving it freely

Product schematic:



Instructions for use

1. Open the battery door and take out the USB receiver
2. Install the battery and turn on the mouse power switch to the ON position
3. Plug the USB receiver into your computer
4. Plug and play, no need to install other driver software



Warning

This device complies with part 15 of the FCC Rules. Operation is subject to the following two conditions: (1) this device may not cause harmful interference, and (2) this device must accept any interference received, including interference that may cause undesired operation.

Any changes or modifications not expressly approved by the party responsible for compliance could void the user's authority to operate the equipment.

NOTE: This equipment has been tested and found to comply with the limits for a Class B digital device, pursuant to Part 15 of the FCC Rules. These limits are designed to provide reasonable protection against harmful interference in a residential installation. This equipment generates, uses and can radiate radio frequency energy and, if not installed and used in accordance with the instructions, may cause harmful interference to radio communications. However, there is no guarantee that interference will not occur in a particular installation.

If this equipment does cause harmful interference to radio or television reception, which can be determined by turning the equipment off and on, the user is encouraged to try to correct the interference by one or more of the following measures:

- Reorient or relocate the receiving antenna.
- Increase the separation between the equipment and receiver.
- Connect the equipment into an outlet on a circuit different from that to which the receiver is connected.
- Consult the dealer or an experienced radio/TV technician for help.

The device has been evaluated to meet general RF exposure requirement. The device can be used in portable exposure condition without restriction.