

Bluetooth Keyboard User Manual

Cover-Fit Bluetooth Keyboard

System Requirements:

- iPad, Samsung Tablet, Smart phone which build in Bluetooth 3.0 or later receiver.
- iOS 7.xx , Android 4.1xx or later.

Features:

1. Support Language: US, Europe, Chinese, Japanese
2. Slim Design
3. Keyboard Technology: Membrane Rubber Switch
4. Active Range: 10 meter
5. Auto Connect Button: Available
6. 3 LED indicators for Battery Low and Bluetooth Connectivity
7. Plug and Play – No software to install.

Specifications:

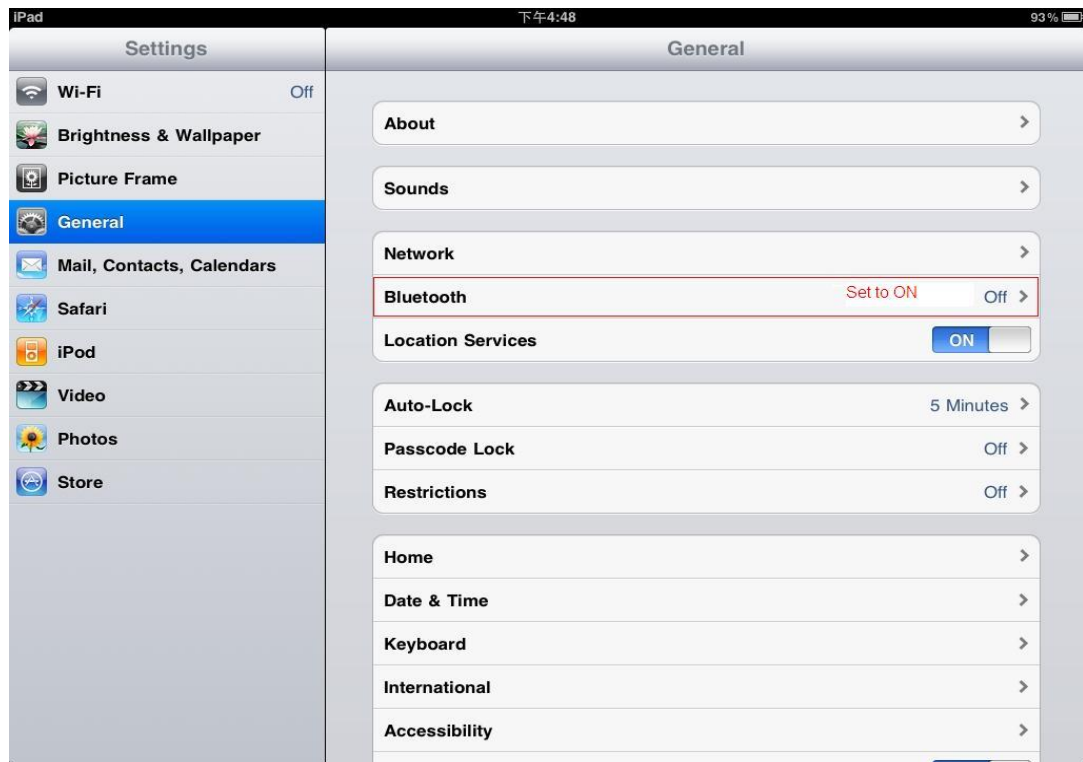
8. Bluetooth V 3.0 specification compliant.
9. Bluetooth HID profile V 1.1 compliant.
10. Frequency Range: 2.4G ~ 2.4835GHz
11. Peak Power consumption: 2 mA Max
12. Sleep mode Power consumption: 30uA
13. Security Encryption: 128 bits
14. Support AFH (Adaptive Frequency Hopping).
15. Compatibility with Android OS
16. Key Force: 55±7g
17. Key Travel: 2.2+/- 0.3mm
18. Switch Life: 10 Million Cycles
19. Keyboard Dimensions: 298(L) x 207(W) x 17(H) mm
20. Weight: 240 ±.20 g
21. Battery: Li-polymer, 3.7V, 500mAh, rechargeable
22. FCC, CE, CEC, BQB, R&TTE, RoHS

Syncing Bluetooth Keyboard with Your iPad

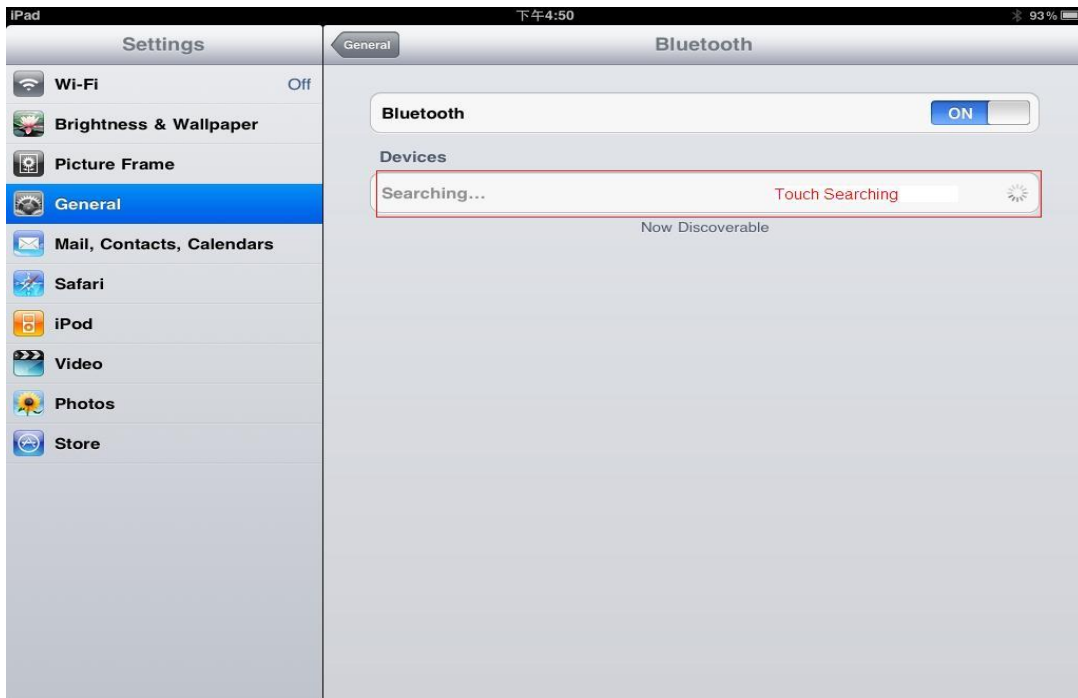
1. Turn On Bluetooth Keyboard Power.
2. Press "CONNECT" button of the Bluetooth keyboard, and blue LED will flash.
3. Tap the "Settings" icon on your iPad to open the Settings menu.

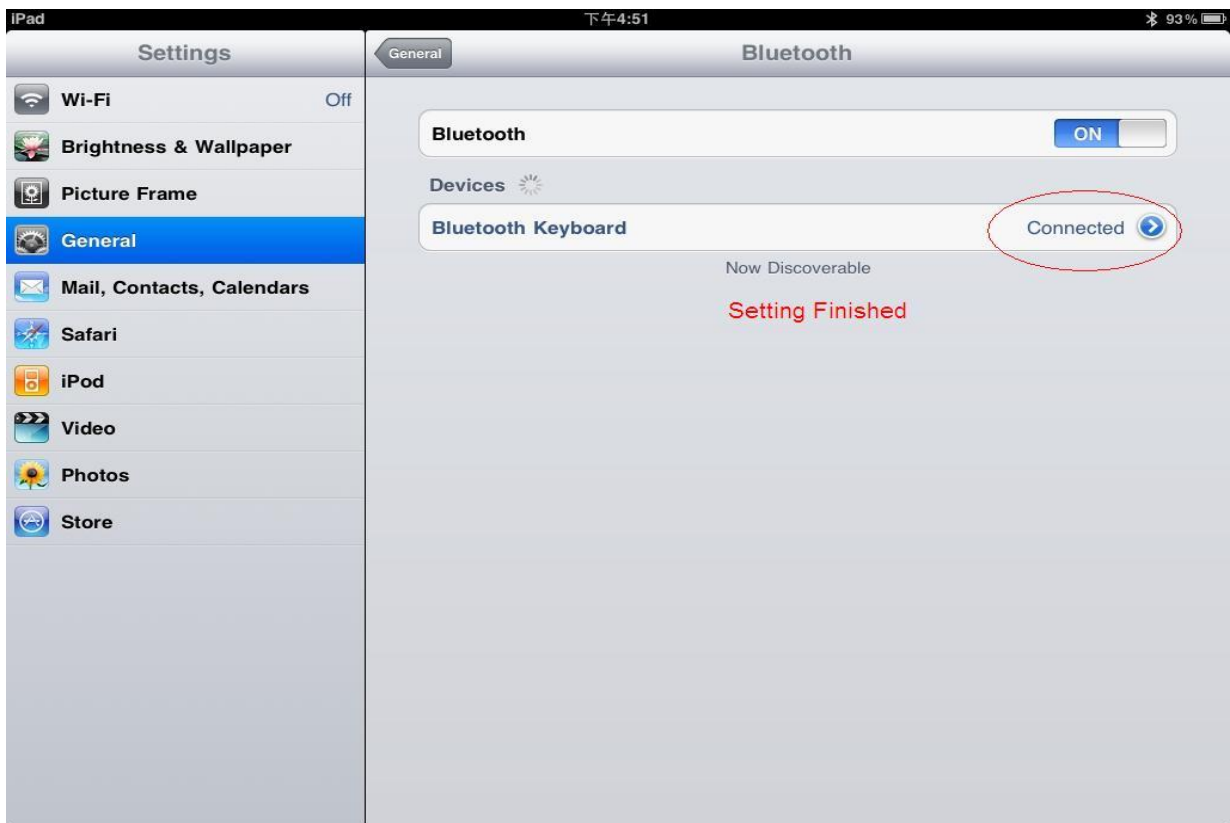
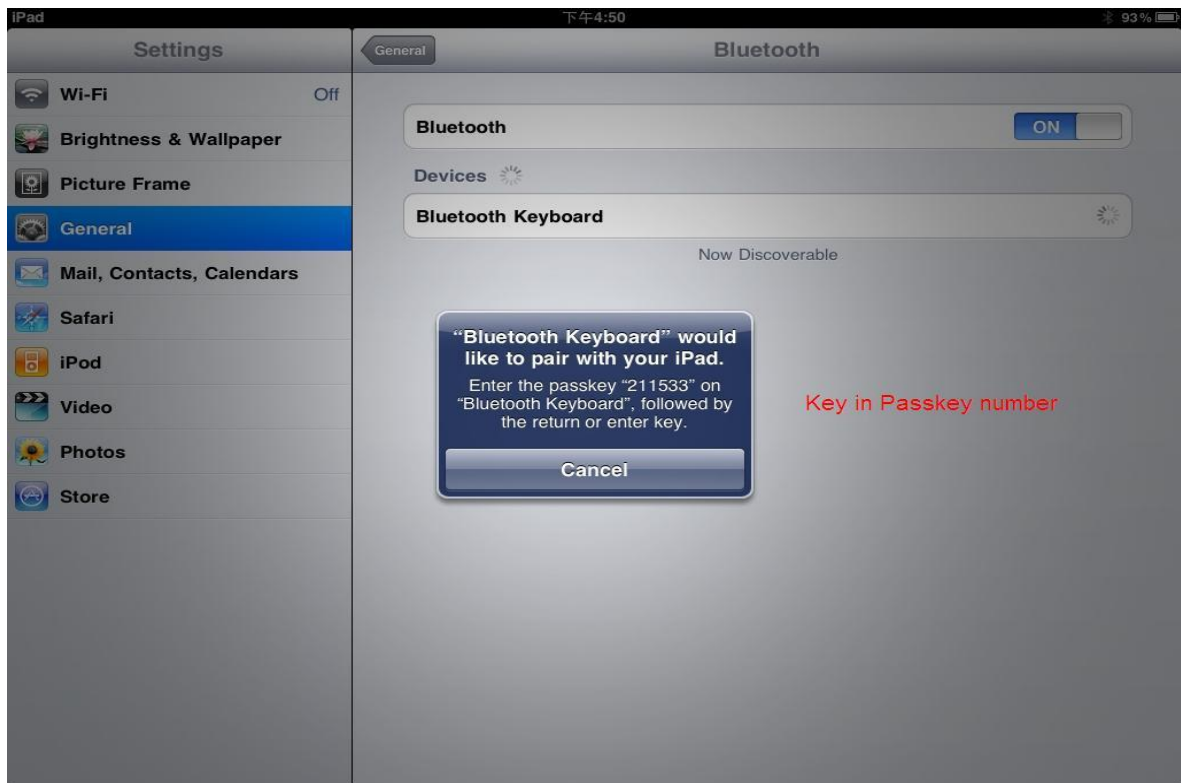


4. Press the "Off" button under the Bluetooth heading to turn on the iPad's Bluetooth radio. The iPad will now search for and list devices it can connect with.



5. Tap the name of your Bluetooth keyboard when it shows up on your iPad. A Passkey number will be shown on the iPad. Type this number on your Bluetooth keyboard and press "Enter." The iPad and keyboard will now be paired.





6. Open an iPad application you can type in, such as Notes or Pages. You should be able to type with the Bluetooth keyboard.

Syncing Bluetooth Keyboard with Your Mac Pro

1) Make Sure That Your Computer Has Bluetooth

If you didn't physically connect a Bluetooth adapter to your computer, make sure that your computer has a Bluetooth module installed. In Mac OS X 10.3 and later, open System Preferences (from the **Apple** menu, choose **System Preferences**) and verify that "Bluetooth" appears in the Hardware section of the window.

2) Turn On Bluetooth

In System Preferences, click Bluetooth and then click the Settings tab. If you don't see "Bluetooth Power: On," click the "Turn Bluetooth On" button. Make sure that you also enable Bluetooth on your device too, please refer to your device's documentation for instructions.

3) Set Up a Bluetooth Keyboard

To set up an Wireless Bluetooth Keyboard, open System Preferences, click Keyboard & Mouse, click the Bluetooth tab, and then click "Set Up New Device" to open the Bluetooth Setup Assistant. Follow the onscreen instructions to set up your keyboard.

Note:

LED indicator status:

- Blue LED: Bluetooth keyboard is searching iPad and to do pairing when the LED is flashing. Once the LED stop flashing, the pairing will be success.
- Red LED: Alert the batteries should be change to new one when the LED is flashing.
- Charging : You have to use Micro USB Cable and connect to USB port of Bluetooth Keyboard computer. And other side of cable connect USB port of computer or AC power adaptor.

Federal Communication Commission Interference Statement

This equipment has been tested and found to comply with the limits for a Class B digital device, pursuant to Part 15 of the FCC Rules. These limits are designed to provide reasonable protection against harmful interference in a residential installation. This equipment generates, uses and can radiate radio frequency energy and, if not installed and used in accordance with the instructions, may cause harmful interference to radio communications. However, there is no guarantee that interference will not occur in a particular installation. If this equipment does cause harmful interference to radio or television reception, which can be determined by turning the equipment off and on, the user is encouraged to try to correct the interference by one of the following measures:

- Reorient or relocate the receiving antenna.
- Increase the separation between the equipment and receiver.
- Connect the equipment into an outlet on a circuit different from that to which the receiver is connected.
- Consult the dealer or an experienced radio/TV technician for help.

FCC Caution: Any changes or modifications not expressly approved by the party responsible for compliance could void the user's authority to operate this equipment.

This device complies with Part 15 of the FCC Rules. Operation is subject to the following two conditions: (1) This device may not cause harmful interference, and (2) this device must accept any interference received, including interference that may cause undesired operation.

IMPORTANT NOTE:

Radiation Exposure Statement:

The product comply with the US portable RF exposure limit set forth for an uncontrolled environment and are safe for intended operation as described in this manual. The further RF exposure reduction can be achieved if the product can be kept as far as possible from the user body or set the device to lower output power if such function is available.

This transmitter must not be co-located or operating in conjunction with any other antenna or transmitter.