

尺寸: 140\*100mm  
材质: 封面157g铜版纸  
内页128g铜版纸  
装订方式: 骑马钉

# iDea Pico



## USER GUIDE

## **Welcome**

*Congratulations on choosing to buy a iDea Pico product.*

*All products brought to you by iDea USA are manufactured to the highest standards of performance and safety and, as part of our philosophy of customer service and satisfaction, are backed by our comprehensive 1 Year Warranty. We hope you will enjoy using your purchase for many years to come.*

*Model: P100A*

*FCC ID: 2AAGR15P-01*

*Designed in the USA and Made in P.R.C*

## **Contents**

### ***Important Safety Instructions***

<i>Warnings.....</i>	<i>3</i>
<i>Regulatory Guidelines.....</i>	<i>4</i>

### ***Introduction***

<i>Key Benefits.....</i>	<i>6</i>
--------------------------	----------

### ***Product Overview***

<i>Product Overview.....</i>	<i>7</i>
<i>Packing List.....</i>	<i>8</i>

### ***Getting Started***

<i>Turn On/Off the Pico.....</i>	<i>9</i>
<i>Focus Adjustment.....</i>	<i>9</i>
<i>Charging.....</i>	<i>9</i>

### ***Setting***

<i>Home Screen.....</i>	<i>10</i>
<i>iDea-pico+WiFi.....</i>	<i>10</i>
<i>ios.....</i>	<i>11</i>
<i>Mac.....</i>	<i>12</i>
<i>Windows Miracast.....</i>	<i>13</i>
<i>Android Miracast.....</i>	<i>14</i>
<i>DLNA.....</i>	<i>15</i>
<i>Micro SD.....</i>	<i>16</i>
<i>Setting.....</i>	<i>17</i>

<i>Technical Specifications.....</i>	<i>18</i>
--------------------------------------	-----------

## ***Important Safety Instructions***

---

*Please take the time to carefully read and follow these important safety Instructions. They will help you set up and operate your system properly and enjoy its advanced features. Save this guide for future reference.*

### **Warnings:**



• **Carrying and Handling iDea Products.** iDea Products contain sensitive components. Do not drop, disassemble, open, crush, bend, deform, puncture, shred, microwave, incinerate, paint, or insert foreign objects into iDea Products.

• **Avoiding Water and Wet Locations.** Do not use iDea products in rain or other wet locations. Take care not to spill any food or liquid on iDea Products. In case iDea products get wet, unplug all cables, turn off iDea product before cleaning, and allow it to dry thoroughly before turning it on again. Do not attempt to dry iDea products with an external heat source, such as a microwave oven or hair dryer. An iDea product that has been damaged as a result of exposure to liquids is not serviceable and not covered under warranty.

• **Repairing or Modifying iDea Products.** Never attempt to repair or modify iDea Products yourself. Disassembling iDea Products may cause damage that is not covered under the warranty. iDea products do not contain any user-serviceable parts. Service should only be provided by iDeaUSA. If iDea products have been in contact with liquids, punctured, or subjected to a severe fall, do not use it until it is serviced by iDeaUSA. For service information, please visit: [support.iDeaUSA.com](http://support.iDeaUSA.com).

• **Battery Replacement.** The rechargeable battery in iDea products should be replaced only by iDeaUSA. For more information about battery replacement service, please visit: [support.iDeaUSA.com](http://support.iDeaUSA.com).

• **Using Connectors and Ports.** Never force a connector into a port. Check for obstructions on the port. If the connector and port don't join with reasonable ease, they probably don't match. Make sure that the connector matches the port and that you have positioned the connector correctly in relation to the port.

• **Keeping iDea Products Within Acceptable Temperatures.** Avoid dramatic changes in temperature or humidity when using iDea products, as condensation may form on or within iDea Products. Don't leave iDea products in your car, because temperatures in parked cars can exceed acceptable temperatures. When you're using iDea products or charging the battery, it is normal for iDea products to get warm. The exterior of iDea Products functions as a cooling surface that transfers heat from inside the unit to the cooler air outside.

• *Keeping the Outside of iDea Products Clean. Handle your iDea products with care to maintain its appearance. To clean iDea products, unplug all cables and turn off iDea products. Then use a soft, slightly damp, lint-free cloth. Avoid getting moisture in openings. Don't use window cleaners, household cleaners, aerosol sprays, solvents, alcohol, ammonia, or abrasives to clean iDea products.*



*Contains small parts which may be a choking hazard. Not suitable for children under age 3.*

*Supervise young children to ensure they do not play with the product. Children may not comprehend the presence of potential risks. Batteries and small parts represent potential choking hazards. Keep batteries out of reach of children. If a battery is swallowed, seek medical help immediately. Keep packaging materials away from children as there is danger of suffocation.*



*This symbol means the product must not be discarded as household waste, and should be delivered to an appropriate collection facility for recycling. Proper disposal and recycling helps protect natural resources, human health and the environment. For more information on disposal and recycling of this product, contact your local municipality, disposal service, or the shop where you bought this product.*

## **Regulatory Guidelines**



*This device complies with part 15 of the FCC Rules. Operation is subject to the following two conditions:*

*(1) This device may not cause harmful interference.*

*(2) this device must accept any interference received, including interference that may cause undesired operation.*

**Warning:** *Changes or modifications not expressly approved by the party responsible for compliance could void the user's authority to operate the equipment.*

*This device meets the FCC Radio Frequency Emission Guidelines and is modifications with the FCC. This device has been tested and found to comply with the limits for a Class B digital device, pursuant to Part 15 of the Federal Communication Commission (FCC) Rules.*

*These limits are designed to provide reasonable protection against harmful interference in residential installation. This device generates, uses and can radiate radio frequency energy and if not installed and used in accordance with the instructions, may cause harmful interference to radio communications. However, there is no guarantee that interference will not occur in a particular installation. If this device does cause harmful interference to radio or television reception which can be determined by turning the device off and on, the user is encouraged to try to connect the interference by one or more of the following*

*measures:*

*Reorient or relocate the receiving antenna.*

*Increase the separation between the device and receiver.*

*Connect the equipment to an outlet on a circuit different from the one the receiver is connected to.*

*Consult an experienced radio/TV technician for help.*

*Software License Agreement*

*Use of iDea products constitutes acceptance of the iDeaUSA and third-party software license terms found at: [www.iDeaUSA.com](http://www.iDeaUSA.com).*

## ***Introduction***

---

### ***Key Benefits***

- ***Home Entertainment***

*Enjoy a home theater at every where with the iDea Pico, The staggering immensity of the display screen and unrivaled picture clarity create a vivid environment.*

- ***Portable, Projector, Travelling-friendly***

*Under 1 pound cute appearance to place in the palm. Optical hidden focusing for good operation and simple appearance. Excellent choice for constantly traveling.*

- ***Outdoor Movie***

*Enjoy a Movie whenever you are outside for camping, traveling. The iDea Pico is as versatile as your media queue for any movie under the comfort of your covers.*

- ***Remote Office***

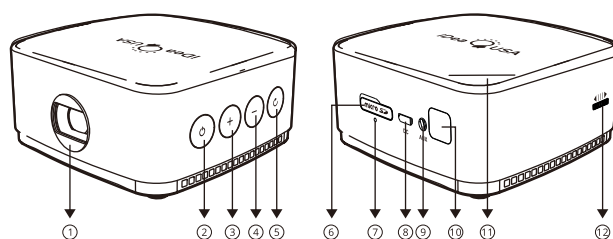
*The most cost-efficient high resolution LED Projector with wireless connect function. Excellent display solution for showing PowerPoint, graphs, spreadsheets and general business data.*

- ***Wireless Display***

*DLNA Internet Sharing, Airplay Mirroring, Wifi online Playing*

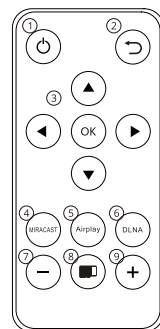
*Enjoy Sharing Everywhere. Keep your media shown wherever, whenever you want!*

## Product Overview



- |                                |                           |                                |
|--------------------------------|---------------------------|--------------------------------|
| ① Lens                         | ② Power On / Off          | ③ Up/Vol+; left; Fast Backward |
| ④ Down/Vol-;Right;Fast Forward | ⑤ Mode Switch/ Return     | ⑥ Micro SD                     |
| ⑦ Speaker                      | ⑧ Micro USB (DC Charging) | ⑨ AUX                          |
| ⑩ Infrared receiver            | ⑪ Battery Level indicator | ⑫ Focus                        |

## Infrared Remote Control Panel



- |                        |
|------------------------|
| ① Power Button         |
| ② Return               |
| ③ Direction and OK key |
| ④ MIRACAST             |
| ⑤ Airplay              |
| ⑥ DLNA                 |
| ⑦ Volume down          |
| ⑧ TF                   |
| ⑨ Volume up            |



### ***Packing List***

---



*iDea Pico*



*Charger*



*Car Charger*



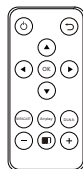
*USB Cable*



*Bracket*



*User Guide*



*Infrared Remote control*



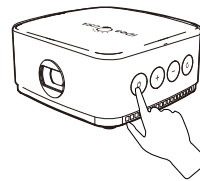
*Portable Bag*

*If an included item is missing, or if any part  
of your Pico fails to operate properly,  
Please contact us.*

## **Getting Started**

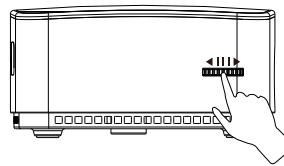
### **Turn On/Off the Pico**

*Press the Power Button 3 Seconds to turn on / off projector.*

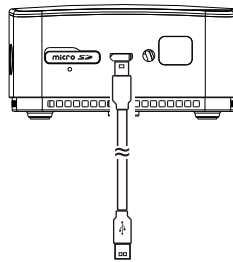


### **Focus Adjustment**

*Slide the focus to adjust the focal length to get the clear image output.*



### **Charging**

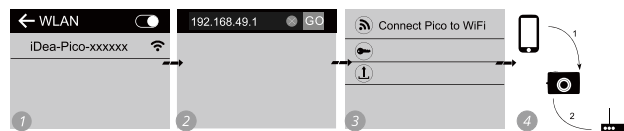


## Setting

### *Home screen*



### *iDea-pico+WiFi*

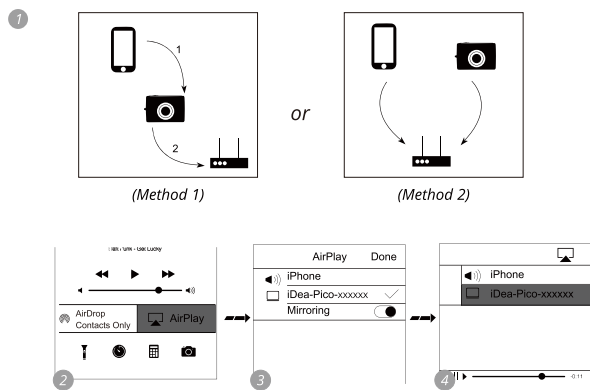


1. Enable your phone or computer's Wi-Fi.
2. Search for "iDea-Pico-xxxxxx" Wi-Fi hotspot and connect to it.
3. Open Internet browser on your phone or computer.
4. Enter the IP address <http://192.168.49.1>
5. Press "Connect Pico to WiFi"
6. Search for your home router's WiFi and connect to it.
4. Now the iDea-pico projector has been connected to your home WiFi. Your phone or computer is still connected to the iDea-pico projector's WiFi but it shall be able to access the Internet now as long as your home WiFi has access to the Internet.

## ios

Support iOS 5.0 or above

You can cast your iOS device's local images/videos or third party video data to the Projector.



### 1 (Method 1)

The iDea-pico projector has been connected to your home WIFI, and your phone is connected to the iDea-pico projector's WIFI.

### (Method 2)

Both your phone and the iDea-pico projector are connected to your home WIFI.

### 2 Swipe up on control panel, Press

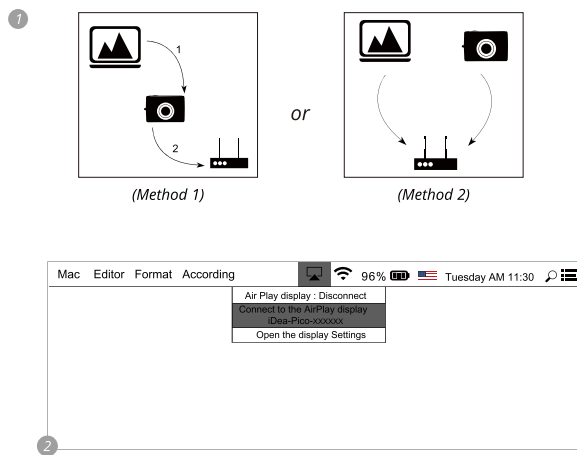
### 3 Select "iDea-Pico-XXXXXX", and enable Mirroring if you prefer (please refer to the iOS device manual for the details of AirPlay and Air Mirroring), then press Done.

### 4 Or in the third party video software that supports AirPlay press

## Mac

Support more than 2012 years of models or OS X Mountain

You can cast your MacOS device's local images/videos or third party video data to the Projector



1 (Method 1)

The iDea-pico projector has been connected to your home WIFI, and your mac is connected to the iDea-pico projector's WIFI.

(Method 2)

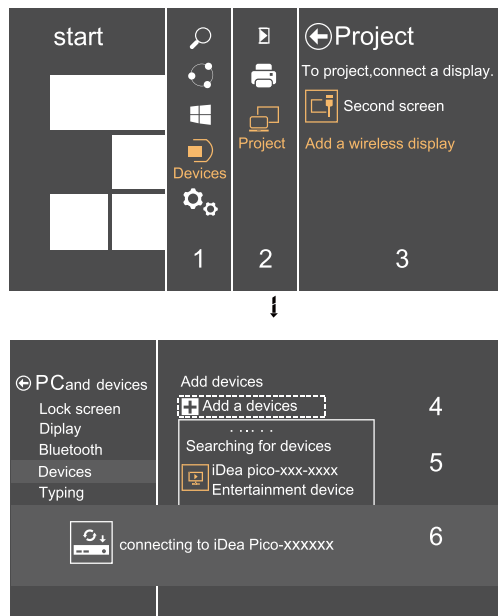
Both your mac and the iDea-pico projector are connected to your home WIFI.

2 Select "iDea-Pico-XXXXXX", Press "Done".

## Windows Miracast

Support for version 8.1 and above

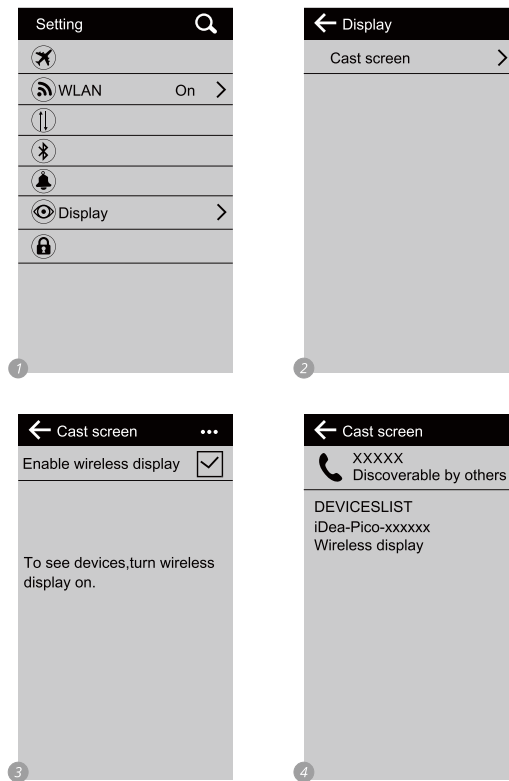
With a Miracast enabled Windows device, you can mirror your content to the Projector.



## Android Miracast

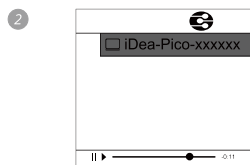
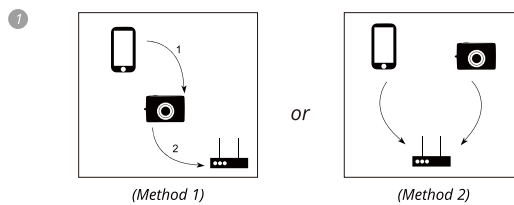
Support for version 4.2 and above (Android 4.2 operating reference)

With a Miracast enabled Android device, you can mirror your content to the projector.



## DLNA

With DLNA you can cast your smart device's local images/video or the third party video data to the Projector.



- 1 (Method 1)  
The iDea-pico projector has been connected to your home WIFI, and your phone is connected to the iDea-pico projector's WIFI.

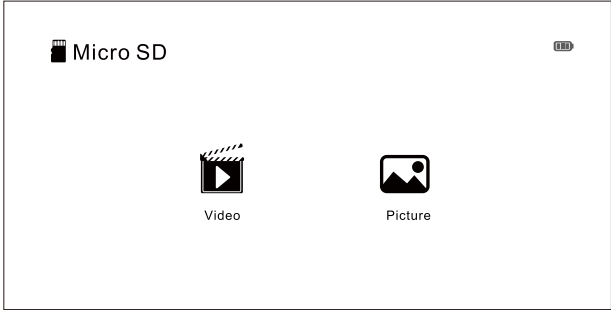
(Method 2)  
Both your phone and the iDea-pico projector are connected to your home WIFI.

- 2 In the third party apps that support DLNA press  and select iDea-Pico-xxxxxx.



**Micro SD**

Insert TF card, Pico can identify the media information, as show above:







TF card supported formats

Audio	*.mp3	*.wma	*.wav		
Video	*.avi	*.mp4	*.ts	*.rmvb	*.mpeg
	*.wmv	*.mov	*.flv	*.rm	*.3gp
	*.mpg	*.vob	*.mkv		
Picture	*.jpg	*.png	*.jpeg		

## Setting

### Setting

-  WiFi Settings
-  Language
-  Online upgrade
-  About the Device

### **Technical Specifications**

Main Function	Dimensions	2.95*2.95*1.47 inch
	Focus	Handing
	Operating Temperature	0°C~ +40°C
	Tcase	≤40°C
	Projector	Ongine
	Led Driver	DPP2607
	WIFI	RTL8192DU 802.11 a/b/g/n 2.4G to 5GHz 2T2R
	Battery	5000mAh
	Fan	5V/0.1A
Optical	Projector Technology	DLP
	Lamp	RGB LED
	Brightness	80 ANSI lumens
	Resolution	1280*720 (WVGA )
	Displayable Colors	100% NTSC color gamut
	Image Size (Diagonal)	1m---37.8
	Contrast Ratio	1000:1
	Throw Ratio	1.19:1
	Aspect Ratio	16:9
	LED Life	≥25000H
Interface	Micro USB	Power DC (5.2V/2A)
	IR Remote	Support
	TF Card	Support
	Upgrade	Support

*Learn More About iDea Pico*  
*[www.iDeaUSA.com](http://www.iDeaUSA.com)*

Shenzhen Wanchuangbo Industry Development Co., Ltd.  
Add: Building 4, Dezhong Industry Park, No.7 Lipu Street,  
Bantian, Longgang District Shenzhen, China  
Tel: +86-755-83865853  
Website: [www.wanchuangbo.com](http://www.wanchuangbo.com)



BETTER DESIGN | BETTER EXPERIENCE | BETTER VALUE