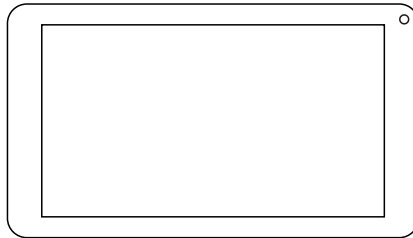
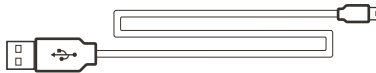


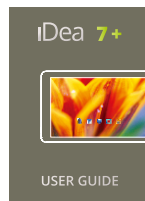
INCLUDED IN THE BOX



iDea CT740 TABLET / PROTECTIVE CASE



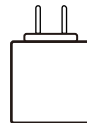
USB CABLE



USER MANUAL

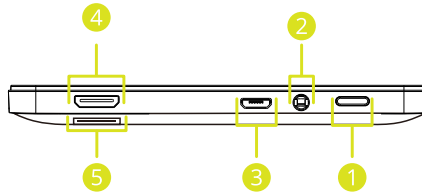


WARRANTY CARD



*TABLET CHARGER
(AC ADAPTER)*

PORT FUNCTIONS



1.POWER-Press shortly to enter sleeping/walking up mode, press long to switch ON/OFF.

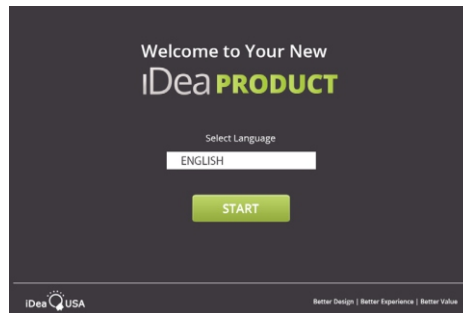
2.EARPHONE JACK-Connect your headphones or headset , to listen to your music or have a video chat.

3.USB-Gives you the ability to attach USB accessories.

4.HDMI-Send audio/video of your tablet to an HD enabled device (television, projector) with an HDMI cable.

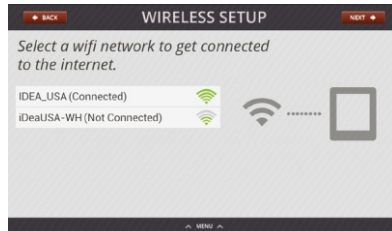
5.TF CARD PORT-Insert TF Card and expand your tablets usable space.

Idea WELCOME APP



When Turning on your tablet for the first time, you should be greeted by the iDea Welcome App, if not, please launch the iDea Welcome App on your homescreen.

SETTING UP WIFI NETWORK

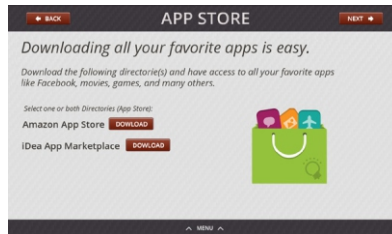


Select the wireless connection that you would like to connect to.

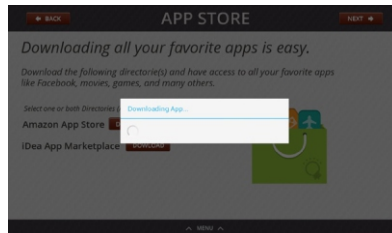


After selecting your desired wireless connection enter the password. (if required) Once connected, you are ready to enjoy the internet.

DOWNLOADING APP STORE



Select the app store you wish to download, by pressing the download button next to it.



Once the Download button is pressed, the app store should automatically download to your device, and you are ready to download all your favorite apps.

BASIC DEVICE FUNCTIONS

FUNCTION	OPERATION
Powering on the Device	<i>When the device is off, press and hold Power button for 3 seconds.</i>
Powering off the Device	<i>When the device is on, press and hold Power button for 3 seconds, then tap "Power Off"</i>
Waking up the Device	<i>When device is in sleep mode, press Power button once.</i>
Moving Icons	<i>Press and hold desired icon until movable, then move to desired location.</i>
Removing icon from homescreen	<i>Press and hold desired icon until movable, then move to the "X" at the top of the screen (This will not delete application, only remove it from homescreen)</i>

FCC STATEMENT

1. This device complies with Part 15 of the FCC rules. Operation is subject to the following two conditions:

(1) This device may not cause harmful interference.

(2) This device must accept any interference received, including interference that may cause undesired operation.

2. Changes or modifications not expressly approved by the party responsible for compliance could void the user's authority to operate the equipment.

NOTE:

This equipment has been tested and found to comply with the limits for a Class B digital device, pursuant to Part 15 of the FCC rules.

These limits are designed to provide reasonable protection against harmful interference in a residential installation.

This equipment generates uses and can radiate radio frequency energy and, if not installed and used in accordance with the instructions, may cause harmful interference to radio communications. However, there is no guarantee that interference will not occur in a particular installation. If this equipment does cause harmful interference to radio or television reception, which can be determined by turning the equipment off and on, the user is encouraged to try to correct the interference by one or more of the following measures:

Reorient or relocate the receiving antenna.

Increase the separation between the equipment and receiver.

Connect the equipment into an outlet on a circuit different from that to which the receiver is connected.

Consult the dealer or an experienced radio/TV technician for help.

Learn More About iDea Tablets at
www.iDeaUSA.com



Better Design | Better Experience | Better Value