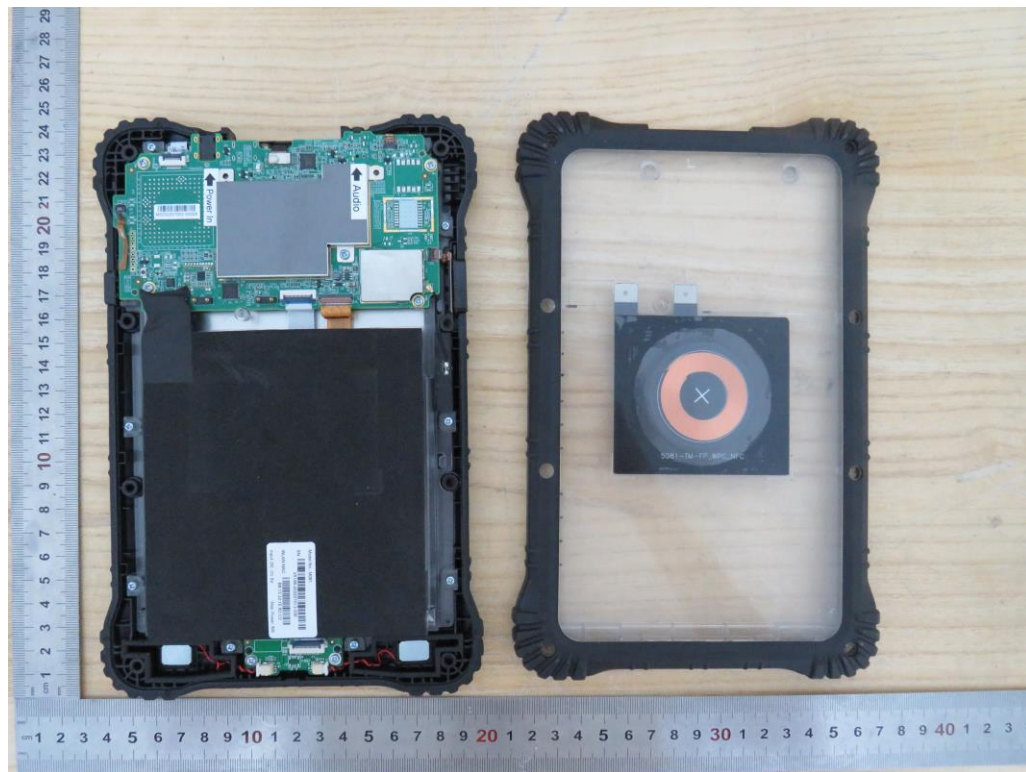


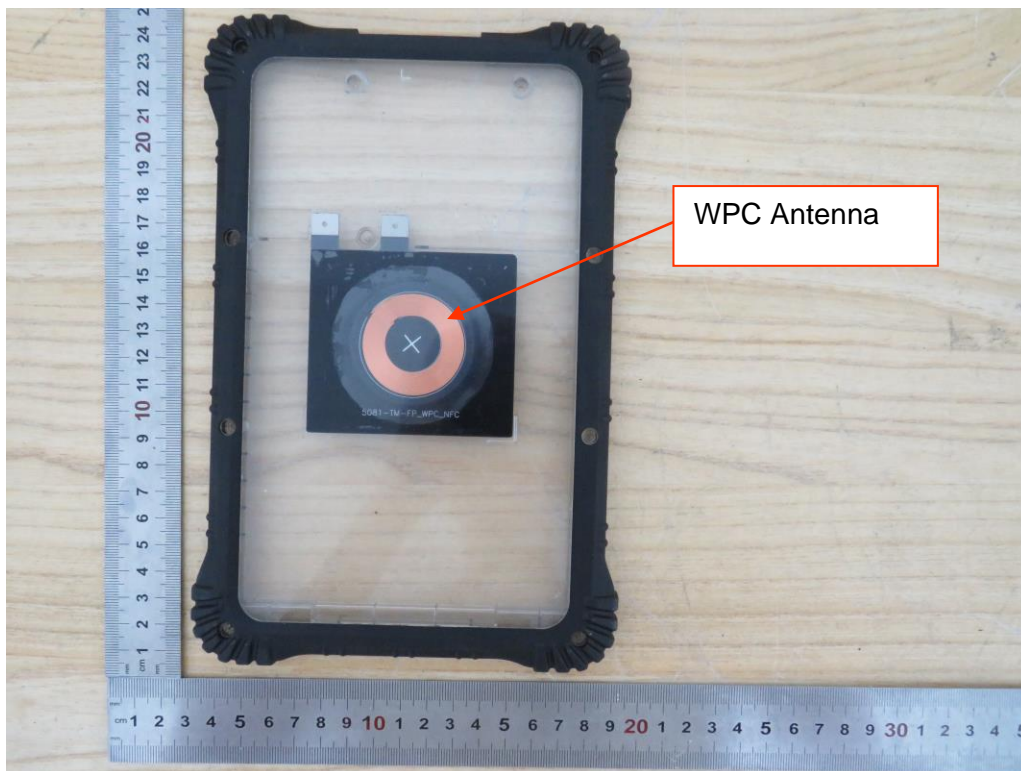


Internal Photographs

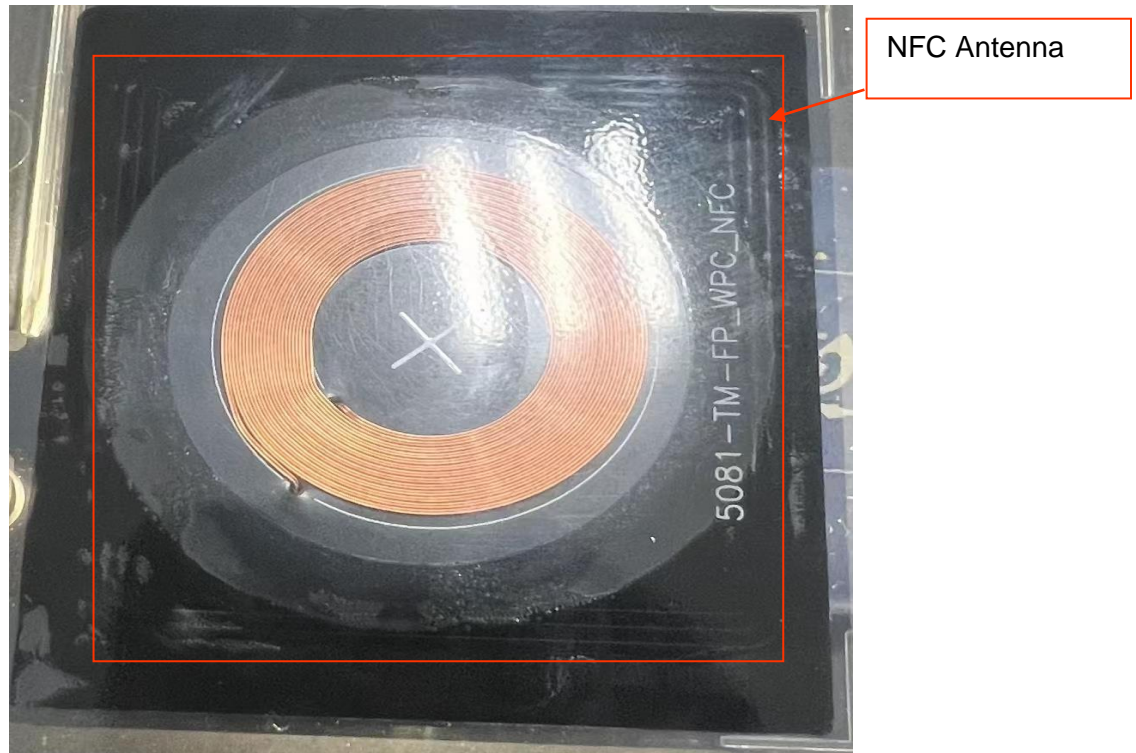
Internal View of EUT-1



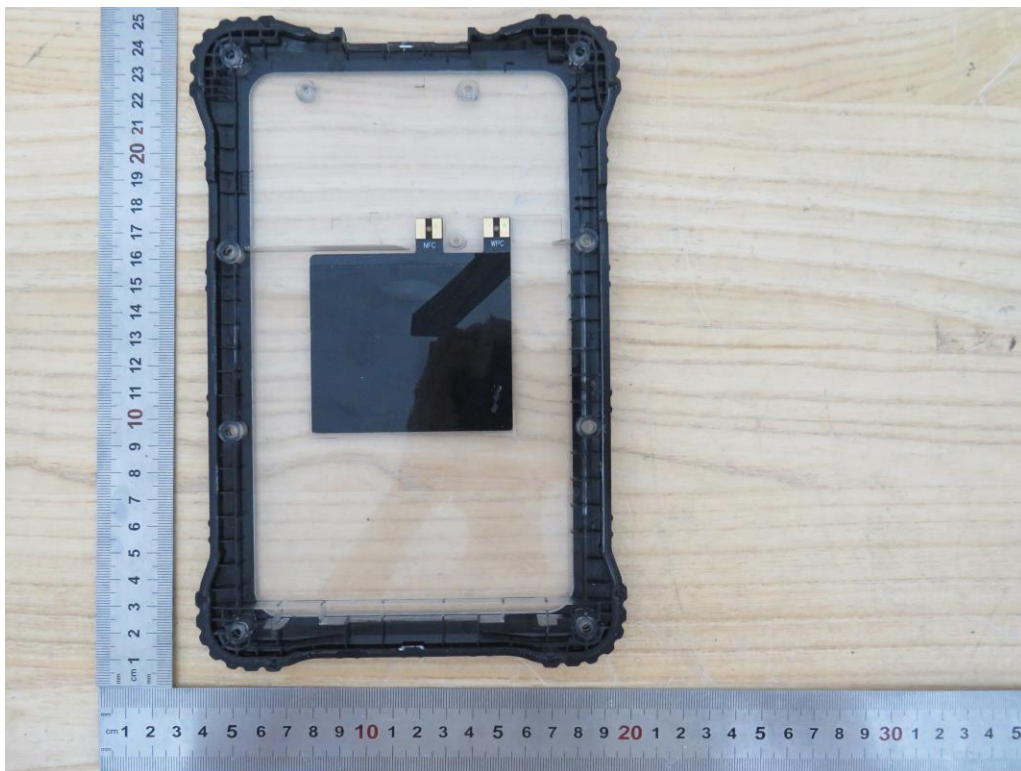
Internal View of EUT-2



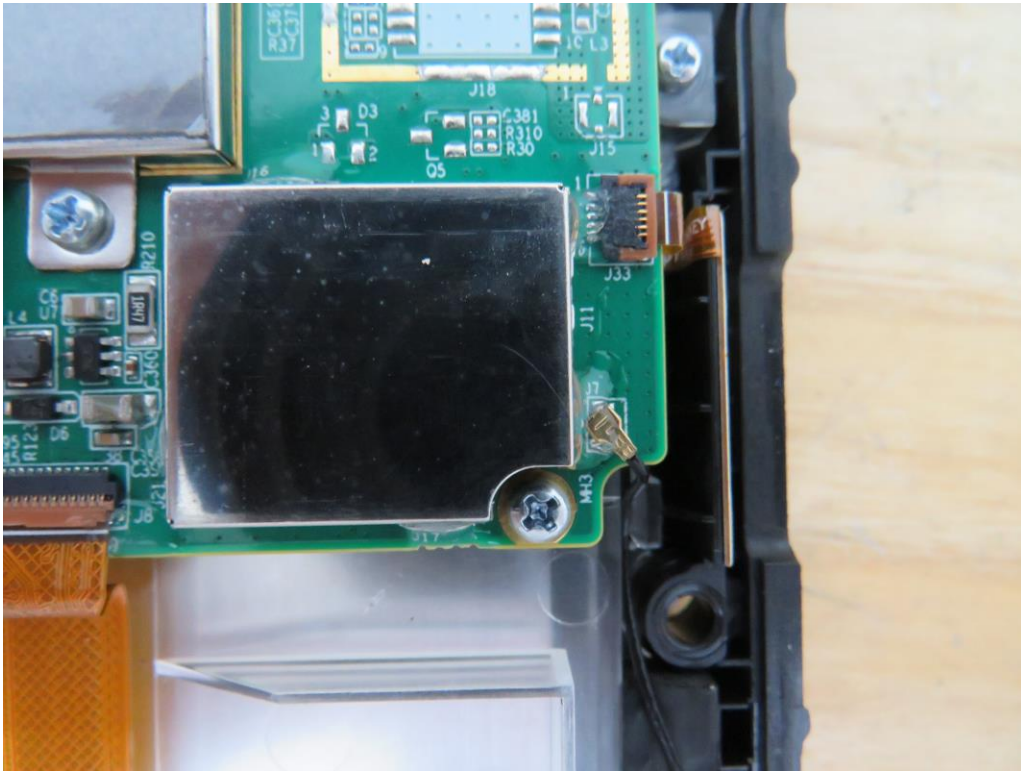
Internal View of EUT-3



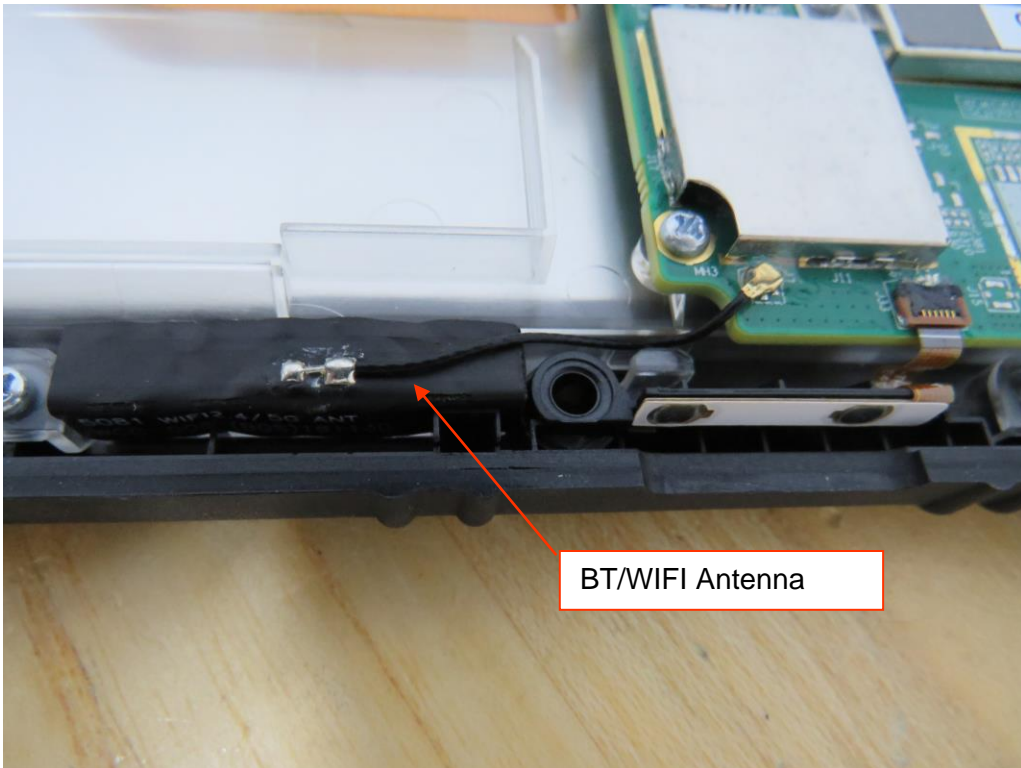
Internal View of EUT-4



Internal View of EUT-5



Internal View of EUT-6



BT/WIFI Antenna

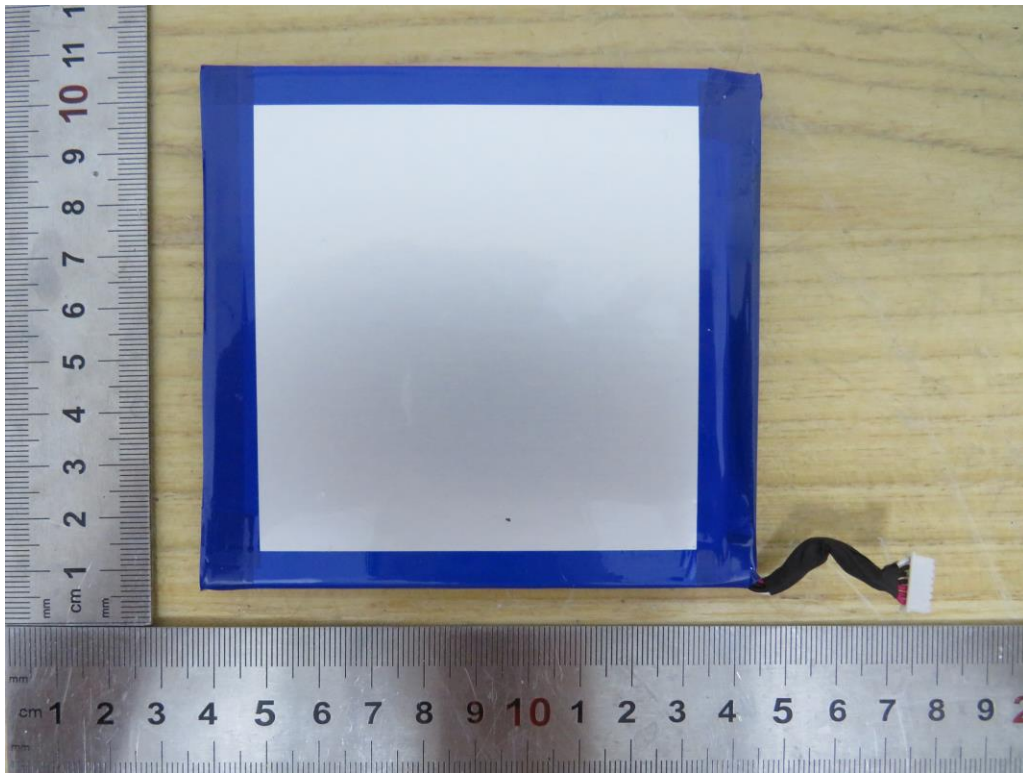
Internal View of EUT-7



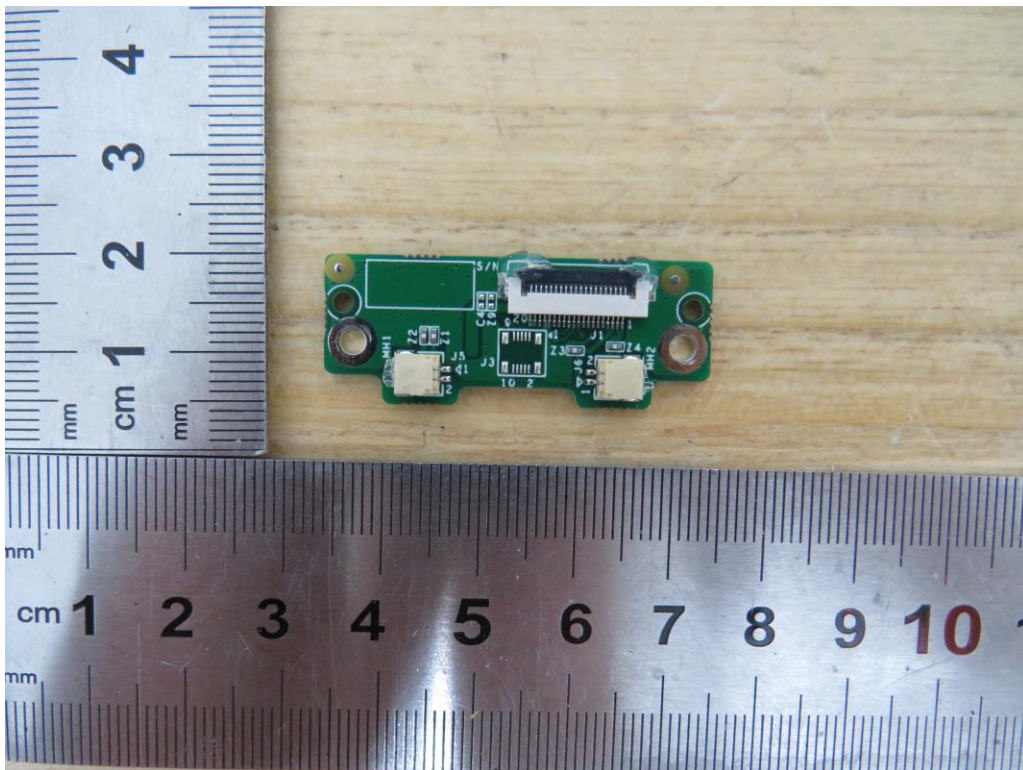
Internal View of EUT-8



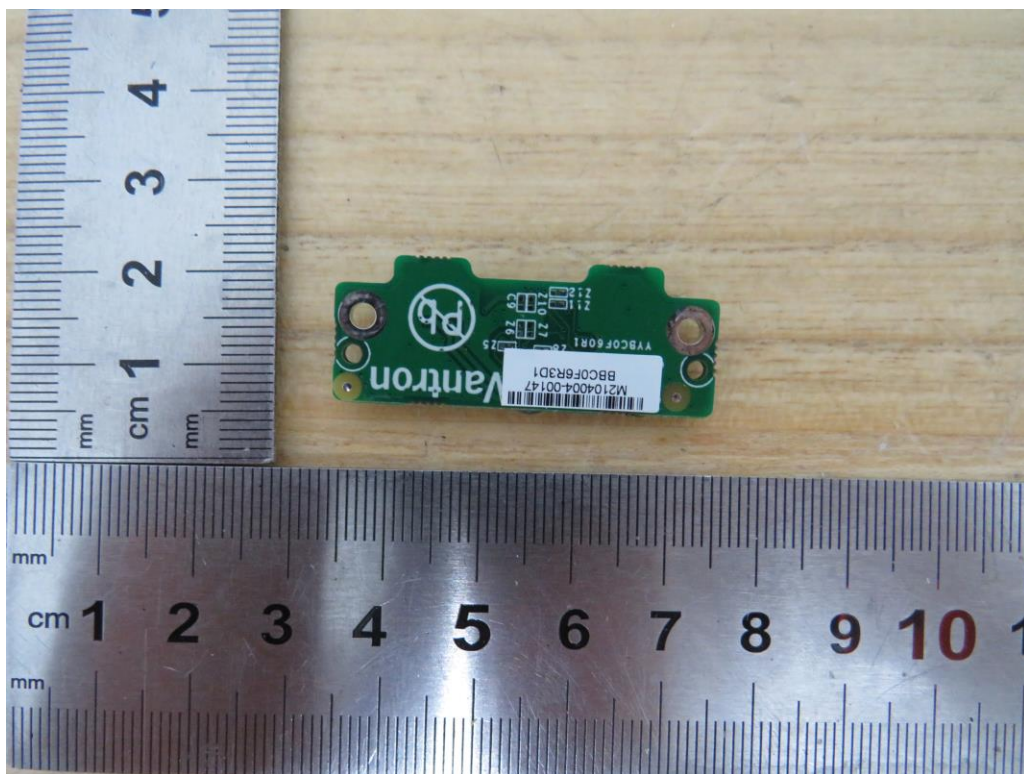
Internal View of EUT-9



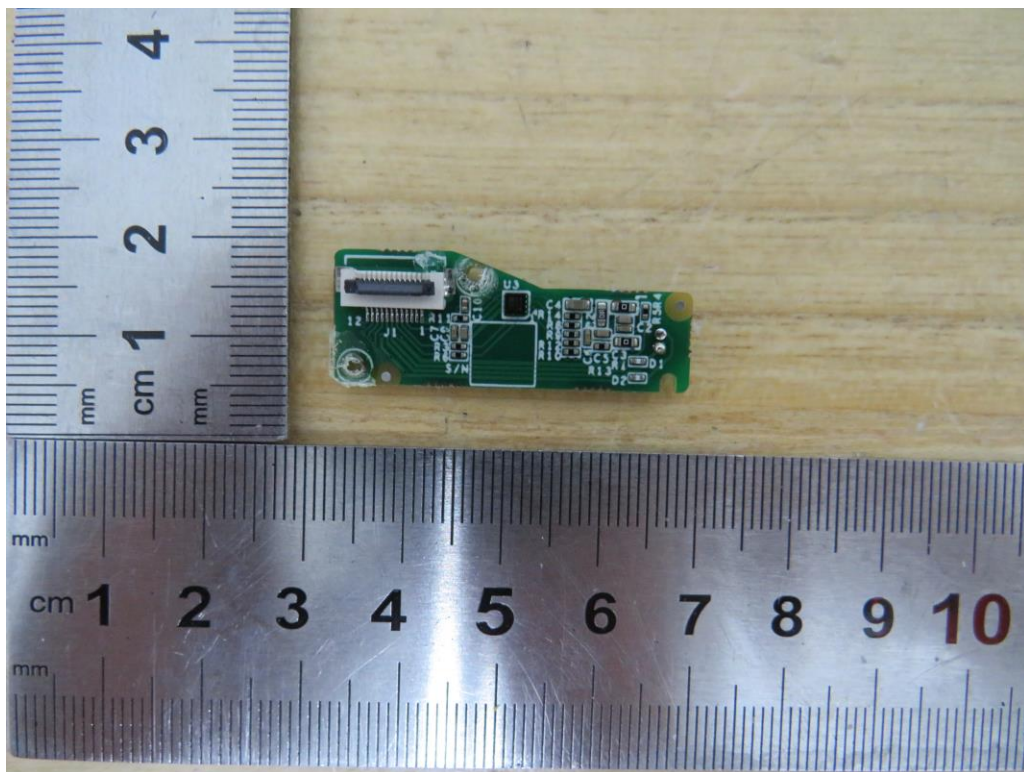
Internal View of EUT-10



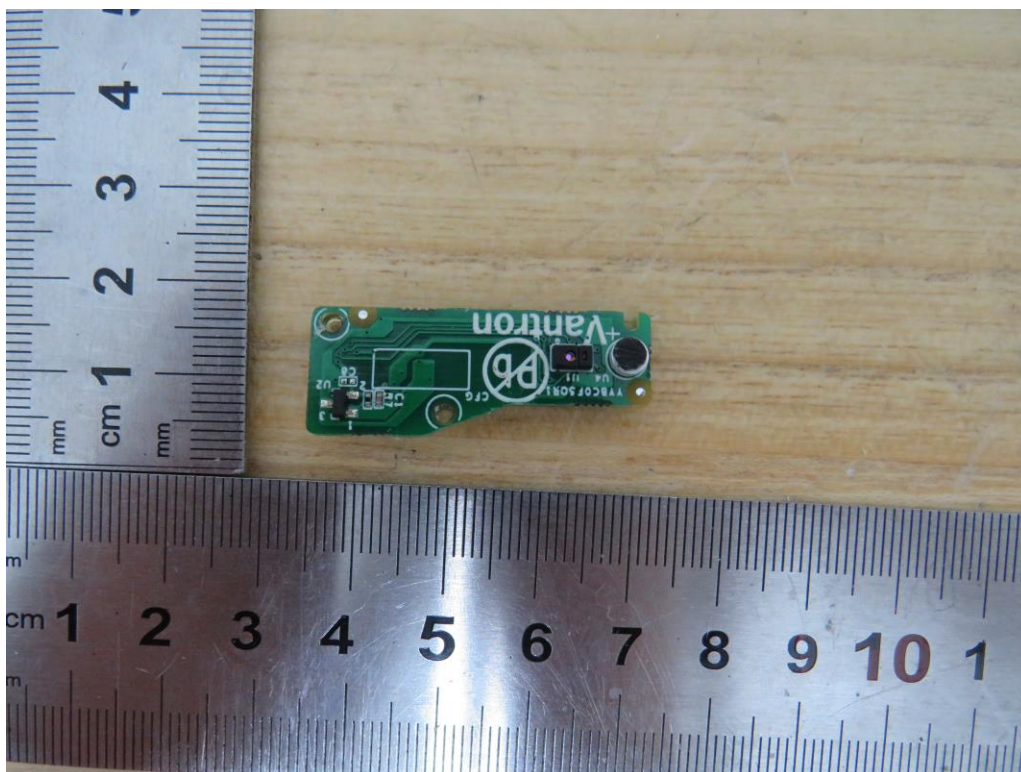
Internal View of EUT-11



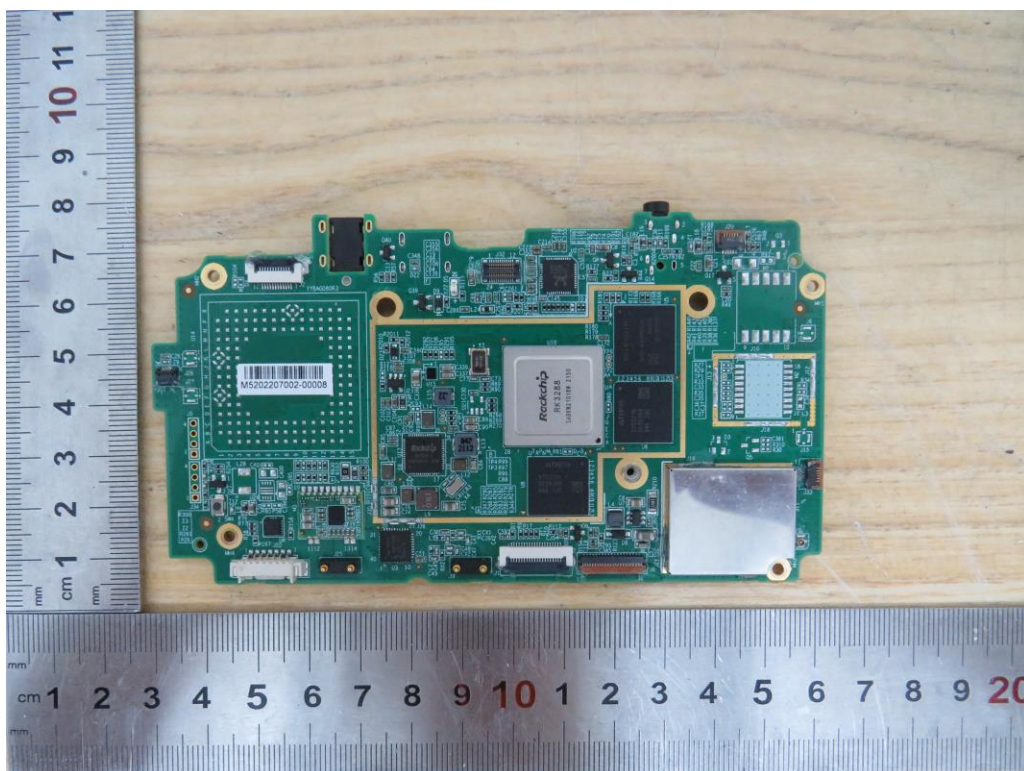
Internal View of EUT-12



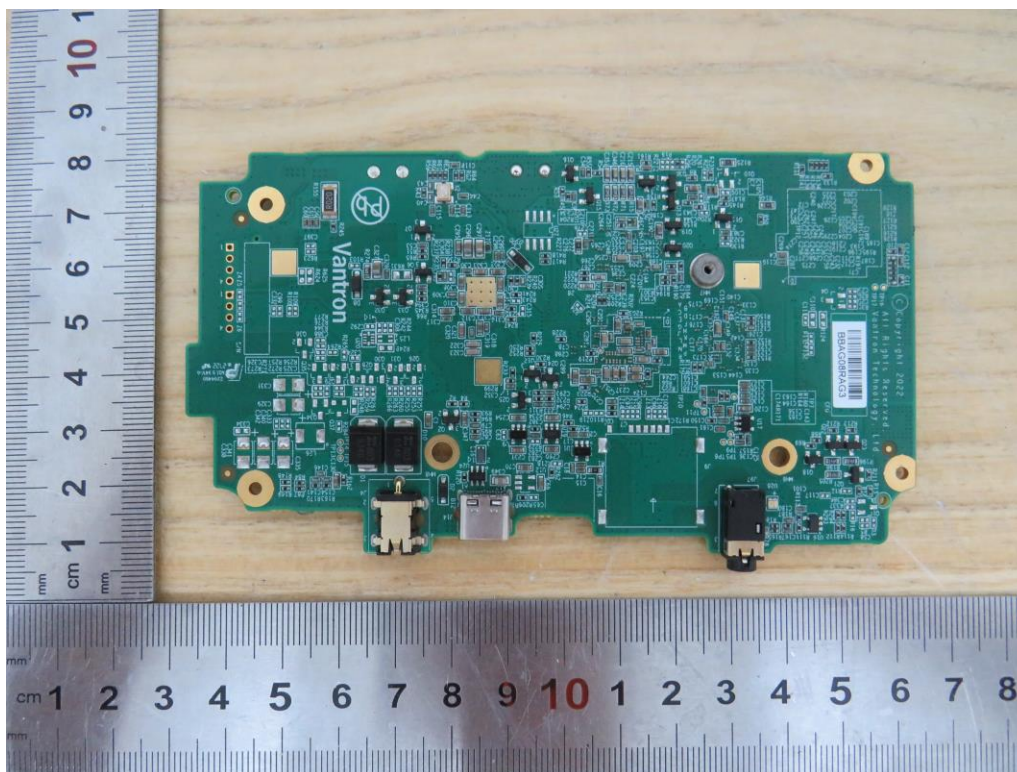
Internal View of EUT-13



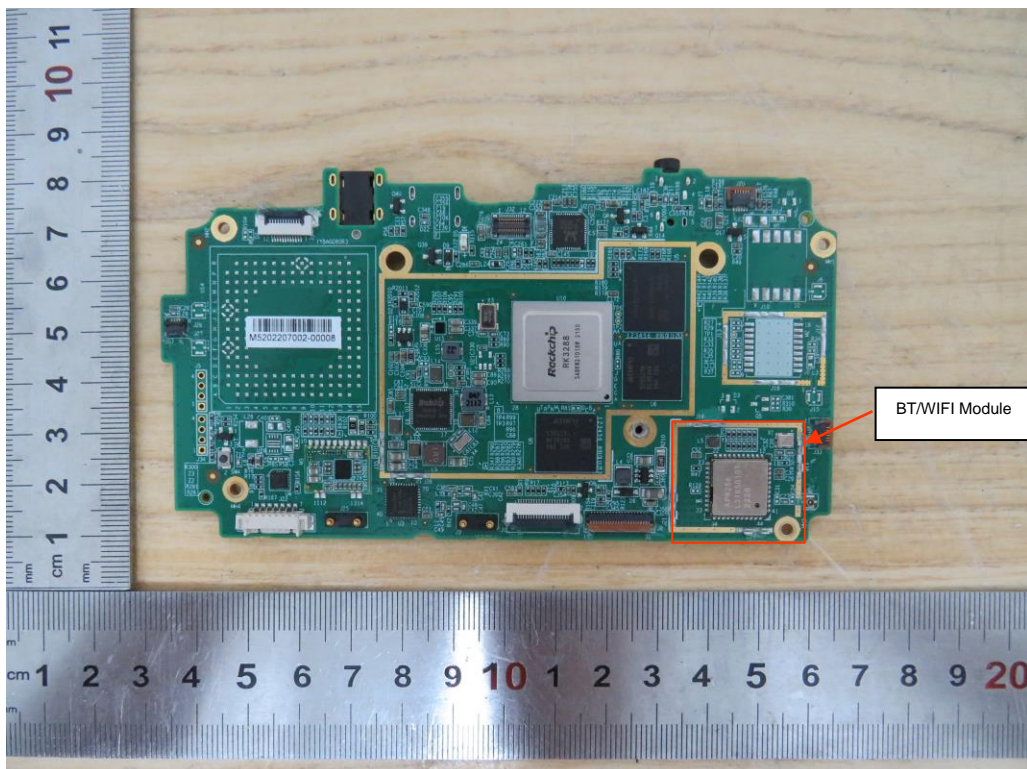
Internal View of EUT-14



Internal View of EUT-15

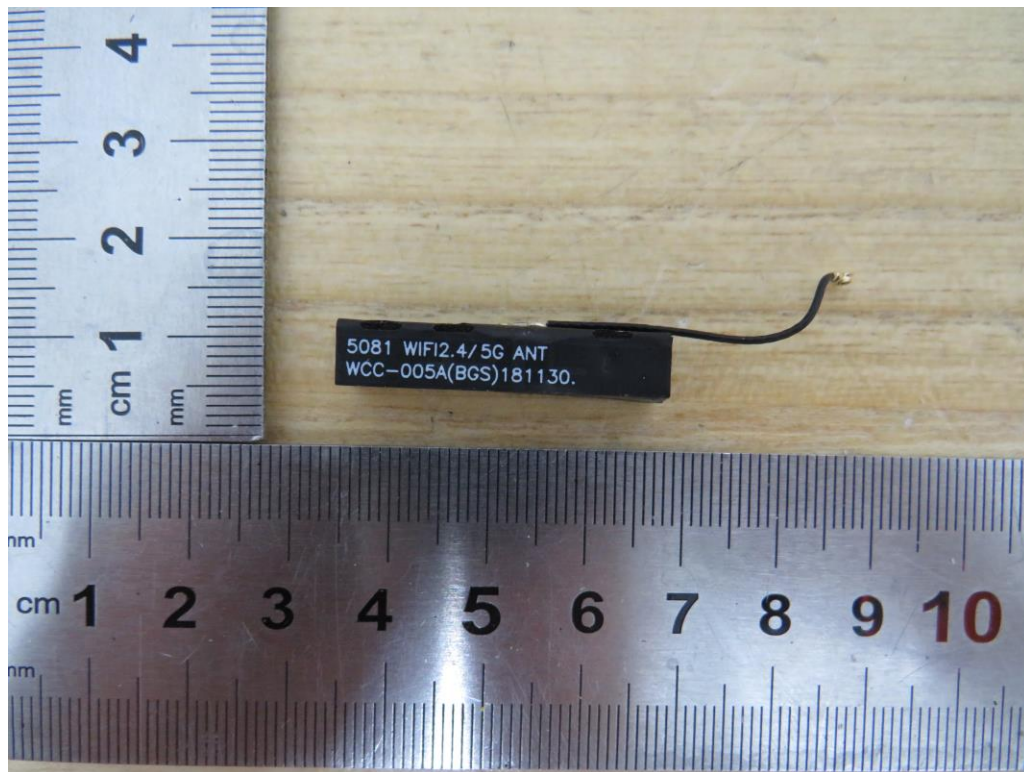


Internal View of EUT-16



A photograph of a green printed circuit board (PCB) with various electronic components. A large white chip in the center is labeled 'Rockchip RK3288'. To its left is a barcode with the text 'M5202207002-00008'. The board has several gold-plated mounting holes and connectors. It is placed on a wooden surface next to a ruler for scale.

Internal View of EUT-19



Internal View of EUT-20

