

Cotton Mass Flow Sensor Low Power (CMFS)

User Information

CMFS Low Power – PH85246071



JOHN DEERE

Recognize Safety Information

This is a safety-alert symbol. When you see this symbol on your machine or in this manual, be alert to the potential for personal injury.

Follow recommended precautions and safe operating practices.



Understand Signal Words

DANGER; The signal word DANGER indicates a hazardous situation which, if not avoided, will result in death or serious injury.

WARNING; The signal word WARNING indicates a hazardous situation which, if not avoided, could result in death or serious injury.

CAUTION; The signal word CAUTION indicates a hazardous situation which, if not avoided, could result in minor or moderate injury. CAUTION may also be used to alert against unsafe practices associated with events which could lead to personal injury.

A signal word—DANGER, WARNING, or CAUTION—is used with the safety-alert symbol. DANGER identifies the most serious hazards. DANGER or WARNING safety signs are located near specific hazards. General precautions are listed on CAUTION safety signs. CAUTION also calls attention to safety messages in this manual.



Follow Safety Instructions

Carefully read all safety messages in this instruction. Read the product operators manual for operating instructions and safety messages. Do not let anyone operate without instruction. (A copy of the operator's manual may also be available from the Service ADVISOR™ application.)



Replace Safety Signs

Replace missing or damaged safety signs. See the machine operator's manual for correct safety sign placement.



Practice Safe Maintenance

Understand service procedure before doing work.
Keep area clean and dry.

Never lubricate, service, or adjust machine while it is moving. Keep hands, feet, and clothing away from power-driven parts. Disengage all power and operate controls to relieve pressure. Lower equipment to the ground. Stop the engine. Remove the key. Allow machine to cool.

Securely support any machine elements that must be raised for service work.

Keep all parts in good condition and properly installed. Fix damage immediately. Replace worn or broken parts. Remove any buildup of grease, oil, or debris.

On self-propelled equipment, disconnect battery ground cable (-) before making adjustments on electrical systems or welding on machine.

On towed implements, disconnect wiring harnesses from tractor before servicing electrical system components or welding on machine.

Falling while cleaning or working at height can cause serious injury. Use a ladder or platform to easily reach each location. Use sturdy and secure footholds and handholds.



Use Steps and Handholds Correctly

Prevent falls by facing the machine when getting on and off. Maintain 3-point contact with steps, handholds, and handrails.

Use extra care when mud, snow, or moisture present slippery conditions. Keep steps clean and free of grease or oil. Never jump when exiting machine. Never mount or dismount a moving machine.



Handle Electronic Components and Brackets Safely

Falling while installing or removing electronic components mounted on equipment can cause serious injury. Use a ladder or platform to easily reach each mounting location. Use sturdy and secure footholds and handholds. Do not install or remove components in wet or icy conditions.

If installing or servicing a RTK base station on a tower or other tall structure, use a certified climber.

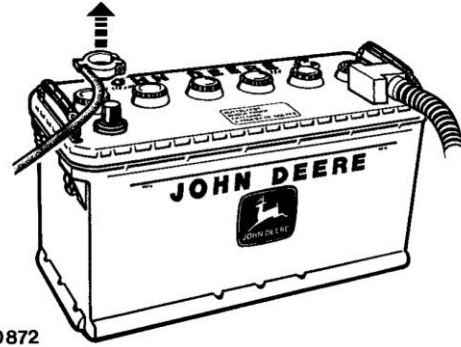
If installing or servicing a global positioning receiver mast used on an implement, use proper lifting techniques and wear proper protective equipment. The mast is heavy and can be awkward to handle. Two people are required when mounting locations are not accessible from the ground or from a service platform.



Electrical System — General Instructions on Safety

⚠ CAUTION: Before working on the electrical system, always disconnect battery ground cable (-).

NOTE: Refer also to the Technical Manual before installing, removing or adjusting components.



Use Technical Manuals

When performing the work described in this instruction, use relevant Technical Manuals for additional service instruction.

Carefully read and comply with safety messages and cautions presented throughout the text.

Both diagnostic and repair technical manuals are concise guides for specific equipment. They are on-the-job instructions containing vital information to diagnose, analyze, test, and repair the equipment.



Use Proper Tools

Use tools appropriate to the work. Makeshift tools and procedures can create safety hazards.

Use power tools only to loosen threaded parts and fasteners.

For loosening and tightening hardware, use the correct size tools. DO NOT use U.S. measurement tools on metric fasteners. Avoid bodily injury caused by slipping wrenches.

Use only service parts meeting John Deere specifications.



Avoid Exposure to High Radio Frequency Fields

Prevent injury from exposure to high radio frequency fields at the Cotton Mass Flow Sensor Low Power antenna. Do not touch the Cotton Mass Flow Sensor Low Power device or its antenna while the system is transmitting. Always disconnect power to the Cotton Mass Flow Sensor Low Power device and antenna before installing or servicing.

The Cotton Mass Flow Sensor Low Power device and antenna should always be separated from the operator or nearby persons by a minimum of 20 cm (8 inches).



Regulatory Information

Federal Communications Commission Notifications to User

Cotton Mass Flow Low Power Sensor

This device complies with part 15 of the FCC Rules. Operation is subject to the following two conditions: (1) This device may not cause harmful interference, and (2) this device must accept any interference received, including interference that may cause undesired operation.

This device must be operated as supplied by John Deere Ag Management Solutions. Any changes or modifications not expressly approved by John Deere Ag Management Solutions for compliance could void the user's authority to operate the equipment.

This equipment has been tested and found to comply with the limits for a Class B digital device, pursuant to Part 15 of the FCC Rules. These limits are designed to provide reasonable protection against harmful interference in a residential installation. This equipment generates uses and can radiate radio frequency energy and, if not installed and used in accordance with the instructions, may cause harmful interference to radio communications. However, there is no guarantee that interference will not occur in a particular installation. If this equipment does cause harmful interference to radio or television reception, which can be determined by turning the equipment off and on, the user is encouraged to try to correct the interference by one of the following measures:

- Reorient or relocate the receiving antenna.
- Increase the separation between the equipment and receiver.
- Connect the equipment into an outlet on a circuit different from that to which the receiver is connected.
- Consult the dealer or an experienced radio/TV technician for help.

Hardware



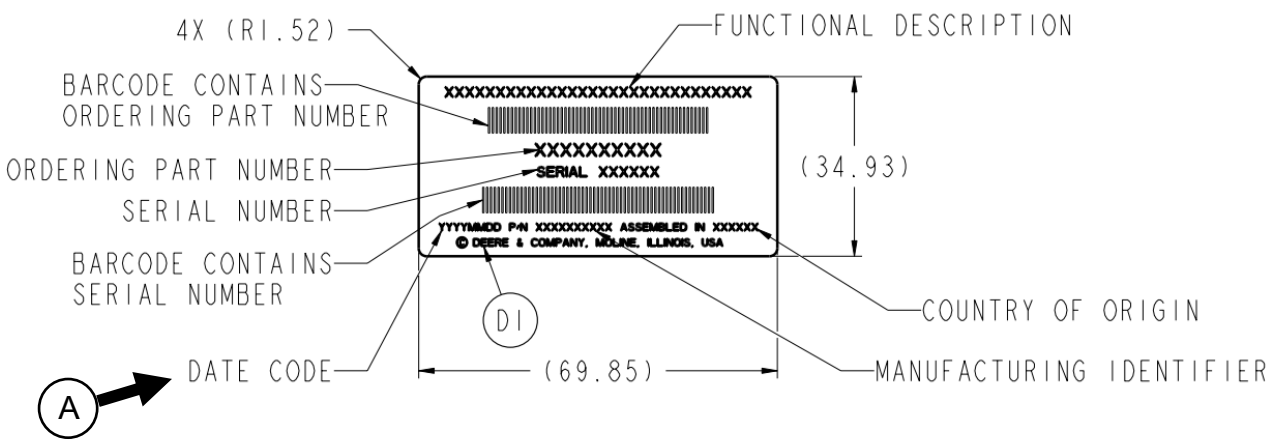
Figure 1 – Cotton Mass Flow Sensor

Product Label

Identify Date Code

Use the Date code (A) on the product label to identify the date of manufacture (DOM)

A – Date Code



Product Label Example

How to Use

1. Secure the CMFS in a Deere designated location. The sensor shall be secured with four 8mm fastener(s) using the provide hole(s) in the case.



Figure 2 - Example of Mounting Point

2. Plug in the power/CAN harness into CMFS. The CMFS uses DELPHI metri-pack 150 series connection. P/N – 12065425 OR 12065426.

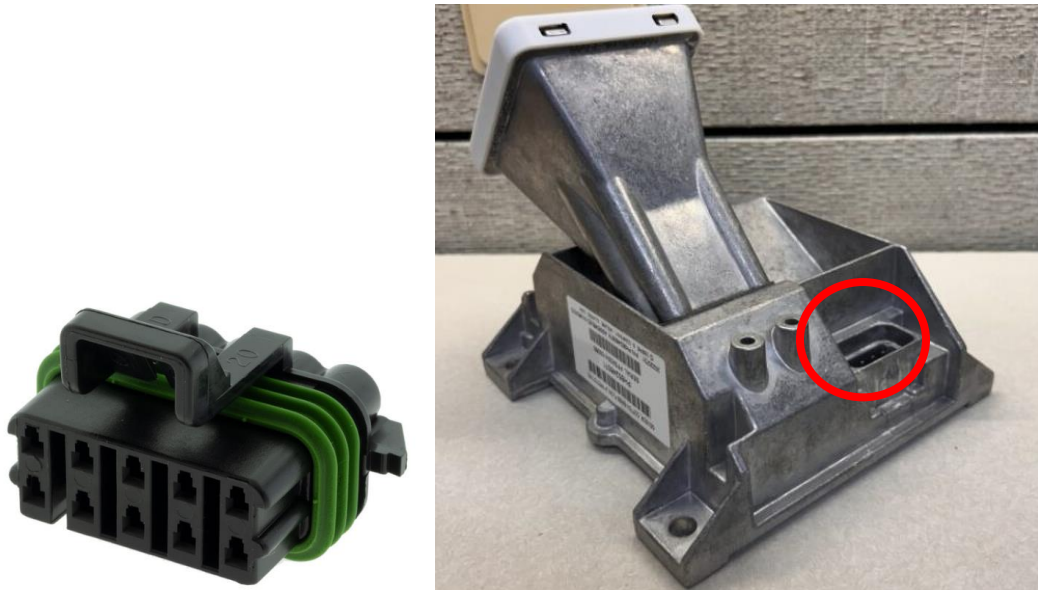


Figure 3 - Example of Harness Connector

3. The end of power/CAN harness shall connect to the vehicle CAN bus and the GSD.
4. Once the CMFS is connected, the Display (Gen 4/Gen 5) can be powered on and reviewed for setup success.