

User manual

Card reader install manual

Version 1.0

Our offices

Website: www.myepsoft.com Email: sales@myepsoft.com

Korea (Headquarters)

EPSoft Co. Ltd

#802, Royal Plaza Bldg, 397-4,

Bupyeong4-dong, Bupyeong-gu,

Incheon, Korea

Tel No: (82) 32-506 9179

Fax No: (82) 32-506 9188

Singapore

EPSoft International Pte. Ltd

Tempco Technominium

16 Ayer Rajah Crescent,

#06-03, Singapore 139965

Tel No: (65) 6272 7794

Fax No: (65) 6272 7894

Content of table

1	Introduction	3
1.1	Overview.....	3
1.2	Key benefits	3
2	Installation	4
3	Contact us.....	6
4	Copyright Statement	7

This device complies with part 15 of the FCC Rules.
Operation is subject to the following two conditions:
(1) This device may not cause harmful interference, and
(2) This device must accept any interference received,
including interference that may cause undesired operation.

Caution: Any changes or modifications to the equipment not expressly approved by the party responsible for compliance could void user's authority to operate the equipment.

1 Introduction

1.1 Overview

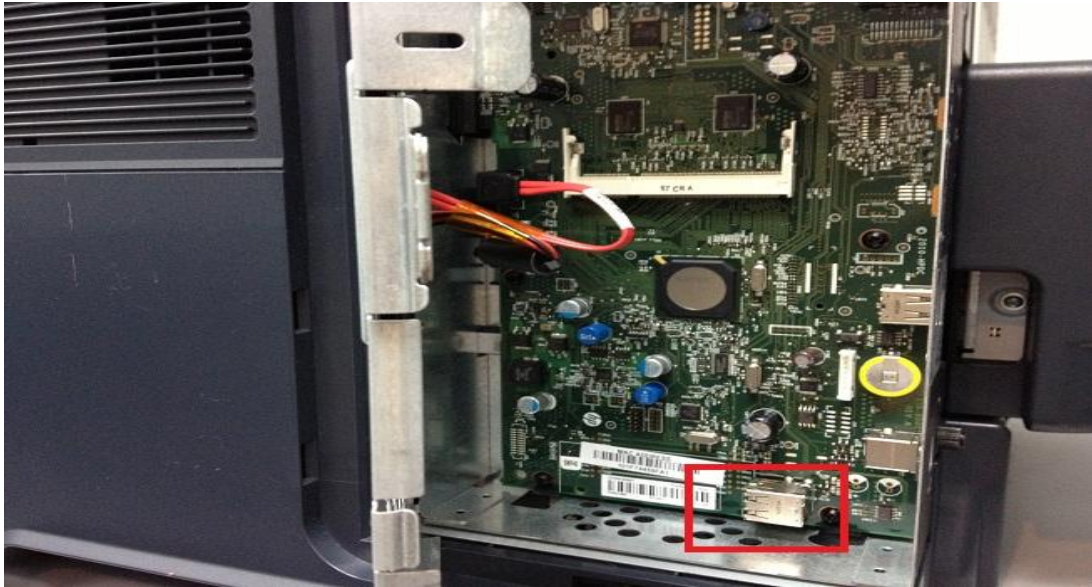
A card reader is a data input device that reads data from a card-shaped storage medium

1.2 Key benefits

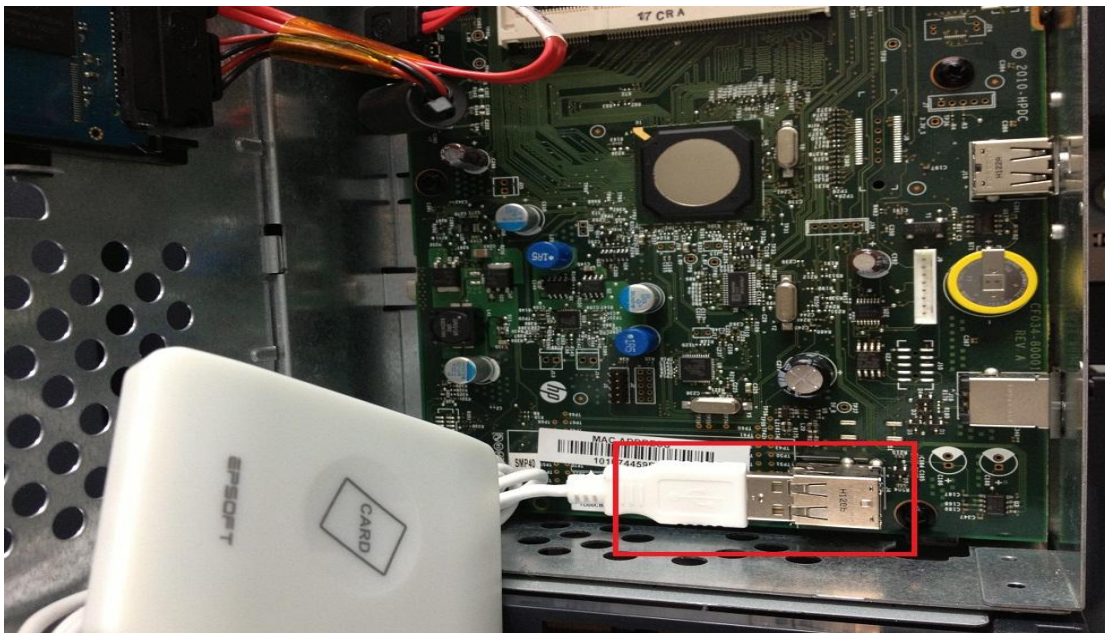
- Easy installation and maintenance
- Easy to use the company Smart card to print

2 Installation

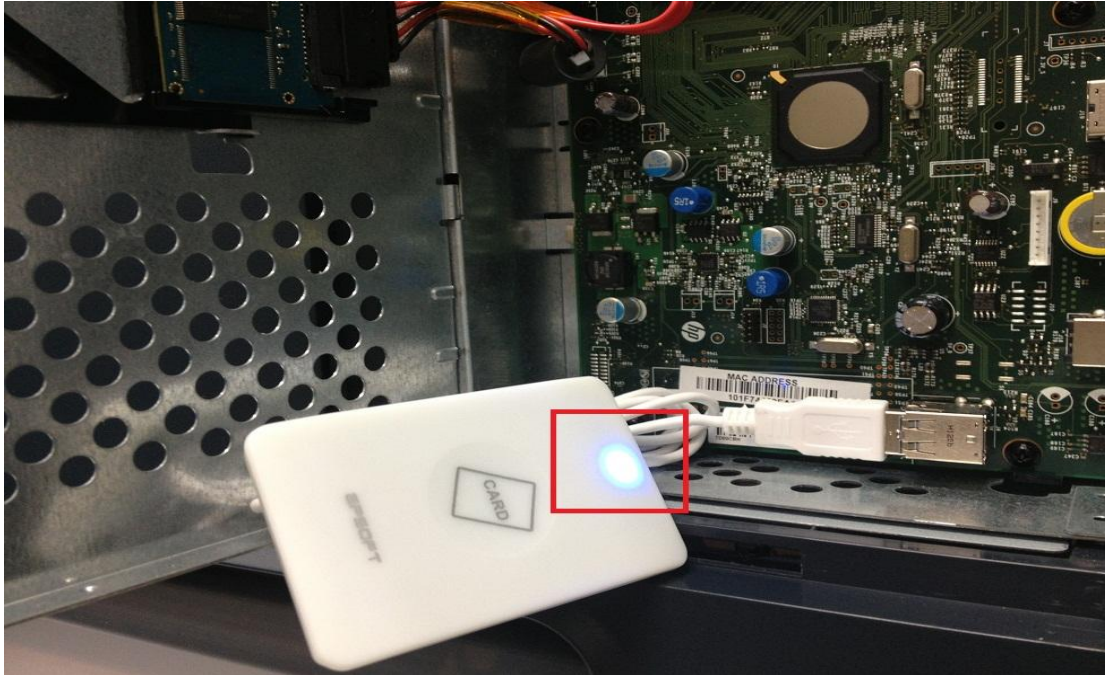
- Turn off the printer
- Take out the side plane, check the USB Slot.



- Insert the Card Reader into the USB Slot.



- Turn on the printer
- Check the light on the card reader, it should be blue



- Check the printer EWS page, under information->Configuration Page-> Other USB Accessories should have the SRT125KU

[Device Status](#)
[Job Log](#)
[Configuration Page](#)
[Supplies Status Page](#)
[Event Log Page](#)
[Usage Page](#)
[Device Information](#)
[Control Panel Snapshot](#)
[Print](#)
[Printable Reports and Pages](#)
Other Links
[HP Instant Support](#)
[Shop for Supplies](#)
[Product Support](#)

Configuration Page

Device Information		Memory		
Product Name:	HP LaserJet 600 M802	Total RAM:		
Device Name:	HP LaserJet 600 M802	512 MB		
Model Number:	CE993V	Event Log		
DC Controller Version:	5.116	Number of Entries in Use:	48	
Device Serial Number:	CN28C8K302	Three Most Recent Entries:		
Formatter Number:	TD00CBH	Number	Cycles	Event
Firmware Datecode:	20111217	48	1455	48.03.1A
Firmware Revision:	2131305_192069	47	1455	98.03.11
Service ID:	21277	46	1450	48.03.1A
PS Wait Time-out:	300 seconds	Security		
Engine Cycles*:	1457	Hard Disk Encryption Status:		
*Not weighted for billing		Internal Disk:		
		Disk cannot be encrypted		
Installed Personalities and Options		File Erase Mode:		
PCL:	20010402	Non-Secure Fast Erase (No overwrite)		
PCLXL:	20010402	Control Panel Password:		
POSTSCRIPT:	20010402	Disabled		
PDF:	20050131	Support Key:		
		WQW2-W27G-Y026		
		Host USB plug and play:		
		Enabled		
		Device USB:		
		Enabled		
Other USB Accessories:		Paper Trays and Options		
SRT125KU		Default Paper Size:		
		A4		
		Tray 1 Size:		
		Any Size		
		Tray 1 Type:		
		Any Type		
		Tray 2 Size:		
		A4		
		Tray 2 Type:		
		Plain		
		1:		
		Output Bin 1, 500 Sheets, Standard bin (correct order)		
		2:		
		Output Bin 2, 100 Sheets, Rear bin (straightest path)		
HP Web Services				
HP Web Services:	Disabled			
ePrint:	Disabled			

3 Contact us

1. Navigate to About tab.
2. Click on support@myepsoft.com link at any of our office address to send email for more product information and any support related inquiries.

Website www.myepsoft.com

Contact E-mail address support@myepsoft.com

4 Copyright Statement

© EPSOft International Pte Ltd, 2012

All rights reserved. No part of this manual may be reproduced, transcribed, stored in a retrieval system, translated into any language or computer language or transmitted in any form or by any means, electronic, mechanical, photocopying, recording or otherwise, without the prior written permission of the copyright owner.

The copyright owner gives no warranties and makes no representations about the contents of this manual and specifically disclaims any implied warranties or merchantability or fitness for any purpose.

The copyright owner reserves the right to revise this manual and to make changes from time to time in its contents without notifying any person of such revisions or changes.